

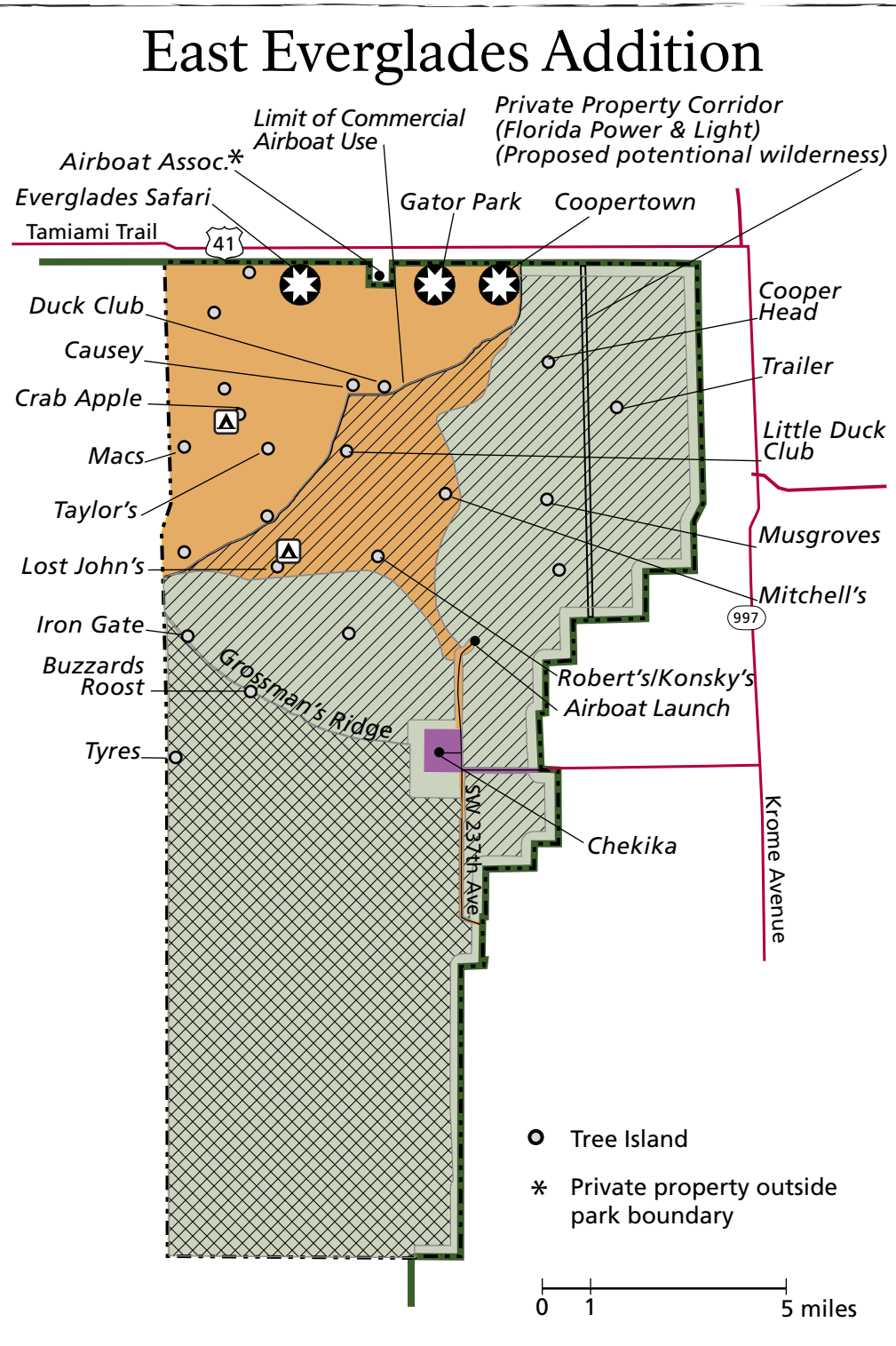
## Legend

### Management Zones

- Developed
- Frontcountry
- Boat Access – colors indicate different water depths (shallower = lighter)
- Pole/Troll
- Pole/Troll/Idle
- Backcountry (nonmotorized)
- Special Protection

### Routes and Designations

- Channel/Access Route
- On Plane Access
- Slow Speed Corridor
- Idle Speed Zone
- Wilderness Waterway
- Everglades Paddling Trail (colors indicate different management)
- Seasonal Idle Speed (Nov 15–Apr 30)
- Seasonal Backcountry (Nov 15–Apr 30)
- Seasonal Slow Speed Corridor (Nov 15–Apr 30)
- Idle Speed–No Wake
- Paddling Trail
- Hiking Trail
- Park Roads
- Proposed Wilderness (East Everglades)
- Proposed Potential Wilderness (East Everglades)
- Existing Campground or Campsite
- Proposed Campground or Campsite
- Existing Visitor Facility
- Proposed or Expanded Visitor Facility
- Commercial Airboat Operations



### Florida Bay Management

- Protect areas at risk of scarring with pole/troll and pole/troll/idle zones based on science and expert on-the-water knowledge of where boats can be operated with reduced likelihood of damaging seagrass beds and other shallow water habitats (See Florida Bay Management Zones detail map)
- Marking of pole/troll/idle zones would be minimal, with reliance instead on navigation skills, GPS, and marine charts
- Boat channels/access routes that exist now would remain
- Mandatory education/permit program for boaters and increased enforcement presence

## NPS Preferred Alternative General Management Plan/East Everglades Wilderness Study Everglades National Park



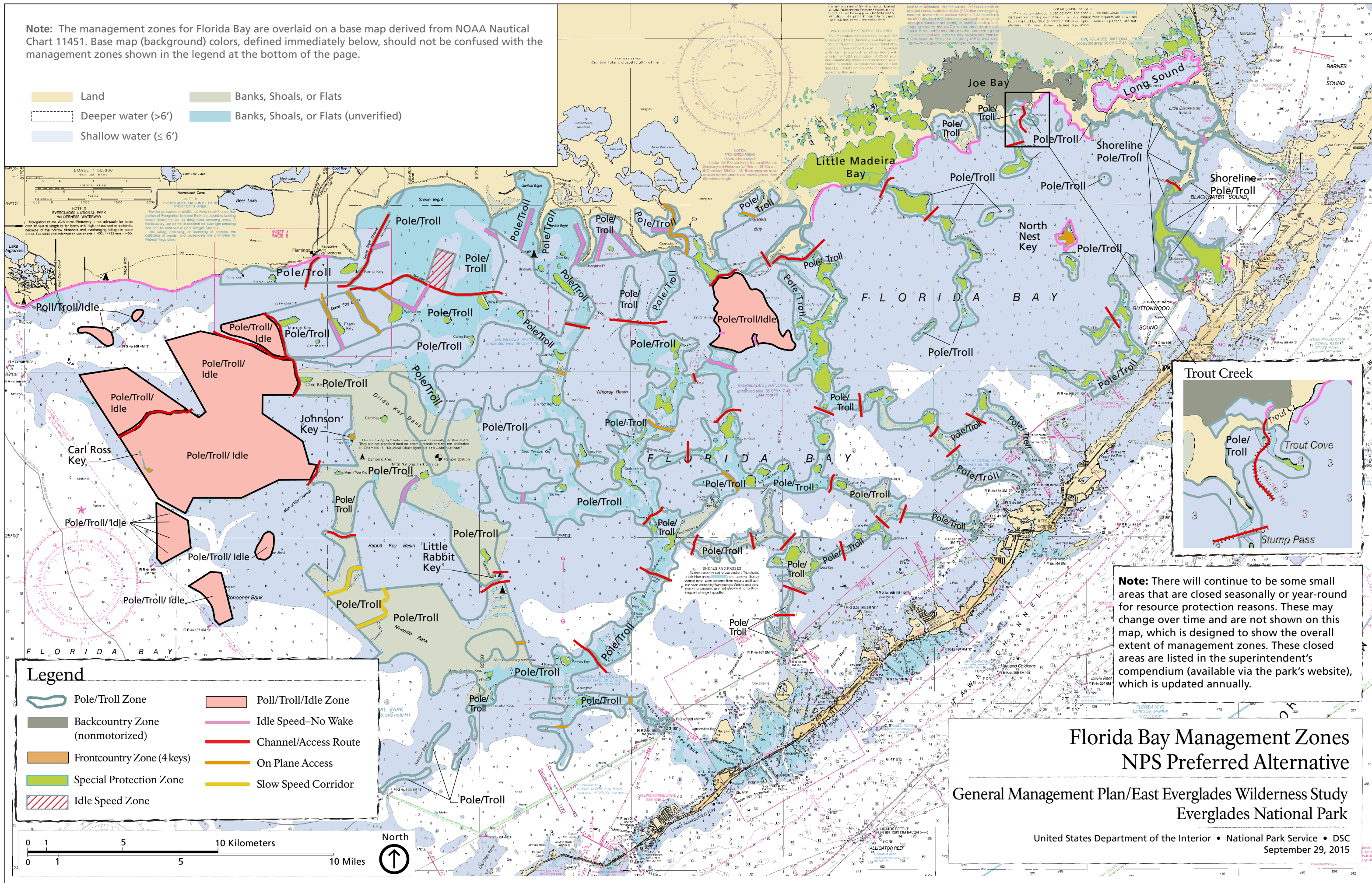
**Note:** The management zones for Florida Bay are overlaid on a base map derived from NOAA Nautical Chart 11451. Base map (background) colors, defined immediately below, should not be confused with the management zones shown in the legend at the bottom of the page.

- Land

Deeper water (>6')

Shallow water (≤ 6')
- Banks, Shoals, or Flats

Banks, Shoals, or Flats (unverified)



**Note:** There will continue to be some small areas that are closed seasonally or year-round for resource protection reasons. These may change over time and are not shown on this map, which is designed to show the overall extent of management zones. These closed areas are listed in the superintendent's compendium (available via the park's website), which is updated annually.

# Florida Bay Management Zones NPS Preferred Alternative

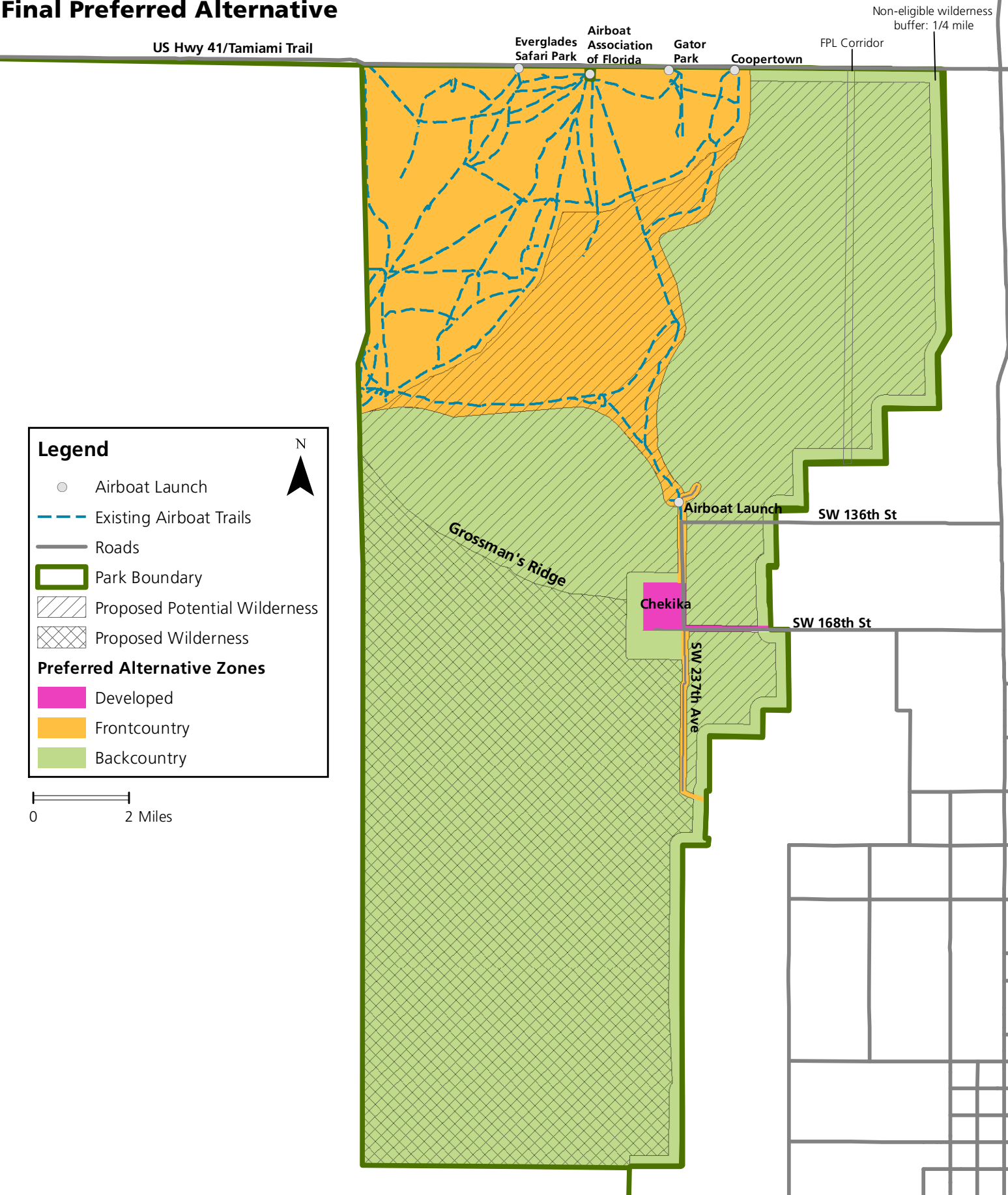
General Management Plan/East Everglades Wilderness Study  
Everglades National Park

United States Department of the Interior • National Park Service • DSC  
September 29, 2015





East Everglades Zoning and Wilderness Proposal:  
Final Preferred Alternative



**Legend**

- Airboat Launch
- Existing Airboat Trails
- Roads
- Park Boundary
- Proposed Potential Wilderness
- Proposed Wilderness

**Preferred Alternative Zones**

- Developed
- Frontcountry
- Backcountry

