



Purpose and Need for the Property Management Plan

The purpose of this plan is to decide how the National Park Service can best fulfill Missouri National Recreational River's (MNRR) mission to protect its resources unimpaired for the enjoyment of present and future generations at the three properties. The management plan identifies actions for recreational site development, resource management, interpretation/education and establishes management policies on certain issues, such as access, hunting, and camping.

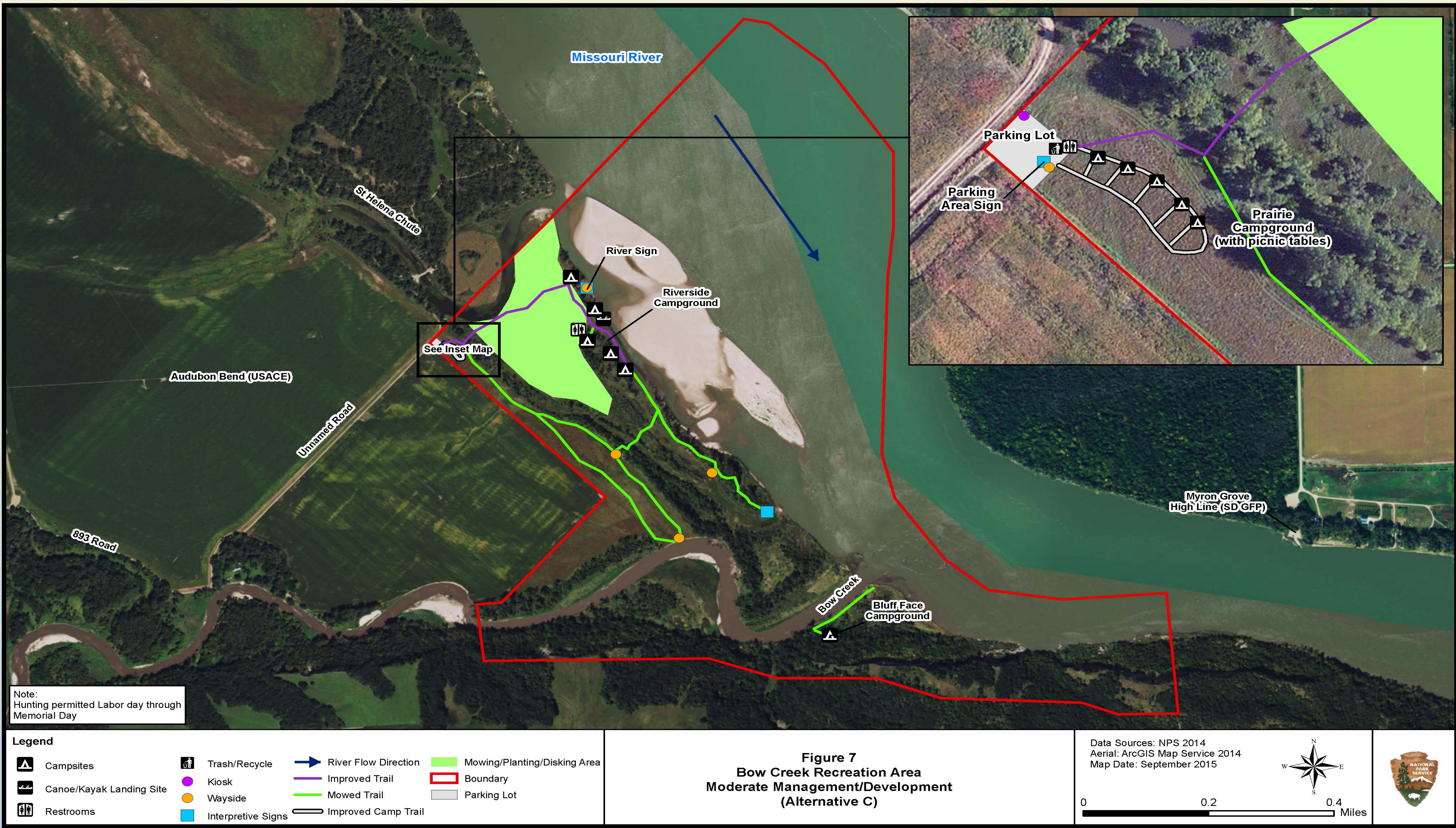
A management plan is needed because the three properties were acquired after the MNRR's General Management Plan was completed in 1999. In addition, a management plan for the three properties is necessary for the park to carry out its purpose and to fulfill the intent of the congressional mandates found in the Wild and Scenic Rivers Act – the enabling legislation of the MNRR. The Wild and Scenic Rivers Act identifies Administration Policy for designated rivers to protect and enhance the values for which it became a component of the national wild and scenic river system. It also identifies that "[m]anagement plans for any such component may establish varying degrees of intensity for its protection and development based on the special attributes of the area."

Project Schedule

- Public Scoping
December 2014
- Develop Alternatives
Winter 2015
- Prepare Environmental Assessment
Spring 2015 - Summer 2015
- ***Public Comment on Environmental Assessment
October 2015 (We Are Here)***
- Decision Document
Winter 2015/2016
- Implementation
Spring 2016



Bow Creek Recreation Area



Preferred Alternative C

- **Resource Management** - disk and plant native species and cottonwood seedlings; and protect cultural resources as needed
- **Site Development** - install kiosk, three waysides, property sign, and small resource/directional signs; construct three trails; establish three primitive campgrounds; provide metal fire rings and picnic tables; install vault /portable toilets and trash/recycling receptacles
- **Visitor Activities** - camping either year round or Memorial Day through Labor Day (campground dependent); hunting Labor Day through Memorial Day; canoe/kayak with designated landing sites; on-leash dog walking; bike riding on park roads and parking area



Alternative A: No Action

Current management and visitor opportunities would continue

- **Resource Management** - exotic species control; prescribed burns for grassland management; cultural resource management
- **Visitor Activities** - primitive, non-regulated camping; hunting; on-leash dog walking; bike riding on park roads and parking areas; canoeing/kayaking with no designated landing areas

Alternative B: Low Management/Development

- **Resource Management** - plant locally native species; protect cultural resources as needed
- **Site Development** - installation of a kiosk and recycling receptacle in the parking lot; construct a mowed loop trail
- **Visitor Activities** - primitive, non-designated camping from Memorial Day through Labor Day; hunting from Labor Day to Memorial Day; on-leash dog walking; bike riding on park roads and parking areas; canoeing/kayaking with no designated landing areas

Alternative D: High Management/Development

- **Resource Management** - disk and plant native species and cottonwood seedlings; restore backwater; protect cultural resources as needed
- **Site Development** - install kiosk, five waysides, property sign, interpretive sign at Bluffs Area, and small campsite/resource signs; construct four trails; establish three campgrounds (some electric); provide metal fire rings and picnic tables; install comfort station, vault /portable toilets, water well, and trash/recycling receptacles; construct gravel road to river
- **Visitor Activities** - camping either year round or Memorial Day through Labor Day (campground dependent); hunting Labor Day through Memorial Day; canoe/kayak with designated landing sites; on-leash dog walking; bike riding on park roads and parking area

Mulberry Bend



Preferred Alternative C

- **Additional Resource Management** - remove hazard trees; maintain vegetation; additional mowing; moderate level of vista maintenance at all vistas
- **Site Development** - maintain current signs; replace two signs; install three waysides and small resource signs; maintain trails; install staircases, bench, and observation point; construct an amphitheater; and install picnic shelter, vault toilet, and trash/recycling receptacles
- **Visitor Activities** - hiking on established trail system; dog walking; bike riding on park roads and parking lot

Alternative A: No Action

- Current management and visitor opportunities would continue
- **Resource Management** - weekly mowing; exotic species control; prescribed burns for oak savannah and prairie restoration; minimal vista maintenance; monitor archeological sites
 - **Visitor Activities** - hiking on established trail system; dog walking; bike riding on park roads and parking lot

Alternative B: Low Management/Development

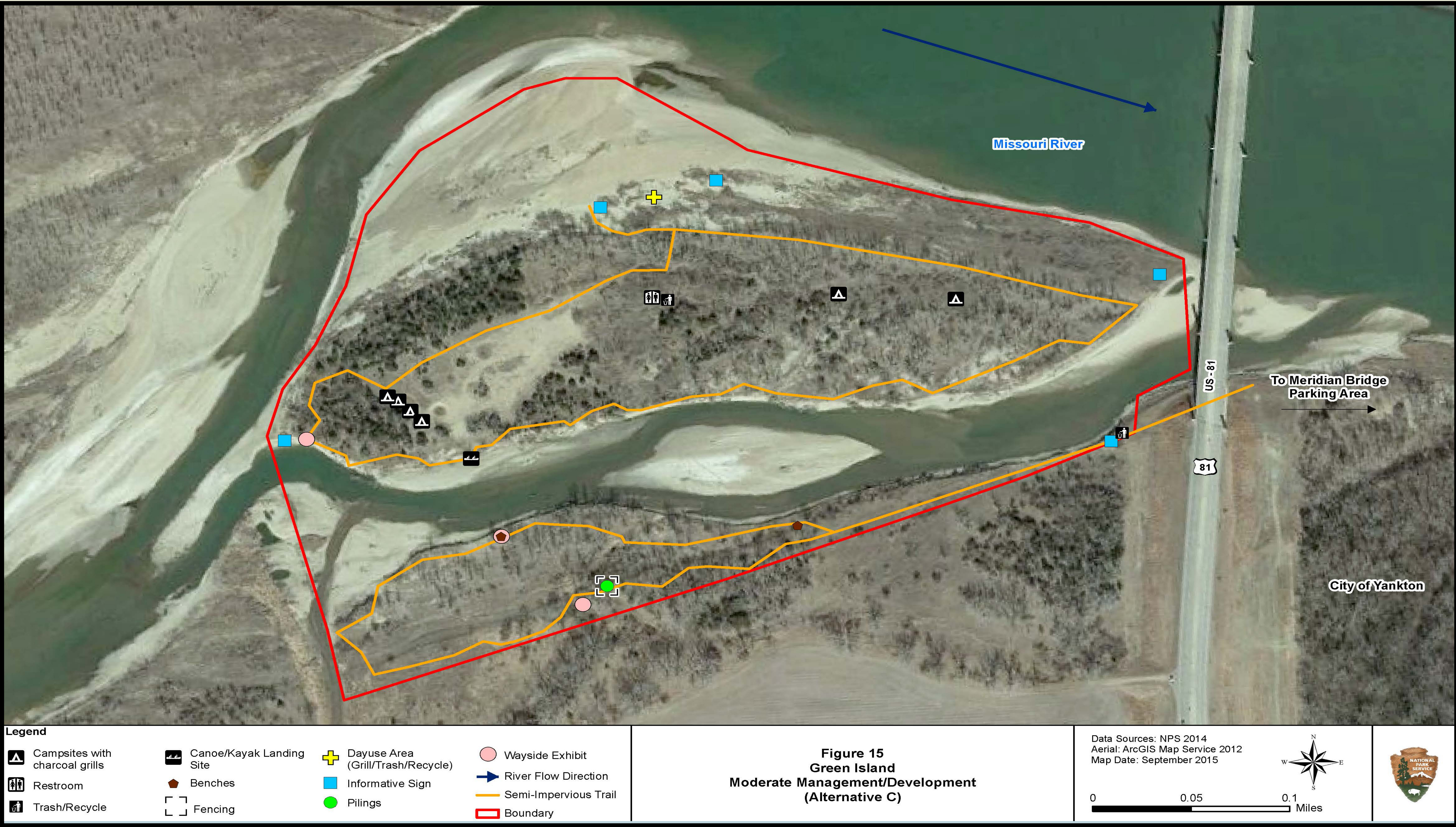
- **Additional Resource Management** - remove hazard trees; maintain vegetation; additional mowing.
- **Site Development** - maintain current signs and install small resource signs
- **Visitor Activities** - hiking on established trail system; dog walking; bike riding on park roads and parking lot

Alternative D: High Management/Development

- **Additional Resource Management** - remove hazard trees; maintain vegetation; additional mowing; maximum level of vista maintenance at all vistas
- **Site Development** - maintain current signs; replace two signs; install five waysides, small resource signs, and interpretive signs; maintain trails; install staircases, bench, and observation platforms; construct an amphitheater; install picnic shelter, vault toilet, and trash/recycling receptacles; develop west side of site with access road, parking area, vault toilets, picnic area, trash/recycling receptacles, and trail; install water pumps on east and west side of site
- **Visitor Activities** - hiking on established and new trail system; dog walking; bike riding on park roads and parking lot



Green Island



Preferred Alternative C

- **Additional Resource Management** - install fencing around historic pilings
- **Site Development** - replace one sign; install four interpretive signs and small campsite/resource signs; establish two trails; establish 5-15 campsites; install charcoal grills, portable toilets, and trash/recycle receptacles
- **Visitor Activities** - hiking on established trail system; primitive camping in designated areas; dog walking; canoeing/kayaking with designated landing sites



Alternative A: No Action

Current management and visitor opportunities would continue

- **Resource Management** - exotic species control; cultural resource management
- **Visitor Activities** - primitive, non-regulated camping; dog walking; canoeing/kayaking with no designated landing sites

Alternative B: Low Management/Development

- **Additional Resource Management** - no additional resource management
- **Site Development** - replace one sign; install one interpretive sign; establish two primitive trails
- **Visitor Activities** - hiking on established trail system; primitive camping in non-designated areas; dog walking; canoeing/kayaking with no designated landing sites

Alternative D: High Management/Development

- **Additional Resource Management** - install fencing around historic pilings; restore backwater
- **Site Development** - replace one sign; install four interpretive signs and small campsite/resource signs; establish two trails; establish 5-20 campsites; install charcoal grills, metal fire rings, two vault toilets, and trash/recycle receptacles; construct a land bridge
- **Visitor Activities** - hiking on established trail system; primitive camping in designated areas; dog walking; canoeing/kayaking with designated landing sites

