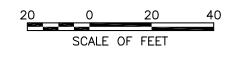


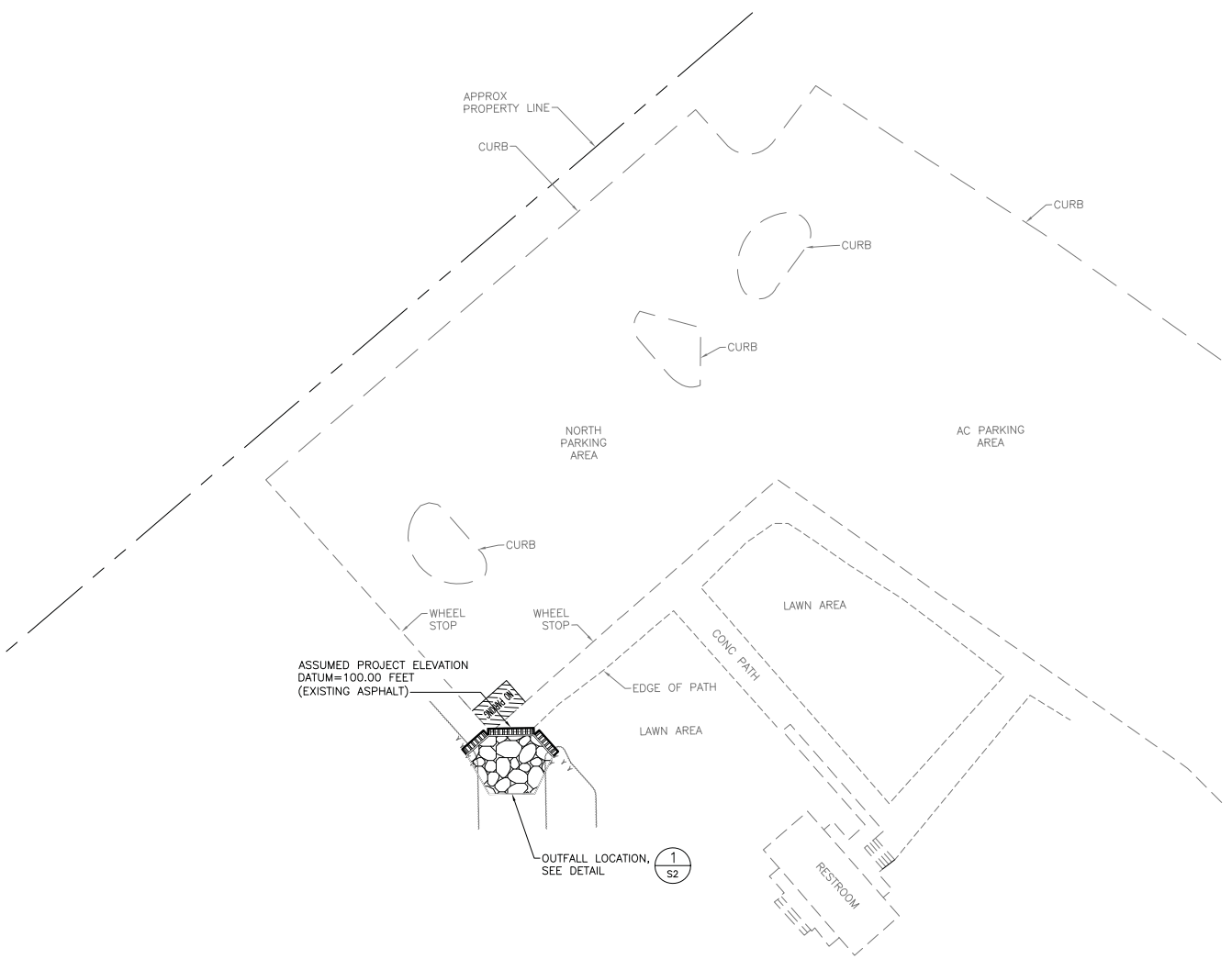
8/3/15 10:20 B006 R19 G:\CLIENTS\NPS\CAD\217962\DRAWINGS\CON\STEP\PLN.DWG - REF: G:\CLIENTS\NPS\CAD\217962\DRAWINGS\BASES\VC_DSGNDWG - G:\CLIENTS\NPS\CAD\217962\DRAWINGS\BASES\VC_BASE.DWG - LENSISTAMP\DAVID BARTON BROOKE - CADWG



NOTE: THE PARK HAS ENVIRONMENTAL REQUIREMENTS FOR MATERIALS IMPORTED INTO THE SITE WHICH ARE IN ADDITION TO CAL-TRANS SPECIFICATIONS. THE PARK HAS PRE-APPROVED FOLLOWING SOURCES FOR THE MATERIALS LISTED:

MARK WEST: SANTA ROSA- ALL MATERIALS
 STONEY POINT: COTATI- ALL MATERIALS
 DUTRA: SAN RAFAEL-RIPRAP, YES
 -AGGREGATE BASE, NO

ALL OTHER SOURCES REQUIRE TESTING



SITE PLAN

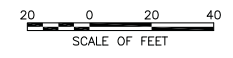


David Barton Brooke
8/03/15

Base Bid

DESIGNED: D.B. BROOKE	SUB SHEET NO. S1	TITLE OF SHEET SITE PLAN	DRAWING NO.
CADD: B. GREENAN		STINSON BEACH PARKING LOT STORM DAMAGE REPAIRS-OUTFALL LOCATION	PMIS/PKG. NO. 217962
TECH. REVIEW: D. ARGO		STINSON BEACH GOLDEN GATE NATIONAL RECREATION AREA	SHEET 1 OF 2
DATE: 7/2015			

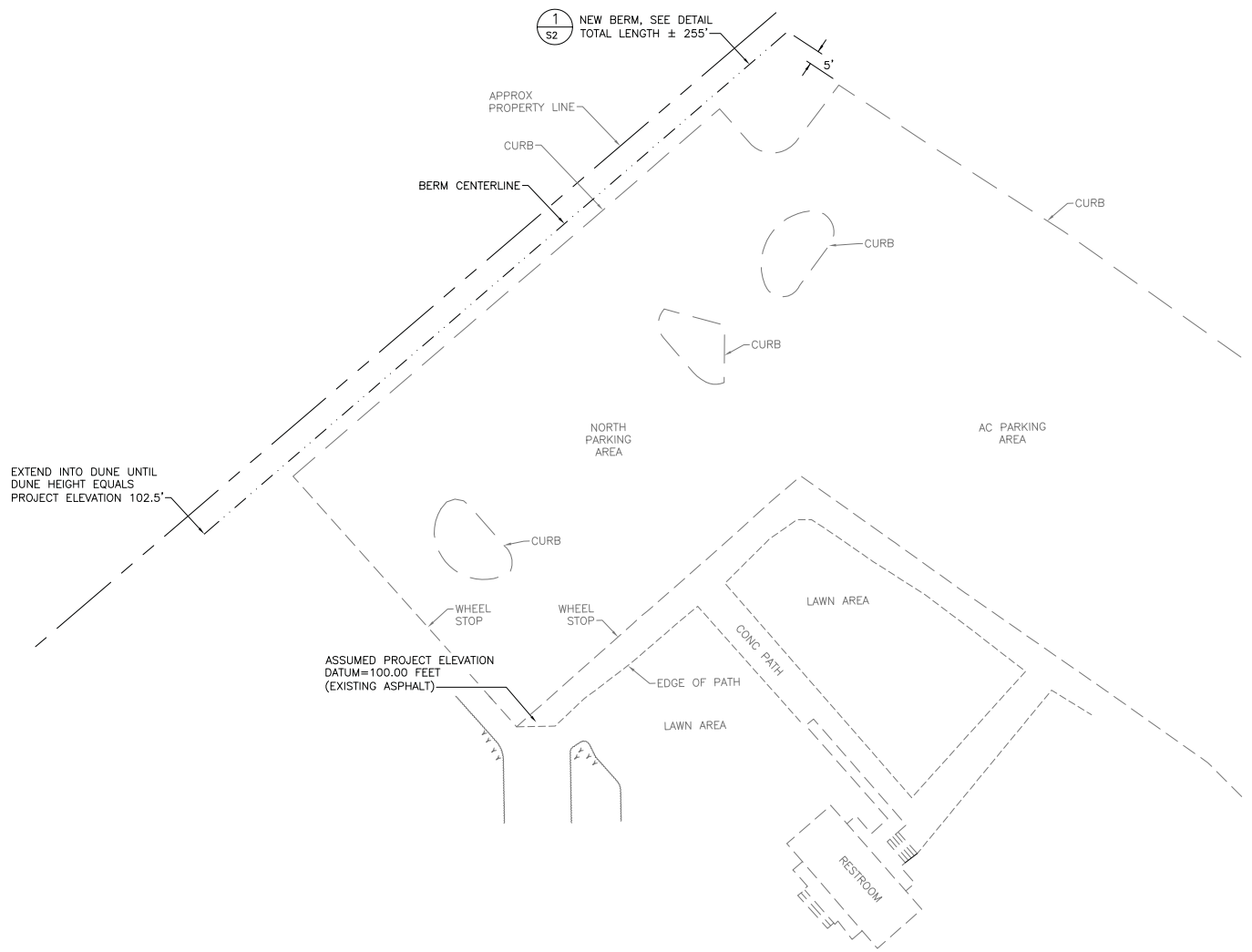
8/2/15 10:20 B006 R19 G:\CLIENTS\NPS\CAD\217962\DRAWINGS\CON\STEP\PLAN.DWG - REF: G:\CLIENTS\NPS\CAD\217962\DRAWINGS\BASES\VC_DSD\DWG - G:\CLIENTS\NPS\CAD\217962\DRAWINGS\BASES\VC_BASE.DWG - LENSING\MP\DAVID BARTON BROOKE - CLDING



NOTE: THE PARK HAS ENVIRONMENTAL REQUIREMENTS FOR MATERIALS IMPORTED INTO THE SITE WHICH ARE IN ADDITION TO CAL-TRANS SPECIFICATIONS. THE PARK HAS PRE-APPROVED FOLLOWING SOURCES FOR THE MATERIALS LISTED:

MARK WEST: SANTA ROSA- ALL MATERIALS
 STONEY POINT: COTATI- ALL MATERIALS
 DUTRA: SAN RAFAEL-RIPRAP, YES
 -AGGREGATE BASE, NO

ALL OTHER SOURCES REQUIRE TESTING



SITE PLAN



David Barton Brooke
8/03/15

Bid Option

DESIGNED: D.B. BROOKE	SUB SHEET NO. S1	TITLE OF SHEET SITE PLAN	DRAWING NO.
CADD: B. GREENAN		STINSON BEACH PARKING LOT STORM DAMAGE REPAIRS-BERM LOCATION	PMIS/PKG. NO. 217962
TECH. REVIEW: D. ARGO		STINSON BEACH GOLDEN GATE NATIONAL RECREATION AREA	SHEET 1 OF 2
DATE: 7/2015			

