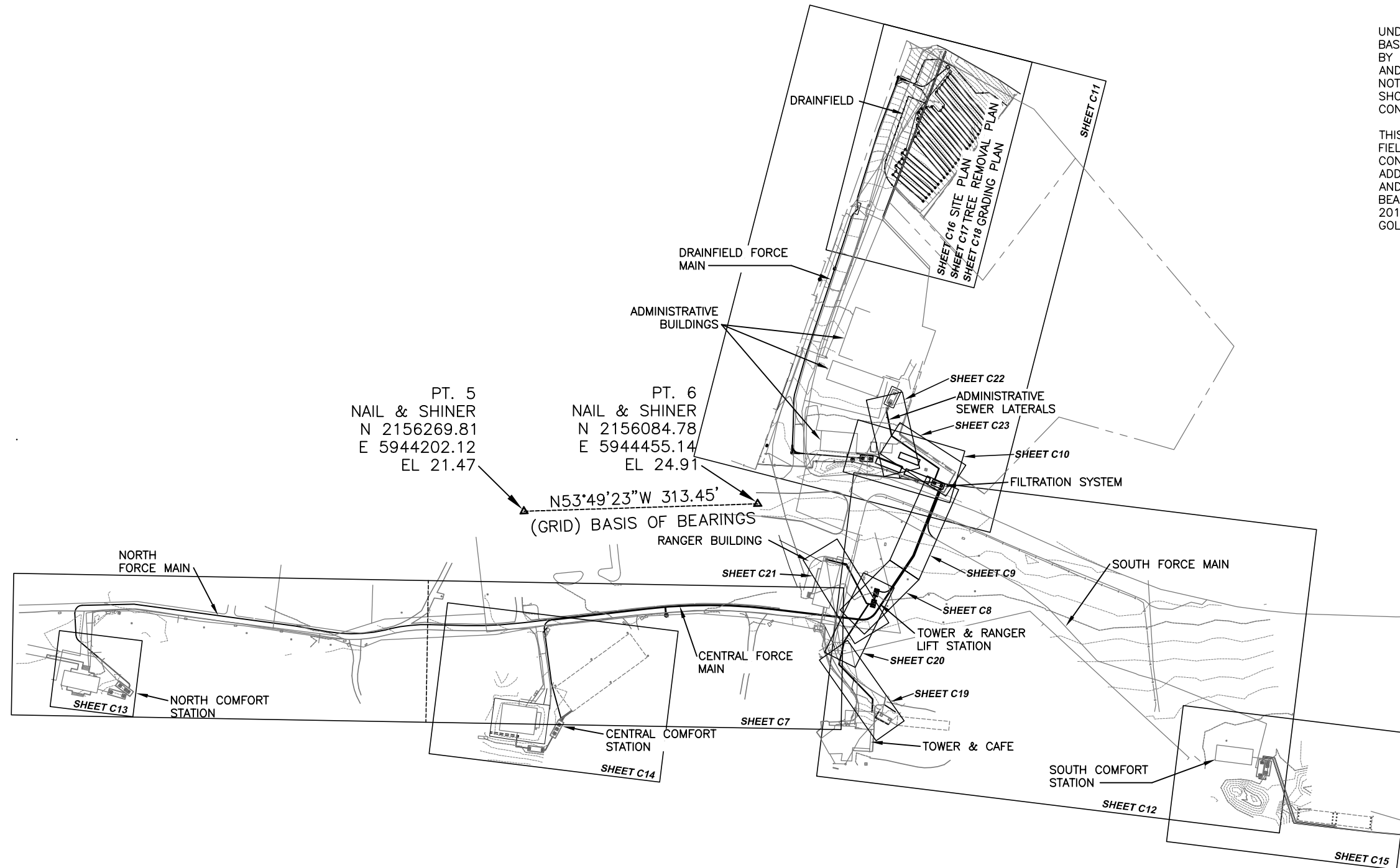


1/27/15 09:53 B08G R19 G:\CLIENTS\NPS\GCA\164335\13-0326B\DRAWINGS\CIVIL\13-0326B\_SET-SITEPLAN.DWG XREFS: G:\CLIENTS\NPS\GCA\164335\13-0326B\DRAWINGS\BASES\13-0326B\_DSON.DWG G:\CLIENTS\NPS\GCA\164335\13-0326B\DRAWINGS\SURV\13-0326B\_TOPO.DWG



UNDERGROUND UTILITY LOCATIONS SHOWN ARE BASED UPON PAINTED UTILITY MARKS PROVIDED BY SAFE2CORE ON JUNE 16TH AND 17TH, 2014 AND HISTORICAL PLANS PROVIDED BY THE NPS AS NOTED. ALL UNDERGROUND UTILITY LOCATIONS SHOULD BE FIELD VERIFIED PRIOR TO CONSTRUCTION.

THIS DRAWING ONLY REFLECTS AND VERIFIES THE FIELD SURVEY DATA OF THOSE FEATURES AND CONDITIONS PRESENT AS OF JUNE 19, 2014. IN ADDITION TO THE SURVEY SERVICES PROVIDED AND THE TOPOGRAPHIC SURVEY OF STINSON BEACH COMPLETED BY BKF, DATED SEPTEMBER 4, 2013, PROVIDED TO WHPACIFIC, INC. BY THE GOLDEN GATE NATIONAL RECREATION AREA.

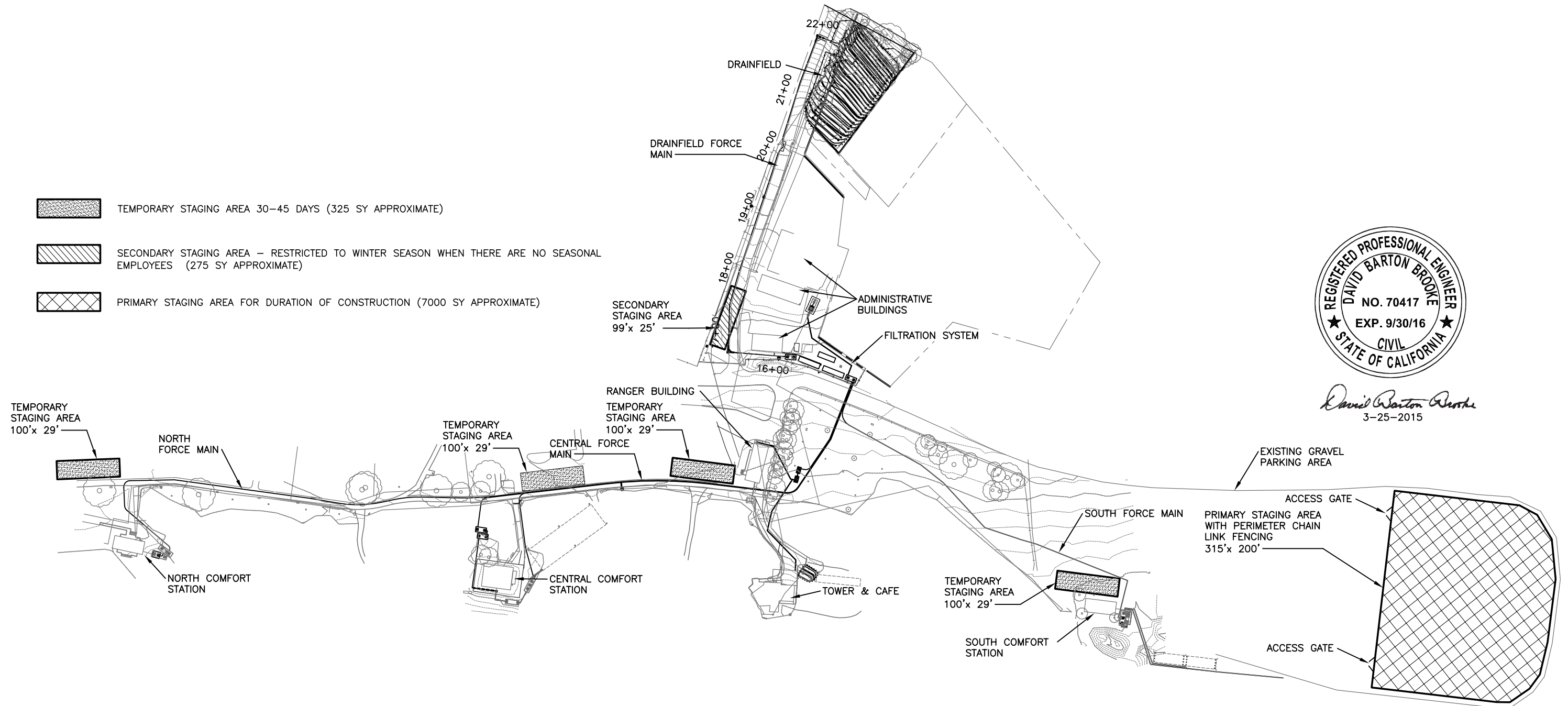


David Barton Brooke  
3-25-2015

NOT TO SCALE

DESIGNED: D.B. BROOKE B. GREENAN TECH. REVIEW: J. BLOM DATE: 3/2015	SUB SHEET NO.  <b>C5</b>	TITLE OF SHEET <b>SITE PLAN-SHEET INDEX REHABILITATE STINSON BEACH WASTEWATER SYSTEM DESIGN</b> STINSON BEACH GOLDEN GATE NATIONAL RECREATION AREA	DRAWING NO. <b>641</b> <b>122332A</b> PMIS/PKG NO. 164335 SHEET <b>9</b> OF <b>66</b>
---	--------------------------------	---	---

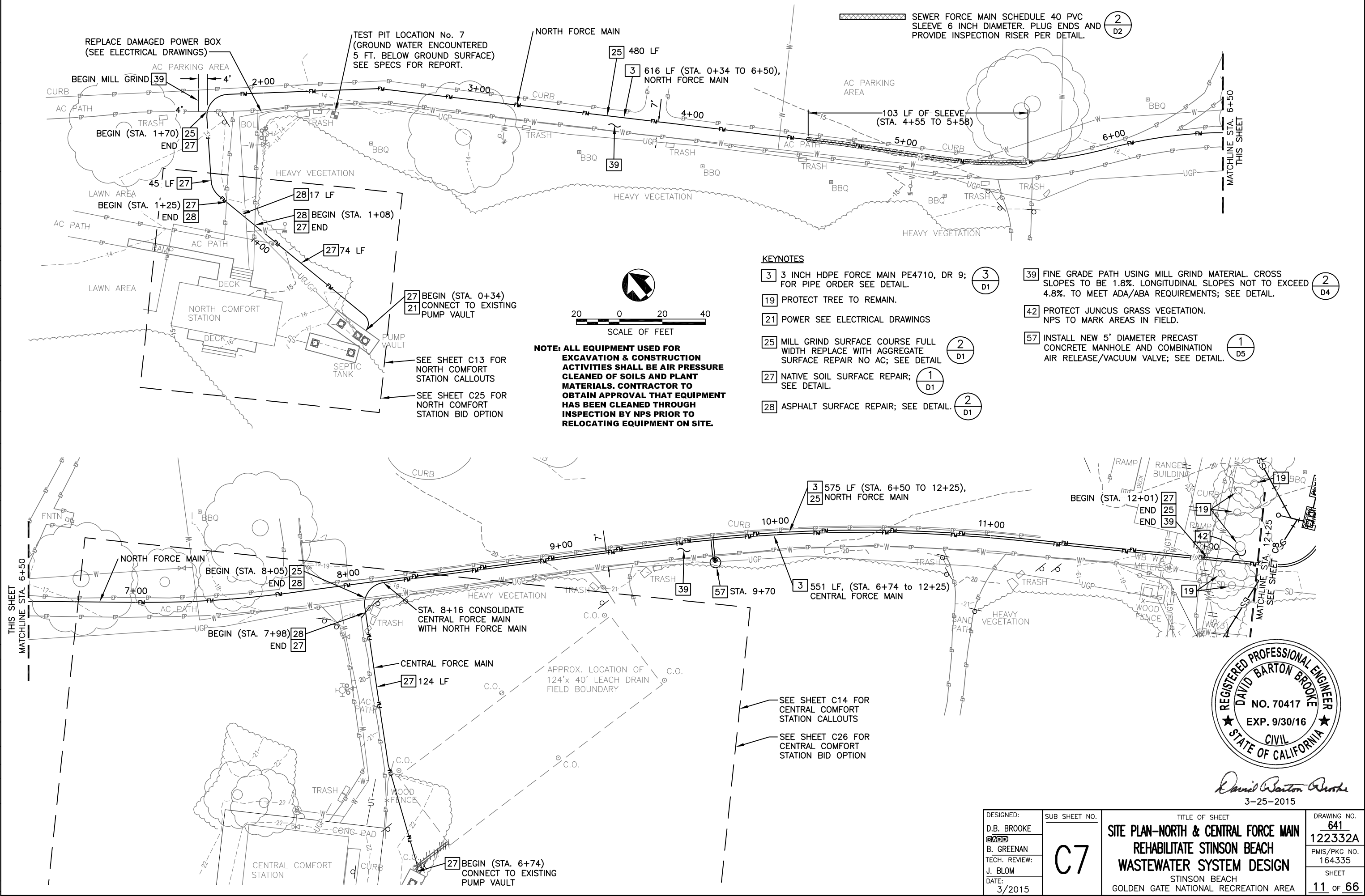
1/27/15 09:53 B06G R19 G:\CLIENTS\NPS\G00A\164335\13-0326B\DRAWINGS\CIV\13-0326B.SET-SITEPLAN.DWG XREFS: G:\CLIENTS\NPS\G00A\164335\13-0326B\DRAWINGS\BASES\13-0326B.DSN.DWG G:\CLIENTS\NPS\G00A\164335\13-0326B\DRAWINGS\SURV\13-0326B.TPO.DWG



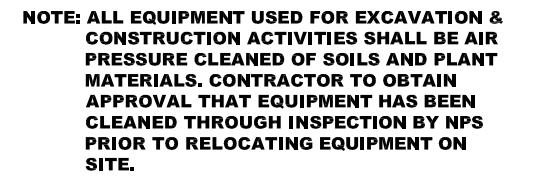
*David Barton Brooke*  
3-25-2015

NOT TO SCALE

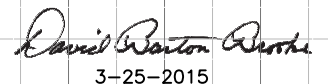
DESIGNED: D.B. BROOKE B. GREENAN TECH. REVIEW: J. BLOM DATE: 3/2015	SUB SHEET NO.  C6	TITLE OF SHEET SITE PLAN-CONSTRUCTION STAGING AREAS REHABILITATE STINSON BEACH WASTEWATER SYSTEM DESIGN STINSON BEACH GOLDEN GATE NATIONAL RECREATION AREA	DRAWING NO. 641 122332A PMIS/PKG NO. 164335 SHEET 10 of 66
---	-------------------------	---	--







42 PROTECT JUNCUS GRASS VEGETATION.  
NPS TO MARK AREAS IN FIELD.



DRAWING NO.  
**641**  
**122332A**

PMIS/PKG NO.  
**164335**

SHEET  
**12** OF **66**



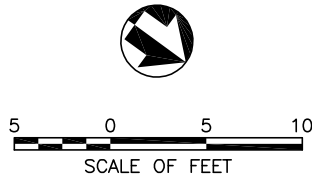
1/27/15 09:53 BORG R19 G:\CLIENTS\NPS\GOCAL\164335\13-0326B\DRAWINGS\CIVIL\13-0326B-SET-SITEPLAN.DWG XREFS: G:\CLIENTS\NPS\GOCAL\164335\13-0326B\DRAWINGS\BASES\13-0326B.DWG G:\CLIENTS\NPS\GOCAL\164335\13-0326B\DRAWINGS\SURV\13-0326B.TPO.DWG

KEYNOTES

- [3A] 3 INCH HDPE FORCE MAIN PE4710, DR 9 2  
D1
- [5] INSTALL 6 INCH SDR 35 PVC SEWER LATERAL.
- [10] INSTALL 5,000 GALLON EQUALIZATION TANK. 20,000 GALLON FILTRATION SYSTEM AND 5,000 GALLON DISTRIBUTION TANK TO DRAINFIELD. USE SPOILS FROM EXCAVATION AS FILL TO PROVIDE FINISH GRADE AROUND FILTRATION SYSTEM WITH 2% MINIMUM POSITIVE SITE DRAINAGE TOWARD THE SOUTHWEST. REMAINING SPOILS TO BE USED IN THE SOUTH PARKING LOT FOR FINISH GRADING IMPROVEMENT AND/ OR THE CONSTRUCTION OF BERMS.
- [12] ABANDON EXISTING 3 INCH PVC & 4 INCH DIP IN PLACE. REMOVE PORTION OF PIPE IN CONFLICT WITH IMPROVEMENTS.
- [18] 1½" DIAMETER CONDUIT FOR FUTURE VALVE CONTROLS. SEE ELECTRICAL DRAWING AND TRENCH DETAIL. 3  
D1
- [21] POWER SEE ELECTRICAL DRAWINGS

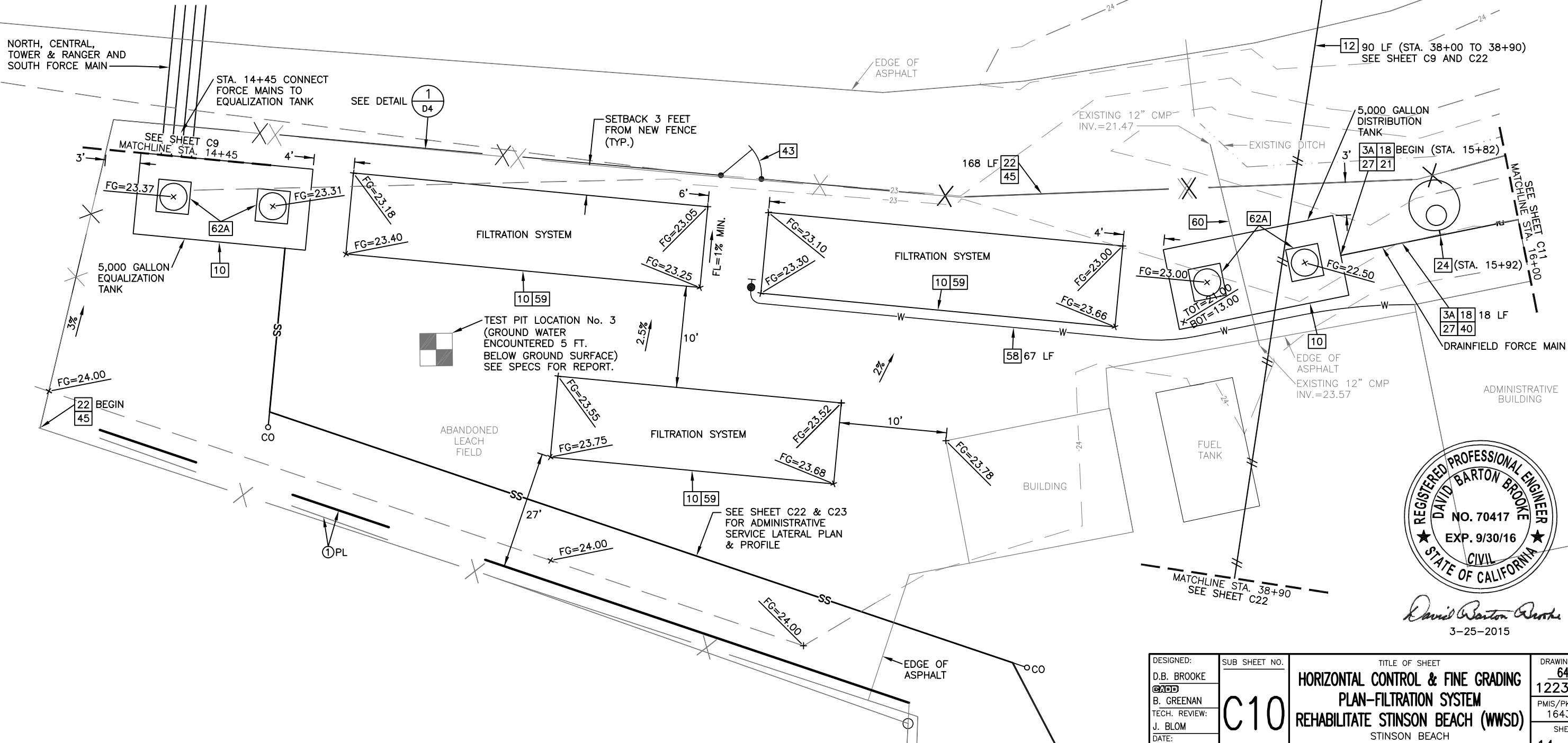
- [22] REMOVE AND HAUL OFF EXISTING WOOD FENCE.
- [24] INSTALL NEW 5' DIAMETER PRECAST CONCRETE MANHOLE AND VALVE. FOR (FUTURE) CONNECTION FOR TREATMENT OF EFFLUENT TO BE USED AS RE-USE WATER IN COMFORT STATION TOILETS. 2  
D5
- [27] NATIVE SOIL SURFACE REPAIR; SEE DETAIL. 1  
D1
- [40] TREAT SURFACE WITH RICE STRAW PER EROSION CONTROL PLANS.
- [43] INSTALL 4 FOOT WOODEN ACCESS GATE. SEE DETAIL. 1  
D4
- [45] CONSTRUCT NEW SOLID WOOD FENCE. SEE DETAIL. 1  
D4

- [58] INSTALL 1 INCH PVC SCH 80 WATERLINE AND ANTI-SIPHONICANT HOSE BIB.
- [59] TOP OF UNIT NOT TO EXCEED 3 FEET ABOVE GRADE. TOP OF UNIT TO BE BELOW TOP OF FENCING. 2  
D5
- [60] REMOVE 12" CMP CULVERT DURING TANK PLACEMENT; REPLACE IN KIND & GRADE.
- [62A] INSTALL LEAK PROOF WATER TIGHT SEALED, GREEN COLORED LIDS. SET TOP OF LID ELEVATION FOUR INCHES ABOVE EXISTING GRADE OR AS DETERMINED BY COR IN THE FIELD.



**NOTE: ALL EQUIPMENT USED FOR EXCAVATION & CONSTRUCTION ACTIVITIES SHALL BE AIR PRESSURE CLEANED OF SOILS AND PLANT MATERIALS. CONTRACTOR TO OBTAIN APPROVAL THAT EQUIPMENT HAS BEEN CLEANED THROUGH INSPECTION BY NPS PRIOR TO RELOCATING EQUIPMENT ON SITE.**

① PL AREA OF UNCERTAINTY. SEE RECORD OF SURVEY SHEETS EX1 THRU EX3



David Barton Brooke  
3-25-2015

DESIGNED: D.B. BROOKE CHECKED: B. GREENAN TECH. REVIEW: J. BLOM DATE: 3/2015	SUB SHEET NO. <b>C10</b>	TITLE OF SHEET <b>HORIZONTAL CONTROL &amp; FINE GRADING PLAN-FILTRATION SYSTEM REHABILITATE STINSON BEACH (WWSO)</b> STINSON BEACH GOLDEN GATE NATIONAL RECREATION AREA	DRAWING NO. <b>641</b> <b>122332A</b> PMIS/PKG NO. 164335 SHEET <b>14</b> OF <b>66</b>
---	-----------------------------	--	--

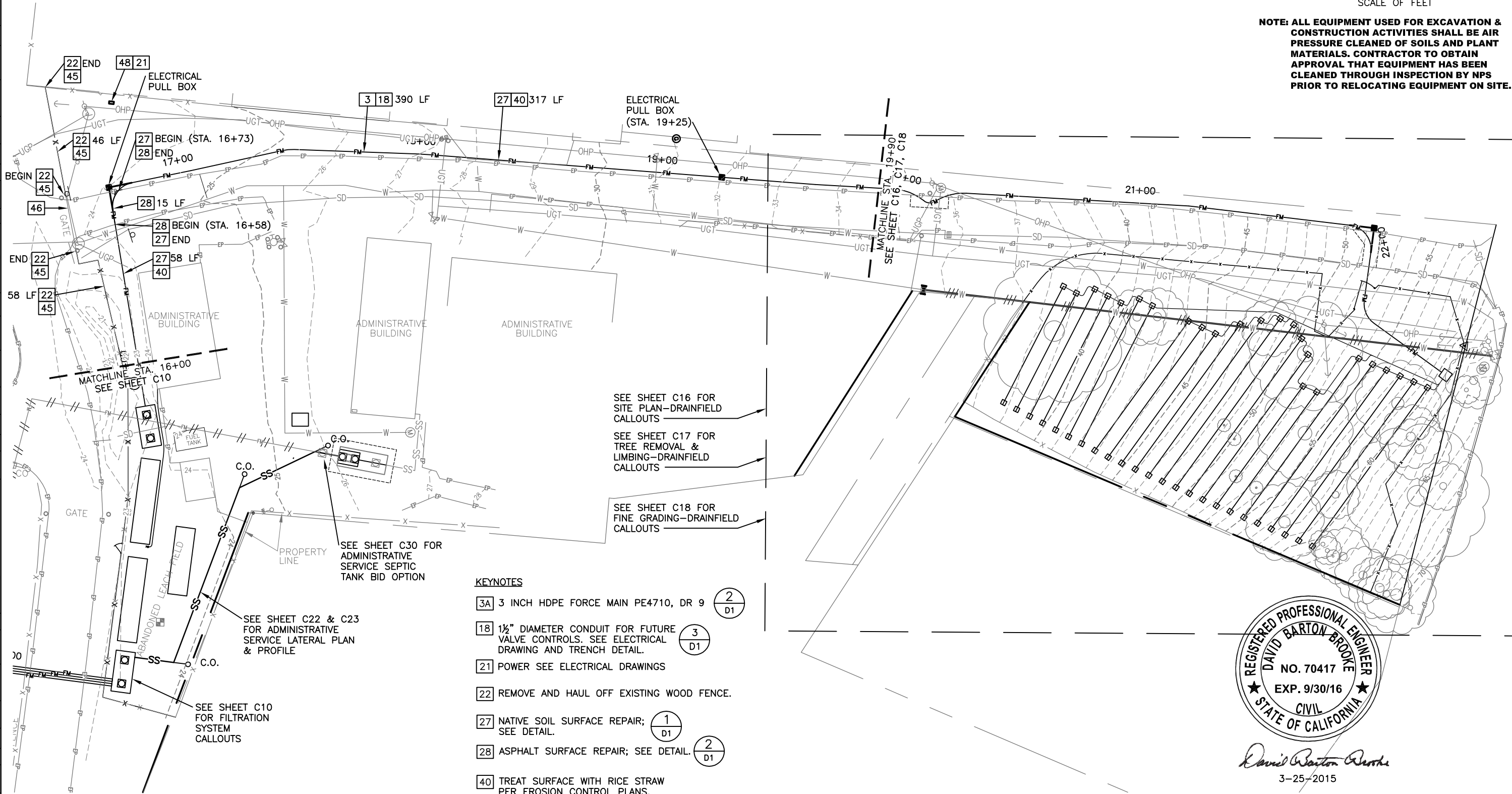


1/27/15 09:53 BOBG R19 G:\CLIENTS\NPS\COCA\164335\13-0326B\DRAWINGS\CIV\13-0326B.SET-SITEPLAN.DWG XREFS: G:\CLIENTS\NPS\COCA\164335\13-0326B\DRAWINGS\BASES\13-0326B.DSN.DWG, G:\CLIENTS\NPS\COCA\164335\13-0326B\DRAWINGS\SURV\13-0326B.TPO.DWG



20 0 20 40  
SCALE OF FEET

NOTE: ALL EQUIPMENT USED FOR EXCAVATION & CONSTRUCTION ACTIVITIES SHALL BE AIR PRESSURE CLEANED OF SOILS AND PLANT MATERIALS. CONTRACTOR TO OBTAIN APPROVAL THAT EQUIPMENT HAS BEEN CLEANED THROUGH INSPECTION BY NPS PRIOR TO RELOCATING EQUIPMENT ON SITE.



SEE SHEET C16 FOR  
SITE PLAN-DRAINFIELD  
CALLOUTS

SEE SHEET C17 FOR  
TREE REMOVAL &  
LIMBING-DRAINFIELD  
CALLOUTS

SEE SHEET C18 FOR  
FINE GRADING-DRAINFIELD  
CALLOUTS

SEE SHEET C30 FOR  
ADMINISTRATIVE  
SERVICE SEPTIC  
TANK BID OPTION

SEE SHEET C22 & C23  
FOR ADMINISTRATIVE  
SERVICE LATERAL PLAN  
& PROFILE

SEE SHEET C10  
FOR FILTRATION  
SYSTEM  
CALLOUTS

KEYNOTES

- 3A 3 INCH HDPE FORCE MAIN PE4710, DR 9  $\frac{2}{D1}$
- 18 1½" DIAMETER CONDUIT FOR FUTURE VALVE CONTROLS. SEE ELECTRICAL DRAWING AND TRENCH DETAIL.  $\frac{3}{D1}$
- 21 POWER SEE ELECTRICAL DRAWINGS
- 22 REMOVE AND HAUL OFF EXISTING WOOD FENCE.
- 27 NATIVE SOIL SURFACE REPAIR; SEE DETAIL.  $\frac{1}{D1}$
- 28 ASPHALT SURFACE REPAIR; SEE DETAIL.  $\frac{2}{D1}$
- 40 TREAT SURFACE WITH RICE STRAW PER EROSION CONTROL PLANS.
- 45 CONSTRUCT NEW SOLID WOOD FENCE. SEE DETAIL.  $\frac{1}{D4}$
- 48 POWER PAD FOR ELECTRICAL DROP. SEE ELECTRICAL DRAWINGS.



3-25-2015

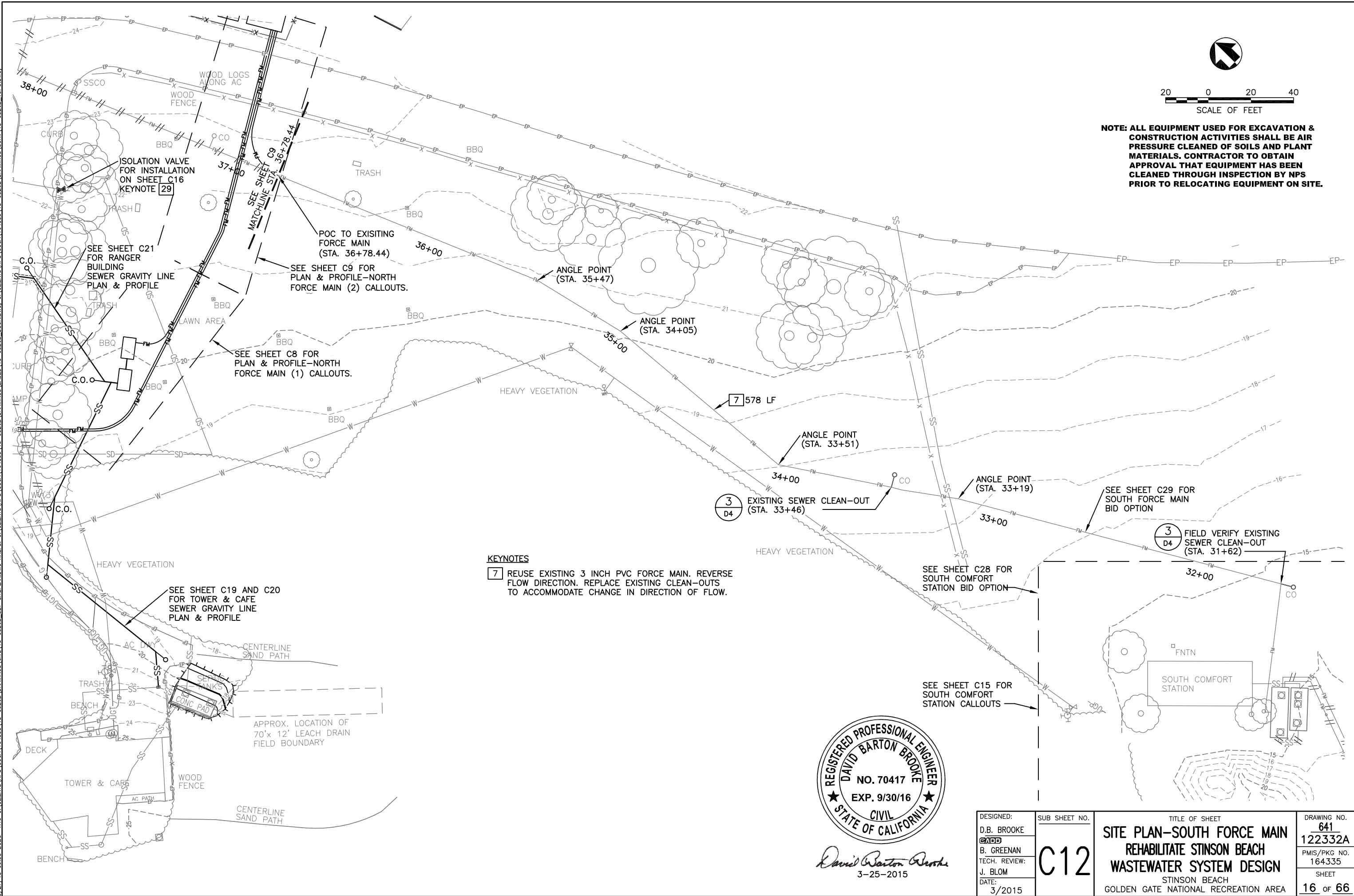
DESIGNED:  
D.B. BROOKE  
B. GREENAN  
TECH. REVIEW:  
J. BLOM  
DATE:  
3/2015

SUB SHEET NO.  
**C11**

TITLE OF SHEET  
**SITE PLAN-DRAINFIELD FORCE MAIN  
REHABILITATE STINSON BEACH  
WASTEWATER SYSTEM DESIGN**  
STINSON BEACH  
GOLDEN GATE NATIONAL RECREATION AREA

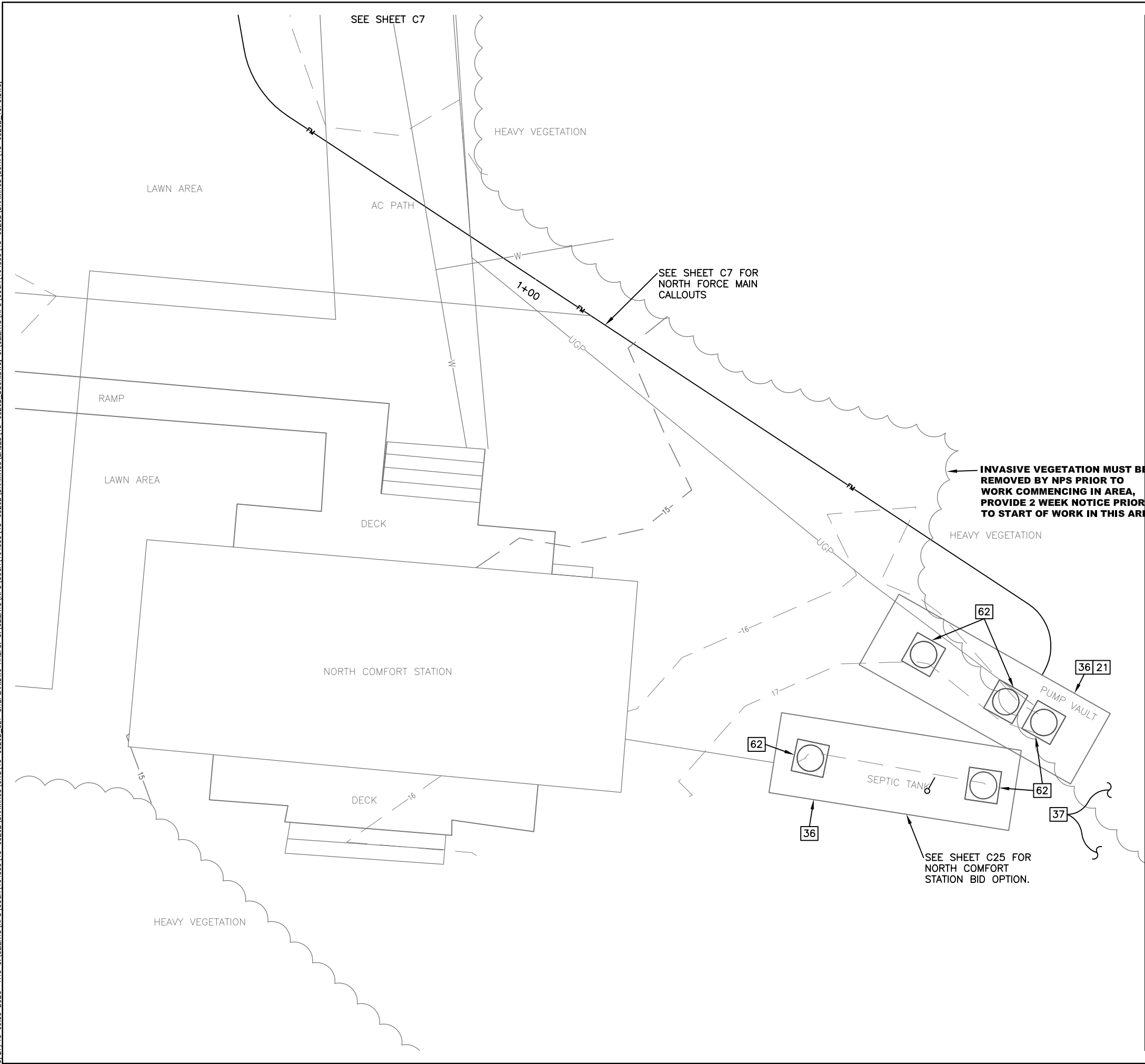
DRAWING NO.  
**641  
122332A**  
PMIS/PKG NO.  
164335  
SHEET  
**15 of 66**

1/27/15 09:53 B06G R19 G:\CLIENTS\NPS\G00A\164335\13-0326B\DRAWINGS\CIV\13-0326B.SET-SITEPLAN.DWG XREFS: G:\CLIENTS\NPS\G00A\164335\13-0326B\DRAWINGS\BASES\13-0326B.DSN.DWG G:\CLIENTS\NPS\G00A\164335\13-0326B\DRAWINGS\SURV\13-0326B.TOP.DWG





1/27/15 09:53 BOBG R19 G:\CLIENTS\NPS\GCA\164335\13-0326B\DRAWINGS\CIV\13-0326B.SET-SITEPLAN.DWG XREFS: G:\CLIENTS\NPS\GCA\164335\13-0326B\DRAWINGS\BASES\13-0326B.DSN.DWG, G:\CLIENTS\NPS\GCA\164335\13-0326B\DRAWINGS\SURV\13-0326B.TOP.DWG,



KEYNOTES

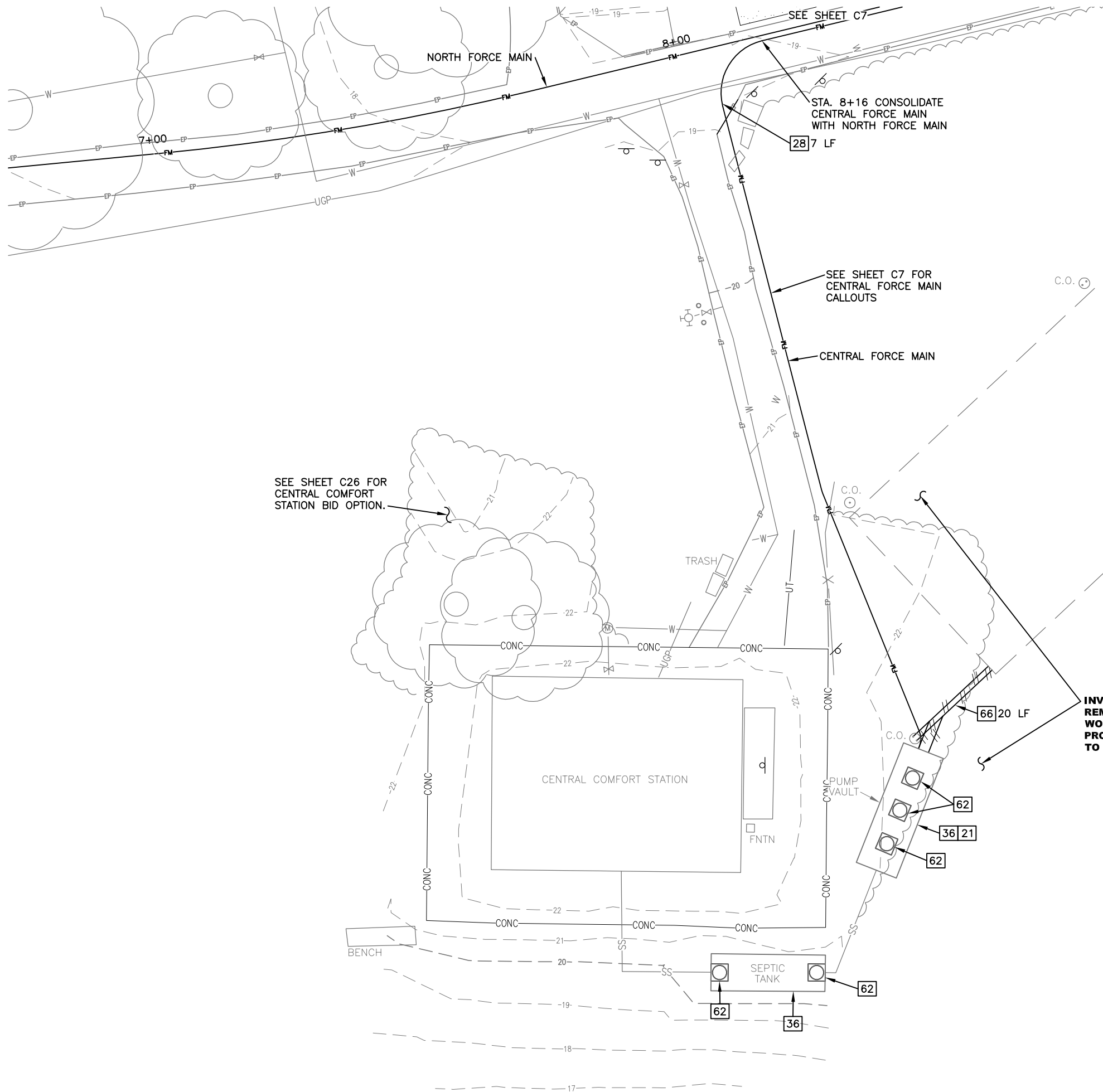
- [21] POWER SEE ELECTRICAL DRAWINGS
- [27] NATIVE SOIL SURFACE REPAIR; SEE DETAIL. 1  
D1
- [36] CLEAN, INSPECT, SEAL, HYDROSTATICALLY LEAK TEST EXISTING 6,400 GALLON SEPTIC TANK AND 5,000 GALLON PUMP VAULT. REMOVE EXISTING PUMPS AND INSTALL NEW PUMPS AND FLOAT PACKAGE COMPLETE PER SPECIFICATIONS.
- [37] REMOVE AND RETAIN EXISTING TUBER VEGETATION PER CONTRACTING OFFICER'S DIRECTION. NPS TO REPLANT TUBER VEGETATION.
- [62] REMOVE AND REPLACE EXISTING LIDS WITH NEW LEAK PROOF WATER TIGHT SEALED, GREEN COLORED LIDS. SET TOP OF LID ELEVATION FOUR INCHES ABOVE EXISTING GRADE OR AS DETERMINED BY COR IN THE FIELD.



*David Barton Brooke*  
3-25-2015

DESIGNED: D.B. BROOKE B. GREENAN TECH. REVIEW: J. BLOM DATE: 3/2015	SUB SHEET NO.  <b>C13</b>	TITLE OF SHEET <b>SITE PLAN-NORTH COMFORT STATION REHABILITATE STINSON BEACH WASTEWATER SYSTEM DESIGN</b> STINSON BEACH GOLDEN GATE NATIONAL RECREATION AREA	DRAWING NO. <b>641</b> <b>122332A</b> PMIS/PKG NO. 164335 SHEET <b>17</b> OF <b>66</b>
---	---------------------------------	---	--

1/27/15 09:53 BOBG R19 G:\CLIENTS\NPS\GCA\164335\13-0326B\DRAWINGS\CIVIL\13-0326B.SET-SITEPLAN.DWG XREFS: G:\CLIENTS\NPS\GCA\164335\13-0326B\DRAWINGS\BASES\13-0326B.DSN.DWG, G:\CLIENTS\NPS\GCA\164335\13-0326B\DRAWINGS\SURV\13-0326B.TOP.DWG, 3/27/15 09:53 BOBG R19 G:\CLIENTS\NPS\GCA\164335\13-0326B\DRAWINGS\CIVIL\13-0326B.SET-SITEPLAN.DWG XREFS: G:\CLIENTS\NPS\GCA\164335\13-0326B\DRAWINGS\BASES\13-0326B.DSN.DWG, G:\CLIENTS\NPS\GCA\164335\13-0326B\DRAWINGS\SURV\13-0326B.TOP.DWG



APPROXIMATE LOCATION OF 124'x 40' LEACH DRAIN FIELD BOUNDARY

**NOTE: ALL EQUIPMENT USED FOR EXCAVATION & CONSTRUCTION ACTIVITIES SHALL BE AIR PRESSURE CLEANED OF SOILS AND PLANT MATERIALS. CONTRACTOR TO OBTAIN APPROVAL THAT EQUIPMENT HAS BEEN CLEANED THROUGH INSPECTION BY NPS PRIOR TO RELOCATING EQUIPMENT ON SITE.**

**KEYNOTES**

- 21** POWER SEE ELECTRICAL DRAWINGS
- 27** NATIVE SOIL SURFACE REPAIR; SEE DETAIL. 1  
D1
- 28** ASPHALT SURFACE REPAIR; SEE DETAIL. 2  
D1
- 36** CLEAN, INSPECT, SEAL, HYDROSTATICALLY LEAK TEST EXISTING 6,400 GALLON SEPTIC TANK AND 5,000 GALLON PUMP VAULT. REMOVE EXISTING PUMPS AND INSTALL NEW PUMPS AND FLOAT PACKAGE COMPLETE PER SPECIFICATIONS.
- 62** REMOVE AND REPLACE EXISTING LIDS WITH NEW LEAK PROOF WATER TIGHT SEALED, GREEN COLORED LIDS. SET TOP OF LID ELEVATION FOUR INCHES ABOVE EXISTING GRADE OR AS DETERMINED BY COR IN THE FIELD.
- 66** ABANDON IN PLACE, FILL ABANDONED LINE WITH SLURRY.

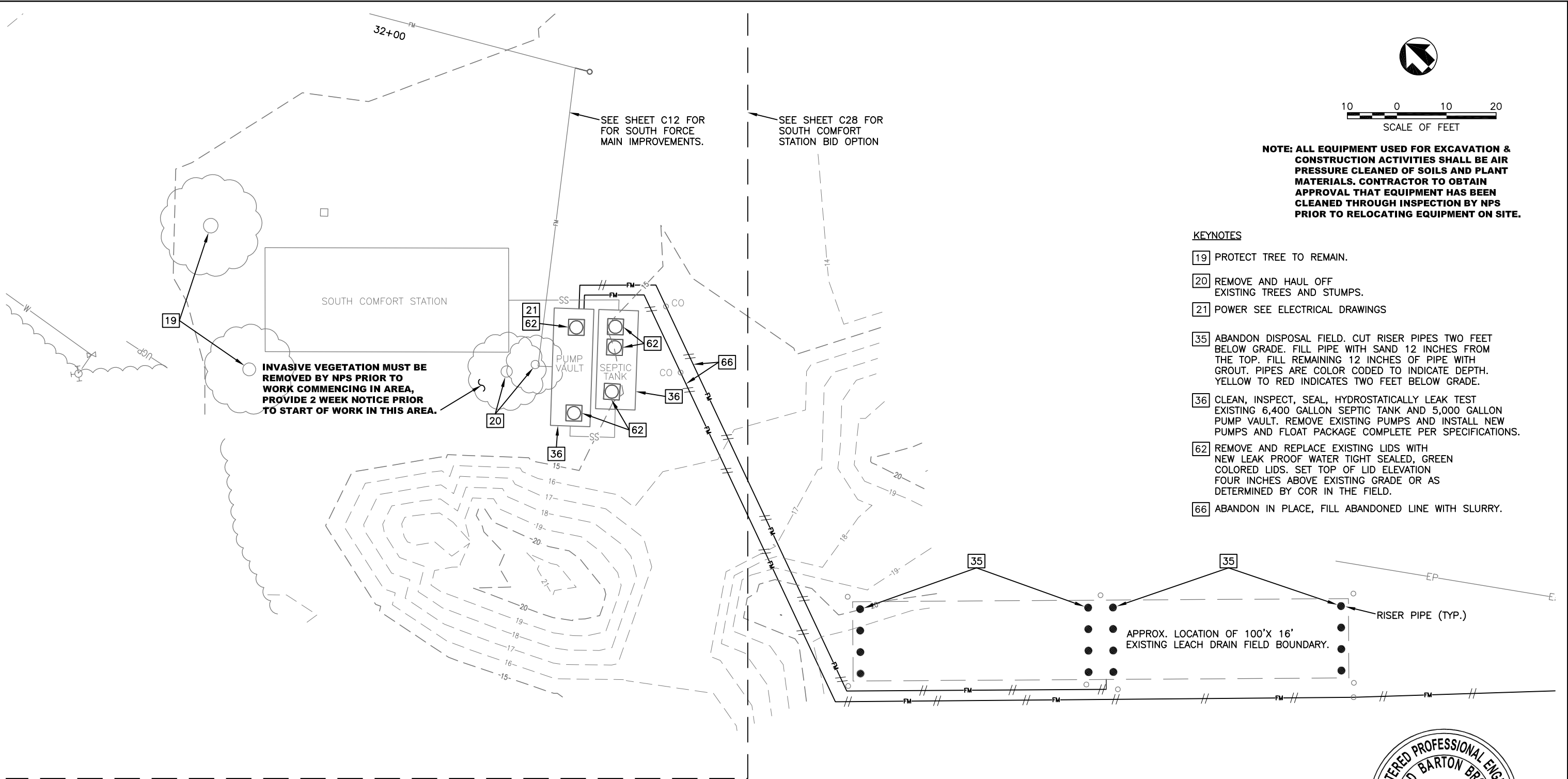
**INVASIVE VEGETATION MUST BE REMOVED BY NPS PRIOR TO WORK COMMENCING IN AREA, PROVIDE 2 WEEK NOTICE PRIOR TO START OF WORK IN THIS AREA.**



*David Barton Brooke*  
3-25-2015

DESIGNED: D.B. BROOKE CHECKED: B. GREENAN TECH. REVIEW: J. BLOM DATE: 3/2015	SUB SHEET NO.  <b>C14</b>	TITLE OF SHEET <b>SITE PLAN-CENTRAL COMFORT STATION REHABILITATE STINSON BEACH WASTEWATER SYSTEM DESIGN</b> STINSON BEACH GOLDEN GATE NATIONAL RECREATION AREA	DRAWING NO. <b>641</b> <b>122332A</b> PMIS/PKG NO. 164335 SHEET <b>18</b> of <b>66</b>
---	---------------------------------	---	--

1/27/15 09:53 BOBG R19 G:\CLIENTS\NPS\GCA\164335\13-0326B\DRAWINGS\CIVIL\13-0326B.SET-SITEPLAN.DWG XREFS: G:\CLIENTS\NPS\GCA\164335\13-0326B\DRAWINGS\BASES\13-0326B.DSN.DWG, G:\CLIENTS\NPS\GCA\164335\13-0326B\DRAWINGS\SURV\13-0326B.TPO.DWG,

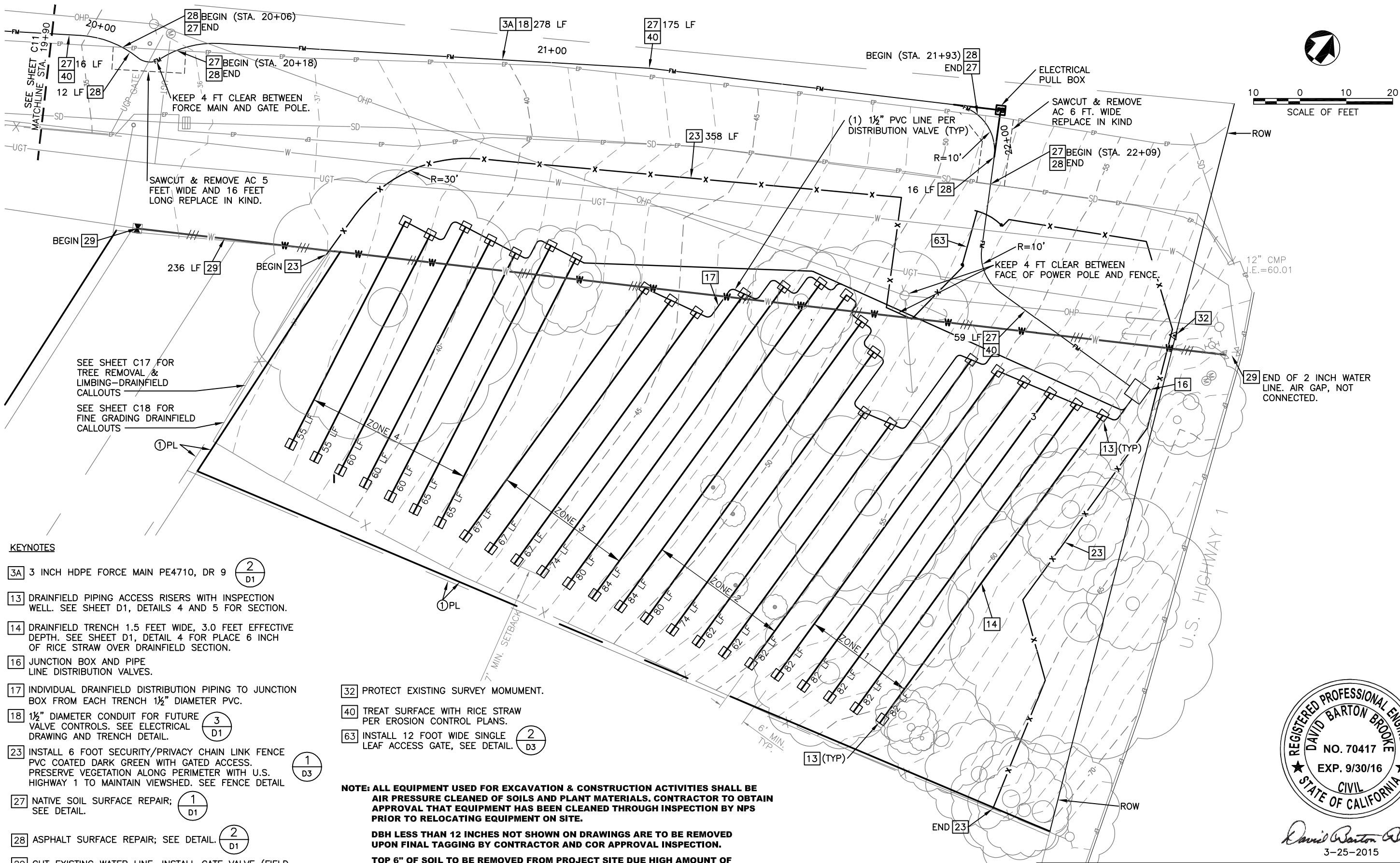


David Barton Brooke  
3-25-2015

DESIGNED: D.B. BROOKE B. GREENAN TECH. REVIEW: J. BLOM DATE: 3/2015	SUB SHEET NO.  <b>C15</b>	TITLE OF SHEET <b>SITE PLAN-SOUTH COMFORT STATION REHABILITATE STINSON BEACH WASTEWATER SYSTEM DESIGN</b> STINSON BEACH GOLDEN GATE NATIONAL RECREATION AREA	DRAWING NO. <b>641</b> <b>122332A</b> PMIS/PKG NO. 164335 SHEET <b>19 of 66</b>
---	---------------------------------	---	---



1/27/15 09:53 B06G R19 G:\CLIENTS\NPS\GCA\164335\13-0326B\DRAWINGS\CIVIL\13-0326B.SET-SITEPLAN.DWG XREFS: G:\CLIENTS\NPS\GCA\164335\13-0326B\DRAWINGS\BASES\13-0326B.DWG G:\CLIENTS\NPS\GCA\164335\13-0326B\DRAWINGS\SURV\13-0326B.TOP.DWG



KEYNOTES

- 3A 3 INCH HDPE FORCE MAIN PE4710, DR 9  $\frac{2}{D1}$
- 13 DRAINFIELD PIPING ACCESS RISERS WITH INSPECTION WELL. SEE SHEET D1, DETAILS 4 AND 5 FOR SECTION.
- 14 DRAINFIELD TRENCH 1.5 FEET WIDE, 3.0 FEET EFFECTIVE DEPTH. SEE SHEET D1, DETAIL 4 FOR PLACE 6 INCH OF RICE STRAW OVER DRAINFIELD SECTION.
- 16 JUNCTION BOX AND PIPE LINE DISTRIBUTION VALVES.
- 17 INDIVIDUAL DRAINFIELD DISTRIBUTION PIPING TO JUNCTION BOX FROM EACH TRENCH 1 1/2" DIAMETER PVC.
- 18 1 1/2" DIAMETER CONDUIT FOR FUTURE VALVE CONTROLS. SEE ELECTRICAL DRAWING AND TRENCH DETAIL.  $\frac{3}{D1}$
- 23 INSTALL 6 FOOT SECURITY/PRIVACY CHAIN LINK FENCE PVC COATED DARK GREEN WITH GATED ACCESS. PRESERVE VEGETATION ALONG PERIMETER WITH U.S. HIGHWAY 1 TO MAINTAIN VIEWSHED. SEE FENCE DETAIL  $\frac{1}{D3}$
- 27 NATIVE SOIL SURFACE REPAIR; SEE DETAIL.  $\frac{1}{D1}$
- 28 ASPHALT SURFACE REPAIR; SEE DETAIL.  $\frac{2}{D1}$
- 29 CUT EXISTING WATER LINE. INSTALL GATE VALVE (FIELD VERIFY 2 INCH OR 1 1/2 INCH WATER LINE, GATE VALVE SIZE TO MATCH WATER LINE) SEE SHEET C12 FOR LOCATION TO ISOLATE WATER LINE. FLUSHING AND SAMPLING BY CONTRACTOR. REMOVE ABANDONED PORTION IN DRAINFIELD.
- 30 SAWCUT 2 FEET WIDE AND REMOVE EXISTING CONCRETE. REPLACE IN KIND.

- 32 PROTECT EXISTING SURVEY MONUMENT.
- 40 TREAT SURFACE WITH RICE STRAW PER EROSION CONTROL PLANS.
- 63 INSTALL 12 FOOT WIDE SINGLE LEAF ACCESS GATE, SEE DETAIL.  $\frac{2}{D3}$

**NOTE: ALL EQUIPMENT USED FOR EXCAVATION & CONSTRUCTION ACTIVITIES SHALL BE AIR PRESSURE CLEANED OF SOILS AND PLANT MATERIALS. CONTRACTOR TO OBTAIN APPROVAL THAT EQUIPMENT HAS BEEN CLEANED THROUGH INSPECTION BY NPS PRIOR TO RELOCATING EQUIPMENT ON SITE.**

**DBH LESS THAN 12 INCHES NOT SHOWN ON DRAWINGS ARE TO BE REMOVED UPON FINAL TAGGING BY CONTRACTOR AND COR APPROVAL INSPECTION.**

**TOP 6" OF SOIL TO BE REMOVED FROM PROJECT SITE DUE HIGH AMOUNT OF INVASIVE PLANTS; ALL TREES AND VEGETATION SHOWN FOR REMOVAL WILL BE REMOVED FROM SITE.**

①PL AREA OF UNCERTAINTY. SEE RECORD OF SURVEY SHEETS EX1 THRU EX3.

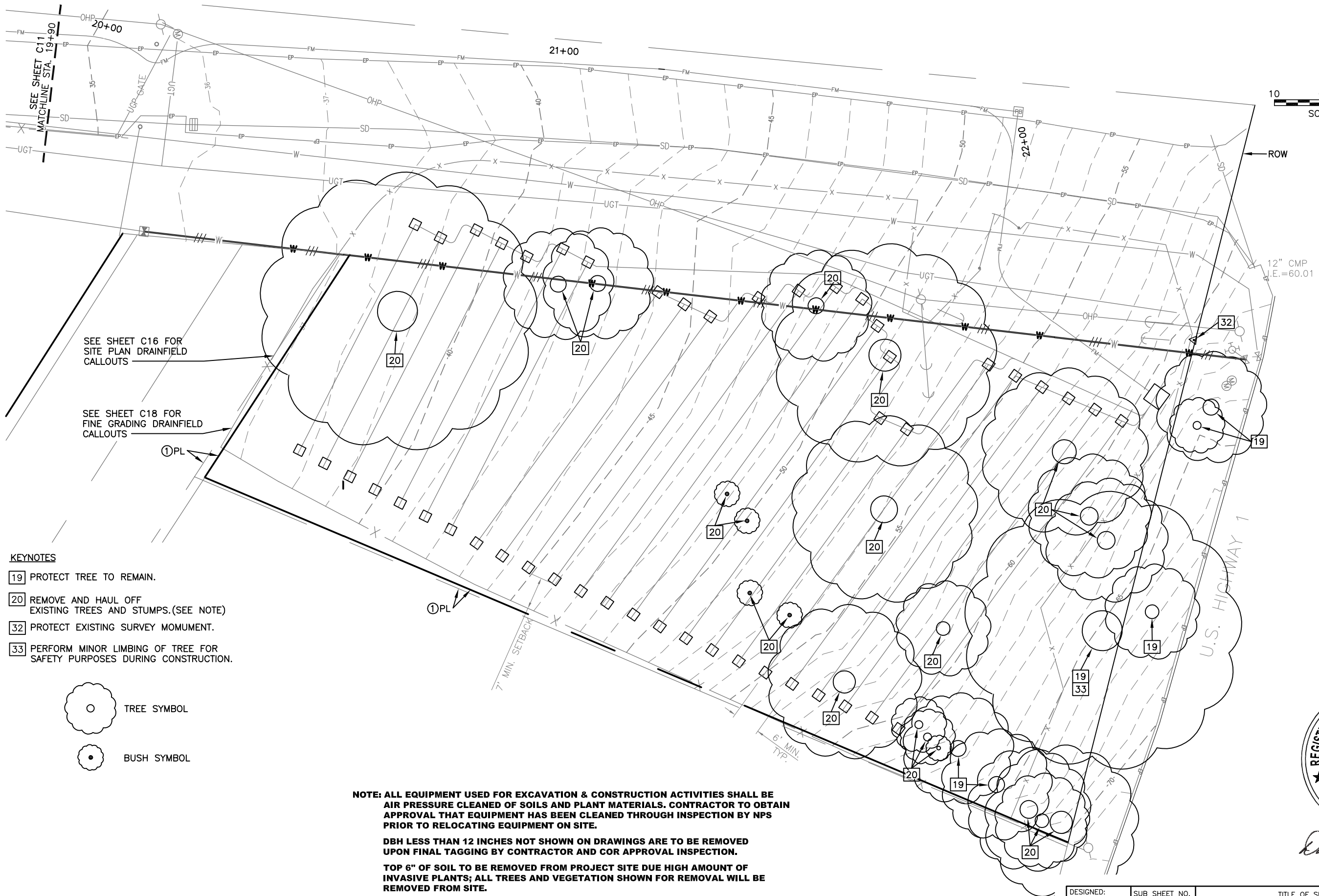
**NPS TO RE-VEGETATE DRAINFIELD AREA. CONTRACTOR TO LEAVE SITE WITH 6 INCHES RICE STRAW & WADDLES.**



David Barton Brooke  
3-25-2015

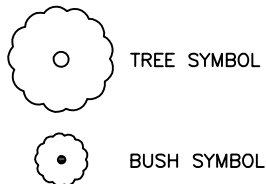
DESIGNED: D.B. BROOKE CHECKED: B. GREENAN TECH. REVIEW: J. BLOM DATE: 3/2015	SUB SHEET NO.  <b>C16</b>	TITLE OF SHEET <b>SITE PLAN-DRAINFIELD REHABILITATE STINSON BEACH WASTEWATER SYSTEM DESIGN</b> STINSON BEACH GOLDEN GATE NATIONAL RECREATION AREA	DRAWING NO. <b>641 122332A</b> PMIS/PKG NO. 164335 SHEET <b>20 of 66</b>
---	---------------------------------	--	---

1/27/15 09:53 BOBG R19 G:\CLIENTS\NPS\GOGA\164335\13-0326B\DRAWINGS\CIVIL\13-0326B.SET-SITEPLAN.DWG XREFS: G:\CLIENTS\NPS\GOGA\164335\13-0326B\DRAWINGS\BASES\13-0326B.DSN.DWG, G:\CLIENTS\NPS\GOGA\164335\13-0326B\DRAWINGS\SURV\13-0326B.TPO.DWG



KEYNOTES

- 19 PROTECT TREE TO REMAIN.
- 20 REMOVE AND HAUL OFF EXISTING TREES AND STUMPS.(SEE NOTE)
- 32 PROTECT EXISTING SURVEY MONUMENT.
- 33 PERFORM MINOR LIMBING OF TREE FOR SAFETY PURPOSES DURING CONSTRUCTION.



**NOTE: ALL EQUIPMENT USED FOR EXCAVATION & CONSTRUCTION ACTIVITIES SHALL BE AIR PRESSURE CLEANED OF SOILS AND PLANT MATERIALS. CONTRACTOR TO OBTAIN APPROVAL THAT EQUIPMENT HAS BEEN CLEANED THROUGH INSPECTION BY NPS PRIOR TO RELOCATING EQUIPMENT ON SITE.**

**DBH LESS THAN 12 INCHES NOT SHOWN ON DRAWINGS ARE TO BE REMOVED UPON FINAL TAGGING BY CONTRACTOR AND COR APPROVAL INSPECTION.**

**TOP 6" OF SOIL TO BE REMOVED FROM PROJECT SITE DUE HIGH AMOUNT OF INVASIVE PLANTS; ALL TREES AND VEGETATION SHOWN FOR REMOVAL WILL BE REMOVED FROM SITE.**

**1PL AREA OF UNCERTAINTY. SEE RECORD OF SURVEY SHEETS EX1 THRU EX3.**

**NPS TO RE-VEGETATE DRAINFIELD AREA. CONTRACTOR TO LEAVE SITE WITH 6 INCHES RICE STRAW & WADDLES.**

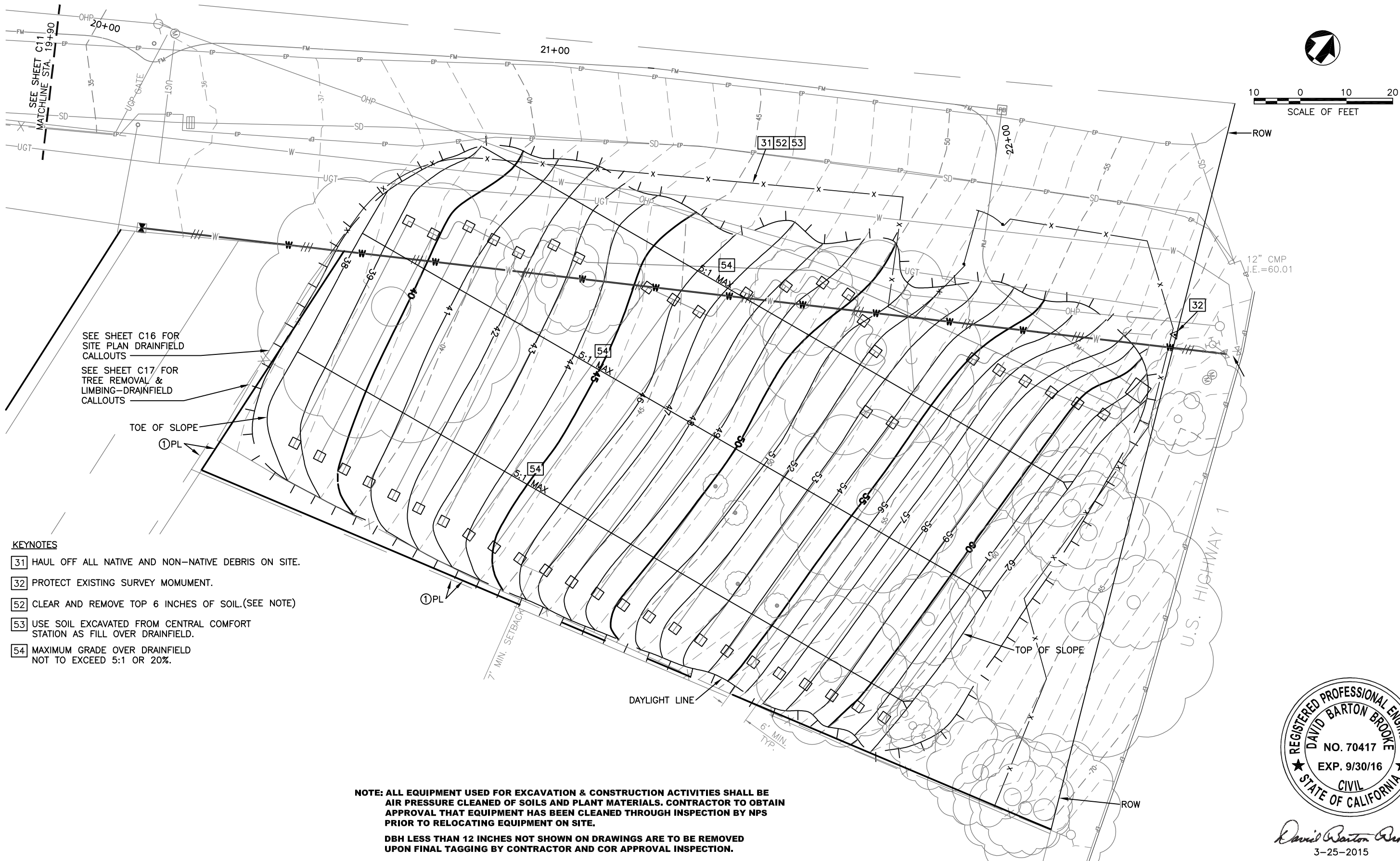


*David Barton Brooke*  
3-25-2015

DESIGNED: D.B. BROOKE GADD B. GREENAN TECH. REVIEW: J. BLOM DATE: 3/2015	SUB SHEET NO.  <b>C17</b>	TITLE OF SHEET <b>TREE REMOVAL &amp; LIMBING-DRAINFIELD REHABILITATE STINSON BEACH WASTEWATER SYSTEM DESIGN</b> STINSON BEACH GOLDEN GATE NATIONAL RECREATION AREA	DRAWING NO. <b>641</b> <b>122332A</b> PMIS/PKG NO. 164335 SHEET <b>21</b> of <b>66</b>
---	---------------------------------	---	--



1/27/15 09:53 B06G R19 G:\CLIENTS\NPS\GOGA\164335\13-0326B\DRAWINGS\CIVIL\13-0326B.SET-SITEPLAN.DWG XREFS: G:\CLIENTS\NPS\GOGA\164335\13-0326B\DRAWINGS\BASES\13-0326B.DSN.DWG, G:\CLIENTS\NPS\GOGA\164335\13-0326B\DRAWINGS\SURV\13-0326B.TOP.DWG.



KEYNOTES

- 31 HAUL OFF ALL NATIVE AND NON-NATIVE DEBRIS ON SITE.
- 32 PROTECT EXISTING SURVEY MOMUMENT.
- 52 CLEAR AND REMOVE TOP 6 INCHES OF SOIL.(SEE NOTE)
- 53 USE SOIL EXCAVATED FROM CENTRAL COMFORT STATION AS FILL OVER DRAINFIELD.
- 54 MAXIMUM GRADE OVER DRAINFIELD NOT TO EXCEED 5:1 OR 20%.

**NOTE: ALL EQUIPMENT USED FOR EXCAVATION & CONSTRUCTION ACTIVITIES SHALL BE AIR PRESSURE CLEANED OF SOILS AND PLANT MATERIALS. CONTRACTOR TO OBTAIN APPROVAL THAT EQUIPMENT HAS BEEN CLEANED THROUGH INSPECTION BY NPS PRIOR TO RELOCATING EQUIPMENT ON SITE.**

**DBH LESS THAN 12 INCHES NOT SHOWN ON DRAWINGS ARE TO BE REMOVED UPON FINAL TAGGING BY CONTRACTOR AND COR APPROVAL INSPECTION.**

**TOP 6" OF SOIL TO BE REMOVED FROM PROJECT SITE DUE HIGH AMOUNT OF INVASIVE PLANTS; ALL TREES AND VEGETATION SHOWN FOR REMOVAL WILL BE REMOVED FROM SITE.**

**①PL AREA OF UNCERTAINTY. SEE RECORD OF SURVEY SHEETS EX1 THRU EX3.**

**NPS TO RE-VEGETATE DRAINFIELD AREA. CONTRACTOR TO LEAVE SITE WITH 6 INCHES RICE STRAW & WADDLES.**

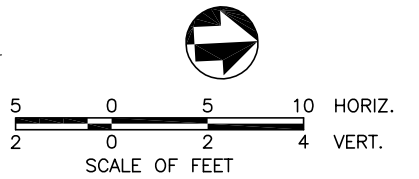
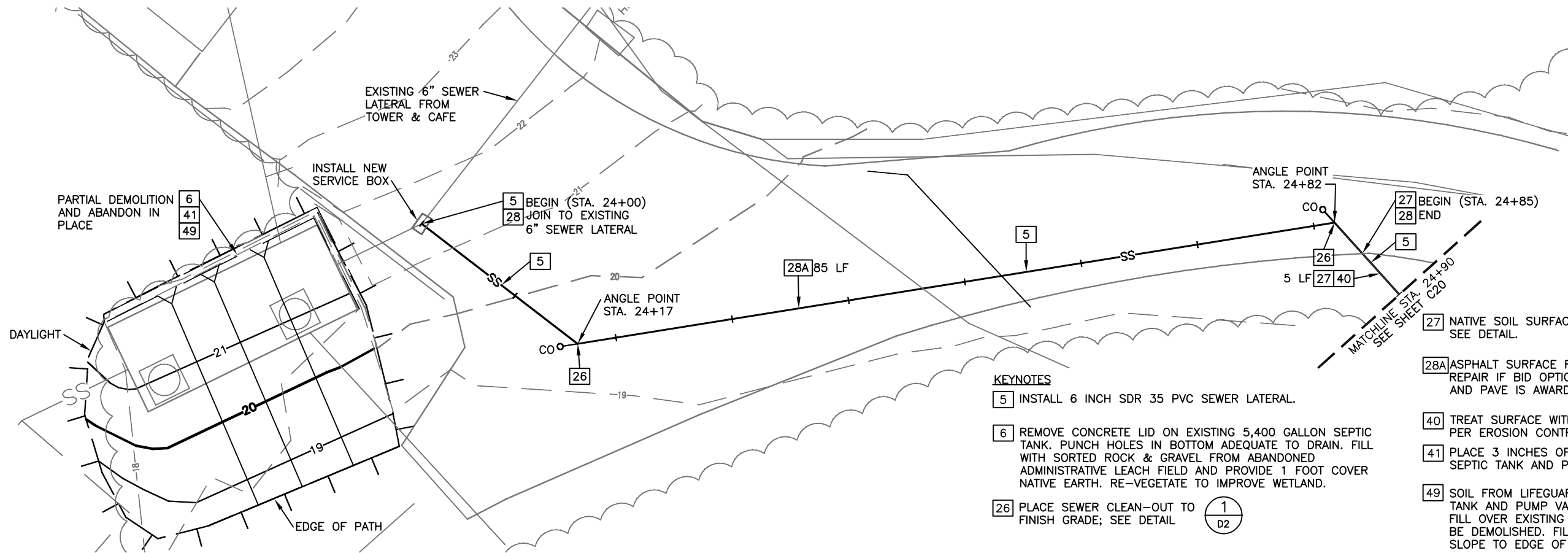


*David Barton Brooke*  
3-25-2015

DESIGNED: D.B. BROOKE B. GREENAN TECH. REVIEW: J. BLOM DATE: 3/2015	SUB SHEET NO.  <b>C18</b>	TITLE OF SHEET <b>FINE GRADING PLAN-DRAINFIELD REHABILITATE STINSON BEACH WASTEWATER SYSTEM DESIGN</b> STINSON BEACH GOLDEN GATE NATIONAL RECREATION AREA	DRAWING NO. <b>641</b> <b>122332A</b> PMIS/PKG NO. 164335 SHEET <b>22</b> of <b>66</b>
---	---------------------------------	--	--



1/27/15 09:53 B08G R19 G:\CLIENTS\NPS\G00A\164335\13-0326B\DRAWINGS\CIVIL\13-0326B.SET-SITEPLAN.DWG XREFS: G:\CLIENTS\NPS\G00A\164335\13-0326B\DRAWINGS\BASES\13-0326B.DSN.DWG, G:\CLIENTS\NPS\G00A\164335\13-0326B\DRAWINGS\SURV\13-0326B.TPO.DWG



**NOTE: ALL EQUIPMENT USED FOR EXCAVATION & CONSTRUCTION ACTIVITIES SHALL BE AIR PRESSURE CLEANED OF SOILS AND PLANT MATERIALS. CONTRACTOR TO OBTAIN APPROVAL THAT EQUIPMENT HAS BEEN CLEANED THROUGH INSPECTION BY NPS PRIOR TO RELOCATING EQUIPMENT ON SITE.**

**KEYNOTES**

**5** INSTALL 6 INCH SDR 35 PVC SEWER LATERAL.

**6** REMOVE CONCRETE LID ON EXISTING 5,400 GALLON SEPTIC TANK. PUNCH HOLES IN BOTTOM ADEQUATE TO DRAIN. FILL WITH SORTED ROCK & GRAVEL FROM ABANDONED ADMINISTRATIVE LEACH FIELD AND PROVIDE 1 FOOT COVER NATIVE EARTH. RE-VEGETATE TO IMPROVE WETLAND.

**26** PLACE SEWER CLEAN-OUT TO FINISH GRADE; SEE DETAIL **1**  
**D2**

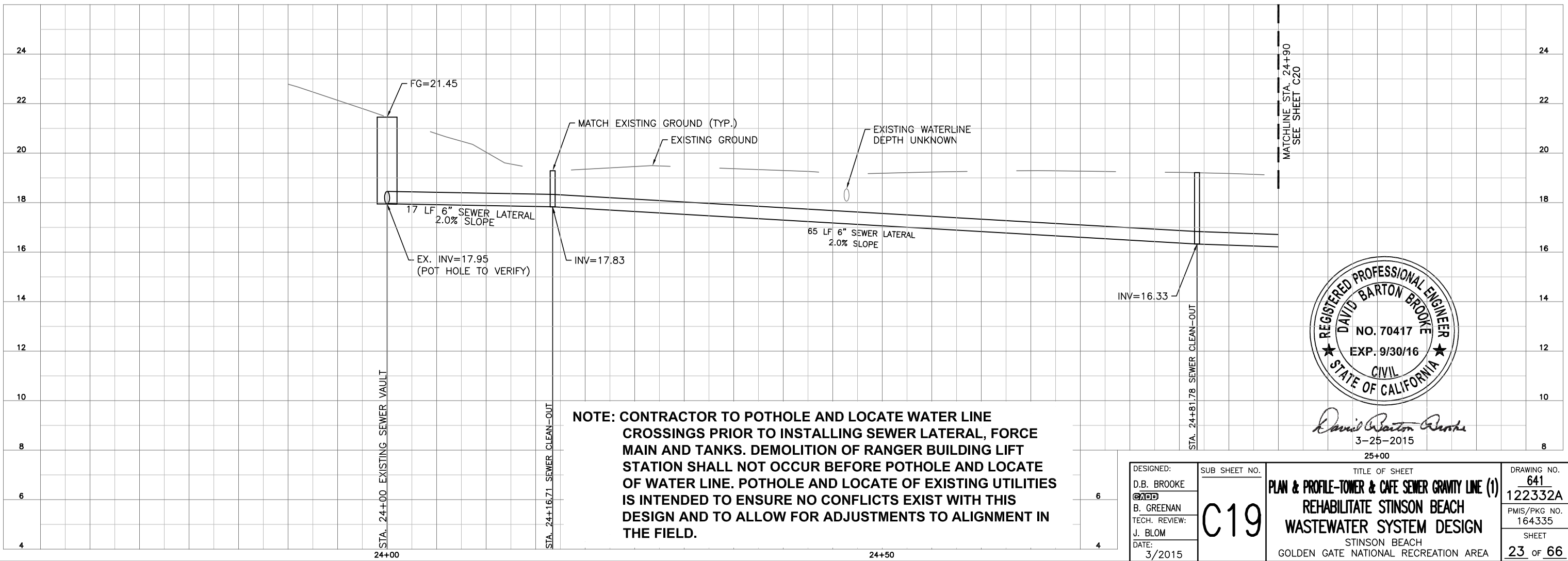
**27** NATIVE SOIL SURFACE REPAIR; SEE DETAIL. **1**  
**D1**

**28A** ASPHALT SURFACE REPAIR, DO NOT REPAIR IF BID OPTION TO MILL GRIND AND PAVE IS AWARDED; SEE DETAIL. **2**  
**D1**

**40** TREAT SURFACE WITH RICE STRAW PER EROSION CONTROL PLANS.

**41** PLACE 3 INCHES OF RICE STRAW OVER ALL SEPTIC TANK AND PUMP VAULT EXCAVATION.

**49** SOIL FROM LIFEGUARD TOWER/RANGER BUILDING SEPTIC TANK AND PUMP VAULT EXCAVATION. TO BE USED AS FILL OVER EXISTING LIFEGUARD TOWER SEPTIC TANK TO BE DEMOLISHED. FILL TO TOP OF RETAINING WALL AND SLOPE TO EDGE OF EXISTING PATHWAY.



**NOTE: CONTRACTOR TO POTHOLE AND LOCATE WATER LINE CROSSINGS PRIOR TO INSTALLING SEWER LATERAL, FORCE MAIN AND TANKS. DEMOLITION OF RANGER BUILDING LIFT STATION SHALL NOT OCCUR BEFORE POTHOLE AND LOCATE OF WATER LINE. POTHOLE AND LOCATE OF EXISTING UTILITIES IS INTENDED TO ENSURE NO CONFLICTS EXIST WITH THIS DESIGN AND TO ALLOW FOR ADJUSTMENTS TO ALIGNMENT IN THE FIELD.**



*David Barton Brooke*  
3-25-2015  
25+00

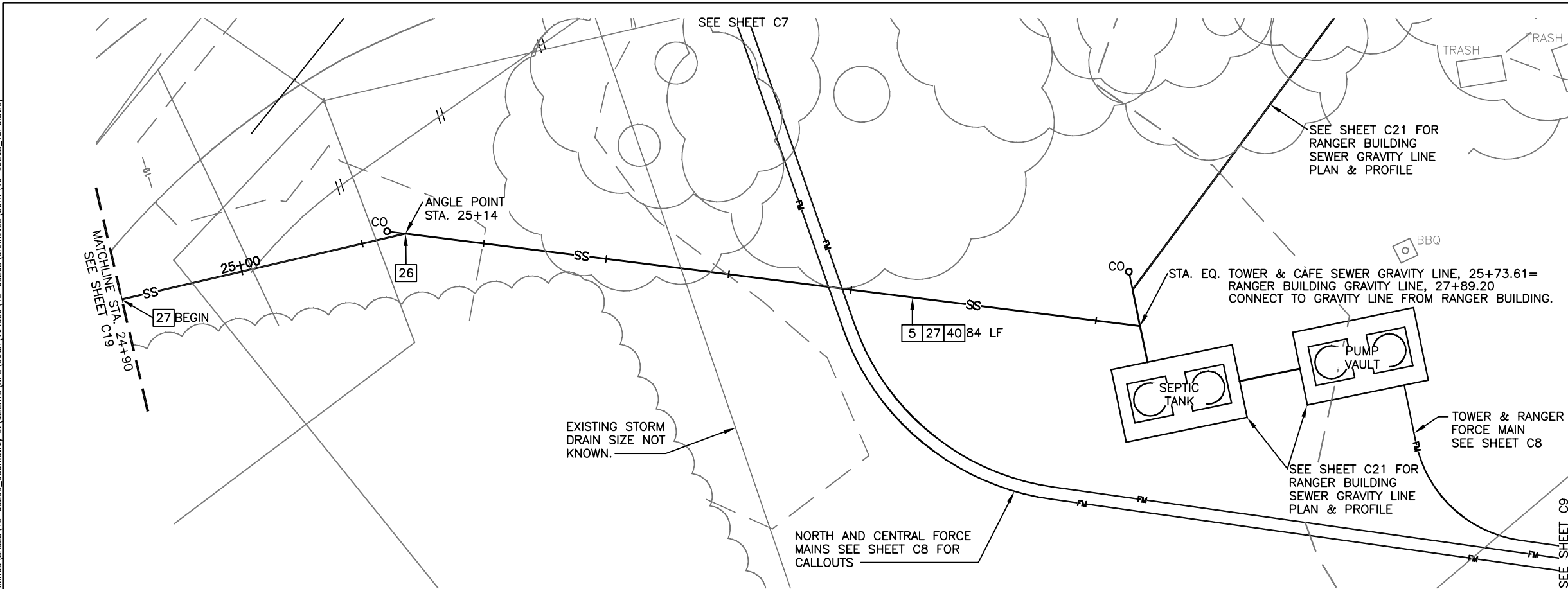
DESIGNED:  
D.B. BROOKE  
CHECKED:  
B. GREENAN  
TECH. REVIEW:  
J. BLOM  
DATE:  
3/2015

SUB SHEET NO.  
**C19**

TITLE OF SHEET  
**PLAN & PROFILE-TOWER & CAFE SEWER GRAVITY LINE (1)  
REHABILITATE STINSON BEACH  
WASTEWATER SYSTEM DESIGN**  
STINSON BEACH  
GOLDEN GATE NATIONAL RECREATION AREA

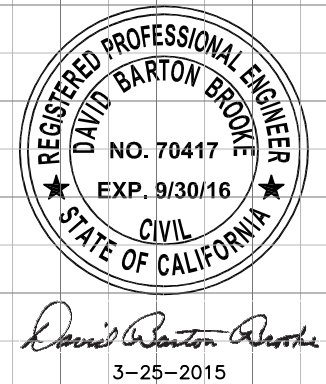
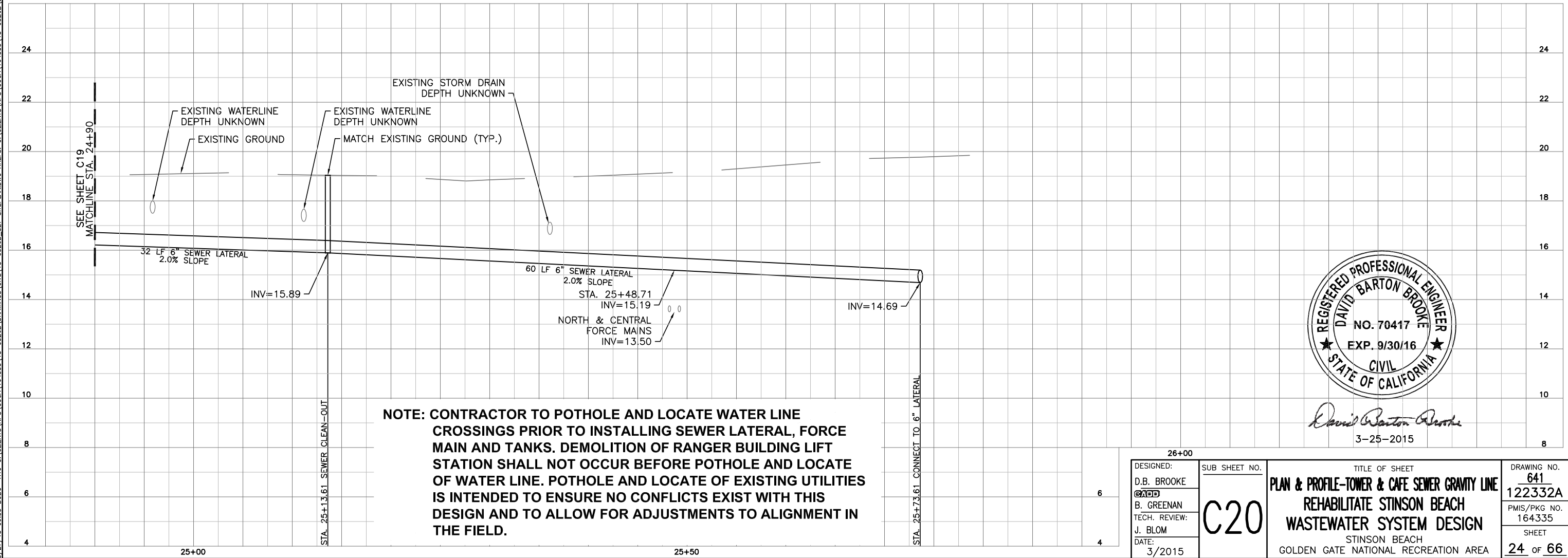
DRAWING NO.  
**641**  
**122332A**  
PMIS/PKG NO.  
164335  
SHEET  
**23** OF **66**

I:\27\15 0953 B08G R19 G:\CLIENTS\NPS\G00A\164335\13-0326B\DRAWINGS\CIVIL\13-0326B.SET-SITEPLAN.DWG XREFS: G:\CLIENTS\NPS\G00A\164335\13-0326B\DRAWINGS\BASES\13-0326B.DSN.DWG, G:\CLIENTS\NPS\G00A\164335\13-0326B\DRAWINGS\SURV\13-0326B.TOP.DWG, 3/27/15 0953 B08G R19 G:\CLIENTS\NPS\G00A\164335\13-0326B\DRAWINGS\CIVIL\13-0326B.SET-SITEPLAN.DWG XREFS: G:\CLIENTS\NPS\G00A\164335\13-0326B\DRAWINGS\BASES\13-0326B.DSN.DWG, G:\CLIENTS\NPS\G00A\164335\13-0326B\DRAWINGS\SURV\13-0326B.TOP.DWG



**NOTE: ALL EQUIPMENT USED FOR EXCAVATION & CONSTRUCTION ACTIVITIES SHALL BE AIR PRESSURE CLEANED OF SOILS AND PLANT MATERIALS. CONTRACTOR TO OBTAIN APPROVAL THAT EQUIPMENT HAS BEEN CLEANED THROUGH INSPECTION BY NPS PRIOR TO RELOCATING EQUIPMENT ON SITE.**

- KEYNOTES**
- 5 INSTALL 6 INCH SDR 35 PVC SEWER LATERAL.
  - 26 PLACE SEWER CLEAN-OUT TO FINISH GRADE; SEE DETAIL
  - 27 NATIVE SOIL SURFACE REPAIR; SEE DETAIL.
  - 40 TREAT SURFACE WITH RICE STRAW PER EROSION CONTROL PLANS.



DESIGNED: D.B. BROOKE CHECKED: B. GREENAN TECH. REVIEW: J. BLOM DATE: 3/2015	SUB SHEET NO.  <b>C20</b>	TITLE OF SHEET <b>PLAN &amp; PROFILE-TOWER &amp; CAFE SEWER GRAVITY LINE REHABILITATE STINSON BEACH WASTEWATER SYSTEM DESIGN</b> STINSON BEACH GOLDEN GATE NATIONAL RECREATION AREA	DRAWING NO. <b>641 122332A</b> PMIS/PKG NO. 164335 SHEET <b>24 of 66</b>
---	---------------------------------	--	---