



ENVIRONMENTAL COST MANAGEMENT, INC.
Managing Cost and Liability

3525 Hyland Avenue, Suite 200
Costa Mesa, California 92626
Main: (714) 662-2759 Fax: (714) 662-2758
www.ecostmanage.com

August 13, 2013

General Public via Web

Dear Interested Party:

Environmental Cost Management, Inc. (ECM), on behalf of the United States Department of the Interior National Park Service (NPS), sends this letter to notify your agency of the of environmental work in the immediate vicinity of the potable water tank at Devils Postpile National Monument (DEPO) in Madera County, California (Figure 1).

As a result of historic maintenance activities at the potable water tank, the potential exists that lead-based paint from the exterior of the water tank has impacted surface soils immediately surrounding the water tank (Figure 2). The NPS is in the process of assessing this site under the Comprehensive Environmental Response, Compensation, and Liability Act (CERCLA). The CERCLA process has a key community outreach component, established by Congress in 1986, to ensure that citizens living or working near CERCLA sites are given the opportunity to influence decisions affecting their community.

Environmental work involves sampling potentially lead-impacted surface soils within 25 feet of the monument's potable water storage tank to determine appropriate response activities for this site (Figure 2). Sampling work occurred during summer 2013. Currently, ECM is preparing a Draft Engineering Evaluation/Cost Analysis (EE/CA), which will be placed in a public repository at the Mammoth Lakes Library in the fall of 2013. The Draft EE/CA will also be available in the Administrative Record File with other relevant site documents at the NPS Planning, Environment, and Public Comment (PEPC) website: <http://parkplanning.nps.gov/draftEECA>. NPS will issue a public notice to alert interested parties and the general public of the review process.

ECM and NPS would like to know your level of interest in this project at DEPO. If you have any questions or concerns or if you would like to be individually notified when the Draft EE/CA is available, please notify me at htrejo@ecostmanage.com or (510) 964-4399.

Best regards,

Holly Anne Trejo, P.G.
Project Manager

Enclosures:

Figure 1: Site Location Map

Figure 2: Site Features

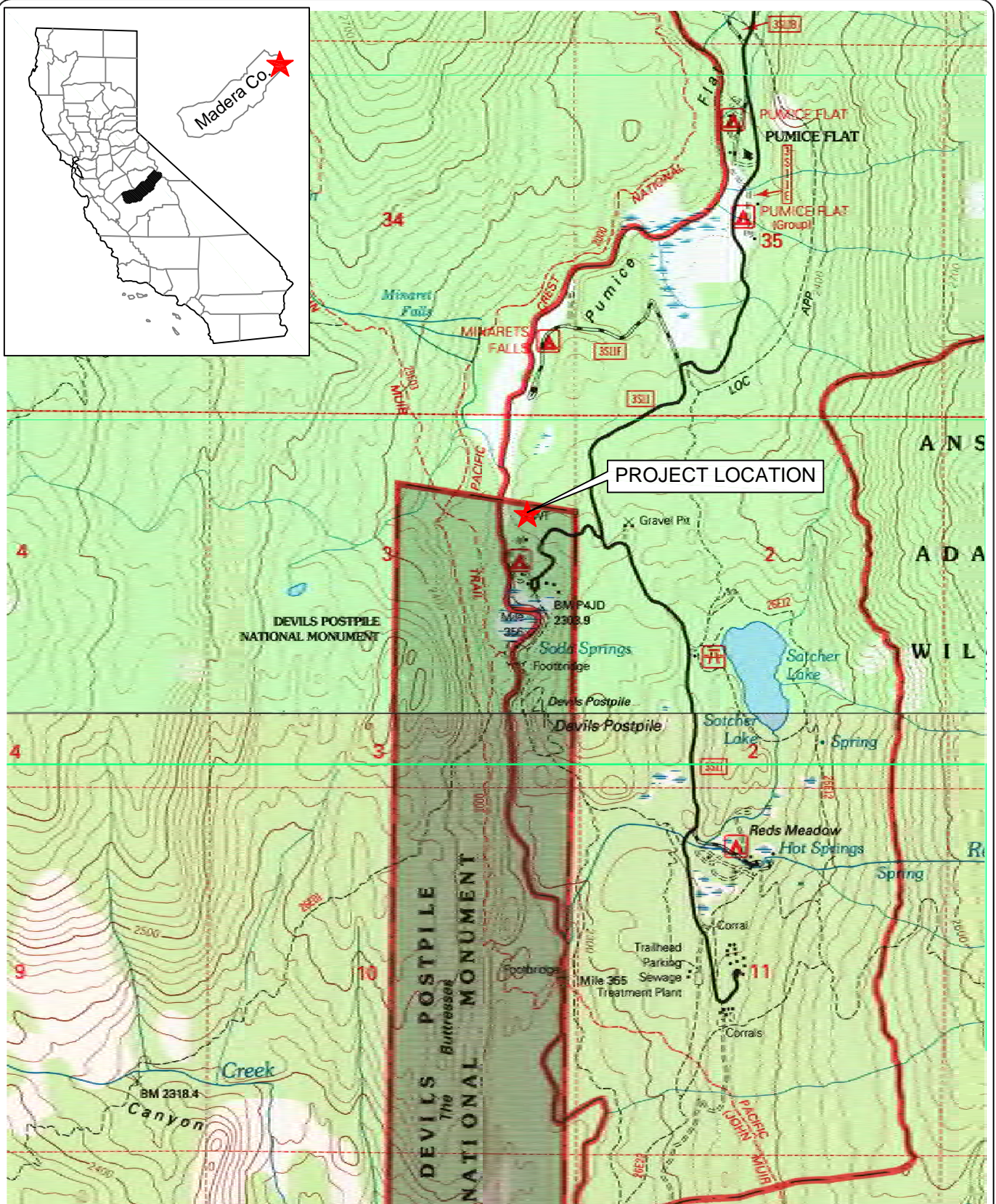
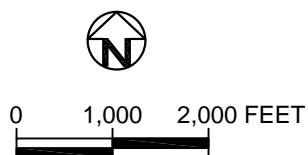


FIGURE 1

SITE VICINITY MAP

Devils Postpile National Monument
Madera County, California

ENVIRONMENTAL COST MANAGEMENT, INC.
Managing Cost and Liability
3525 Hyland Avenue, Suite 200 • Costa Mesa, CA 92626
Tel: (714) 662-2759 • Fax: (714) 662-2758



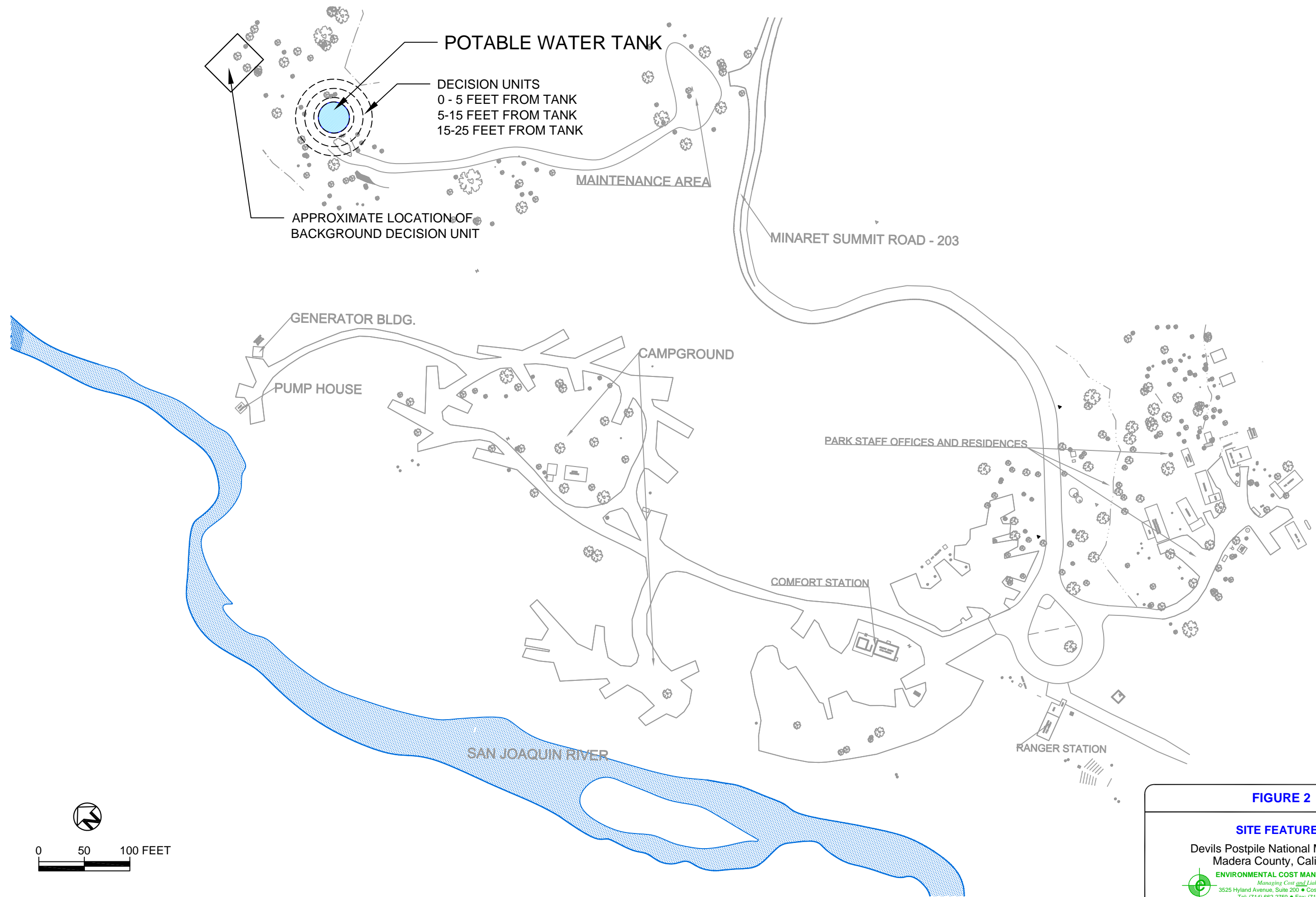


FIGURE 2

SITE FEATURES

Devils Postpile National Monument
Madera County, California

ENVIRONMENTAL COST MANAGEMENT, INC.
Managing Cost and Liability
3525 Hyland Avenue, Suite 200 • Costa Mesa, CA 92626
Tel: (714) 662-2759 • Fax: (714) 662-2758