

GOVERNMENT OF THE DISTRICT OF COLUMBIA
STATE HISTORIC PRESERVATION OFFICER



May 22, 2015

Ms. Karen L. Cucurullo
Acting Superintendent
National Mall and Memorial Parks
National Park Service
900 Ohio Drive, SW
Washington, DC 20242-2000

RE: Final Determination of Effect for the Eisenhower Memorial per Stipulation 11 of the 2012
Memorandum of Agreement

Dear Ms. Cucurullo:

Thank you for your recent letters dated April 29th and May 8th, 2015 which were provided to continue Section 106 consultation on the Eisenhower Memorial Project. We have reviewed this most recent correspondence and are writing to provide further comments regarding effects on historic properties in accordance with the 2012 Memorandum of Agreement among the National Park Service, National Capital Planning Commission, the District of Columbia State Historic Preservation Officer, the Advisory Council on Historic Preservation and the Eisenhower Memorial Commission regarding the establishment of the Eisenhower Memorial (MOA).

The first of the two NPS letters responded specifically to the suggestion made by the National Civic Art Society, and concurred in by our office, that eliminating the easternmost and westernmost bays of the tapestry (but retaining the columns) could further minimize adverse effects. We regret that the requested illustrations were not produced so that others might better understand the implications of such a revision, but we appreciate that the NPS did review past studies and give “deliberate consideration” before coming to the conclusion that suggested change would do “unacceptable harm to the essential concept of the memorial.”

We continue to believe, and has NPS acknowledged that eliminating the outermost bays of the tapestry would likely result in an additional minimization of adverse effects, but we also recognize the critical importance of the aesthetic aspects of the memorial design. So while it may be technically possible to further minimize the adverse effects of the tapestry and other components of the memorial, we consider the adverse effects to have been minimized sufficiently to achieve the goals of the Section 106 process as defined at 36 CFR 800.1(a), and we do not consider any further studies of the tapestry to be necessary.

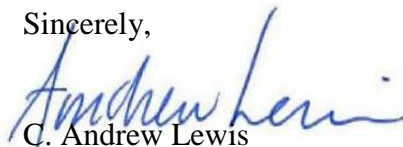
The second of the two NPS letters was provided to comply with the requirements of Stipulations 10 and 11 of the MOA. In that letter, the NPS briefly summarizes the evolution of the memorial design since Section 106 consultation was initiated – including the aforementioned study of eliminating two tapestry bays – and documents its determination that the final design will not result in any “new adverse effects that have not already been resolved and/or the intensification of known adverse effect to historic properties.”

After carefully evaluating the illustrations that were forwarded along with the May 8th letter to document the proposed final Eisenhower Memorial design (attached for reference), and in consideration of the fact that the design has clearly been revised to avoid and minimize adverse effects in response to Section 106 consultation, we also concur with the NPS determination that no new or intensified adverse effects on historic properties will occur as a result of the final design.

In addition to the steps that have been taken to avoid and minimize adverse effects, we also note that several measures are soon to be implemented in order to mitigate the adverse effects. As soon as additional information becomes available, we would appreciate updates from the NPS, NCPC and GSA regarding the stipulations of the MOA that address the "E-Memorial" (Stipulation 4); On-Site Interpretation (Stipulation 5); HALS Documentation (Stipulation 6); NR and DC Landmark nominations for the LBJ Building (Stipulation 7); the L'Enfant NHL Nomination (Stipulation 8); and the SW Federal Center Heritage Trail Study (Stipulation 9).

In the meantime, we very much appreciate the cooperation of the NPS, the other Signatories to the MOA and all consulting parties in concluding the Section 106 consultation process for this undertaking and we look forward to working with all parties to complete the agreed upon mitigation measures. If you should have any questions or comments regarding these matters, please contact me at andrew.lewis@dc.gov or 202-442-8841. Otherwise, thank you again for providing opportunities to review and comment on the design of this important presidential memorial.

Sincerely,

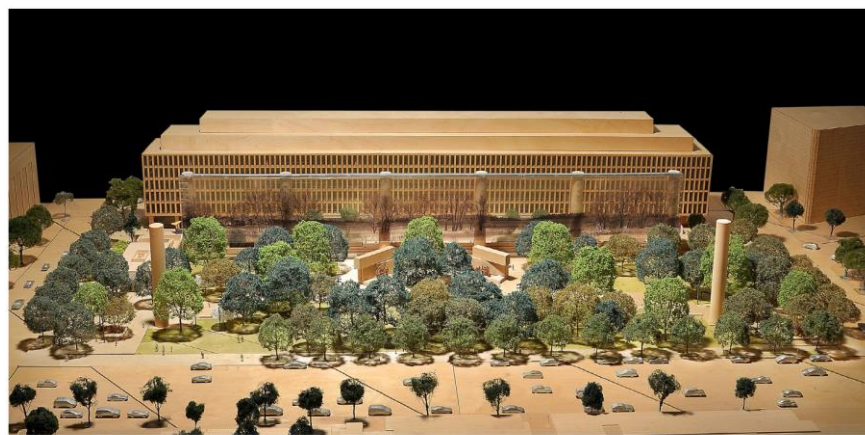


C. Andrew Lewis
Senior Historic Preservation Specialist
DC State Historic Preservation Office

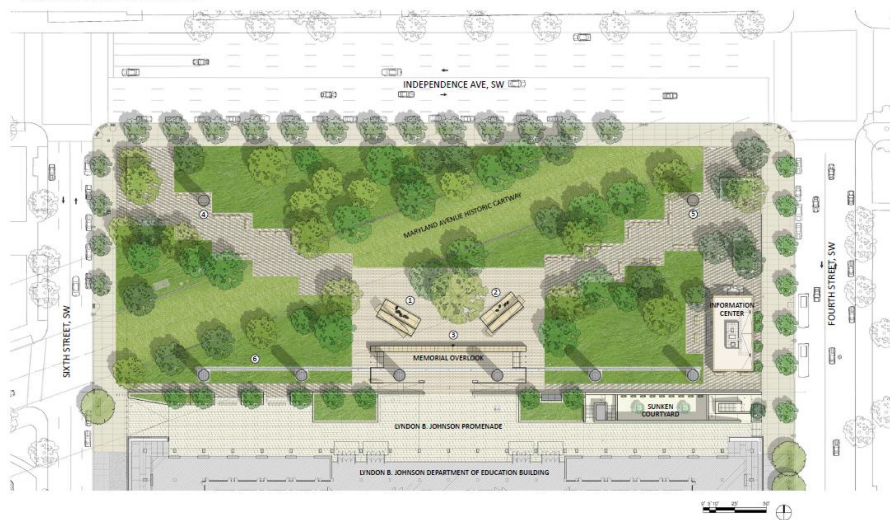
08-175

cc: Beth Savage, GSA
David Levy, NCPC
Justin Shubow, NCAS

FINAL EISENHOWER MEMORIAL DESIGN



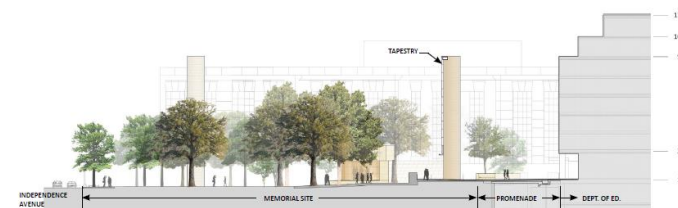
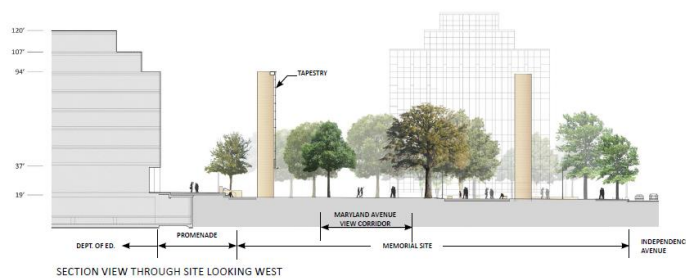
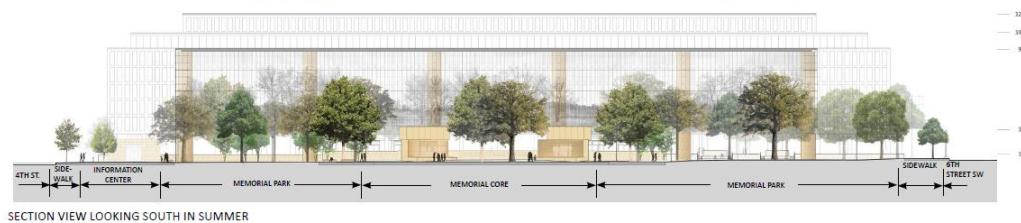
APRIL 2015 DESIGN: AERIAL VIEW

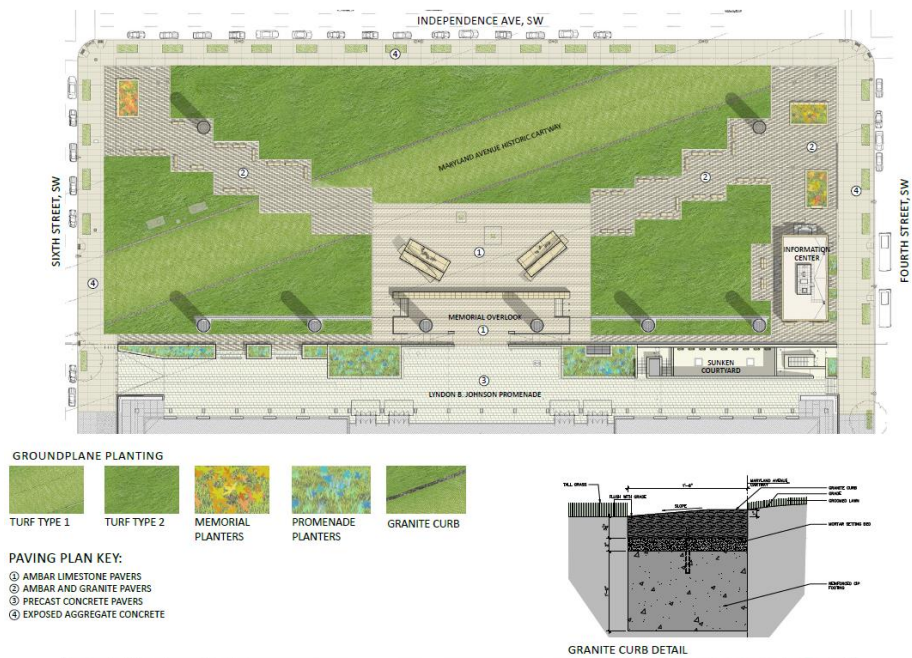


- ① GENERAL EISENHOWER MEMORIAL ELEMENT
- ② PRESIDENT EISENHOWER MEMORIAL ELEMENT
- ③ YOUNG EISENHOWER STATUE
- ④ WEST COLUMN
- ⑤ EAST COLUMN
- ⑥ SOUTH TAPESTRY



APRIL 2015 DESIGN: VIEW ALONG MARYLAND AVENUE TOWARDS CAPITOL





APRIL 2015 DESIGN: COMMEMORATIVE ART NIGHTTIME LIGHTING



APRIL 2015 DESIGN: VIEW ALONG MARYLAND AVENUE TOWARDS CAPITOL