



Proposal for 16" Natural Gas Pipeline across Two Units in Big Thicket National Preserve, Tyler and Hardin Counties, Texas

Project Scoping

June 5, 2015

Dear Friend of Big Thicket National Preserve:

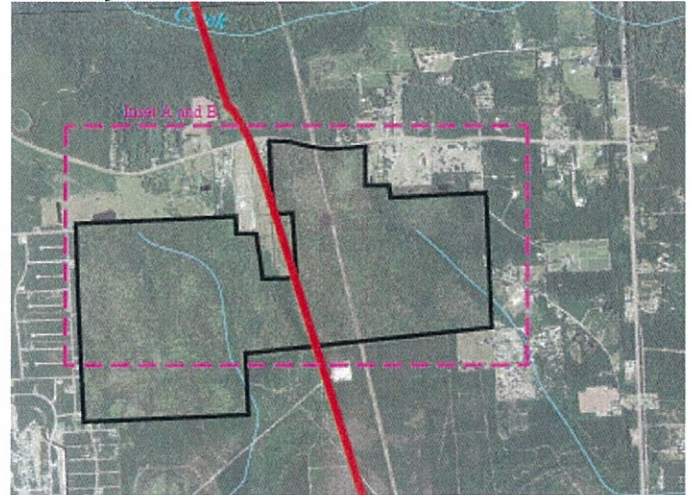
The National Park Service (NPS) is reviewing a proposal from Enterprise Products Operating Company LLC to replace a 6-inch natural gas pipeline with a 16-inch pipeline across the Hickory Creek and Turkey Creek Units within a right-of-way that existed prior to the establishment of Big Thicket National Preserve. Enterprise proposes to use hydraulic directional drilling (HDD), with entry and exit points located outside the units; so there would be no construction activities in the units. The pipeline could operate for 50 years or longer, requiring access for routine maintenance activities across the units.

The NPS has preliminarily determined that this project may qualify for a Categorical Exclusion under the National Environmental Policy Act of 1969. The NPS encourages public participation throughout the NEPA process during which the public has two opportunities to comment on this project; once during initial project scoping and again following release of the Categorical Exclusion (CE). We are currently in the scoping phase of this project, and I invite you to voice your ideas, comments, or concerns about this effort.

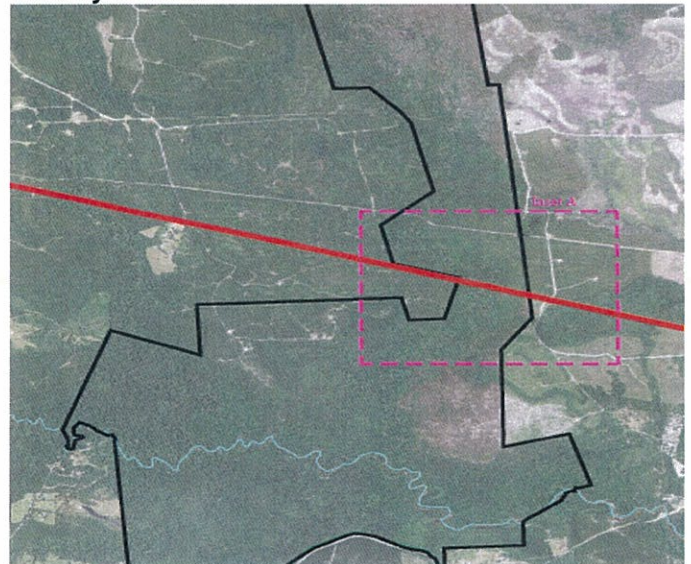
Sincerely,

Wayne Prokopetz, Superintendent

Hickory Creek Unit



Turkey Creek Unit



Overview of the Process

Project milestones include:

- **Public scoping (June 5, 2015)***
- Public review of the CE*
- Analysis of public comment
- Preparation of decision documents
- Announcement of decision on Enterprise's Proposal

Bold indicates where we are now;

* indicates opportunities for public comment

Resources and Concerns

The CEF will analyze potential impacts to:

- Water Resources ● Floodplains and Wetlands ● Fish and Wildlife ● Species of Management Concern ● Geology and Soils ● Vegetation ● Cultural Resources ● Air Quality ● Soundscapes ● Socioeconomics ● Visitor Use and Experience ● Catastrophic Incidents ● Park Operations ● Adjacent Lands ● Lightscapes

Ideas to Consider

Following are a few ideas to keep in mind as you develop your comments on this proposal:

1. Do you have any ideas to share about the resources/concerns listed in the scoping brochure, or are there any other issues/concerns about the project that you think we should consider?
2. Do you have other comments and suggestions for us to consider in the CE?

How Do I Comment on This Project?

Please submit your comments online at the NPS Planning, Environment, and Public Comment website:

<http://parkplanning.nps.gov/bith>

Please provide all comments by June 19, 2015. If you wish to be added to or removed from the Preserve's mailing list for future correspondence, please indicate that in your response.

If you are unable to submit comments electronically through this website, then you may also submit written comments to the address below, Attention: Ryan Desliu. You may also hand-deliver written comments to the visitor center at Big Thicket National Preserve.

Big Thicket National Preserve
6044 FM 420
Kountze, Texas 77625

National Park Service
U.S. Department of the Interior

