

A G E N D A

June 3, 2015, 10:00 a.m.-12:00 p.m., National Mall and Memorial Parks Headquarters

Section 106 Consulting Parties Meeting for the Constitution Gardens Rehabilitation

Welcome and Introductions

Presentation

- Purpose and Need
- Brief overview of site history and contributing features
- Alternatives
- Assessment of Effects

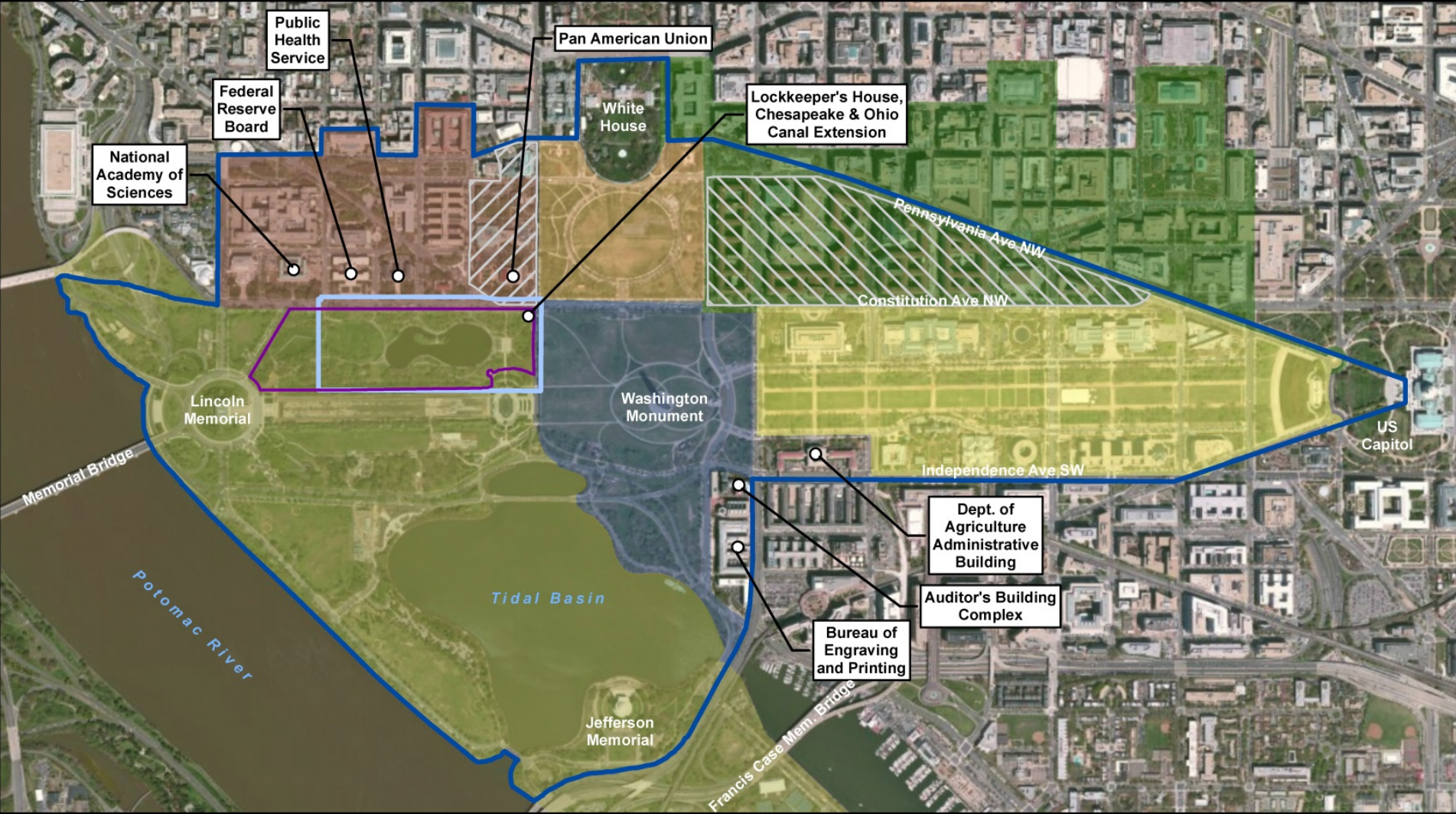
Next Steps

Rehabilitation of Constitution Gardens

National Mall and Memorial Parks

Washington, DC

National Park Service
U.S. Department of the Interior



Legend

○ Individually Eligible Buildings of Interest

Primary APE

Secondary APE

Constitution Gardens Cultural Landscape

Pennsylvania Ave National Historic Site

Northwest Rectangle HD

National Mall HD

East/West Potomac Parks HD

Federal Triangle HD

Seventeenth Street HD

President's Park South

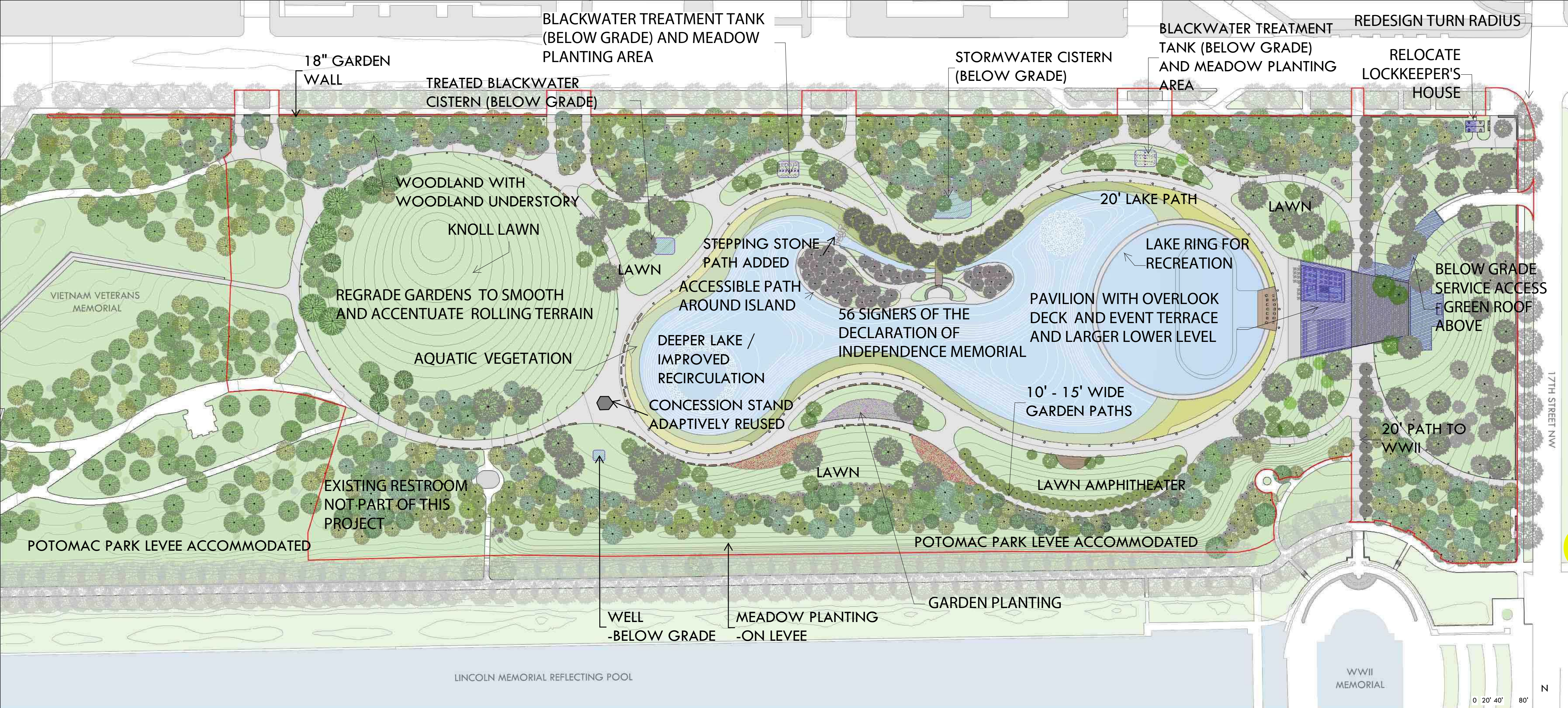
Washington Monument & Grounds



Sources: ESRI; DC OCTO
Coordinate System:
NAD 1983 State Plane Maryland Feet

0 500 1,000 2,000 Feet





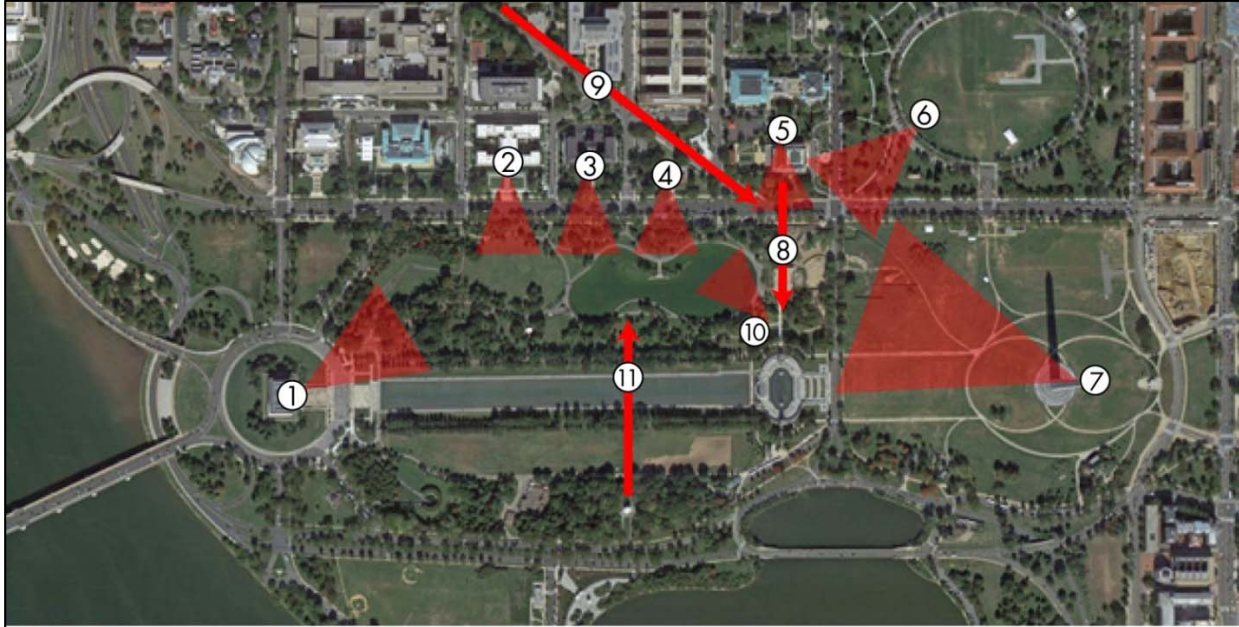
REHABILITATE CONSTITUTION GARDENS
 FIGURE 2.2 - PREFERRED ALTERNATIVE - REGENERATIVE GARDEN



REHABILITATE CONSTITUTION GARDENS
FIGURE 2.3 - ALTERNATIVE 1 - SUSTAINABLE GARDEN

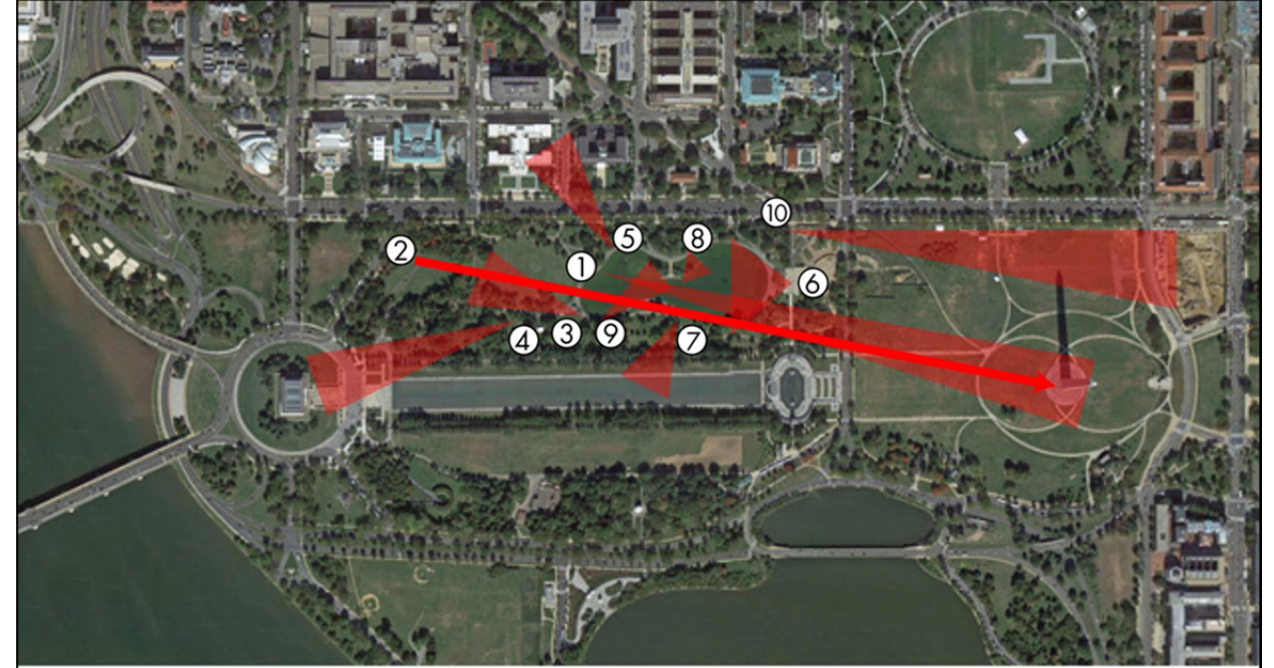


REHABILITATE CONSTITUTION GARDENS
FIGURE 2.4 ALTERNATIVE 2 - SOCIAL GARDEN



LEGEND

- | | |
|---|--|
| 1. Vista from Lincoln Memorial to park | 6. View to Lockkeeper's House |
| 2. View from the Federal Register Bank Headquarters | 7. Vista from Washington Monument |
| 3. View from the Department of Interior South | 8. View to World War II Memorial |
| 4. View from the Pan American Annex | 9. Vista from Virginia Avenue, NW |
| 5. View from the Organization of American States | 10. Views from Circle of Remembrance |
| | 11. Views from District of Columbia War Memorial |



LEGEND

- | | |
|--|--|
| 1. Vistas from park to Washington Monument | 6. Views from the Overlook Terrace |
| 2. Vista from Vietnam Veterans Memorial | 7. Views to Reflecting Pool Area |
| 3. Vistas to the Vietnam Veterans Memorial | 8. Internal views to the Lake |
| 4. Vistas to the Lincoln Memorial | 9. Internal views to the island |
| 5. Views to buildings north of Constitution Avenue | 10. Views from Lockkeeper's House to the National Museum of African American History and Culture |

Table 1. Effects Matrix

Resource	Features	No Action Alternative	Preferred Alternative: Regenerative Garden	Alternative 1: Ecological Garden	Alternative 2: Social Garden
CULTURAL LANDSCAPES					
Constitution Gardens Cultural Landscape	Spatial Organization	No effect	Street trees would remain and the garden with its rolling terrain would be separated from the street by a 18-inch retaining wall. Border of lindens (south of the walk) could be removed since trees are not in good or fair condition. The open central area of the gardens would be retained. These changes would have <i>no adverse effect</i> on the spatial organization of the park.	Street trees would remain and the garden with its rolling terrain would be separated from the street by a 30-inch retaining wall. Border of lindens (south of the walk) could be removed since trees are not in good or fair condition. The open central area of the gardens would be retained. These changes would have <i>no adverse effect</i> on the spatial organization of the park.	Same as preferred alternative
	Topography	No effect	The gently rolling topography would be retained to maintain a smooth rolling surface but the height would be increased by 2-4 feet The Plateau at Overlook Terrace would be removed and replaced with a pavilion. Overlook function would be retained with pavilion The Western Knoll and Northern Berm would be retained in place but the height increased by 4-6 feet. The entrances within the Northern Berm would be widened. The changes to the height of the topography, removal of Overlook Plateau and widening of the entrances along the North Berm would have an <i>adverse effect</i> on the characteristics of the topography that contribute to the eligibility of the cultural landscape.	The gentle, rolling topography would be altered by amplifying the height and slopes with 8-10 feet of soil. Same as preferred alternative The Western Knoll would be removed and replaced with a number of amplified hills. The height of the Northern Berm would be increased 8-10 feet and the entrance widened. The changes to the height and gentle rolling nature of the park would have an <i>adverse effect</i> on characteristics of the topography that contribute to the eligibility of the cultural landscape. Additionally, the removal of Overlook Plateau and widening of the entrances in the North Berm would result in an <i>adverse effect</i> .	The gently rolling topography would be retained to maintain a smooth rolling surface but the height would be increased by 4-6 feet. Same as preferred alternative Same as preferred alternative The changes to the height of the topography, removal of Overlook Plateau and widening of the entrances along the North Berm would have an <i>adverse effect</i> on the characteristics of the topography that contribute to the eligibility of the cultural landscape.
	Land Use	No effect	There would be little change to the overall land use at the park with the exception of the Citizenship Ceremony. This is currently conducted at Overlook Terrace, which would be replaced with the pavilion. This would require a change in the setting but is anticipated to have <i>no adverse effect</i> .	Same as preferred alternative	Same as preferred alternative

Resource	Features	No Action Alternative	Preferred Alternative: Regenerative Garden	Alternative 1: Ecological Garden	Alternative 2: Social Garden
Constitution Gardens Cultural Landscape	Circulation	No effect	There would be little change in the overall circulation within the garden. Existing pathways would be streamlined and widened from 14 to 20 feet. The stairs that parallel the Overlook Terrace would be revised as part of the plan for the new pavilion. Removal of the Overlook Terrace would have an <i>adverse effect</i> on the cultural landscape.	Same as preferred alternative	Same as preferred alternative
	Vegetation	No effect	Wooded park with mixed mature canopy of shade trees, saving hundreds of trees that are in good to fair condition; removing trees in poor condition and fewer trees in fair condition. This alternative would be close to or replicating current massing and canopy. NPS would continue to prune and remove trees and trees would be analyzed on a case by case basis during design. Minimal mature tree relocation. Would increase number of trees in the canopy as a result of replacement by younger trees that would adapt more quickly. Current lawns would be become: 64% lawn, 12% meadow, and 24% woodland understory.	Wooded park, but primarily mixed canopy of young trees, not providing as much shade and altering the massing and canopy. Most mature trees would be removed or relocated to improve soils. Trees would replace or exceed current number. Primarily Meadow and Woodland Understory planting approximately 24” maximum height. The meadows would be mowed to function as lawns.	Wooded park with mixed mature canopy of shade trees, saving hundreds of trees that are in good to fair condition and removing trees in poor and some trees in fair condition, somewhat altering the massing and canopy. Remove or relocate mature trees affected by construction. Replace trees to approximate existing number. Understory vegetation will remain mowed lawn with some shrub and bulb planting.
			The honey locust trees at Overlook Terrace and around the refreshment terrace would be removed and the pavilion constructed in their place.	Same as preferred alternative	Same as preferred alternative
			Magnolias at the 56 Signers Memorial would be preserved in place where possible. Remnant plantings would be removed	Same as preferred alternative	Same as preferred alternative
Street trees would remain in place except to allow for service entrance			Same as preferred alternative	Same as preferred alternative	
			The removal of several of the contributing vegetation features would have an <i>adverse effect</i> on the cultural landscape.	The removal of these characteristics would have an <i>adverse effect</i> on the cultural landscape.	The removal of several of the contributing vegetation features would have an <i>adverse effect</i> on the cultural landscape.
Constitution Gardens Cultural Landscape	Buildings and Structures	Continued deterioration of the Lockkeeper's House in its current location would result in an <i>adverse effect</i> on the cultural landscape.	The Lockkeeper’s House would be relocated 30-40 feet to the southwest and rehabilitated.	Same as preferred alternative	The Lockkeeper’s House would be relocated 500 feet to the southwest and rehabilitated.
			The refreshment kiosk would be retained and rehabilitated for use.	The refreshment kiosk would be removed.	Same as preferred alternative
			Overlook Terrace would be removed and replaced with a pavilion.	Same as preferred alternative	Same as preferred alternative

Resource	Features	No Action Alternative	Preferred Alternative: Regenerative Garden	Alternative 1: Ecological Garden	Alternative 2: Social Garden
Constitution Gardens Cultural Landscape			<p>Constitution Gardens Island and the 56 Signers Memorial would be rehabilitated but their overall shape and plan would be retained.</p> <p>The relocation of the Lockkeeper’s House and removal of Overlook Terrace would have an <i>adverse effect</i> on the cultural landscape.</p>	<p>Same as preferred alternative</p> <p>The relocation and/or removal of these structures would have an <i>adverse effect</i> on the cultural landscape.</p>	<p>Same as preferred alternative</p> <p>The relocation of the Lockkeeper’s House and removal of Overlook Terrace would have an <i>adverse effect</i> on the cultural landscape.</p>
	Views and Vistas	No effect	<p>Changes to the topography and vegetation would negatively affect the views and vistas that contribute to the cultural landscape. In particular, the vistas from the park to the Washington Monument and buildings along the north of Constitution Ave. would be altered by the raised topography and in the case of the Washington Monument, the inclusion of the pavilion. Additionally, views within the park, such as the view from Overlook Terrace, would be changed by the removal of the feature, vantage points from the new pavilion and the inclusion of a new feature, the ring, within the lake.</p> <p>These changes to the views and vistas would have an <i>adverse effect</i> on the cultural landscape.</p>	<p>Changes to views and vistas would be similar to the preferred alternative, but increased because of the amplified topographic changes under this alternative.</p> <p>These changes to the views would have an <i>adverse effect</i> on the cultural landscape.</p>	<p>Changes to views and vistas would be similar to the preferred alternative, but increased because of the amplified topographic changes under this alternative (but less than in alternative 1).</p> <p>These changes to the views would have an <i>adverse effect</i> on the cultural landscape.</p>
	Constructed Water Features	No effect	<p>The shape of the island would be retained but a ring would be added to the east end. Lake would be excavated to 12 feet in depth and would have a gravel bottom with a liner. Aquatic plants would be added along the shoreline.</p> <p>The addition of the ring to the lake would have an <i>adverse effect</i> on a contributing feature of the cultural landscape.</p>	<p>The shape of the island would be retained but a ring would be added to the east end. Lake would be excavated to 12 feet in depth and would have a gravel bottom with a liner. Aquatic plants on 15' wide submerged shelf around entire lake edge. Wetland plantings between lake edge and island.</p> <p>The addition of the ring to the lake would have an <i>adverse effect</i> on a contributing feature of the cultural landscape.</p>	<p>The shape of the island would be retained but a ring would be added to the west end. Lake would be excavated to 2-12 feet in depth and would have a gravel bottom with a liner. No aquatic plants would be added.</p> <p>The addition of the ring to the lake would have an <i>adverse effect</i> on a contributing feature of the cultural landscape.</p>
	Small Scale Features	No effect	<p>The majority of small scale features, such as light poles and benches, would be replaced in kind.</p> <p>The Washington City Canal Memorial Stone, Plaque, and mounting block would be relocated with the Lockkeeper’s House.</p> <p>The relocation of the stone and plaque would have <i>no adverse effect</i>.</p>	<p>Same as preferred alternative</p>	<p>Same as preferred alternative</p>

Resource	Features	No Action Alternative	Preferred Alternative: Regenerative Garden	Alternative 1: Ecological Garden	Alternative 2: Social Garden
BUILDINGS AND HISTORIC DISTRICTS					
L'Enfant Plan Historic District		No effect	This alternative would not remove the park setting of Constitution Gardens, as specified for the area in the McMillan Plan. These actions are anticipated to have <i>no adverse effect</i> on the historic district.	Same as preferred alternative	Same as preferred alternative
East West Potomac Parks Historic District		No effect	The raised topography could impact views of the park from the East West Potomac Park Historic District. Additionally, two contributing features to the district would be altered: the 56 Signers Memorial and the Lockkeeper's House. The effects to the Lockkeeper's House are discussed below. The 56 Signers Memorial would be rehabilitated in-kind. These actions are anticipated to have <i>no adverse effect</i> on the historic district.	Same as preferred alternative	Same as preferred alternative
Lockkeeper's House		Continued deterioration of the Lockkeeper's House in its current location would result in an adverse effect on the cultural landscape.	The Lockkeeper's House would be moved 30-40 feet to the southeast, altering its integrity of location. The house would be rehabilitated in its new location. The relocation would have an <i>adverse effect</i> on the historic structure.	Same as preferred alternative	The Lockkeeper's House would be moved 500 feet to the southwest altering its integrity of location. The house would be rehabilitated in its new location. The relocation would have an <i>adverse effect</i> on the historic structure.
Northwest Rectangle Historic District		No effect	Road work related to stormwater management enhancements could directly affect the Northwest Rectangle Historic District if work falls within its boundaries. Visual effects of the stormwater enhancements to the historic district would be short term, for the duration of construction on Constitution Avenue to tap into existing stormwater lines. The enhancements would not affect the integrity of the district and would have <i>no adverse effect</i> on the Northwest Rectangle Historic District.	Same as preferred alternative	Same as preferred alternative

Resource	Features	No Action Alternative	Preferred Alternative: Regenerative Garden	Alternative 1: Ecological Garden	Alternative 2: Social Garden
Seventeenth Street Historic District		No effect	Road work related to stormwater management enhancements could directly affect the Seventeenth Street Historic District if work falls within its boundaries. Effects of the stormwater enhancements to the historic district would be short term, for the duration of construction on Constitution Avenue to tap into existing stormwater lines. The enhancements would not affect the integrity of the district and would have <i>no adverse effect</i> on the Seventeenth Street Historic District.	Same as preferred alternative	Same as preferred alternative
The Washington Monument Grounds		No effect	Construction activities along Constitution Avenue and Seventeenth Street could have short-term effects on the resource for the duration of construction. Changes within the garden such as resulting from removal of vegetation and addition of the pavilion would alter views from the Washington Monument grounds, but would no impact the integrity of the resource. These actions are expected to have <i>no adverse effect</i> on the resource.	Same as preferred alternative	Same as preferred alternative
National Mall Historic District		No effect	Construction activities along Constitution Avenue and Seventeenth Street could have short-term effects on the resource for the duration of construction. Changes within the garden such as resulting from removal of vegetation and addition of the pavilion would alter views from President's Park, but would not impact the integrity of the resource. These actions are expected to have no adverse effect on the resource.	Same as preferred alternative	Same as preferred alternative
President’s Park South		No effect	Construction activities along Constitution Avenue and Seventeenth Street could have short-term effects on the resource for the duration of construction. Changes within the garden such as resulting from removal of vegetation and addition of the pavilion would alter views from President's Park, but would not impact the integrity of the resource. These actions are expected to have <i>no adverse effect</i> on the resource.	Same as preferred alternative	Same as preferred alternative
The White House		No effect	No effect	Same as preferred alternative	Same as preferred alternative

Resource	Features	No Action Alternative	Preferred Alternative: Regenerative Garden	Alternative 1: Ecological Garden	Alternative 2: Social Garden
Federal Triangle and Pennsylvania Avenue National Historic Site		No effect	No effect	Same as preferred alternative	Same as preferred alternative
Auditor's Building Complex		No effect	No effect	Same as preferred alternative	Same as preferred alternative
Department of Agriculture (Administration Building)		No effect	Construction activities along Constitution Avenue and Seventeenth Street could have short-term effects on the resource for the duration of construction. Changes within the garden such as those resulting from removal of vegetation and addition of the pavilion would alter views from the resource, but would not impact the integrity of the resource. These actions are expected to have <i>no adverse effect</i> on the resource.	Same as preferred alternative	Same as preferred alternative
Bureau of Engraving and Printing		No effect	No effect	Same as preferred alternative	Same as preferred alternative
Federal Reserve Board Building		No effect	Construction activities along Constitution Avenue and Seventeenth Street could have short-term effects on the resource for the duration of construction. Changes within the garden such as resulting from removal of vegetation and addition of the pavilion would alter views from the resource, but would not impact the integrity of the resource. These actions are expected to have <i>no adverse effect</i> on the resource.	Same as preferred alternative	Same as preferred alternative
Public Health Service (Department of Interior South Building)		No effect	Construction activities along Constitution Avenue and Seventeenth Street could have short-term effects on the resource for the duration of construction. Changes within the garden such as resulting from removal of vegetation and addition of the pavilion would alter views from the resource, but would not impact the integrity of the resource. These actions are expected to have <i>no adverse effect</i> on the resource.	Same as preferred alternative	Same as preferred alternative

Resource	Features	No Action Alternative	Preferred Alternative: Regenerative Garden	Alternative 1: Ecological Garden	Alternative 2: Social Garden
National Academy of Sciences Building		No effect	Construction activities along Constitution Avenue and Seventeenth Street could have short-term effects on the resource for the duration of construction. Changes within the garden such as resulting from removal of vegetation and addition of the pavilion would alter views from the resource, but would not impact the integrity of the resource. These actions are expected to have <i>no adverse effect</i> on the resource.	Same as preferred alternative	Same as preferred alternative
The Pan American Union (Organization of American States) Building		No effect	Construction activities along Constitution Avenue and Seventeenth Street could have short-term effects on the resource for the duration of construction. Changes within the garden such as resulting from removal of vegetation and addition of the pavilion would alter views from the resource, but would not impact the integrity of the resource. These actions are expected to have <i>no adverse effect</i> on the resource.	Same as preferred alternative	Same as preferred alternative
ARCHEOLOGICAL RESOURCES					
Lockkeeper’s House deposits (51NW233)		No effect	The topsoil would not be removed under this alternative but would be remediated in place. Underground utilities would be installed, including water cisterns. A basement would be added to the Lockkeeper's House. Project activities could result in an <i>adverse effect</i> on Site 51NW233.	The vast majority of the topsoil in Constitution Gardens would be removed. Underground utilities would be installed, including water cisterns. A basement would be added to the Lockkeeper's House. Project activities could have an <i>adverse effect</i> on Site 51NW233.	Same as preferred alternative
Washington City Canal (unevaluated)		No effect	The topsoil would not be removed under this alternative but would be remediated in place. Underground utilities would be installed, including water cisterns. A stormwater system would be constructed across Constitution Avenue and 17th Street. These actions could result in an <i>adverse effect</i> on the Washington City Canal.	The vast majority of topsoil would be removed, which would not extent to depths sufficient to impact the resource. A stormwater system would be constructed across Constitution Avenue and 17th Street, which would directly impact sections of the resource. These actions could result in an <i>adverse effect</i> on the Washington City Canal.	Same as preferred alternative
Lock B of the Washington City Canal (51NW235)		No effect	The topsoil would not be removed under this alternative but would be remediated in place. Underground utilities would be installed, including water cisterns. A stormwater system would be constructed across Constitution Avenue and 17th Street. There could be an <i>adverse effect</i> from construction of the stormwater system across Constitution Avenue.	Same as preferred alternative	Same as preferred alternative

Resource	Features	No Action Alternative	Preferred Alternative: Regenerative Garden	Alternative 1: Ecological Garden	Alternative 2: Social Garden
17th Street Wharf (unevaluated) (51NW232)		No effect	A stormwater system would be constructed across Constitution Avenue and 17th Street. The 17 th Street Wharf could be <i>adversely effected</i> by the construction of stormwater systems across 17 th Street.	Same as preferred alternative	Same as preferred alternative
WWI and WWII Temporary Buildings (unevaluated)		No effect	The foundations of the temporary buildings cover most of the primary APE and are buried by several feet of fill. Deep construction impacts, including the deepening of the lake, construction of a basement for the Lockkeeper's House, underground utility construction, and construction of a pavilion on the east end of the lake could all impact this resource. Project impacts would result in an <i>adverse effect</i> to the resource.	The foundations of the temporary buildings would be removed entirely, resulting in an <i>adverse effect</i> to the resource.	Same as preferred alternative
Outlet of the Tiber Creek sewer (unevaluated) (51NW234)		No effect	This resource is found under several feet of fill on the west side of 17th Street and underneath 17th Street. Stormwater and water system improvements may directly impact the resource, as may construction of a driveway leading to east concession stand area. Project impacts would result in an <i>adverse effect</i> to the resource.	The vast majority of the topsoil in Constitution Gardens would be removed. The soil removal would not extend to depths sufficient to impact the resource. The outlet of the Tiber Creek sewer could be <i>adversely affected</i> however by the construction of stormwater systems in the park and under 17th Street.	Same as alternative 1.
Washington Brewery (Coningham and Company) (not located)		No effect	The brewery remains have not been identified but likely are found underneath several feet of fill. Deep construction impacts, including construction of a basement for the Lockkeeper's House and underground utility construction could impact this resource. Project impacts would result in an <i>adverse effect</i> to the resource	Same as preferred alternative	Same as preferred alternative
Monument Grounds Site (51NW035) (unevaluated)		No effect	No effect	Same as preferred alternative	Same as preferred alternative
Commissioner's Wharf (H68) (not located)		No effect	No effect	Same as preferred alternative	Same as preferred alternative
Washington City Gas Works (H69) (not located)		No effect	No effect	Same as preferred alternative	Same as preferred alternative
Summary of Effects		Adverse effects	Adverse effects	Adverse effects	Adverse effects