

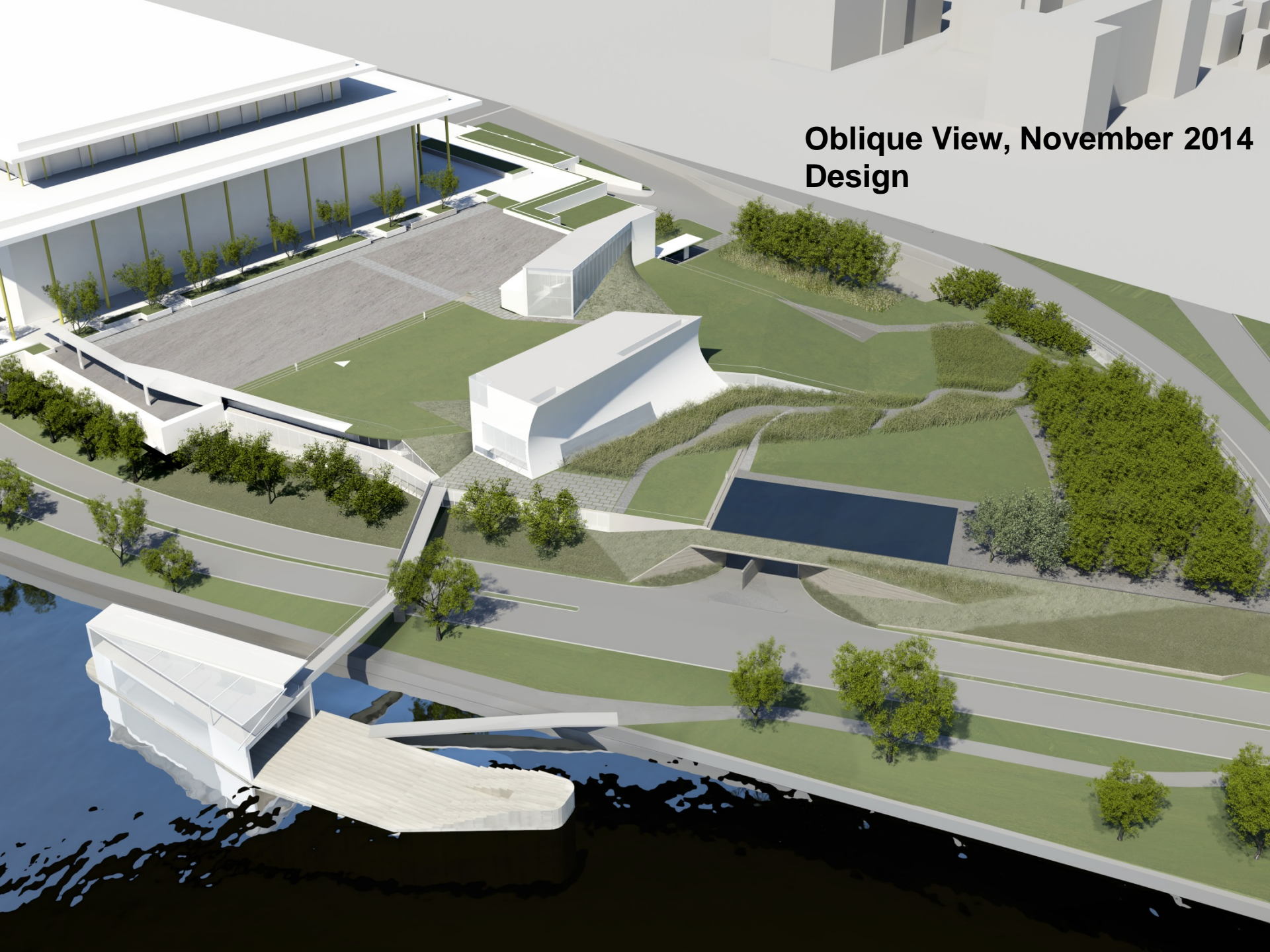


The John F. Kennedy Center for the Performing Arts Expansion Project

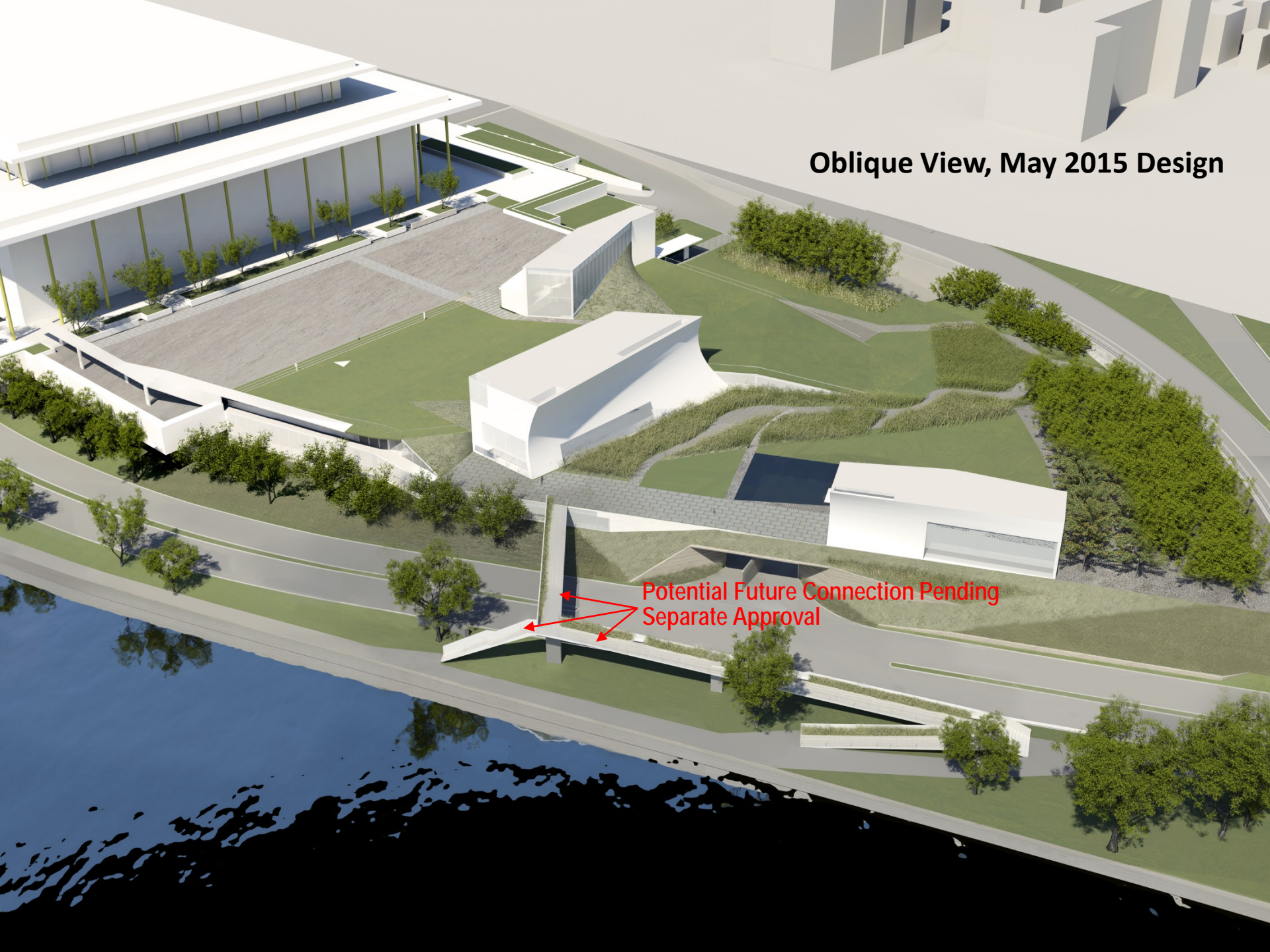
May 15, 2015

STEVEN HOLL ARCHITECTS

**Oblique View, November 2014
Design**



Oblique View, May 2015 Design



Potential Future Connection Pending
Separate Approval



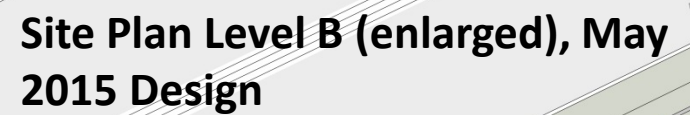
Site Plan – Terrace Level, May 2015 Design

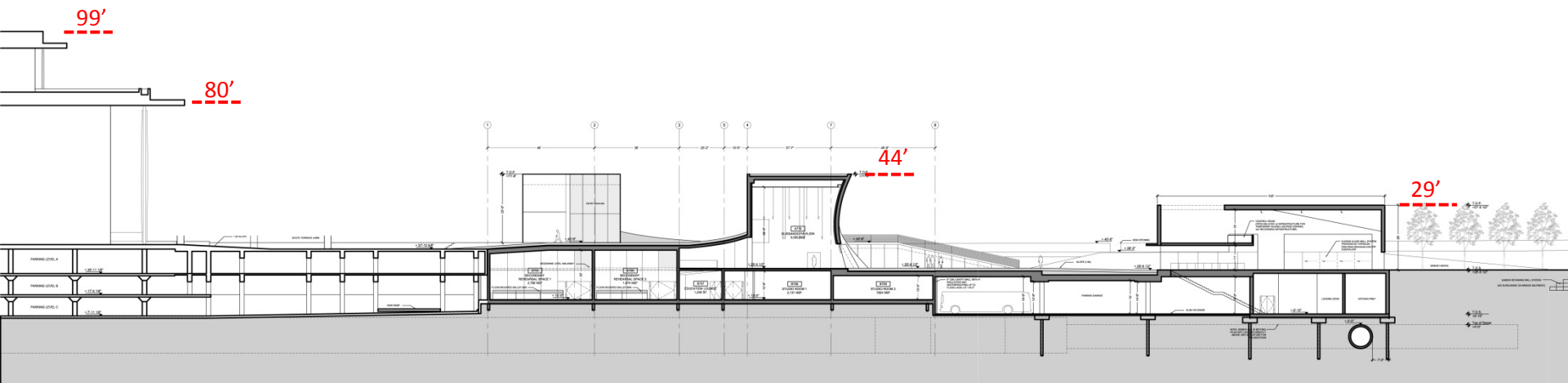


Site Plan Level A, May 2015 Design.



Site Plan Level B, May 2015 Design





**Section Parallel to Rock Creek and
Potomac Parkway, May 2015
Design**



**View looking northwest from the
Ginkgo Grove, May 2015 Design**

**View looking southeast from
inside new land-based pavilion,
May 2015 Design**





Potential Future Connection
Pending Separate Approval

View looking southeast from
Roosevelt Island, May 2015
Design



Potential Future Connection
Pending Separate Approval

View looking northeast, May 2015