

EISENHOWER MEMORIAL

SECTION 106 PRESENTATION
WASHINGTON D.C.
AUGUST 31st, 2011

TABLE OF CONTENTS

DESIGN UPDATE

1. MOCK-UPS AND SAMPLES

2. SCALE: COLUMN AND TAPESTRY SIZE

3. CURRENT DESIGN AND MODEL PHOTOS

- MARYLAND AVENUE VIEWSHED

4. VIEWSHEDS

- INDEPENDENCE AVENUE VIEWSHED
- OTHER VIEWSHED STUDIES

5. GROUNDPLANE

- LANDSCAPING
- MEMORIAL ELEMENTS AND CIRCULATION
- TREE ALLEE

6. THEMATICS

- THEMATIC SITE ADJACENCIES
- MEMORIAL ELEMENTS AND KEY QUOTES AND IMAGERY

MOCK-UPS AND SAMPLES



SUNLIGHT BEHIND



SUNLIGHT IN FRONT

TAPESTRY SAMPLE 1:
FULL SCALE MOCK-UP AT FABRICATION SITE



FRONT SIDE, SUNLIGHT BEHIND



BACK SIDE

TAPESTRY SAMPLE 2:
MOCK-UP AT STAGING SITE IN WASHINGTON D.C.



FRONT SIDE



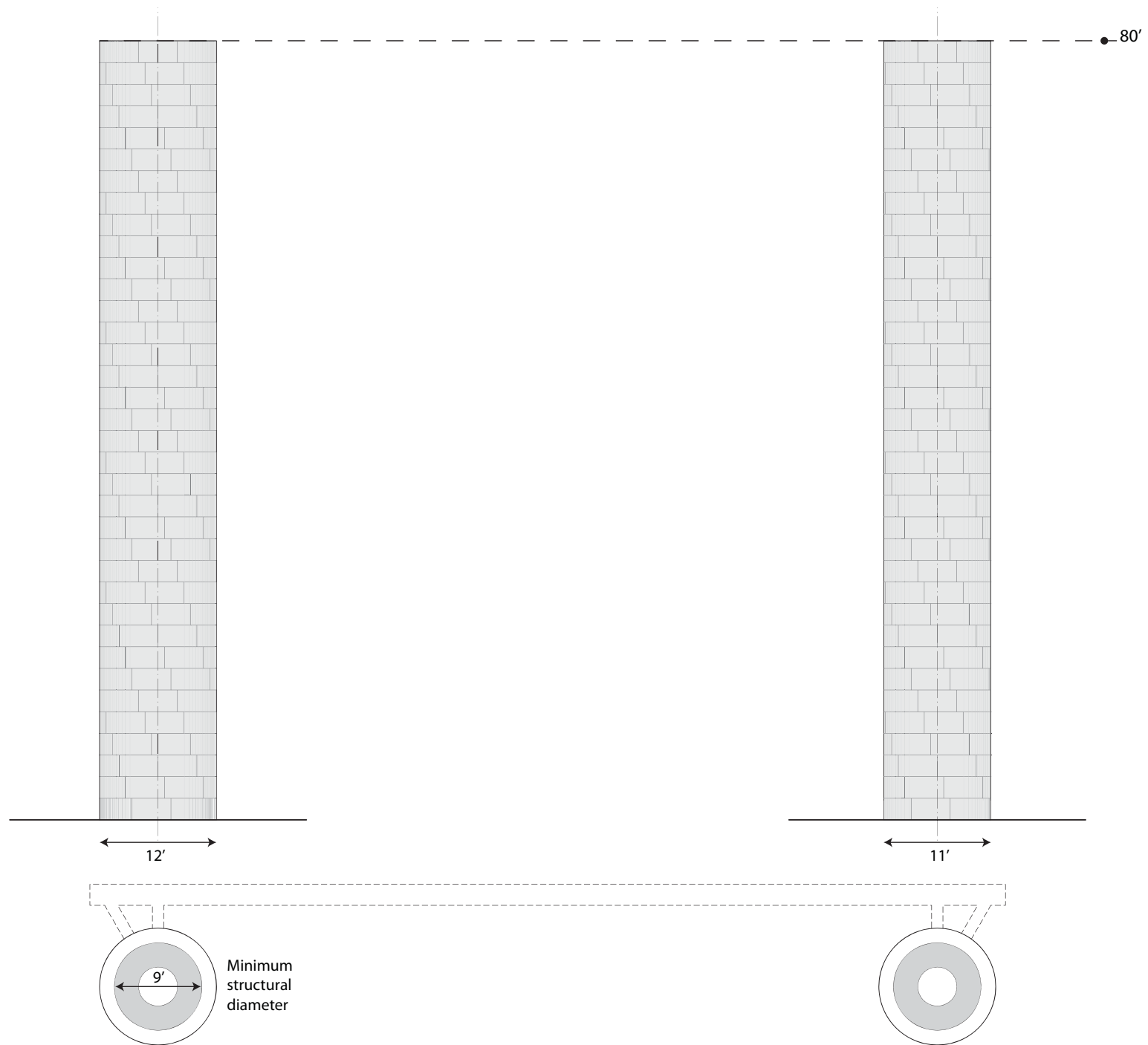
BACK SIDE

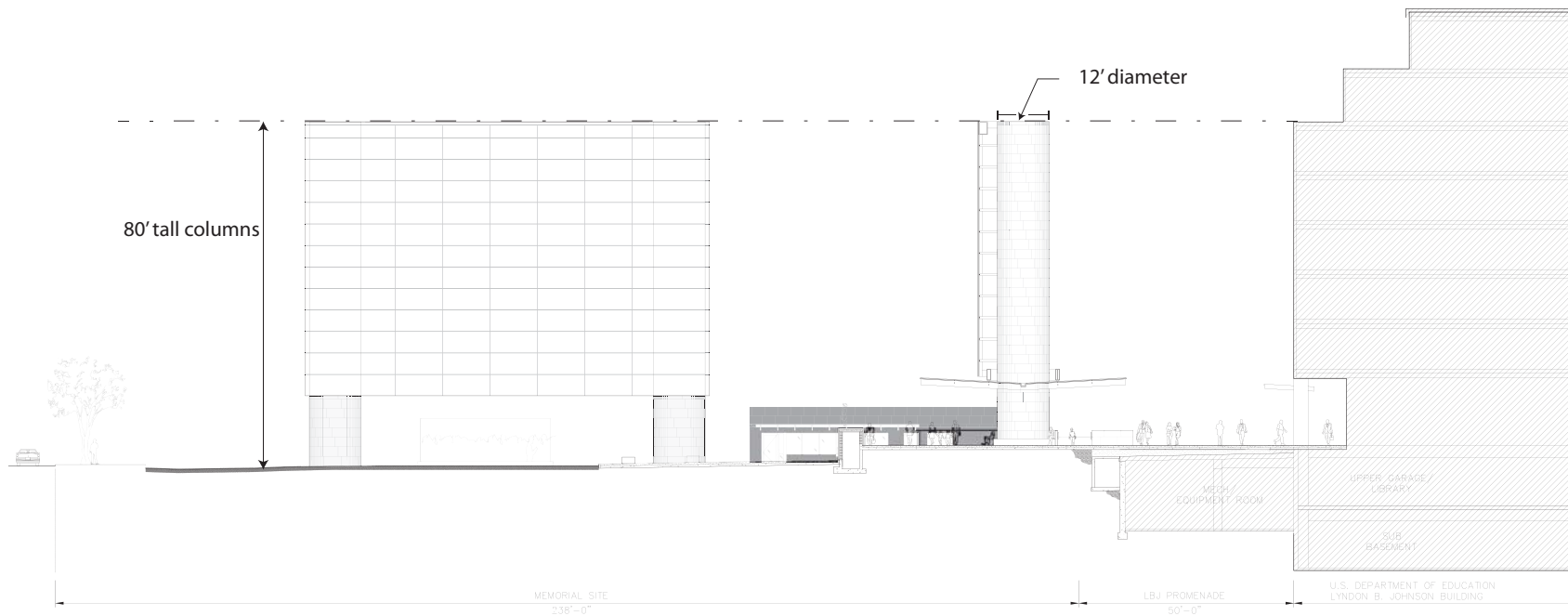
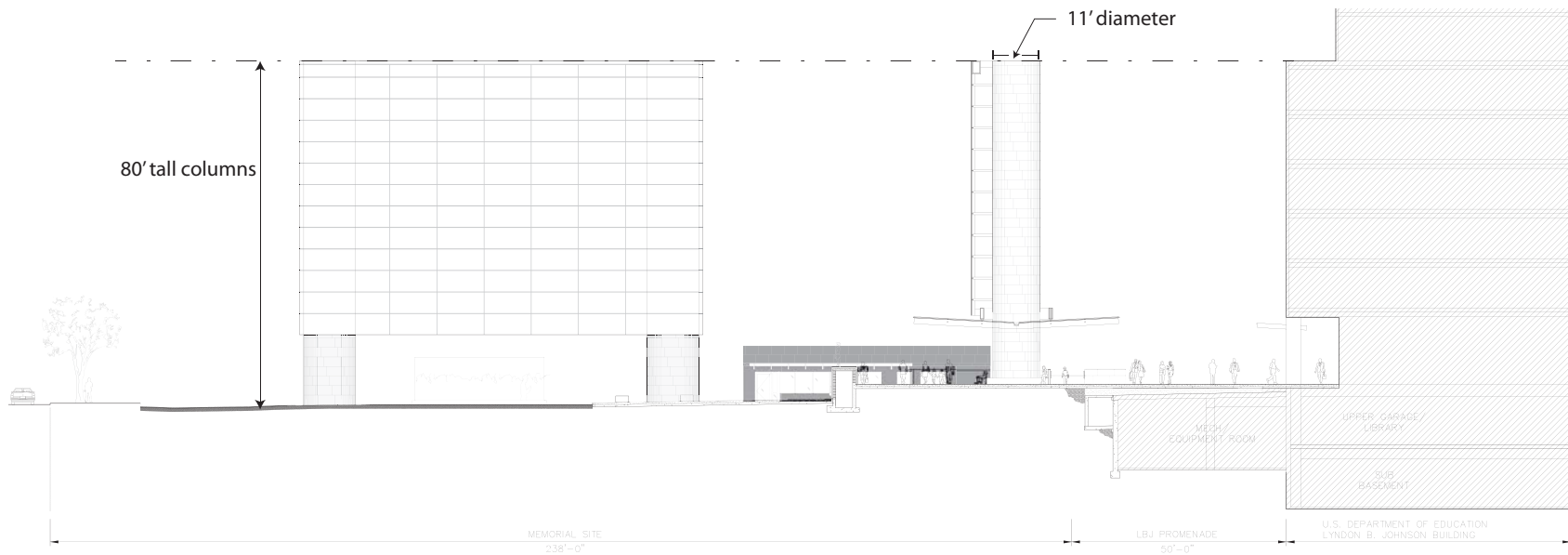
TAPESTRY SAMPLE 3:
FULL SCALE MOCK-UP AT FABRICATION SITE

SCALE STUDIES

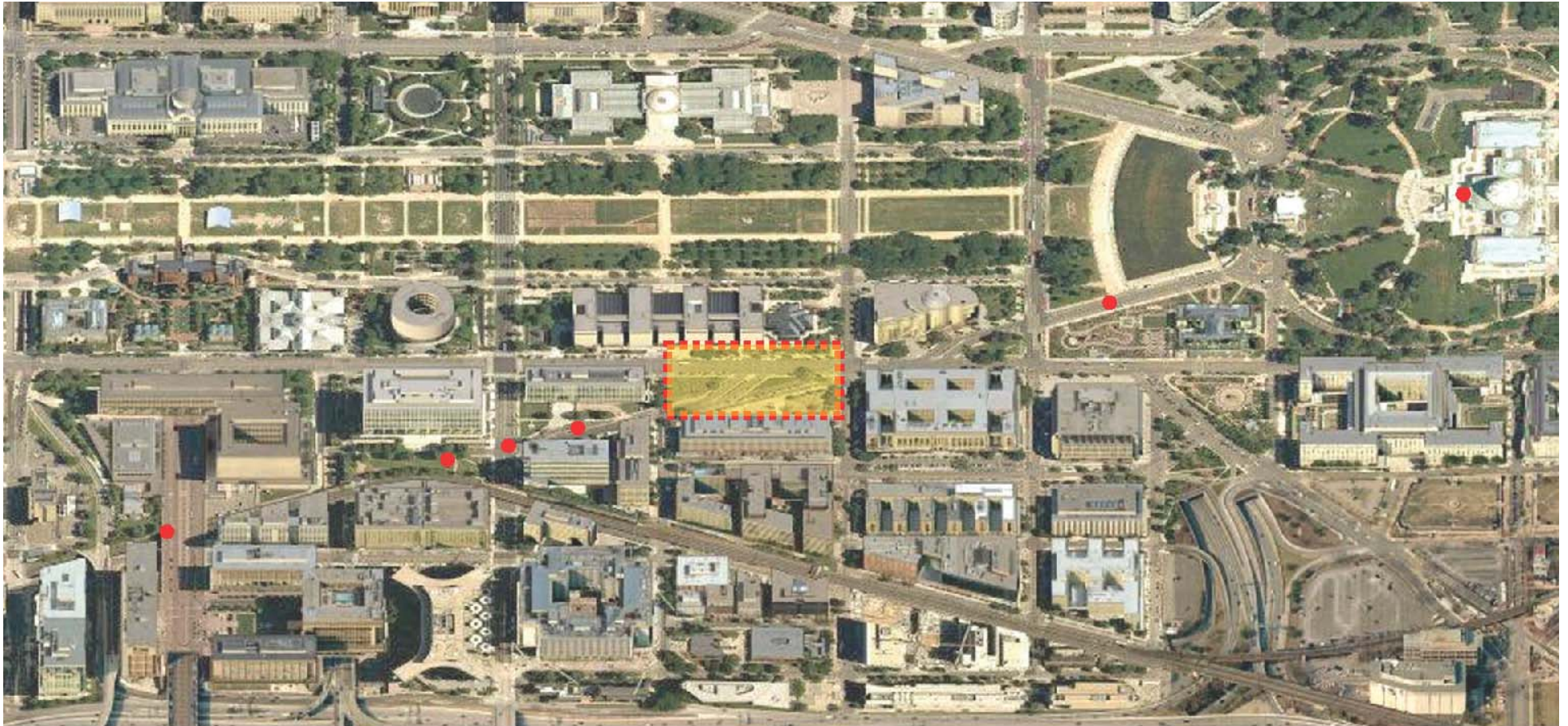
Based on the last Section 106 Consulting meeting, on June 20th, 2011, key comments and background information pertaining to scale have been summarized in the following section.

- COLUMN STRUCTURAL COMPONENTS
 - minimum 9'-0" diameter at 80' tall
- COLUMN ARCHITECTURAL COMPONENTS AND CLADDING
 - 12' diameter at 80' tall
 - 11' diameter at 80' tall
 - 11' diameter at 76' tall
- BEST PROPORTIONS ON SITE
- SITE RELATIONSHIP TO COLUMNS AND TAPESTRY
 - Massing to Air and Space Museum
 - Massing to FAA
 - Massing compared to Maryland Ave. tree size

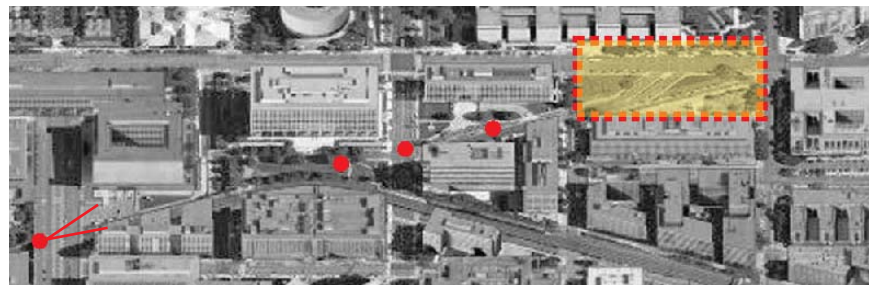




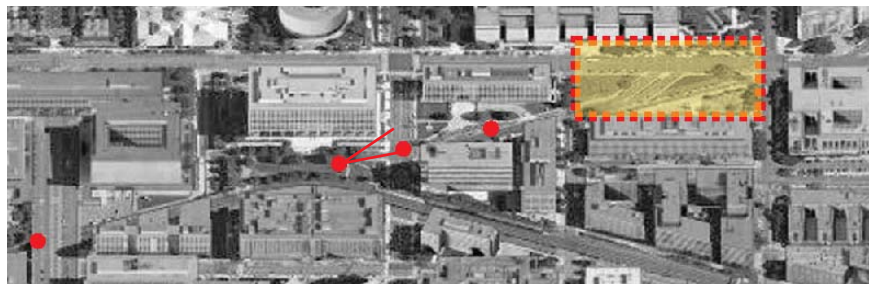
VIEW CORRIDOR STUDIES ALONG MARYLAND AVENUE



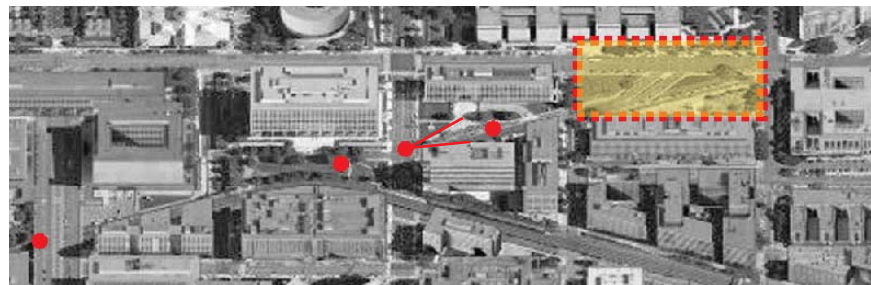
● VIEWPOINTS ALONG MARYLAND AVENUE



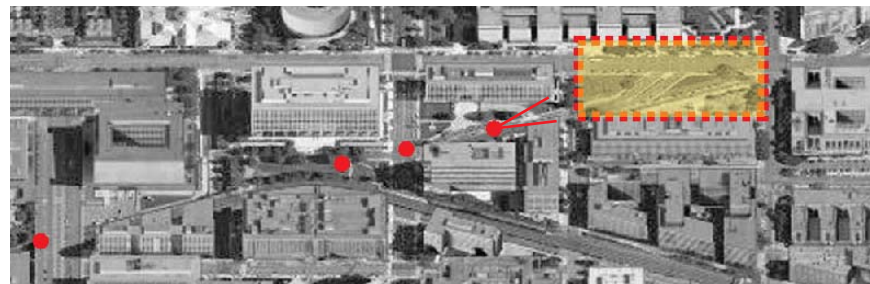
VIEW NORTHEAST FROM L'ENFANT PROMENADE



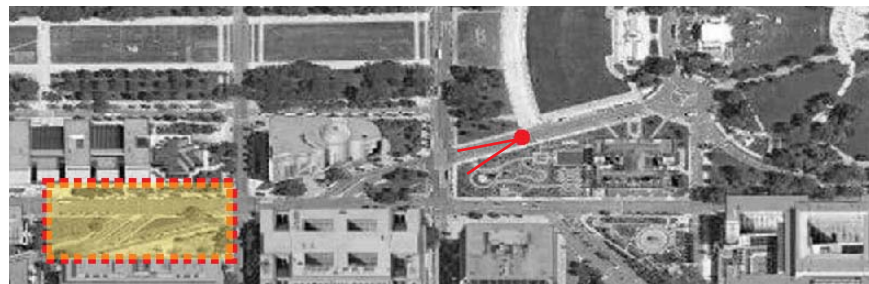
RESERVATION 113, MARYLAND AVE. LOOKING NORTHEAST



MARYLAND AVE. AND 7TH ST. AND 6TH ST. LOOKING NORTHEAST



MARYLAND AVE. MIDBLOCK BETWEEN 7TH ST. AND 6TH ST. LOOKING NORTHEAST



MARYLAND AVE. MIDBLOCK BETWEEN 6TH ST. AND 1ST ST. LOOKING SOUTHWEST



VIEW FROM THE CAPITOL LOOKING SOUTHWEST

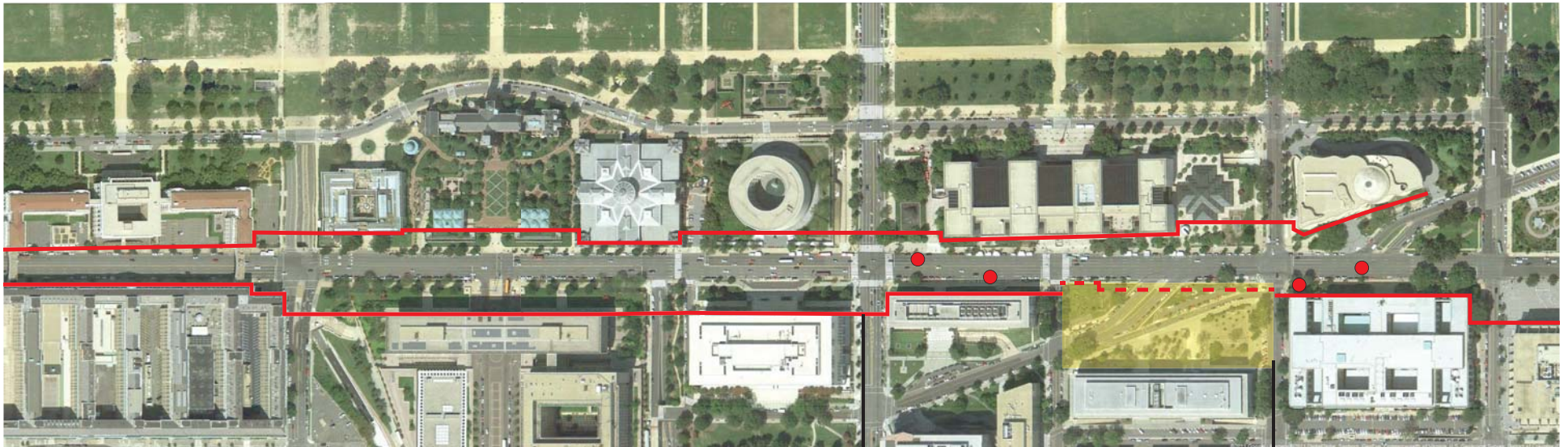


12' DIAMETER 80' HIGH



11' DIAMETER 80' HIGH

INDEPENDENCE AVENUE VIEW CORRIDOR STUDY: 14TH ST. TO 1ST ST.

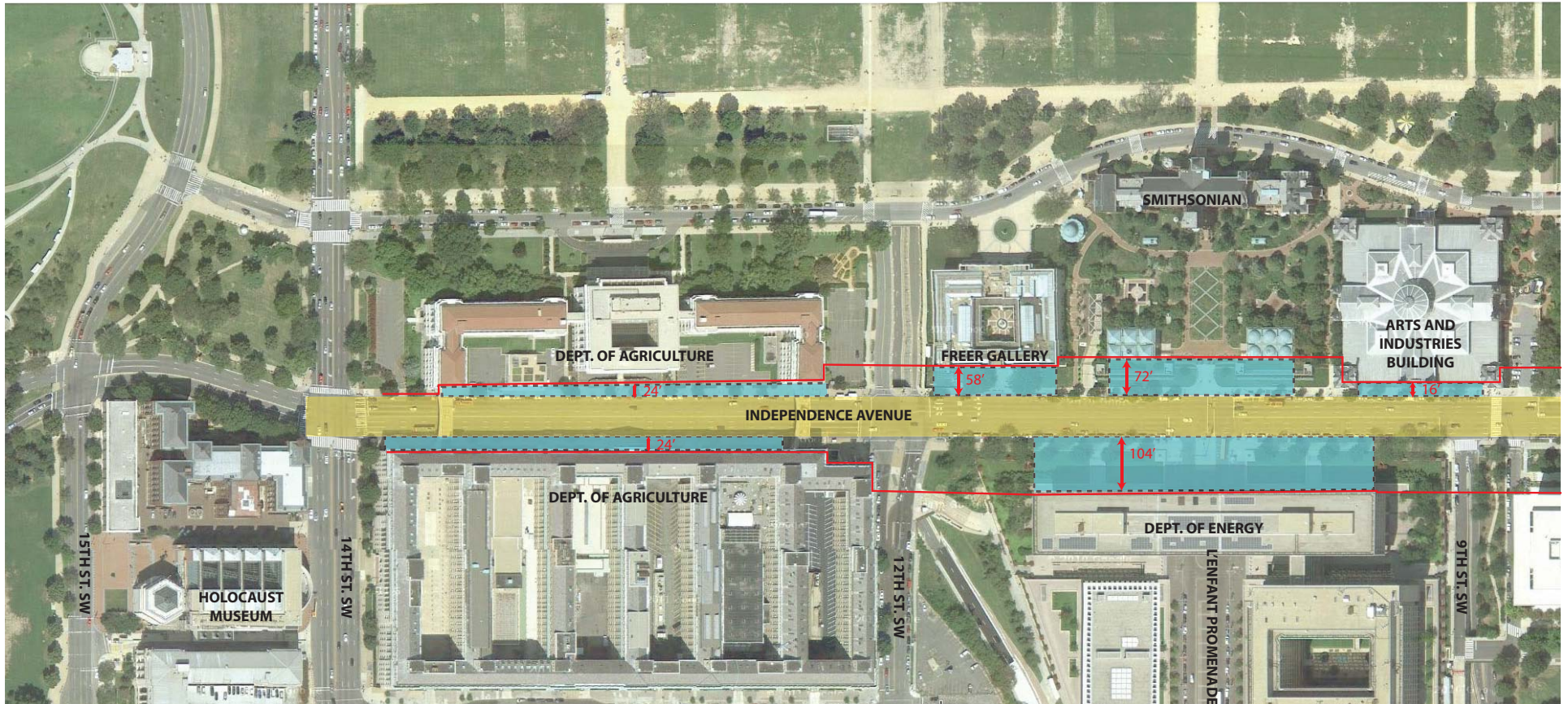


JAGGED BUILDING EDGE ON INDEPENDENCE AVENUE

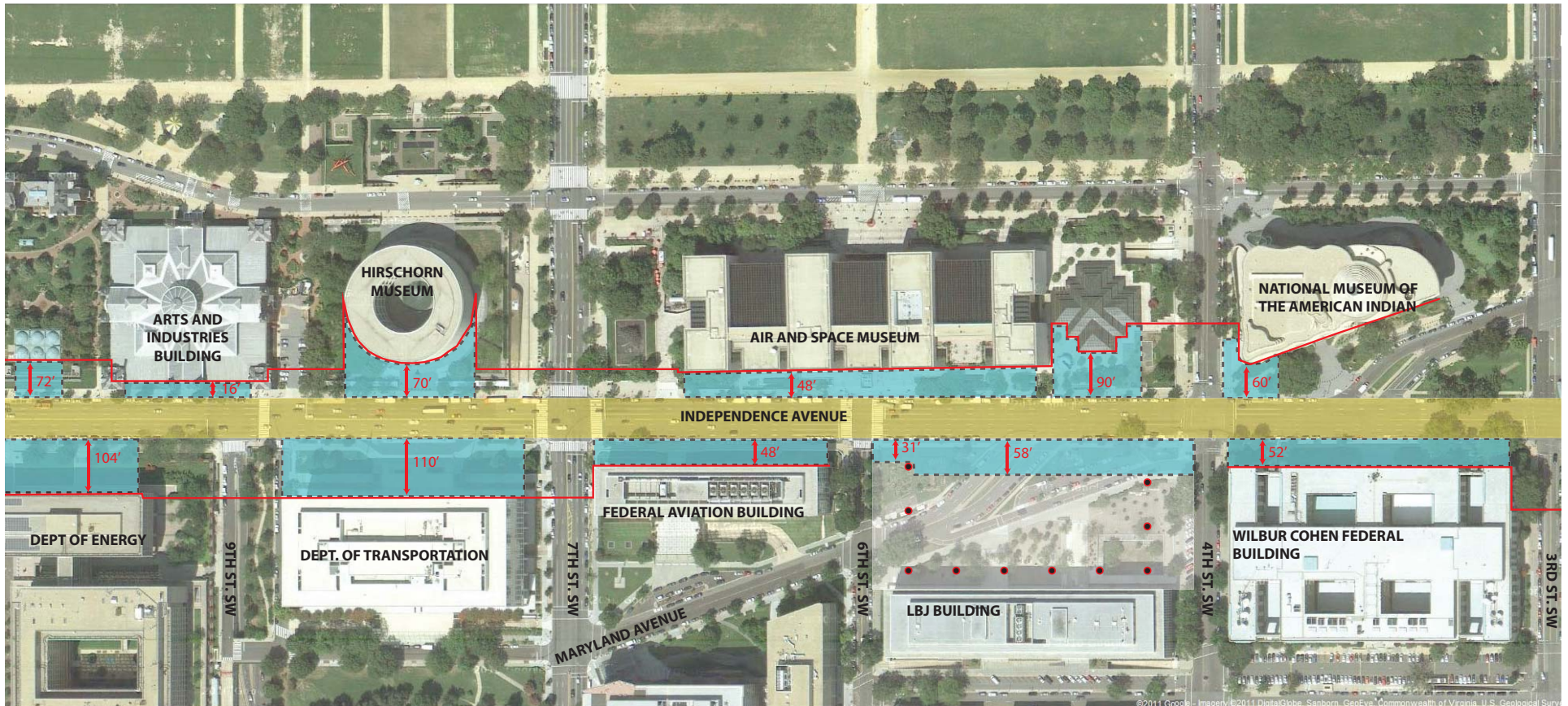
MEMORIAL SITE

● STUDIED VIEW

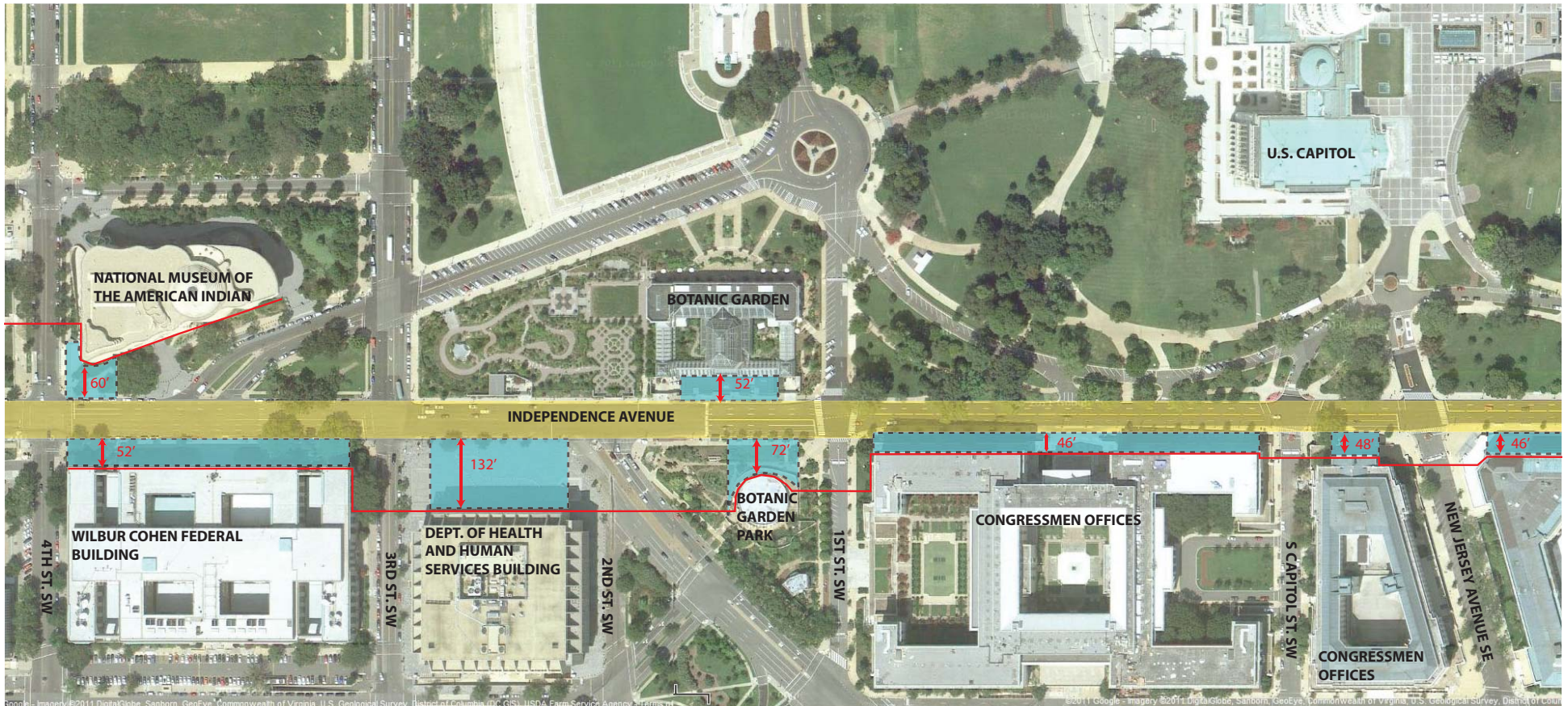
INDEPENDENCE AVENUE VIEW CORRIDOR STUDY: 14TH ST. TO 9TH ST.



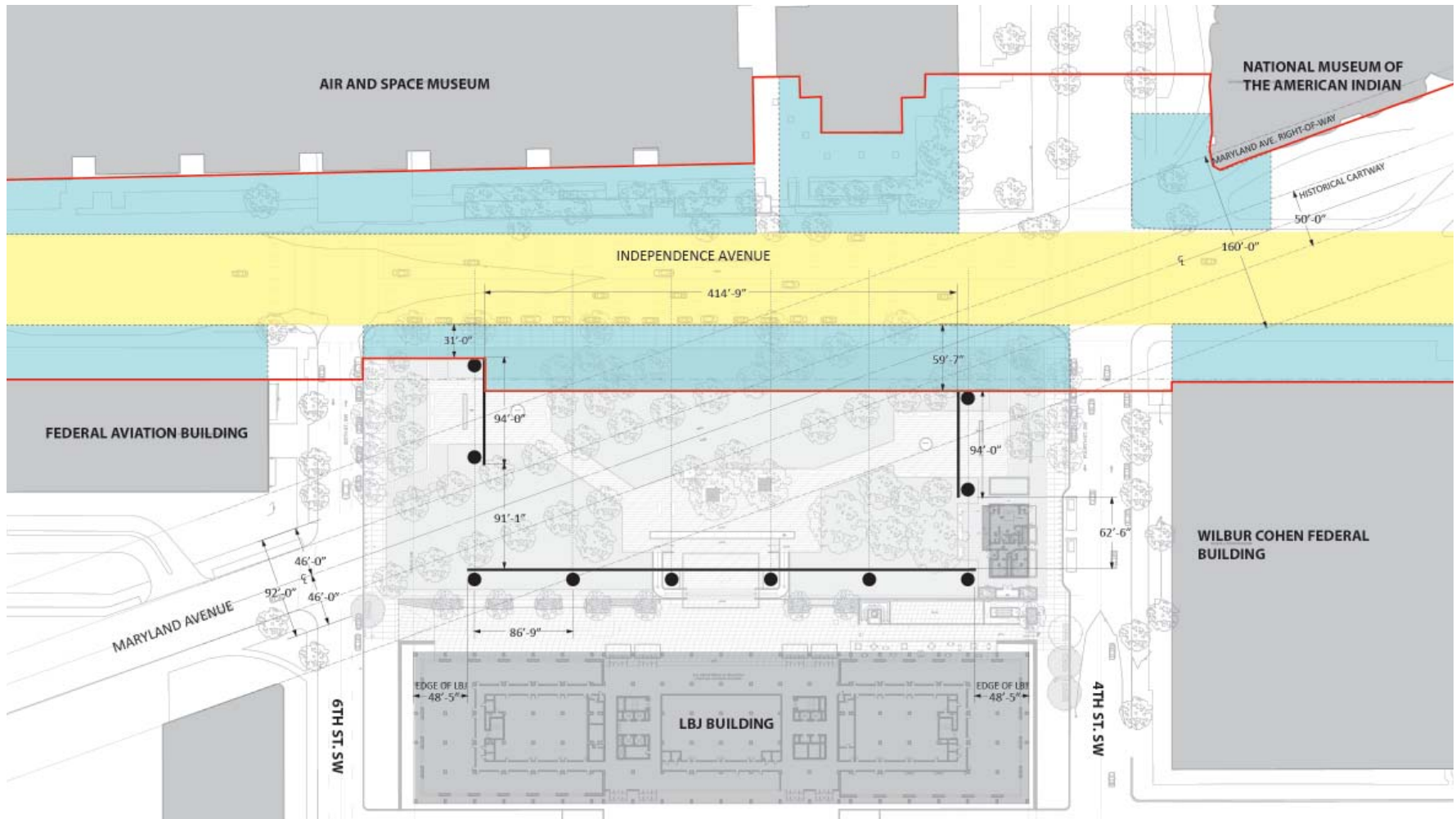
INDEPENDENCE AVENUE VIEW CORRIDOR STUDY: 9TH ST. TO 3RD ST.

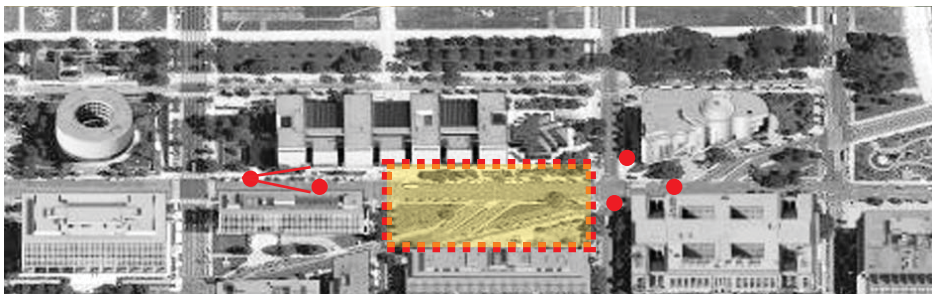


INDEPENDENCE AVENUE VIEW CORRIDOR STUDY: 3RD. TO 1ST ST.

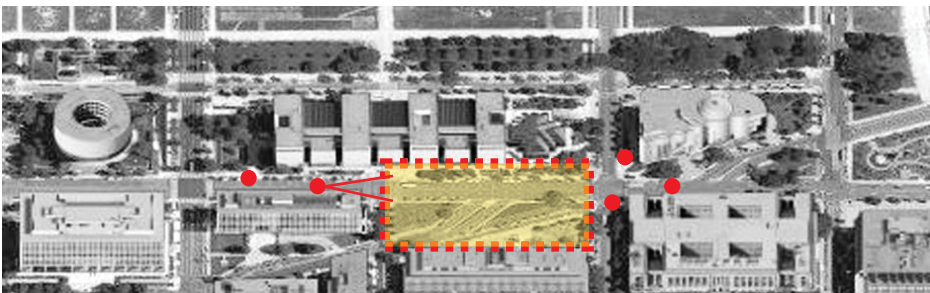


COLUMN PLACEMENT DIAGRAM

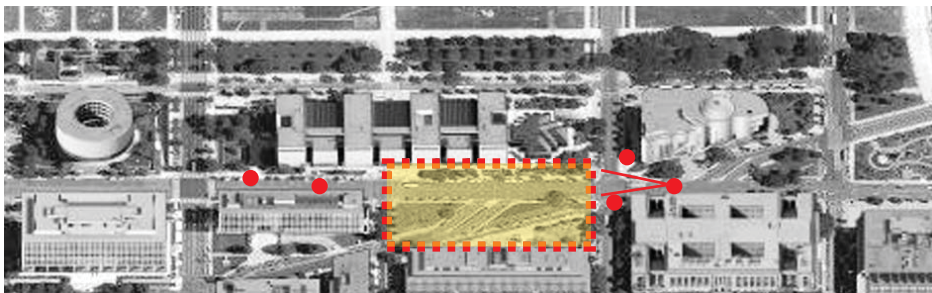




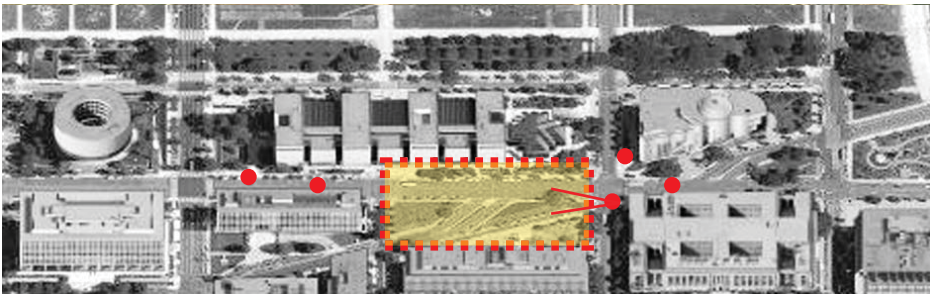
VIEW 1 ALONG INDEPENDENCE AVENUE



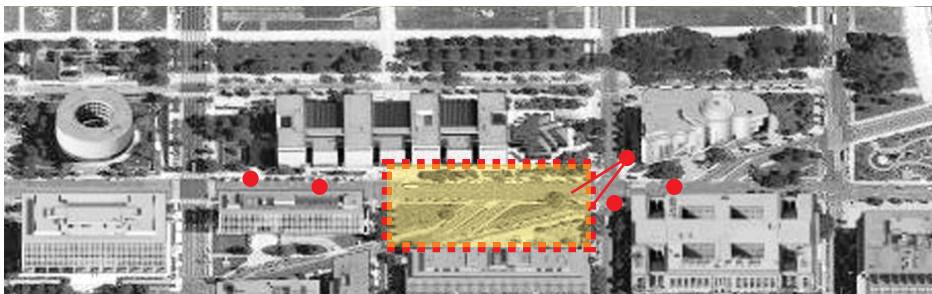
VIEW 2 ALONG INDEPENDENCE AVENUE



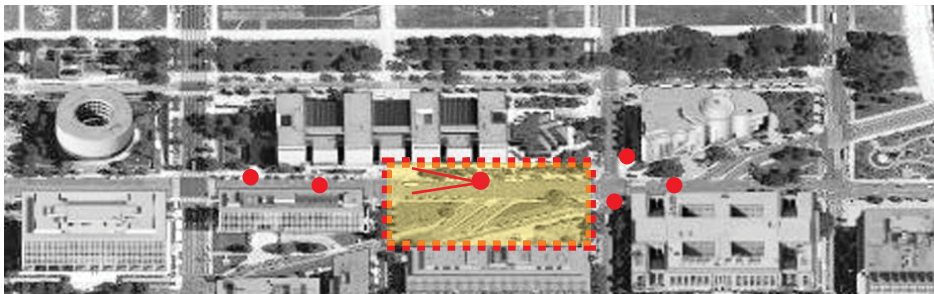
VIEW 3 ALONG INDEPENDENCE AVENUE



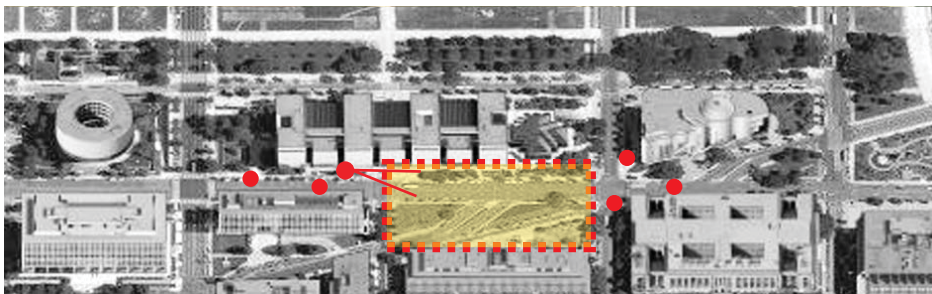
VIEW 4 ALONG INDEPENDENCE AVENUE



VIEW 5 FROM 4TH STREET



VIEW 6 ALONG INDEPENDENCE AVENUE

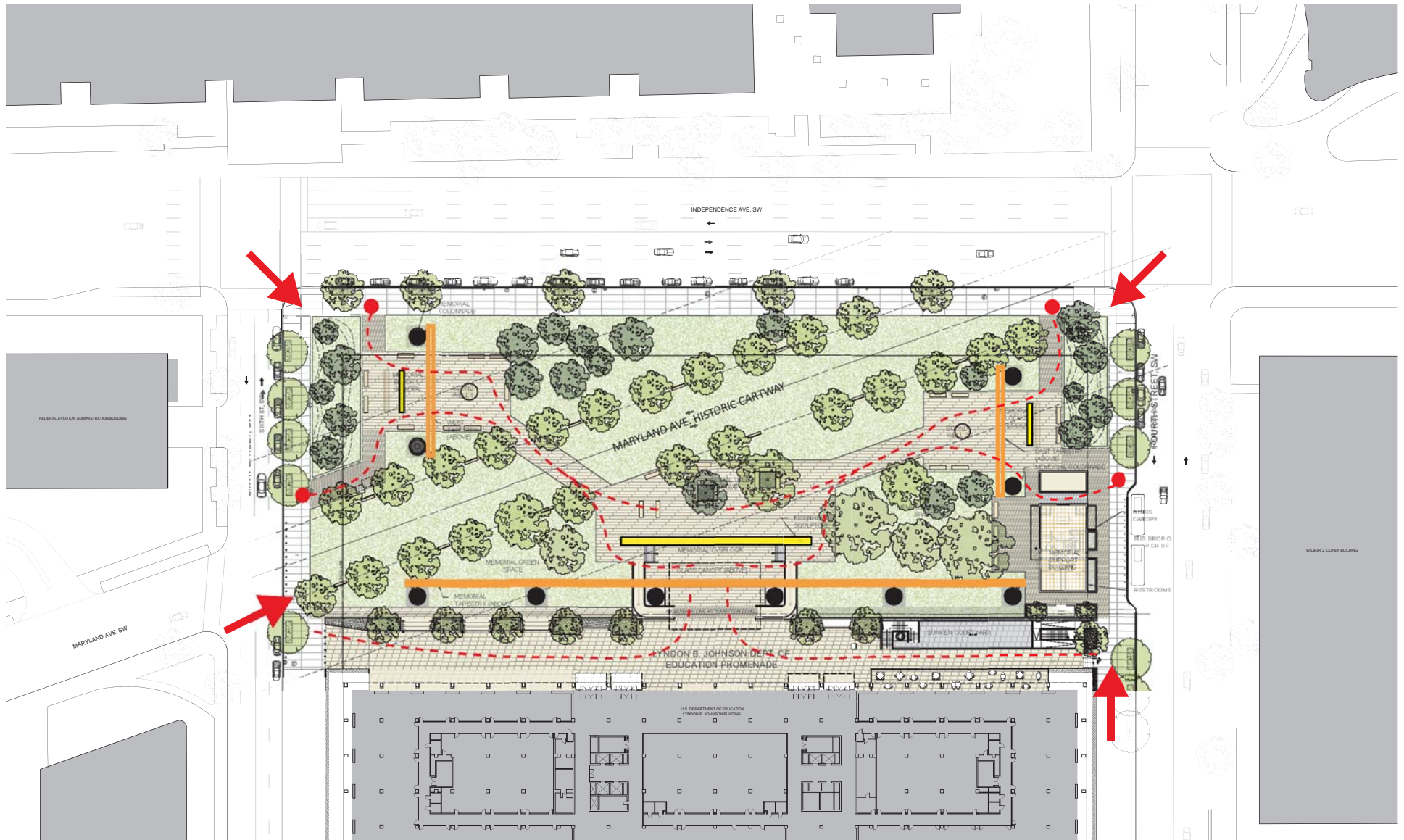


VIEW 7 ALONG INDEPENDENCE AVENUE

GROUNDPLANE



MEMORIAL ELEMENTS AND CIRCULATION

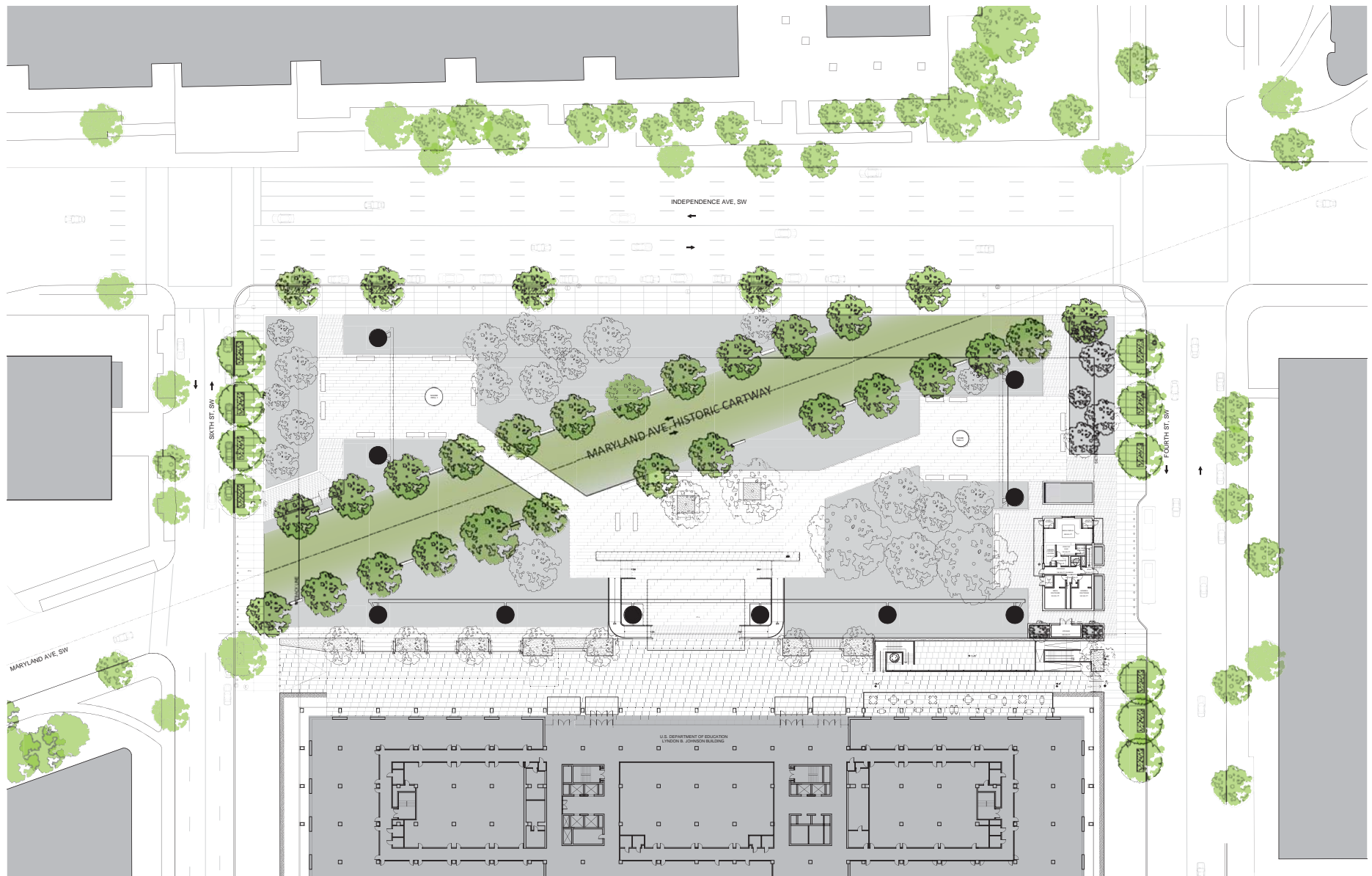


- ➔ PRIMARY SITE ENTRANCES
- MEMORIAL ENTRANCES


SUNKEN SWALE

EISENHOWER MEMORIAL
Gehry Partners • AECOM Joint Venture

MARYLAND AVENUE TREE ALLEE

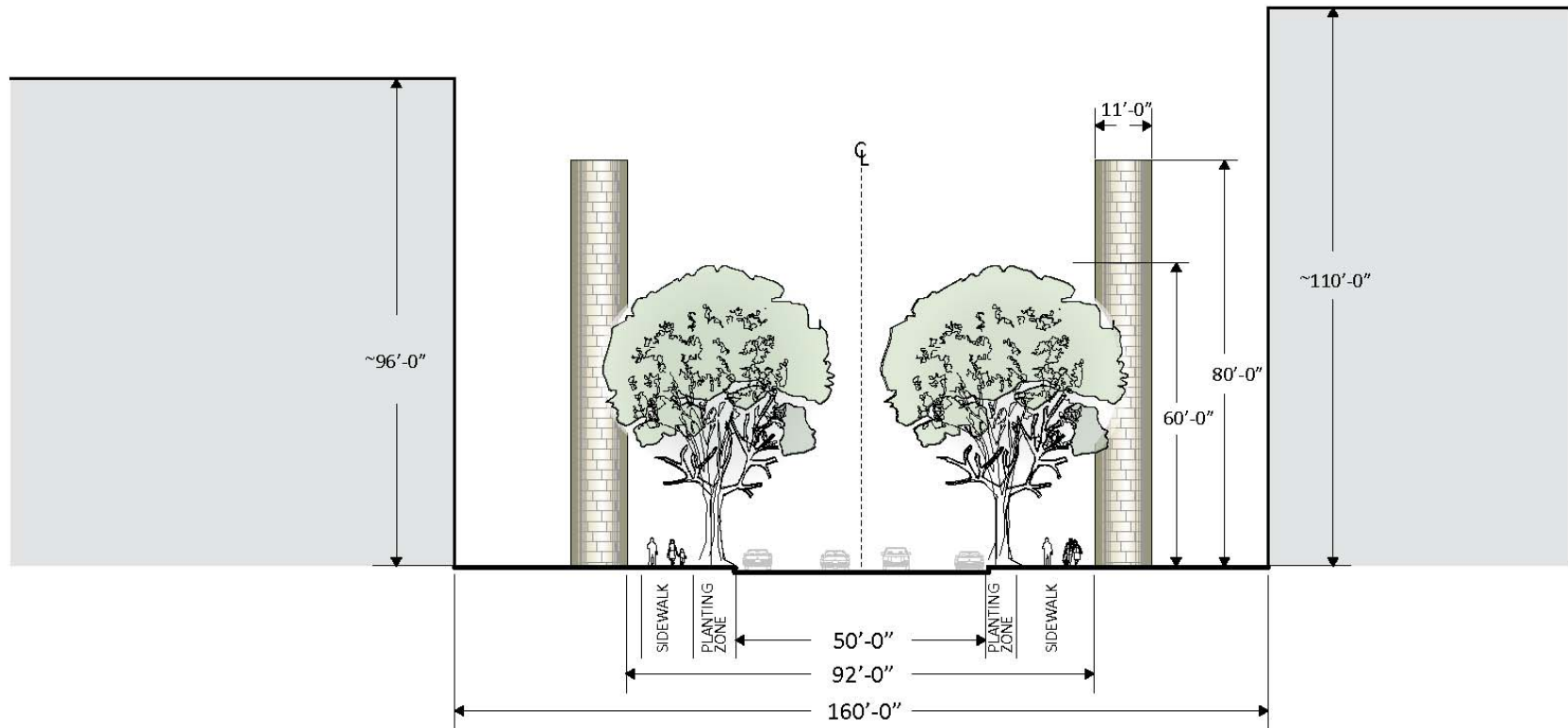


MARYLAND AVENUE TREE ALLEE PRECEDENT



EINSTEIN ALLEE, PRINCETON, NEW JERSEY

STREET TREE TO COLUMN RELATIONSHIP



SECTION ALONG MARYLAND AVENUE
BETWEEN 6TH AND 7TH STREETS

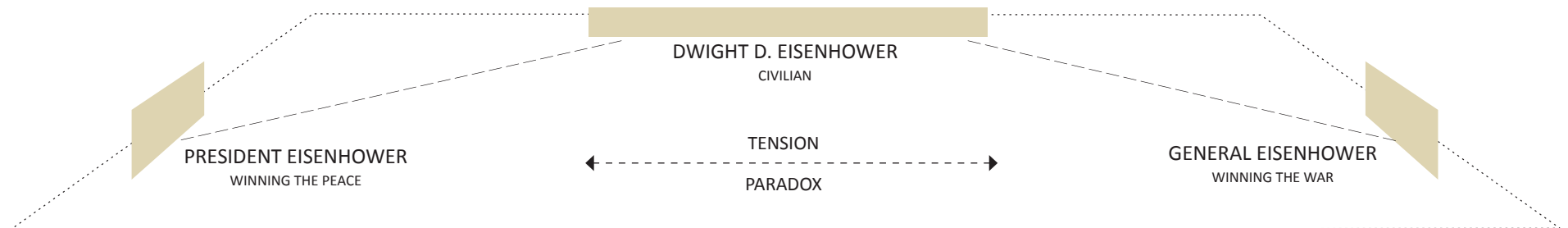
THEMATICS

THE EISENHOWER MEMORIAL STRESSES THE HUMILITY, POETRY,
AND VALUES INSTILLED WITHIN THE AMERICAN LANDSCAPE.

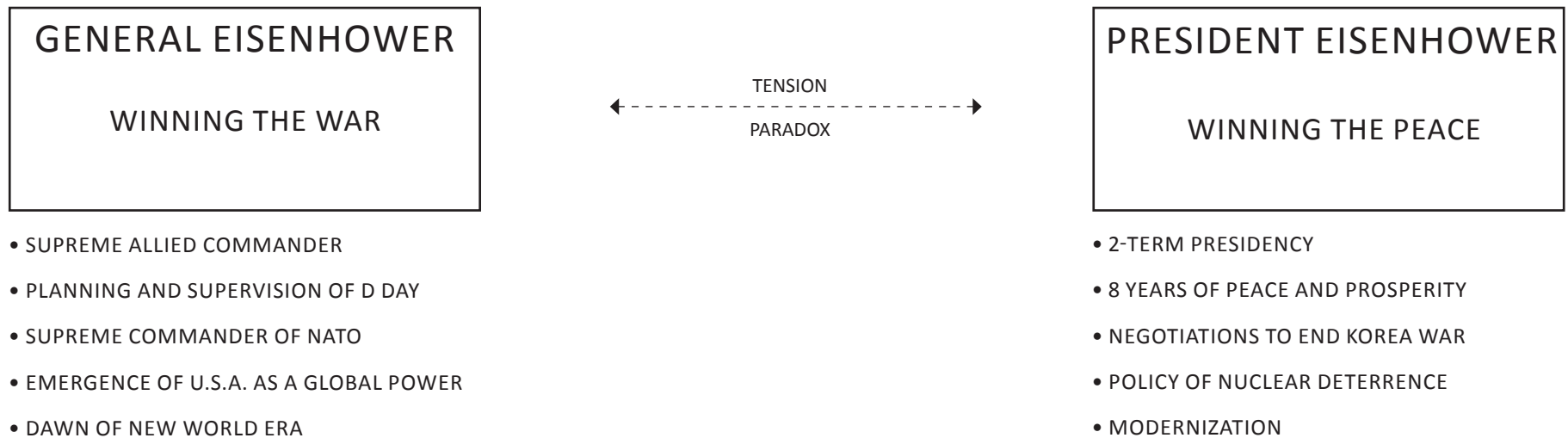


USING THE ABILENE LANDSCAPE AS AN EMBODIMENT OF EISENHOWER'S:

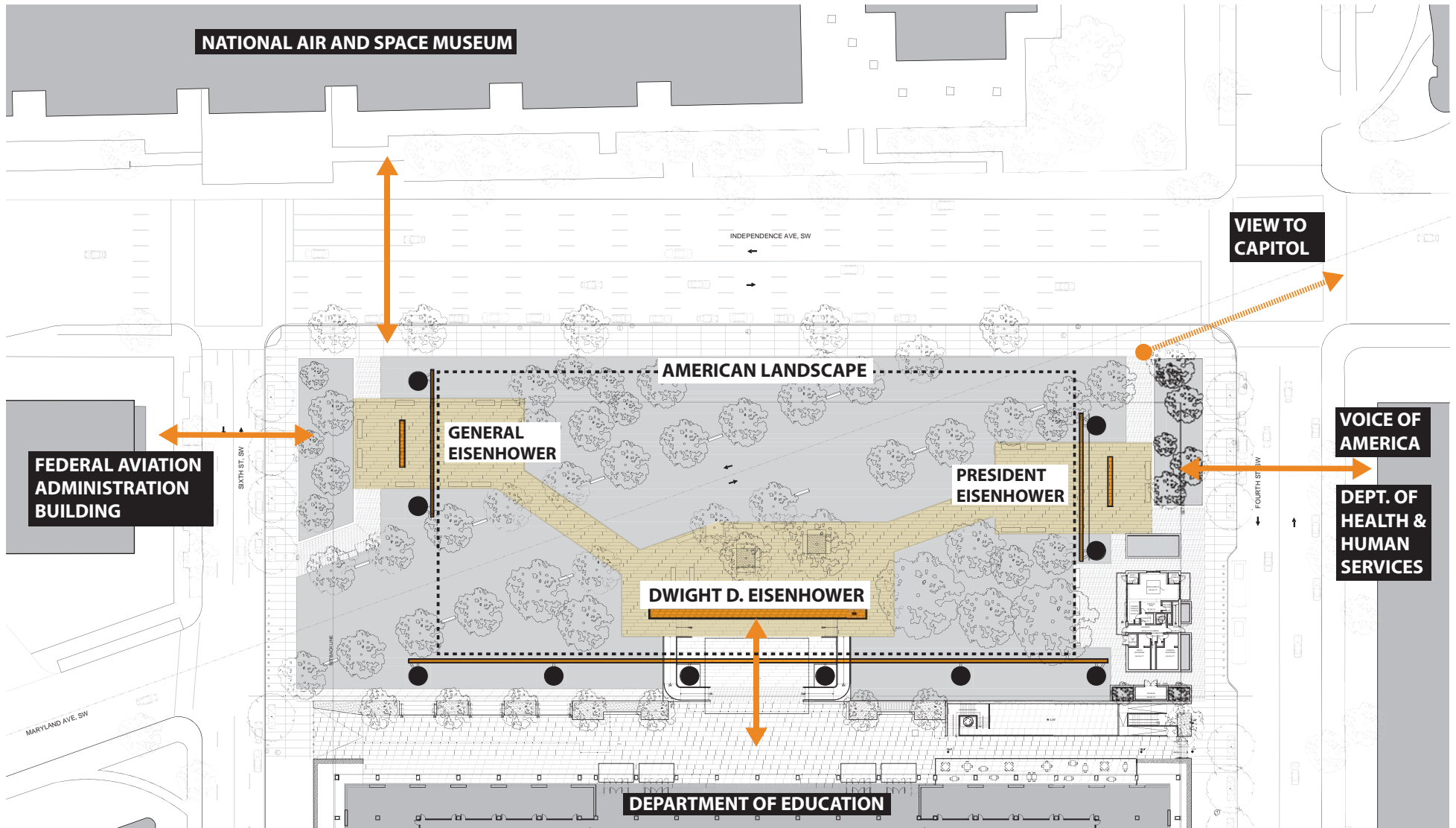
- PERSONAL JOURNEY
- CHARACTER
- VALUES
- METAPHOR FOR UNITED STATES (GEOGRAPHICAL CENTER)
- METAPHOR FOR BALANCE AND MEASURED DECISIONS (CENTRIST)



EISENHOWER'S ACHIEVEMENTS



SITE RELATIONSHIPS



Transportation

Federal Administration Building

Eisenhower worked with Congress to create the Interstate Highway System, and he actively promoted airport development with the establishment of the Federal Aviation Administration. He had a personal hand in selecting the site of Washington Dulles International Airport, the first U.S. international airport.

Air & Space Exploration

Smithsonian National Air & Space Museum

Eisenhower led the effort to create the U.S. Air Force while Chief of Staff of the Army, and he strongly supported aircraft development. He signed legislation and supported development of the Air Force Academy, and he was the driving force in creating the National Aeronautics and Space Administration.

Education

LBJ Department of Education

Eisenhower was responsible for the first breakthroughs on direct federal aid to education and the National Defense Education Act; he started federal student grant/loan programs, graduate fellowships, and grants to improve public school instruction in mathematics, science, and modern languages.

Voice of America

Eisenhower established the U.S. Information Agency in 1953 with the Voice of America as its principal component.

Department of Health & Human Services

When the Department of Health, Education, and Welfare (predecessor to HHS) was formed, President Eisenhower appointed Mrs. Oveta Culpa Hobby as its first Secretary. She led the effort to pass Eisenhower's Social Security legislation in 1954, the largest single expansion of Social Security.

EISENHOWER MEMORIAL

Gehry Partners • AECOM Joint Venture

