



# United States Department of the Interior



## NATIONAL PARK SERVICE

National Mall and Memorial Parks  
900 Ohio Drive, S.W.  
Washington, D.C. 20024-2000

May 8, 2015

Mr. David Maloney  
State Historic Preservation Officer  
District of Columbia, Office of Planning  
1100 4th Street SW, Suite E650  
Washington D.C. 20024

Subject: Dwight D. Eisenhower Memorial Final Determination of Effect, Stipulation 11 of the 2012 Memorandum of Agreement

Dear Mr. Maloney:

In accordance with Stipulation 11 of the 2012 Memorandum of Agreement (MOA) among the National Park Service, the Eisenhower Memorial Commission (EMC), the National Capital Planning Commission (NCPC), the Advisory Council on Historic Preservation, and the District of Columbia State Historic Preservation Officer (DC SHPO), the purpose of this letter is to record our final determination of effect for the establishment of the Dwight D. Eisenhower Memorial in Washington, DC. Following design review by NCPC and the Commission of Fine Arts (CFA) and concurrent consultation with the Signatories and Consulting Parties, the National Park Service has determined that the plans submitted at the Section 106 consulting parties meeting on December 9, 2014 and subsequent graphic response document circulated on March 4, 2015, effectively represents the proposed final design documentation and does not result in new adverse effects or intensify known adverse effects on historic properties established in the 2012 MOA (see attachments).

Since the initial consultation with DC SHPO on April 12, 2010, the design of the Dwight D. Eisenhower Memorial has evolved to reflect the input of many individuals and organizations. In particular, the tapestry and column design for the memorial, which was proposed in 2010, underwent revisions before its final design in the 2012 MOA (tapestry study is available on the NCPC website). At that time, the north tapestries had been reoriented to an east and west alignment and the south tapestry narrowed by one bay. These refinements were considered by the consulting parties to be appropriate, a response that would frame the U.S. Capitol, and a change that was positive and well-purposed. However, following 2012, additional changes in the dimensions of the south tapestry and replacement of the east and west tapestries for two freestanding columns have further minimized the adverse visual effects on the L'Enfant Plan as well as the historic Cohen, Johnson, and Wright Buildings. Also, shifting the free standing columns south of the facades of the Cohen and Wright Buildings has improved sightlines along Independence Avenue and incorporating a granite curb into the ground plane has improved recognition of Maryland Avenue's cartway.

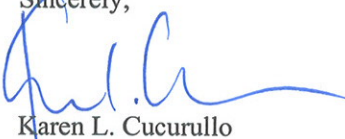
Finally, at the December 9, 2014 consulting parties meeting, the DCSHPO and National Civic Art Society proposed additional minimization measures, which entailed reconsideration of the tapestry design, including artwork, as well as the elimination of the easternmost and westernmost bays of the tapestry (but retaining the columns). In response to this proposal, the NPS has concluded that the design team's

extensive studies of the south tapestry, most of which was conducted prior to the MOA, and significant revisions to the position and scale of the memorial tapestry elements over the years, has improved the design of the memorial when compared to the plans that were incorporated into the final 2012 MOA. During this time, the tapestry has been reduced in vertical dimension and its width reduced by a full bay, and the transparency of the imagery has been refined. Furthermore, the south tapestry is a character-defining and unifying element of the memorial, providing a scenic backdrop of an idealized Kansas landscape that will blend with the landscape of the memorial grounds. The proposal to reduce the tapestry by one bay at the east and west sides would do unacceptable harm to the essential concept of the memorial. Aside from these changes, improvements to the night lighting and planting palette have further improved the overall design of the memorial. For these reasons, the NPS believes that these design refinements satisfy the requirements of Stipulation 10 of the MOA and the adverse effects of the memorial design on historic properties have been minimized to the greatest possible extent, and that further studies are not warranted.

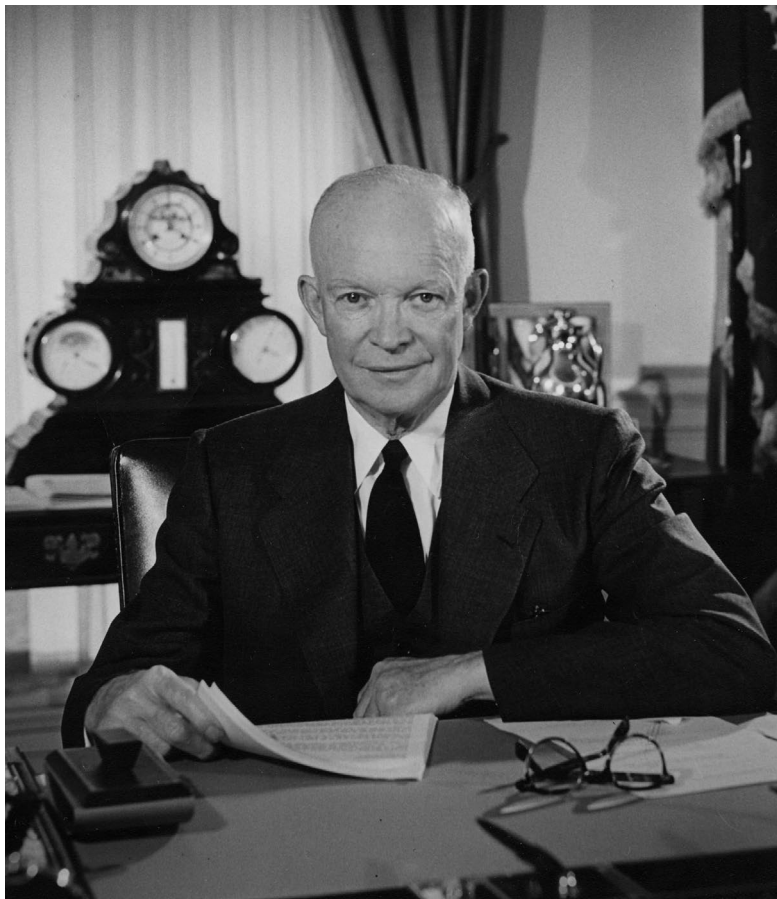
The artwork, width and organization of the tapestry was guided by legislatively designated Commissions that advise development in the Federal City and was evaluated and established as acceptable in 2012. Therefore, the NPS seeks your concurrence with our final determination of effect. In accordance with the MOA, this determination and the final design documentation will be posted on the NPS Planning, Environment & Public Comment (PEPC) website for a 14-day review and comment period, ending May 22, 2015. We look forward to continuing to work with you as we prepare to submit the plans for final approval for the June meeting of the CFA and the July 2015 meeting of the NCPC.

If you have any questions, please do not hesitate to contact Catherine Dewey, Chief of Resource Management, at 202- 245-4711 or [catherine\\_dewey@nps.gov](mailto:catherine_dewey@nps.gov).

Sincerely,



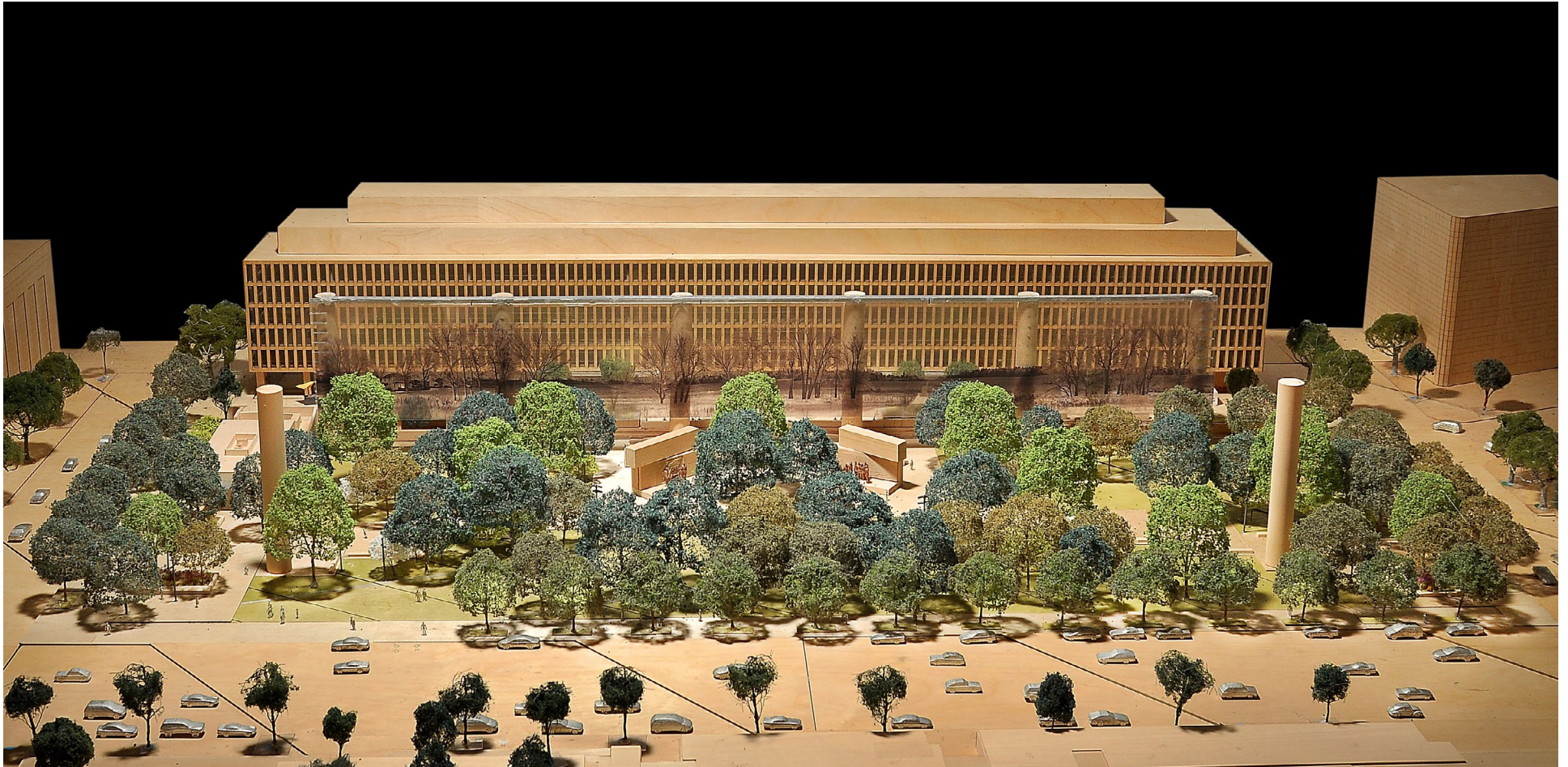
Karen L. Cucurullo  
Acting Superintendent  
National Mall and Memorial Parks



## **EISENHOWER MEMORIAL**

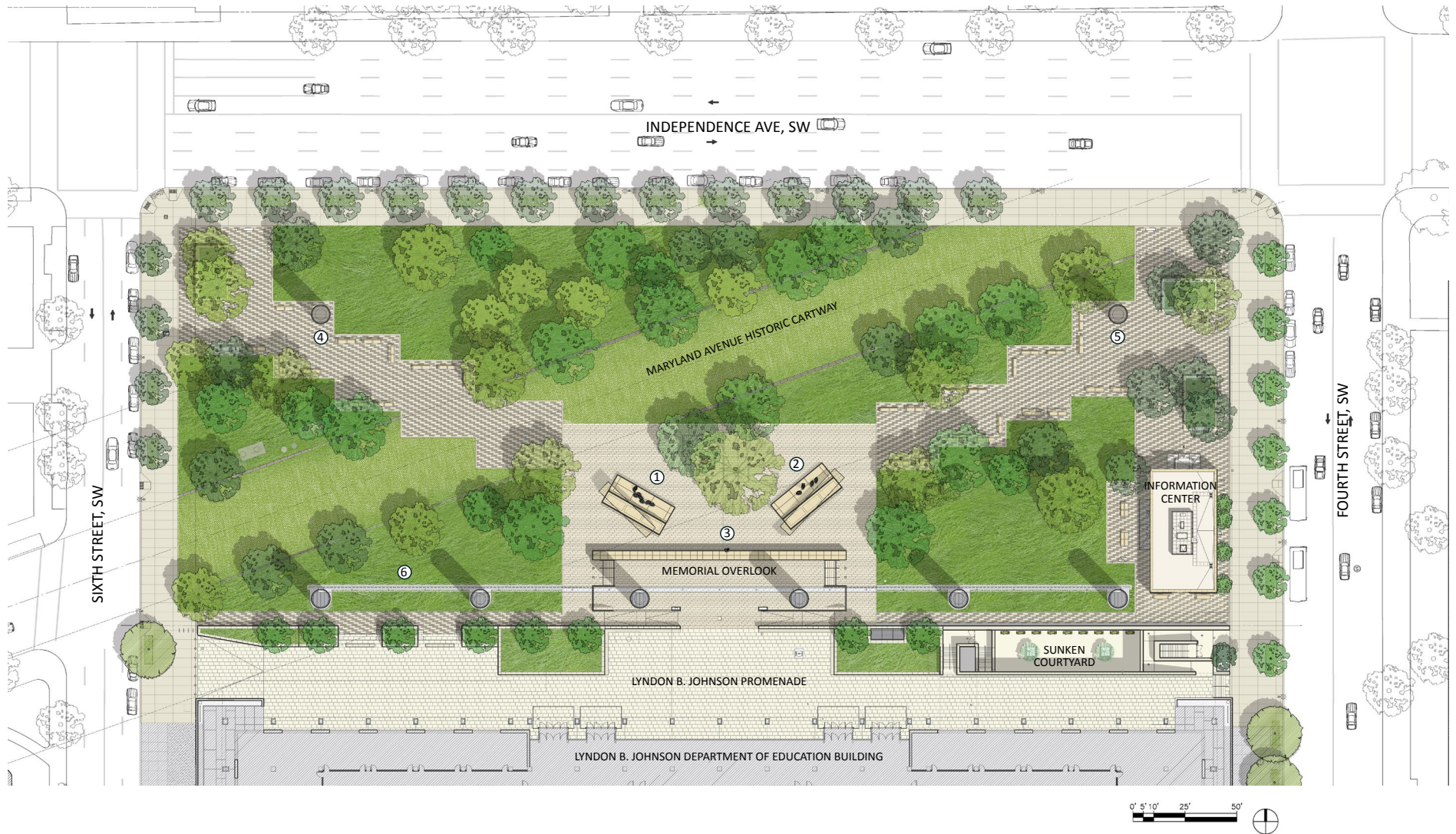
**ATTACHMENTS TO FINAL 106 MOA FINDING**





APRIL 2015 DESIGN: AERIAL VIEW





- ① GENERAL EISENHOWER MEMORIAL ELEMENT
- ② PRESIDENT EISENHOWER MEMORIAL ELEMENT
- ③ YOUNG EISENHOWER STATUE

- ④ WEST COLUMN
- ⑤ EAST COLUMN
- ⑥ SOUTH TAPESTRY

APRIL 2015 DESIGN: SITE PLAN

## EISENHOWER MEMORIAL

Gehry Partners • AECOM Joint Venture





APRIL 2015 DESIGN: VIEW ALONG MARYLAND AVENUE TOWARDS CAPITOL





PRESIDENT EISENHOWER  
MEMORIAL ELEMENT

YOUNG EISENHOWER STATUE

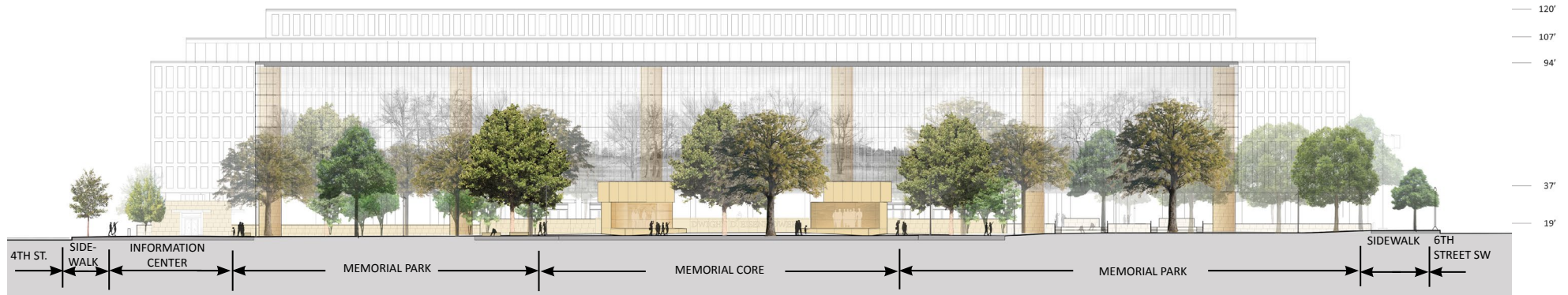
GENERAL EISENHOWER  
MEMORIAL ELEMENT

APRIL 2015 DESIGN: MEMORIAL CORE

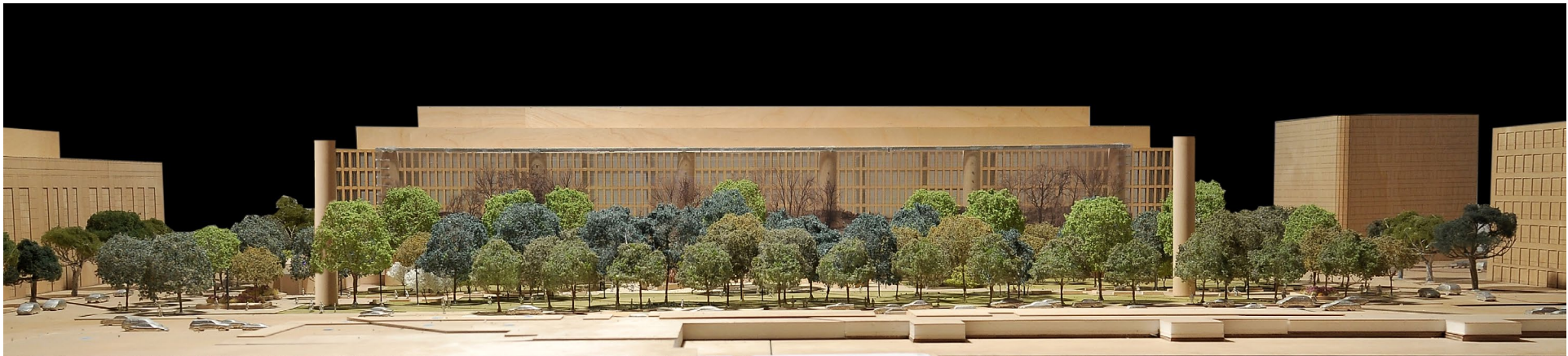
EISENHOWER MEMORIAL

Gehry Partners • AECOM Joint Venture





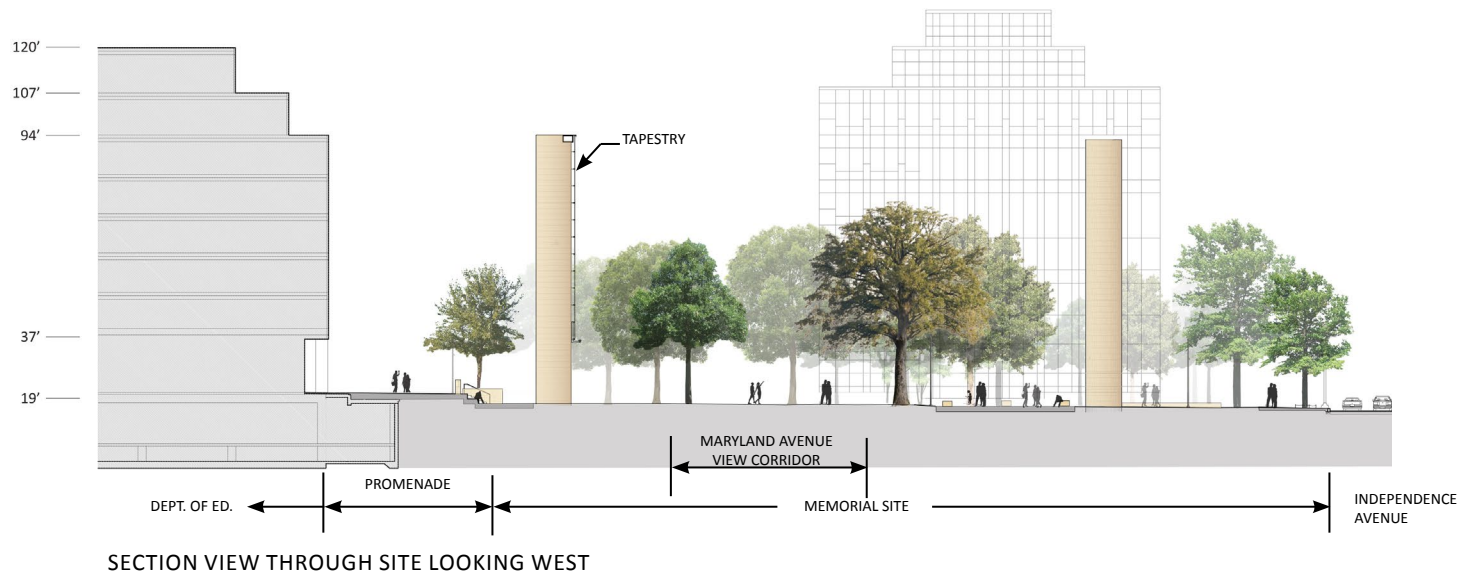
SECTION VIEW LOOKING SOUTH IN SUMMER



ELEVATION VIEW FROM INDEPENDENCE AVENUE IN SUMMER

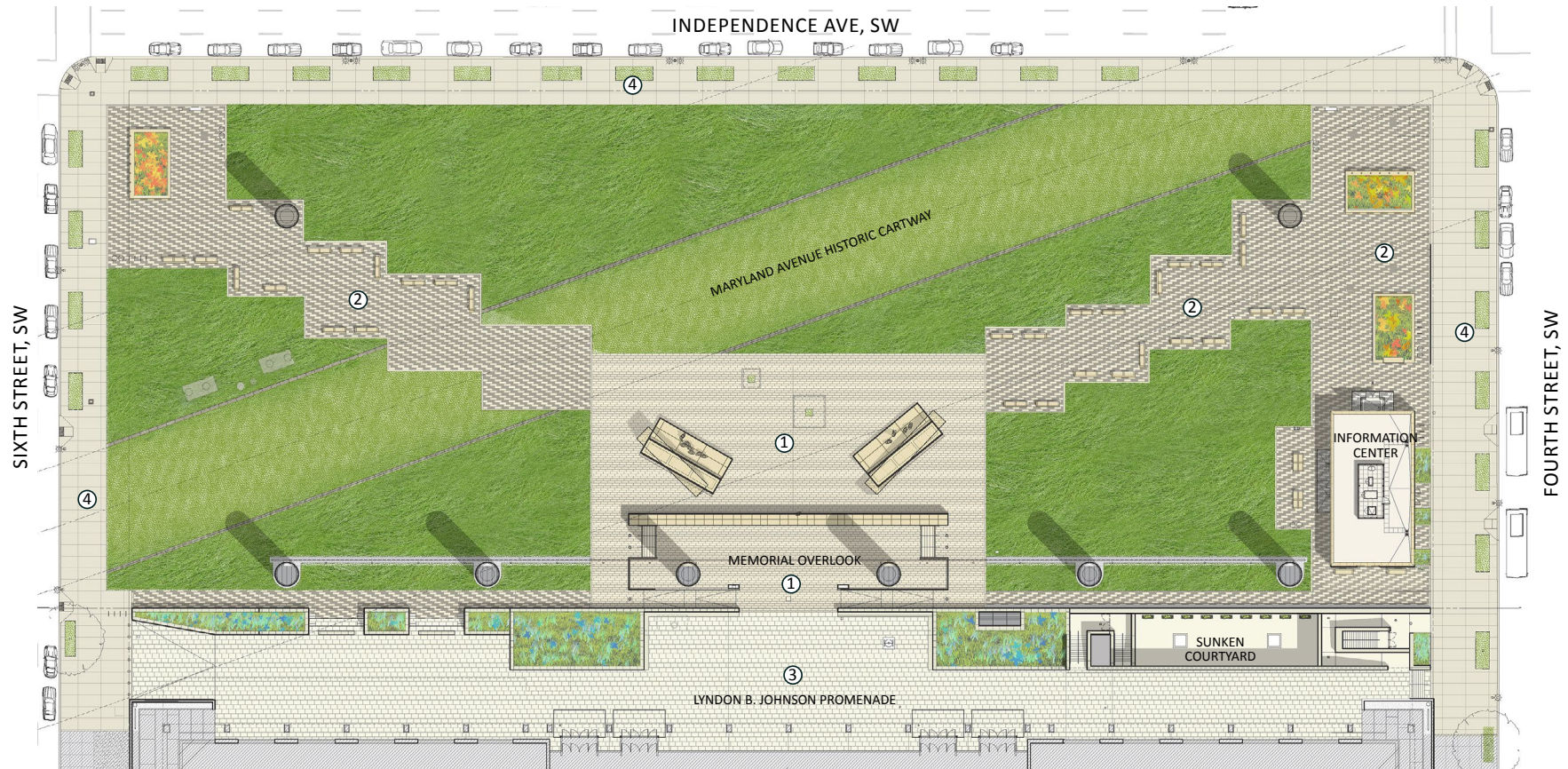
APRIL 2015 DESIGN: ELEVATIONS





APRIL 2015 DESIGN: SITE SECTIONS

EISENHOWER MEMORIAL  
Gehry Partners • AECOM Joint Venture



## GROUNDPLANE PLANTING



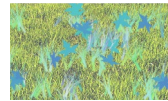
TURF TYPE 1



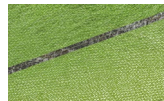
TURF TYPE 2



MEMORIAL  
PLANTERS



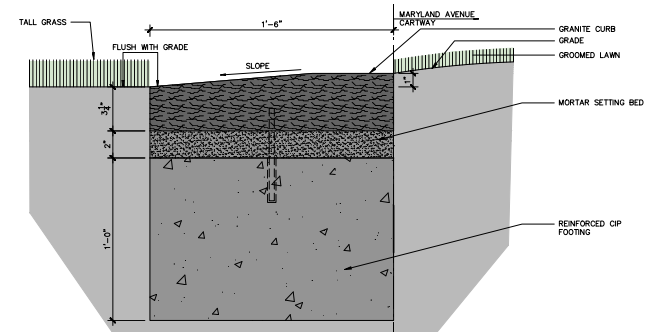
PROMENADE  
PLANTERS



GRANITE CURB

## PAVING PLAN KEY:

- ① AMBAR LIMESTONE PAVERS
- ② AMBAR AND GRANITE PAVERS
- ③ PRECAST CONCRETE PAVERS
- ④ EXPOSED AGGREGATE CONCRETE



GRANITE CURB DETAIL

APRIL 2015 DESIGN: GROUNDPLANE PLANTING

EISENHOWER MEMORIAL

Gehry Partners • AECOM Joint Venture





APRIL 2015 DESIGN: COMMEMORATIVE ART NIGHTTIME LIGHTING





APRIL 2015 DESIGN: VIEW ALONG MARYLAND AVENUE TOWARDS CAPITOL