

Acronyms and Abbreviations

ADA	Americans with Disabilities Act
ANF	Angeles National Forest
BLM	Bureau of Land Management
BOR	Bureau of Reclamation also U.S. Bureau of Reclamation
CAA	Clean Air Act
CCC	Civilian Conservation Corps
CDC	California Department of Conservation
CDFG	California Department of Fish and Game (agency name prior to change to CDFW)
CDFW	California Department of Fish and Wildlife
CDP	Census Designated Place
CDPR	California Department of Parks and Recreation, also California State Parks
CEDD	California Employment Development Department
CEQ	Council of Environmental Quality
CFR	Code of Federal Regulations
CNDDDB	California Natural Diversity Database
COSCA	Conejo Open Space Conservation Agency
CWA	Clean Water Act
CWHR	California Wildlife Habitat Relationships
DMCA	Desert and Mountain Conservation Authority
ESA	Federal Endangered Species Act
FC	Species identified by the U.S. Fish and Wildlife Service as a candidate for listing under the Endangered Species Act
FE	(Federally listed endangered species) A species listed as endangered under the Endangered Species Act
FEIS	Final Environmental Impact Report
FLPMA	Federal Land Policy and Management Act of 1976
FMMP	Farmland Mapping and Monitoring Program
FR	Federal Register
FT	(Federally listed threatened species) A species listed as threatened under the Endangered Species Act
FHWA	Federal Highway Administration
GMP	General Management Plan (National Park Service)
IBA	International Bird Area
IRWMP	Integrated regional water management plan
JPA	Joint Powers Authority
JPL	Jet Propulsion Laboratory
LA	Los Angeles
LACFCD	Los Angeles County Flood Control District
LADPW	Los Angeles Department of Public Works
LADWP	(City of) Los Angeles Department of Water and Power
LWCF	Land and Water Conservation Fund
MRCA	Mountains Recreation and Conservation Authority

MWD	Metropolitan Water District
NASA	National Aeronautics and Space Administration
NEPA	National Environmental Policy Act
NF	National Forest
NHL	National Historic Landmark
NHPA	National Historic Preservation Act
NHT	National Historic Trail
NM	National Monument
NP	National Park
NPS	National Park Service
NRA	National Recreation Area
NRCS	Natural Resources Conservation Service, United States Department of Agriculture
NRHP	National Register of Historic Places
NRT	National Recreation Trail
OHV	Off-highway Vehicles
PCT	Pacific Crest Trail
PEPC	National Park Service Planning, Environment and Public Comment Website
PL	Public Law
RCD	Resource Conservation District
RCPG	Regional Comprehensive Plan and Guide
RLC	Research Learning Center
RMC	Lower Los Angeles and San Gabriel Rivers and Mountains Conservancy or Rivers and Mountains Conservancy
RTCA	National Park Service Rivers, Trails and Conservation Assistance Program
SCAG	Southern California Association of Governments
SEA	Significant Ecological Area (Los Angeles County, Department of Regional Planning)
SHPO	State historic preservation officer
SMMC	Santa Monica Mountains Conservancy
SMMNRA	Santa Monica Mountains National Recreation Area
SP	State Park
SRS	Special Resource Study
TMDL	Total Maximum Daily Load (related to water pollutants)
USACOE	United States Army Corps of Engineers also U.S. Army Corps of Engineers
UNESCO	United Nations Educational, Scientific and Cultural Organization
USC	United States Code
USDA	United States Department of Agriculture
USFS	United States Forest Service, U.S. Forest Service, Forest Service
USFWS	United States Fish and Wildlife Service, U.S. Fish and Wildlife Service, or Fish and Wildlife Service
WCA	Watershed Conservation Authority
WPA	Works Progress Administration
WRP	Water Reclamation Plant

References

Alderson, J.M.

- 2011 Personal communication with Margie Steigerwald.

Allaback, Sarah and Susan Escherich

- 2003 National Register of Historic Places Multiple Property Documentation Form, Modern Architecture in the United States of America: Skyscrapers, Houses, Churches, College Buildings and Campuses, and Museums, 1923-1966, National Historic Landmark Theme Study. Prepared for the National Park Service.

Architectural Resources Group, Inc.

- 2013a *Historic Resources Survey Report, Encino-Tarzana Community Plan Area*. Prepared for the City of Los Angeles Department of City Planning Office of Historic Resources. Pasadena, CA.
- 2013b *Historic Resources Survey Report, Canoga Park- Winnetka- Woodland Hills-West Hills Community Plan Area*. Prepared for the City of Los Angeles Department of City Planning Office of Historic Resources. Pasadena, CA.
- 2013c *Historic Resources Survey Report, North Hollywood Valley Village Community Plan Area*. Prepared for the City of Los Angeles Department of City Planning Office of Historic Resources. Pasadena, CA.

Arts & Architecture

- 2014 "Case Study House Locations." Available on the Internet at <<http://www.artsandarchitecture.com/case.houses/houses.html>> (Accessed January 2014)

Axelrod, D.I.

- 1973 "History of the Mediterranean ecosystem in California." Pages 225-277 in F. di Castri and H. A. Mooney, editors. *Mediterranean ecosystems: origin and structure*. New York, NY: Springer-Verlag.

Bailey, Harry P.

- 1966 *The climate of southern California*. Berkeley, CA: University of California Press.

Barbour, Michael G., Todd Keeler-Wolf, and Allan A. Schoenherr

- 2007 *Terrestrial Vegetation of California (Third Edition)*. Berkeley, CA: University of California Press.

Bean, L.J., and C.R. Smith

- 1978 "Gabrielino." In R.F. Heizer, ed., *Handbook of North American Indians (California)*. pp. 538-549, Vol. 8. Washington, DC: Smithsonian Institution.

Beck, Warren A. and Ynez D. Haase

- 1974 *Historical Atlas of California*. Norman, OK: University of Oklahoma Press.

Bevil, Alexander D.

- 2007 *Santa Susana State Historic Park Cultural Resources Inventory: Historic Overview*. California State Parks Southern Service Center.

Bible, Karen, Marc Wanamaker and Harry Medved

- 2010 *Location Filming in Los Angeles*. Charleston, SC: Arcadia Publishing.

Billington, David P., Donald C. Jackson, and Martin V. Melosi

- 2005 *The History of Large Federal Dams: Planning, Design, and Construction*. Denver, CO. Prepared for Bureau of Reclamation, U.S. Army Corps of Engineers, and National Park Service.

Bilodeau, William L., Sally W. Bilodeau, Eldon M. Gath, Mark Osborne, and Richard J. Proctor

- 2007 "Geology of Los Angeles, California, United States of America." *Environmental & Engineering Geoscience*, Vol. XIII, No. 2, May 2007, pp. 99-160

Blackburn, T.C., and L.J. Bean

- 1978 "Kitanemuk." In R.F. Heizer, ed., *Handbook of North American Indians*. pp.564-569, Vol. 8. Washington, DC: Smithsonian Institution.

Bosley III, Edward R.

- 1978 *National Register of Historic Places, William R. Thorsen House, Berkeley, Alameda County, California, National Register # 78000646*. California Sigma Phi Alumni Association.

Bricker, Lauren, Robert Winter, and Janet Tearnen

- 1998 *National Register of Historic Places, Multiple Property Documentation Form, "Residential Architecture in Pasadena, CA 1895-1918: The Influence of the Arts and Crafts Period", Pasadena, Los Angeles County, California*.

Burbank [City of Burbank]

- 2012 *Burbank 2035 - Technical Background Report* (public review draft).

Burcham, L.T.

- 1957 *California Range Land: An Historic-Ecological Study of The Range Resource of California*. Davis, CA: University of California.

Bureau of Land Management

- 2013 *Proposed Bakersfield Resource Management Plan*. Bakersfield Field Office.
- 2011 *Draft South Coast Resource Management Plan*. Palm Springs-South Coast Field Office
- 1994 *South Coast Resource Management Plan*. Palm Springs-South Coast Field Office

Butowsky, Harry A.

- 1989 *Astronomy and Astrophysics: A National Historic Landmark Theme Study*. Washington, DC: National Park Service, U.S. Department of the Interior. Available on the Internet at <http://www.nps.gov/history/history/online_books/butowsky5/astro.htm>
- 1984 *Man in Space National Historic Landmark Theme Study*. Washington, DC: National Park Service, U.S. Department of the Interior.

California Coastal Commission

- 2003 Memorandum from John Dixon, Ph.D., Ecologist / Wetland Coordinator to Ventura Staff. Subject: Designation of ESHA in the Santa Monica Mountains. March 25, 2003.

California Coastal Conservancy

- 2001 *Southern California Wetland Recovery Project Regional Plan*. Available on the Internet at <<http://www.coastalconservancy.ca.gov/scwrp/>>

California Department of Conservation

- 2013 *Geologic Hazards - Landslides*. Available on the Internet at <http://www.consrv.ca.gov/cgs/geologic_hazards/landslides/Pages/Index.aspx>
- 2009 *Annual Report of California Oil, Gas, and Geothermal Production*. Available on the Internet at <http://www.conservation.ca.gov/dog/pubs_stats/annual_reports/Pages/annual_reports.aspx>

California Department of Forestry and Fire Protection

- 2012 Fire Perimeters (GIS data). Downloaded from <http://frap.fore.ca.gov/data/frapgisdata-sw-fireperimeters_download.php>

California Department of Transportation

- 1986 *Historic Bridge Inventory*. Sacramento, CA: California Department of Transportation.

California Department of Water Resources

- 2009 Bulletin 160-09: Integrated Water Management – South Coast (part of the *California Water Plan 2009 Update – Volume 3, Regional Reports*).
- 2003 Bulletin 118: Basins and Subbasins of the South Coast Hydrologic Region. Available on the Internet at <http://www.water.ca.gov/groundwater/bulletin118/south_coast.cfm>

California Geological Survey

- 2004 *Significant California Earthquakes*. Compiled from: T. Toppozada and others, 2000, *Epicenters of and areas damaged by M > 5 California earthquakes, 1800-1999* (CDMG Map Sheet 49); Updated (3/2004) with data from: Toppozada, T. R. and D. Branum (2002) “California M \geq 5.5 earthquakes, history and areas damaged”, in Lee, W. H., Kanamori, H. and Jennings, P., *International Handbook of Earthquake and Engineering Seismology*, International Association of Seismology and Physics of the Earth’s Interior; National Earthquake Information Center (<http://neic.usgs.gov/>); Nevada Bureau of Mines and Geology (<http://www.seismo.unr.edu/ftp/pub/updates/louie/graphics/brochure.html>); and loss information from C. Stover and J. Coffman, 1993, *Seismicity of the United States* (USGS Professional Paper 1527). Available on the Internet at <http://www.conservation.ca.gov/CGS/rghm/quakes/Pages/eq_chron.aspx>

California Herps

- 2013 “*Coluber flagellum piceus* - Red Racer (Red Coachwhip).” Available on the Internet at <<http://www.californiaherps.com/snakes/pages/m.f.piceus.html>> (Accessed November 18, 2013)

California Regional Water Quality Control Board

- 1994 *Water Quality Control Plan, Los Angeles Region: Basin Plan for the Coastal Watersheds of Los Angeles and Ventura Counties*. Available on the Internet at <http://www.swrcb.ca.gov/losangeles/water_issues/programs/basin_plan/index.shtml> (Accessed May 5, 2014)

California Resources Agency, San Gabriel and Lower Los Angeles Rivers and Mountains Conservancy [RMC], and Santa Monica Mountains Conservancy

- 2001 *Common Ground, from the Mountains to the Sea*. Available on the Internet at <http://rmc.ca.gov/plans/common_ground/Common%20Ground.pdf>

California Water Quality Monitoring Council

- 2013 “California Streams, Rivers and Lakes.” Available on the Internet at <http://www.mywaterquality.ca.gov/eco_health/> (Accessed July 18, 2013)

Calpo, Janice

- 2011 National Register of Historic Places , Arroyo Seco Parkway Historic District, Los Angeles-South Pasadena-Pasadena, Los Angeles County, California, National Register # 10001198. National Park Service, U.S. Department of the Interior.

[CBI] Conservation Biology Institute

- 2001 *On the Global and Regional Ecological significance of Southern Orange County: Conservation Priorities for a Biodiversity Hotspot*. Prepared by Wayne D. Spencer, Michael D. White, and Jerre Ann Stallcup. San Diego, CA.

[CDFG] California Department of Fish and Game (CDFG)

- 2012 *California Natural Diversity Database*. Available on the internet at <<http://www.dfg.ca.gov/bdb/html/cnddb.html>> (Accessed January 2012)
- 2011 California Natural Diversity Database Special Animals List, January 2011. Available on the Internet at <http://www.dfg.ca.gov/biogeodata/cnddb/plants_and_animals.asp>
- 2010 List of Vegetation Alliances and Associations. Sacramento, CA: Vegetation Classification and Mapping Program, California Department of Fish and Game.

- 2008 California wildlife habitat relationships system, version 8.2. Available on the Internet at <<http://www.dfg.ca.gov/bioeodata/cwhr/>> (Accessed December 2013)
- 2007 *California Wildlife: Conservation Challenges (Comprehensive Wildlife Conservation Strategy)*. Available on the Internet at <<http://www.dfg.ca.gov/habitats/WDP/report.html>> (Accessed March 2007)

[CDPR] California Department of Parks and Recreation

- 2014 *Survey on Public Opinions and Attitudes on Outdoor Recreation in California 2012*. Available on the Internet at <<http://www.parks.ca.gov/pages/795/files/2012%20spoa.pdf>>
- 2013 California Off-Highway Adventure Map. Sacramento, CA: California Department of Parks and Recreation, Off-Highway Motor Vehicle Recreation Division.
- 2012 *Los Angeles State Historic Park Master Development Plan Final EIR*. California Department of Parks and Recreation.
- 2011 *California Recreational Trails Plan*. Sacramento, CA: California State Parks, Planning Division, Statewide Trails Section. Available on the Internet at <www.parks.ca.gov/trails/trailsplan>
- 2009 *California Outdoor Recreation Plan 2008*. Available on the Internet at <<http://www.parks.ca.gov/pages/795/files/2009-2014%20corp.pdf>>
- 2008 *Santa Susana Pass State Historic Park Preliminary General Plan/Final EIR*.
- 2002 *California Recreation Trails Plan, Phase 1*. Sacramento, CA: Department of Parks and Recreation Planning Division, Statewide Trails Office.
- 1988 *Five Views: An Ethnic Historic Site Survey for California*. December: n.p., 1988. History. ParkNet National Park Service.

Charles and Ray Eames House Preservation Foundation

- 2014 "Visiting the Eames House." Available on the Internet at <<http://www.eamesfoundation.org/>> (Accessed January 2014)

Charleton, James H.

- 1986 *Recreation in the United States: National Historic Landmark Theme Study*. Washington, DC: National Park Service, U.S. Department of the Interior.

Chavez, D., and N. Knap

- 2004 "Management problems of and strategies for off-highway vehicle management: National Forests in California." Unpublished Report. U.S. Department of Agriculture, Forest Service.

Chawner, W.D.

- 1935 "Alluvial Fan Flooding: The Montrose, California, Flood of 1934." *Geographical Review* 25.2: 255-263.

Chester, Tom

- 2004 San Gabriel Mountains: The Waterfalls. Available on the Internet at <<http://tchester.org/sgm/lists/waterfalls.html>>

Christian, Ralph J.

- 1977 National Register of Historic Places, Norman No. 1 Oil Well, Neodesha, Wilson County, Kansas, National Register # 74000846. American Association for State and Local History.
- 1972 National Register of Historic Places, E.W. Marland Mansion, Ponca City, Kay County, Oklahoma, National Register # 73001561. American Association for State and Local History.

The City Project

- 2011 *Healthy Parks, Schools and Communities: Mapping Green Access and Equity for Southern California Policy Report*. Prepared by Robert García and Seth Strongin. Available on the Internet at <http://www.mapjustice.org/images/Southern_California_Report_Final_Medium_Res.2.pdf>

[CNLM] Center for Natural Lands Management

- 2004a Pixley Vernal Pools. Available on the Internet at <http://www.cnlm.org/cms/index.php?option=com_content&task=view&id=66&Itemid=114> (Accessed February 2014)
- 2004b Sand Ridge Preserve. Available on the Internet at <http://www.cnlm.org/cms/index.php?option=com_content&task=view&id=68&Itemid=214> (Accessed February 2014)

Cogstone Resource Management, Inc.

- 2003 *The History and Archaeology of the Zanja Madre, Los Angeles, California*. Los Angeles, CA.

Conkling, Roscoe P. and Margaret B. Conkling

- 1947 *The Butterfield Overland Mail, 1857-1869: Its Organization and Operation Over the Southern Route to 1861; Subsequently Over the Central Route to 1866; and Under Wells, Fargo and Company in 1869*. Glendale, CA: A.H. Clark Co.

Cooper, D.S.

- 2010 *Griffith Park Rare Plant Survey*. Prepared for the Griffith Park Natural History Survey and the California Native Plant Society.

Crain, Benjamin J. and Jeffrey W. White

- 2011 "Categorizing locally rare plant taxa for conservation status." *Biodiversity Conservation* Vol. 20, p 451-463.

Crawford, Jeff, et al.

- 2000 *Water Conveyance Systems in California: Historic Context Development and Evaluation Procedures*. Davis, CA: JRP Historical Consulting Services.

Crespi, Juan, trans. Alan K. Brown

- 2001 *A Description of Distant Roads: Original Journals of the First Spanish Expedition into California, 1769-1770*. San Diego, CA : San Diego State University Press.

[CSP] California State Parks

- 2005 *Santa Susana Pass State Historic Park Cultural Resources Inventory - Archeology*. Prepared by Marla Mealy and Natalie Brodie, California State Parks Southern Service Center: San Diego, CA.

Cushman, J.A. and J.H. McMasters

- 1936 "Middle Eocene Foraminifera from the Llajas Formation, Ventura County, California." *Journal of Paleontology* 10(6):497-517.

Dallas, Herb

- 2013 "Reevaluating the 'Little Sycamore' Site." Paper presented at Society for California Archaeology 2013 annual meeting, Berkeley, CA.

Daszak, P., A.A. Cunningham, and A.D. Hyatt.

- 2000 "Emerging infectious diseases of wildlife - threats to biodiversity and human health." *Science* 287: 443-449.

David, L.R.

- 1939 "Upper Miocene fishes from the Santa Monica Mountains, California." *Geological Society of America Bulletin* 50(12, part 2):1972.

- Davis, F.W., D.M. Stoms, A.D. Hollander, K.A. Thomas, P.A. Stine, D. Odionn, M.I. Borchert, J.H. Thorne, M.V. Gray, R.E. Walker, K. Warnter, and J. Graae
1998 *The California Gap Analysis Project – Final Report*. Santa Barbara, CA: University of California. Available on the Internet at <<http://gis.ucsc.edu/Projects/VWP/report.pdf>>
- Davis, F.W., and J. Michaelsen
1995 “Sensitivity of fire regime in chaparral ecosystems to climate change.” Pages 435-456 in J. M. Moreno, W. O Oechel, editor. *Global change and Mediterranean-type ecosystems*. New York, NY: Springer Verlag.
- Davis, F.W., P.A. Stine and D.M. Stoms
1994 “Applications of Remote Sensing and Geographic Information Systems for the Distribution and Conservation Status of Coastal Sage Scrub in Southwestern California.” *Journal of Vegetative Science* 5(5): 743-756.
- Delaney, Katy, Santa Monica Mountains National Recreation Area
2014 Personal communication with Katelyn Walker, National Park Service, Pacific West Region, March 2014.
- Dennison, P.E. and M.A. Moritz
2009 “Critical live fuel moisture in chaparral ecosystems: a threshold for fire activity and its relationship to antecedent precipitation.” *International Journal of Wildland Fire* 18:1021-1027.
- Designory, The (marketing and communications agency)
2011 *Customer Insight and Brand Assessment Findings, SMMNRA Brand and Marketing Project*.
- Dibblee, T.W., Jr.
1982 “Geology of the San Gabriel Mountains, Southern California.” In Fife, D.L., and Minch, J.A., eds. , *Geology and mineral wealth of the California Transverse Ranges*. Santa Ana, CA: South Coast Geological Society Annual Symposium and Guidebook, no. 10.
- Durrell, C.
1954 “Geology of the Santa Monica Mountains, Los Angeles and Ventura Counties [California]”, in Jahns, R.H., ed., *Geology of southern California*. California Division of Mines Bulletin 170, map sheet 8.
- Ecological Society of America. Committee on Preservation of Natural Conditions
1926 *Naturalist's Guide to the Americas*. Baltimore, MD: Williams & Wilkins publishers.
- Edelman, Paul, Santa Monica Mountains Conservancy
2011 Personal communication with Margie Steigerwald, National Park Service, Pacific West Region, November 2011.
- Engelhardt, Zephyrin
1927a *San Gabriel Mission and the Beginnings of Los Angeles*. San Gabriel, CA: Mission San Gabriel.
1927b *San Fernando Rey: The Mission of the Valley*. Chicago, IL: Franciscan Herald Press.
- Faber, Phyllis M., Ed Keller, Anne Sands, and Barbara M. Massey
1989 “The Ecology of Riparian Habitats of the Southern California Coastal Region: A Community Profile.” *U.S. Fish and Wildlife Service Biological Report* Vol. 85, No. 7.27.
- Fages, Pedro
1919 “An historical, political, and natural description of California.” Translated by Herbert I. Priestley. *Catholic Historical Review* Vol. 4, no. 4 (Jan. 1919); v. 5, no. 1
- [FMMP] Farmland Mapping and Monitoring Program, California Department of Conservation Division of Land Resource Protection
2010 *Important Farmland Data Availability*. GIS data. Available on the Internet at <http://redirect.conservation.ca.gov/DLRP/fmmp/product_page.asp>

- 2008 *California Farmland Conversion Report 2004-2006*. Available on the Internet at <http://redirect.conservation.ca.gov/DLRP/fmmp/county_info_results.asp>
- 2000 *California Farmland Conversion Report 1998-2000*. Available on the Internet at <http://redirect.conservation.ca.gov/DLRP/fmmp/county_info_results.asp>
- Feinberg, Marjorie Shafton
- 1976 Rim of the Valley Park Proposals for a Green Belt Around the San Fernando Valley. Master's thesis, California State University, Northridge.
- Fogelson, Robert M.
- 1967 *The Fragmented Metropolis: Los Angeles, 1850-1930*. Berkeley, CA: University of California Press.
- Fritsche, A. E.
- 2012 Table sent to Margie Steigerwald, *Correlation of Formation Names used in the Santa Monica Mountains Area*.
- 2011 Personal communication with Margie Steigerwald, National Park Service, Pacific West Region, October 2011.
- 1993 "Middle Tertiary stratigraphic terminology for the Santa Monica Mountains, southern California." in Weigand, P.W., A.E. Fritsche, and G.E. Davis, editors. *Depositional and volcanic environments of middle Tertiary rocks in the Santa Monica Mountains, southern California*. Society of Economic Paleontologists and Mineralogists, Pacific Section, Bakersfield, CA. Book 72, pp1-12.
- Fritsche, A.E., G.E. Taylor, and K.A. Kappeler
- 1983 "Petrology and depositional environments of the middle Miocene Calabasas Formation at Big Mountain, Ventura County, California." in Squires, R. L. and M. V. Filewicz, editors. *Cenozoic geology of the Simi Valley area*. Society of Economic Paleontologists and Mineralogists, Pacific Section, Los Angeles, CA, pp191-202.
- Fritsche, A.E., P.W. Weigand, I.P. Colburn, and R.L. Harma
- 2001 Society for Sedimentary Geology, *Transverse/Peninsular Ranges connection – evidence of the incredible Miocene rotation*, in Dunne, G., and Cooper, J., compilers, *Geologic excursions in southwestern California: SEPM (Society for Sedimentary Geology), Pacific Section, book 89*, p. 101-146. Available on the Internet at <<http://www.csun.edu/~hcge0007/ninelines.html>>
- Gamble, Lynn, Glenn Russell, Chester King, and Jean Hudson
- 1996 *Distribution of Wealth and Other Items at the Malibu Site, CA-LAN-264*. Prepared for California Department of Parks and Recreation. American Indian Studies Center and Institute of Archeology, University of California, Los Angeles. Sacramento, CA.
- Garcia, Robert, Erica S. Flores, and Julie Ehrlich
- 2004 *The Cornfield and the Flow of History: People, Place, and Culture: A Report on the Park in the Cornfield to the California Department of Parks and Recreation*. The City Project and the Center for Law in the Public Interest. Los Angeles, CA.
- Gebhard, David and Robert Winter
- 1985 *Architecture in Los Angeles: A Complete Guide*. Salt Lake City, UT: Gibbs M. Smith - Peregrine Smith Books.
- Goode, Suzanne, California Department of Parks and Recreation
- 2011 Personal communication with Margie Steigerwald, National Park Service, Pacific West Region, October 2011.
- Gonzalez, Matthew and Kathy Anderson
- 2013 *Griffith Park Performing Arts Center: Phase I Cultural Resources Study*. Prepared for the City of Los Angeles Department of Recreation and Parks by ESA. Los Angeles, CA.

Gottlieb, Robert

2007 *Reinventing Los Angeles: Nature and Community in the Global City*. Cambridge, MA: The MIT Press.

Goudey, C.B. and D.W. Smith

1994 *Ecological units of California: subsections*. Washington, DC: USDA Forest Service, Pacific Southwest Region and Natural Resources Conservation Service.

GPA Consulting, Inc.

2013 *Historic Resources Survey Report , Bel Air – Beverly Crest Community Plan Area*. Prepared for the City of Los Angeles Department of City Planning Office of Historic Resources. El Segundo, CA.

Grant, Campbell

1978 “Chumash.” In R.F. Heizer, ed. *Handbook of North American Indians*. pp.505-519, Vol. 8. Washington, DC: Smithsonian Institution.

Grimes, Theresa

2008 National Register of Historic Places, Pasadena Arroyo Parks and Recreation District, Pasadena, Los Angeles County, California, National Register # 08000579. National Park Service, U.S. Department of the Interior.

Gruen, J. Philip and Portia Lee

1999 Arroyo Seco Parkway (HAER No. CA-265). Historic American Engineering Record. Available on the Internet at <<http://www.arroyoseco.org/HAERASP.pdf>> (Accessed July 3, 2012)

Gumprecht, Blake

1999 *The Los Angeles River: Its Life, Death, and Possible Rebirth*. Baltimore, MD: Johns Hopkins University Press.

Hafen, L.R.

1923 “Butterfield’s Overland Mail.” *California Historical Society Quarterly* 2.3 (1923): 211-223.

Hanes, T.L., R.D. Friesen, and K. Keane

1989 “Alluvial scrub vegetation in coastal southern California.” In Abell, Dana (Tech. Coordinator) *Proceedings of the California Riparian Systems Conference: Protection, Management, and Restoration for the 1990s; September 22-24, 1988*; Davis, California. Berkeley, CA: Pacific Southwest Forest and Range Experiment Station, Forest Service, U.S. Department of Agriculture.

Heizer, Robert and William C. Sturtevant

1981 *Handbook of North American Indians, Volume 8: California*. Washington, DC: Smithsonian Institution.

Hewlett, Richard G. and Jack M. Holl

1989 *Atoms for Peace and War, 1953-1961: Eisenhower and the Atomic Energy Commission*. Berkeley, CA: University of California Press.

Hickman, J.C. (ed.).

1993 *The Jepson Manual: Vascular Plants of California*. Berkeley, CA: University of California Press.

Hise, Greg, and William Deverell, eds.

2000 *Eden by Design: The 1930 Olmsted-Bartholomew Plan for the Los Angeles Region*. Berkeley, CA: University of California Press.

Historic Resources Group

2007 National Historic Landmark, Eames House, Pacific Palisades, Los Angeles County, California, National Register # 06000978. Prepared by Christy Johnson McAvoy, Jennifer Minasian Trotoux, and Kari Michele Fowler.

2013a *Historic Resources Survey Report, Sherman Oaks - Studio City - Toluca Lake - Cahuenga Pass*. Prepared for the City of Los Angeles Department of City Planning Office of Historic Resources. Pasadena, CA.

- 2013b *Historic Resources Survey Report, Brentwood – Pacific Palisades Community Plan Area*. Prepared for the City of Los Angeles Department of City Planning Office of Historic Resources. Pasadena, CA.
- Historic Resources Group and Galvin Preservation Associates
- 2012 *Historic Resources Survey Report, Northeast Los Angeles River Revitalization Area*. Prepared for the City of Los Angeles Community Redevelopment Agency. Pasadena, CA.
- Hlava, Diane
- 1985 National Register of Historic Places, Robert R. Blacker House, Pasadena, Los Angeles County, California, National Register # 86000147. Pasadena Heritage.
- Howell, J.T.
- 1957 “The California flora and its province.” *Leaflets Western Botany*: 133-138
- Howell, D.G., C.J. Stuart, J.P. Platt, and D.J. Hill
- 1974 “Possible strike-slip faulting in the southern California continental borderland.” *Geology*, v. 2, p 93-98.
- Hoyt, W.G., and H.C. Troxell
- 1934 “Forests and Stream Flow.” *Proceedings of the American Society of Civil Engineers* 99: 1-111.
- Hundley, Norris, Jr.
- 1992 *The Great Thirst: Californians and Water, 1770s-1990s*. Berkeley, CA: University of California Press
- Jacobsen, A.L., S.D. Davis, and S.I. Fabritius
- 2004 “Fire frequency impacts non-sprouting chaparral shrubs in the Santa Monica Mountains of southern California.” Pages 1-5 in *10th Medecos Conference*. Millpress, Rotterdam, Rhodes, Greece.
- Jennings, C.W.
- 1994 Fault activity map of California and adjacent areas: California Division of Mines and Geology, California Geologic Data Map Series, Map No. 6, scale 1:750,000.
- Johnson, John R.
- 2006 *Ethnohistory Overview for the Santa Susana Pass State Historic Park Cultural Resources Inventory Project*. Prepared for California Department of Parks and Recreation. Santa Barbara Museum of Natural History. Santa Barbara, California.
- Johnston, Bernice Eastman
- 1962 *California’s Gabrielino Indians*. Los Angeles, CA: Southwest Museum.
- Jones, Terry L. and Kathryn A. Klar (eds)
- 2007 *California Prehistory: Colonization, Culture and Complexity*. Lanham, MD: Altamira Press.
- Jones, D.L., M.C. Blake Jr., and C. Rangin
- 1976 “The four Jurassic belts of northern California and their significance to the geology of the southern California Borderland.” in Howell, D.G., ed., *Aspects of the geologic history of the California Continental Borderland*. Pacific Section, American Association of Petroleum Geologists, Miscellaneous Publication 24, pp 343-362.
- Juhasz, Thomas
- 2011 *90-Day Protocol Survey Report for U.S. Fish and Wildlife Service Listed Vernal Pool Branchiopods*. Santa Clarita Vernal Pool Project, City of Santa Clarita, California.
- Kamerling, M.J., and B.P. Luyendyk
- 1979 “Tectonic rotations of the Santa Monica Mountains region, western Transverse Ranges, California, suggested by paleo magnetic vectors.” *Geological Society of America*, part 1, v 90., p 331-337.

Kaplan, Sam Hall

- 1987 *L.A. Lost and Found: An Architectural History of Los Angeles*. New York, NY: Crown Publishers.

Karhl, William

- 1982 *Water and Power: The Conflict Over Los Angeles' Water Supply in the Owens Valley*. Berkeley, CA: University of California Press.

Keeler-Wolf, T., J. Evans, J. Christian, R. Taylor, E. Reyes, and J. Tizler

- 2007 "A vegetation classification for the Santa Monica Mountains." in *Flora and Ecology of the Santa Monica Mountains: Proceedings of the 32nd annual Southern California Botanists symposium*, ed. D.A. Knapp, 131-158. Southern California Botanists Special Publication No. 4, Fullerton California.

Keeley, Jon E.

- 2007 "Chaparral and Fire." *Fremontia* 35 no. 4: 16-21.
- 2002 "Native American impacts on fire regimes of the California coastal ranges." *Journal of Biogeography* 29:303-320.

Keeley, J.E., T.J. Brennan

- 2012 "Fire-driven alien invasion in a fire-adapted ecosystem." *Oecologia* 169:1043-1052.

Keeley, J.E. and F.W. Davis

- 2007 "Chaparral." In *Terrestrial Vegetation of California*, 3rd ed. Barbour, Keeler-Wolf, and Shoenherr editors. Berkeley, CA: University of California Press.

Kew, W. S.

- 1924 "Geology and oil resources of a part of Los Angeles and Ventura counties, California." *U.S. Geological Survey, Reston, VA. Bulletin* 753. Available on the Internet at <<http://pubs.er.usgs.gov/publication/b753>> (Accessed December 2011)

King, Chester

- 2012 *Archeological Excavations at Talepop (CA-LAN-229), in 2012 and 2011, a Chumash Village in the Santa Monica Mountains National Recreation Area, Los Angeles County, California*. Draft submitted to National Park Service, Santa Monica Mountains National Recreation Area, Thousand Oaks, CA.
- 1990 *Evolution of Chumash Society: A Comparative Study of Artifacts Used in Social System Maintenance in the Santa Barbara Channel Region before A.D. 1804*. New York, NY: Garland Press.

King, Chester and Thomas C. Blackburn

- 1978 "Tatavium." In R. Heizer, ed. *Handbook of North American Indians*. Vol. 8. Washington DC: Smithsonian Institution. PP-535-537.

King, Chester, and Jeff Parsons

- 2010 *Overview of the History of American Indians in the Santa Monica Mountains*. Topanga Anthropological Consultants, Topanga. Draft submitted to National Park Service, Santa Monica Mountains National Recreation Area, Thousand Oaks, CA..

King, Chester and Jeff Parsons

- 1999 *Malu'liwini: Archaeological record of Settlement and Activity in the Simi Hills (First Draft)*. Prepared for the Santa Monica Mountains and Seashore Foundation. Topanga Anthropological Consultants.

Knight, Albert

- 2001 *Rock Art of the Santa Monica and the Santa Susana Mountains*. Santa Barbara, CA: Santa Barbara Department of Natural History, Department of Anthropology.

- Koch, A.L., V.L. Santucci, and T.R. Weasma
2004 *Santa Monica Mountains National Recreation Area paleontological survey*. NPS/NRGRD/GRDTR-04/01. National Park Service, Geologic Resources Division, Denver, CO.
- Kroeber, A.L.
1976 (1925) *Handbook of the Indians of California*. New York, NY: Dover Publications.
- Lander, E.B.
1983 "Continental vertebrate faunas from the upper member of the Sespe Formation, Simi Valley, California, and the terminal Eocene event." in Squires, R. L. and M. V. Filewicz, editors. *Cenozoic geology of the Simi Valley area*. Society of Economic Paleontologists and Mineralogists, Pacific Section, Los Angeles, CA, pp142-154
- Lander, E.B., compiler
2011 "Stratigraphy, biostratigraphy, biochronology, geochronology, magnetostratigraphy, and plate tectonic history of the early Middle Eocene to late Early Miocene Sespe, Vaqueros, and lower Topanga formations, east-central Santa Monica Mountains, Los Angeles County, southern California." Natural History Museum of Los Angeles County, Los Angeles, CA. Western Association of Vertebrate Paleontologists 2011 annual meeting field trip volume and guidebook.
- Lander, E.B., D.P. Whistler, J.M. Alderson, E.S. Anderson, S.I. Walker, and C.B. Anderson
2001 "Late Oligocene and early Miocene land mammal biostratigraphy, Piuma Member, Sespe Formation, and Fernwood Member, Topanga Canyon Formation, Saddle Peak area, central Santa Monica Mountains, Los Angeles County, California." *Abstracts with Programs - Geological Society of America* 33(3):43.
- Lander, E.B., D.P. Whistler, J.M. Alderson, L.H. Fisk, S.I. Walker, E.S. Anderson, and C.B. Anderson
2001 "Late Oligocene to early or middle Miocene continental vertebrate, marine invertebrate, and land plant biostratigraphy of the Sespe, Vaqueros, and Topanga Canyon formations, central Santa Monica, Los Angeles County, California." *Paleobios* 21(supplement to 1):6-7.
- Lander, Bruce, Paleo Environmental Associates
2011 Personal communication with Margie Steigerwald, National Park Service, Pacific West Region, December 2011.
- Landis, Betsey, California Native Plant Society
2011 Personal communication with Margie Steigerwald, National Park Service, Pacific West Region, October 2011.
- 2007 Surveys and observations of Braunter's milkvetch (*Astragalus braunterii*) 2006 and 2007. Contract 801816M190 & 801816M190/0001, U.S. Fish & Wildlife Service, Prepared for Christine Hamilton, U.S. Fish and Wildlife, Region 5.
- Loarie, Scott R, Benjamin E. Carter, Katharine Hayhoe, Sean McMahon, Richard Moe, Charles A. Knight, and David D. Ackerly
2008 "Climate change and the future of California's endemic flora." *PLoS One* 3: 6. 06.
- Lochbaum, David A.
2006 "An Assessment of Potential Pathways for Release of Gaseous Radioactivity Following Fuel Damage During Run 14 at the Sodium Reactor Experiment." The Santa Susana Field Laboratory Advisory Panel, The Tides Center, San Francisco, CA.
- Los Angeles [City of Los Angeles]
2009 *Citywide Community Needs Assessment*. Prepared by Mia Lehrer+Associates, Los Angeles, CA.
- [LACDBH] Los Angeles County Department of Beaches and Harbors
2013 Beach Guide – Los Angeles County. Available on the Internet at <<http://beaches.lacounty.gov/wps/portal/dbh/beaches/>>

[LADRP] Los Angeles County Department of Regional Planning

2012a *Draft General Plan 2035: Technical Appendix E.*

2012b *Santa Clarita Valley Area Plan: One Valley One Vision.* Available on the Internet at <http://planning.lacounty.gov/assets/upl/project/ovov_2012-fulldoc.pdf>

2000 *Los Angeles County Significant Ecological Areas Update Study 2000.* Prepared by PCR Services Corporation, Frank Hovore & Associates, FORMA Systems. (Includes the Biological Resources Assessments of the Proposed San Gabriel Canyon, Santa Clara River, Santa Susana Mountains, and Santa Monica Mountains Significant Ecological Areas).

[LADPW] Los Angeles County Department of Public Works

2013 County of Los Angeles Department of Public Works Spreading Grounds Facilities. Available on the Internet at <<http://www.ladpw.org/wrd/SpreadingGround/SpreadingGroundMap.pdf>>

2006 *Greater Los Angeles County Region Integrated Resource Water Management Plan.* Available on the Internet at <<http://www.ladpw.org/wmd/irwmp/>>

2005 *Santa Clara River Enhancement and Management Plan.* Prepared By: AMEC Earth & Environmental.

2003 Water Facts and Figures. Available on the Internet at <https://www.ladwp.com/ladwp/faces/ladwp/aboutus/a-water/a-w-factandfigures?_adf.ctrl-state=74cljhznh_4&_afLoop=1019917857074042>

[LADWP] Los Angeles Department of Water and Power

2010 *Urban Water Management Plan.*

[LADWP & LADFCDD] Los Angeles County Department of Public Works and Los Angeles County Flood Control District

2013 *Sediment Management Strategic Plan 2012-2013.*

Lepczyk, C.A., Mertig, A.G., and Liu, J.

2003 "Landowners and cat predation across rural-to-urban landscapes." *Biological Conservation* 115(2): 191-201.

LSA Associates, Inc.

2011 *Historic Resources Survey, Cornfield Arroyo Seco Specific Plan Area.* Prepared for the City Of Los Angeles, Los Angeles County, California

2004 *Final Wildlife Corridor Assessment Ventura State Route 118.* Prepared for Caltrans District 7 Division of Environmental Planning.

MacKechnie, Christopher

2013 "Lessons Learned: The Story of the ParkLINK Shuttle." Available on the Internet at <http://publictransport.about.com/od/System_Profiles/a/Lessons-Learned-The-Story-Of-The-Parklink-Shuttle.htm> (Accessed September 5, 2013)

Magney, David

2011 Personal communication with Margie Steigerwald, National Park Service, Pacific West Region, December 2011.

Makinson, Randell L.

1970 The Gamble House. Historic American Buildings Survey (HABS CA 1981). U.S. Department of the Interior, National Park Service.

Masumoto, Marie

2013 "Griffith Park (Detention Facility)." *Densho Encyclopedia.* Available on the Internet at <[http://encyclopedia.densho.org/Tuna%20Canyon%20\(detention%20facility\)/>](http://encyclopedia.densho.org/Tuna%20Canyon%20(detention%20facility)/>) (Accessed June 26, 2013)

- McCawley, William
1996 *The First Angelinos: The Gabrielino Indians of Los Angeles*. Banning, CA: Malki-Ballena Press.
- McPhee, John
1982 *The Control of Nature*. New York, NY: Farrar, Straus, Giroux.
- Meady, Marla and Natalie Brodie
2005 *Santa Susana Pass State Historic Park Cultural Resources Inventory, Archaeology*. San Diego, CA: California State Parks Southern Service Center.
- Mensing, S.A., J. Michaelsen, and R. Byrne
1999 "A 560-Year Record of Santa Ana Fires Reconstructed from Charcoal Deposited in the Santa Barbara Basin, California." *Quaternary Research* 51:295-305.
- Merriam, R.H.
1968 "Geologic reconnaissance of northwest Sonora." in Dickinson, W.R., and Grantz, A., *Proceedings of conference on geologic problems of San Andreas fault system*. Stanford University Publication, Geological Sciences, v. 11, p. 287.
- Merrick, John J.
1976 Humaliwo: National Register of Historic Places, Humaliwo, Malibu vicinity, Los Angeles County, California, National Register # 76000492. National Park Service, U.S. Department of the Interior.
- Miller, Crane S. and Richard S. Hyslop
1983 *California: The Geography of Diversity*. Palo Alto, CA: Mayfield Publishing Company.
- Moratto, M.J.
1984 *California Archaeology*. Orlando, FL: Academic Press.
- Morton, Paul K.
1982 "Mineral deposits of the Transverse Ranges." In *Geology and Mineral Wealth of the Transverse Ranges*. Santa Ana, CA: South Coast Geological Society.
- Moruzzi, Peter
2013 National Register of Historic Places, Multiple Property Documentation Form, The Case Study House Program, 1945-1966. Los Angeles Conservancy Modern Committee.
- Mount, J.D.
1971 "A late Miocene flora from the Solemint Area, Los Angeles County, California." *Bulletin of the Southern California Paleontological Society* vol. 3, no. 3, pp 1-4 & 8.
- Mount Wilson Observatory
2007 Information extracted from Mount Wilson Observatory Internet site <<http://www.mtwilson.edu/>> (Accessed in 2007)
- [MTA] Los Angeles County Department of Transportation
2006 *Los Angeles County Metropolitan Transportation Authority (Metro) Bicycle Transportation Strategic Plan*. Available on the Internet at <http://www.metro.net/board/Items/2006/02_February/20060215P&PItem6%20Atta.pdf>
- Muir, John
1894 *The Mountains of California*. New York, NY: The Century Company.
- Mullally, Don
1992 "Distribution and Environmental Relations of California Black Walnut (*Juglans californica*) in the Eastern Santa Susana Mountains, Los Angeles County." *Crossosoma* 18(2).

Murphy, Roy and Julia Murphy

1985 *The San Gabriel Mountains*. Arcadia, CA: Big Santa Anita Historical Society.

Myers, Norman, Russell A. Mittermeier, Cristina G. Mittermeier, Gustavo A.B. da Fonseca, and Jennifer Kent

2000 "Biodiversity hotspots for conservation priorities." *Nature* 403, 853-858 (24 February 2000).

[NASA] National Aeronautics and Space Administration

2014 *Record of Decision, Environmental Impact Statement for Proposed Demolition and Environmental Cleanup Activities at Santa Susana Field Laboratory, Ventura County, CA.*

2013 *Draft Environmental Impact Statement for Proposed Demolition and Environmental Cleanup Activities at Santa Susana Field Laboratory, Ventura County, CA.*

2009 *Historic Resources Survey and Assessment of the NASA Facility at Santa Susana Field Laboratory, Ventura County, California*. Prepared by Archaeological Consultants, Inc. and Weitze Research: Stockton, CA.

n.d. Visitor Information: A Look Back at Space Mission Engine Testing at the Santa Susana Field Laboratory. Brochure.

[NOAA] National Oceanic and Atmospheric Administration

2011 *5-Year Review: Summary and Evaluation of Southern California Coast Steelhead Distinct Population Segment*. Available on the Internet at <http://www.nmfs.noaa.gov/pr/pdfs/species/sc_steelhead_5yearreview.pdf>

2005 "Endangered and Threatened Species; Designation of Critical Habitat for Seven Evolutionarily Significant Units of Pacific Salmon and Steelhead in California." *Federal Register* 70: 52488-52627

National Research Council

1982 *Storms, Floods, and Debris Flows in Southern California and Arizona, 1978 and 1980: Proceedings of Symposium, September 17-18, 1980*. Washington, DC: National Academy Press.

[NPS] National Park Service

2014 Unpublished analysis of fire history from 1925 through 2013 for Rim of the Valley Corridor study area (Robert Taylor).

2013a *Assessment and Recommendations for Landscape-Scale Conservation through Partnerships and Collaboration*. Pacific West Region, San Francisco, CA. Prepared by Angela Whitney.

2013b *Channel Islands National Park Draft General Management Plan / Wilderness Study /Environmental Impact Statement*.

2013c Fire History (GIS data). Santa Monica Mountains National Recreation Area

2013d "Paleontology." in *Coastal Southern California Science and Learning*. Available on the Internet at <<http://www.mednscience.org/research/samo/paleontology>> (Accessed July 15, 2013)

2013e *Proposed Butterfield Overland Trail –Statement of Significance* (draft). Prepared by Frank Norris, Historian. National Trails Intermountain Region, Santa Fe, New Mexico.

2013f *San Gabriel Watershed and Mountains Draft Special Resource Study and Environmental Assessment*. Available on the Internet at <<http://parkplanning.nps.gov/document.cfm?documentID=43639>>

2013g *Santa Monica Mountains Community Wildfire Protection Plan*. Available on the Internet at <http://www.nps.gov/samo/parkmgmt/upload/SMM_CWPP_o2MAY2012_FINAL_v3.pdf> (Accessed August 24, 2014)

2012a *A Call to Action: Preparing for a Second Century of Stewardship and Engagement*. Washington, DC: National Park Service, U.S. Department of the Interior.

- 2012b Saddle Rock Ranch Pictograph Site, Malibu, Los Angeles County, California: Determined Eligible for Designation as a National Historic Landmark. Available on the Internet at <http://www.nps.gov/nhl/DOE_dedesignations/saddlerock.htm> (Accessed July 29, 2012)
- 2012C *Santa Monica Mountains National Recreation Area Long-Range Interpretive Plan.*
- 2011 *Economic Benefits to Local Communities from National Park Visitation and Payroll, 2010.* Department of Community, Agriculture, Recreation and Resource Studies, Michigan State University. Prepared by Daniel J. Stynes. Fort Collins, Colorado. Natural Resource Report NPS/NRSS/EQD/NRR—2011/481
- 2010 *Manhattan Project Sites Special Resource Study and Environmental Assessment.*
- 2008 *Geologic Resource Evaluation Scoping Summary Santa Monica Mountains National Recreation Area, CA.*
- 2006a *Management Policies: The Guide to Managing the National Park System.* Washington, DC: National Park Service, U.S. Department of the Interior.
- 2006b *Record of Decision, Final Environmental Impact Statement, Fire Management Plan, Santa Monica Mountains National Recreation Area.*
- 2005 *Final Environmental Impact Statement for a Fire Management Plan, Santa Monica Mountains National Recreation Area, California.*
- 2002 *Santa Monica Mountains National Recreation Area General Management Plan.* (Record of Decision March 5, 2003)
- 1995 *Route 66 Special Resource Study.* Denver, CO: Denver Service Center.
- 1990 *Natural History in the National Park System and on the National Registry of Natural Landmarks.* Natural Resource Report NPS NR NRTR-90 03.
- 1987a National Register of Historic Places Inventory, Harvard Stadium, Boston, Suffolk County, Massachusetts, National Register # 87000757. Prepared by James H. Charleton.
- 1987b National Register of Historic Places, Yale Bowl, New Haven, New Haven County, Connecticut, National Register # 87000756. Prepared by James H. Charleton.
- 1986a *Architecture in the Parks: A National Historic Landmark Theme Study.* Prepared by Laura Soulliere Harrison.
- 1986b *Recreation in the United States: National Historic Landmark Theme Study.* Prepared by James H. Charleton.
- 1984a *Man in Space National Historic Landmark Theme Study.* Prepared by Harry A. Butowsky.
- 1984b National Register of Historic Places, Los Angeles Memorial Coliseum, Los Angeles, Los Angeles County, California, National Historic Landmark # 84003866 . Prepared by James H. Charleton.
- 1979 National Register of Historic Places, Lucas Gusher, Spindletop Oil Field, Beaumont vicinity, Jefferson County, Texas, National Register # 66000818. Prepared by Patricia Heintzelman.
- 1978 National Register of Historic Places, Drake Oil Well, Titusville vicinity, Venango County, Pennsylvania, National Historic Landmark # 66000695. Prepared by Cecil McKithan.
- 1976 National Register of Historic Places, John D. Rockefeller Estate, Mt. Pleasant, Westchester County, New York, National Register # 76001290. Prepared by James Sheire.
- 1966 *Commerce and Industry Theme Study.* Washington, DC: National Park Service, U.S. Department of the Interior.

NatureServe

- 2013 *NatureServe Conservation Status*. Available on the Internet at <<http://explorer.natureserve.org/ranking.htm>> (Accessed March 2014)

Nelson, Howard J.

- 1983 *The Los Angeles Metropolis*. Dubuque, IA: Kendall/Hunt Publishing Company.

Ng, S.J., J.W. Dole, R.M. Sauvajot, S.P.D. Riley, and T.J. Valone

- 2004 "Use of highway undercrossings by wildlife in southern California." *Biological Conservation* 115: 499-507.

Norris and Webb

- 1990 *Geology of California*. New York, NY: John Wiley and Sons.

North American Bird Conservation Initiative, U.S. Committee

- 2013 *The State of the Birds 2013 Report on Private Lands*. Washington, DC: U.S. Department of the Interior.

Northwest Economic Associates and Chester King

- 2004 *Ethnographic Overview of the Angeles National Forest: Tataviam and San Gabriel Mountain Ethnohistory*. Report prepared for USDA Southern California Province, Angeles National Forest. Northwest Economic Associates, Vancouver, WA, and Topanga Anthropological Consultants, Topanga, CA.

Oakeshott, Gordon B.

- 1971 "The Geologic Setting" from *California Geology*, April/May 1971, Vol. 24, No. 4-5. Special San Fernando Earthquake Edition.
- 1958 "Geology and Mineral Deposits of the San Fernando Quadrangle, Los Angeles County, California." *California Division of Mines, Bulletin* 172, p. 121.

Olmsted Brothers and Bartholomew Associates

- 1930 *Parks, Playgrounds and Beaches for the Los Angeles Region*. Los Angeles, CA. Prepared for the Los Angeles Chamber of Commerce - Citizens' Committee on Parks, Playgrounds, and Beaches.

Ornduff, Robert

- 1974 *Introduction to California Plant Life*. Berkeley, CA: University of California Press.

Orsi, Jared

- 2004 *Hazardous Metropolis: Flooding and Urban Ecology in Los Angeles*. Berkeley, CA: University of California Press.

Parker, J.D.

- 1983a "Lower Paleocene to lower Eocene, nonmarine to deep-marine strata of the Simi Hills, Ventura County, California." Pages 3-22 in Squires, R. L. and M. V. Filewicz, editors. *Cenozoic geology of the Simi Valley area*. Los Angeles, CA: Society of Economic Paleontologists and Mineralogists, Pacific Section.
- 1983b "Simi Conglomerate and Las Virgenes Sandstone field trip stops." Pages 261-263 in Squires, R. L. and M. V. Filewicz, editors. *Cenozoic geology of the Simi Valley area*. Los Angeles, CA: Society of Economic Paleontologists and Mineralogists, Pacific Section.

Parkins, W.E.

- 1955 "The Sodium Reactor Experiment," in *Proceedings of the International Conference on the Peaceful Uses of Atomic Energy: Volume 3, Power Reactors*. New York, NY: United Nations.

- Penrod, K., C. Cabañero, P. Beier, C. Luke, W. Spencer, E. Rubin, R. Sauvajot, S. Riley, and D. Kamradt
2006 *South Coast Missing Linkages: A Linkage Design for the Santa Monica-Sierra Madre Connection*. South Coast Wildlands in cooperation with National Park Service, Santa Monica Mountains Conservancy, California State Parks, and The Nature Conservancy. Available on the Internet at <http://www.scwildlands.org/reports/SCML_SantaMonica_SierraMadre.pdf>
- Popenoe, W.P.
1954 "Mesozoic formations and faunas, southern California and northern Baja California." Pages 15-21 in Jahns, R. H., editor. *Geology of southern California*, Chapter III, historical geology. Bulletin 170. Sacramento, CA: California Division of Mines.
- Radtke, K., A.M. Arndt, and R.H. Wakimoto
1982 *Fire history of the Santa Monica Mountains*. Berkeley, CA: Pacific Southwest Forest and Range Experiment Station.
- Raven, Peter H. and Daniel I. Axelrod
1978 *Origin and Relationships of the California Flora*. Berkeley, CA: University of California Press.
- Richardson, Robert B.
2009 *Recreation Use in National Forests, Urban Population Growth, and Demographic Change: The Case of the San Gabriel Mountains*. Michigan State University. Prepared for the Sierra Club.
- Riefner, Richard E., Peter A. Bowler and Thomas W. Mulroy
2004 "Lichens on Rock and Biological Crusts Enhance Recruitment Success of Rare Dudleya Species (Crassulaceae) in Southern California." *Crossosoma* 29(1) Fall-Winter 2003.
- Riley, S. P. D., R. M. Sauvajot, D. Kamradt, E. C. York, C. Bromley, T. K. Fuller, and R. K. Wayne
2003 "Effects of urbanization and fragmentation on bobcats and coyotes in urban southern California." *Conservation Biology* 17 : 566-576.
- Riley, S. P. D., G. Busteed, L. Kats, T. Vandergon, L. Lee, R. Dagit, J. Kerby, R. M. Sauvajot, and R. N. Fisher
2005 "Effects of urbanization on the distribution and abundance of amphibians and exotic species in southern California streams." *Conservation Biology* 19 : 1894-1907 (2005).
- Riley, S.P.D., J.P. Pollinger, R.M. Sauvajot, E.C. York, C. Bromley, T.K. Fuller, and R.K. Wayne
2006 "A southern California freeway is a physical and social barrier to gene flow in carnivores." *Molecular Ecology* 15: 1733-1741.
- Riley S.P.D., C. Bromley, R.H. Poppenga, F.A. Uzal, L. Whited, and R.M. Sauvajot
2007 "Anticoagulant exposure and notoedric mange in bobcats and mountain lions in urban southern California." *Journal of Wildlife Management* 71: 1874-1884.
- Riley S.P.D., L.E.K. Serieys, J.P. Pollinger, J.A. Sikich, L. Dalbeck, R.K. Wayne, H.B. Ernest
2014 "Individual Behaviors Dominate the Dynamics of an Urban Mountain Lion Population Isolated by Roads." *Current Biology* 24: 1-6.
- The River Project
2006 *The State of the Tujunga: An Assessment of the Tujunga/Pacoima Watershed*. Available on the Internet at <<http://www.theriverproject.org/tujunga/plan.html>>
- Robinson, W. John
2001 *Trails of the Angeles: 100 Hikes in the San Gabriels*. Berkeley, CA: Wilderness Press. Seventh Edition.
1991 *The San Gabriels: The Mountain Country from Soledad Canyon to Lytle Creek*. Arcadia, CA: Big Santa Anita Historical Society.

- Roland, Carol, Heather Goodson, Chad Moffett, and Christina Slattery
2011 National Register of Historic Places Multiple Property Documentation Form (Draft), U.S Highway 66 in California.
- Rundel, P.W. and J. Tiszler
2007 "The Santa Monica Mountains in a Global Context." Pages 17- 27 in *Flora and Ecology of Santa Monica Mountains: Proceedings of 32nd Annual Southern California Botanists Symposium*. D. A. Knapp, editor. Pages 173-194. Southern California Botanists Special Publication No. 4, Fullerton, California.
- Rutledge, D.T., C.A. Lepczyk, J. Xie, and J. Liu
2001 "Spatiotemporal dynamics of endangered species hotspots in the United States." *Conservation Biology* 15: 475-487.
- Safford, H.D. and K. Van de Water
2013 *Using Fire Return Interval Departure (FRID) analysis to map spatial and temporal changes in fire frequency on National Forest lands in California*. Research Paper PSW-RP-266. USDA Forest Service, Pacific Southwest Research Station, Albany, California, USA.
- Sagar, Tarja, Santa Monica Mountains National Recreation Area
2014 Personal communication with Katelyn Walker, National Park Service, Pacific West Region, March 2014.
- Salmon, John S.
2011 *Protecting America: Cold War Defensive Sites: A National Historic Landmark Theme Study*. The National Historic Landmarks Program. Washington, DC: U.S. Department of the Interior.
- Santa Clara River Project Steering Committee
1996 *Santa Clara River Enhancement and Management Plan Study-Biological Resources Volume 1*.
- Santa Clarita [City of Santa Clarita]
2011 *City of Santa Clarita General Plan, Conservation and Open Space Element*.
- Santa Clarita Watershed Recreation and Conservation Authority and City of Santa Clarita
2008 *East Santa Clarita Land Conservation Concept Plan and Implementation Strategy*. Prepared by The Riverside Land Conservancy and The Dangermond Group.
- Santa Monica Mountains Conservancy
2013 Mulholland Scenic Parkway and Corridor. Available on the Internet at <<http://www.lamountains.com/parks.asp?parkid=37>>
2011 *Annual Report Fiscal Year 2011-2012: Project Activity and Comprehensive Plan Certification*. Available on the Internet at <http://smmc.ca.gov/pdf/attachment3371_Annual%20Report.pdf>
1990 *Rim of the Valley Corridor Trail Master Plan*. Prepared by Dangermond Group.
- Sapere Consulting, Inc and Boeing Co.
2005 *Historical Site Assessment of Area IV, Santa Susana Field Laboratory, Ventura County, California*. Washington, DC: U.S. Department of Energy.
- Sapphos Environmental, Inc.
2012 *Historic Resources Survey Report, West Los Angeles Community Plan Area*. Prepared for the City of Los Angeles Department of City Planning Office of Historic Resources. Pasadena, CA.
- Saul, L.R.
1983 "Notes on Paleogene Turritellas, Venericardias, and molluscan stages of the Simi Valley area, California." in Squires, R.L. and M.V. Filewicz, editors. *Cenozoic geology of the Simi Valley area*. Los Angeles, CA: Society of Economic Paleontologists and Mineralogists, Pacific Section. pp71-80.

Saul, L.R. and J.M. Alderson

- 1981 "Late Cretaceous Mollusca of the Simi Hills: an introduction." in Link, M.H., R.L. Squires, and I.P. Colburn, editors. *Simi Hills Cretaceous turbidites, southern California*. Los Angeles, CA: Society of Economic Paleontologists and Mineralogists, Pacific Section. pp29-41.

Sauvajot, R.M., E.C. York, T.K. Fuller, H. Sharon Kim, D.A. Kamradt and R.K. Wayne

- 2000 "Distribution and status of carnivores in the Santa Monica Mountains, California: Preliminary results from radio telemetry and remote camera surveys." in Keeley, J. E., M. Baer-Keeley and C. J. Fotheringham (eds), *2nd Interface Between Ecology and Land Development in California*. U.S. Geological Survey Open-File Report 00-62. pp 113-123.

Savage, D. E., Theodore Downs, and Owen Poe

- 1954 *Cenozoic land life of southern California*. California Division of Mines Bulletin 179: 43-58.

Sawyer, J.O., T. Keeler-Wolf, and J.M. Evens

- 2009 *A Manual of California Vegetation, 2nd edition*. Sacramento, CA: California Native Plant Society.

[SCAG] Southern California Association of Governments

- 2012 *2012-2035 Regional Transportation Plan/ Sustainable Communities Strategy*.

Schoenherr, Allan A

- 1992 *A Natural History of California*. Berkeley, CA: University of California Press.

Schiffman, Paula M.

- 2005 "The Los Angeles Prairie." In *Land of Sunshine: An Environmental History of Metropolitan Los Angeles*. William Deverall and Greg Hise, editors. Pittsburgh, PA: University of Pittsburg Press.

- n.d. *Natural History of the San Fernando Valley*. Unpublished paper. Northridge, California.

Scott, Allen J., and Edward W. Soja, eds.

- 1998 *The City: Los Angeles and Urban Theory at the End of the Twentieth Century*. Berkeley, CA: University of California Press.

Scott, Gloria and Janice Calpo

- 2012 Personal communication with Barbara Butler, National Park Service, Pacific West Region, June 2012.

Seward, Amanda

- 2013 National Register of Historic Places, Case Study House #22 [Stahl House], Los Angeles, Los Angeles County, California. Los Angeles Conservancy Modern Committee.

Simi Valley [City of Simi Valley]

- 2008 *Simi Valley Bicycle Master Plan*.

Smith, Robert L.

- 2002 National Register of Historic Places, Charles M. Pratt House, Ojai, Ventura County, California, National Register #00001227.

Sikich, Sarah, Katherine Pease, Sarah Diringer, Mark Abramson, Mark Gold, Shelly Luce

- n.d. *Malibu Creek Watershed: An Ecosystem on the Brink. Prepared for Heal the Bay*. Available on the Internet at <<http://www.healthebay.org/about-bay/current-issues/keeping-ocean-healthy/malibu-creek-watershed>>

Snell, Charles W.

- 1963 National Register of Historic Place, Pico Canyon, Well No. 4 (CSO 4), Los Angeles County, California., National Register # 66000212 .

Soulé, M.E.

- 1989 "Conservation biology in the twenty-first Century: Summary and outlook." in D. Western and Mary Pearl (eds.) *Conservation for the Twenty-first Century*. Oxford, U.K. and New York, NY: Oxford University Press. pp 297-303

South Coast Wildlands

- 2008 *South Coast Missing Linkages: A Wildland Network for the South Coast Ecoregion*. Produced in cooperation with partners in the South Coast Missing Linkages Initiative. Available on the Internet at <<http://www.scwildlands.org>>

Southern California Earthquake Data Center

- 2014 Earthquake and fault data available on the Internet at <<http://www.data.scec.org/>>

Soza, V.L., L. Gross, S. Boyd, N. Fraga

- in press "Vascular Flora of the Verdugo Mountains and San Rafael Hills, Los Angeles County, California." *Crossoma*.

Spencer, W.D., P. Beier, K. Penrod, K. Winters, C. Paulman, H. Rustigian-Romsos, J. Strittholt, M. Parisi, and A. Pettler.

- 2010 *California Essential Habitat Connectivity Project: A Strategy for Conserving a Connected California*. Prepared for California Department of Transportation, California Department of Fish and Game, and Federal Highways Administration.

Squires, Richard, California State University, Northridge

- 2011 Personal communication with Margie Steigerwald, National Park Service, Pacific West Region, December 2011.
- 2001 "Additions to the Eocene megafossil fauna of the Lajas Formation, Simi Valley, southern California." *Los Angeles County Museum, Contributions in Science* 489.
- 1997 "Taxonomy and distribution of the buccinid gastropod *Brachysphingus* from the uppermost Cretaceous and lower Cenozoic marine strata of the Pacific slope of North America." *Journal of Paleontology* 71(5):847-861.
- 1984 "Megapaleontology of the Eocene Lajas Formation, Simi Valley, California." *Los Angeles County Museum, Contributions in Science* 350.
- 1983a "Eocene Lajas Formation, Simi Valley, southern California." in Squires, R.L. and M.V. Filewicz, editors. *Cenozoic geology of the Simi Valley area*. Los Angeles, CA: Society of Economic Paleontologists and Mineralogists, Pacific Section. pp 81-95.
- 1983b "New mollusks from the lower middle Eocene Lajas Formation, southern California." *Journal of Paleontology* 57(2):354-362.
- 1981a "Geologic map of the Upper Cretaceous Chatsworth Formation, Simi Hills, California (with fossil localities)." Map in Link, M.H., R.L. Squires, and I.P. Colburn, editors. *Simi Hills Cretaceous turbidites, southern California*. Los Angeles, CA: Society of Economic Paleontologists and Mineralogists, Pacific Section. Scale 1:50,000.
- 1981b "Introduction to the paleontology of the Chatsworth Formation." in Link, M. H., R. L. Squires, and I. P. Colburn, editors. *Simi Hills Cretaceous turbidites, southern California*. Los Angeles, CA: Society of Economic Paleontologists and Mineralogists, Pacific Section. p 27.
- 1979 "New macrofossil occurrences, Stewart Bed, middle Eocene Lajas Formation, Lajas Canyon, Santa Susana Mountains, California." *Abstracts with Programs - Geological Society of America* 11(3):129.

Squires, R.L. and G.L. Kennedy

- 1998 "Additions to the Late Paleocene molluscan fauna from the Santa Monica Mountains, Los Angeles County, southern California." *The Veliger* 41(2):157-171.

Squires, R.L. and L.R. Saul

- 2007 "Paleocene pareorine turritellid gastropods from the Pacific slope of North America." *The Nautilus* 121(1):1-16.
- 2002 "New information on Late Cretaceous, Paleocene, and Eocene neritid gastropods from the North American Pacific Slope." *The Veliger* 45(3):177-192.
- 2001 "A new genus of aporrhaid gastropod from upper Paleocene rocks in southern California." *The Veliger* 44(3):327-330.
- 1998 "New upper Paleocene species of the bivalve *Plicatula* from southern California." *Journal of Paleontology* 72(6):1024-1029.
- 1981 "Dayton Canyon megafossil locality stop." in Link, M. H., R. L. Squires, and I. P. Colburn, editors. *Simi Hills Cretaceous turbidites, southern California*. Los Angeles, CA: Society of Economic Paleontologists and Mineralogists, Pacific Section. pp 131-132.

Stadum, C.J. and P.W. Weigand

- 1999 "Fossil wood from the middle Miocene Conejo Volcanics, Santa Monica Mountains, California." *Bulletin - Southern California Academy of Sciences* 98(1):15-25.

Stanton, R.J., Jr. and J.M. Alderson

- 2010 "Limestone sedimentation concurrent with submarine volcanism in the Conejo Volcanics, Miocene, Santa Monica Mountains, southern California." *Abstracts with Programs - Geological Society of America* 42(4):50.
- 2006 "Paleontology of the Conejo Volcanics, lower to middle Miocene, Los Angeles County, California." *Abstracts with Programs - Geological Society of America* 38(7):444.

Stebbins, G. L., and J. Major

- 1965 "Endemism and speciation in the California flora." *Ecological Monographs* 35: 1-35.

Stebbins, R.C. and S.M. McGinnis

- 2012 *Field Guide to Amphibians and Reptiles of California: Revised Edition*. Berkeley, CA: University of California Press.

Stecheson, M.

- 2001 "Overview of Late Cretaceous marine gastropods from the Chatsworth Formation, Simi Hills, southern California." *Abstracts with Programs - Geological Society of America* 33(3):34.

Stecheson, Mary, Natural History Museum of Los Angeles County

- 2012 Personal communication with Margie Steigerwald, National Park Service, Pacific West Region, January 2012.

Stein, B.A., L.S. Kutner, and J.S. Adams, editors.

- 2000 *Precious heritage: the status of biodiversity in the United States*. Oxford, U.K. and New York, NY: Oxford University Press.

Stephenson, John R. and Gena M. Calcarone

- 1999 *Southern California Mountains and Foothills Assessment: Habitat and Species Conservation Issues*. Gen. Tech. Rep. GTR-PSW-172. Albany, CA: Pacific Southwest Research Station, Forest Service, U.S. Department of Agriculture.

Stickel, Gary

- 2006 National Register of Historic Places Nomination Form, Farpoint Site, Malibu vicinity, Los Angeles County, California. National Park Service, U.S. Department of the Interior.

Stoms, D.M., P.A. Jantz, and F.W. Davis.

- 2012 *Natural resource condition assessment: Santa Monica Mountains National Recreation Area*. Natural Resource Report NPS/SAMO/NRR—2013/715. Fort Collins, CO: National Park Service.

Swift, C.C., T.R. Haglund, M. Ruiz, and R.N. Fisher.

- 1993 "The status and distribution of the freshwater fishes of southern California." *Bulletin of the Southern California Academy of Science* 92(3):101-167.

Syphard, A.D., V.C. Radeloff, T.J. Hawbaker, and S.I. Stewart

- 2009 "Conservation threats due to human-caused increases in fire frequency in Mediterranean-climate ecosystems." *Conservation Biology* 23:758-769

Taylor, G.E. and D.R. White

- 1983 "Calabasas Formation field trip stop." in Squires, R. L. and M. V. Filewicz, editors. *Cenozoic geology of the Simi Valley area*. Los Angeles, CA: Society of Economic Paleontologists and Mineralogists, Pacific Section. p 258.

Tejada, Barbara (California Department of Parks and Recreation)

- 2012 Personal communication with Barbara Butler Baungard, National Park Service, Pacific West Region, June 2012.

Tiszler, John

- 2013 Personal communication with Anne Dove, National Park Service, Pacific West Region, June 2013.

The Trust for Public Land

- 2005 Healthy Parks, Healthy Communities: Park Inequities and Health Disparities in California Fact Sheet.
- 2004 *No Place to Play: A Comparative Analysis of Park Access in Seven Major Cities*. Available on the Internet at <http://www.tpl.org/tier3_cd.cfm?content_item_id=14565&folder_id=266>

Turhollow, Anthony F.

- 1975 *A History of the Los Angeles District, U.S. Army Corps of Engineers, 1898-1965*. Los Angeles, CA: U.S. Army Engineer District.

Tweet, Justin

- 2012a *Paleontological resource inventory and monitoring: Mediterranean Coast Network*. Natural Resource Technical Report NPS/MEDN/NRTR – 2012/640. Fort Collins, CO: National Park Service.
- 2012b Personal communication with Margie Steigerwald, National Park Service, Pacific West Region, April 2012.

UCLA (University of California, Los Angeles) Landscape Architecture Program

- 2006 *Saving the San Gabriel River*. Los Angeles, CA.

[USACOE] U.S. Army Corps of Engineers

- 2013 *Los Angeles River Ecosystem Restoration Integrated Feasibility Report: Feasibility Study and Environmental Impact Statement/Environmental Impact Report (Draft)-Volume 1: Integrated Feasibility Report*. Los Angeles County, California.
- 2011 *Hansen Dam Basin – Los Angeles, California – Master Plan and Environmental Assessment*. Available on the Internet at <http://www.spl.usace.army.mil/Portals/17/docs/DamSafety/hansen_masterplan2011.pdf>
- 2011b *Sepulveda Dam Basin - Los Angeles, California - Master Plan and Environmental Assessment*. Available on the Internet at <http://www.spl.usace.army.mil/Portals/17/docs/publicnotices/sepulveda_master10-1.pdf>

USACOE and Los Angeles County Department of Public Works

- 2011 *Arroyo Seco Watershed Ecosystem Restoration Study*. Los Angeles County, California.

[USAF] U.S. Air Force

- 2013 Los Angeles Air Force Station: Space and Missile Systems Center. Available on the Internet at <<http://www.losangeles.af.mil/library/factsheets/factsheet.asp?id=5318>>

[USFWS] U.S. Fish and Wildlife Service

- 2013a *California Condor (Gymnogyps californianus) 5-Year Review: Summary and Evaluation*. Available on the Internet at <http://ecos.fws.gov/docs/five_year_review/doc4163.pdf>
- 2013b “Endangered and Threatened Wildlife and Plants; Designation of Critical Habitat for Tidewater Goby; Final Rule.” *Federal Register* 78: 8746-8819.
- 2013c *U.S. Fish and Wildlife Service Species Assessment and Listing Priority Assignment Form for Chorizanthe parryi var. fernandina*. Available on the Internet at <http://ecos.fws.gov/docs/candidate/assessments/2014/r8/QoEZ_P01.pdf>
- 2012 *Conservancy Fairy Shrimp (Branchinecta conservatio) 5-Year Review: Summary and Evaluation*. Available on the Internet at <http://ecos.fws.gov/docs/five_year_review/doc4012.pdf>
- 2011a “Endangered and Threatened Wildlife and Plants; Withdrawal of the Proposed Rule to List the Mountain Plover as Threatened.” *Federal Register* 76: 27756-27799.
- 2011b Letter to NPS, Subject: Request for Comments on the Rim of the Valley Corridor Special Resource Study and Environmental Assessment, Ventura and Los Angeles Counties, California. From Ventura Fish and Wildlife Office.
- 2011c *Santa Ana sucker (Catostomus snyderi) 5-Year Review: Summary and Evaluation*. Available on the Internet at <http://ecos.fws.gov/docs/five_year_review/doc3616.pdf>
- 2011d *U.S. Fish and Wildlife Service Species Assessment and Listing Priority Assignment Form for Coccyzus americanus*. Available on the Internet at <http://ecos.fws.gov/docs/candidate/assessments/2012/r8/Bo6R_V01.pdf>
- 2010a *Astragalus pycnostachyus var. lanosissimus (Ventura marsh milk-vetch) 5-Year Review: Summary and Evaluation*. Available on the Internet at <http://ecos.fws.gov/docs/five_year_review/doc3554.pdf>
- 2010b *Coastal California gnatcatcher (Poliophtila californica californica) 5-year Review: Summary and Evaluation*. Available on the Internet at <http://ecos.fws.gov/docs/five_year_review/doc3571.pdf>
- 2010c *Dodecahema leptoceras (slender-horned spineflower) 5-Year Review: Summary and Evaluation*. Available on the internet at http://ecos.fws.gov/docs/five_year_review/doc3622.pdf
- 2010d “Endangered and Threatened Wildlife and Plants: Revised Designation of Critical Habitat for California Red-Legged Frog; Final Rule.” *Federal Register* 75: 12815–12959.
- 2009a *Arroyo Toad (Bufo californicus (=microscaphus)) 5-Year Review: Summary and Evaluation*. Available on the Internet at <http://ecos.fws.gov/docs/five_year_review/doc2592.pdf>
- 2009b *Chloropyron maritimum subsp. maritimum (Cordylanthus maritimus subsp. maritimus) (salt marsh bird’s-beak) 5-Year Review: Summary and Evaluation*. Available on the Internet at <http://ecos.fws.gov/docs/five_year_review/doc2566.pdf>
- 2009c *Dudleya abramsii ssp. parva (=Dudleya parva) (Conejo Dudleya) 5-Year Review: Summary and Evaluation*. Available on the Internet at <http://ecos.fws.gov/docs/five_year_review/doc2383.pdf>
- 2009d *Dudleya cymosa ssp. marcescens (Marcescent Dudleya) 5-Year Review: Summary and Evaluation*. Available on the Internet at <http://ecos.fws.gov/docs/five_year_review/doc2543.pdf>
- 2009e *Dudleya cymosa subsp. ovatifolia (Santa Monica Mountains dudleya) 5-Year Review: Summary and Evaluation*. Available on the Internet at <http://www.fws.gov/carlsbad/speciesstatuslist/5yr/20091113_5yr_ducyov.pdf>
- 2009f *Dudleya verity (Verity’s Dudleya) 5-Year Review: Summary and Evaluation*. Available on the Internet at <http://ecos.fws.gov/docs/five_year_review/doc2554.pdf>

- 2009g *Light-footed clapper rail (Rallus longirostris levipes) 5-Year Review: Summary and Evaluation*. Available on the Internet at <http://ecos.fws.gov/docs/five_year_review/doc2573.pdf>
- 2009h *Navarretia fossalis (Spreading navarretia) 5-Year Review: Summary and Evaluation*. Available on the Internet at <http://ecos.fws.gov/docs/five_year_review/doc2574.pdf>
- 2009i *Unarmored Threespine Stickleback (Gasterosteus aculeatus williamsoni) 5-Year Review: Summary and Evaluation*. Available on the Internet at <http://ecos.fws.gov/docs/five_year_review/doc2629.pdf>
- 2008a “Endangered and Threatened Wildlife and Plants; Designation of Critical Habitat for *Berberis nevinii* (Nevin’s barberry).” *Federal Register* 72: 72009-72213.
- 2008b *(Pentachaeta lyonii) Lyon’s pentachaeta 5-Year Review: Summary and Evaluation*. Available on the Internet at <http://ecos.fws.gov/docs/five_year_review/doc1994.pdf>
- 2008c *Riverside Fairy Shrimp (Streptocephalus woottoni) 5-Year Review: Summary and Evaluation*. Available on the Internet at <http://ecos.fws.gov/docs/five_year_review/doc1997.pdf>
- 2007a *Recovery plan for the Pacific Coast Population of the Western Snowy Plover (Charadrius alexandrinus nivosus)*. Available on the Internet at <http://ecos.fws.gov/docs/recovery_plan/070924.pdf>
- 2007b *Tidewater Goby (Eucyclogobius newberryi) 5-Year Review: Summary and Evaluation*. Available on the Internet at <http://ecos.fws.gov/docs/five_year_review/doc1144.pdf>
- 2007c *Vernal Pool Fairy Shrimp (Branchinecta lynchi) 5-Year Review: Summary and Evaluation*. Available online at http://ecos.fws.gov/docs/five_year_review/doc1150.pdf
- 2006a *California least tern (Sterna antillarum browni) 5-Year Review: Summary and Evaluation*. Available on the Internet at <http://ecos.fws.gov/docs/five_year_review/doc775.pdf>
- 2006b “Endangered and Threatened Wildlife and Plants; Designation of Critical Habitat for the Southern California Distinct Population Segment of the Mountain Yellow-Legged Frog (*Rana muscosa*)” *Federal Register* 70: 54344–54386.
- 2006c *Least Bell’s vireo (Vireo belii pusillus) 5-Year Review: Summary and Evaluation*. Available on the internet at http://ecos.fws.gov/docs/five_year_review/doc781.pdf
- 2005 “Endangered and Threatened Wildlife and Plants; Proposed Designation of Critical Habitat for the Southern California Distinct Vertebrate Population Segment of the Mountain Yellow-Legged Frog (*Rana muscosa*).” *Federal Register* 70: 54106– 54143.
- 2004 “Endangered and Threatened Wildlife and Plants; Final Rule To Designate Critical Habitat for the Santa Ana Sucker (*Catostomus santaanae*).” *Federal Register* 69: 8839– 8861.
- 2002 *Final Recovery Plan Southwestern Willow Flycatcher (Empidonax traillii extimus)*. Prepared by Southwestern Willow Flycatcher Recovery Team Technical Subgroup. Available on the Internet at <http://ecos.fws.gov/docs/recovery_plans/2002/020830c.pdf>
- 1998 *Vernal Pools of Southern California Recovery Plan*. Fish and Wildlife Service Region One, Portland, Oregon.

[USFS] United States Forest Service, United States Department of Agriculture.

- 2014 *San Gabriel Mountains National Monument - Fact Sheet*. October 2014. Available on the Internet at < <http://www.fs.fed.us/sites/default/files/media/2014/41/san-gabriel-fact-sheet.pdf>>
- 2013 *CalVeg Zone 7: South Coast*. GIS data available on the Internet at <<http://www.fs.usda.gov/detail/r5/landmanagement/resourcemanagement/?cid=stelprdb5347188>>

- 2010 *Station Fire BAER Revisit*. United States Department of Agriculture, Forest Service. Pacific Southwest Region, Angeles National Forest.
- 2007 *Recreation Facility Analysis: Five-Year Proposed Program of Work and Programmatic Effects of Implementation*. Available on the internet at: < <http://www.fs.fed.us/recreation/programs/rfa/index.shtml> >
- 2005 *Southern California National Forests Plan: Land Management Plan, Angeles National Forest Strategy*. R5-MB-075 Available on the Internet at <<http://www.fs.fed.us/r5/scfpr/projects/lmp/>>
- 1986 *Cultural Resource Overview for the Angeles National Forest*. Prepared by McIntyre, Michael.

U.S. Geological Survey (USGS) and the Southern California Earthquake Center

- 1998 “Continuous GPS monitoring of Structural Deformation at Pacoima Dam, California.” Authors: Hudnut, Kenneth W. and Jeffrey A. Behr. July/August 1998 issue (vol. 69, No. 4; pp. 299-308) of *Seismological Research Letters*, a journal published by the Seismological Society of America.

Vandergast, Amy G., Andrew J. Bohonakb, Stacie A. Hathawaya, Joshua Boysb, and Robert N. Fisher

- 2008 “Are hotspots of evolutionary potential adequately protected in southern California?” *Biological Conservation* Vol 141, pp. 1648 – 1664

Ventura, County of, Resource Management Agency, Planning Division

- 2011 (June 28 amendment to May 24, 1988) *Ventura County General Plan Resources* (Appendix).
- 2007 (May 8 amendment to May 24, 1988) *Ventura County General Plan*.

Ventura County Watershed Protection District (VCWPD)

- 2013 Groundwater Resources. Available on the Internet at <http://portal.countyofventura.org/portal/page/portal/PUBLIC_WORKS/Watershed_Protection_District/About_Us/VCWPD_Divisions/Water_and_Environmental_Resources/Groundwater_Resources>
- 2010 *Calleguas Creek Integrated Watershed Protection Plan Phase II Management Strategy Study*. Prepared by CH2MHill, Santa Ana CA.
- 2005 *Flood Mitigation Plan for Ventura County, California*. Prepared by URS Corporation, Oakland, CA.
- 2004 *Calleguas Creek Watershed Management Plan: A Cooperative Strategy for Resource Management & Protection, Phase I Report*.

[VCWPD & LACDPW] Ventura County Watershed Protection District and Los Angeles County Department of Public Works

- 2005 *Santa Clara River Enhancement and Management Plan (SCREMP)*. Prepared by AMEC Earth & Environmental.

Wilcove, David S. Rothstein, David, Dubow, Jason, Philips, Ali and Elizabeth Losos

- 1998 “Quantifying Threats to imperiled species in the US.” *Bioscience* 48(8): 607(9).

Wagner, H.M., E.B. Lander, M.A. Roeder, D.R. Prothero, and G.E. McDaniel, Jr.

- 2007 “A new Irvingtonian land mammal assemblage from the Saugus Formation, Moorpark, Ventura County, California.” *Bulletin - Southern California Academy of Sciences* 106(2):141.

Wallace, William J.

- 1955 “A Suggested Chronology for Southern California Coastal Archaeology.” *Southwestern Journal of Anthropology*
- 1954 “The Little Sycamore Site and the Early Millingstone Cultures of Southern California.” *American Antiquity* 20:112-123.

Water and Power Associates

- 2013 Zanja Madre. Available on the Internet at <<http://waterandpower.org>> (Accessed January 2013)

Weigand, P.W.

- 1982 "Middle Cenozoic volcanism of the Transverse Ranges, southern California." in Fife, D.L. and J.A. Minch, editors. *Geology and mineral wealth of the California Transverse Ranges: Mason Hill volume*. Santa Ana, CA: South Coast Geological Society. pp170-188.

Weigand, P.W. and K.L. Savage

- 1993 "Review of the petrology and geochemistry of the Miocene Conejo Volcanics of the Santa Monica Mountains, California." in Weigand, P. W., A. E. Fritsche, and G. E. Davis, editors. *Depositional and volcanic environments of middle Tertiary rocks in the Santa Monica Mountains, southern California*. Bakersfield, CA: Society of Economic Paleontologists and Mineralogists, Pacific Section. Book 72. pp 93-112.

Weigand, P.W., K.L. Savage, and C. Nicholson

- 2002 "The Conejo Volcanics and other Miocene volcanic suites in southwestern California." in Barth, A., editor. *Contributions to crustal evolution of the southwestern United States*. Boulder, CO: Geological Society of America. Special Paper 365. pp 187-204.

Welton, B.J. and J.M. Alderson

- 1981 "A preliminary note on the Late Cretaceous sharks of the Chatsworth Formation at Dayton Canyon, Simi Hills, Los Angeles County, California." in Link, M.H., R.L. Squires, and I.P. Colburn, editors. *Simi Hills Cretaceous turbidites, southern California*. Los Angeles, CA: Society of Economic Paleontologists and Mineralogists, Pacific Section. pp 53-57.

Whistler, D.P. and E.B. Lander

- 2003 "New late Uintan to early Hemingfordian land mammal assemblages from the undifferentiated Sespe and Vaqueros Formations, Orange County, and from the Sespe and equivalent marine formations in Los Angeles, Santa Barbara, and Ventura counties." *Bulletin of the American Museum of Natural History* 279:231-268.

Williams, James C.

- 1996 "Fuel At Last: Oil and Gas for California, 1860s-1940." *California History* 75.2 (1996): 115-127

Winterer, E.L., and D.L. Durham

- 1962 *Geology of part of the southeastern Ventura basin, Los Angeles County, California*. U.S. Geological Survey, Professional Paper 334-H, p. 275-366.

White, Gerald T.

- 1970 "California's Other Mineral." *Pacific Historical Review* 39.2 (1970): 135-154
- 1968 *Scientists in Conflict: The Beginnings of the Oil Industry in California*. San Marino, CA: Huntington Library.

Yerkes, R.F. and R.H. Campbell

- 1979 Stratigraphic nomenclature of the central Santa Monica Mountains, Los Angeles County, California. U.S. Geological Survey, Reston, VA. Bulletin 1457-E. Available on the Internet at <<http://pubs.er.usgs.gov/publication/b1457E>> (Accessed November 2011)

Yerkes, R.F., McCulloh, R.F., Schoellhamer, J.E. and J.G. Vedder

- 1965 *Geology of the Los Angeles Basin California-an Introduction*. Geological Survey Professional Paper 420-A. Washington, DC: United States Government Printing Office.

Study Team and Preparers

Core Study Team

The core study team included NPS planning staff based in the southern California region and the NPS Pacific West Regional Office Planning and Environmental Compliance Division. Core study team members were responsible for public involvement and outreach materials, research, writing and analysis related to study area resources, development of the alternatives, environmental compliance, and production of the draft study report.

- Barbara Butler Baungard, Landscape Architect, Park Planning and Environmental Compliance Division, Pacific West Regional Office, San Francisco
- Anne Dove, Project Manager, Outdoor Recreation Planner, Park Planning and Environmental Compliance Division/ Rivers Trails and Conservation Assistance Program, Pacific West Region, Los Angeles
- Rose Rumball-Petre, Outdoor Recreation Planner, Park Planning and Environmental Compliance Division, Pacific West Region
- Margie Steigerwald, Outdoor Recreation Planner, Santa Monica Mountains National Recreation Area
- Katelyn Walker, Outdoor Recreation Planner, Park Planning and Environmental Compliance Division, Pacific West Regional Office, San Francisco

Extended Study Team

The extended study team included NPS Pacific West Regional Office and Santa Monica Mountains National Recreation Area staff that provided assistance and subject-matter expertise for specific aspects of the study.

NPS Pacific West Regional Office, San Francisco

- Timothy Babalis, Environmental Historian
- Martha Crusius, Program Chief, Park Planning and Environmental Compliance
- Mark Rudo, Archeologist (retired)
- Ray Sauvajot, Chief, Natural Resources Programs (former)
- Alan Schmierer, PWR Regional Environmental Coordinator

Santa Monica Mountains National Recreation Area

- Melanie Beck, Outdoor Recreation Planner
- Christy Brigham, Chief of Planning, Science and Resource Management
- Gary Brown, Program Manager, Cultural Resources
- Brendan Clarke, GIS Technician
- Katy Delany, Wildlife Ecologist
- Rene Gonzalez, GIS Technician
- Denise Kamradt, GIS Specialist
- Steve Matsuda, Volunteer
- Seth Riley, Wildlife Ecologist
- Tarja Sagar, Biotechnician
- David Szymanski, Superintendent
- John Tiszler, Plant Ecologist

Contributions from Partner Agencies

As described above under resource analysis, partners assisted the study process by providing advice and guidance, resource information, and technical reviews. In addition, the Mountains Recreation Conservation Authority (MRCA) provided mapping assistance.

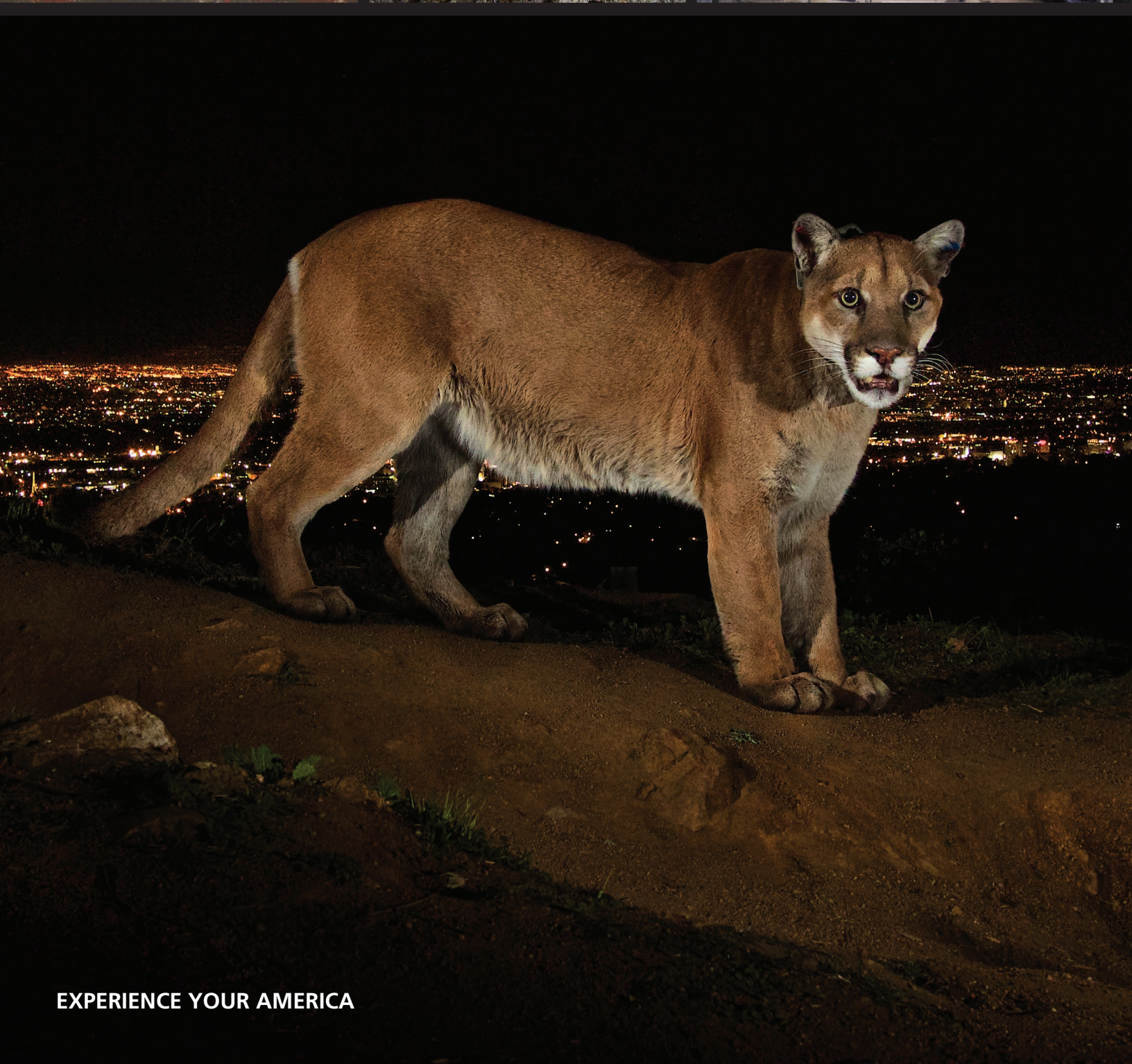


The National Park Service cares for the special places saved by the American people so that all may experience our heritage.

Experience Your America



As the nation's principal conservation agency, the Department of the Interior has responsibility for most of our nationally owned public lands and natural resources. This includes fostering sound use of our land and water resources; protecting our fish, wildlife, and biological diversity; preserving the environmental and cultural values of our national parks and historical places; and providing for the enjoyment of life through outdoor recreation. The department assesses our energy and mineral resources and works to ensure that their development is in the best interests of all our people by encouraging stewardship and citizen participation in their care. The department also has a major responsibility for American Indian reservation communities and for people who live in island territories under U.S. administration.



EXPERIENCE YOUR AMERICA