



"To perpetuate his memory and his contributions to the United States."
-U.S. Public Law 106-79

Commissioners

Rocco C. Siciliano, *Chairman*
Senator Pat Roberts, R/KS
Senator Joe Manchin, D/WV
Rep. "Mac" Thornberry, R/TX
Rep. Mike Simpson, R/ID
Rep. Sanford Bishop, Jr., D/GA
Rep. Mike Thompson, D/CA
Susan Banes Harris, *Interim Vice Chair*
Alfred Geduldig
Bruce Cole

Advisory Committee

Co-Chairs

Gen. P.X. Kelley, USMC (Ret.)
Frank Fahrenkopf, Jr.

Vice Chair

Leonard L. Boswell
David M. Abshire
Nancy Kassebaum Baker
Robert F. Bennett
Judy Burgess
Harold Burson
William T. Coleman, Jr.
Robert J. Dole
Lawrence N. Field
Louis Galambos
Tom C. Korologos
L. Ralph Mecham
Edwin Meese, III
Gen. Richard B. Myers, USAF (Ret.)
Paul T. O'Day
Roswell B. Perkins
Donald H. Putnam
Gilbert A. Robinson
Lt. Gen. Brent Scowcroft, USAF (Ret.)
John Shlacs
George P. Shultz
John C. Whitehead

Carl W. Reddel, Brig. Gen., USAF (Ret.)
Executive Director

Andrew J. Demetriou, Esq.
Special Counsel

DWIGHT D. EISENHOWER

MEMORIAL COMMISSION

October 15, 2014

Peter May
Associate Regional Director
National Park Service – Lands, Resources and Planning
1100 Ohio Drive SW
Washington, DC 20242

Dear Mr. May:

In accordance with the Memorandum of Agreement among the National Park Service, the National Capital Planning Commission, the District for Columbia State Historic Preservation Officer, the Advisory Council on Historic Preservation and the Eisenhower Memorial Commission, signed during February 2012, the following annual update on the design is provided for your review and consideration.

Since the last update on the design process, the design has evolved. The following areas of consultation have evolved as indicated below:

1. Development of the memorial core – The core has evolved from the blocks with free-standing sculptures and quotations behind them to blocks with bas reliefs, with free-standing sculptural figures in front of them and with quotations on the other side of the blocks. This concept has been endorsed by the Commission of Fine Arts.
2. Further Development of the Landscape – The landscape design has changed from the March 2011 plan with swales to a more urban park, with fully accessible paved and grass areas. The historic alignment of Maryland Avenue continues to be delineated with the allee of trees located as street trees along its full length, with a tightly mowed grass ground plane along the cartway area. To further recognize the alignment of Maryland Avenue, a granite mow strip, the same size as a curb, has been located along the Maryland Avenue curb line through the site.
3. The Lighting Concept is under refinement – The lighting plan is being updated to reflect the elimination of the two side tapestries and their supporting columns; and the addition of the two free-standing columns. The lighting plan continues to be developed in relation to the requirement that the Capitol remain the brightest element in the area. The revised concept is to be presented at a November 6, 2014 NCPC Information briefing.

4. The architectural development of the Ranger Contact Building – The building continues to be a low level simple building. The separate storage portion has been removed. The building will be more screened from the memorial core in the revised landscape plan.

5. Development of the LBJ Promenade – There will be no canopy at the overlook in front of the LBJ Building. Stadium seating has been added at the west end for reading groups and for use by Park Rangers with tour groups. An AV hookup component has been added to facilitate large meetings in the central portion of the Promenade. Provision for display cases at the west end and for café seating at the east end have been made.

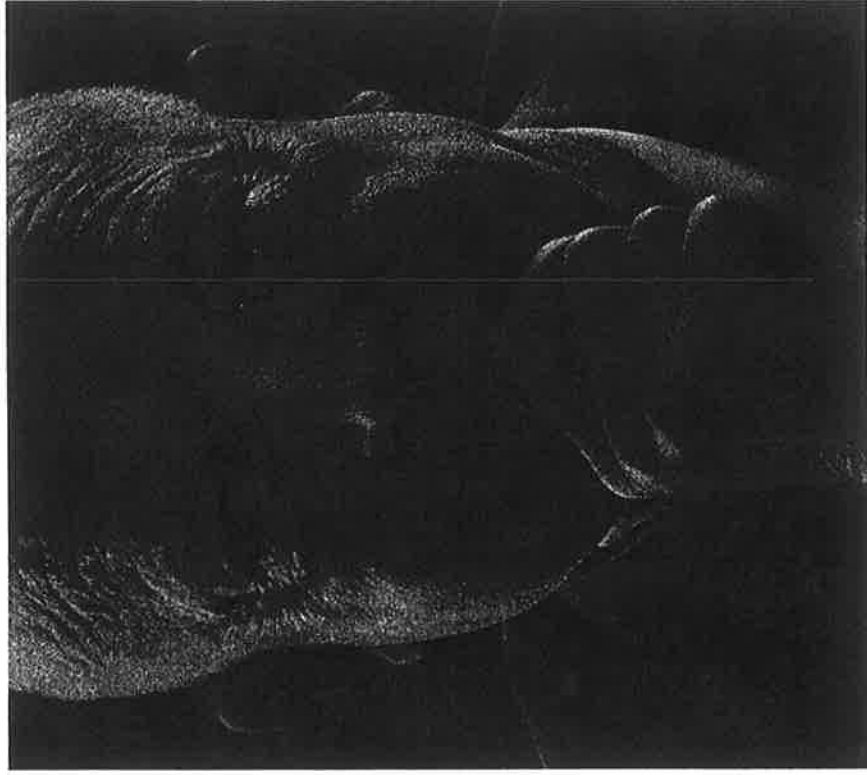
6. Changes made in response to NCPC preliminary design review – To respond to both NCPC and CFA comments, the east and west tapestries have been removed. Two free-standing columns have been added to create the setting for the memorial core. Views to the surrounding buildings are less obstructed. The northwest column has been pulled behind the building line of the FAA and Cohen buildings adjacent to the memorial site along Independence Avenue. The framed vista to the Capitol along the Maryland Avenue Right of Way has been increased to 135 feet.

We think that these items do not create any further adverse effects; in fact some of them reduce the adverse effects previously noted by NPS. Images of the design as it has evolved are attached. Please review them and take action as listed in the MOA. We are hopeful for your favorable review as we plan to submit this amended design for consideration by the National Capital Planning Commission in December 2014.

Respectfully,


Victoria Tigwell
Deputy Executive Director

Enclosure







EISENHOWER MEMORIAL

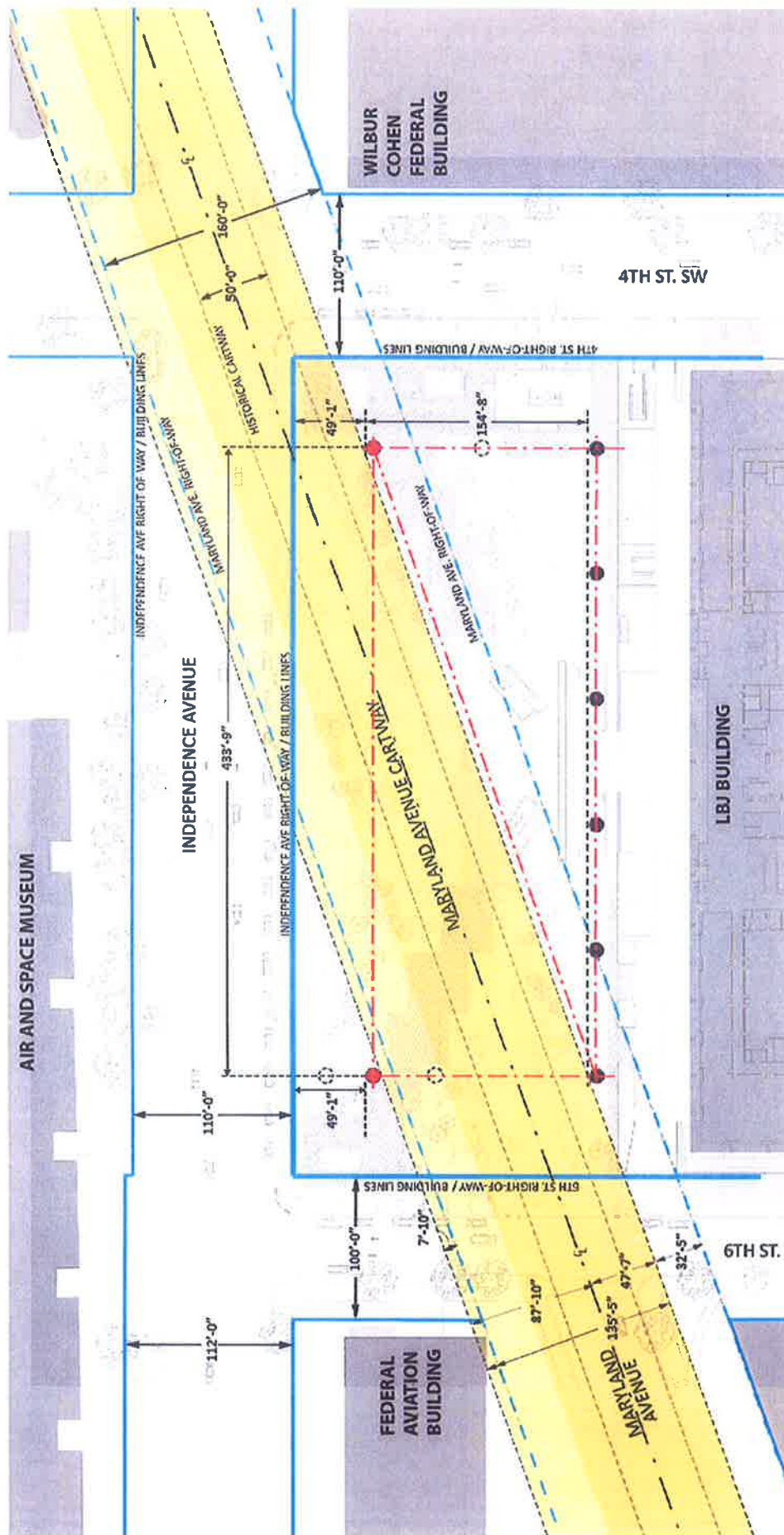
SECTION 106 MOA ANNUAL UPDATE 2014

PLAN-DIAGRAM

KEY:

-  RIGHTS-OF-WAYS
-  ORIGINAL LOCATION OF COLUMNS
-  REVISED COLUMN LOCATIONS
-  COLUMN LOCATIONS

- The northern singular columns to be located fully within the planes of the adjacent building facades.



PLAN-DIAGRAM

- The design revisions widen the Maryland Avenue viewshed from 95' to 135' wide creating a proportionally *horizontal* framed view towards the Capitol building.
- 2013 MOA Update concept included three columns that were within the 160' ROW. The revised plan includes only two columns within the southern edge of the ROW.
- The southwest column and northeast column align parallel to the center line of Maryland Avenue.

- KEY:
- RIGHTS-OF-WAYS
 - ORIGINAL LOCATION OF COLUMNS
 - CENTER LINE OF COLUMNS
 - REVISED COLUMN LOCATIONS
 - COLUMN LOCATIONS

DESIGN REVISION
2014 MOA UPDATE

EISENHOWER MEMORIAL
Gehry Partners • AECOM Joint Venture



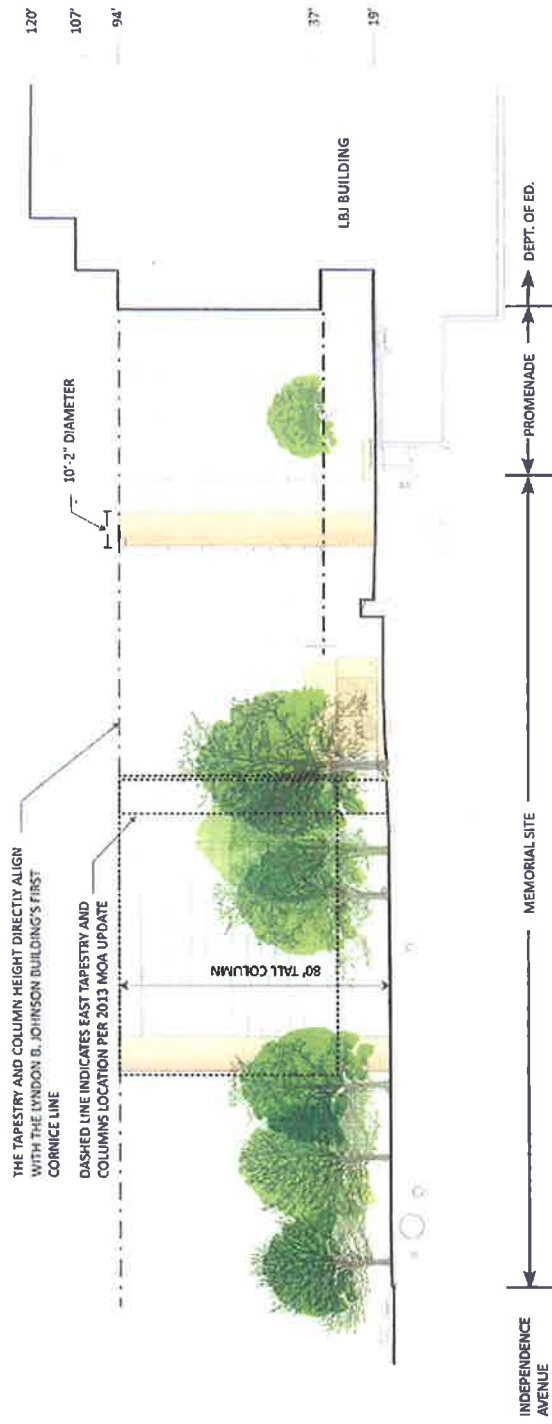
VIEW ALONG MARYLAND AVENUE TOWARDS CAPITOL

2013 MOA UPDATE

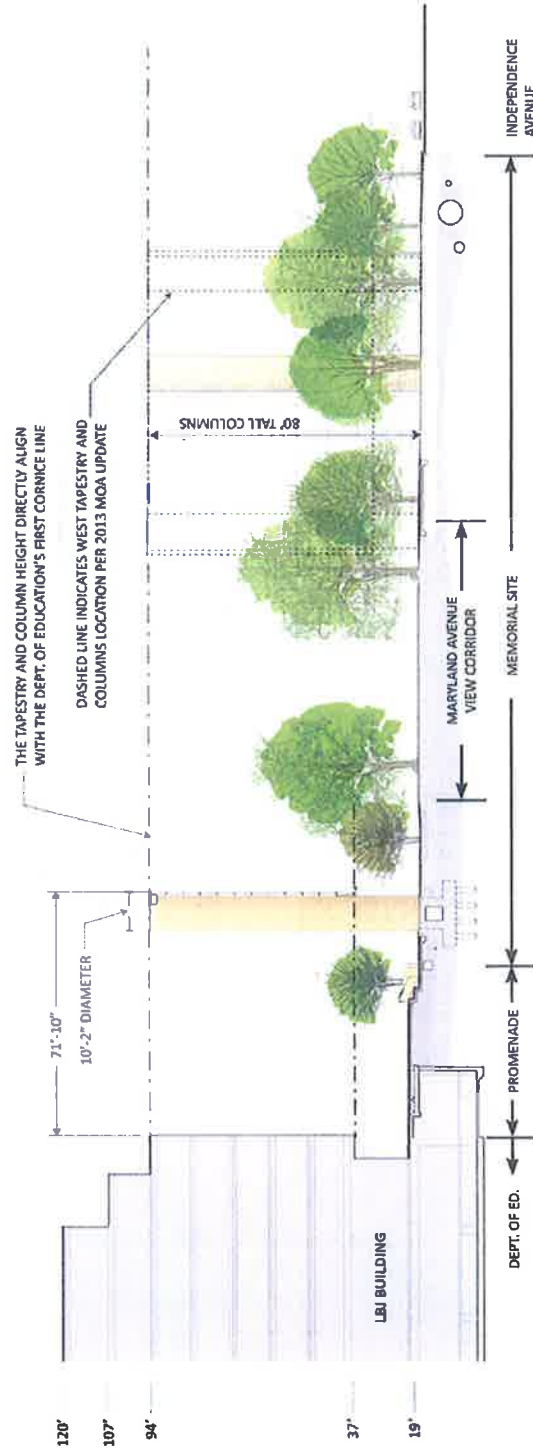


VIEW ALONG MARYLAND AVENUE TOWARDS CAPITOL - The design revisions widen the Maryland Avenue viewshed from 95' to 135' wide, creating a proportionally *horizontal* frame to the Capitol building.

2014 MOA UPDATE



SECTION THROUGH SITE LOOKING EAST



SECTION THROUGH SITE LOOKING WEST

The tapestry scale directly relates to the Department of Education Building. The top elevation of the tapestry aligns with the first cornice line, framing the Promenade. The bottom of the tapestry elevation matches the Department of Education Building first floor soffit.

RELATIONSHIP OF TAPESTRY AND COLUMNS TO THE SURROUNDING BUILDINGS

EISENHOWER MEMORIAL

Gehry Partners • AECOM Joint Venture

2014 MOA UPDATE

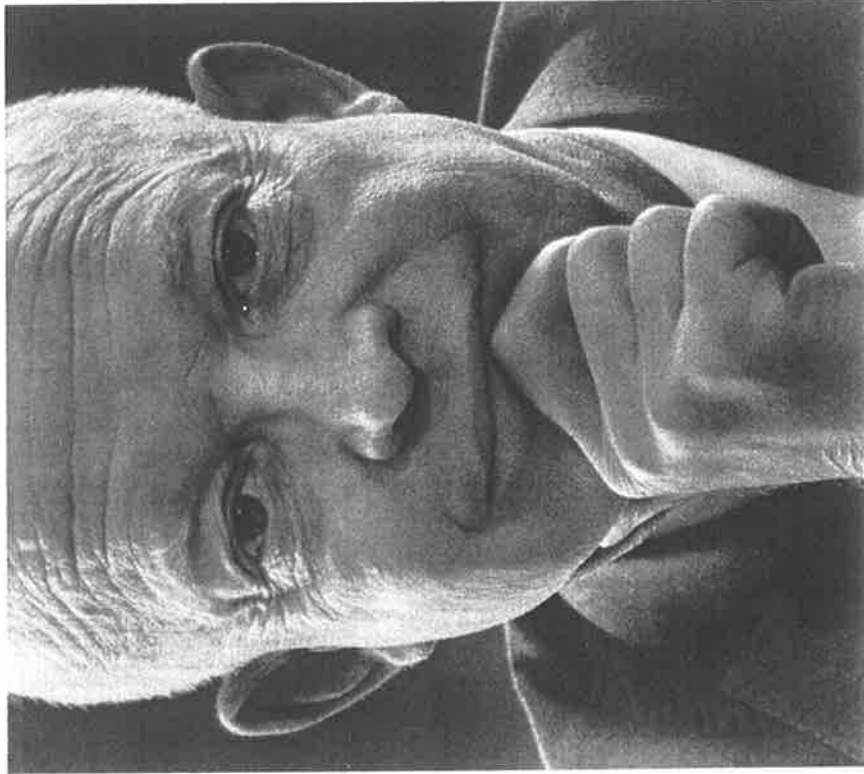


VIEW TOWARDS THE MEMORIAL FROM MARYLAND AVENUE

The central view from Maryland Avenue, immediately north of the overlook wall, reveals the unified composition of the Memorial Core. The grove of large canopy trees at the center stand as a unifying landscape element that also provides shade to the gathering space.

2.3 - URBAN PARK AND PEDESTRIAN EXPERIENCE

EISENHOWER MEMORIAL
Gehry Partners • AECOM Joint Venture



EISENHOWER MEMORIAL

NATIONAL CAPITAL PLANNING COMMISSION

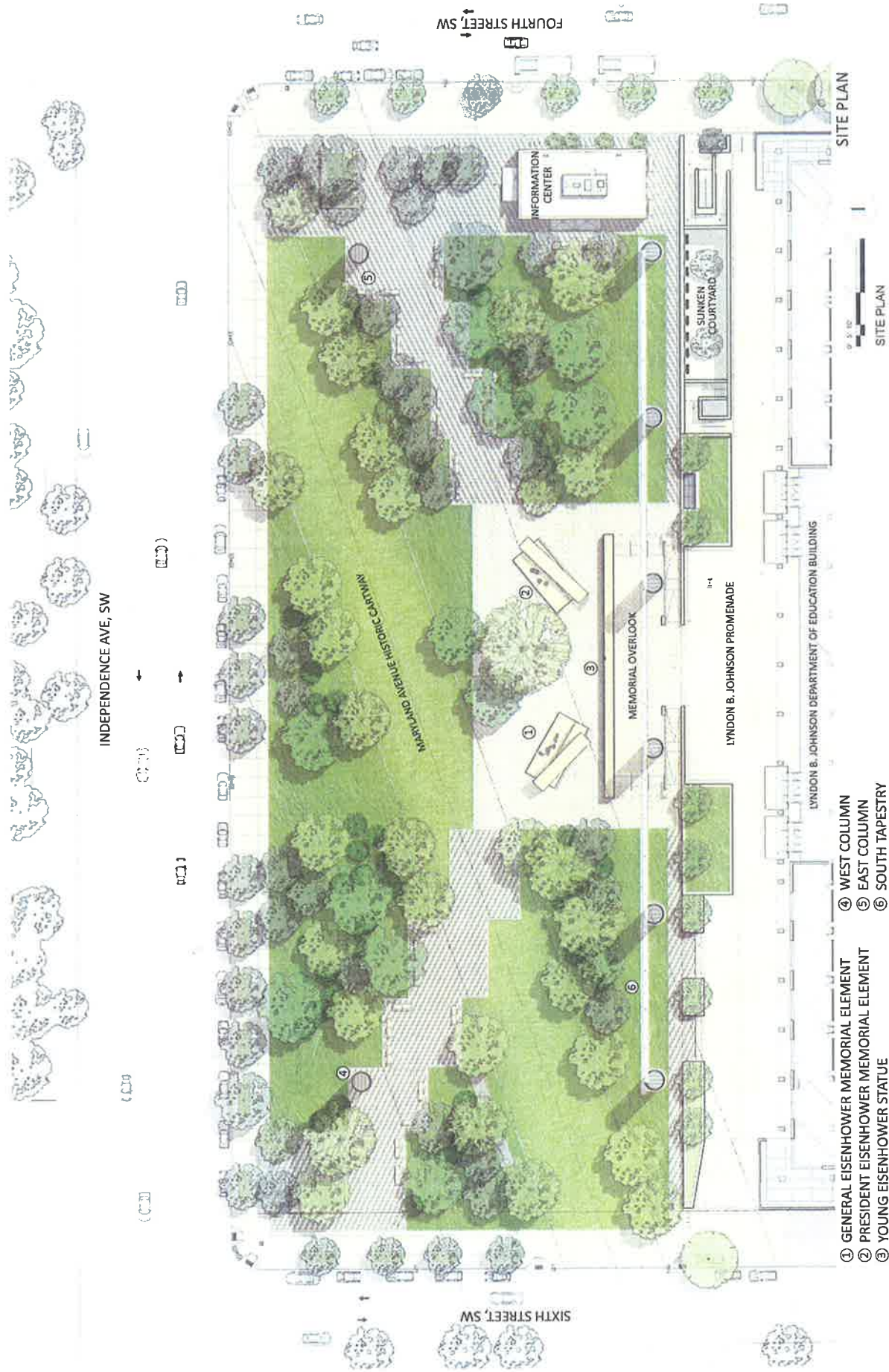
SUPPLEMENTAL SUBMISSION FOR PRELIMINARY DESIGN REVIEW

SUBMISSION DATE: AUGUST 29, 2014

MEETING DATE: OCTOBER 2, 2014

EISENHOWER MEMORIAL

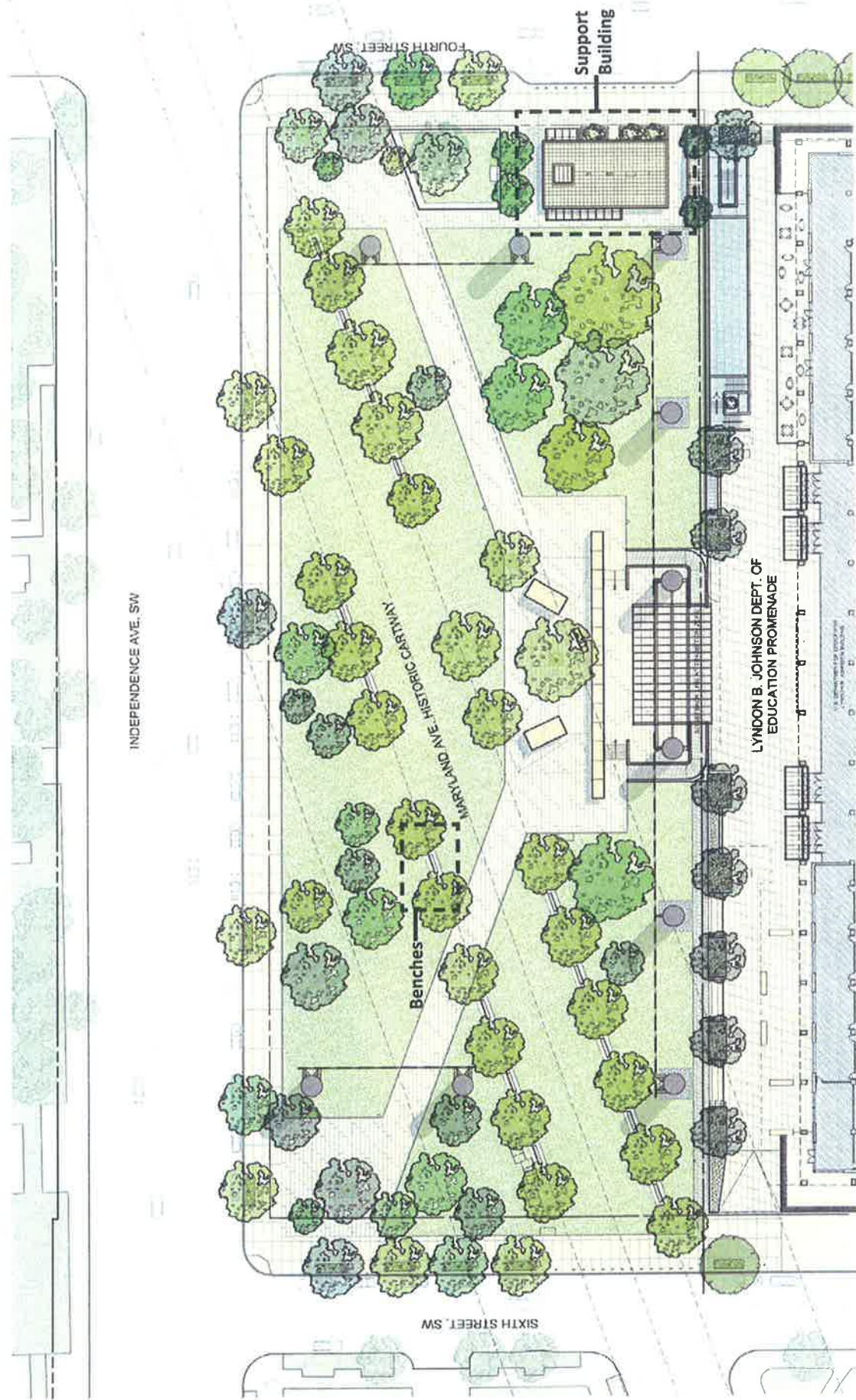
Gehry Partners • AECOM Joint Venture



2.1 - OVERVIEW OF DESIGN RESPONSE

EISENHOWER MEMORIAL

Gehry Partners • AECOM Joint Venture



OCTOBER 2011 DESIGN
SITE PLAN

U.S. COMMISSION OF FINE ARTS

ESTABLISHED BY CONGRESS 17 MAY 1910

401 F STREET NW SUITE 312 WASHINGTON DC 20001-2728 202-504-2200 FAX 202-504-2195 WWW.CFA.GOV

23 October 2014

Dear Ms. Mendelson-Ielmini:

In its meeting of 16 October, the Commission of Fine Arts reviewed a proposal for revisions to the previously approved concept design for the Dwight D. Eisenhower National Memorial, revisions that were approved on 2 October by the National Capital Planning Commission. The Commission of Fine Arts approved the submission with the following recommendations for the development of the design.

In their discussion, the Commission members agreed that the removal of the two previously proposed side tapestry elements constitutes a substantial improvement of the design, placing greater emphasis on the main tapestry across the southern side of the site and creating unobstructed diagonal approaches to the memorial core from the corners. Characterizing the tapestry as a strong, poetic idea that now serves clearly as a backdrop for the commemorative elements, they reaffirmed the need for the two remaining columns to define the memorial precinct spatially within the urban context. They acknowledged the testimony of several witnesses concerning the proposal's impact on the Maryland Avenue right-of-way aligned to the Capitol dome; they found the proposal—a presidential memorial in a civic park—would enhance this axis significantly over its historic condition.

In addition to their standing comments from 20 February 2014, the Commission members made several recommendations to be addressed in the development of the revised concept. They emphasized that the monumental stone columns—of which two would now be freestanding objects—must transcend any utilitarian character and be articulated to be meaningful and beautiful in themselves as they contribute to the commemorative purpose of the memorial. They continued to request significant development to clarify the conceptual design of the landscape, beginning with an analysis of the visitor's experience in progressing through the site—including the layers of tree plantings, the design of the ground plane, and the unfolding view of the memorial core elements as approached from the diagonal paths.

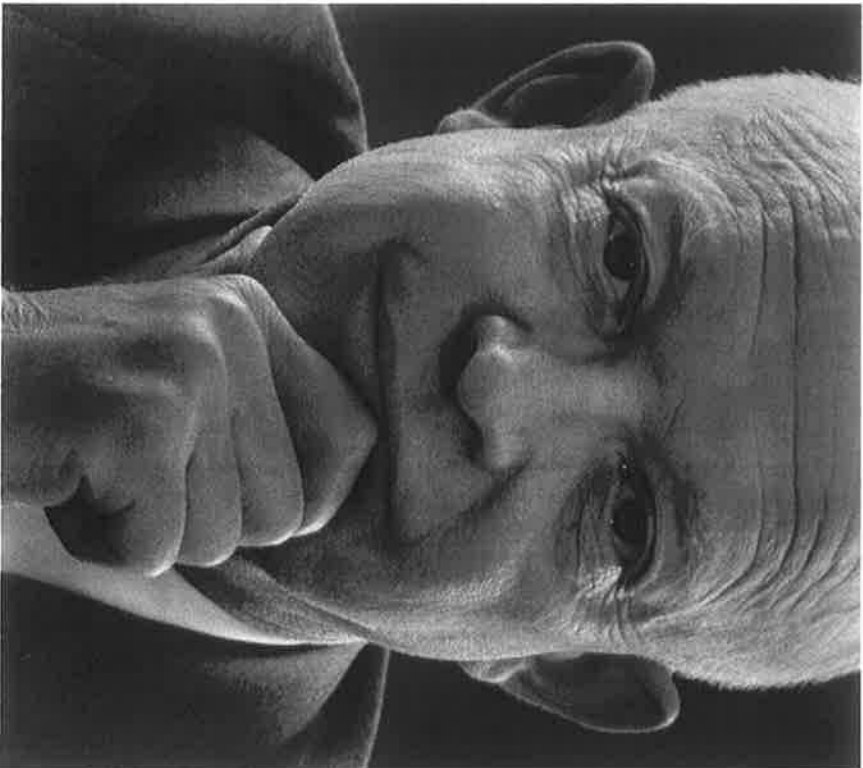
With its approval of the revised concept design, the Commission anticipates the review of the next submission comprising a comprehensive design presentation of the memorial's commemorative features—including sculpture, tapestries, columns, and landscape elements—that addresses its comments from this review and from that of February 2014.

As always, the staff is available to assist you with the next submission.

Sincerely,



Thomas E. Luebke, FAIA
Secretary



EISENHOWER MEMORIAL

U.S. COMMISSION OF FINE ARTS

CONCEPT DESIGN RE-SUBMISSION

SUBMISSION DATE: OCTOBER 02, 2014

MEETING DATE: OCTOBER 16, 2014

EISENHOWER MEMORIAL

Gehry Partners • AECOM Joint Venture

TABLE OF CONTENTS

1. EXECUTIVE DESIGN SUMMARY	
1.1 Executive Design Summary	4
1.2 Summary of Design Revisions	6
2. OVERVIEW OF DESIGN RESPONSE	
2.1 April 2014 Design Presented to NCPC	8
2.2 Overview of Design Response	10
2.3 Urban Park and Pedestrian Experience	16



The proposed Eisenhower Memorial site is a four acre site in the Southwest district of Washington D.C. Located on Independence Avenue and Maryland Avenue, bound by 4th and 6th Streets SW, and Lyndon B. Johnson Department of Education building, the site has a unique urban situation unlike any other major Memorials. The site is directly on the Maryland Avenue axis, an important historical corridor with a viewshed to the U.S. Capitol.

To address the urban scale of this large four acre site and create an autonomous Presidential Memorial experience, the design proposes a unique commemorative art element with a stainless steel tapestry supported on large columns depicting scenes from Eisenhower's home in Kansas. The colonnade and tapestry create an urban room within the scale of the surrounding precinct and frame the entire site to distinguish the Memorial in a unified space. The columns are carefully arranged along Maryland Avenue running through the site, to frame the view to the Capitol dome.

At the center of the project site is the contemplative Memorial space, where Eisenhower's legacy unfolds in an intimate setting. Heroic free standing sculptures, bas reliefs, and quotes celebrate Eisenhower's contributions to our nation as the 34th President and the Supreme Commander of the Allied Forces. Eisenhower as a young man is seated on a wall, looking towards his future achievements.

Eisenhower's humility, values, and achievements are what set him apart...so these are what will set the monument apart.

This is a monument to his ideas. To the words that he left with us. To the principles that guided his decisions and fueled his remarkable achievements.

The treatment of Maryland Avenue is a significant organizing component of the project. Maryland Avenue will be closed to street traffic, allowing the disparate parcels to transform the area into an inviting green space. Maryland Avenue will be restored to its original position and will be framed vertically with an allée of mature trees that in turn frame the Capitol dome.

Eisenhower Square is a memorial conceived as an urban park in an area of the city greatly needing a revitalized pedestrian experience. The park is designed to guide visitors through key view corridors across the site. The landscape design is distinguished by tree species reminiscent of the Midwest that provide ample shade and definition to the street edges and open spaces in the park.

To the south is an elevated area in front of the Lyndon B. Johnson building that becomes a new forecourt for the

Department of Education and a pedestrian Promenade with programming that supports outreach, outdoor seating and gathering areas.

Proof of concept mock-ups were created for the tapestry to demonstrate artistic quality, intent, and transparency established for this commemorative art element. The tapestry has technically developed since 2011 when the mock-ups were initially created. The engineering and material testing has been found by NCPC Commission to demonstrate the tapestry meets the Commemorative Works Act durability criteria.

Since the NCPC Commission meeting in April of 2014, the design team has made significant revisions to the position and scale of the Memorial tapestry elements. The design features including the tapestry, sculpture, and quotations -- in addition to the landscape design, are the result of rigorous research in response to agency review comments. Each element is designed to create the most effective and powerful experience for visitors. The design team has met with NCPC staff on multiple occasions to review the proposed revisions. The resulting Dwight D. Eisenhower Memorial design has been revised to satisfy the goals of the seven design principles established for this site in 2006 by the National Capital Planning Commission to preserve and enhance the unique character of this site and establish a new green space within the context of L'Enfant's masterplan for Washington D.C.

1.1 - EXECUTIVE DESIGN SUMMARY

EISENHOWER MEMORIAL

Gehry Partners • AECOM Joint Venture

CURRENT DESIGN



TREE ALLÉE
Trees line the historic Maryland Avenue cartway, framing the Capitol vista.



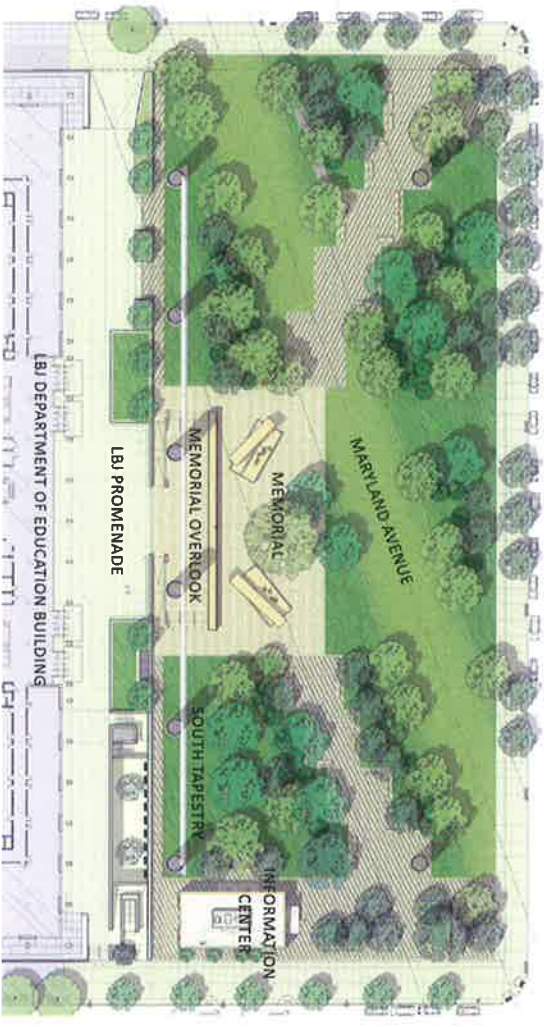
TAPESTRY MOCKUP
The unique qualities of the stainless steel tapestry create a legible image while maintaining a level of transparency.



TAPESTRY & COLUMNS
The unique defining element of Eisenhower square. The northern columns mark the park entry paths leading to the center of the Memorial.



MEMORIAL CORE
The commemorating area of the site, where the public can view Eisenhower's legacy in a shaded intimate setting.



EISENHOWER MEMORIAL

Gehry Partners • AECOM Joint Venture

EXECUTIVE DESIGN SUMMARY - 1.1

SUMMARY OF DESIGN REVISIONS

The Memorial design has evolved since the February 2014 CFA meeting which focused primarily on landscape design. In response to the April 2014 NCPC Commission Action, the design was revised to address the three design principles the Commission found inconsistent with the previous submitted design. The design revisions are summarized below:

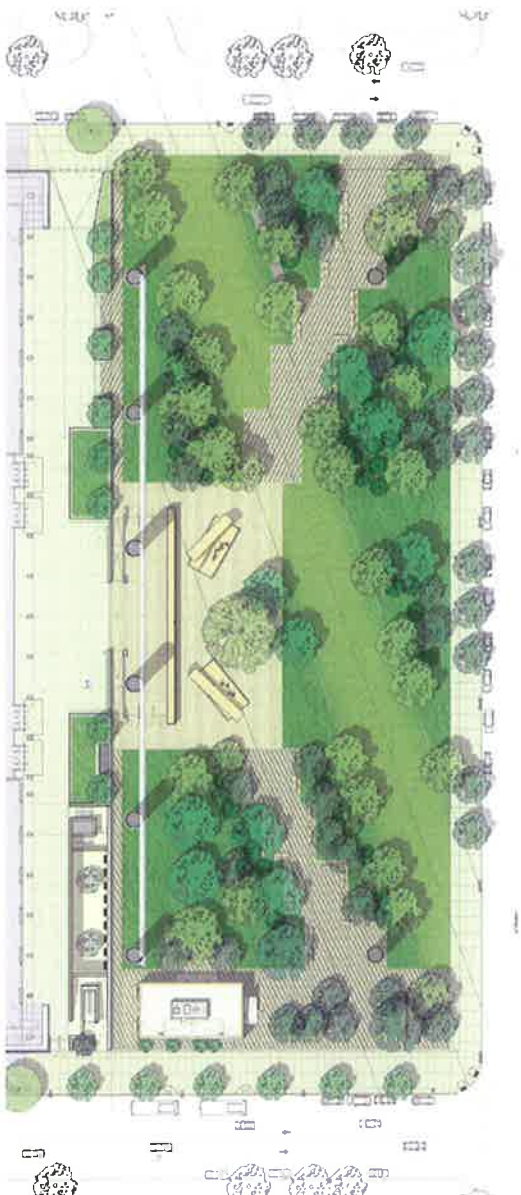
1. The revised design eliminates the East and West tapestries allowing the influence of the adjacent buildings to define and unify the site.
2. Two singular columns replace the East and West tapestries, defining the northern edge of the Memorial site. The proposed northern columns are fully located within the planes of the adjacent building facades.
3. The revised design has widened the view corridor from 95' to 135'. This design revision creates a more proportionally *horizontal* framed view of the U.S. Capitol.

Due to the significant changes in response to NCPC, this submission is focused on an overview of the Memorial design revisions for the Commission of Fine Arts to review and confirm prior to detailed development of the art elements and further refinement of the landscape design in response to the Commission comments from February 2014.

The design team intends to return to the Commission with a comprehensive and detailed review of the Memorial's commemorative art elements in the near future.



OCTOBER 2014 - REVISED DESIGN



1.2 - SUMMARY OF DESIGN REVISIONS

EISENHOWER MEMORIAL

Gebry Partners • AECOM Joint Venture

CURRENT DESIGN

SECTION 2: OVERVIEW OF DESIGN RESPONSE

2.1 April 2014 Design Presented to NCPC

2.2 Overview of Design Response

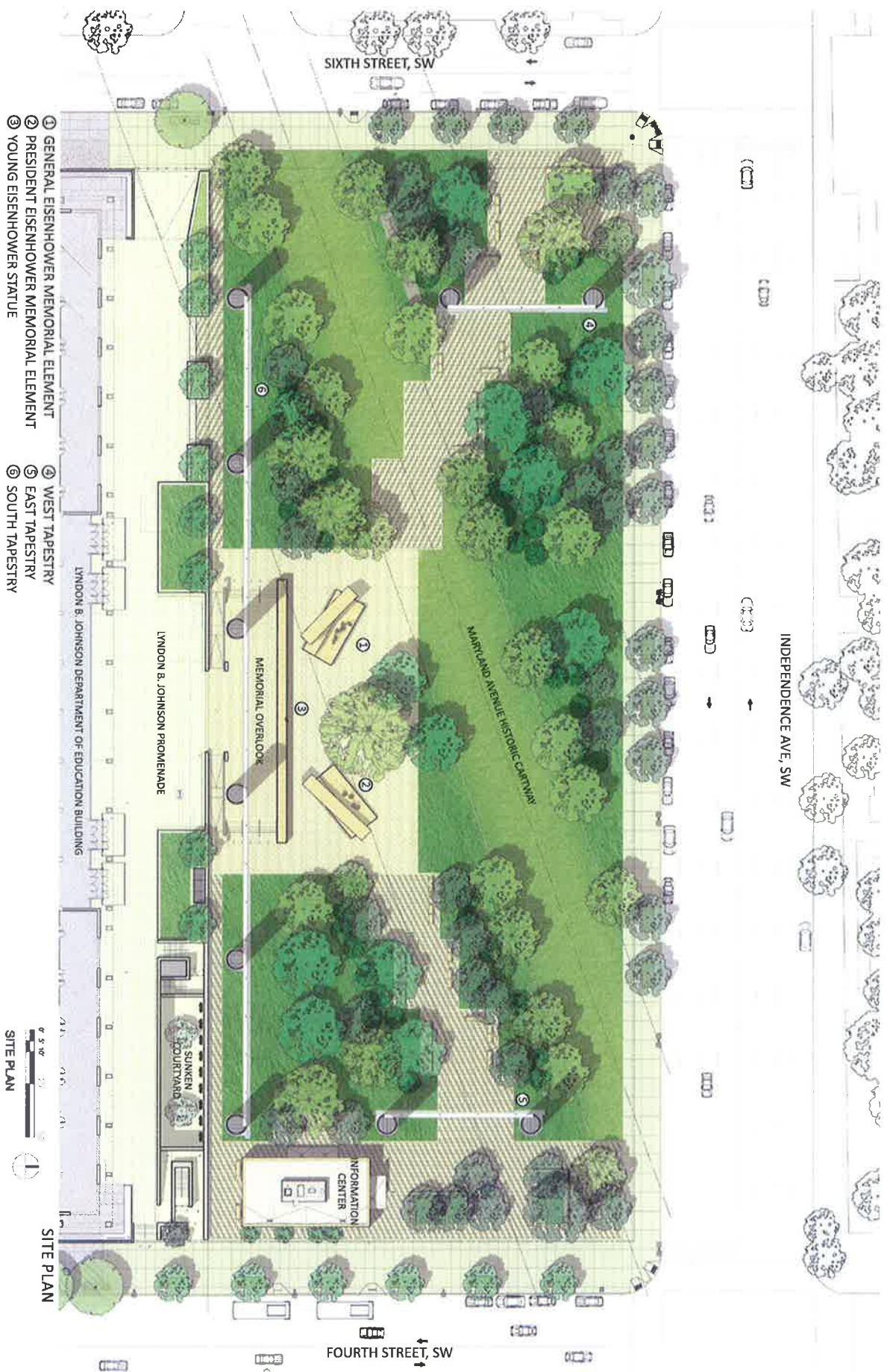
2.2 Urban Park and Pedestrian Experience

This section provides a overview of the Memorial design response to the NCPC Commission meeting in April 2014. The design revisions are primarily limited to the tapestry and colonnade configuration on the site.

The overall design intent for the Eisenhower Memorial remains the same for the following areas of the project:

- Memorial Core
- Landscape Design
- Information Center
- Lyndon B. Johnson Promenade

The design team anticipates further updates and minor refinements to the design to address the comments from the U.S. Commission of Fine Arts provided previously and additional feedback from NCPC.



2.1 - APRIL 2014 DESIGN
PRESENTED TO NCPC

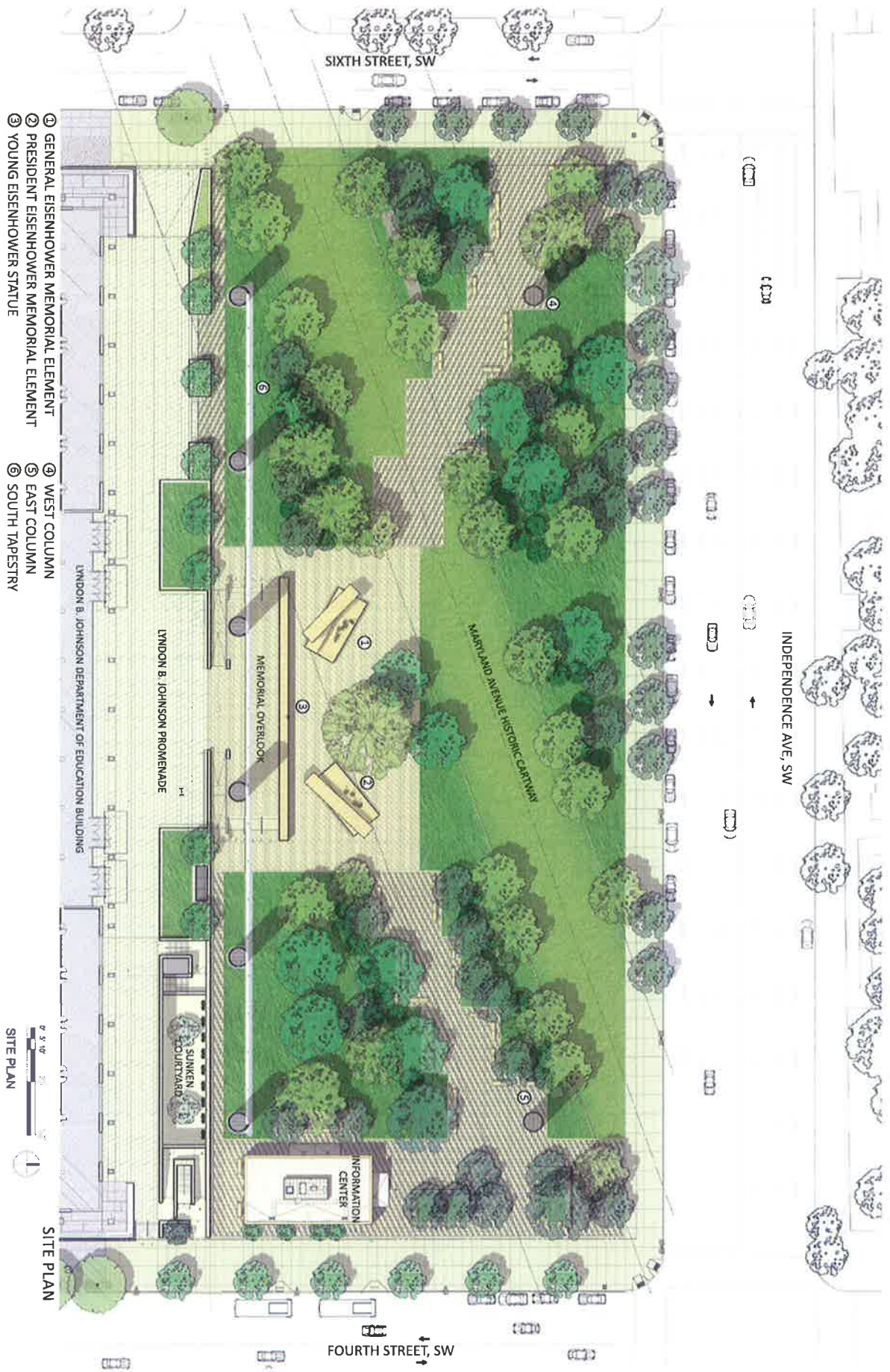


MODEL PHOTOGRAPH - AERIAL VIEW

EISENHOWER MEMORIAL

Gehry Partners • AECOM Joint Venture

APRIL 2014 DESIGN - 2.1
PRESENTED TO NCPC



2.2 - OVERVIEW OF DESIGN RESPONSE

EISENHOWER MEMORIAL

Gehry Partners • AECOM Joint Venture

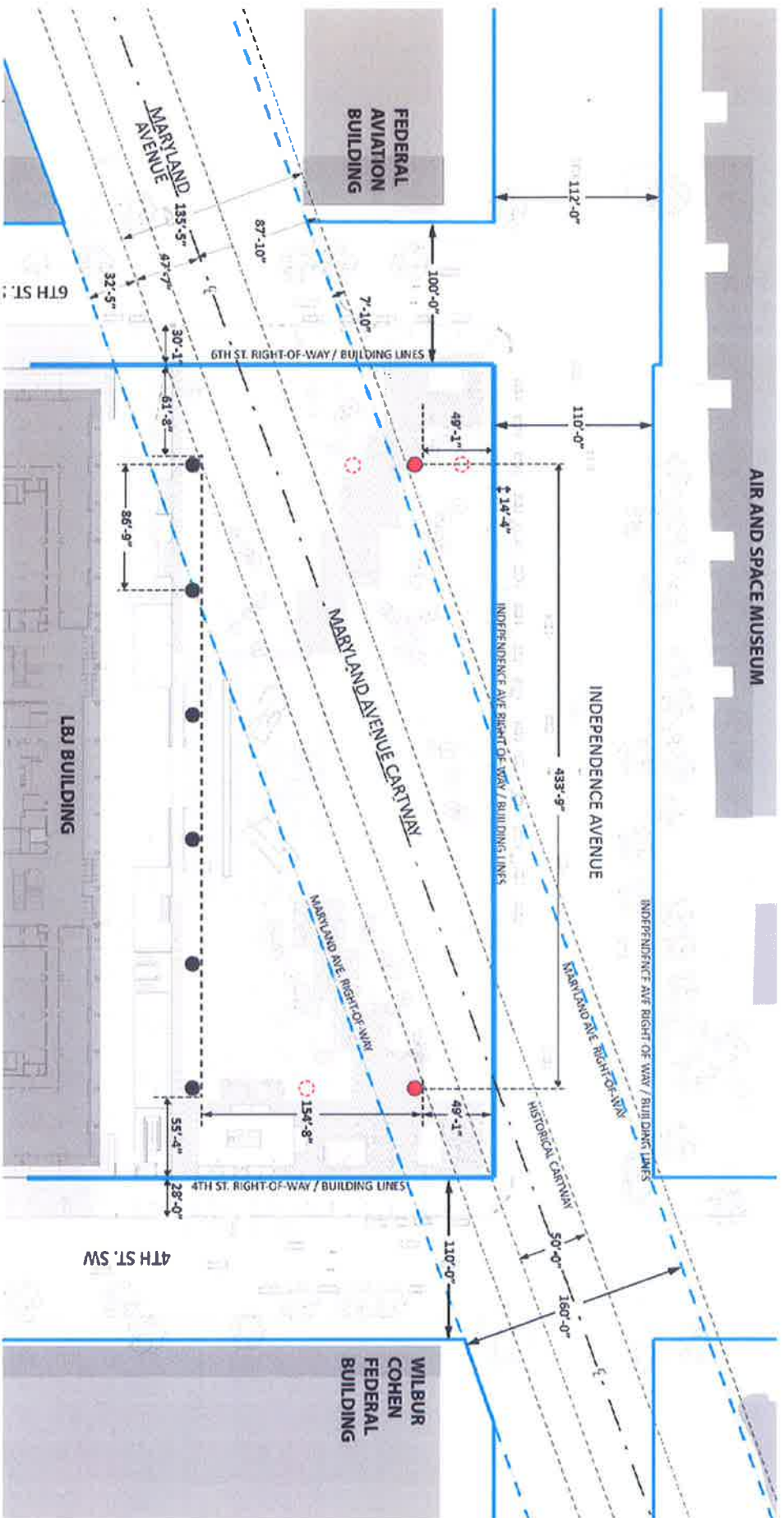


AERIAL VIEW - The design revisions eliminate the East and West tapestries, allowing the influence of the adjacent buildings to help define and unify the site.

EISENHOWER MEMORIAL

Gehry Partners • AECOM Joint Venture

OVERVIEW OF DESIGN RESPONSE - 2.2



PLAN-DIAGRAM

KEY:

- RIGHTS-OF-WAYS
- ORIGINAL LOCATION OF COLUMNS
- REVISED COLUMN LOCATIONS
- COLUMN LOCATIONS

DESIGN REVISIONS IN RESPONSE TO NCPC APRIL 3, 2014 MEETING

- The design revisions eliminate the East and West tapestries, allowing the influence of the adjacent buildings to define and unify the site.
- The northern singular columns are located fully within the planes of the adjacent building facades.
- The design revisions widen the Maryland Avenue viewshed from 95' to 135' wide creating a proportionally *horizontal* framed view towards the Capitol building.
- The April 2014 concept included three columns that were within the 160' ROW. The revised plan includes only two columns within the southern edge of 160' ROW.

2.2 - OVERVIEW OF DESIGN RESPONSE

EISENHOWER MEMORIAL

Gehty Partners • AECOM Joint Venture



AERIAL VIEW TOWARDS SOUTHWEST - The northern singular columns are located fully within the planes of the adjacent building facades.

EISENHOWER MEMORIAL

Gehry Partners • AECOM Joint Venture

OVERVIEW OF DESIGN RESPONSE - 2.2



VIEW ALONG MARYLAND AVENUE TOWARDS CAPITOL - The design revisions widen the Maryland Avenue viewshed from 95' to 135' wide, creating a proportionally *horizontal* framed view to the Capitol building.

2.2 - OVERVIEW OF DESIGN RESPONSE



MARYLAND AVENUE VIEWED TOWARDS CAPITOL

EISENHOWER MEMORIAL

Gehry Partners • AECOM Joint Venture

OVERVIEW OF DESIGN RESPONSE - 2.2

2.3 URBAN PARK AND PEDESTRIAN EXPERIENCE

The Eisenhower square will be experienced as a public realm open to three sides: 4th and 6th Streets and Independence Avenue SW. An ample setting for the Department of Education headquarters in the Lyndon B. Johnson building is provided on the south frontage with an urban pedestrian promenade carried the length of the building.

The square is developed as an active urban park, a green space with trees and a grassy ground plane with broad walkways cutting through the landscape. The park creates a contemplative setting for visitors to experience the Memorial within the large urban site. A change in pavement material at the center of the park distinguishes the Memorial's commemorative area where Eisenhower's story unfolds in sculpture, bas relief and inscriptions. The park landscape design is integral to the Memorial's character, composition, and intent.

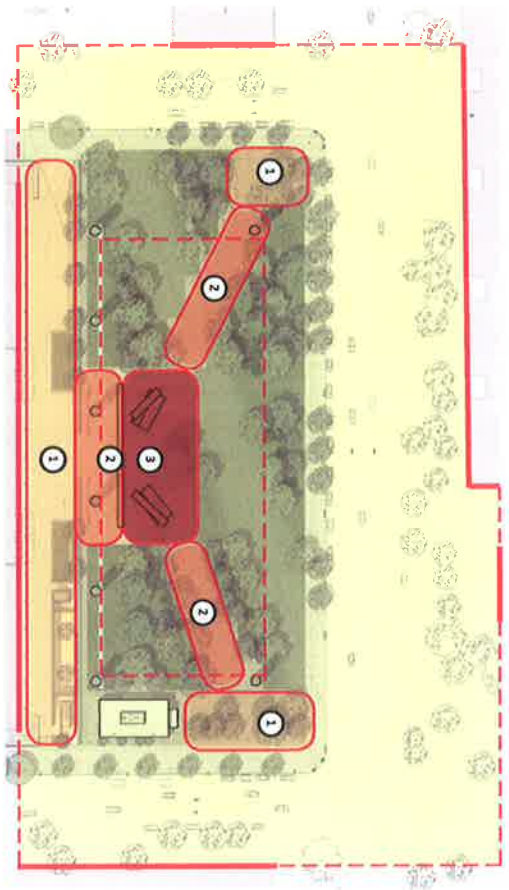
The park landscape inverts the traditional memorial temple in a grove. The open room created by the south tapestry and colonnade engages passers-by on city streets at the urban scale. The interior park is a powerful element of the overall Memorial design. The park's gathering spaces, shaded oasis and walkways will provide opportunities for experiencing the Memorial through educational, artistic, and natural content. The urban park with its many civic amenities, will help bring new life to the city's Southwest district.

The park is designed to enhance the pedestrian visitor experience to the Memorial. Many visitors will arrive from the north and adjacent museums and other destinations along the National Mall. The entrance plazas at the northeast and northwest corners of the site are designed for visitors to gather before entering the park grounds and Memorial. Visitors will also arrive by bus along 4th street near the Information Center.

Two single columns at the northern entrance plazas signal the entrance to the approach walks that direct the visitor towards the Memorial core and through the park. The understory tree canopy shapes the intimate experience and directs views to the Memorial elements. The walkways are designed to encourage social gatherings for visitors to stop and enjoy the park.

The Lyndon B. Johnson Promenade is a separate and distinct pedestrian forecourt to the Department of Education building. The pedestrian promenade includes seating and other amenities to serve the building occupants and engage Memorial visitors. The Promenade also offers elevated views northward out to the Memorial.

FORMAL PEDESTRIAN APPROACHES THROUGH THE PARK

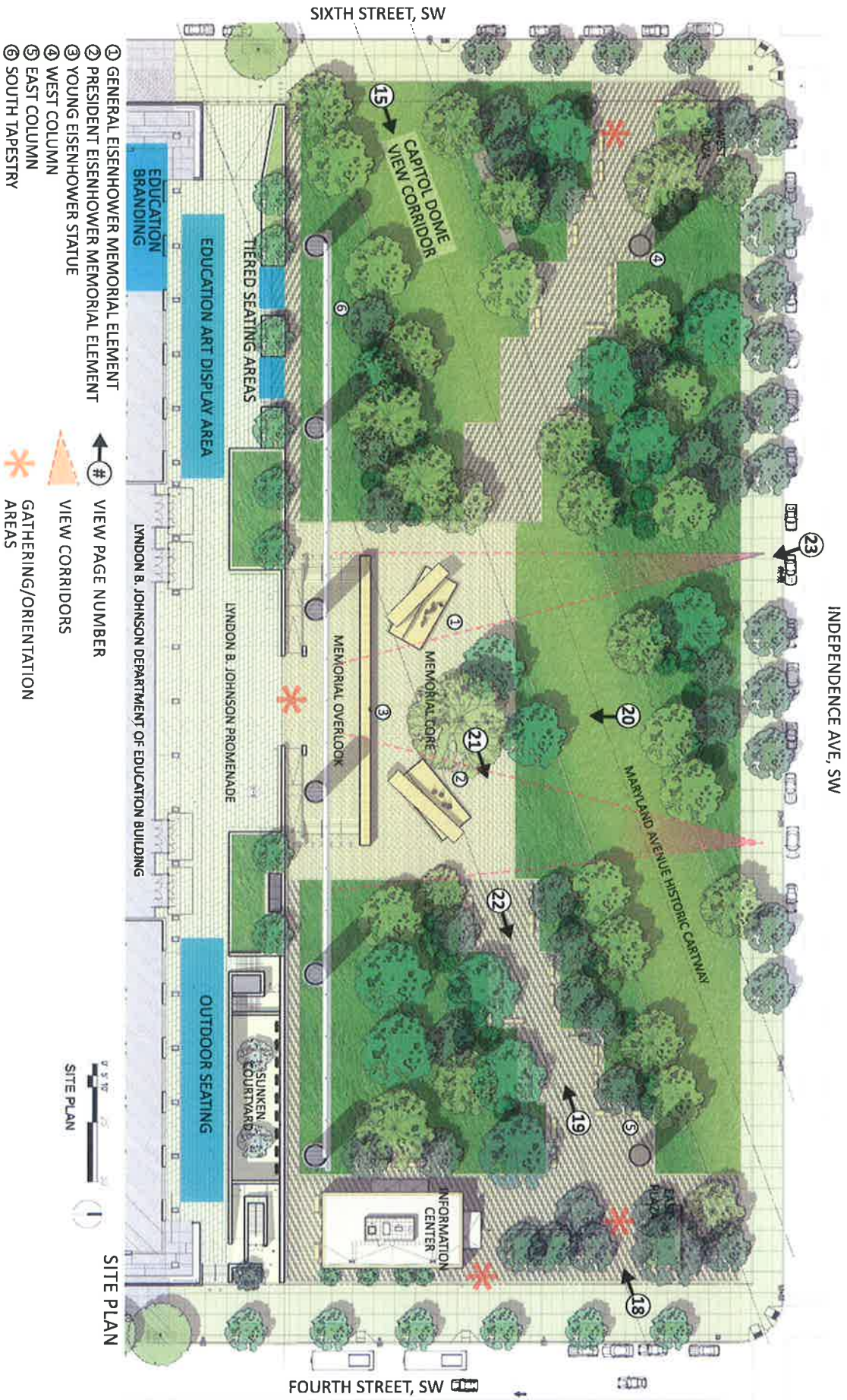


1. Urban Transition Areas
2. Memorial Park Approach Walkways
3. Memorial Commemorative Area

2.3 - URBAN PARK AND PEDESTRIAN EXPERIENCE

EISENHOWER MEMORIAL

Gehry Partners • AECOM Joint Venture





MEMORIAL ENTRANCE PLAZA AT 4TH STREET & INDEPENDENCE AVENUE

The northern singular columns mark the entrance pathways into the Memorial park.

2.3 - URBAN PARK AND PEDESTRIAN EXPERIENCE

EISENHOWER MEMORIAL

Gehty Partners • AECOM Joint Venture



The Memorial approach walkways are designed with ample seating and social gathering areas. The understory trees create a sense of enclosure and focus views to the Memorial elements at the center of the park.

VIEW TOWARDS MEMORIAL LOOKING WEST

EISENHOWER MEMORIAL

Gehry Partners • AECOM Joint Venture

URBAN PARK AND PEDESTRIAN EXPERIENCE - 2.3



VIEW TOWARDS THE MEMORIAL FROM MARYLAND AVENUE

The central view from Maryland Avenue, immediately north of the overlook wall, reveals the unified composition of the Memorial Core. The grove of large canopy trees at the center stand as a unifying landscape element that also provides shade to the gathering space.

2.3 - URBAN PARK AND PEDESTRIAN EXPERIENCE

EISENHOWER MEMORIAL

Gehry Partners • AECOM Joint Venture



VIEW TOWARDS EAST COLUMN FROM THE MEMORIAL CORE

EISENHOWER MEMORIAL

Gehry Partners • AECOM Joint Venture

URBAN PARK AND PEDESTRIAN EXPERIENCE - 2.3



VIEW TOWARDS EAST COLUMN THROUGH MEMORIAL WALKWAY

2.3 - URBAN PARK AND PEDESTRIAN EXPERIENCE



VIEW SOUTH TOWARDS MEMORIAL CORE FROM INDEPENDENCE AVENUE

EISENHOWER MEMORIAL

Gelbry Partners • AECOM Joint Venture

URBAN PARK AND PEDESTRIAN EXPERIENCE - 2.3

