



EISENHOWER MEMORIAL

SECTION 106 CONSULTATION DECEMBER 9, 2014: COMMENT RESPONSES
MARCH 2, 2015

OVERVIEW

This memorandum updates and documents the Section 106 consultation process for the Eisenhower Memorial. Organized around the key issues that were identified in the March 2012 Memorandum of Agreement (MOA), this memo includes a summary of the design modifications since December 2011, and an overview of the topics raised during the Section 106 consultation meeting held in December 2014.

STIPULATION 1

MARYLAND AVENUE

Update: The side tapestries and two columns shown in the 2012 MOA have been removed, and the remaining northernmost columns have been relocated. As a result, the Maryland Avenue view corridor has been widened 40' from 95' to 135' (see page 6).

Comments:

- With the widening of the view corridor, has the level of effect on the corridor and the L'Enfant Plan been minimized?
- With the removal of the side tapestries, has the level of effect on adjacent historic resources increased?
- Should there be paving along Maryland Avenue?
- Should there be sidewalks and benches along Maryland Avenue?

Response: Since 2012 it was considered that, as artwork, the columns do not intrude into the 160 foot wide ROW as would a building and the tapestry does not “violate” the 160 foot setback. In addition, the widened view corridor provides a more horizontal framing of the US Capitol. The Maryland Avenue corridor has been strengthened with enhanced tree planting and wider granite curbs to delineate the groomed lawn of the Avenue. These modifications mitigate the level of effect on Maryland Avenue and the L'Enfant Plan, particularly with respect to the current parking and modified pavement on Maryland Avenue, as developed in 1930.

The removal of the side tapestries allows the Wilbur Wright and Wilbur Cohen buildings to serve as frames defining the memorial site. This minimizes the visual effects on these adjacent historic buildings.

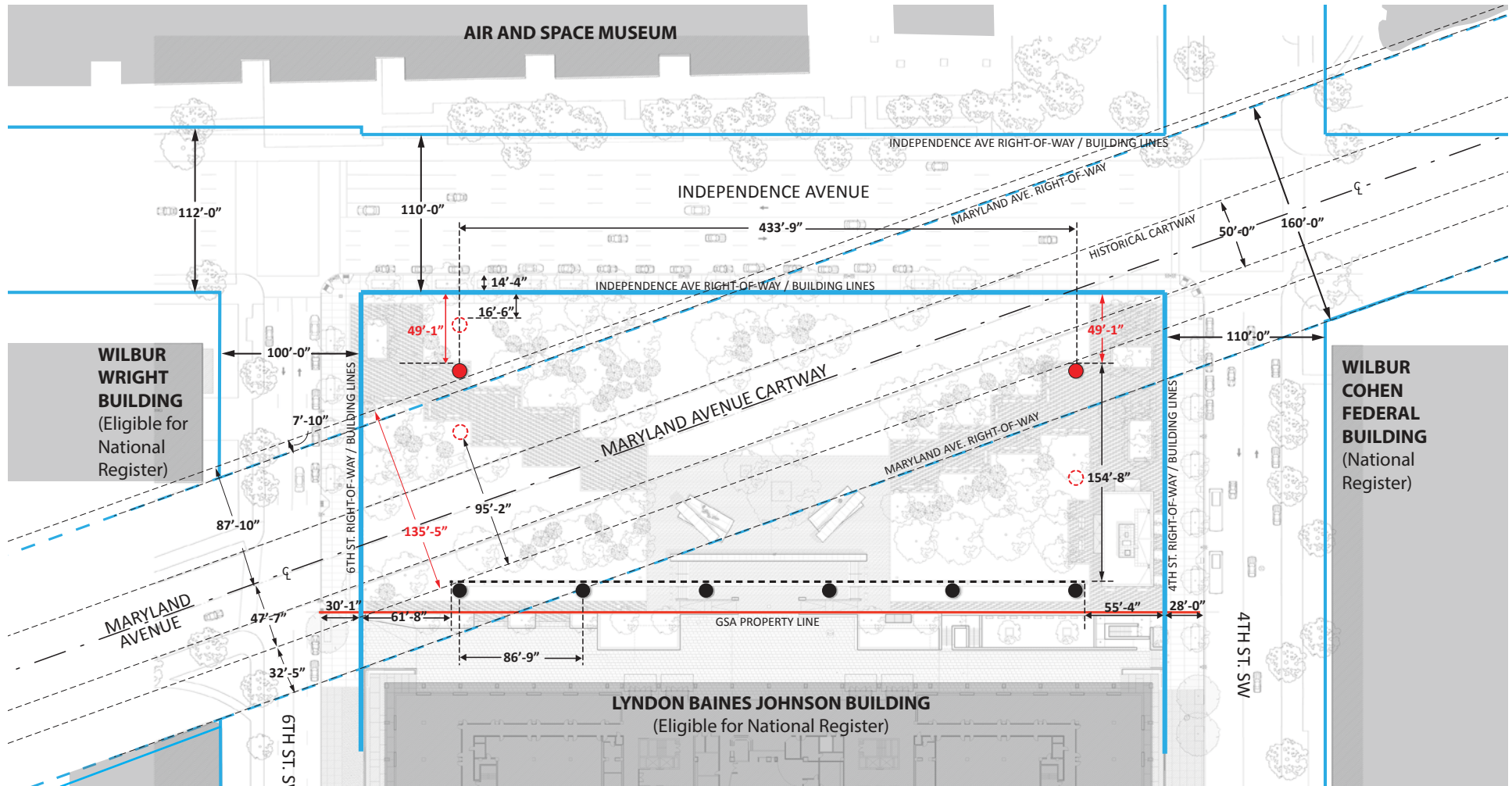
The majority of visitors are expected to enter the site from the corners on Independence Avenue. There is no destination route from the WMATA station at 7th Street. Because relatively few pedestrians are expected to traverse through the site as passersby, the turf design should accommodate pedestrian traffic levels. As a result, the design idea for the memorial is to provide two diagonal paths of small “outdoor rooms” and benches to slow pedestrian traffic as they approach the memorial core and allow for contemplative spaces.

The concept for Maryland Avenue is to provide a green experience from which to view the U.S. Capitol across the L'Enfant Plan axis. This new/restored tree-lined and groomed-lawn right of way space will provide an enhanced, less discordant experience for the public; in essence, the redesigned right of way mitigates the adverse effect. Introducing paving along Maryland Avenue, as well as sidewalks and benches, would conflict with the diagonal entry paths and reduce the amount of pervious surface on the site.

Overall, the current conditions of the site are a result of inefficient traffic movement due to the late introduction of Independence Avenue, which was a product of the McMillan Plan as it intersects with the L'Enfant Plan. Because of the widened view corridor, the reduced number of columns and tapestries, and the increased number of street trees, adverse effects on Maryland Avenue, the L'Enfant Plan, and adjacent historic buildings would be **minimized**.

STIPULATION 1: MARYLAND AVENUE

NCPC APPROVED PRELIMINARY DESIGN OCTOBER 2014



PLAN-DIAGRAM

KEY:

- RIGHTS-OF-WAYS
- ORIGINAL LOCATION OF COLUMNS
- REVISED COLUMN LOCATIONS
- COLUMN LOCATIONS
- GSA PROPERTY LINE

SUMMARY OF DESIGN REVISIONS IN RESPONSE TO NCPC APRIL 3, 2014 PRELIMINARY REVIEW

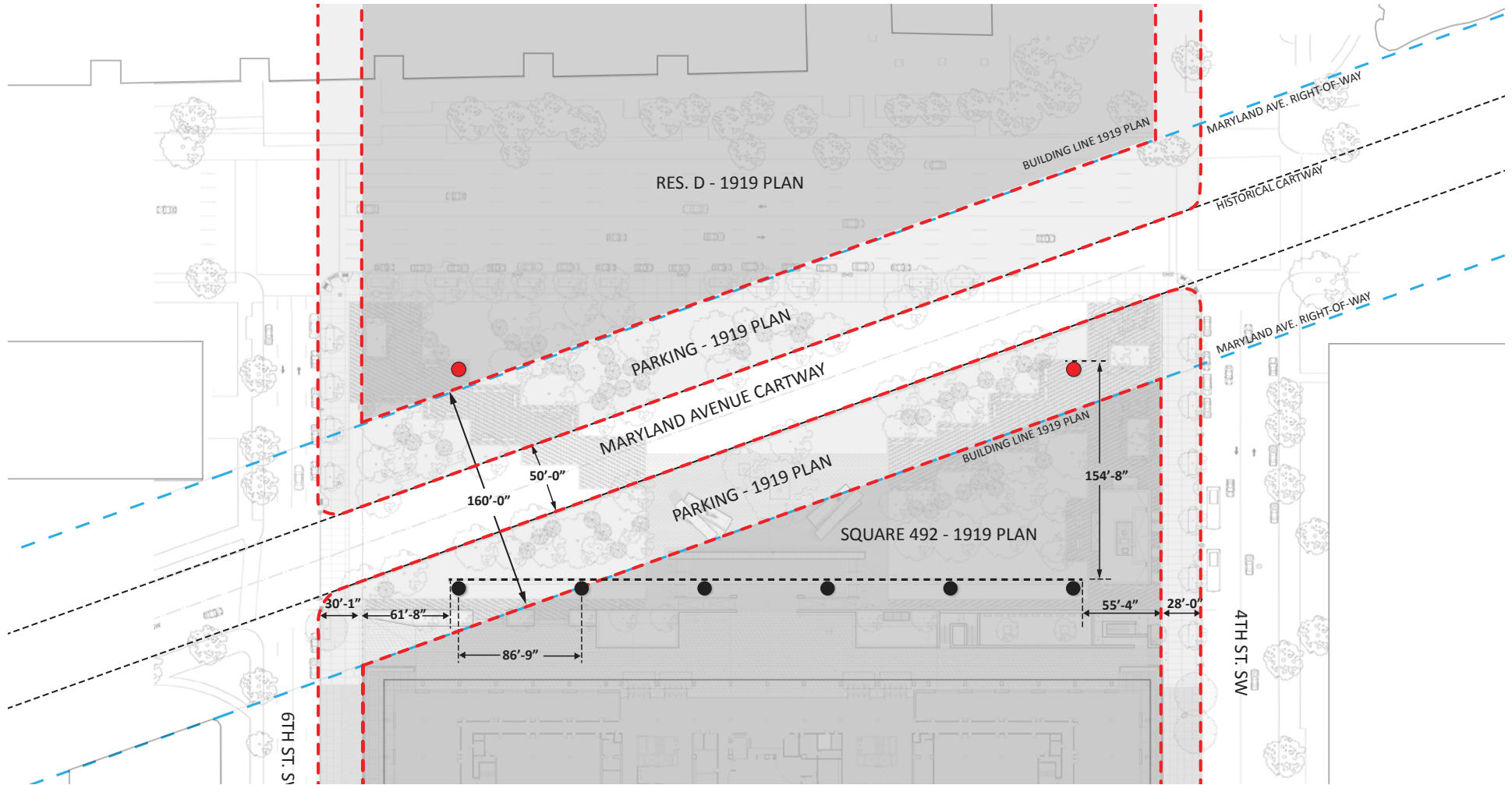
- The design revisions eliminate the East and West tapestries, allowing the influence of the adjacent historic buildings (Wilbur Wright and Wilbur Cohen Buildings) to define and unify the site with the precinct.
- The northern singular columns are located fully within the planes of the adjacent building facades of the Independence Avenue designed experience.
- The design revisions widen the Maryland Avenue viewshed or the L'Enfant Plan from 95' to 135' wide creating a proportionally *horizontal* framed view towards the Capitol building.
- Original concept included four columns that were within the 160' ROW. The revised plan includes only two columns and one partial column within the southern edge of 160' ROW.

EISENHOWER MEMORIAL

Gehry Partners • AECOM Joint Venture

STIPULATION 1: MARYLAND AVENUE

NCPC APPROVED PRELIMINARY DESIGN OCTOBER 2014



MEMORIAL DESIGN COMPARED TO DIAGRAM OF 1919 PLAN OF MARYLAND AVENUE CARTWAY

KEY:

- MARYLAND AVENUE RIGHT-OF-WAY
- - 1919 PLAN
- 1919 BLOCKS
- 1919 "PARKING" ZONES OFF CARTWAY
- COLUMN LOCATIONS
- REVISED COLUMN LOCATIONS

STIPULATION 1: MARYLAND AVENUE
NCPC APPROVED PRELIMINARY DESIGN OCTOBER 2014



MARYLAND AVENUE VIEWSHED TOWARDS CAPITOL

MOA STIPULATION 1: MARYLAND AVENUE CARTWAY

EISENHOWER MEMORIAL

Gehry Partners • AECOM Joint Venture

STIPULATION 1: MARYLAND AVENUE

DECEMBER 2011 DESIGN



VIEW ALONG MARYLAND AVENUE TOWARDS CAPITOL

NCPC APPROVED PRELIMINARY DESIGN OCTOBER 2014



VIEW ALONG MARYLAND AVENUE TOWARDS CAPITOL - The design revisions widen the Maryland Avenue viewshed from 95' to 135' wide, creating a proportionally *horizontal* frame to the Capitol building.

MOA STIPULATION 1: MARYLAND AVENUE CARTWAY

EISENHOWER MEMORIAL

Gehry Partners • AECOM Joint Venture

STIPULATION 1: MARYLAND AVENUE

DECEMBER 2011 TAPESTRY DESIGN



VIEW FROM MEMORIAL CORE TOWARDS 4TH STREET WITH EAST TAPESTRY

NCPC APPROVED PRELIMINARY DESIGN OCTOBER 2014



VIEW FROM MEMORIAL CORE TOWARDS 4TH STREET. THE ADJACENT WILBUR COHEN BUILDING DEFINES THE EAST EDGE OF THE SITE.

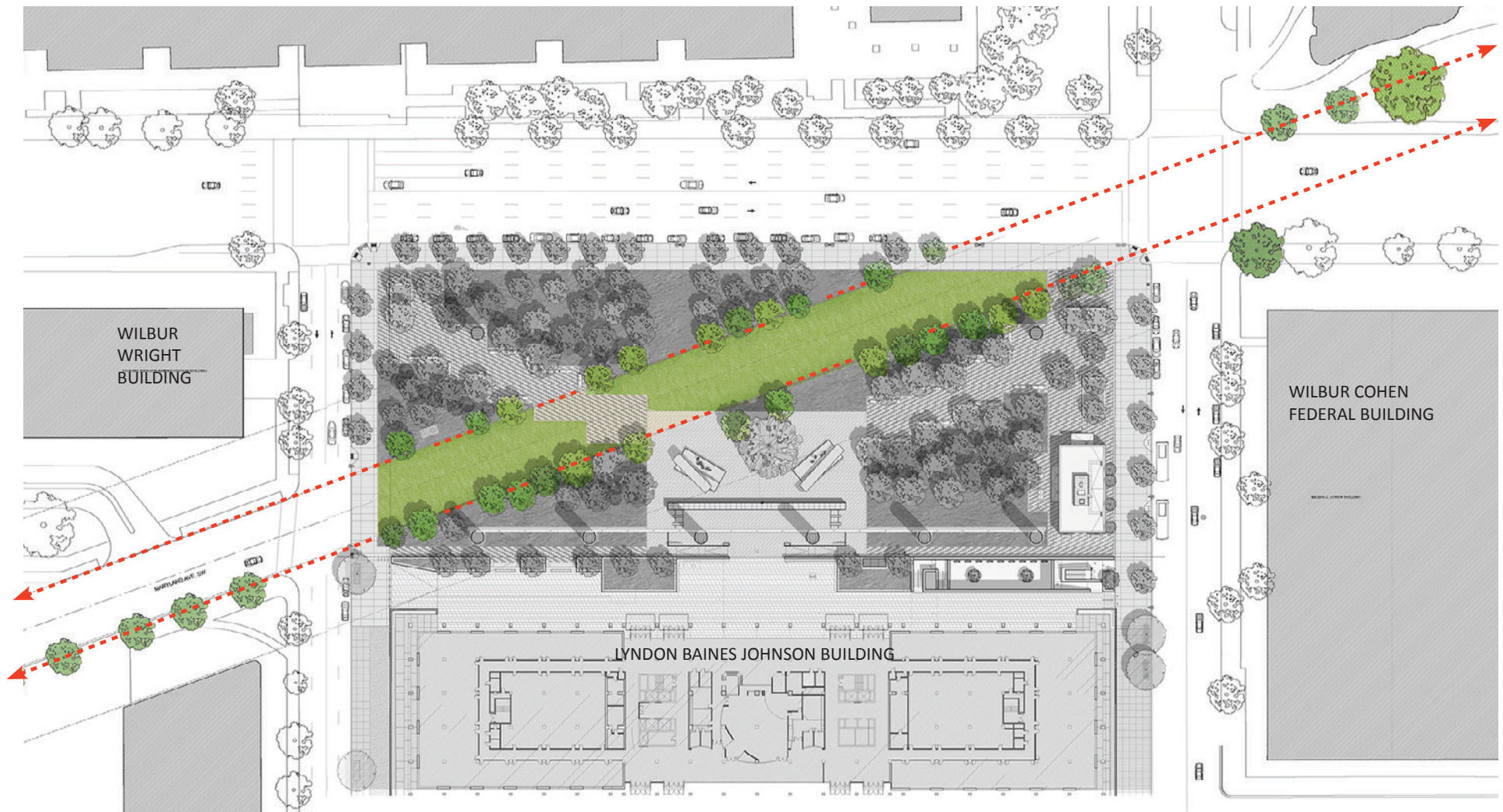
MOA STIPULATION 1: MARYLAND AVENUE CARTWAY

EISENHOWER MEMORIAL

Gehry Partners • AECOM Joint Venture

STIPULATION 1: MARYLAND AVENUE

NCPC APPROVED PRELIMINARY DESIGN OCTOBER 2014



ALIGNMENT OF TREES ALONG MARYLAND AVENUE

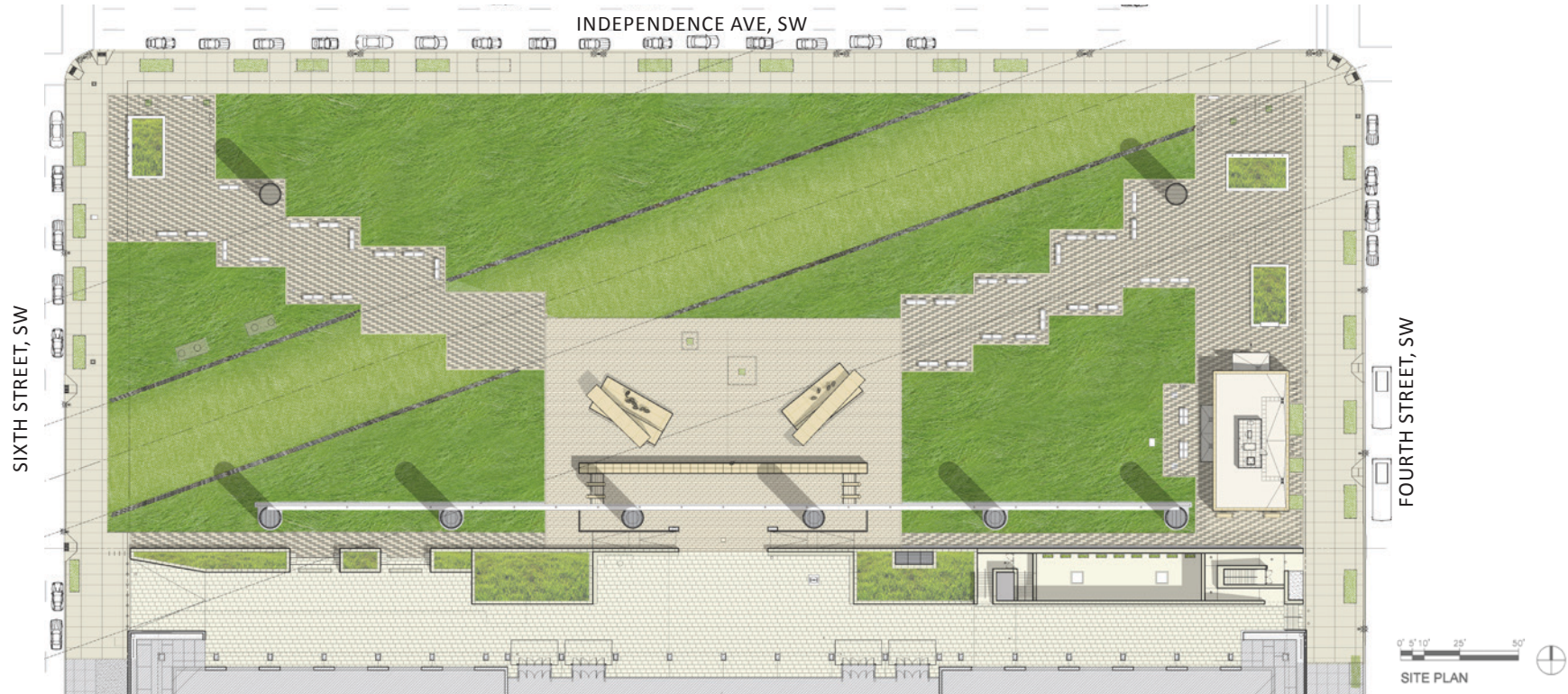
MOA STIPULATION 1: MARYLAND AVENUE CARTWAY

EISENHOWER MEMORIAL

Gehry Partners • AECOM Joint Venture

STIPULATION 1: MARYLAND AVENUE

NCPC APPROVED PRELIMINARY DESIGN OCTOBER 2014



GROUNDPLANE PLANTING

KEY:



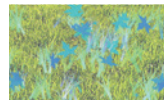
TURF TYPE 1



TURF TYPE 2



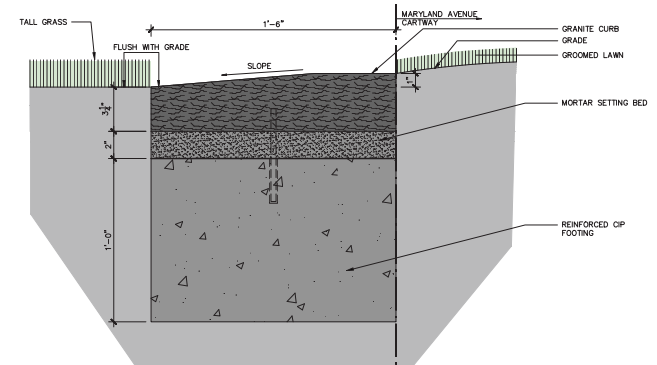
MEMORIAL
PLANTERS



PROMENADE
PLANTERS



GRANITE CURB



GRANITE CURB REVISED DETAIL

The granite curb defines the cartway edge but does not invite walking.

MOA STIPULATION 1: MARYLAND AVENUE CARTWAY

EISENHOWER MEMORIAL

Gehry Partners • AECOM Joint Venture

STIPULATION 2

PLANT MATERIALS

Update: The planting plan has been further developed and more trees have been added to the 2012 site plan.

Comments:

Are any tree or shrub species from the original LBJ Building Plaza palette being used in the memorial design?

Response: There are several species of trees from the original palette that are being included in the memorial design. The canopy trees include red oak and willow oak, and the understory trees include American hornbeam (Ironwood).

STIPULATION 2: PLANT MATERIALS

EXISTING LBJ PLAZA PLAN



TREE SPECIES USED IN ORIGINAL LBJ PLAZA DESIGN PLANT PALETTE:

- Red Oak | *Quercus rubra*
- Willow Oak | *Quercus phellos*
- Ironwood | *Carpinus caroliniana*
- Southern Magnolia | *Magnolia graniflora*
- Crepe Myrtles | *Lagerstroemia*
- Honeylocust | *Gleditsia triacanthos inermis*
- Magnolia Saucer | *Magnolia sauloungana*
- Littleleaf Linden | *Tilia cordata*
- Holly Species | *Ilex*
- Angiojap Yew | *Taxus media*

TREE SPECIES FROM ORIGINAL LBJ PLAZA DESIGN PLANT PALETTE INCORPORATED INTO CURRENT LANDSCAPE DESIGN:



Red Oak
Quercus rubra



Willow Oak
Quercus phello



Ironwood
Carpinus caroliniana

EISENHOWER MEMORIAL

Gehry Partners • AECOM Joint Venture

STIPULATIONS 3 & 10C

NIGHT LIGHTING

STIPULATION 3

Update: The conceptual lighting plan for the memorial retains the south tapestry of the 2012 design. The intent is to respect the hierarchy of lighting in the Nation's Capital and provide subtle, ground-level lighting within the site.

Comments:

- How will the tapestry be lit?
- If the tapestry includes trees with leaves and the sky includes clouds, would there be more material on the tapestry to reflect light?
- How will the office lights from the LBJ Building affect lighting of the tapestry?
- The tapestry being lit on only one side relegates the side facing the LBJ Building to a secondary status level.
- Will the columns be lit?

Response: The tapestry will be lit from below with subdued lighting along its bottom edge. Lighting of the tapestry is minimized to not compete with the illuminated Capitol Dome (see pages 18 and 19). The tapestry is a previously identified and evaluated adverse effect that is not being intensified. Given the tapestry image considered in the 2012 MOA included trees with full leaves, the inclusion of limited spring-time emergent leaves and isolated clouds would not affect the density or reflectivity of the tapestry and would not affect the previously considered lighting level (see page 20).

The LBJ building will not be lit internally at night as a result of the GSA/Department of Education energy conservation program. Light from the north face of the tapestry will leak onto the south face and be sufficient to enhance the image. The primary nighttime vantage point will be from the park and not from the Promenade as the Department of Education will be closed in the evenings resulting in reduced pedestrian traffic levels from that direction (see page 17).

The columns will be seen through ambient light levels; they will not be specifically lit. Overall, the lighting plan continues to **minimize** and does not intensify a previously identified or known determination of effect.

STIPULATION 10c

Update: The conceptual lighting plan for the memorial has been developed. The requirement of the design is to respect the hierarchy of lighting in the Nation's Capital and provide subtle, ground-level lighting within the site with particular deference given to the US Capitol, as envisioned by the original site/design parameters. The lighting plan will be reviewed by CFA as is consistent with the review process followed by other memorials.

Comments:

- How will the tapestry and columns be lit?
- Does the night lighting result in an intensification of effects?

Response: The tapestry will be lit from below with subdued lighting along its bottom edge. Given the tapestry image considered in the 2012 MOA included trees with full leaves, the inclusion of limited spring-time emergent leaves and isolated clouds would not affect the density or reflectivity of the tapestry and would not affect the previously considered lighting level. The columns will be seen through ambient light levels; they will not be specifically lit. Overall, the lighting plan does not represent an intensification of effect; it continues to **minimize** the adverse effect.

STIPULATIONS 3 & 10C: NIGHT LIGHTING



MEMORIAL AS FOCAL POINT OR ICON

The avenues of Washington D.C. masterplan terminate at focal points, which often exhibit the city's memorials. These nodes create a critical identity for the city, as the avenues create view corridors directly to the Memorial elements on a series of axes. During the day the memorials are highlighted by their placement within these nodes. However their hierarchy in relationship to their surroundings is actually even more accentuated at night where the lighting amplifies their presence. As the memorials become termini for the views around the city, the lighting of the memorials evokes the very nature of the masterplan's structure. They become the glowing icons of the nation's capital.



AVENUES AS VOLUMES OF LIGHT

Perhaps as critical to the perception of the memorials as the sculptures and buildings themselves, are the avenues that bind the city together. An avenue in this context affords the view of the icons that dot the urban plan, creating an axially intense foreground through which the Memorial can be viewed from a distance. During the day, these avenues create a spatial axis of view toward the memorials, often flanked by trees or adjacent buildings.

During the night these avenues become consistent corridors of illumination where the 'volume' of the street is filled with light. In counter balance with the icons, the avenue has a presence that is defined by its binding surfaces, the street surfaces and the adjacent facades. The termini of the avenues are defined by icons, whereas the avenues that bind them are defined by volume.

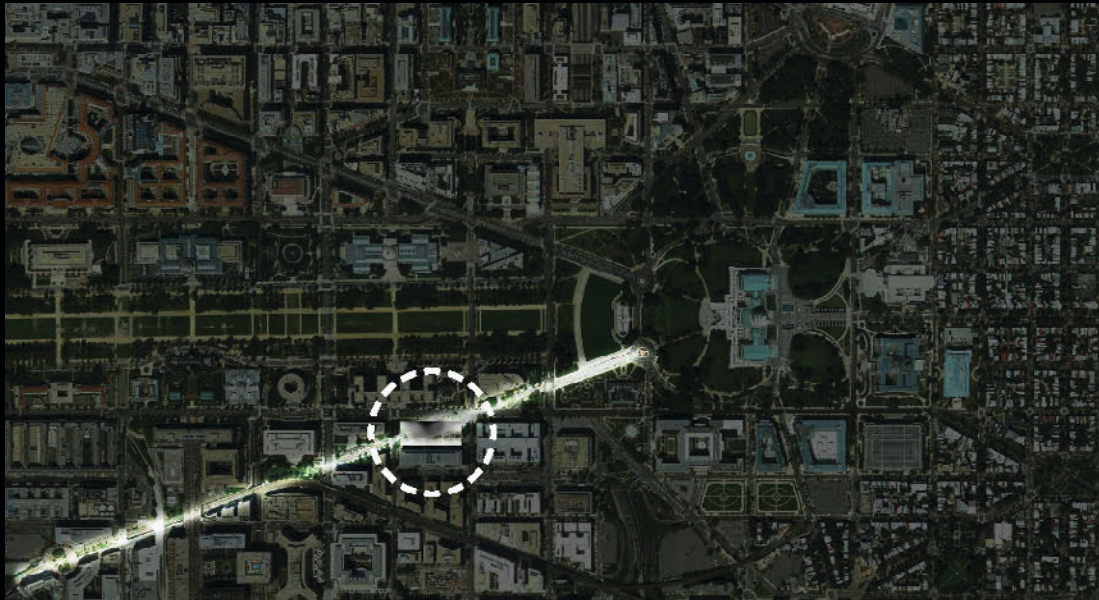


MOA STIPULATION 3: NIGHT LIGHTING

EISENHOWER MEMORIAL

Gehry Partners • AECOM Joint Venture

STIPULATIONS 3 & 10C: NIGHT LIGHTING

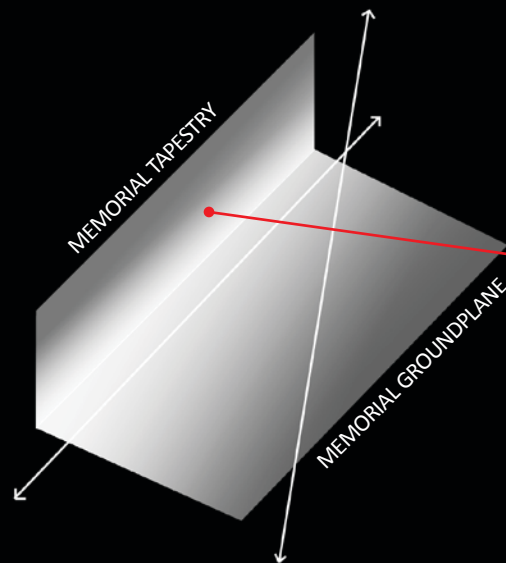


THE SITE AND ITS AVENUE AS AN URBAN ROOM

The site for the Eisenhower Memorial is a part of the network of avenues that bind the D.C. landscape. As a part of this network of avenues, the lighting concept responds to the Eisenhower Memorial as a volume of light. Just as the other avenues of the city are bound spatially by the roadway surface and the surrounding buildings, the Eisenhower Memorial uses the tapestry elements, Memorial blocks, and horizontal landscape plane as its binding lighting elements.

The lighting enhances the context that is embraced by the surfaces of the Memorial elements as opposed to lighting the pieces of the Memorial as individual objects or icons. This approach is more in keeping with the contextual relationship of the Eisenhower Memorial to its urban surroundings.

The lighting within the site is made up of continuous uplighting for the Memorial elements, and a more accented, organically distributed downlighting for the rest of the Memorial site. This creates a horizontal and vertical layering of light through the site, creating a place that is at once a Memorial, an avenue, and a landscape.



THE MEMORIAL USES THE TAPESTRY, MEMORIAL ELEMENTS, AND THE HORIZONTAL LANDSCAPE PLANE AS ITS BINDING LIGHTING ELEMENTS.



TAPESTRY MOCK-UP
ILLUMINATED AT NIGHT

MOA STIPULATION 3: NIGHT LIGHTING

EISENHOWER MEMORIAL

Gehry Partners • AECOM Joint Venture

STIPULATIONS 3 & 10C: NIGHT LIGHTING



FRONT SIDE OF MOCKUP 1B - FRONT LIT



FRONT SIDE OF MOCKUP 1 - FRONT LIT

TAPESTRY SAMPLE 1 AND 2: FULL SCALE LIGHTING MOCK-UPS AT SITE AT 7PM WITH LBJ BUILDING INTERIOR LIGHTING STILL ON. LBJ INTERIOR LIGHTING ON UPPER FLOORS IS TYPICALLY TURNED OFF BETWEEN 8-9 PM.

STIPULATIONS 3 & 10C: NIGHT LIGHTING
NCPC APPROVED PRELIMINARY DESIGN OCTOBER 2014



VIEW OF MEMORIAL AT NIGHT

MOA STIPULATION 3: NIGHT LIGHTING

EISENHOWER MEMORIAL

Gehry Partners • AECOM Joint Venture

STIPULATIONS 3 & 10C: NIGHT LIGHTING
NCPC APPROVED PRELIMINARY DESIGN OCTOBER 2014



MARYLAND AVENUE AT NIGHT

MOA STIPULATION 3: NIGHT LIGHTING

EISENHOWER MEMORIAL

Gehry Partners • AECOM Joint Venture

STIPULATIONS 3 & 10C: NIGHT LIGHTING
NCPC APPROVED PRELIMINARY DESIGN OCTOBER 2014



NIGHT VIEW OF MARYLAND AVENUE VIEWSHED TOWARDS CAPITOL

MOA STIPULATION 3: NIGHT LIGHTING

EISENHOWER MEMORIAL

Gehry Partners • AECOM Joint Venture

STIPULATION 10c



TAPESTRY IMAGE DESIGN PER MOA FROM NCPC SUBMISSION DATED 12/30/2011



TAPESTRY IMAGE DESIGN - NCPC APPROVED PRELIMINARY DESIGN OCTOBER 2014

IN RESPONSE TO SECTION 106 CONSULTATION, THE TAPESTRY ART HAS NOT INCREASED IN DENSITY DUE TO TREES WITH LEAVES SINCE THE TAPESTRY ART FROM THE 2012 MOA DESIGN.

STIPULATION 10a

CENTRAL CORE ELEMENTS

Update: The central core now incorporates sculptural figures as part of the primary Memorial Elements. The Memorial Elements have gotten larger and have been shifted slightly toward the south. The artwork has been refined to include free-standing sculpture as the primary focus in front of the *bas reliefs*.

Comments:

- Have the modifications to the central core elements changed the determination of effect?

Response: The design refinements to the central core artwork are subtle details that provide definition but **do not intensify a previously considered effect**.

STIPULATION 10a: CENTRAL CORE ELEMENTS

SUMMARY OF DESIGN RESPONSES FROM DECEMBER 2011 TO NCPC APPROVED PRELIMINARY DESIGN OCTOBER 2014

NCPC DESIGN RESPONSES:

1. The east and west tapestries have been removed and replaced with a single columns.
2. Two northern columns are fully within planes of the adjacent building facades.
3. The revised design widens the Maryland Avenue viewshed from 95'-2" to 135'-5".
4. LBJ Perimeter security has been revised to reduce the need for bollards.

CENTRAL CORE ELEMENTS:

1. Memorial core elements have been reconfigured in plan to be more open to the approach paths.
2. Massing of Memorial core elements has been revised and a lintel has been added.
3. The Memorial elements were revised to include free-standing bronze statues in front of bas reliefs.
4. The inscription on the Memorial overlook wall has been revised to: Dwight D. Eisenhower
5. Inscriptions of the selected speeches were relocated to the rear facade of the memorial elements.

LANDSCAPE:

1. Street trees have increased and species revised to comply with D.C. tree planting plan.
2. Tree selections incorporate 3 species that were part of the original LBJ plaza plant palette.
3. Proposed bus turnout on 4th street has been removed per DDOT.
4. Diagonal walkways have been reconfigured to incorporate smaller gathering spaces.
5. Additional trees have been added to the site plan.

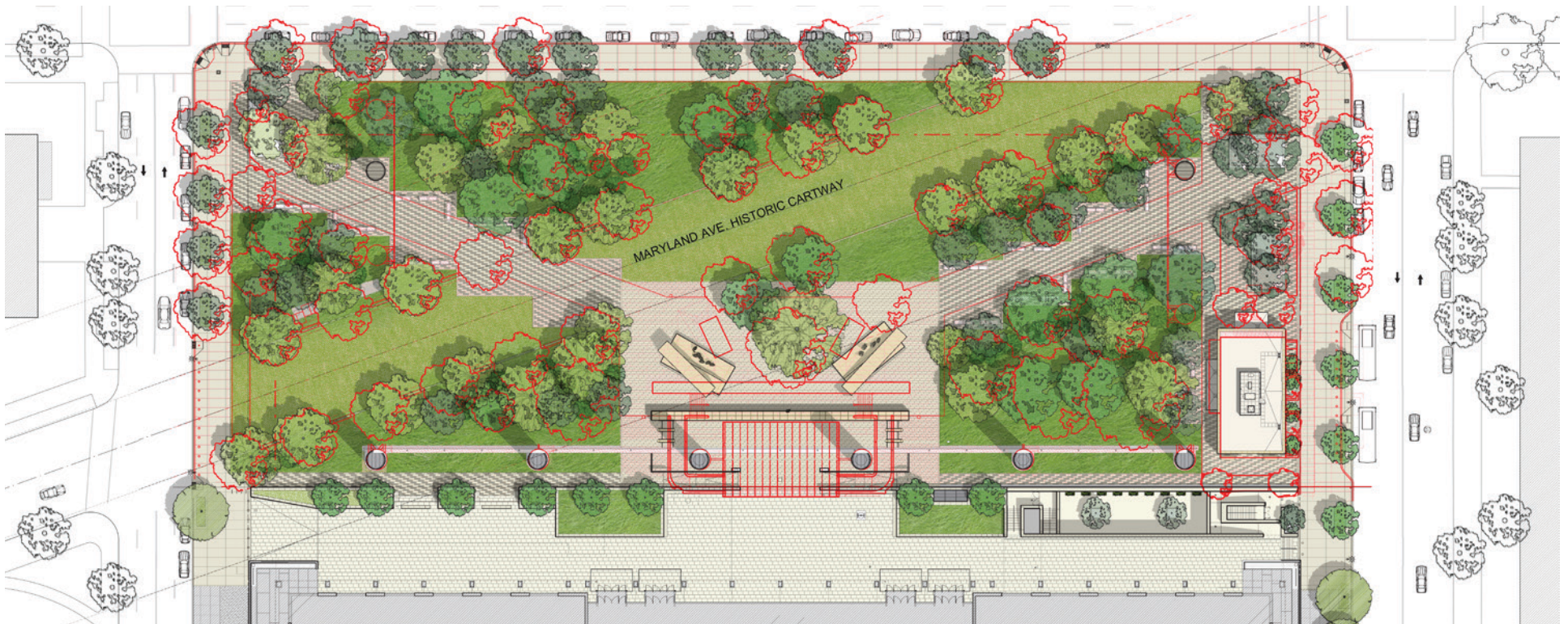
LIGHTING: A night lighting design has been incorporated into the overall design

SUPPORT BUILDING:

1. The separate storage building has been removed.
2. Visitor seating areas have been increased.
3. An entrance vestibule has been added to the North facade.

LBJ PROMENADE:

1. The Memorial Overlook canopy has been removed.
2. The Overlook stair and ramp approach to the LBJ building have been revised.
3. Planter sizes have increased.
4. The central gathering area has been reshaped and includes bench seating.
5. Terraced seating on the west end has been reconfigured.



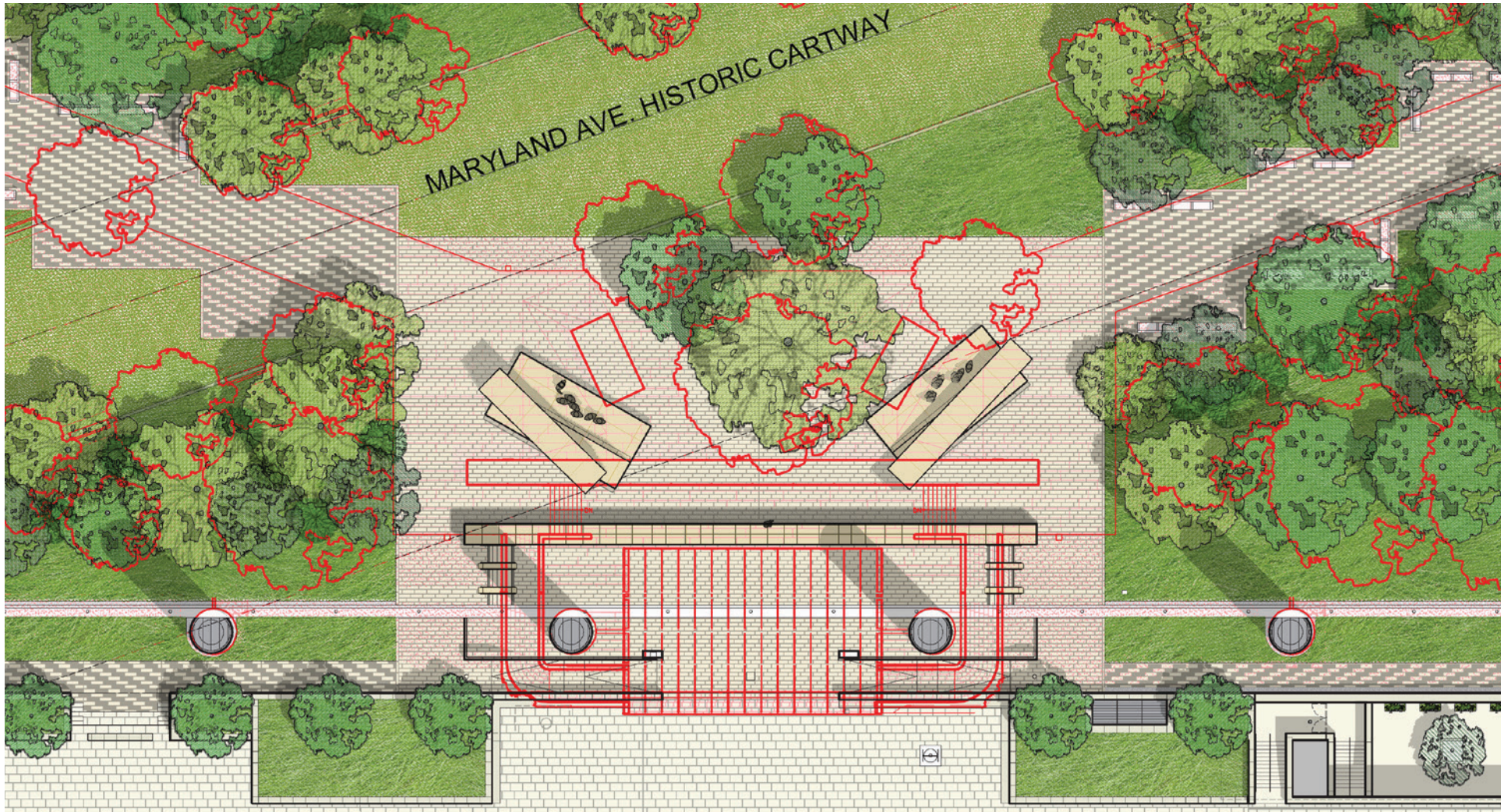
NCPC PRELIMINARY APPROVAL PLAN (SHOWN IN COLOR) OVER DECEMBER 2011 PLAN (SHOWN IN RED)

EISENHOWER MEMORIAL

Gehry Partners • AECOM Joint Venture

STIPULATION 10a: CENTRAL CORE ELEMENTS

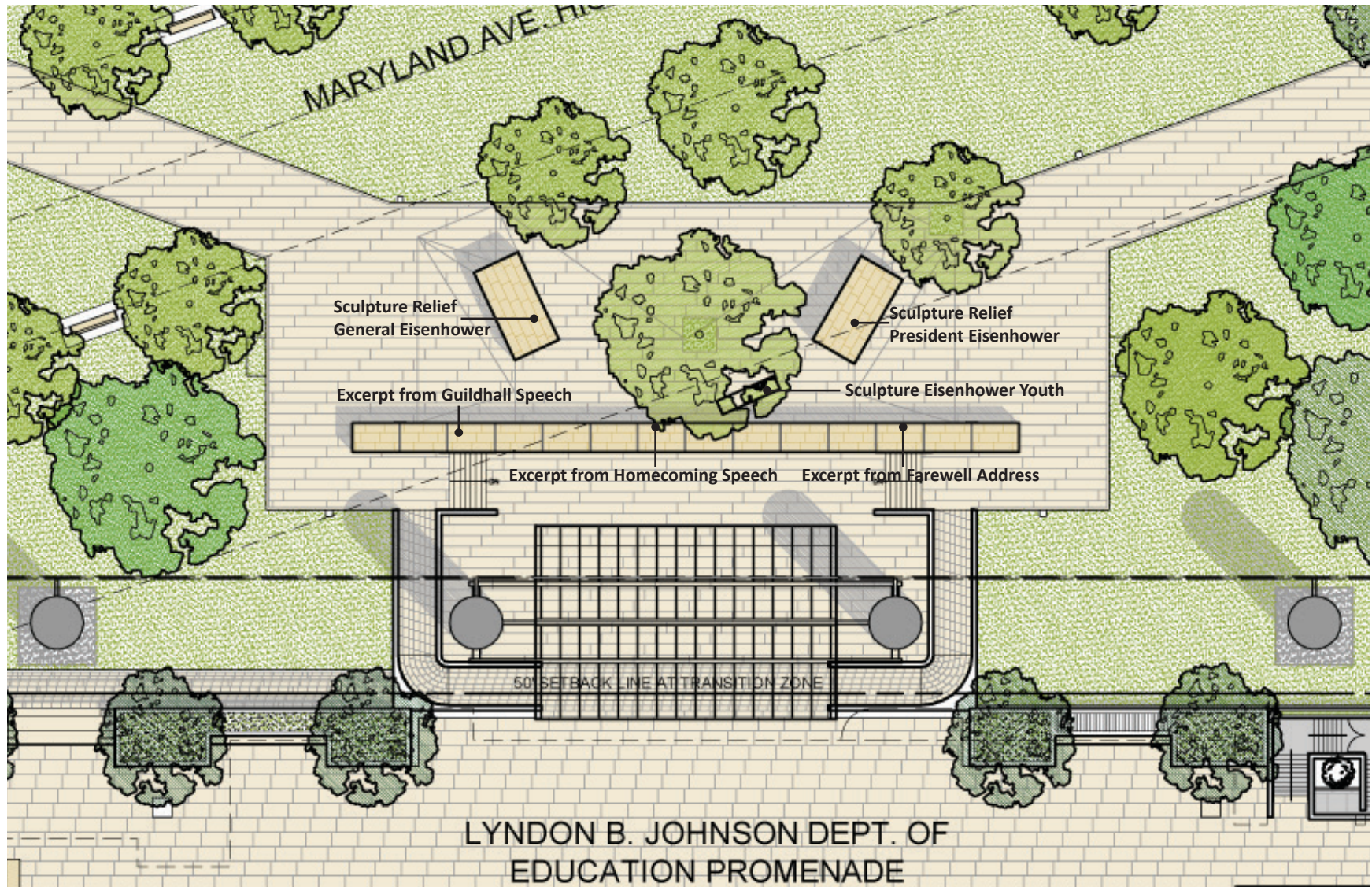
MEMORIAL CORE OVERLAY



MEMORIAL CORE PLAN OVERLAY:
NCPC PRELIMINARY APPROVAL PLAN (SHOWN IN COLOR) OVER DECEMBER 2011 PLAN (SHOWN IN RED)

STIPULATION 10a: CENTRAL CORE ELEMENTS

DECEMBER 2011 DESIGN



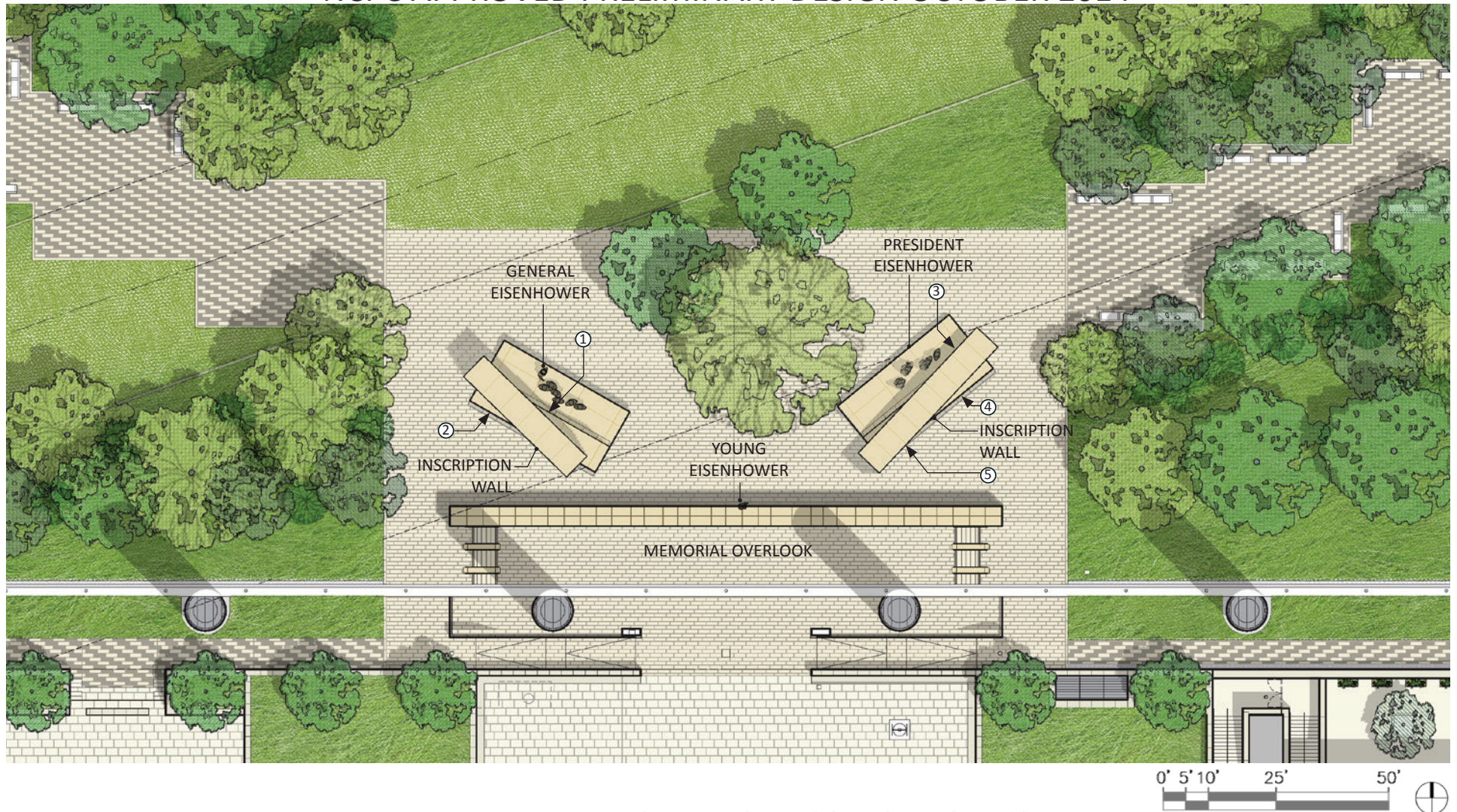
MOA STIPULATION 10: CENTRAL CORE ELEMENTS

EISENHOWER MEMORIAL

Gehry Partners • AECOM Joint Venture

STIPULATION 10a: CENTRAL CORE ELEMENTS

NCPC APPROVED PRELIMINARY DESIGN OCTOBER 2014



MEMORIAL CORE PLAN

- ① General Eisenhower Lintel Inscription: D-Day Address To Troops
- ② General Eisenhower Inscription Wall: Guildhall Address
- ③ President Eisenhower Lintel Inscription: Second Inaugural Address
- ④ President Eisenhower Inscription Wall: Farewell Address
- ⑤ President Eisenhower Inscription Wall: First Inaugural Address

SUMMARY OF REVISIONS TO MEMORIAL CORE

- 1. Memorial core elements have been reconfigured to be more open to the approach paths.
- 2. Massing of Memorial core elements has been revised and a lintel has been added.
- 3. The Memorial elements have been revised to include free-standing bronze statues in front of bas reliefs.
- 4. The inscription on the Memorial Overlook wall has been replaced with the text: Dwight D. Eisenhower
- 5. Inscriptions of the selected speeches were relocated to the rear facade of the memorial elements from the Overlook wall.
- 6. Young Eisenhower sculpture is seated on the Overlook wall.

STIPULATION 10b

LANDSCAPE TREATMENT

Update: The landscape plan has been refined. Significantly more shade and decorative trees have been added in the vernacular landscape of Kansas to increase the density of the groves, provide additional shade, more clearly define the open views, and create intimacy along the pathways.

Comments:

- With the additional trees, has the memorial's overall level of adverse effect decreased?
- Should the trees around the perimeter of the site be consistent or adhere to guidelines for street trees?
- Has the number of trees along Maryland Avenue changed?

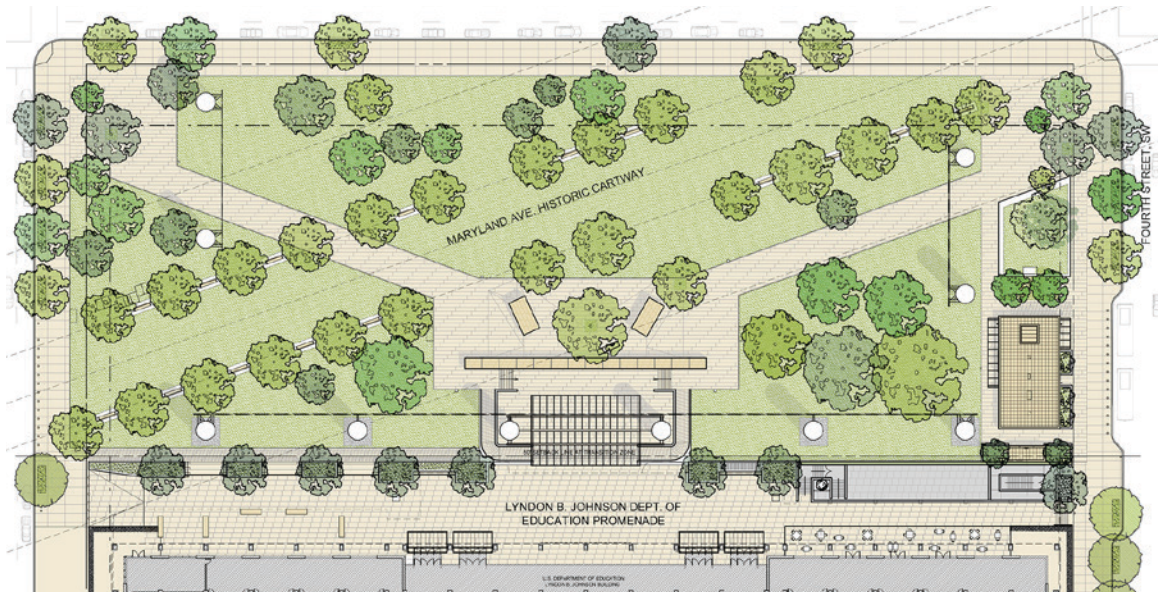
Response: The enhancements to the landscape plan, including planting more shade and decorative trees, will make the site feel more like a park, which is consistent with the design principles. As a result, the level of effect certainly will not increase.

The District of Columbia, which has jurisdiction over roadway spaces in Washington, maintains strict requirements for the species and configuration of street trees along 4th Street, 6th Street, and Independence Avenue. The Memorial landscape plan complies with the applicable street tree regulations for those corridors.

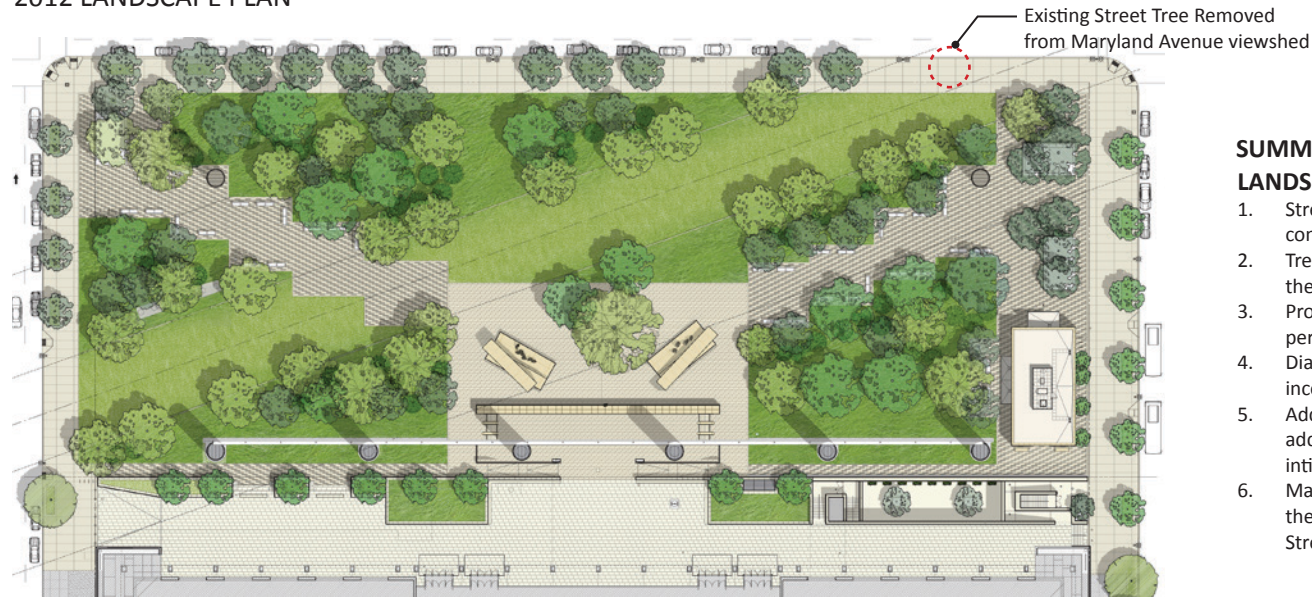
The number of trees along Maryland Avenue has been slightly revised; a limited number of trees have been removed or reconfigured to accommodate the modified entry paths and afford more direct views of the Memorial from the perimeter of the site through the more densely planted park. The refinements allow for easier physical and visual access into the site and continue to **minimize** the level of effect.

STIPULATION 10b: LANDSCAPE TREATMENT

SHADE CANOPY TREES COMPARISON



2012 LANDSCAPE PLAN



APPROVED PRELIMINARY DESIGN OCTOBER 2014 LANDSCAPE PLAN

SUMMARY OF DESIGN RESPONSES

LANDSCAPE:

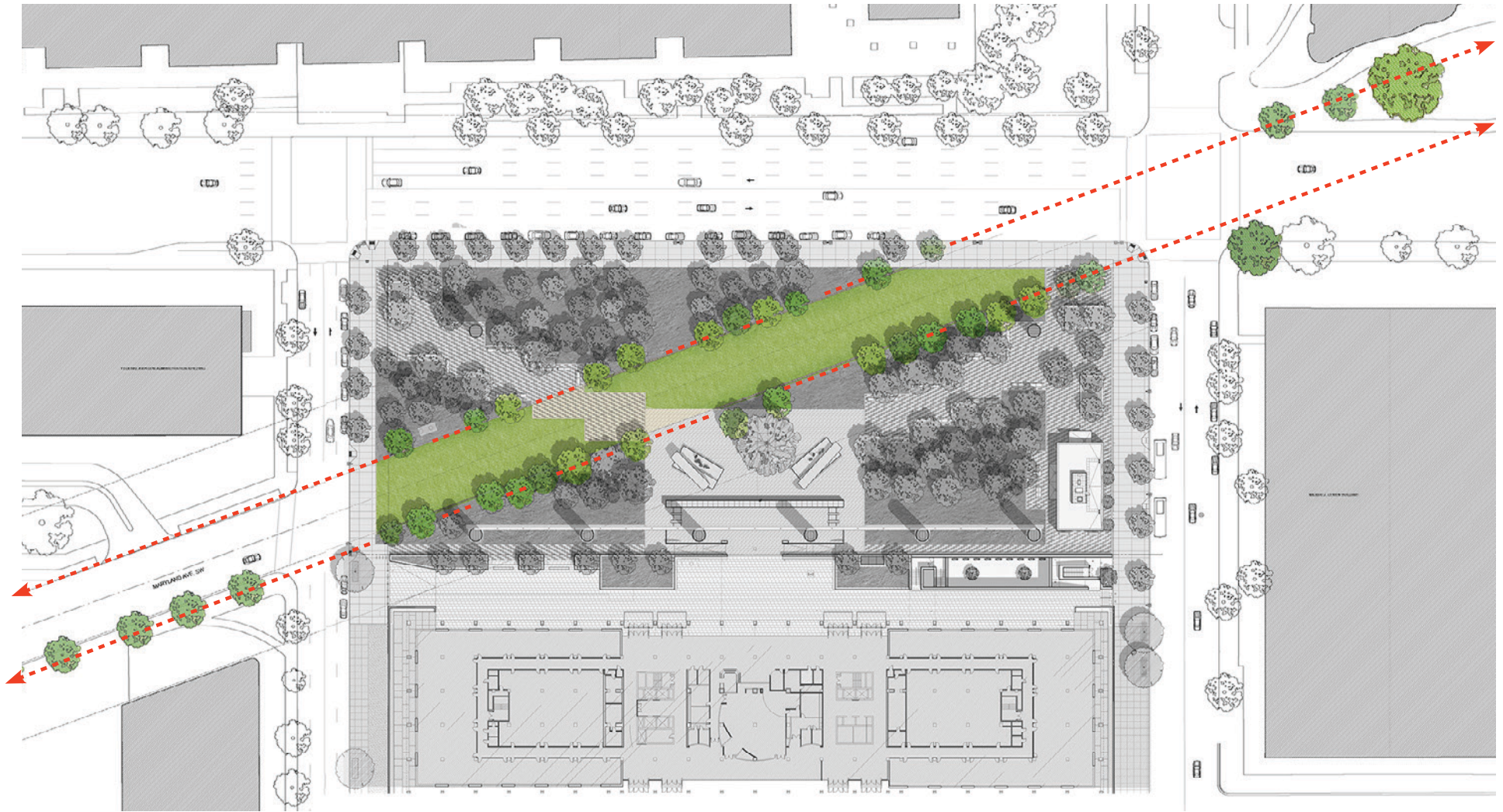
1. Street trees have increased and species revised to comply with D.C. tree planting plan.
2. Tree selections incorporate 3 species that were part of the original LBJ plaza plant palette.
3. Proposed bus turnout on 4th street has been removed per DDOT.
4. Diagonal walkways have been reconfigured to incorporate smaller gathering spaces.
5. Additional canopy and understory trees have been added to the site plan, to focus views and create more intimacy along the pathway to the memorial core.
6. Maryland Avenue hierarchy is maintained by opening the viewshed with the removal of one street tree at 4th Street and Independence Avenue.

MOA STIPULATION 10: FURTHER LANDSCAPE DEVELOPMENTS

EISENHOWER MEMORIAL

Gehry Partners • AECOM Joint Venture

STIPULATION 10b: LANDSCAPE TREATMENT
NCPC APPROVED PRELIMINARY DESIGN OCTOBER 2014



ALIGNMENT OF TREES ALONG MARYLAND AVENUE

MOA STIPULATION 1: MARYLAND AVENUE CARTWAY

EISENHOWER MEMORIAL

Gehry Partners • AECOM Joint Venture

STIPULATION 10d

SUPPORT BUILDING ARCHITECTURE

Update: The design of the support building has been refined to be cleaner and simpler. In addition, the separate storage shed has been removed.

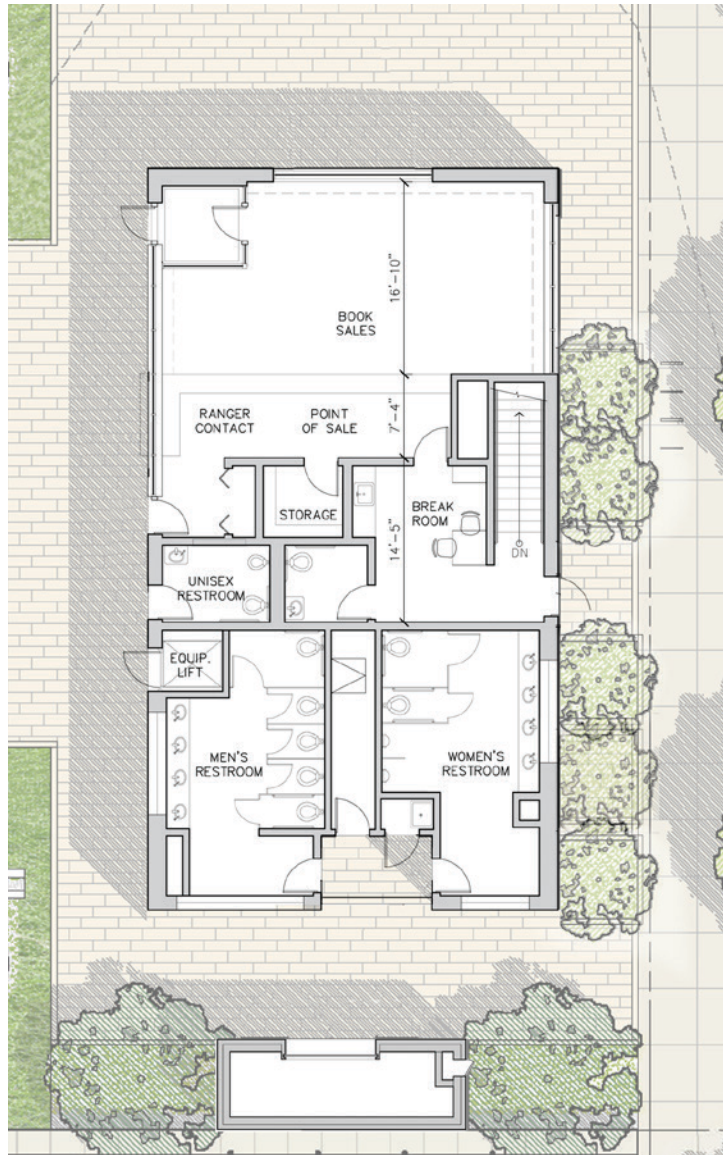
Comments:

- With the removal of the shed, will the level of effect be intensified or minimized?

Response: The design advancements of the support building reduce the footprint of structures on the site and **minimize** its level of effect.

STIPULATION 10d: SUPPORT BUILDING ARCHITECTURE

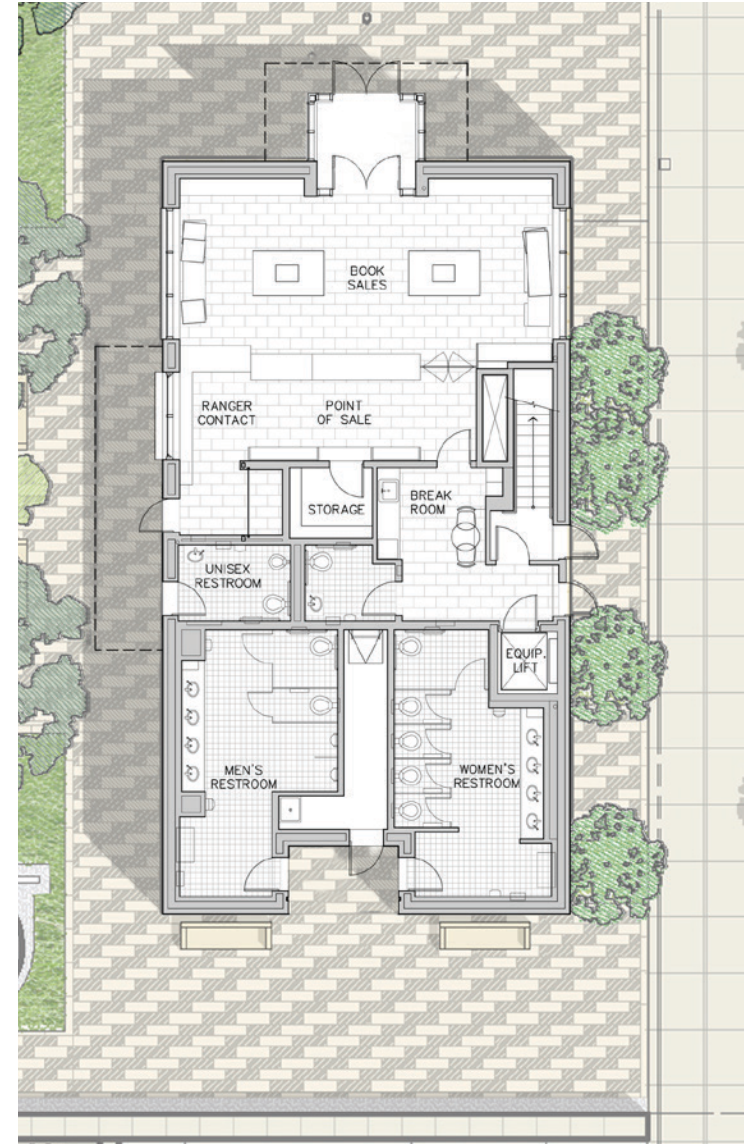
DECEMBER 2011 DESIGN



INFORMATION CENTER FLOOR PLAN



NCPC APPROVED PRELIMINARY DESIGN OCTOBER 2014



SUMMARY OF REVISIONS TO SUPPORT BUILDING

- Separate Storage Building has been removed
- Entry Vestibule was relocated
- The equipment lift was relocated to the east side of the building.



STIPULATION 10d: SUPPORT BUILDING ARCHITECTURE
NCPC APPROVED PRELIMINARY DESIGN OCTOBER 2014



MODEL PHOTOGRAPH - WEST ELEVATION

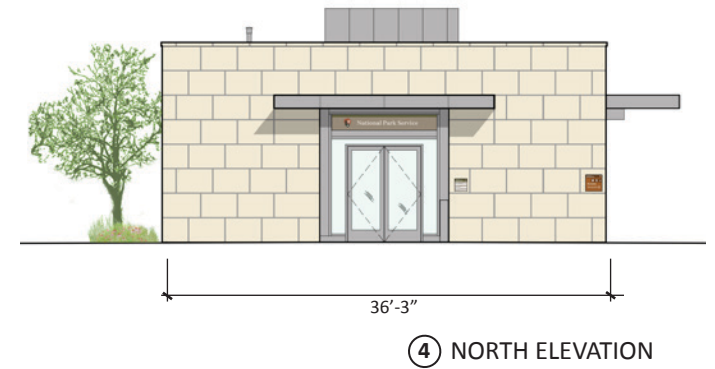
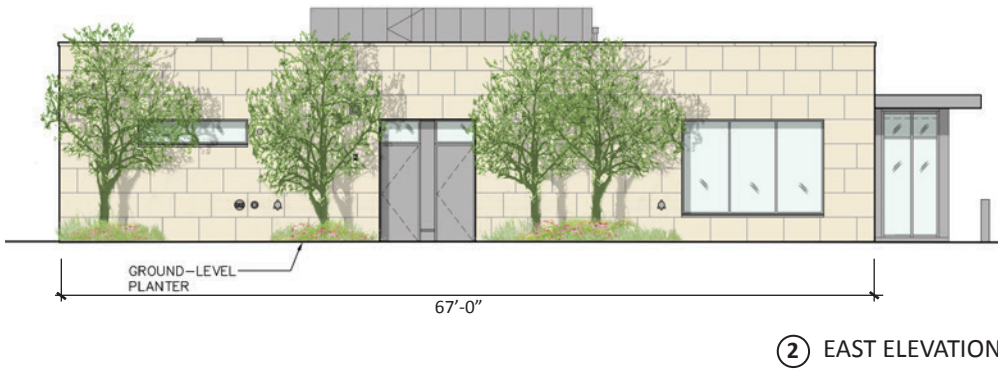
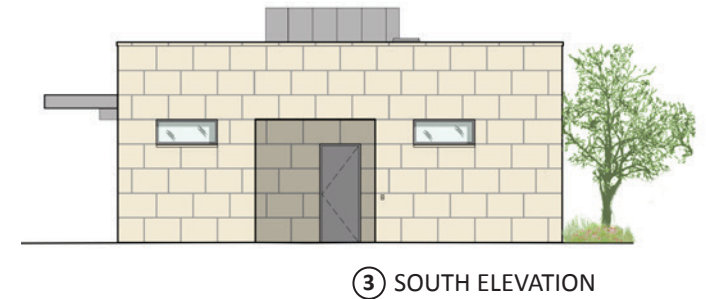
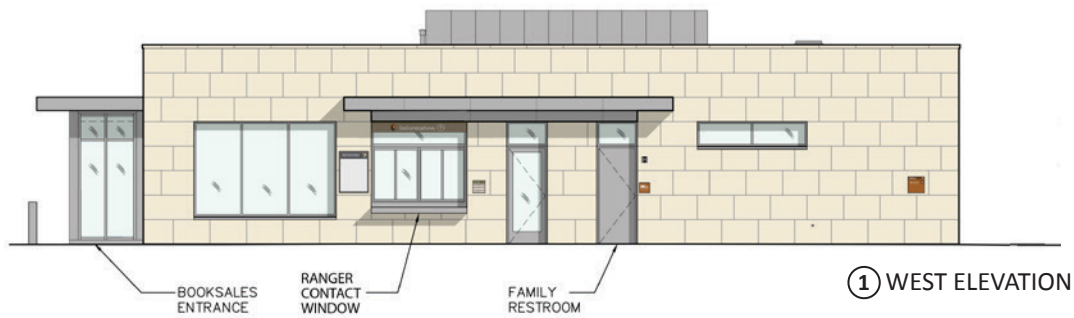
MOA STIPULATION 10: SUPPORT BUILDING FOR RANGER CONTACT STATION AND INTERPRETIVE SALES

EISENHOWER MEMORIAL

Gehry Partners • AECOM Joint Venture

STIPULATION 10d: SUPPORT BUILDING ARCHITECTURE

NCPC APPROVED PRELIMINARY DESIGN OCTOBER 2014



MOA STIPULATION 10: SUPPORT BUILDING FOR RANGER CONTACT STATION AND INTERPRETIVE SALES

STIPULATION 10e

LBJ BUILDING PROMENADE

Update: The design of the LBJ Building Promenade no longer includes a canopy.

Comments:

- Will the lighting of the LBJ promenade at night conflict with the tapestry's lighting?

Response: The overlook will draw many visitors to the Promenade and the front door of the Department of Education, even without the canopy. In addition, the number of security bollards providing the required security for the LBJ Building has been much reduced, thus making pedestrian movements easier.

The spaces created along the Promenade will have utilities and built-in audio visual hookups to facilitate setups for activities and events. The Promenade will be lit along the ground for pedestrian safety and will not affect the lighting levels in the Memorial site or on the tapestry. The LBJ building will not be lit internally at night as a result of the GSA/ Department of Education energy conservation program.

STIPULATION 10e LBJ BUILDING PROMENADE

LETTER OF SUPPORT FROM THE DEPARTMENT OF EDUCATION:



THE SECRETARY OF EDUCATION
WASHINGTON, DC 20202
October 12, 2011

Mr. Rocco C. Siciliano
Chairman
Dwight D. Eisenhower Memorial Commission
1629 K Street, NW, Suite 801
Washington, DC 20006

Dear Mr. Siciliano:

Thank you for providing senior members of my staff the opportunity to review the detailed model for the proposed Dwight D. Eisenhower Memorial at National Capital Planning Commission's offices last week. Based on that meeting and recent conversations with the Memorial Commission, the Department of Education is pleased with the current design, and we are grateful for the adjustments that have been made in response to our concerns.

Our initial concerns focused on the Memorial's tapestry feature and the way it might restrict the amount of light entering our building and obstruct the views from our offices. Now that we have seen the model as well as the mock-ups, we have a better appreciation for the translucent nature of the tapestry and its considerable distance from our building. At the outset, we were also troubled by the potential for the tapestry to hide our building from the public, but with the various design changes, including the shortening of the large tapestry and the relocation of the two smaller ones, as well as what we have learned about the way that the weave will allow light to shine through, our concerns are alleviated.

From the beginning, we have been excited about the great potential for public engagement that the Memorial will bring to the Department of Education, and we remain so. The prospect of hundreds of thousands of new visitors at our doorstep offers a unique opportunity for teaching and learning about education and the Department's programs. We have been encouraged by our mutual discussions about possible enhancements to the transition zone, with the potential for new space and facilities for exhibits, meetings, events, and even retail.

We look forward to working with the Memorial Commission and the General Services Administration on ways to use the new space to enhance opportunities for public engagement as well as for work life improvements for the Department's staff. We have already shared some ideas of our own, and we are eager for the conversation to continue.

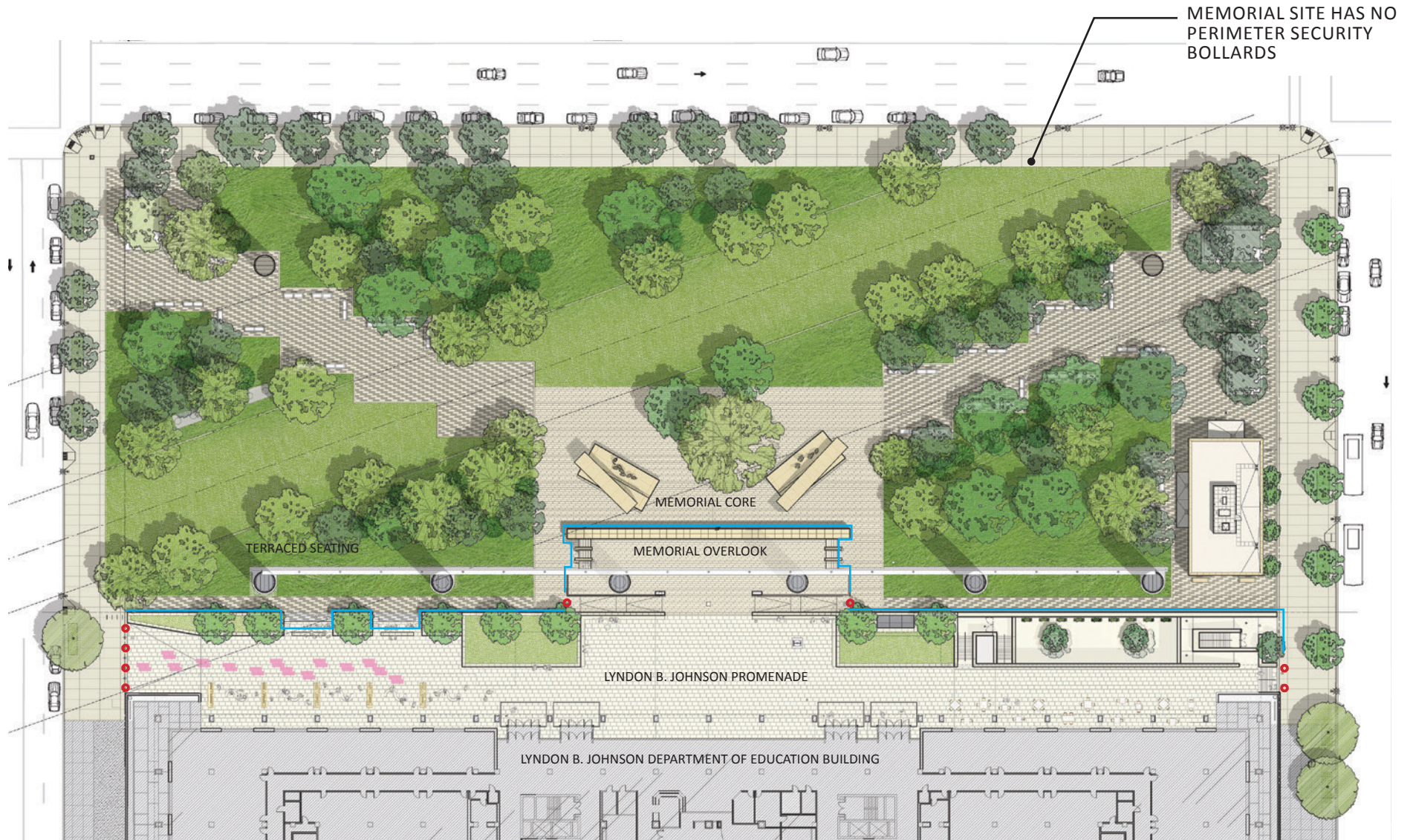
Thank you again for your attentiveness to our concerns during the design process. We look forward to working with you on this important project, and we are supportive of the Memorial design as it now stands.

Sincerely,

A handwritten signature in black ink, appearing to read "Arne Duncan".

Arne Duncan

STIPULATION 10e LBJ BUILDING PROMENADE NCPC APPROVED PRELIMINARY DESIGN OCTOBER 2014



MEMORIAL SITE SECURITY AND
PERIMETER SECURITY FOR LYNDON B. JOHNSON BUILDING

LYNDON B. JOHNSON BUILDING SECURITY PERIMETER KEY:
 • AREAS PROTECTED BY BOLLARDS
 — AREAS PROTECTED BY PLANTER WALLS

MOA STIPULATION 10e: LYNDON B. JOHNSON PROMENADE AND SITE TREATMENT

STIPULATION 10e LBJ BUILDING PROMENADE
NCPC APPROVED PRELIMINARY DESIGN OCTOBER 2014



VIEW OF WESTERN SECTION OF LBJ PROMENADE (LOOKING SOUTHEAST)

MOA STIPULATION 10e: LYNDON B. JOHNSON PROMENADE

EISENHOWER MEMORIAL

Gehry Partners • AECOM Joint Venture

STIPULATION 10e LBJ BUILDING PROMENADE
NCPC APPROVED PRELIMINARY DESIGN OCTOBER 2014



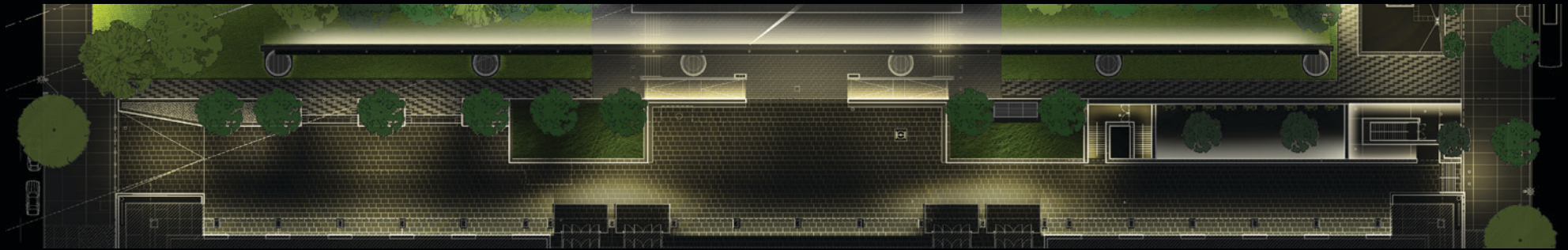
VIEW OF LBJ PROMENADE (LOOKING NORTHWEST)

MOA STIPULATION 10e: LYNDON B. JOHNSON PROMENADE

EISENHOWER MEMORIAL

Gehry Partners • AECOM Joint Venture

STIPULATIONS 10e: NIGHT LIGHTING
NCPC APPROVED PRELIMINARY DESIGN OCTOBER 2014⁴



LIGHTING PLAN RENDERING OF PROMENADE AT NIGHT

STIPULATION 10f

RESPONSE TO NCPC

Update: The National Capital Planning Commission (NCPC) approved the preliminary site and building plans for the Dwight D. Eisenhower Memorial on October 2, 2014. As part of that approval, NCPC made three recommendations relating to design exploration and potentially further revisions.

Comments:

- Strengthen the overall concept of the memorial as a “layered experience” consisting of a memorial core within a park within a surrounding urban landscape.
- Enhance the openness of the Maryland Avenue right-of-way / viewshed.
- Improve the symbolic and physical relationship between the memorial and the Department of Education Building.

Response: The memorial design team will continue to work with NCPC staff to explore and refine the identified issues, as well as revisions relating to pedestrian circulation, perimeter security, lighting, or other issues prior to final review.

ADDITIONAL COMMENTS

Update: During the Section 106 consultation meeting, participants raised issues outside of those identified in the 2012 MOA. In particular, there was a request for further reductions to the south tapestry.

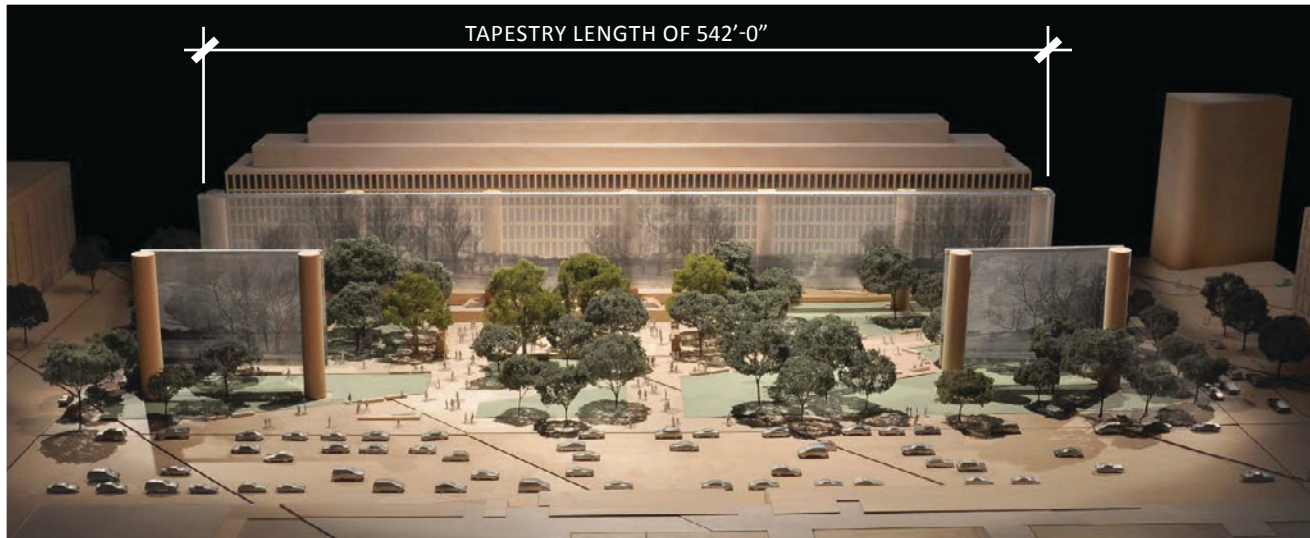
Comments:

- Should the eastern-most and western-most tapestry bays be removed with the columns retained to mark the corners of the site?

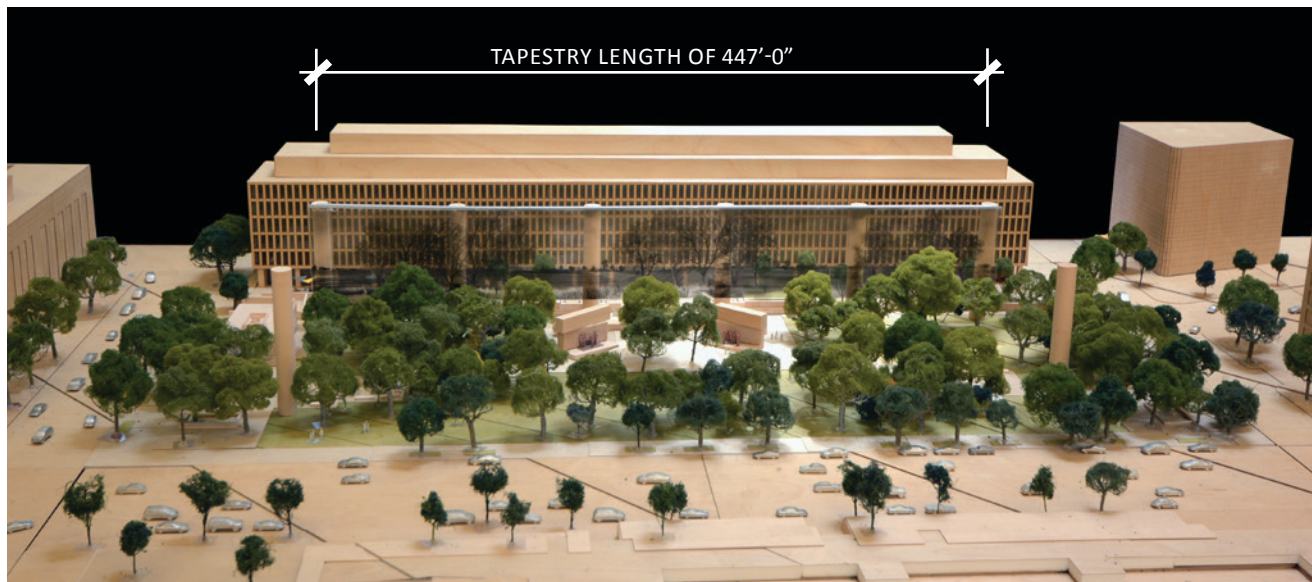
Response: The memorial design team examined and considered a great number of versions of the south tapestry, including multiple iterations with smaller dimensions, removed bays, and reduced heights. After extensive exploration of the issue, the current size of the south tapestry was determined to be the optimal scale and width. Given the expanse of the 4-acre parcel, narrower tapestries along the south edge of the memorial site would appear as individual objects rather than as backdrop elements. Because the length and effect of the south tapestry was included in the 2012 MOA, retention of the currently designed length does not intensify a previously considered effect.

In addition, lighting of the tapestry is minimized from the ground level to remain a background feature relative to the illuminated Department of Education Building façade. As a result, the memorial lighting will not compete with the illumination level of the Capitol Dome, which is the dominant night-time feature.

STIPULATION 10f



NCPC CONCEPT DESIGN REVIEW FEBRUARY 2011



NCPC APPROVED PRELIMINARY DESIGN OCTOBER 2014

IN RESPONSE TO NCPC COMMENTS AND SECTION 106 CONSULTATION, THE TAPESTRY WAS REDUCED IN LENGTH BY 95' AND CENTERED ON THE LYNDON B. JOHNSON BUILDING.