

4545 Empire Court
 Fredericksburg, VA 22408
 Phone: 540-898-9330
 Fax: 540-898-9324

**LAFAYETTE BOULEVARD
 IMPROVEMENTS**

CITY OF FREDERICKSBURG, VIRGINIA

NO.	REVISION	DATE

DESIGNED BY: **LRW/KRH**
 DRAWN BY: **HOSS**
 CHECKED BY: **LRW**
 SCALE: **1" = 80'**
 DATE: **10/8/2014**
 PROFESSIONAL SEAL

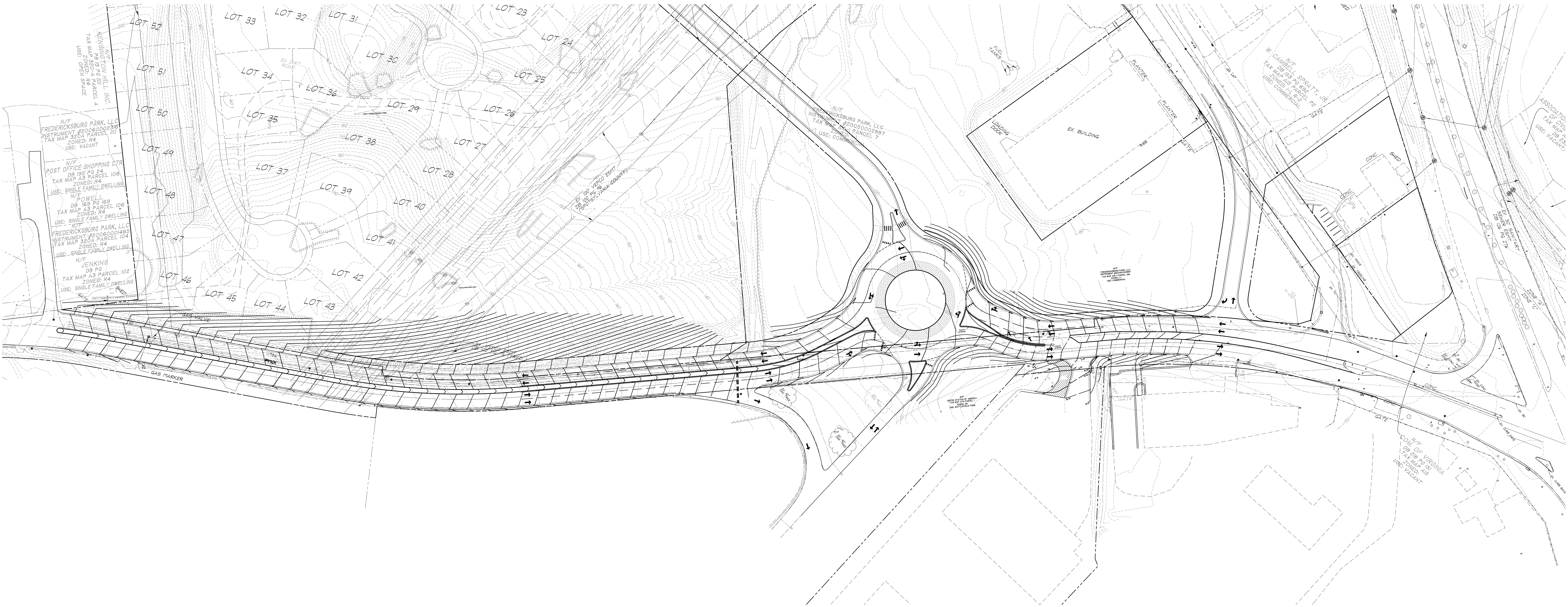
DRAWING TITLE

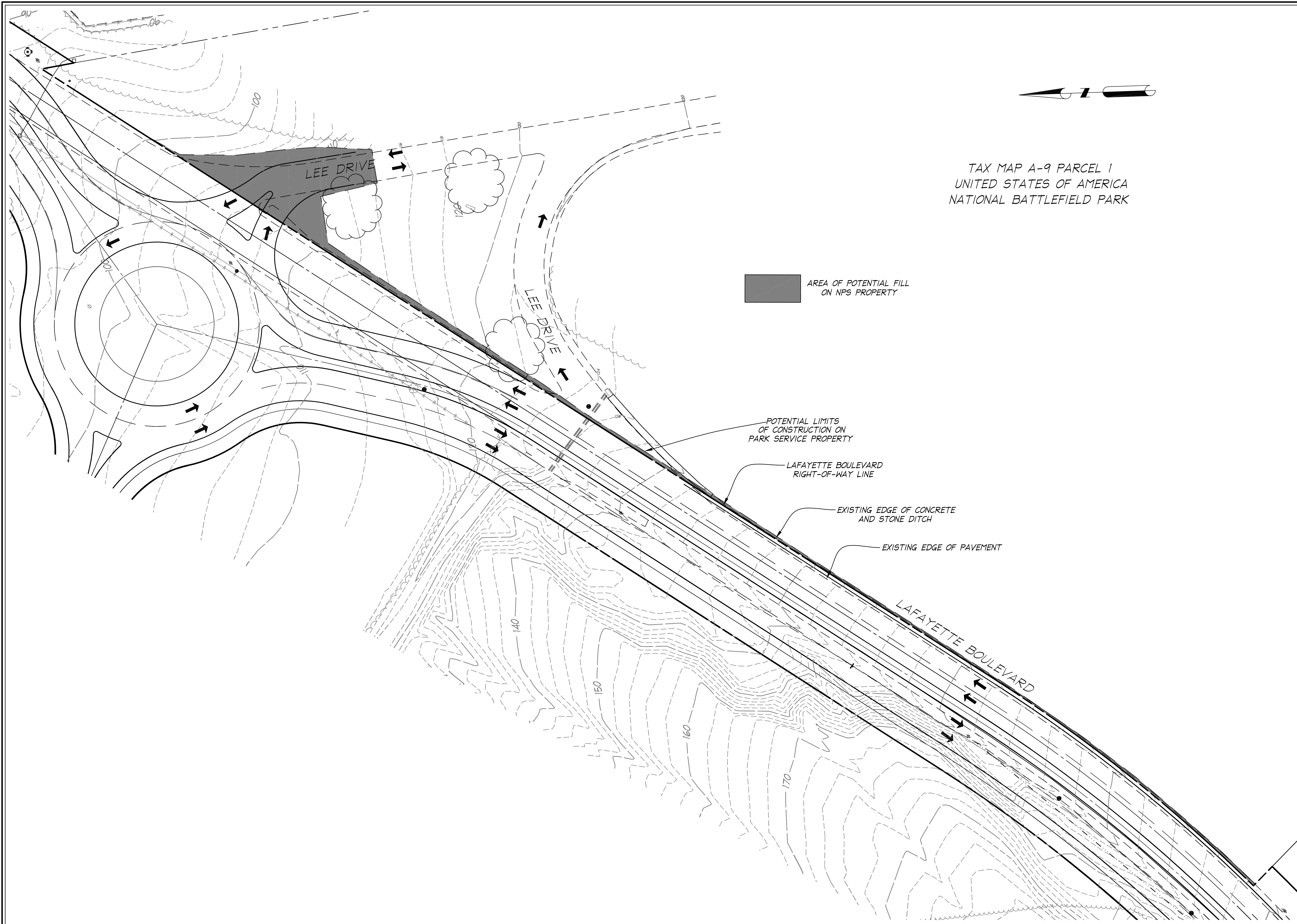
**OVERALL
 PLAN**

C-1
 SHEET 1 OF 1

1317-12 Baseplan.dwg
 WEA Cad File Name

JOB NO.: 1317-12





TAX MAP A-9 PARCEL 1
UNITED STATES OF AMERICA
NATIONAL BATTLEFIELD PARK

AREA OF POTENTIAL FILL
ON NPS PROPERTY

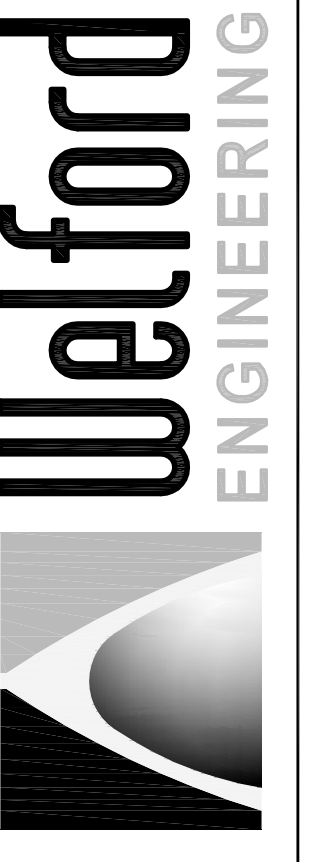
POTENTIAL LIMITS
OF CONSTRUCTION ON
PARK SERVICE PROPERTY

LAFAYETTE BOULEVARD
RIGHT-OF-WAY LINE

EXISTING EDGE OF CONCRETE
AND STONE DITCH

EXISTING EDGE OF PAVEMENT

LAFAYETTE BOULEVARD



4545 Empire Court
Fredericksburg, VA 22408
Phone: 540-898-9330
Fax: 540-898-9324

**SITE CONSTRUCTION PLANS
LAFAYETTE BOULEVARD
IMPROVEMENTS**

CITY OF FREDERICKSBURG, VIRGINIA

NO	REVISION	DATE

DESIGNED BY: **LRW**
DRAWN BY: **HOSS**
CHECKED BY: **LRW**
SCALE: **1"=30'**
DATE: **2/6/2014**

PROFESSIONAL SEAL

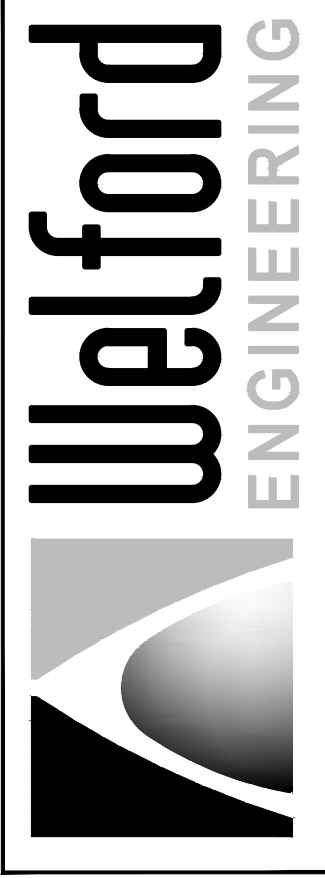
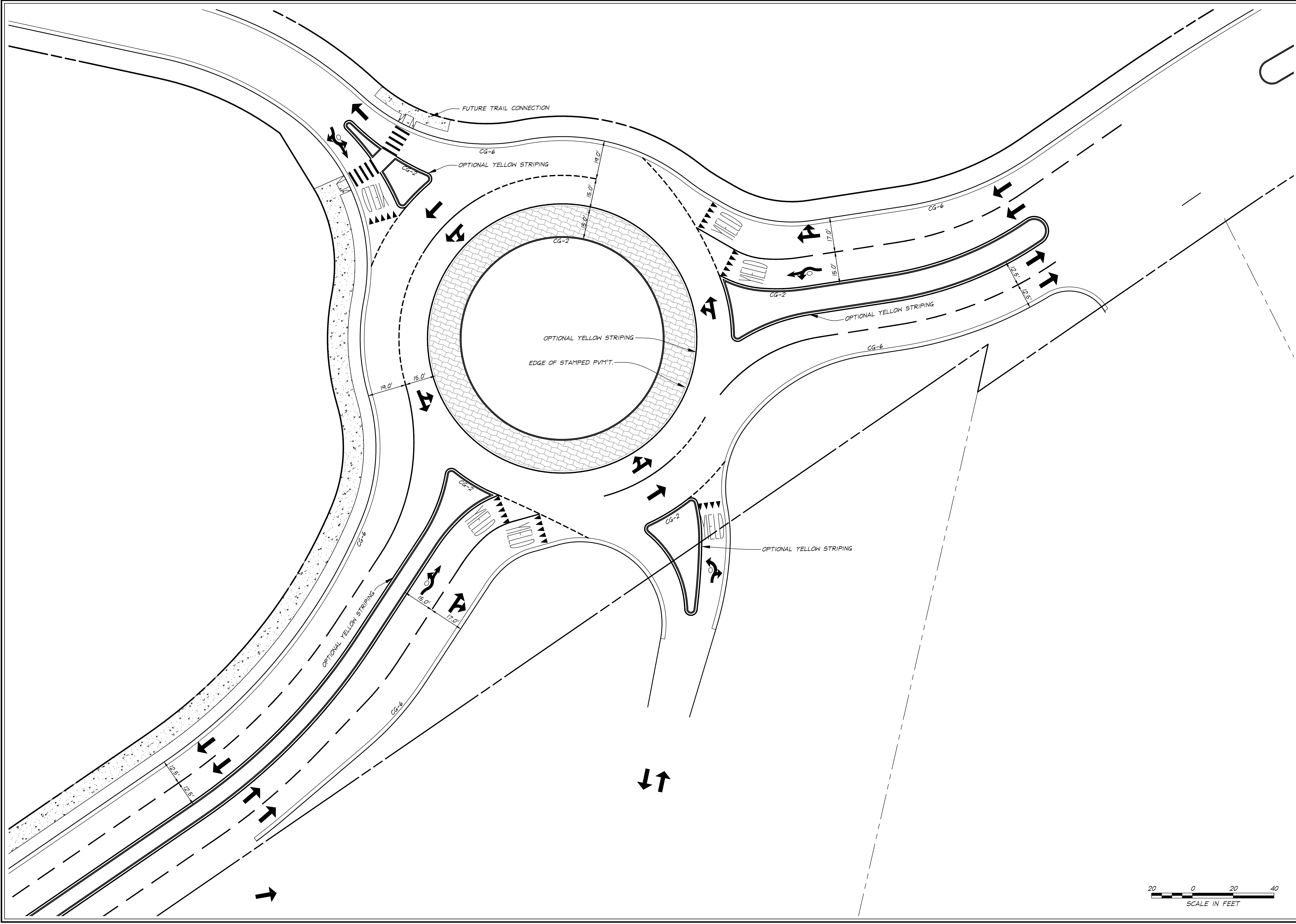
DRAWING TITLE

**PROPOSED
LIMITS OF
WORK ON
NPS PROPERTY**

SHEET 1 OF 1

NPS Limits of work Graphic.dwg
WEA Cad File Name

JOB NO.: 1317-12



4545 Empire Court
Fredericksburg, VA 22408
Phone: 540-898-9330
Fax: 540-898-9324

**LAFAYETTE BOULEVARD
IMPROVEMENTS**

CITY OF FREDERICKSBURG, VIRGINIA

NO.	REVISION	DATE

DESIGNED BY: **LRW/KRH**
DRAWN BY: **HOSS**
CHECKED BY: **LRW**
SCALE: **1"=20'**
DATE: **7/28/2014**
PROFESSIONAL SEAL

DRAWING TITLE
**TELEGRAPH HILL
STRIPING PLAN**

SHEET 1 OF 1
1317-12 Baseplan.dwg
WEA Cad File Name
JOB NO.: 1317-12