



WELCOME

TO THE PUBLIC SCOPING MEETING FOR THE

Georgetown Nonmotorized Boathouse Zone Development Plan



Agenda

6:00 – 6:30 pm Registration + Open House

6:30 – 7:00 pm Presentation

- Project Background
- Purpose & Need
- NEPA Process
- Section 106 Process
- Preliminary Alternatives
- Potential Impact Topics
- Opportunities to Comment

7:00 – 8:00 pm Open House



An aerial photograph of a waterfront park. In the foreground, a large, multi-story building with a light-colored facade and a dark roof is situated on a peninsula. A long, narrow dock extends from the building into the water. Several small boats are moored along the dock. In the background, a bridge spans the water, and a city skyline is visible in the distance. The text "Project Background" is overlaid in large, bold, black letters on the right side of the image.

Project Background

1987 - National Park Service developed the *Plan for the Georgetown Waterfront Park and the Chesapeake and Ohio Canal National Historical Park*.

Mid-1980s to late 1980s - National Park Service and other interested parties released a number of studies focused on the development of the nonmotorized boathouse zone.

2013 - National Park Service prepared the Nonmotorized Boathouse Zone Feasibility Study.

2015 - Preparation of Environmental Assessment and Section 106 of the National Historic Preservation Act compliance for the Georgetown Nonmotorized Boathouse Zone Development Plan.



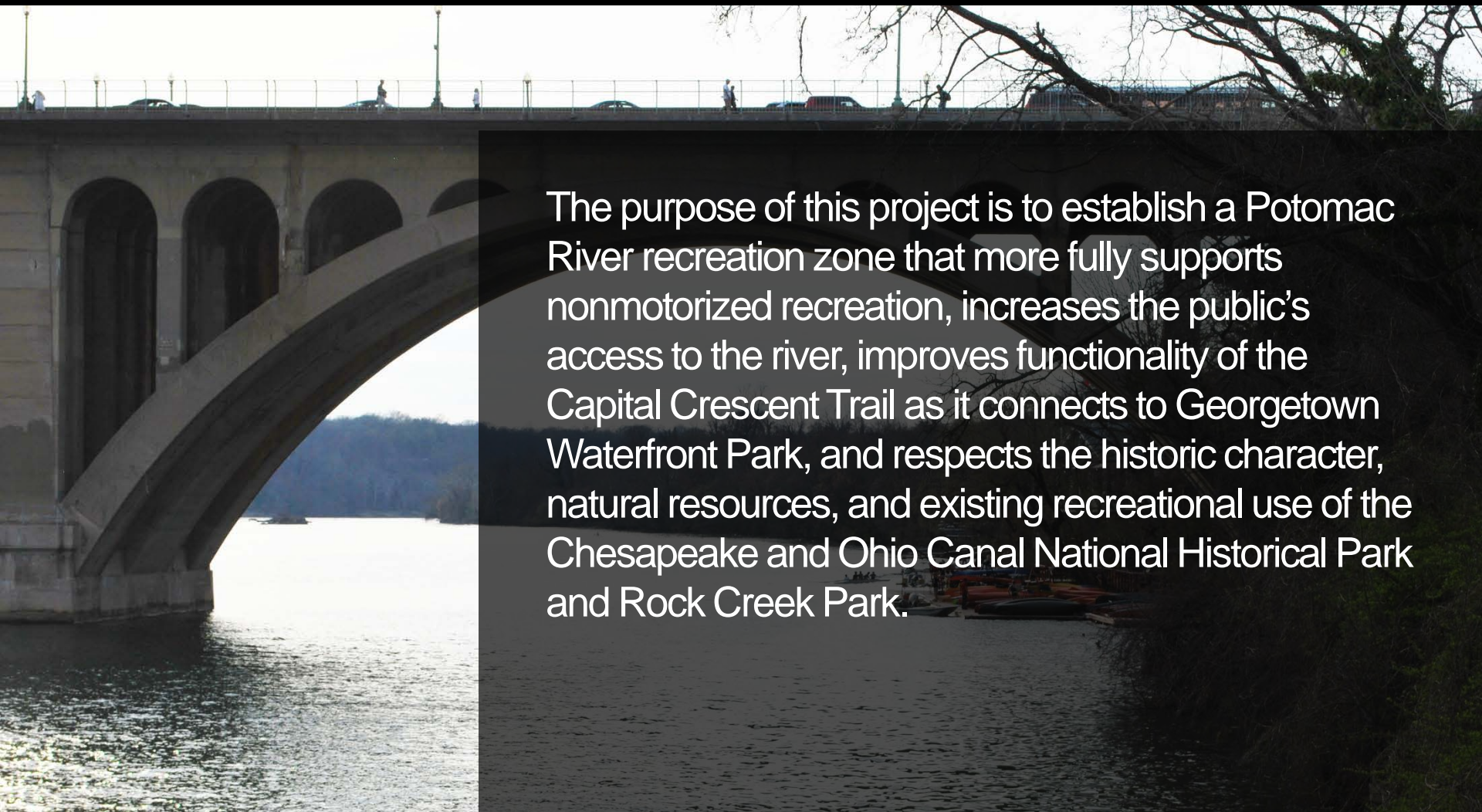
Project Area



U.S. DEPARTMENT OF THE INTERIOR
NATIONAL PARK SERVICE
Chesapeake and Ohio Canal National Historical Park
Rock Creek Park



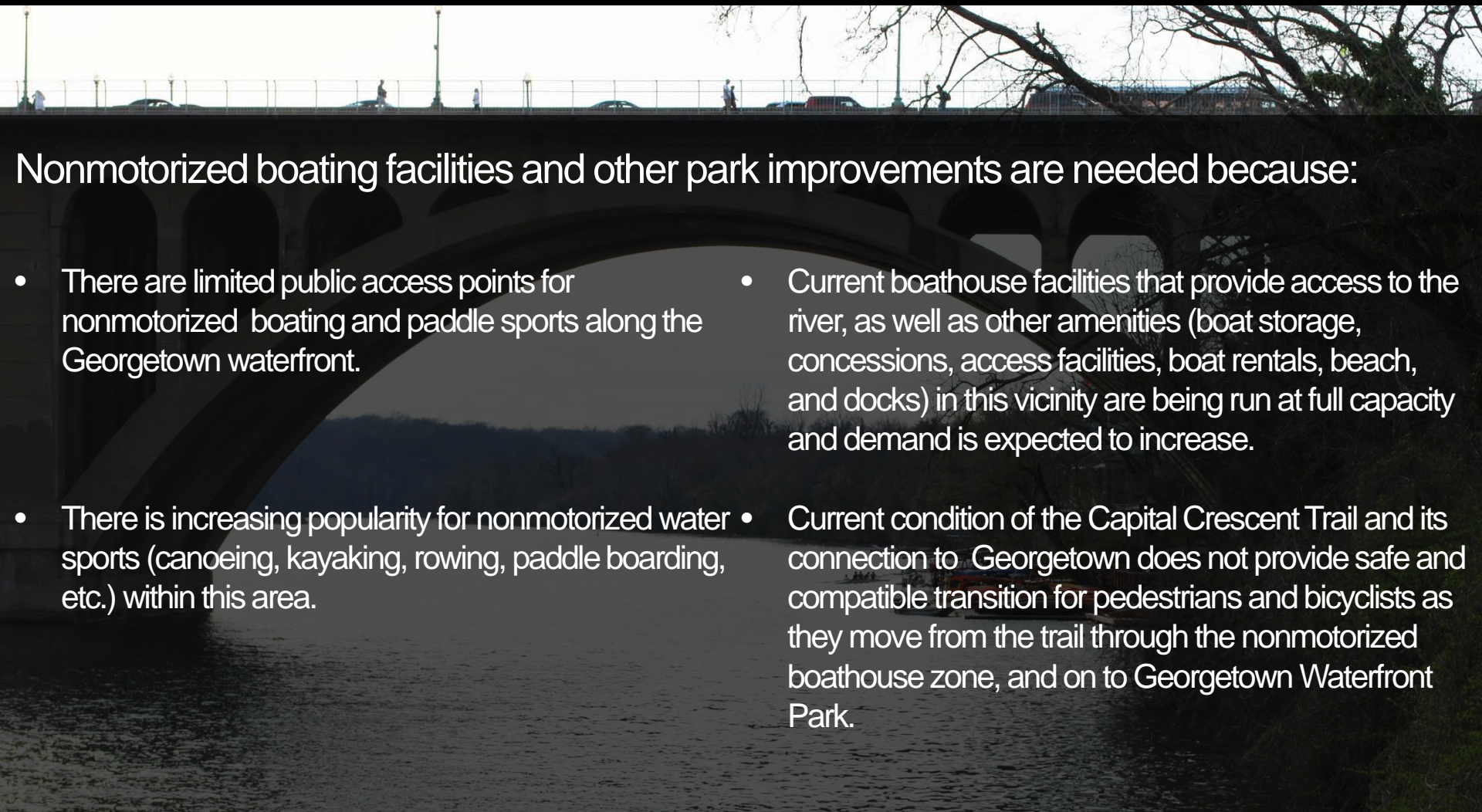
Purpose



The purpose of this project is to establish a Potomac River recreation zone that more fully supports nonmotorized recreation, increases the public's access to the river, improves functionality of the Capital Crescent Trail as it connects to Georgetown Waterfront Park, and respects the historic character, natural resources, and existing recreational use of the Chesapeake and Ohio Canal National Historical Park and Rock Creek Park.



Need



Nonmotorized boating facilities and other park improvements are needed because:

- There are limited public access points for nonmotorized boating and paddle sports along the Georgetown waterfront.
- Current boathouse facilities that provide access to the river, as well as other amenities (boat storage, concessions, access facilities, boat rentals, beach, and docks) in this vicinity are being run at full capacity and demand is expected to increase.
- There is increasing popularity for nonmotorized water sports (canoeing, kayaking, rowing, paddle boarding, etc.) within this area.
- Current condition of the Capital Crescent Trail and its connection to Georgetown does not provide safe and compatible transition for pedestrians and bicyclists as they move from the trail through the nonmotorized boathouse zone, and on to Georgetown Waterfront Park.



Laws & Procedures



NEPA NATIONAL
ENVIRONMENTAL
POLICY ACT

NHPA NATIONAL HISTORIC
PRESERVATION ACT
SECTION 106



NEPA Process

National Environmental Policy Act
of 1969, as amended
(42 U.S.C. 4321 et seq.)

CEQ Council on Environmental Quality
*Regulations for Implementing the
Procedural Provisions of NEPA*
(40 CFR Parts 1500-1508)

DOI Department of the Interior Regulations
*Implementation of the National
Environmental Policy Act of 1969*
(40 CFR Part 46) and Chapter 516 of
the Department Manual (516 DM)

DO-12 Department of the Interior, Director's
Order 12
*DO-12: Conservation Planning,
Environmental Impact Analysis, and
Decision-making and accompanying
DO-12 Handbook*

Process

1. Public Notification
2. Define Purpose and Need
3. Scoping
4. Data Collection
5. Describe the Affected Environment, refine alternatives, and prepare impact analysis of affected resource topics
6. Prepare Environmental Assessment
7. Release EA for 45-day Public Comment Period
8. Review and address all public comments received on the EA
9. Prepare and finalize appropriate Decision Document



NHPA Section 106 Process

National Historic Preservation Act

Section 106 regulations

36 CFR Part 800

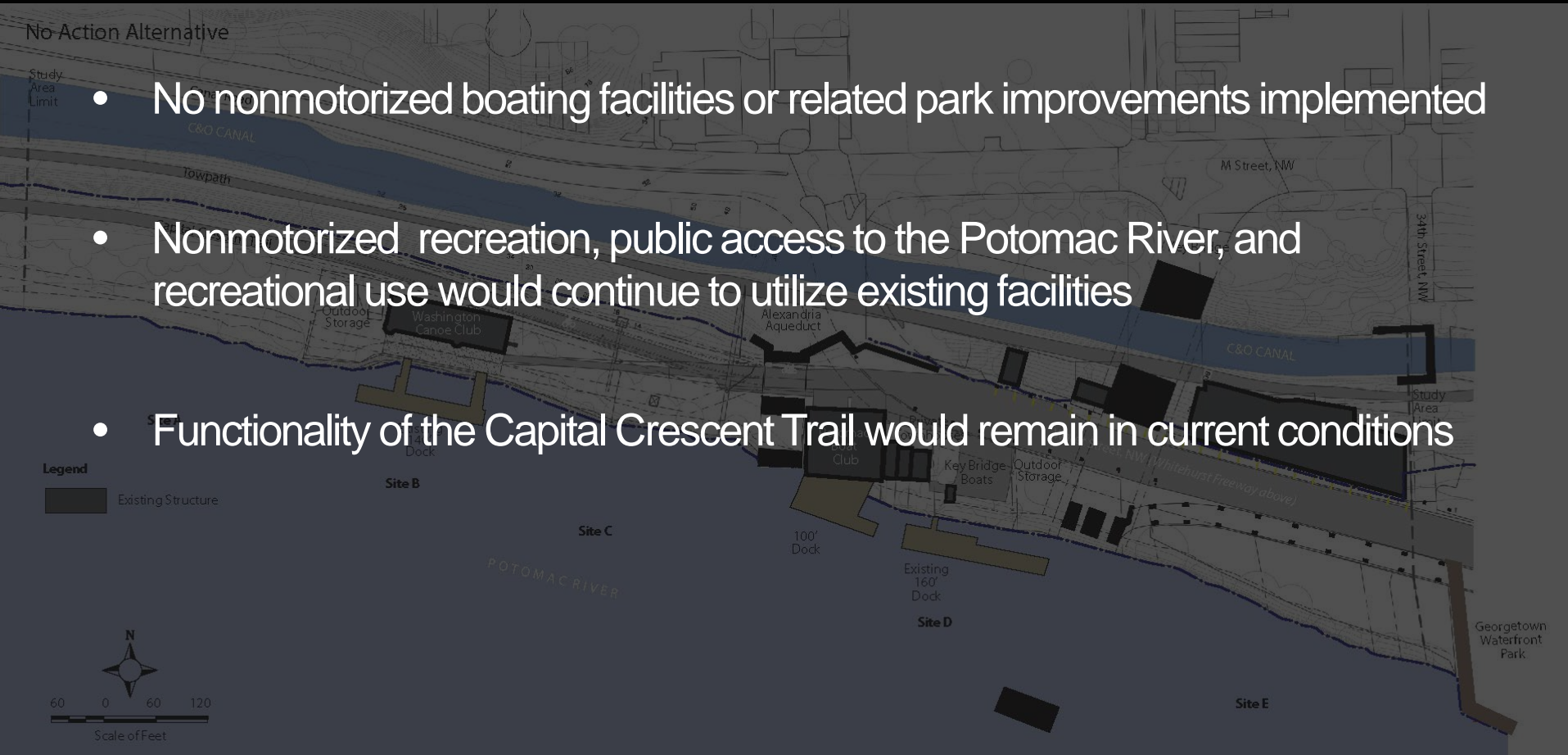
Process

1. Define Undertaking / Initiate Section 106
2. Involve the Public
3. Identify Consulting Parties
4. Define Area of Potential Effect (APE)
5. Identify Significant Cultural Resources in APE
6. Assess Effects on Significant Resources
7. Apply Criteria Of Adverse Effect
8. Continue Consultation
9. Draft Agreement Document, if needed

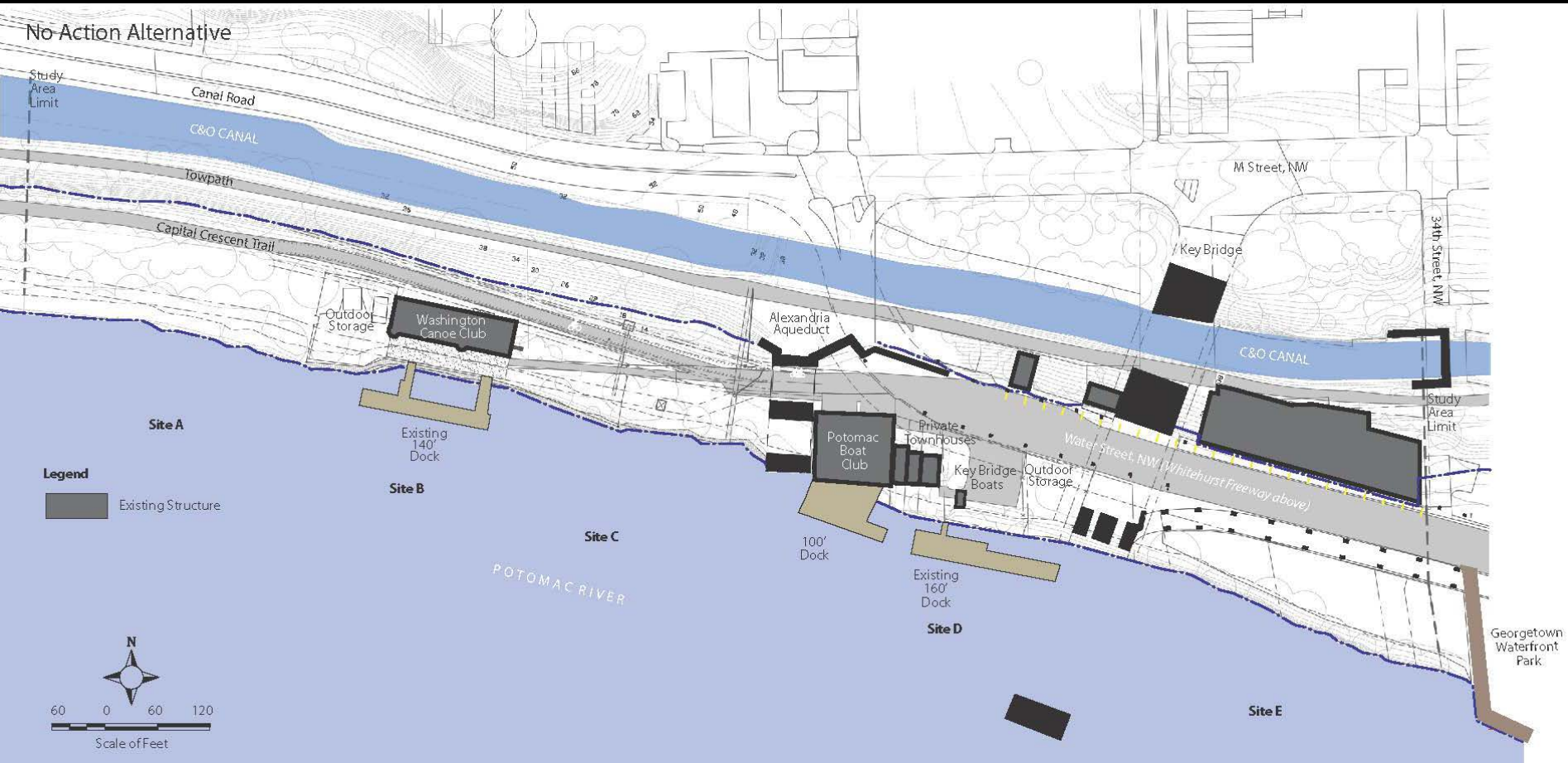


No Action Alternative

- No nonmotorized boating facilities or related park improvements implemented
- Nonmotorized recreation, public access to the Potomac River, and recreational use would continue to utilize existing facilities
- Functionality of the Capital Crescent Trail would remain in current conditions



No Action Alternative





Development of Preliminary Alternatives

Preliminary alternatives were developed during the EA internal scoping process taking into consideration known issues, public input gathered during the 2013 Feasibility Study for a Nonmotorized Boathouse Zone, past and present planning efforts, and alternative management approaches, *including*:

- Physical site constraints
- Existing facilities and uses
- Balancing diverse user demands
- Vehicular and pedestrian access
- Safety and use conflict in the project area
- Land ownership
- Use of the facilities
- Facility configuration and needs
- Development intensity
- Cooperative management of new facilities by educational institutions
- Land management for new facilities (land exchanges, leases, partnerships, etc.)



Alternative 1 – High Density



Alternative 2 – Medium Density



Alternative 3 – Low Density



Potential Impact Topics

A person is standing on a surfboard, riding a wave. The surfboard is white with a blue and white pattern on the bottom. The person is wearing a light blue shirt and dark pants. The water is a light blue-grey color with white foam from the wave.

- Soils
- Water quality
- Vegetation — including important communities (e.g., riparian)
- Wildlife and wildlife habitat
- Land use
- Socioeconomics
- Environmental justice
- Visitor use and experience
- Views / vistas
- Traffic
- Cultural resources (archeological sites, cultural landscapes, historic districts and structures)
- Health and safety
- Park management and operations



Opportunities to Comment

YOUR COMMENTS ARE ESSENTIAL TO THIS PROCESS.

Please submit comments by **March 6, 2015** at:

www.parkplanning.nps.gov/nmbzea

OR MAIL TO:

National Park Service
Tammy Stidham
ATTN: Georgetown Nonmotorized Boathouse Zone
Development Plan
1100 Ohio Drive, SW
Washington, D.C. 20242

U.S. DEPARTMENT OF THE INTERIOR
NATIONAL PARK SERVICE
Chesapeake and Ohio Canal National Historical Park
Rock Creek Park

