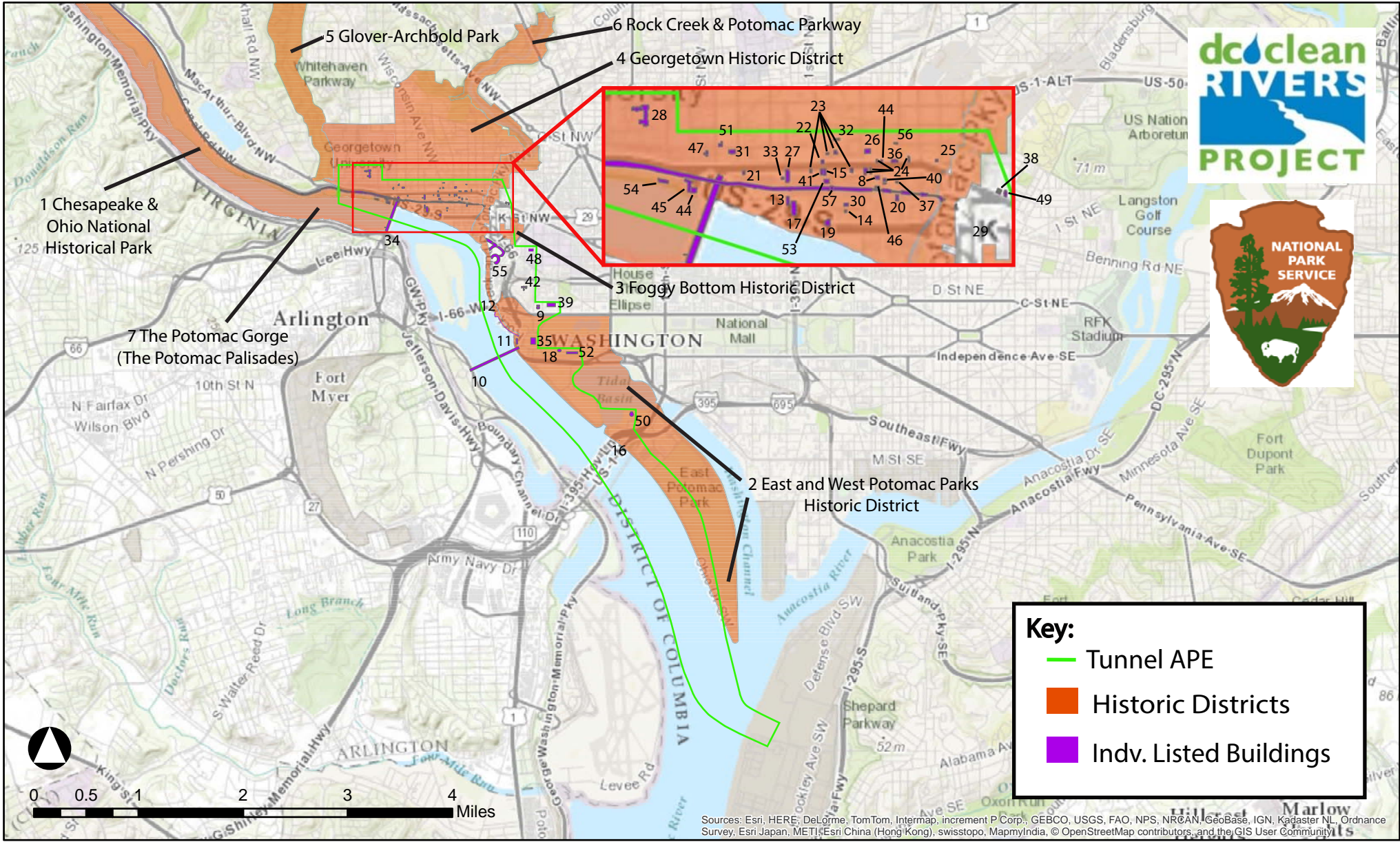


# Potomac River Tunnel: Tunnel APE Draft



Sources: Esri, HERE, DeLorme, TomTom, Intermap, increment P Corp., GEBCO, USGS, FAO, NPS, NRCAN, GeoBase, IGN, Kadaster NL, Ordnance Survey, Esri Japan, METI, Esri China (Hong Kong), swisstopo, MapmyIndia, © OpenStreetMap contributors, and the GIS User Community

### **Historic Districts**

1. Chesapeake and Ohio Canal National Historical Park (NR, NHL, DC, NM, NHP)
2. East and West Potomac Parks Historic District (NR, DC)
3. Foggy Bottom Historic District (NR, DC)
4. Georgetown Historic District (NR, NHL, DC)
5. Glover-Archbold Park (NR, DC)
6. Rock Creek & Potomac Parkway (Res. 360) (DC)
7. The Potomac Gorge (Potomac Palisades) (DC)

### **Historic Sites<sup>1</sup>**

8. Adams-Mason Houses (DC)
9. American Institute of Pharmacy (NR, DC)
10. Arlington Memorial Bridge (NR, DC)
11. Arlington Memorial Bridge - Related Features, Rock Creek & Potomac Parkway Terminus (NR, DC)
12. Arlington Memorial Bridge - Related Features, The Watergate (DC, NR)
13. Bomford Mill (Pioneer Flour Mills; Flour Mill) (DC)
14. Brickyard Hill House (DC)
15. City Tavern (NR, DC)
16. Cuban Friendship Urn (DC)
17. DC Paper Manufacturing Company (Paper Mill) (DC)
18. DC War Memorial (NR, DC)
19. Dodge Warehouses (& Adjacent Structures) (DC)
20. Duvall Foundry (DC)
21. Forrest-Marbury House (DC)
22. Georgetown Commercial Buildings - Thomas Cramphin Buildings (DC)

23. Georgetown Commercial Buildings, 3068, 3056, 3072, 3112, 3116, 2919 M Street, N.W. & 1216, 1219, 1221, 1249 Wisconsin Avenue, NW (DC)
24. Georgetown Commercial Buildings, M Street and Wisconsin Avenue, Reckert House (DC)
25. Georgetown Commercial Buildings, Thomas Sims Corner & Houses, Ross & Getty Building (DC)
26. Georgetown Custom House and Post Office (NR, DC)
27. Georgetown Market (NR, DC)
28. Georgetown University Healy Hall/Old North (NR, NHL, DC)
29. Godey Lime Kilns (Washington Lime Kilns) (NR, DC)
30. Grace Church (NR, DC)
31. Halcyon House (Benjamin Stoddert House) (NR, DC)
32. John Lutz House (Aged Woman's Home; Female Union Benevolent Society) (DC)
33. Joseph Carleton House (DC)
34. Key Bridge (NR, DC)
35. Lincoln Memorial & Statue of Lincoln (NR, DC)
36. Loughborough-Patterson House (Junior League of Washington) (DC)
37. McCleery House (DC)
38. Mullett Rowhouses (NR, DC)
39. National Academy of Sciences (NR, DC)
40. Nicholas Hedges House and Federal Houses (DC)
41. Old Engine Company No. 5 (Bank of Columbia, Georgetown Town Hall & Mayor's Office) (DC)
42. Old Naval Observatory (National Observatory; Naval Museum of Hygiene; Naval Medical School) (NR, NHL, DC)
43. Old Stone House (NR, DC)
44. Potomac Aqueduct Bridge Abutment and Pier (DC)
45. Potomac Boat Club (NR, DC)
46. Potomac Masonic Lodge No. 5 (DC)
47. Prospect House (Lingan-Templeman House) (NR, DC)

48. Saint Mary's Episcopal Church (Saint Mary's Chapel) (NR, DC)
49. The Luzon (The Westover) (NR, DC)
50. Jefferson Memorial (NR, DC)
51. Quality Hill (NR, DC)
52. Vietnam Veterans Memorial (NR)
53. Vigilant Firehouse (NR, DC)
54. Washington Canoe Club (NR, DC)
55. Watergate (NR, DC)
56. William Knowles House (DC)
57. Wisconsin Avenue Bridge (High Street Bridge) (DC)

### **DOEs and Pending Designations (Not on map)**

58. Proposed Old Naval Observatory HD (pending designation)
59. Potomac Annex Historic District (DOE)
60. 2430 E Street & 2301 Constitution Avenue NW – E Street Complex (pending designation)
61. Kennedy Center (DOE)
62. West Heating Plant (DOE, Georgetown HD)

### **Key:**

DOE – Property has a Determination of Eligibility  
DC – Property listed on the DC Inventory of Historic Sites  
NR – Property listed in the National Register of Historic Places  
NHP – Property is a National Historic Park  
NHL – Property is a National Historic Landmark  
NM – Property is a National Monument

---

<sup>1</sup> Most of these sites are also contributing buildings to the HDs mentioned above; however to save space, they are only identified here by their individual listings.