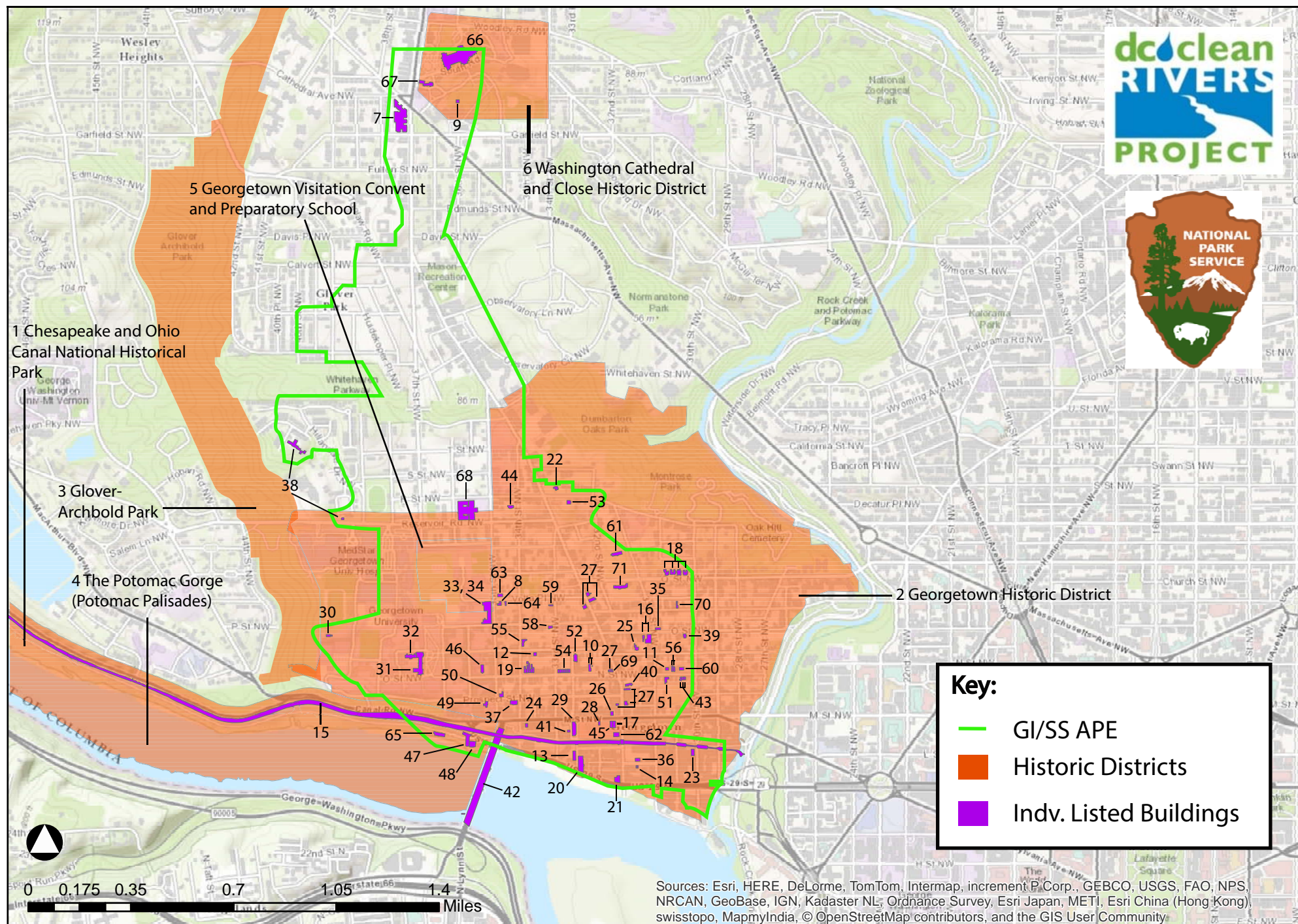


Potomac River Tunnel: Green Infrastructure (GI/SS) APE Draft



Historic Districts

1. Chesapeake and Ohio Canal National Historical Park (NR, NHL, DC, NM, NHP)
2. Georgetown Historic District (NR, NHL, DC)
3. Glover-Archbold Park (NR, DC)
4. The Potomac Gorge (Potomac Palisades) (DC)
5. Georgetown Visitation and Preparatory School (NR, DC)
6. Washington Cathedral and Close Historic District (NR, DC)

Historic Sites

7. Alban Towers (and Interiors) (NR, DC)
8. Alexander Melville Bell 4House (DC)*
9. All Hallows Guild Traveling Carousel (NR)
10. Barber-Caperton House (& Gazebo) (DC)*
11. Beall-Peter-Dick House (DC)*
12. Bodisco House (Clement Smith House) (DC)*
13. Bomford Mill (Pioneer Flour Mills; Flour Mill) (DC)*
14. Brickyard Hill House (DC)*
15. Chesapeake and Ohio Canal (NR, DC)*
16. Christ Church (& Rectory) (NR, DC)*
17. City Tavern (NR, DC)
18. Cooke's Row (DC)*
19. Cox's Row (DC)*
20. DC Paper Manufacturing Company (Paper Mill) (DC)*
21. Dodge Warehouses (& Adjacent Structures) (DC)*
22. Dougall House (DC)*
23. Duvall Foundry (DC)*
24. Forrest-Marbury House (DC)*
25. Foxall-McKenney House (DC)*
26. Georgetown Commercial Buildings - Thomas Cramphin Buildings (DC)
27. Georgetown Commercial Buildings, 2919, 3068, 3056, 3072, 3112, 3116 M Street, N.W. & 1218, 1219, 1221, 1249, 1304, 1515, 1517, 1522, 1524, 1527, 1529 Wisconsin Avenue, NW (DC)*

28. Georgetown Commercial Buildings, M Street and Wisconsin Avenue, Reckert House (DC)
29. Georgetown Market (NR, DC)*
30. Georgetown University, Astronomical Observatory (NR, DC)*
31. Georgetown University Healy Hall (NR, NHL, DC)
32. Georgetown University, Old North (DC)*
33. Georgetown Visitation Convent and Preparatory School – Chapel (DC)
34. Georgetown Visitation Convent and Preparatory School – Monastery and Academy Building (DC)*
35. Godey House (DC)*
36. Grace Church (NR, DC)*
37. Halcyon House (Benjamin Stoddert House) (NR, DC)*
38. Hillandale (Main Residence & Gatehouse) (NR, DC)
39. Isaac Tenney House (DC)*
40. John Lutz House (Aged Woman's Home; Female Union Benevolent Society) (DC)*
41. Joseph Carleton House (DC)*
42. Key Bridge (NR, DC)
43. Laird-Dunlop House (DC)*
44. Mackall-Worthington House (DC)*
45. Old Engine Company No. 5 (Bank of Columbia, Georgetown Town Hall & Mayor's Office) (DC)*
46. Old Holy Trinity Church (Convent of Mercy) (DC)*
47. Potomac Aqueduct Bridge Abutment and Pier (DC)
48. Potomac Boat Club (NR, DC)*^
49. Prospect House (Lingan-Templeman House) (NR, DC)*
50. Quality Hill (John Thompson Mason House; Charles Worthington House) (NR, DC)*
51. Riggs-Riley House (DC)*
52. Saint John's Church, Georgetown (DC)*
53. Scott-Grant House (DC)*
54. Smith Row (DC)*
55. Smith-Bruce House (DC)*
56. Steven-Billings Houses (DC)*
57. The Luzon (The Westover) (NR, DC)
58. The Yellow House (DC)*
59. The Yellow Tavern (DC)*
60. Thomas Beall House (Newton D. Baker House) (NR, NHL, DC)*
61. Tudor Place (NR, NHL, DC)*

62. Vigilant Firehouse (NR, DC)*
63. Volta Bureau (NR, NHL, DC)*
64. Volta Laboratory (Alexander Graham Bell Laboratory; Bell Carriage House) (DC)*
65. Washington Canoe Club (NR, DC)*^
66. Washington Cathedral (Cathedral Church of Saint Peter & Saint Paul & Close; National Cathedral) (DC, NR) #
67. Washington Cathedral, Saint Alban's Church, Guild Hall, Rectory & Satterlee Hall (NR, DC)65
68. Western High School (Duke Ellington School of the Arts (NR, DC)
69. William Wilson Corcoran Store (DC)*
70. Edward Linthicum House (DC)*
71. Bowie-Sevier House (DC)*

Key:

DOE – Property has a Determination of Eligibility
DC – Property listed on the DC Inventory of Historic Sites
NR – Property listed in the National Register of Historic Places
NHP – Property is a National Historic Park
NHL – Property is a National Historic Landmark
NM – Property is a National Monument

* Within Georgetown Historic District

^ Within Potomac Gorge (Potomac Palisades)

Within Washington Cathedral Historic District