

*Briefing on:*

*DC Clean Rivers Project  
Potomac River Tunnel*

*Briefing for:*

*Section 106 Consulting Party Meeting*

January 29, 2015

# Agenda

---

- Introduction & Meeting Objectives
- DC Clean Rivers Project background
- Historic Preservation and Resources
  - Review Consultation Process
  - Draft Area of Potential Effects (APE) and Historic Resources
- Discussion and Questions
- Next Steps

# Introduction and Meeting Objectives

---

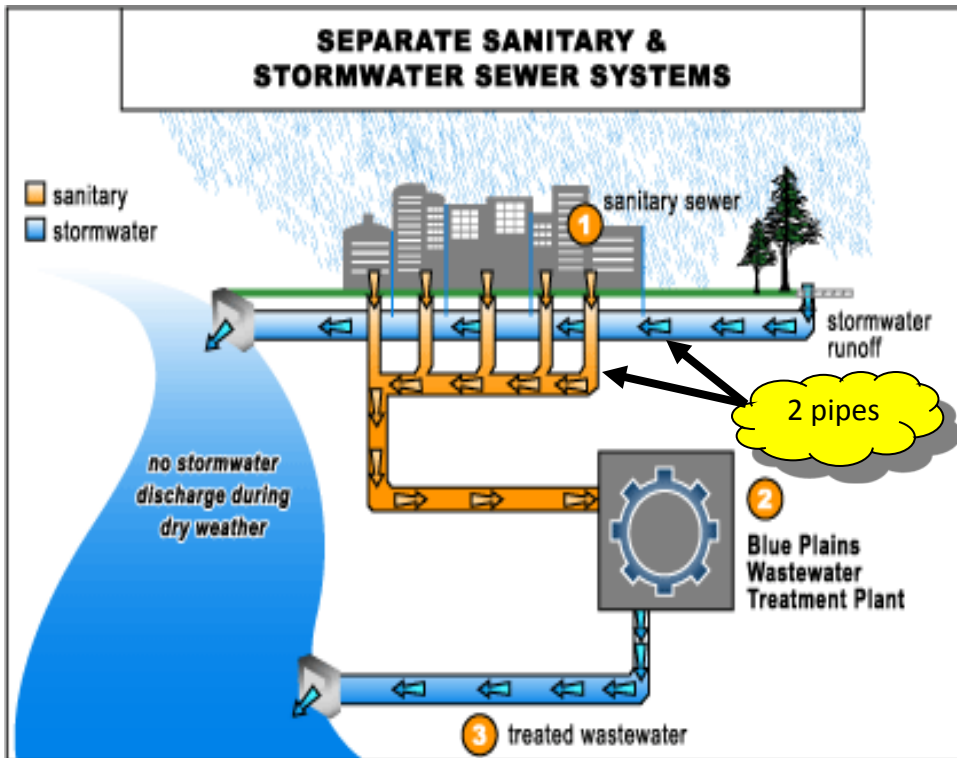
- Initiate formal consultation
- Introduce undertaking
- Review initial design concepts
- Review draft APE
- Introduce site and historic resources
- Identify and discuss potential preservation issues

# DC CLEAN RIVERS PROJECT BACKGROUND

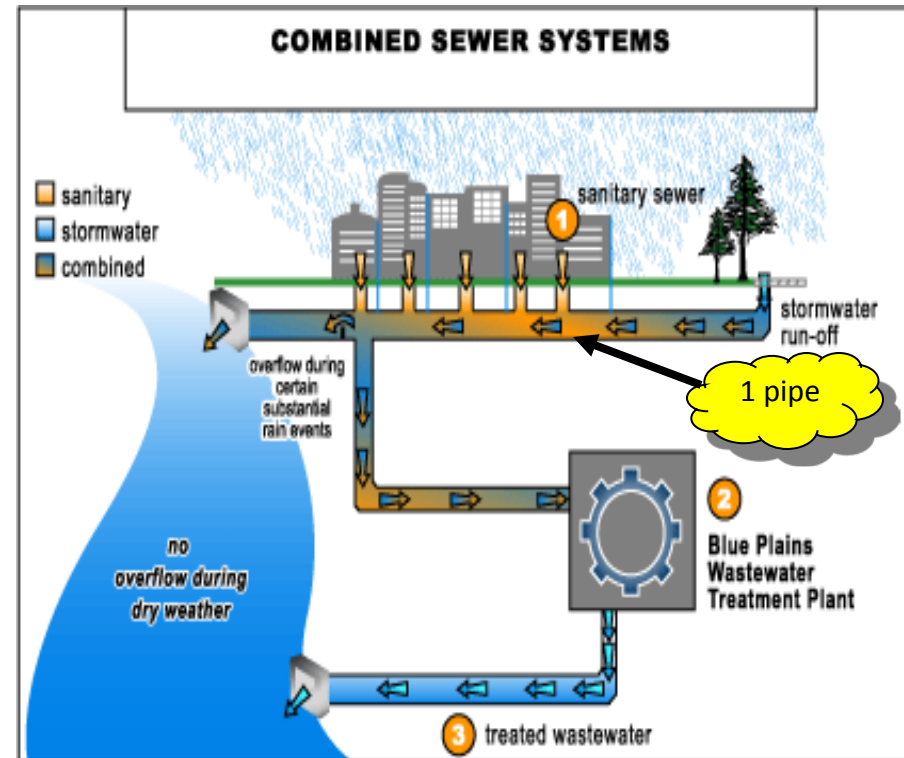


# Background

## Separate and Combined Sewers



100% of suburbs  
67% of D.C.

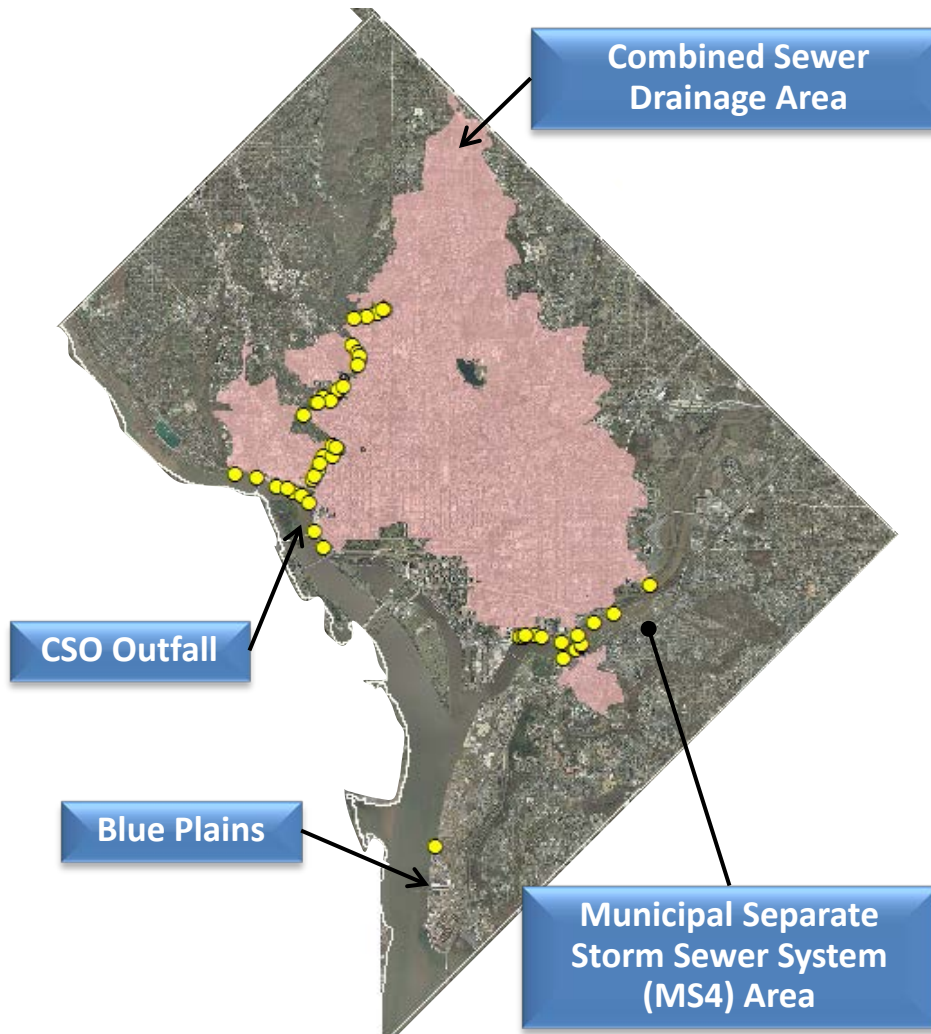


0% of suburbs  
33% of D.C.

# Background

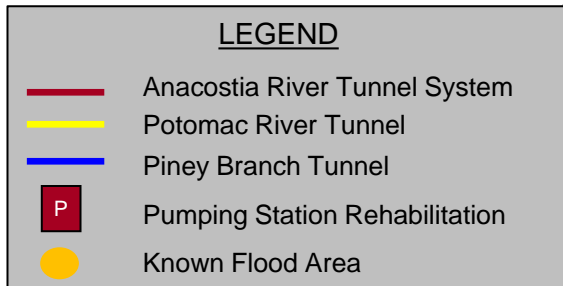
## DC's Combined Sewer System

---



- 1/3 area is combined (12,478 acres)
- 53 CSO outfalls
  - 15 to Anacostia
  - 10 to Potomac
  - 28 to Rock Creek
- Three receiving waters
  - Anacostia River
  - Potomac River
  - Rock Creek

# DC Clean Rivers Project and Nitrogen Removal Programs



DC CLEAN RIVERS PROJECT AND NITROGEN REMOVAL PROGRAMS
<ul style="list-style-type: none"> <li>DC Clean Rivers Project: \$2.6 Billion</li> <li>Nitrogen Removal: \$950 Million</li> <li>Total &gt; \$ 3.5 Billion</li> <li>20 yr implementation (2005 – 2025)</li> <li>96% reduction in CSOs &amp; flood relief in Northeast Boundary</li> <li>Approx. 1 million lbs/yr nitrogen reduction predicted</li> </ul>

Separate CSO  
031, 037, 053  
and 058

Potomac  
Pumping  
Station

Luzon Valley (Separated)

Green Infrastructure at DC  
Water Facilities

Combined Sewer Area

East Side  
Pumping Station

Main and O Street  
Pumping Stations

Separate CSO 006

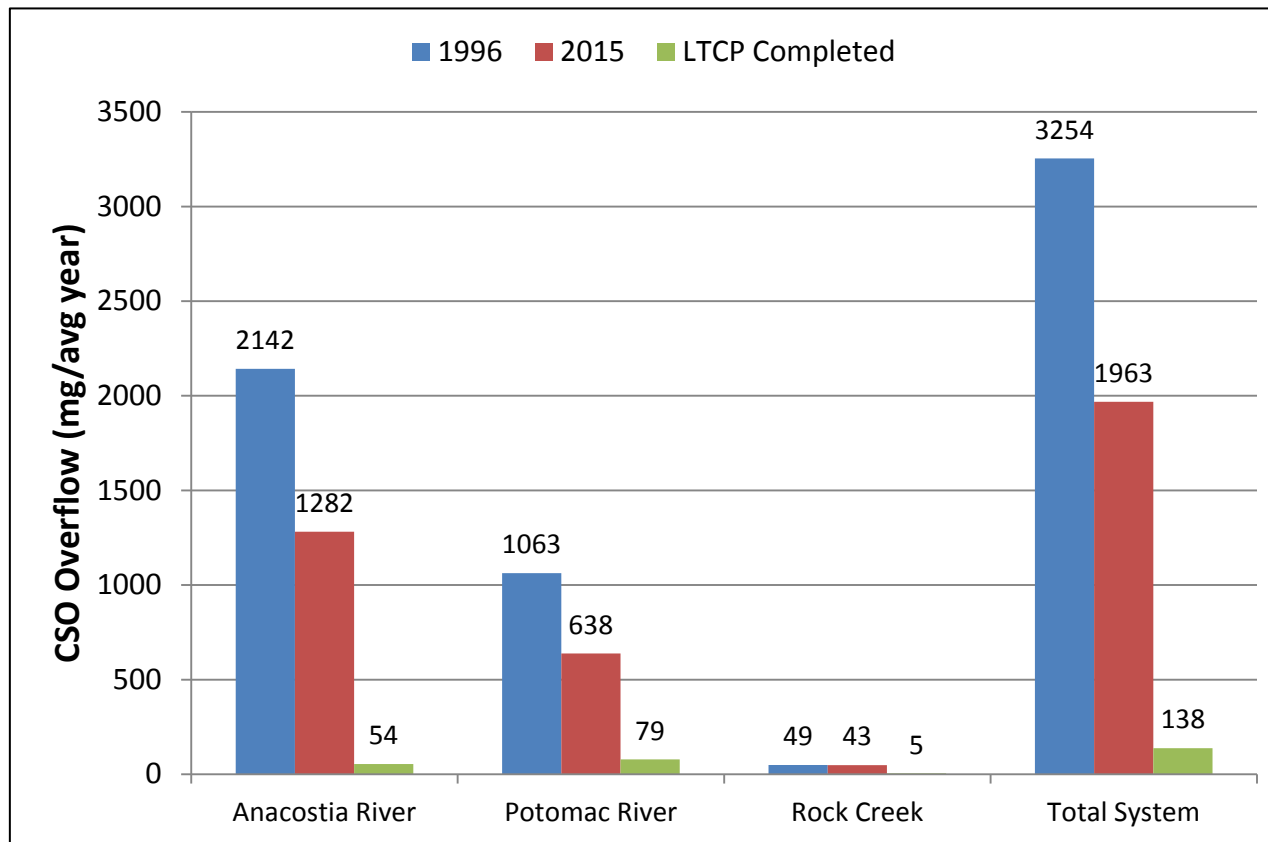
Poplar Point  
Pumping Station

Enhanced Clarification  
Treatment and Nitrogen  
Removal at Blue Plains



# Background

## CSO Control Progress to Date



Predicted Progress in Controlling CSOs



Trash on Anacostia from CSO, Storm Water and Upstream sources



CSO 017 Overflowing to Anacostia River

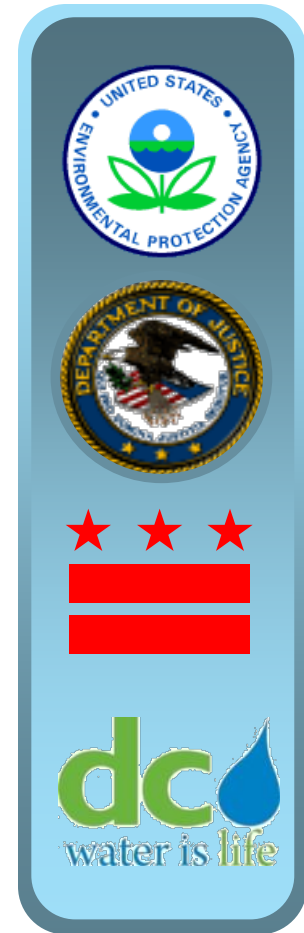


# Background

## DC Water's Consent Decree

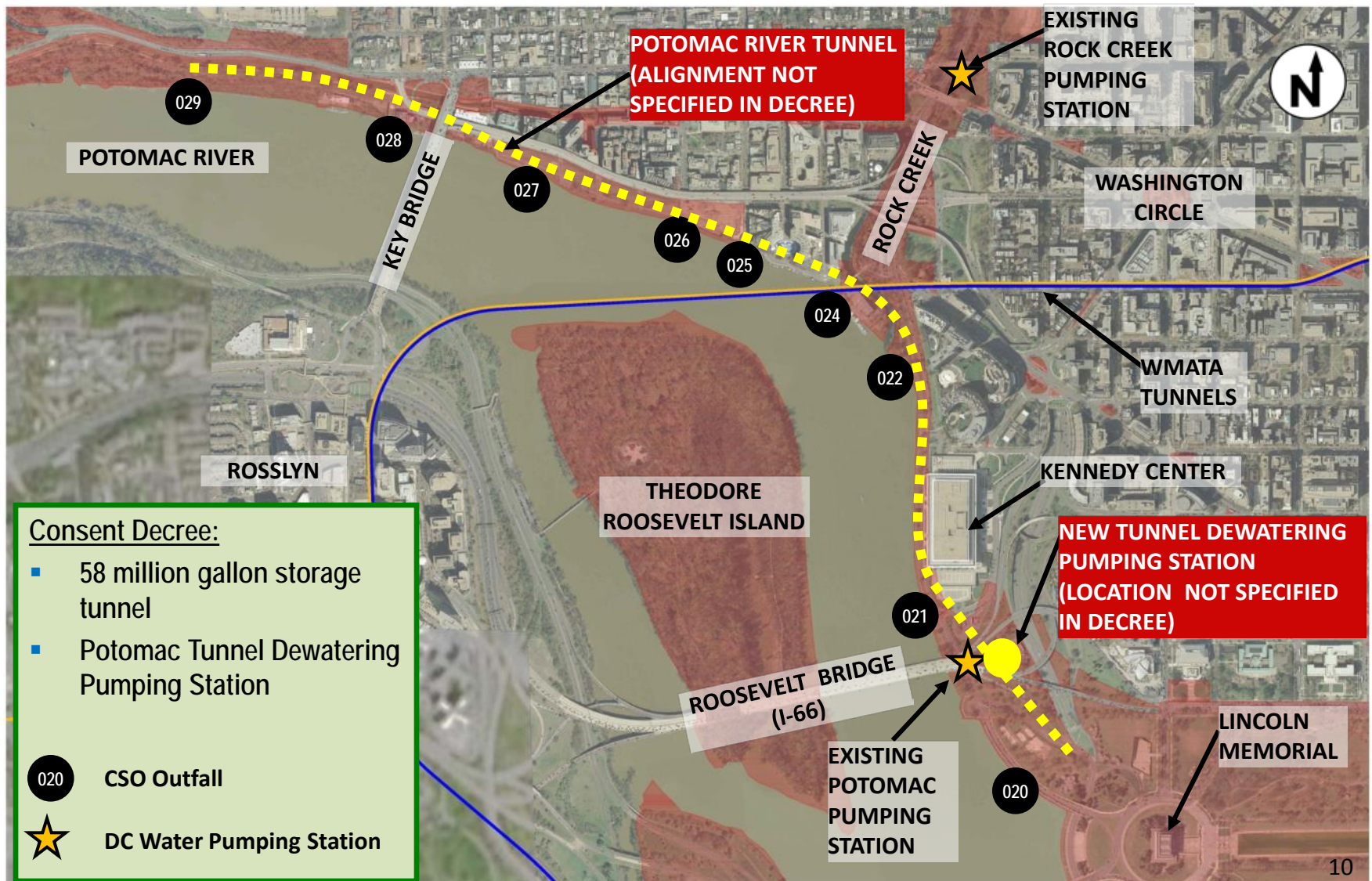
---

- CSO Long Term Control Plan implementation is required by a Consent Decree between U.S. Government, District Government and DC Water
- Entered by Court March 23, 2005
- Requires implementation by specified schedule
- Stipulated penalties for failure to meet specified schedules



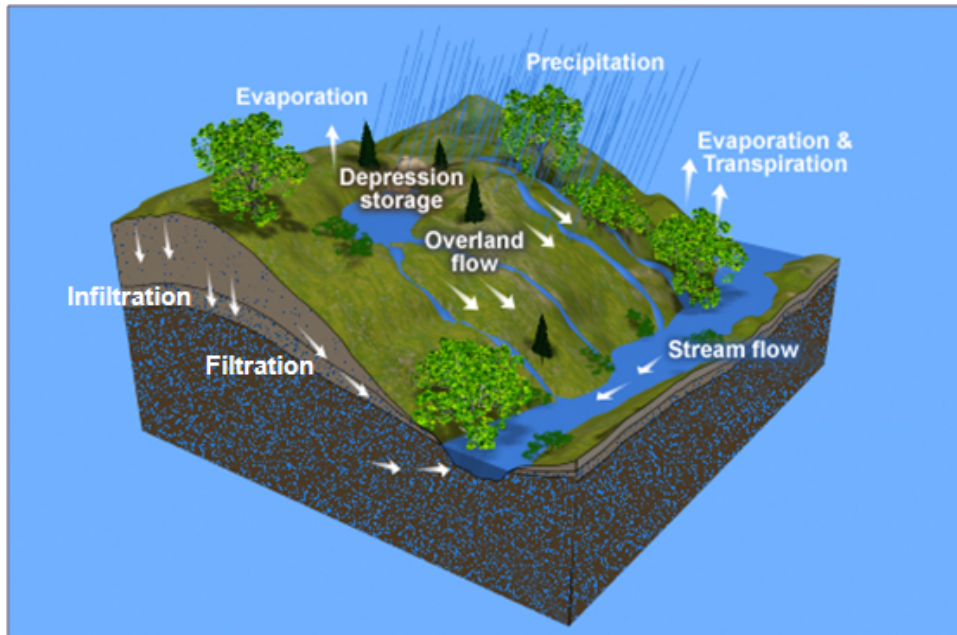
# Background

## Consent Decree Potomac River Tunnel



# Background

## What is Green Infrastructure?



**Bioretention/Rain Gardens**  
*Infiltration, Filtration, Detention  
Storage, Evapotranspiration*



**Permeable Pavement**  
*Infiltration, Filtration, Detention  
Storage*



**Cisterns/Rain  
Barrels**  
*Storage*



**Vegetated Swales**  
*Filtration,  
Infiltration,  
Evapotranspiration*



**Native Landscaping**  
*Infiltration,  
Evapotranspiration*

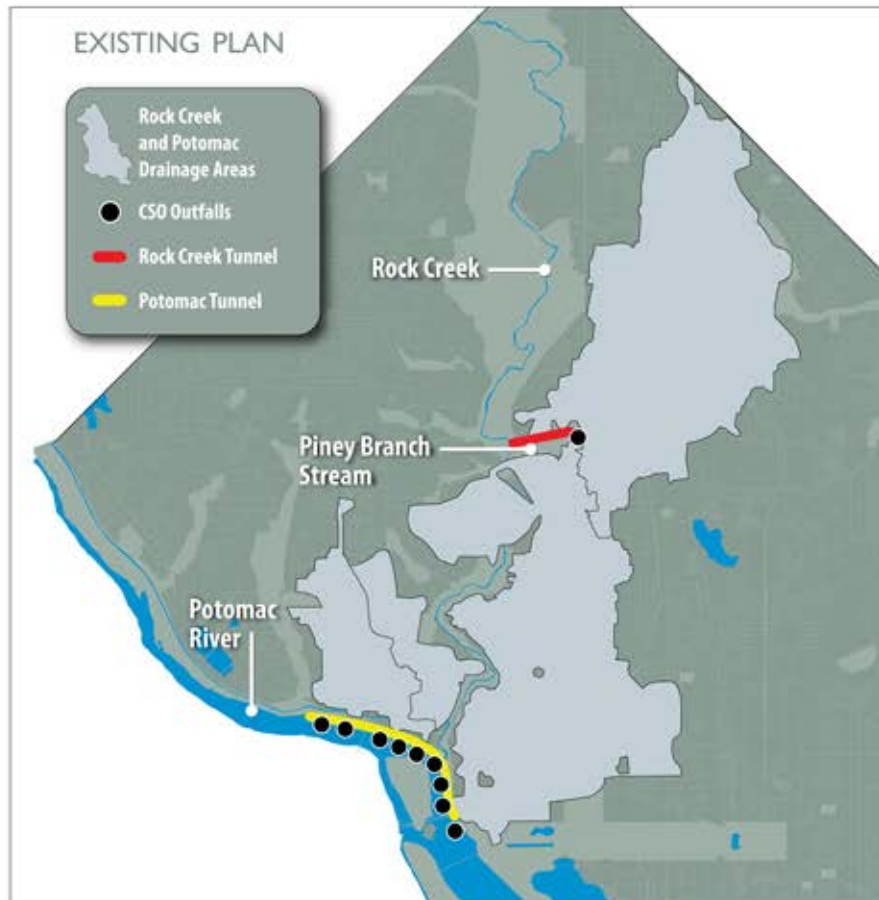


**Green Roofs**  
*Filtration, Retention Storage,  
Evapotranspiration*





# DC Water Solicited Public Comments on the following Modification Jan - April 2014



# DESIGN CONCEPTS

## INITIAL DESIGN CONCEPTS

# Initial Design Concepts Typical Tunnel Facilities

## LEGEND



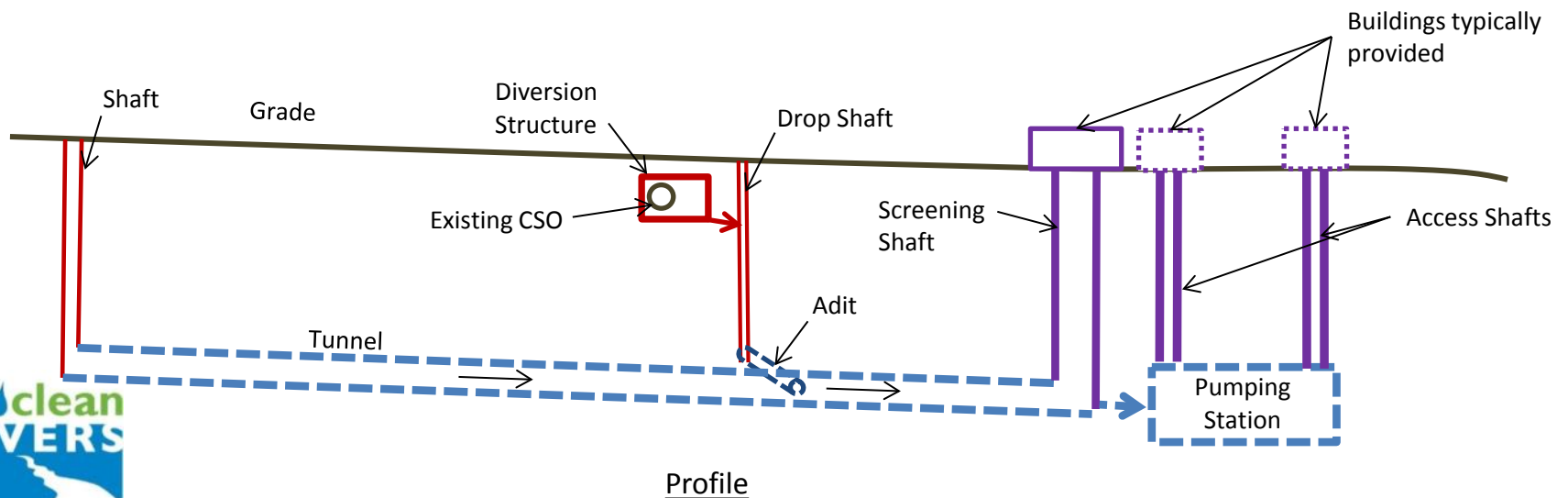
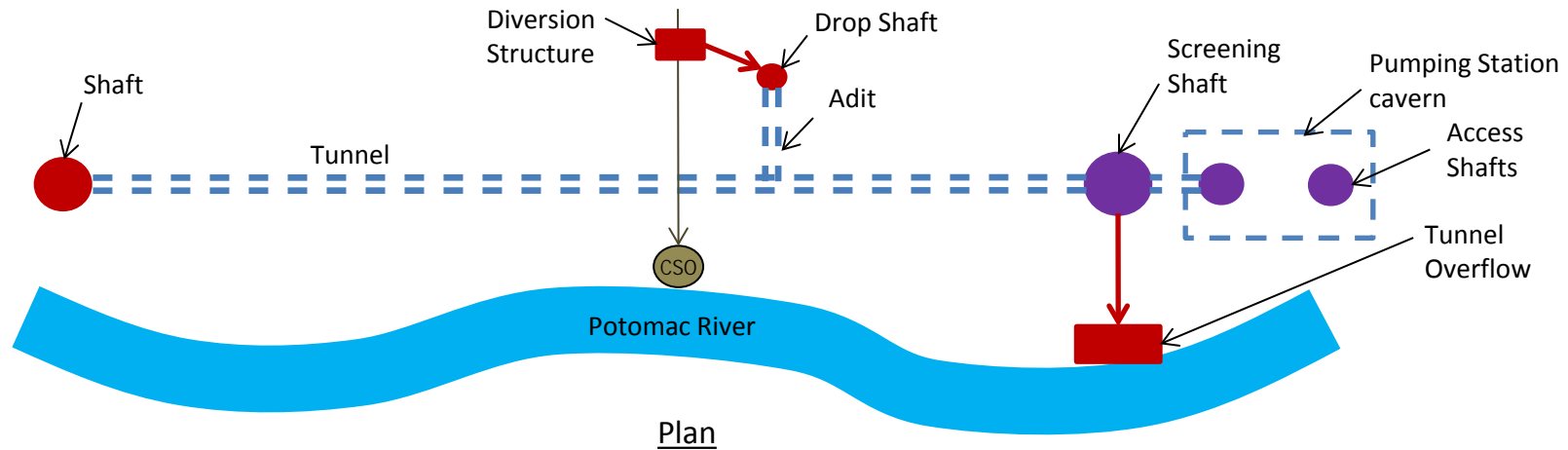
Below grade



Surface access req'd to construct, but finished facility can be below grade

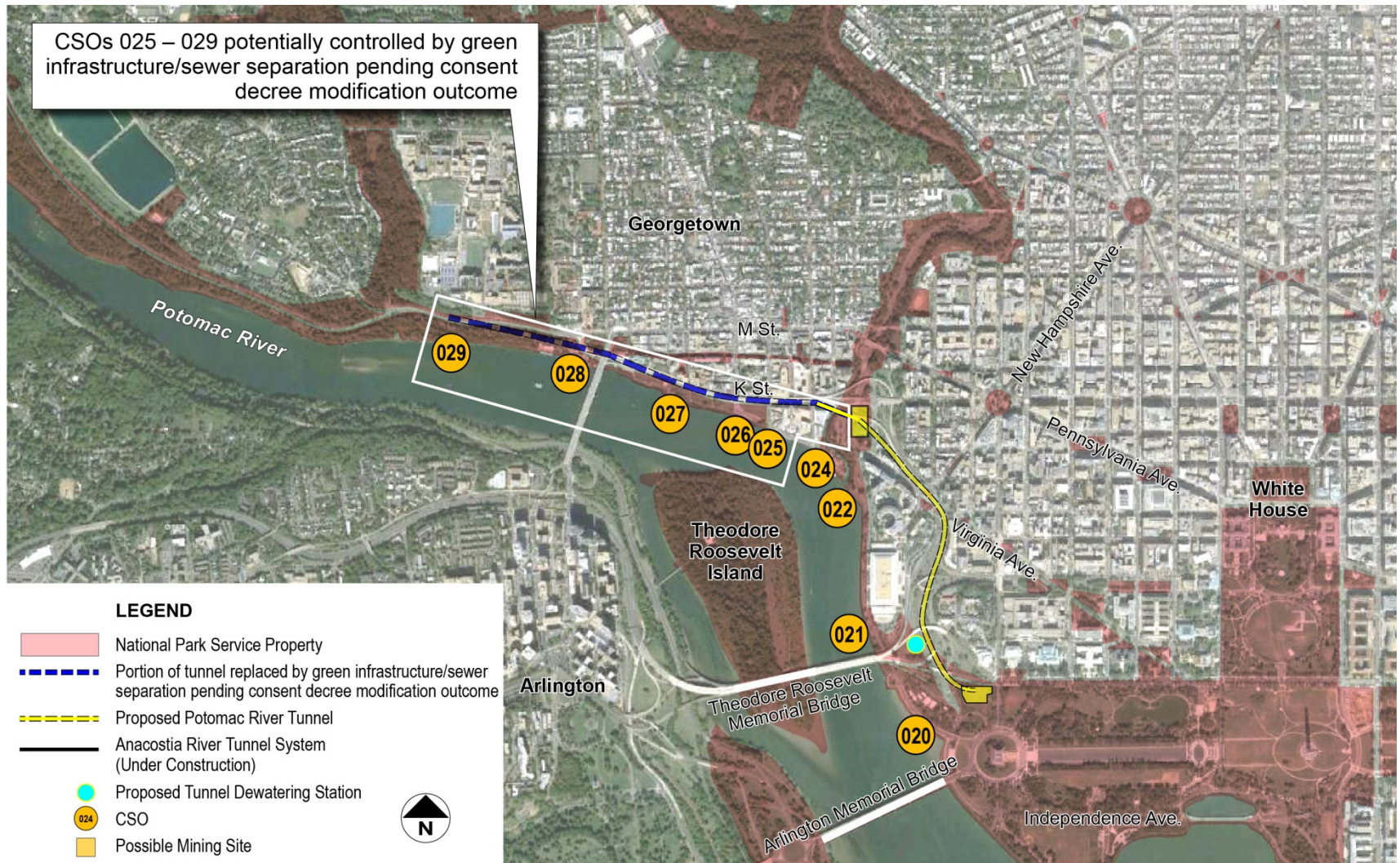


Above-grade facilities typically required



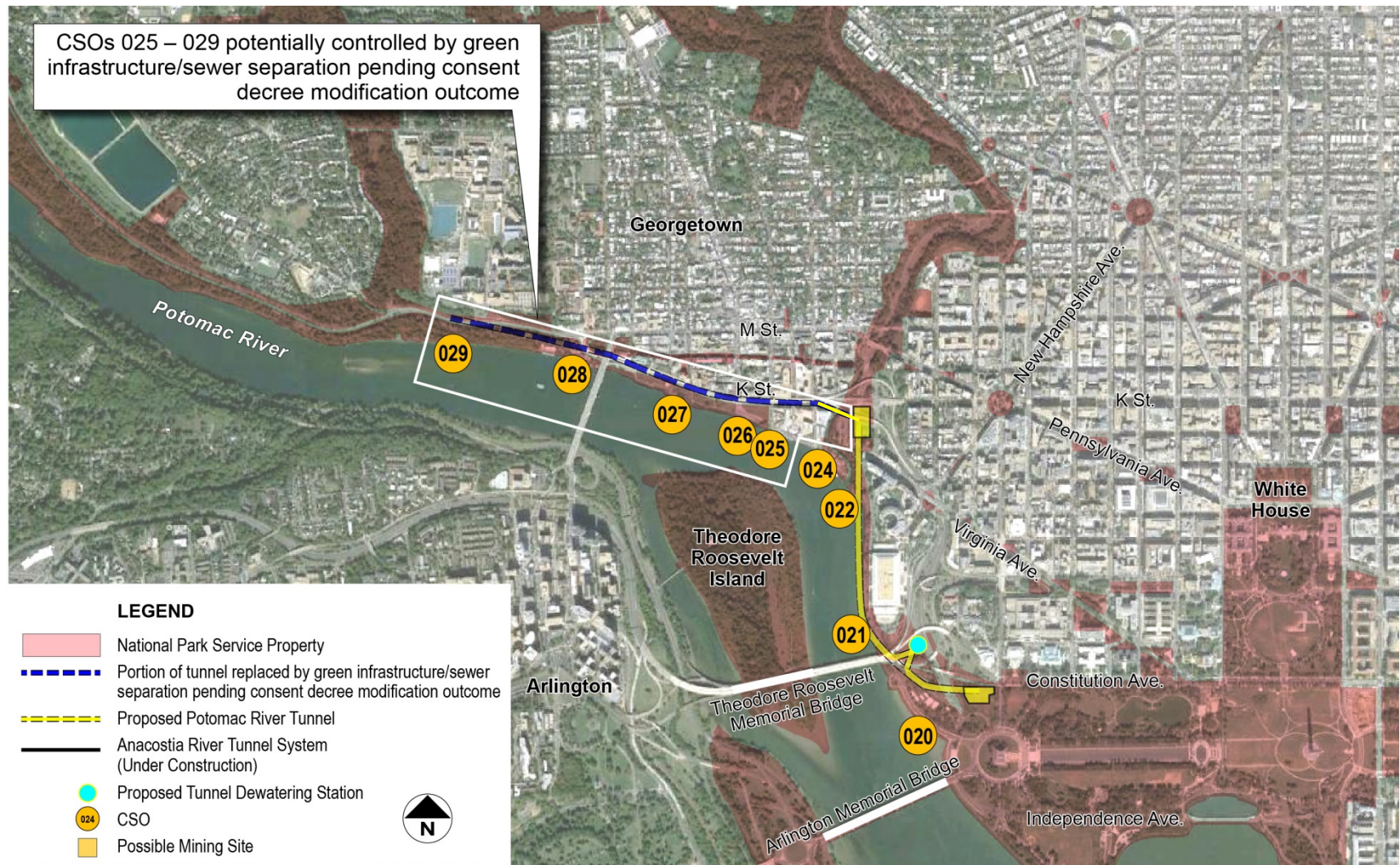


# Initial Design Concepts Land Tunnel



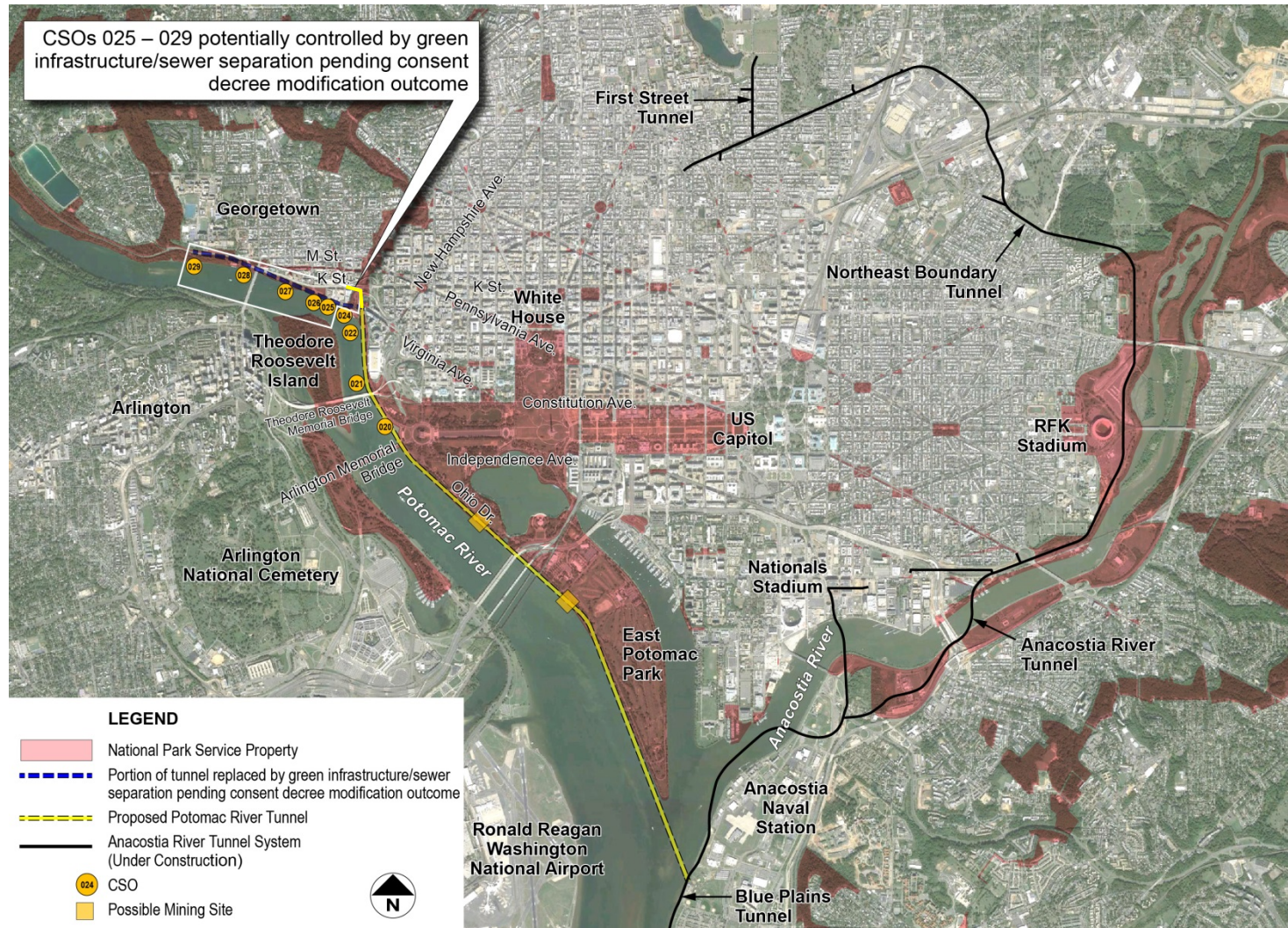


# Initial Design Concepts River Tunnel





# Initial Design Concepts Gravity Tunnel



# **HISTORIC PRESERVATION AND RESOURCES REVIEW CONSULTATION PROCESS**

# Review Consultation Process

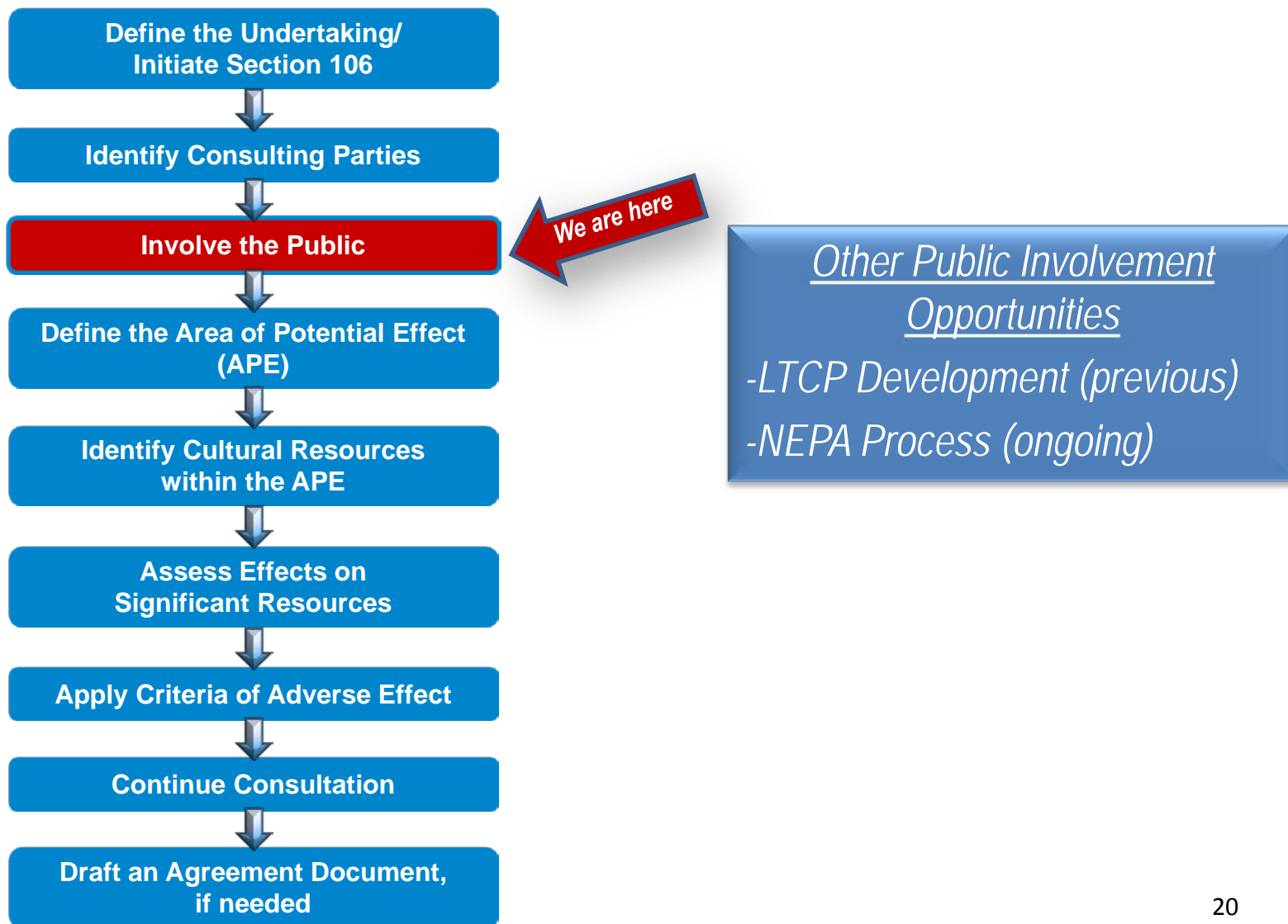
## Historic Preservation: Applicable Laws

---

- National Historic Preservation Act
  - Section 106
- National Environmental Policy Act
  - Environmental Impact Statement (EIS)
- Section 9b
  - District Preservation Law (2-144)
  - DCHPO Review of District Undertakings

# Review Consultation Process

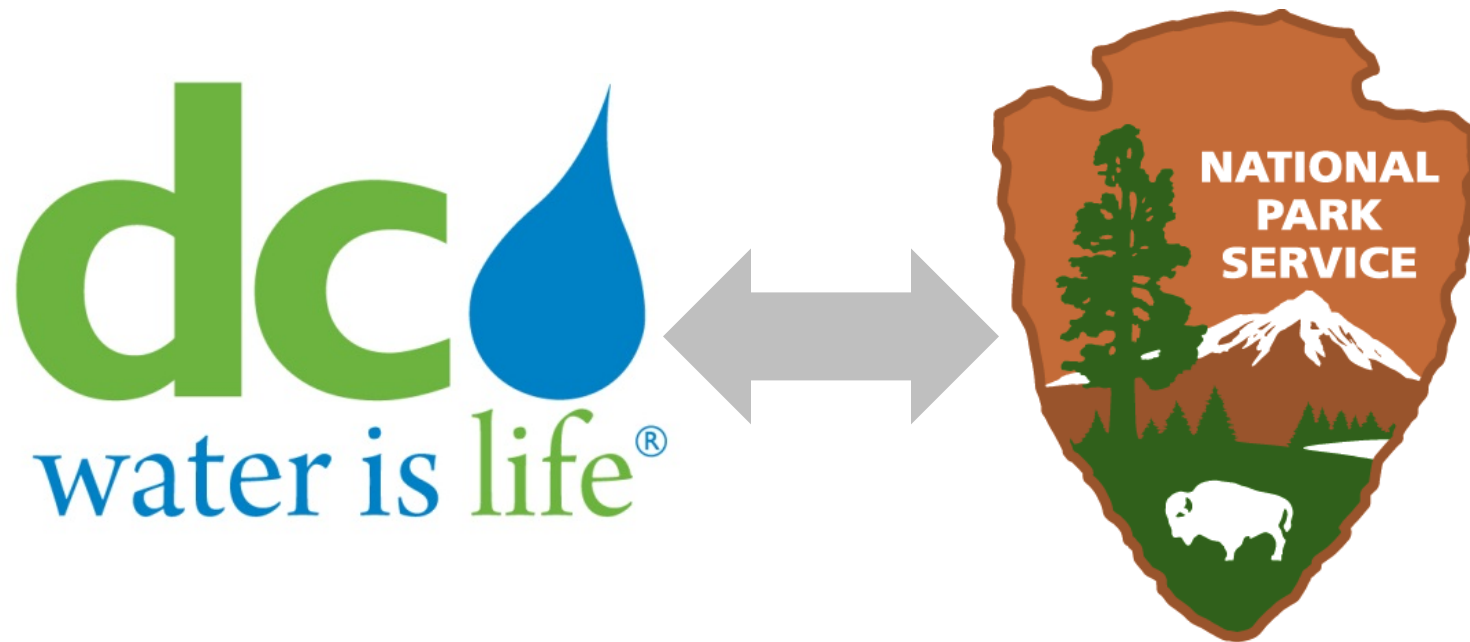
## NHPA Section 106 Process



# Review Consultation Process Lead Agencies

---

- DC Water is responsible for constructing the Potomac River Tunnel
- The tunnel will be primarily under National Park Service Land



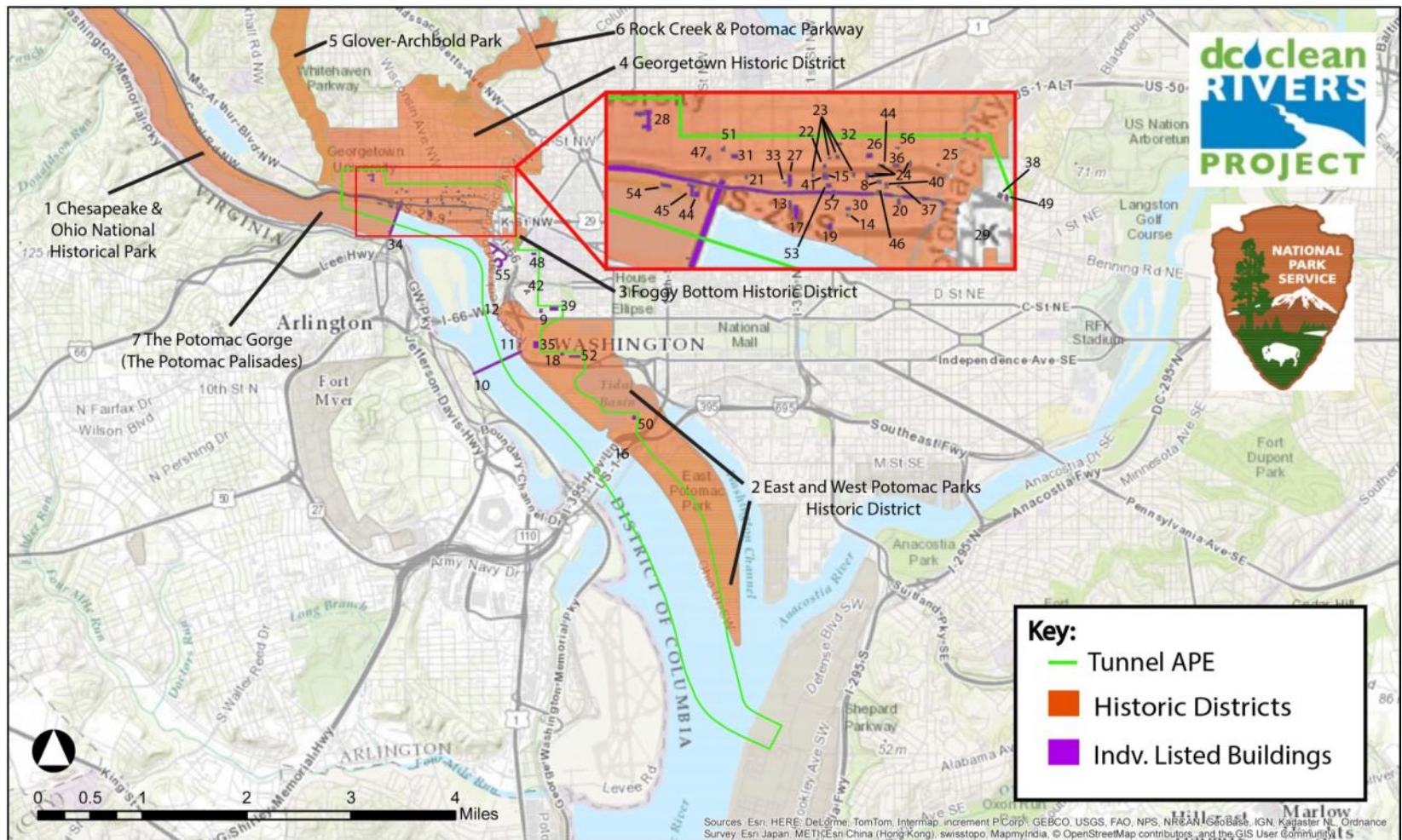
Co-lead Agencies for EIS

# **HISTORIC PRESERVATION AND RESOURCES DRAFT AREA OF POTENTIAL EFFECT AND HISTORIC RESOURCES**



# Draft Area of Potential Effect and Historic Resources Historic Resources (Tunnel APE)

## Potomac River Tunnel: Tunnel APE Draft



# Draft Area of Potential Effect and Historic Resources

## List of Historic Resources (Tunnel APE)

### Historic Districts

1. Chesapeake and Ohio Canal National Historical Park (NR, NHL, DC, NM, NHP)
2. East and West Potomac Parks Historic District (NR, DC)
3. Foggy Bottom Historic District (NR, DC)
4. Georgetown Historic District (NR, NHL, DC)
5. Glover-Archbold Park (NR, DC)
6. Rock Creek & Potomac Parkway (Res. 360) (DC)
7. The Potomac Gorge (Potomac Palisades) (DC)

### Historic Sites<sup>1</sup>

8. Adams-Mason Houses (DC)
9. American Institute of Pharmacy (NR, DC)
10. Arlington Memorial Bridge (NR, DC)
11. Arlington Memorial Bridge - Related Features, Rock Creek & Potomac Parkway Terminus (NR, DC)
12. Arlington Memorial Bridge - Related Features, The Watergate (DC, NR)
13. Bomford Mill (Pioneer Flour Mills; Flour Mill) (DC)
14. Brickyard Hill House (DC)
15. City Tavern (NR, DC)
16. Cuban Friendship Urn (DC)
17. DC Paper Manufacturing Company (Paper Mill) (DC)
18. DC War Memorial (NR, DC)
19. Dodge Warehouses (& Adjacent Structures) (DC)
20. Duvall Foundry (DC)
21. Forrest-Marbury House (DC)

<sup>1</sup> Most of these sites are also contributing buildings to the HDs mentioned above; however to save space, they are only identified here by their individual listings.

22. Georgetown Commercial Buildings - Thomas Cramphin Buildings (DC)
23. Georgetown Commercial Buildings, 3068, 3056, 3072, 3112, 3116, 2919 M Street, N.W. & 1216, 1219, 1221, 1249 Wisconsin Avenue, NW (DC)
24. Georgetown Commercial Buildings, M Street and Wisconsin Avenue, Reckert House (DC)
25. Georgetown Commercial Buildings, Thomas Sims Corner & Houses, Ross & Getty Building (DC)
26. Georgetown Custom House and Post Office (NR, DC)
27. Georgetown Market (NR, DC)
28. Georgetown University Healy Hall/Old North (NR, NHL, DC)
29. Godey Lime Kilns (Washington Lime Kilns) (NR, DC)
30. Grace Church (NR, DC)
31. Halcyon House (Benjamin Stoddert House) (NR, DC)
32. John Lutz House (Aged Woman's Home; Female Union Benevolent Society) (DC)
33. Joseph Carleton House (DC)
34. Key Bridge (NR, DC)
35. Lincoln Memorial & Statue of Lincoln (NR, DC)
36. Loughborough-Patterson House (Junior League of Washington) (DC)
37. McCleery House (DC)
38. Mullett Rowhouses (NR, DC)
39. National Academy of Sciences (NR, DC)
40. Nicholas Hedges House and Federal Houses (DC)
41. Old Engine Company No. 5 (Bank of Columbia, Georgetown Town Hall & Mayor's Office) (DC)
42. Old Naval Observatory (National Observatory; Naval Museum of Hygiene; Naval Medical School) (NR, NHL, DC)
43. Old Stone House (NR, DC)
44. Potomac Aqueduct Bridge Abutment and Pier (DC)
45. Potomac Boat Club (NR, DC)
46. Potomac Masonic Lodge No. 5 (DC)
47. Prospect House (Lingan-Templeman House) (NR, DC)
48. Saint Mary's Episcopal Church (Saint Mary's Chapel) (NR, DC)
49. The Luzon (The Westover) (NR, DC)
50. Jefferson Memorial (NR, DC)
51. Quality Hill (NR, DC)
52. Vietnam Veterans Memorial (NR)
53. Vigilant Firehouse (NR, DC)
54. Washington Canoe Club (NR, DC)
55. Watergate (NR, DC)
56. William Knowles House (DC)
57. Wisconsin Avenue Bridge (High Street Bridge) (DC)

### DOEs and Pending Designations (Not on map)

58. Proposed Old Naval Observatory HD (pending designation)
59. Potomac Annex Historic District (DOE)
60. 2430 E Street & 2301 Constitution Avenue NW – E Street Complex (pending designation)
61. Kennedy Center (DOE)
62. West Heating Plant (DOE, Georgetown HD)

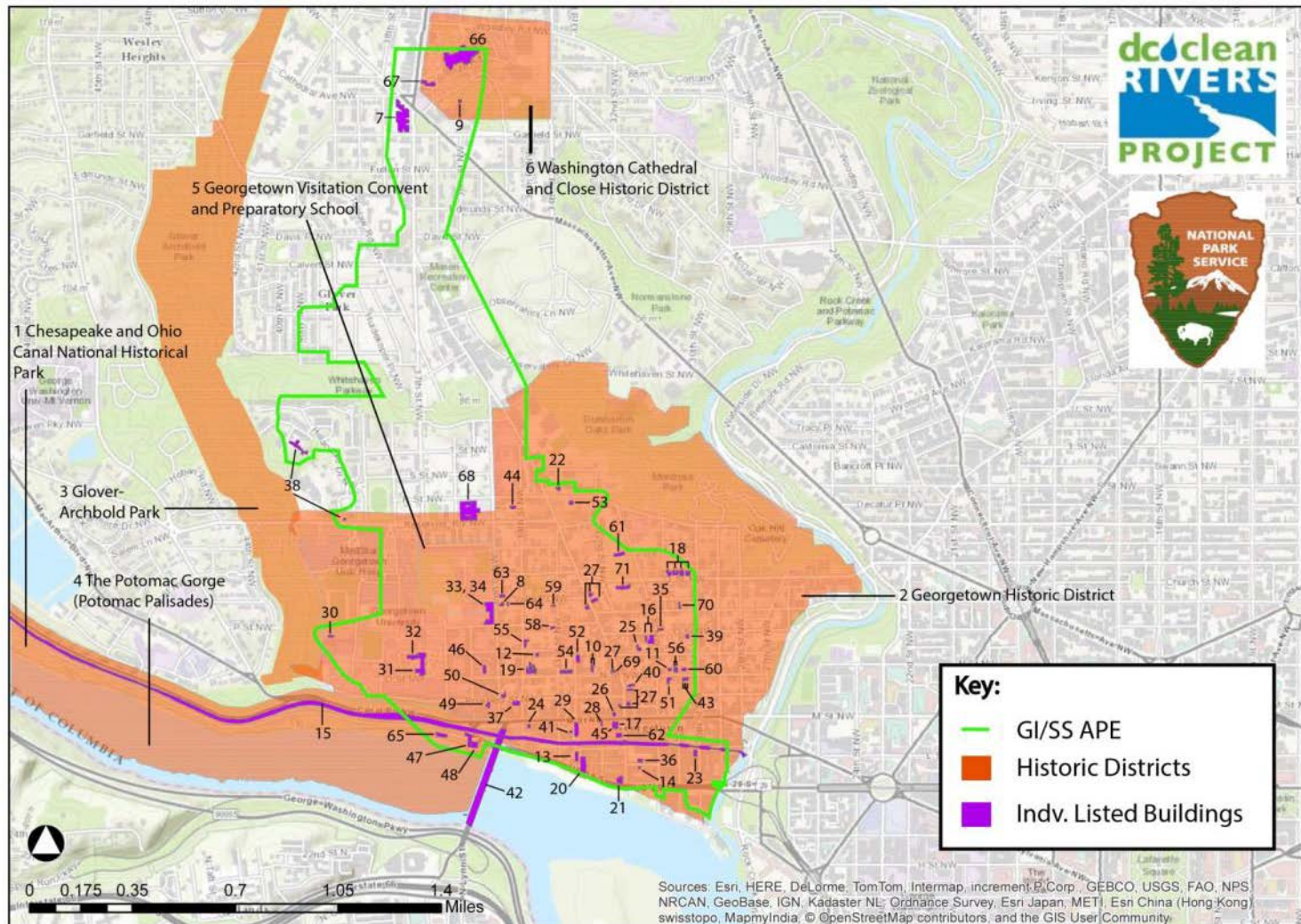
### Key:

DOE – Property has a Determination of Eligibility  
 DC – Property listed on the DC Inventory of Historic Sites  
 NR – Property listed in the National Register of Historic Places  
 NHP – Property is a National Historic Park  
 NHL – Property is a National Historic Landmark  
 NM – Property is a National Monument



# Draft Area of Potential Effect and Historic Resources Historic Resources (GI/SS APE)

## Potomac River Tunnel: Green Infrastructure (GI/SS) APE Draft



# Draft Area of Potential Effect and Historic Resources List of Historic Resources (GI/SS APE)

## Historic Districts

1. Chesapeake and Ohio Canal National Historical Park (NR, NHL, DC, NM, NHP)
2. Georgetown Historic District (NR, NHL, DC)
3. Glover-Archbold Park (NR, DC)
4. The Potomac Gorge (Potomac Palisades) (DC)
5. Georgetown Visitation and Preparatory School (NR, DC)
6. Washington Cathedral and Close Historic District (NR, DC)

## Historic Sites

7. Alban Towers (and Interiors) (NR, DC)
8. Alexander Melville Bell 4House (DC)\*
9. All Hallows Guild Traveling Carousel (NR)
10. Barber-Caperton House (& Gazebo) (DC)\*
11. Beall-Peter-Dick House (DC)\*
12. Bodisco House (Clement Smith House) (DC)\*
13. Bomford Mill (Pioneer Flour Mills; Flour Mill) (DC)\*
14. Brickyard Hill House (DC)\*
15. Chesapeake and Ohio Canal (NR, DC)\*
16. Christ Church (& Rectory) (NR, DC)\*
17. City Tavern (NR, DC)
18. Cooke's Row (DC)\*
19. Cox's Row (DC)\*
20. DC Paper Manufacturing Company (Paper Mill) (DC)\*
21. Dodge Warehouses (& Adjacent Structures) (DC)\*
22. Dougall House (DC)\*
23. Duvall Foundry (DC)\*
24. Forrest-Marbury House (DC)\*
25. Foxall-McKenney House (DC)\*
26. Georgetown Commercial Buildings - Thomas Cramphin Buildings (DC)
27. Georgetown Commercial Buildings, 2919, 3068, 3056, 3072, 3112, 3116 M Street, N.W. & 1218, 1219, 1221, 1249, 1304, 1515, 1517, 1522, 1524, 1527, 1529 Wisconsin Avenue, NW (DC)\*

28. Georgetown Commercial Buildings, M Street and Wisconsin Avenue, Reckert House (DC)
29. Georgetown Market (NR, DC)\*
30. Georgetown University, Astronomical Observatory (NR, DC)\*
31. Georgetown University Healy Hall (NR, NHL, DC)
32. Georgetown University, Old North (DC)\*
33. Georgetown Visitation Convent and Preparatory School – Chapel (DC)
34. Georgetown Visitation Convent and Preparatory School – Monastery and Academy Building (DC)\*
35. Godey House (DC)\*
36. Grace Church (NR, DC)\*
37. Halcyon House (Benjamin Stoddert House) (NR, DC)\*
38. Hillandale (Main Residence & Gatehouse) (NR, DC)
39. Isaac Tenney House (DC)\*
40. John Lutz House (Aged Woman's Home; Female Union Benevolent Society) (DC)\*
41. Joseph Carleton House (DC)\*
42. Key Bridge (NR, DC)
43. Laird-Dunlop House (DC)\*
44. Mackall-Worthington House (DC)\*
45. Old Engine Company No. 5 (Bank of Columbia, Georgetown Town Hall & Mayor's Office) (DC)\*
46. Old Holy Trinity Church (Convent of Mercy) (DC)\*
47. Potomac Aqueduct Bridge Abutment and Pier (DC)
48. Potomac Boat Club (NR, DC)\*^
49. Prospect House (Lingan-Templeman House) (NR, DC)\*
50. Quality Hill (John Thompson Mason House; Charles Worthington House) (NR, DC)\*
51. Riggs-Riley House (DC)\*
52. Saint John's Church, Georgetown (DC)\*
53. Scott-Grant House (DC)\*
54. Smith Row (DC)\*
55. Smith-Bruce House (DC)\*
56. Steven-Billings Houses (DC)\*
57. The Luzon (The Westover) (NR, DC)
58. The Yellow House (DC)\*
59. The Yellow Tavern (DC)\*
60. Thomas Beall House (Newton D. Baker House) (NR, NHL, DC)\*
61. Tudor Place (NR, NHL, DC)\*

62. Vigilant Firehouse (NR, DC)\*
63. Volta Bureau (NR, NHL, DC)\*
64. Volta Laboratory (Alexander Graham Bell Laboratory; Bell Carriage House) (DC)\*
65. Washington Canoe Club (NR, DC)\*^
66. Washington Cathedral (Cathedral Church of Saint Peter & Saint Paul & Close; National Cathedral) (DC, NR) #
67. Washington Cathedral, Saint Alban's Church, Guild Hall, Rectory & Satterlee Hall (NR, DC)65
68. Western High School (Duke Ellington School of the Arts) (NR, DC)
69. William Wilson Corcoran Store (DC)\*
70. Edward Linthicum House (DC)\*
71. Bowie-Sevier House (DC)\*

## Key:

DOE – Property has a Determination of Eligibility

DC – Property listed on the DC Inventory of Historic Sites

NR – Property listed in the National Register of Historic Places

NHP – Property is a National Historic Park

NHL – Property is a National Historic Landmark

NM – Property is a National Monument

\* Within Georgetown Historic District

^ Within Potomac Gorge (Potomac Palisades)

# Within Washington Cathedral Historic District

# POTOMAC RIVER TUNNEL NEXT STEPS

# Next Steps

---

- Finalize Alternatives
- Assess Effects
- Prepare EIS
- Define mitigation (as needed)
- Finalize EIS and Issue Record of Decision (ROD)

*Additional consulting parties meetings will be scheduled during this process*

# Next Steps

---

You may submit your comments online or by regular mail:

**Online at:** <http://parkplanning.nps.gov/PotomacRiverTunnel>

**Mail to:**

DC Clean Rivers Project,  
c/o Potomac River Tunnel EIS  
DC Water and Sewer Authority  
5000 Overlook Avenue SW,  
Washington, DC 20032

Contact Angela Essner at (202) 787-4417 or via email at [Angela.Essner@dcwater.com](mailto:Angela.Essner@dcwater.com) with any project related questions.



*Please be sure to submit your written comments  
no later than February 28, 2015.*