



EISENHOWER MEMORIAL

SECTION 106 MEETING

DECEMBER 9, 2014

DECEMBER 2011 DESIGN



AERIAL VIEW

MOA STIPULATION 10: DESIGN RESPONSE TO NCPC PRELIMINARY REVIEW

EISENHOWER MEMORIAL

Gehry Partners • AECOM Joint Venture

APPROVED PRELIMINARY DESIGN OCTOBER 2014



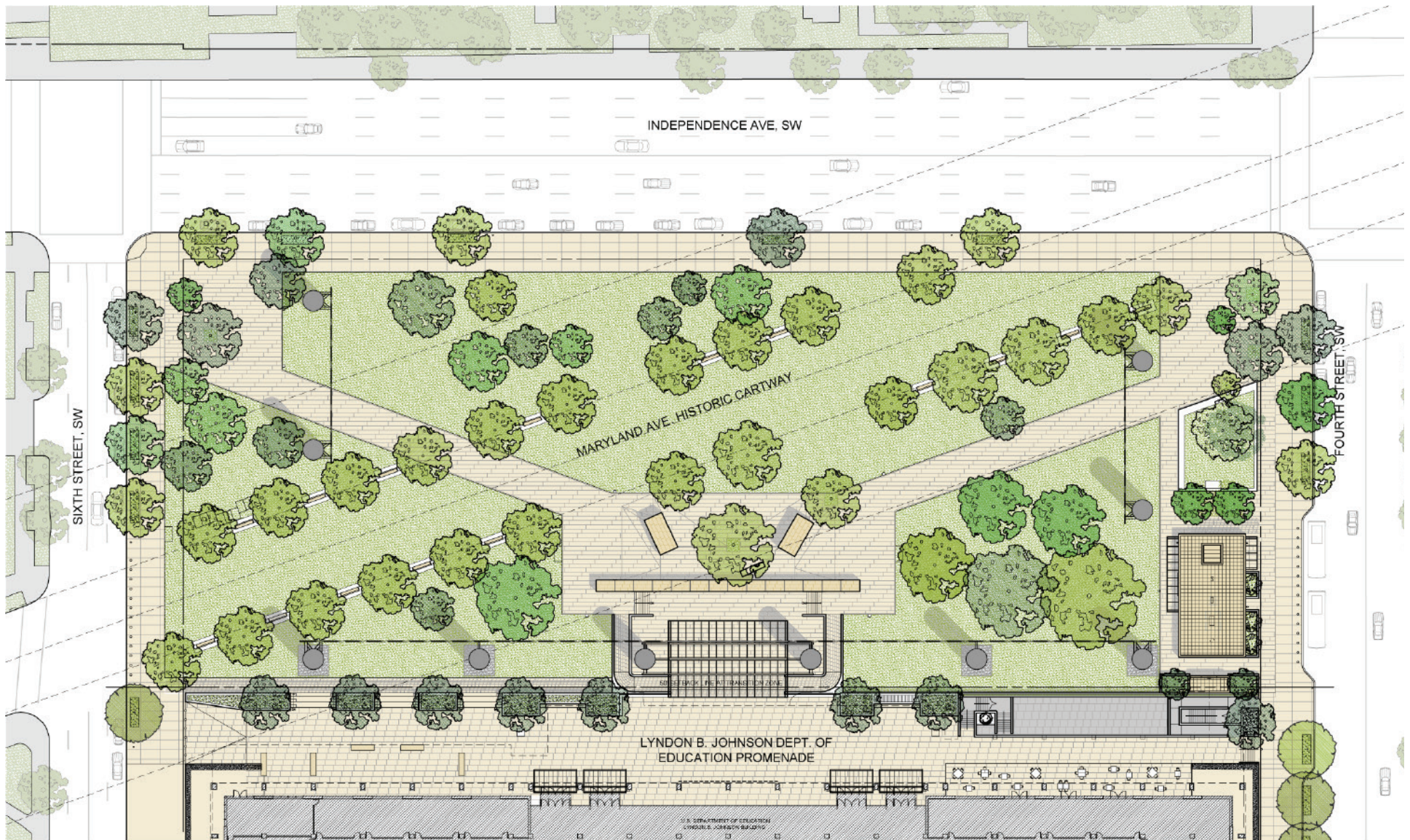
AERIAL VIEW

MOA STIPULATION 10: DESIGN RESPONSE TO NCPC PRELIMINARY REVIEW

EISENHOWER MEMORIAL

Gehry Partners • AECOM Joint Venture

DECEMBER 2011 DESIGN

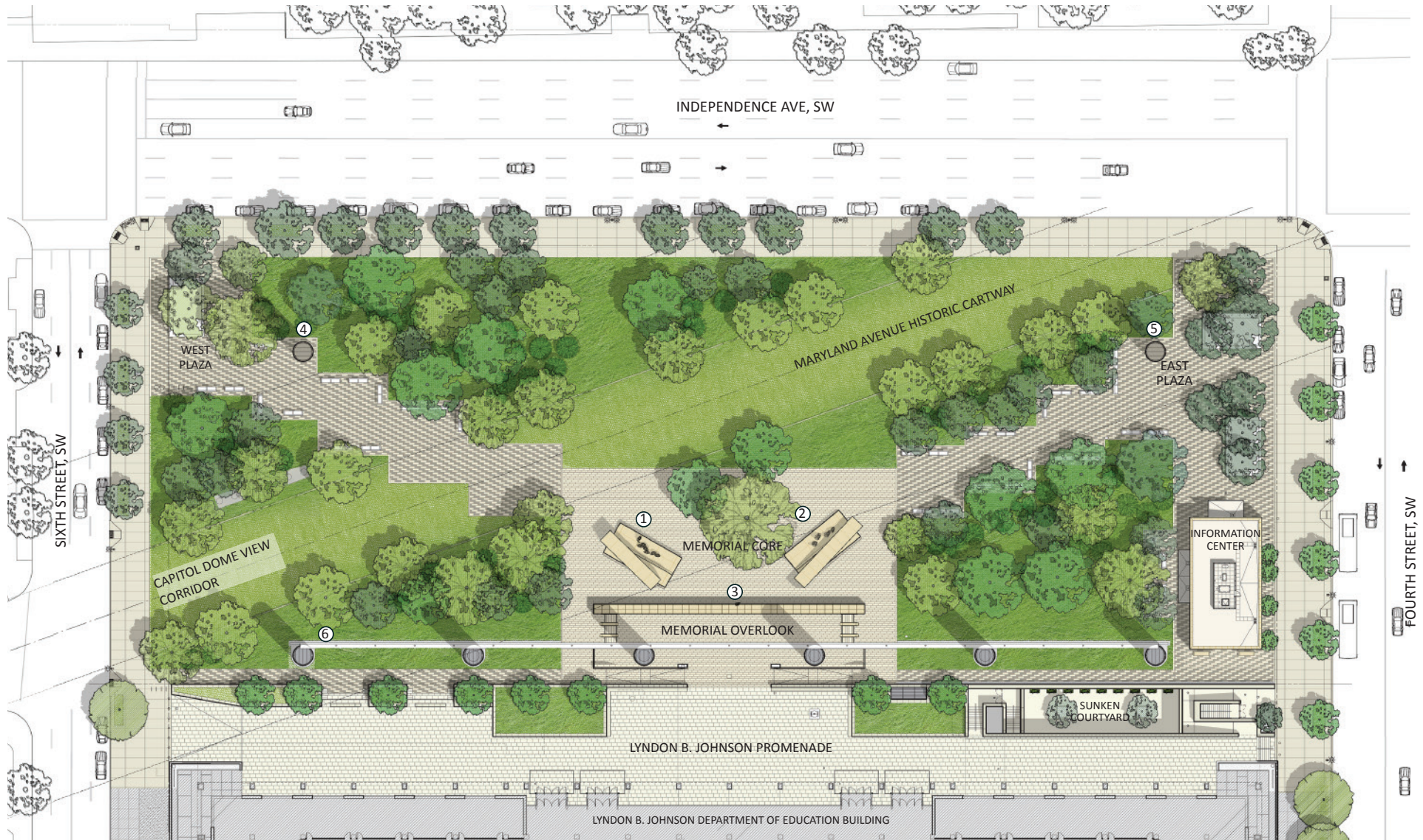


MOA STIPULATION 10: DESIGN RESPONSE TO NCPC PRELIMINARY REVIEW

EISENHOWER MEMORIAL

Gehry Partners • AECOM Joint Venture

APPROVED PRELIMINARY DESIGN OCTOBER 2014



- ① GENERAL EISENHOWER MEMORIAL ELEMENT
- ② PRESIDENT EISENHOWER MEMORIAL ELEMENT
- ③ YOUNG EISENHOWER STATUE
- ④ WEST COLUMN
- ⑤ EAST COLUMN
- ⑥ SOUTH TAPESTRY



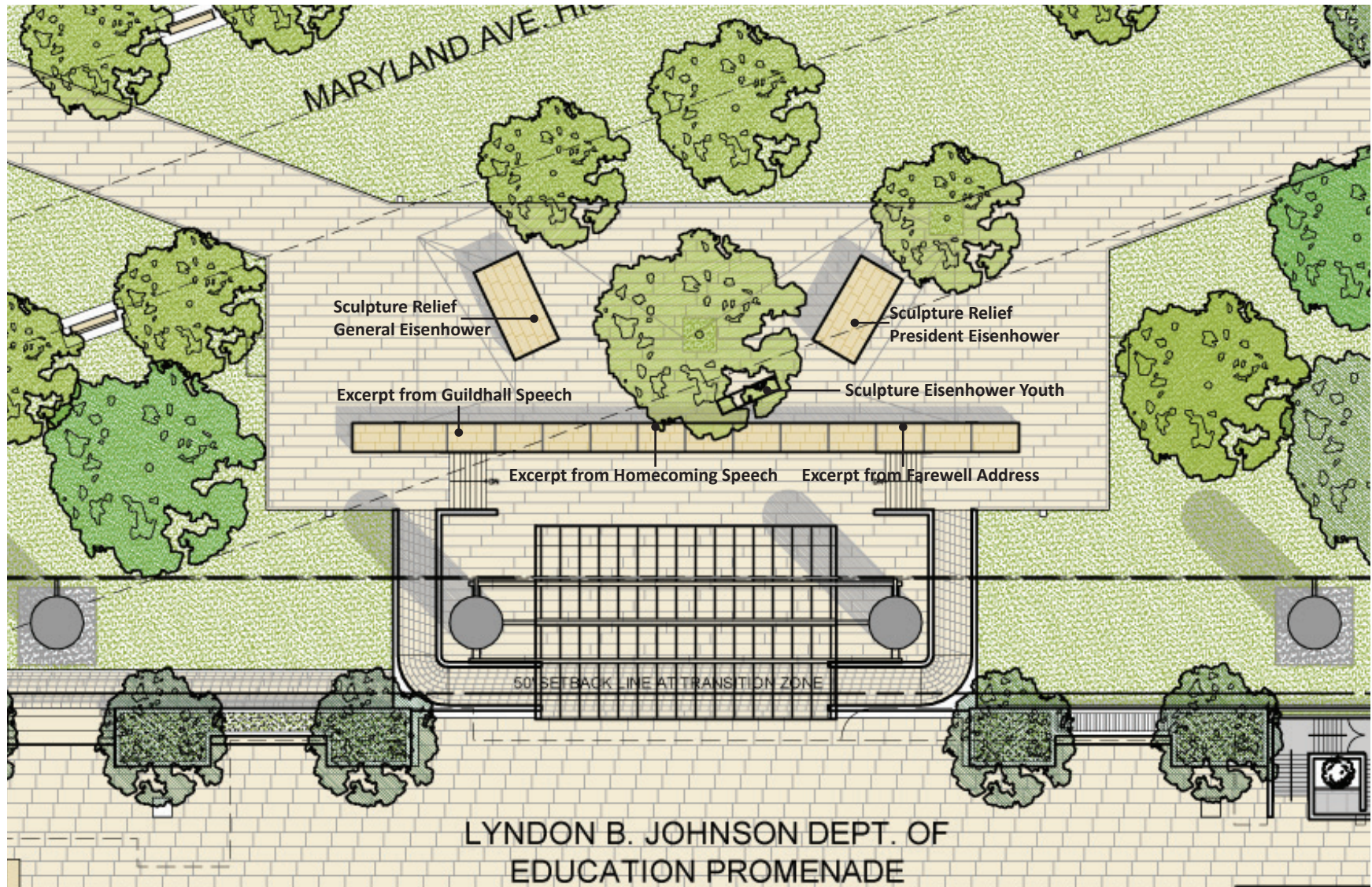
SITE PLAN

MOA STIPULATION 10: DESIGN RESPONSE TO NCPC PRELIMINARY REVIEW

EISENHOWER MEMORIAL

Gehry Partners • AECOM Joint Venture

DECEMBER 2011 DESIGN



ENLARGED MEMORIAL CORE

MOA STIPULATION 10: CENTRAL CORE ELEMENTS

EISENHOWER MEMORIAL

Gehry Partners • AECOM Joint Venture

DECEMBER 2011 DESIGN



Excerpt from
Farewell Address

Sculpture Relief
President Eisenhower

Sculpture Eisenhower
Youth

Excerpt from
Homecoming
Speech

Sculpture Relief
General Eisenhower

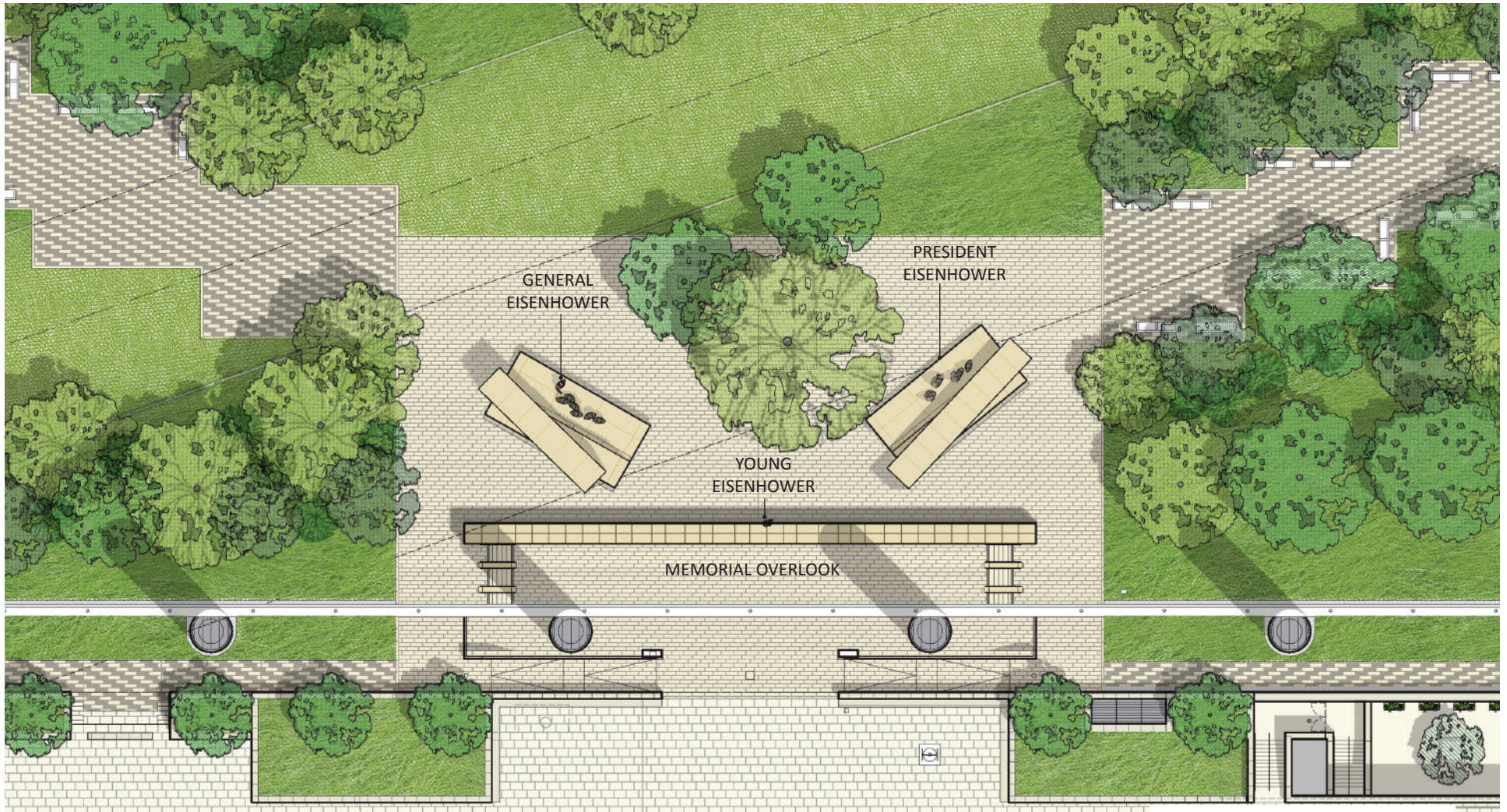
Excerpt from
Guildhall Speech

MOA STIPULATION 10: CENTRAL CORE ELEMENTS

EISENHOWER MEMORIAL

Gehry Partners • AECOM Joint Venture

APPROVED PRELIMINARY DESIGN OCTOBER 2014



MEMORIAL CORE PLAN

SUMMARY OF REVISIONS TO MEMORIAL CORE

1. Memorial core elements have been reconfigured to be more open to the approach paths.
2. Massing of Memorial core elements has been revised and a lintel has been added.
3. The Memorial elements have been revised to include free-standing bronze statues in front of bas reliefs.
4. The inscription on the Memorial Overlook wall has been replaced with the text: Dwight D. Eisenhower
5. Inscriptions of the selected speeches were relocated to the rear facade of the memorial elements.
6. Young Eisenhower sculpture is seated on the Overlook wall.



MOA STIPULATION 10: CENTRAL CORE ELEMENTS

EISENHOWER MEMORIAL

Gehry Partners • AECOM Joint Venture

APPROVED PRELIMINARY DESIGN OCTOBER 2014



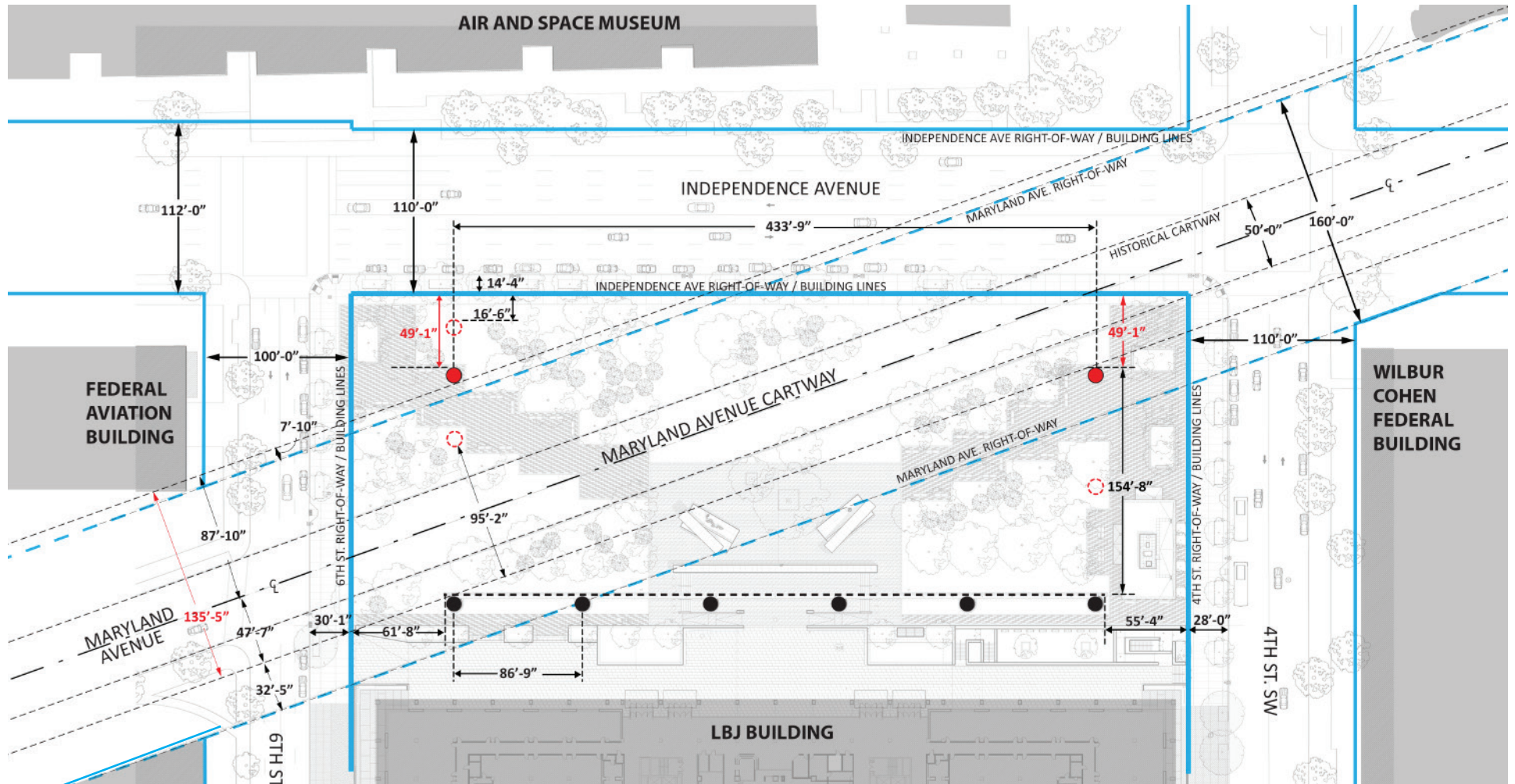
VIEW TOWARDS THE MEMORIAL FROM MARYLAND AVENUE

MOA STIPULATION 10: CENTRAL CORE ELEMENTS

EISENHOWER MEMORIAL

Gehry Partners • AECOM Joint Venture

APPROVED PRELIMINARY DESIGN OCTOBER 2014



PLAN-DIAGRAM

KEY:

- RIGHTS-OF-WAYS
- ORIGINAL LOCATION OF COLUMNS
- REVISED COLUMN LOCATIONS
- COLUMN LOCATIONS

SUMMARY OF DESIGN REVISIONS IN RESPONSE TO NCPC APRIL 3, 2014 PRELIMINARY REVIEW

- The design revisions eliminate the East and West tapestries, allowing the influence of the adjacent buildings to define and unify the site with the precinct.
- The northern singular columns are located fully within the planes of the adjacent building facades.
- The design revisions widen the Maryland Avenue viewshed from 95' to 135' wide creating a proportionally *horizontal* framed view towards the Capitol building.
- Original concept included four columns that were within the 160' ROW. The revised plan includes only two columns and one partial column within the southern edge of 160' ROW.

MOA STIPULATION 10: DESIGN REVISIONS IN RESPONSE TO PRELIMINARY REVIEW

EISENHOWER MEMORIAL

Gehry Partners • AECOM Joint Venture

APPROVED PRELIMINARY DESIGN OCTOBER 2014



AERIAL VIEW TOWARDS SOUTHWEST

MOA STIPULATION 10: DESIGN REVISIONS IN RESPONSE TO NCPC PRELIMINARY REVIEW

EISENHOWER MEMORIAL

Gehry Partners • AECOM Joint Venture

DECEMBER 2011 DESIGN



VIEW ALONG MARYLAND AVENUE TOWARDS CAPITOL

APPROVED PRELIMINARY DESIGN OCTOBER 2014



VIEW ALONG MARYLAND AVENUE TOWARDS CAPITOL - The design revisions widen the Maryland Avenue viewshed from 95' to 135' wide, creating a proportionally *horizontal* frame to the Capitol building.

MOA STIPULATION 10: DESIGN REVISIONS IN RESPONSE TO NCPC PRELIMINARY REVIEW

EISENHOWER MEMORIAL

Gehry Partners • AECOM Joint Venture

APPROVED PRELIMINARY DESIGN OCTOBER 2014



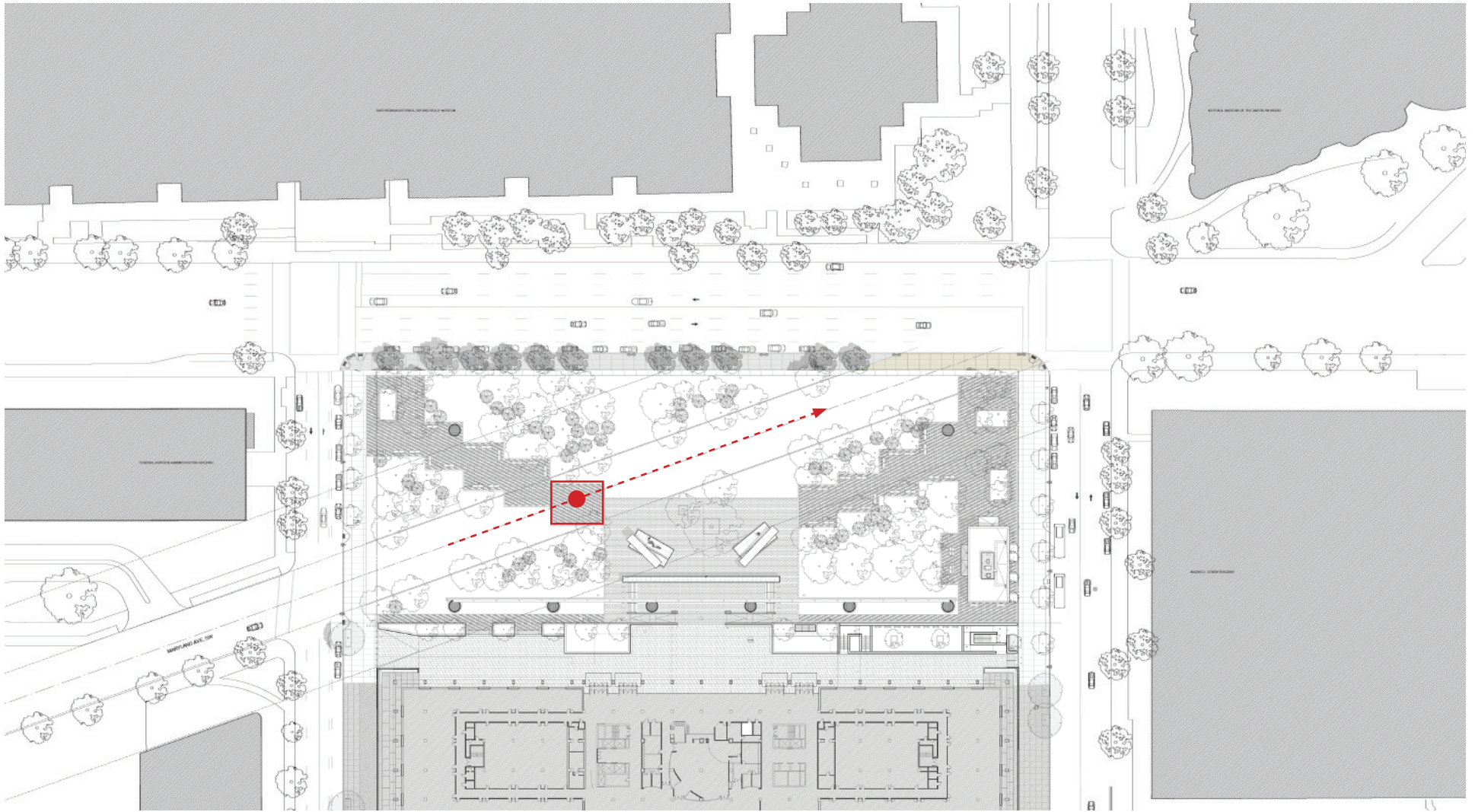
VIEW ALONG MARYLAND AVENUE TOWARDS CAPITOL

MOA STIPULATION 10: DESIGN REVISIONS IN RESPONSE TO NCPC PRELIMINARY REVIEW

EISENHOWER MEMORIAL

Gehry Partners • AECOM Joint Venture

APPROVED PRELIMINARY DESIGN OCTOBER 2014



MARYLAND AVENUE VIEW FROM WALKWAY

MOA STIPULATION 10: REFINEMENT TO WALKWAYS

EISENHOWER MEMORIAL

Gehry Partners • AECOM Joint Venture

APPROVED PRELIMINARY DESIGN OCTOBER 2014



GROUNDPLANE PLANTING

KEY:



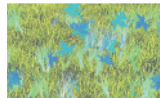
TURF TYPE 1



TURF TYPE 2



MEMORIAL
PLANTERS



PROMENADE
PLANTERS



GRANITE
MOW STRIP

MOA STIPULATION 1: MARYLAND AVENUE CARTWAY

EISENHOWER MEMORIAL

Gehry Partners • AECOM Joint Venture



NATIONAL MALL EXAMPLE OF GROOMED LAWN AND GRANITE CURB



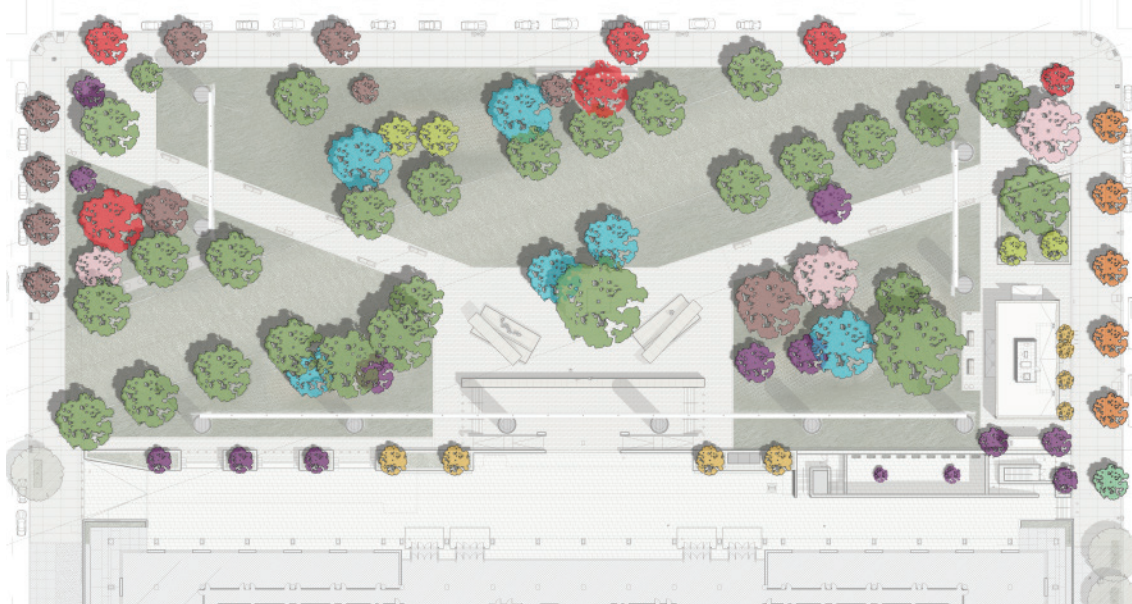
EXAMPLE OF GROOMED LAWN AND HIGHER TURF GRASSES

MOA STIPULATION 1: MARYLAND AVENUE CARTWAY

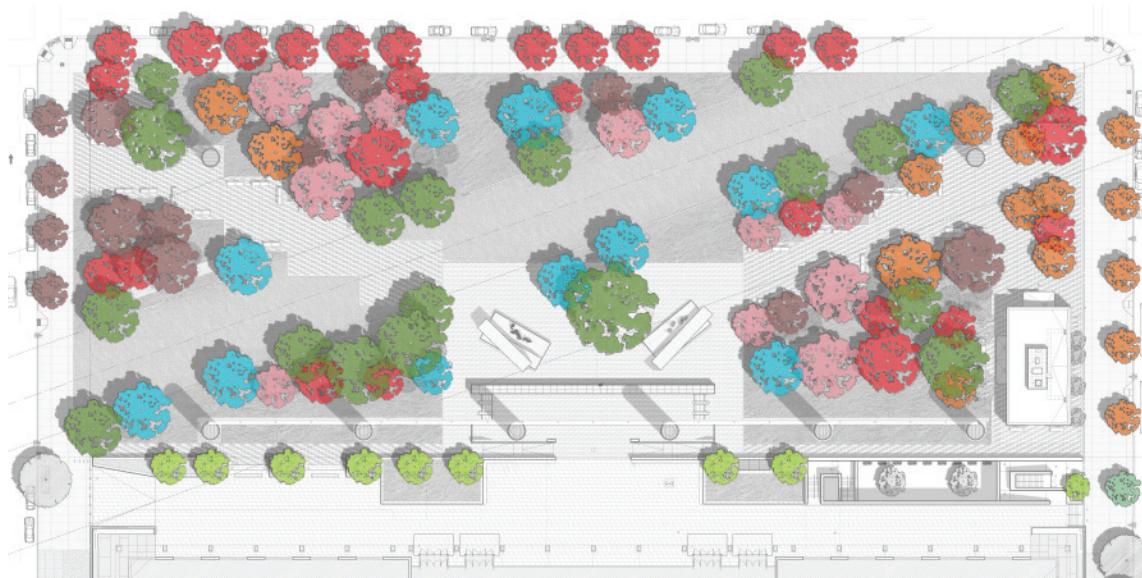
EISENHOWER MEMORIAL

Gehry Partners • AECOM Joint Venture

SHADE CANOPY TREES COMPARISON



DECEMBER 2011 - TREE SPECIES PLAN



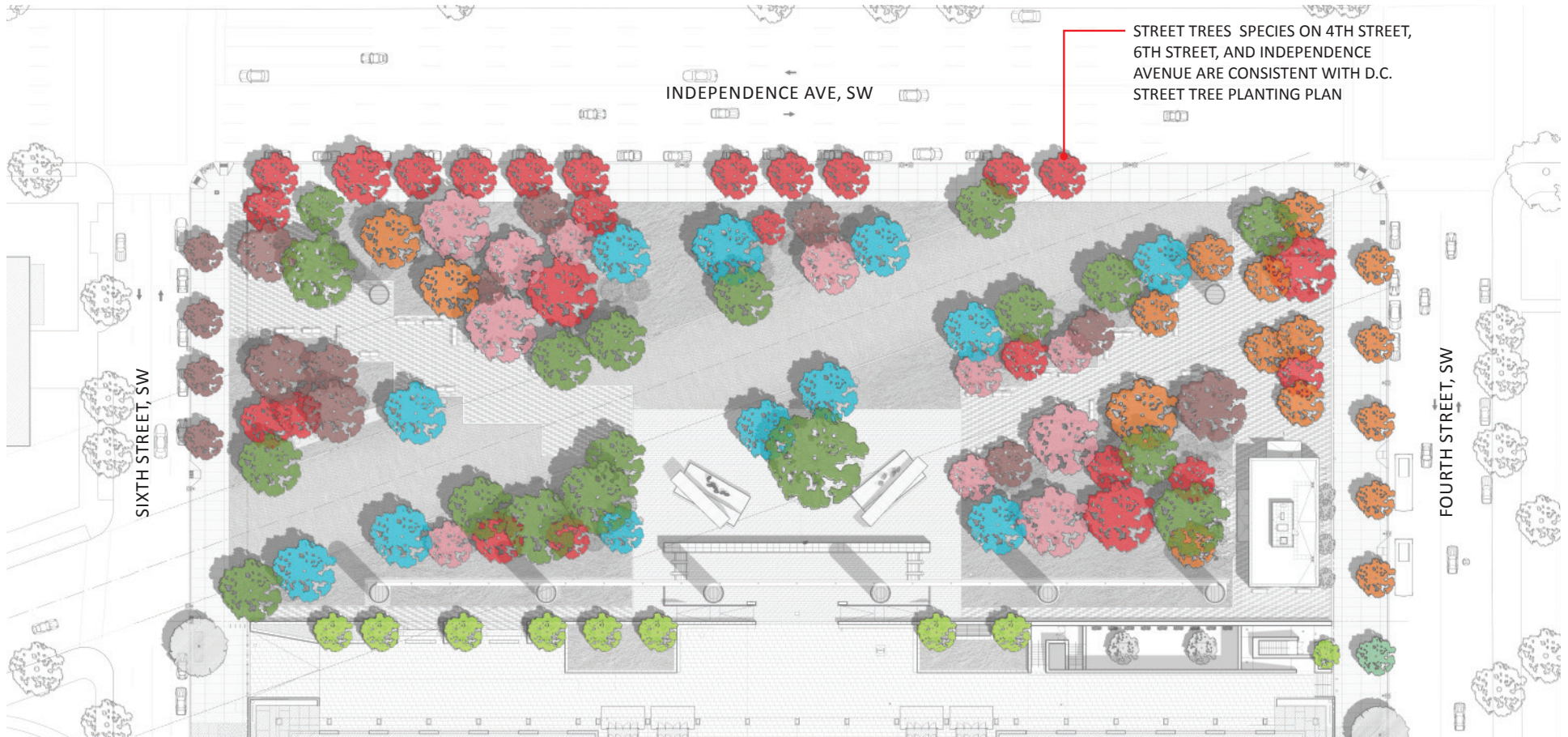
APPROVED PRELIMINARY DESIGN OCTOBER 2014 - TREE SPECIES PLAN

MOA STIPULATION 10: FURTHER LANDSCAPE DEVELOPMENTS

EISENHOWER MEMORIAL

Gehry Partners • AECOM Joint Venture

APPROVED PRELIMINARY DESIGN OCTOBER 2014



CANOPY TREES



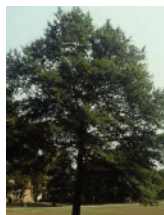
KEY:



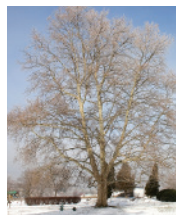
Red Oak
Quercus rubra



Swamp White Oak
Quercus bicolor



Shingle Oak
Quercus imbricaria



London Plane
Platanus x acerifolia



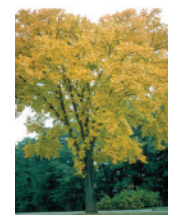
Bur Oak
Quercus macrocarpa



Hackberry
Celtis occidentalis



Willow Oak
Quercus phellos



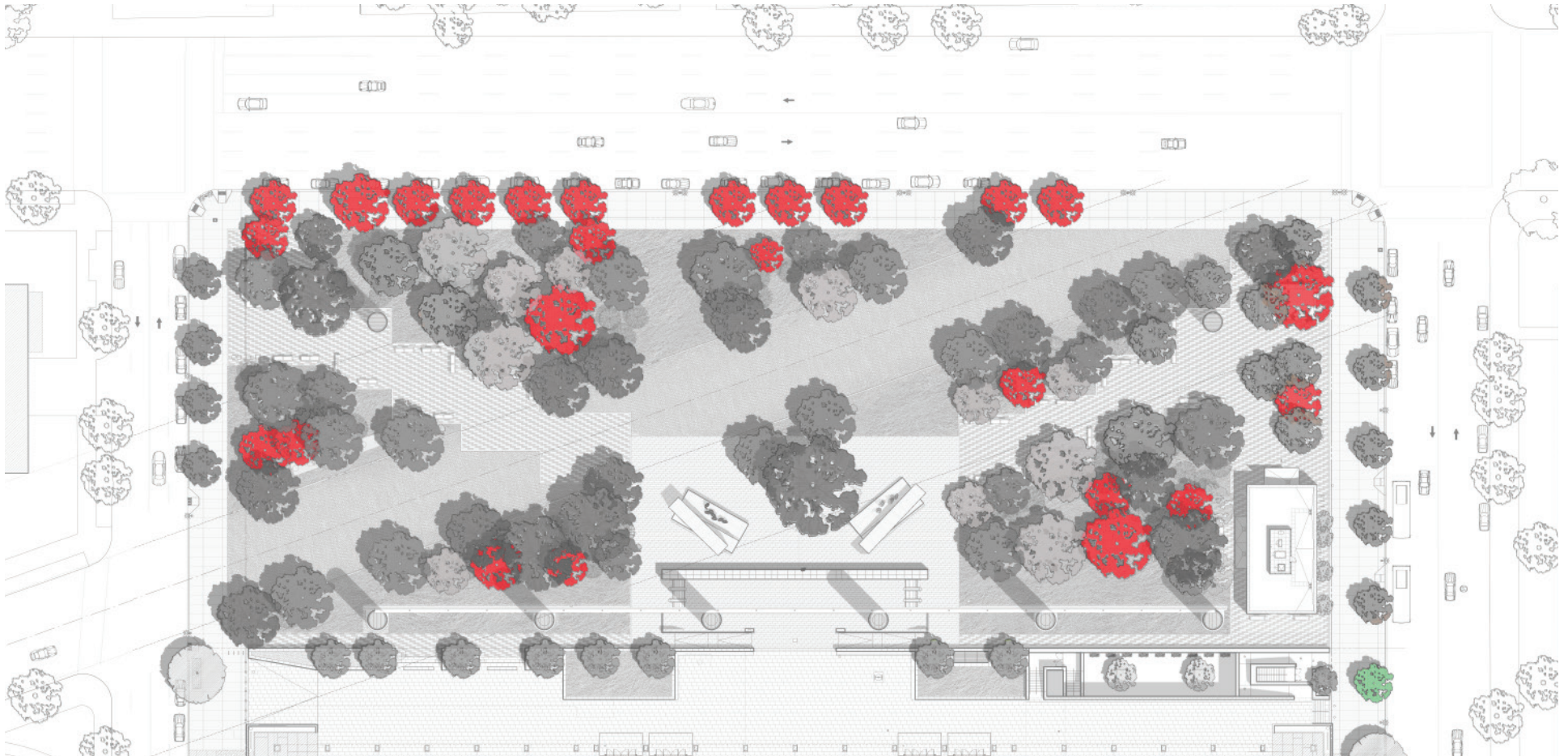
American Elm
Ulmus americana
'Valley Forge'

MOA STIPULATION 10: FURTHER LANDSCAPE DEVELOPMENTS

EISENHOWER MEMORIAL

Gehry Partners • AECOM Joint Venture

APPROVED PRELIMINARY DESIGN OCTOBER 2014



CANOPY TREE SPECIES FROM ORIGINAL LBJ PLAZA LANDSCAPE SPECIES PALETTE



Red Oak
Quercus rubra



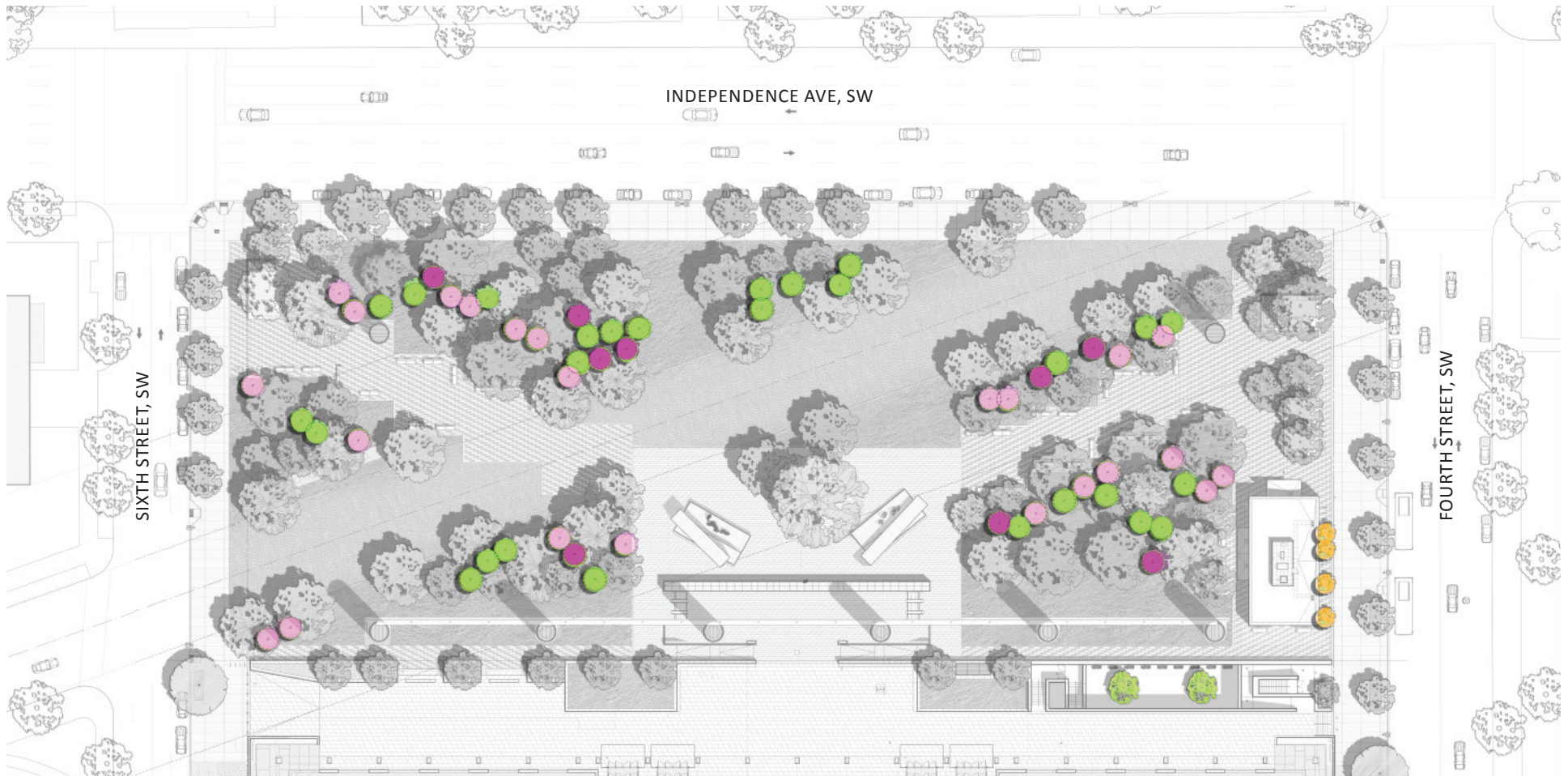
Willow Oak
Quercus phellos

MOA STIPULATION 2: TREE SPECIES FROM ORIGINAL LBJ BUILDING PLAZA PALETTE

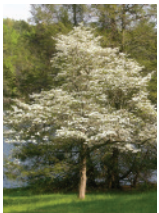
EISENHOWER MEMORIAL

Gehry Partners • AECOM Joint Venture

APPROVED PRELIMINARY DESIGN OCTOBER 2014



KEY: UNDERSTORY TREES



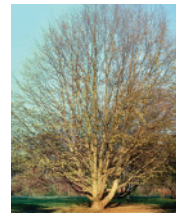
Flowering Dogwood
Cornus florida CV



Ironwood
Carpinus caroliniana



Eastern Redbud
Cercis canadensis



American Hophornbeam
Ostrya virginiana



Allegheny Serviceberry
Amelanchier laevis



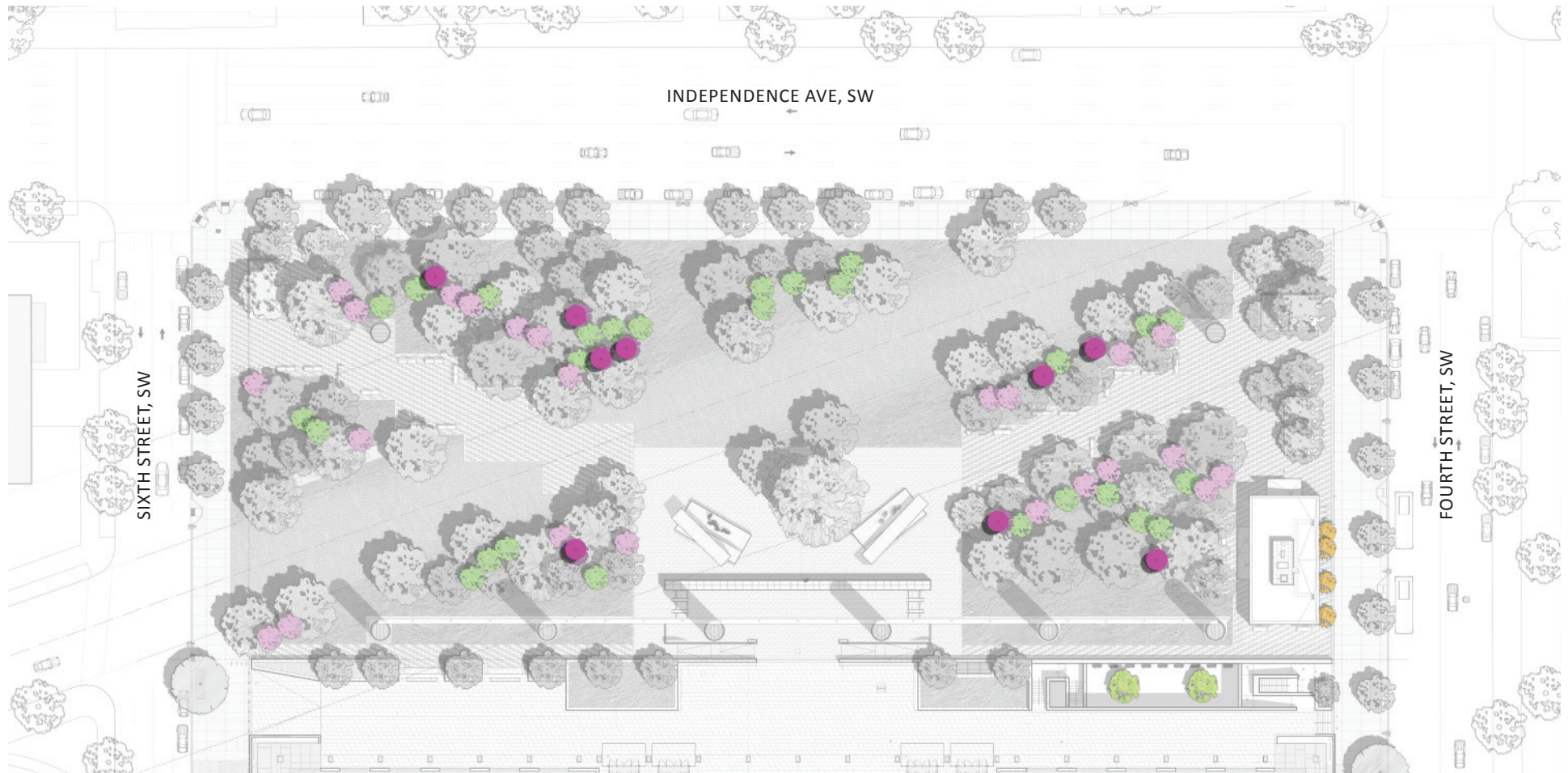
SITE PLAN

MOA STIPULATION 10: FURTHER LANDSCAPE DEVELOPMENTS

EISENHOWER MEMORIAL

Gehry Partners • AECOM Joint Venture

APPROVED PRELIMINARY DESIGN OCTOBER 2014



UNDERSTORY TREE SPECIES FROM ORIGINAL LBJ PLAZA LANDSCAPE SPECIES PALETTE



Ironwood
Carpinus caroliniana

MOA STIPULATION 2: TREE SPECIES FROM ORIGINAL LBJ BUILDING PLAZA PALETTE

EISENHOWER MEMORIAL

Gehry Partners • AECOM Joint Venture

APPROVED PRELIMINARY DESIGN OCTOBER 2014



MEMORIAL ENTRANCE PLAZA AT 4TH STREET & INDEPENDENCE AVENUE

MOA STIPULATION 10: DESIGN REVISIONS IN RESPONSE TO NCPC PRELIMINARY REVIEW AND FURTHER LANDSCAPE DEVELOPMENT

EISENHOWER MEMORIAL

Gehry Partners • AECOM Joint Venture

APPROVED PRELIMINARY DESIGN OCTOBER 2014



VIEW TOWARDS MEMORIAL LOOKING WEST

MOA STIPULATION 10: DESIGN REVISIONS IN RESPONSE TO NCPC PRELIMINARY REVIEW AND FURTHER LANDSCAPE DEVELOPMENT

EISENHOWER MEMORIAL

Gehry Partners • AECOM Joint Venture

APPROVED PRELIMINARY DESIGN OCTOBER 2014



VIEW TOWARDS EAST COLUMN FROM THE MEMORIAL CORE

MOA STIPULATION 10: DESIGN REVISIONS IN RESPONSE TO NCPC PRELIMINARY REVIEW AND FURTHER LANDSCAPE DEVELOPMENT

EISENHOWER MEMORIAL

Gehry Partners • AECOM Joint Venture

APPROVED PRELIMINARY DESIGN OCTOBER 2014



VIEW TOWARDS EAST COLUMN THROUGH MEMORIAL WALKWAY

MOA STIPULATION 10: DESIGN REVISIONS IN RESPONSE TO NCPC PRELIMINARY REVIEW AND FURTHER LANDSCAPE DEVELOPMENT

EISENHOWER MEMORIAL

Gehry Partners • AECOM Joint Venture

APPROVED PRELIMINARY DESIGN OCTOBER 2014



VIEW SOUTH TOWARDS MEMORIAL CORE FROM INDEPENDENCE AVENUE

MOA STIPULATION 10: CENTRAL MEMORIAL CORE AND FURTHER LANDSCAPE DEVELOPMENT

EISENHOWER MEMORIAL

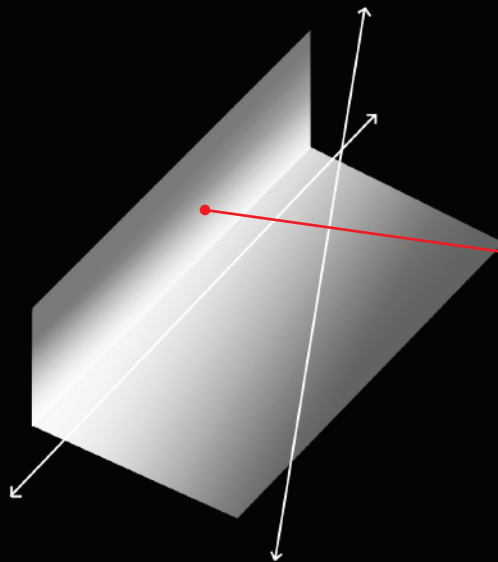
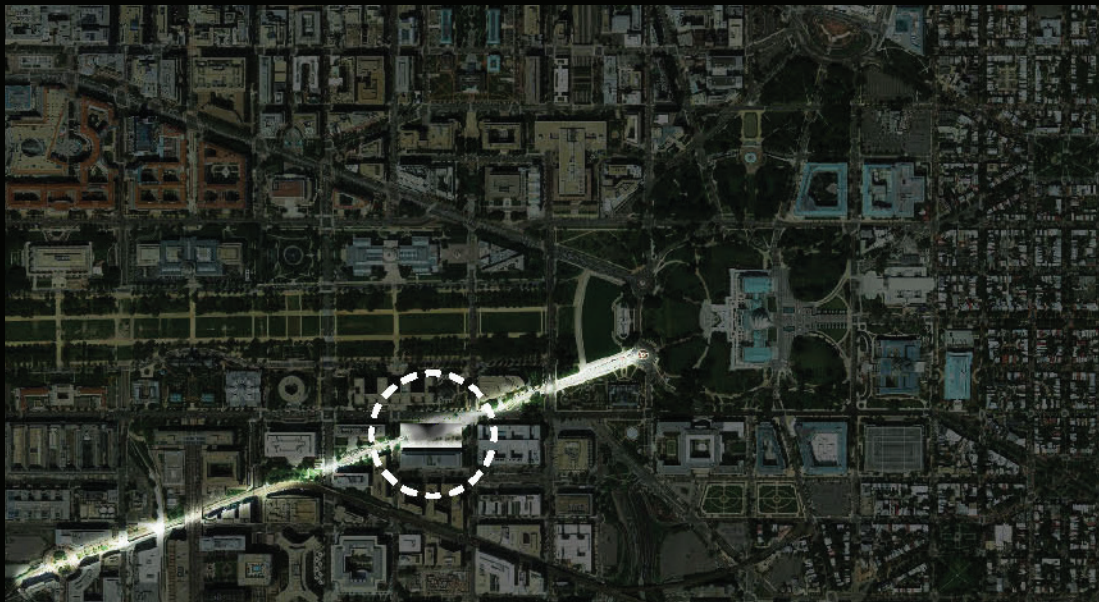
Gehry Partners • AECOM Joint Venture



MOA STIPULATION 3: NIGHT LIGHTING

EISENHOWER MEMORIAL

Gehry Partners • AECOM Joint Venture



THE MEMORIAL USES THE TAPESTRY, MEMORIAL ELEMENTS, AND THE HORIZONTAL LANDSCAPE PLANE AS ITS BINDING LIGHTING ELEMENTS.



TAPESTRY MOCK-UP
ILLUMINATED AT NIGHT

MOA STIPULATION 3: NIGHT LIGHTING

EISENHOWER MEMORIAL

Gehry Partners • AECOM Joint Venture

APPROVED PRELIMINARY DESIGN OCTOBER 2014



VIEW OF MEMORIAL AT NIGHT

MOA STIPULATION 3: NIGHT LIGHTING

EISENHOWER MEMORIAL

Gehry Partners • AECOM Joint Venture

APPROVED PRELIMINARY DESIGN OCTOBER 20144



MARYLAND AVENUE AT NIGHT

MOA STIPULATION 3: NIGHT LIGHTING

EISENHOWER MEMORIAL

Gehry Partners • AECOM Joint Venture

APPROVED PRELIMINARY DESIGN OCTOBER 2014



NIGHT VIEW OF MARYLAND AVENUE VIEWSHED TOWARDS CAPITOL

MOA STIPULATION 3: NIGHT LIGHTING

EISENHOWER MEMORIAL

Gehry Partners • AECOM Joint Venture

APPROVED PRELIMINARY DESIGN OCTOBER 2014



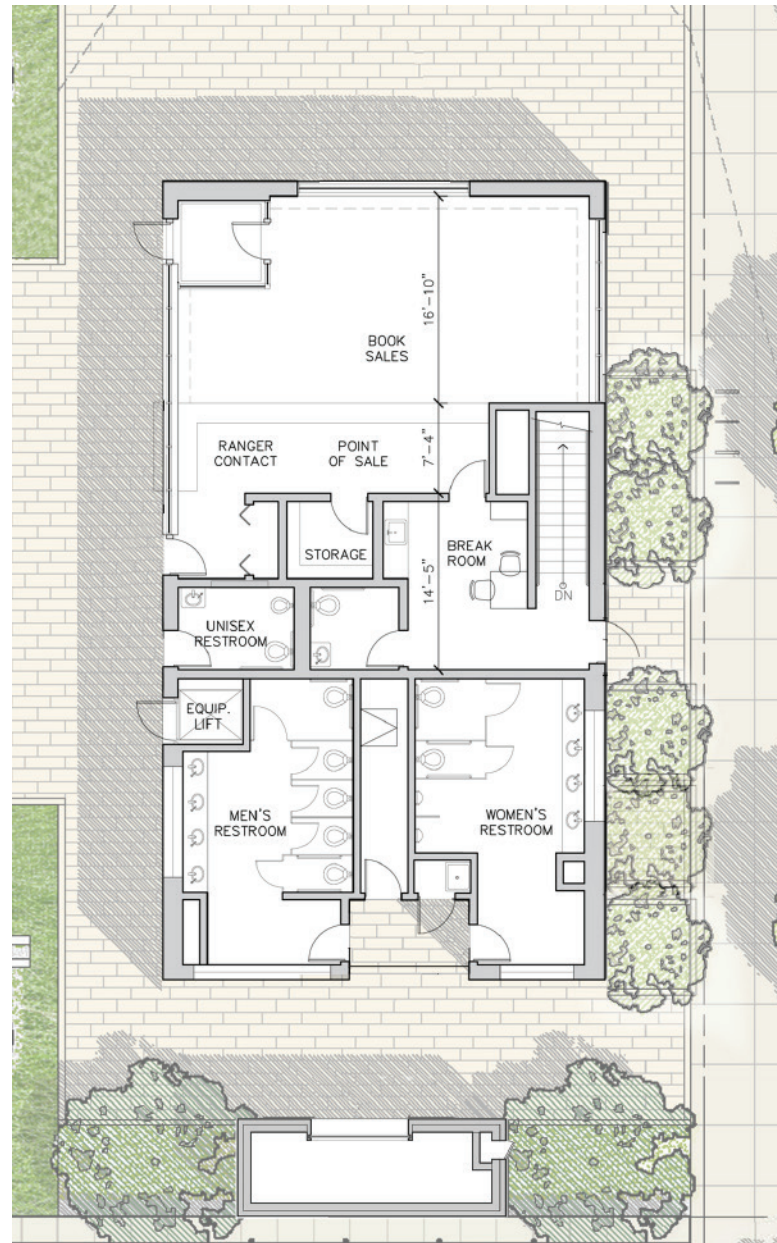
VIEW OF WESTERN SECTION OF LBJ PROMENADE (LOOKING SOUTHEAST)

MOA STIPULATION 10: LYNDON B. JOHNSON PROMENADE

EISENHOWER MEMORIAL

Gehry Partners • AECOM Joint Venture

DECEMBER 2011 DESIGN

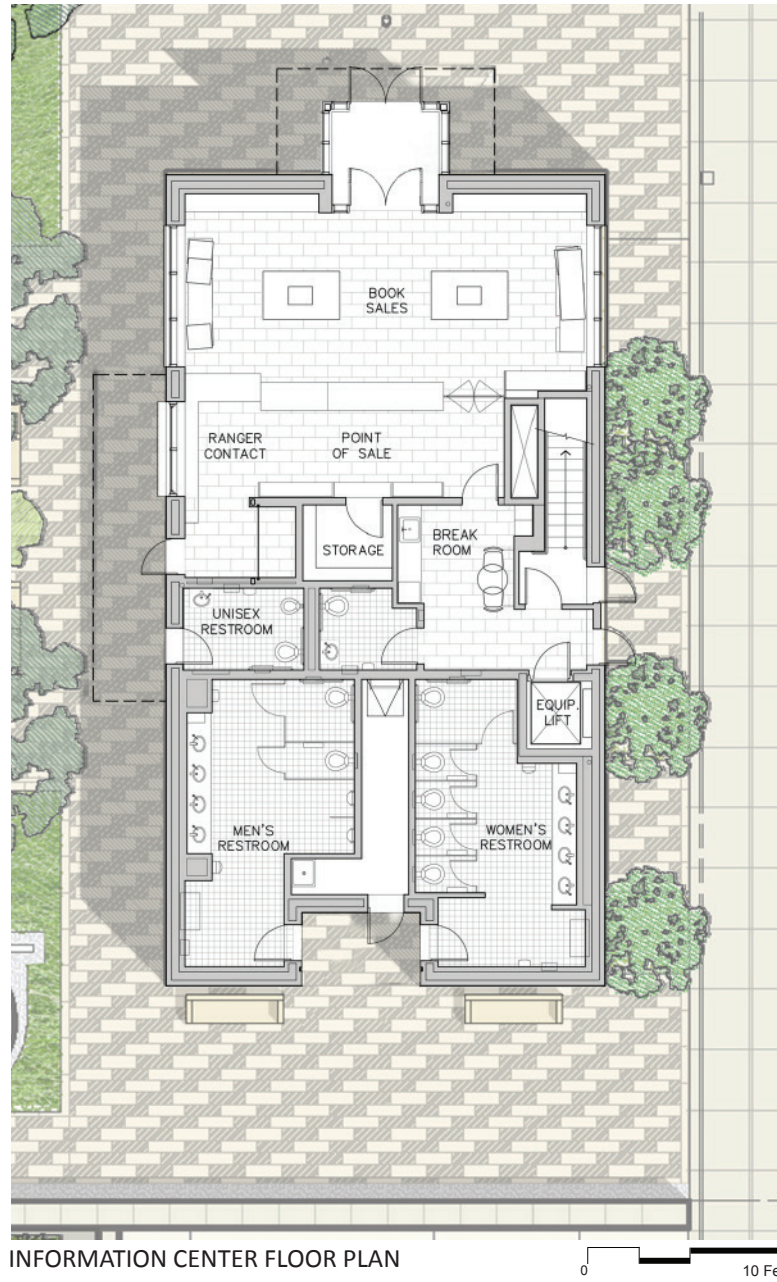


MOA STIPULATION 10: SUPPORT BUILDING FOR RANGER CONTACT STATION AND INTERPRETIVE SALES

EISENHOWER MEMORIAL

Gehry Partners • AECOM Joint Venture

APPROVED PRELIMINARY DESIGN OCTOBER 2014



SUMMARY OF REVISIONS TO SUPPORT BUILDING

- Separate Storage Building has been removed
- Entry Vestibule was added
- Exterior Canopies have been revised
- Increased seating areas around building.

MOA STIPULATION 10: SUPPORT BUILDING FOR RANGER CONTACT STATION AND INTERPRETIVE SALES

EISENHOWER MEMORIAL

Gehry Partners • AECOM Joint Venture

APPROVED PRELIMINARY DESIGN OCTOBER 2014



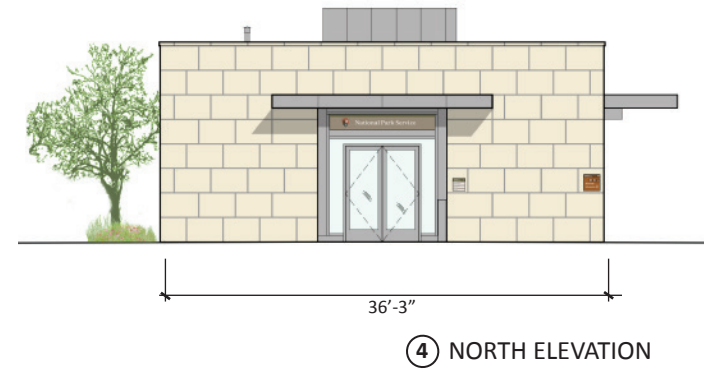
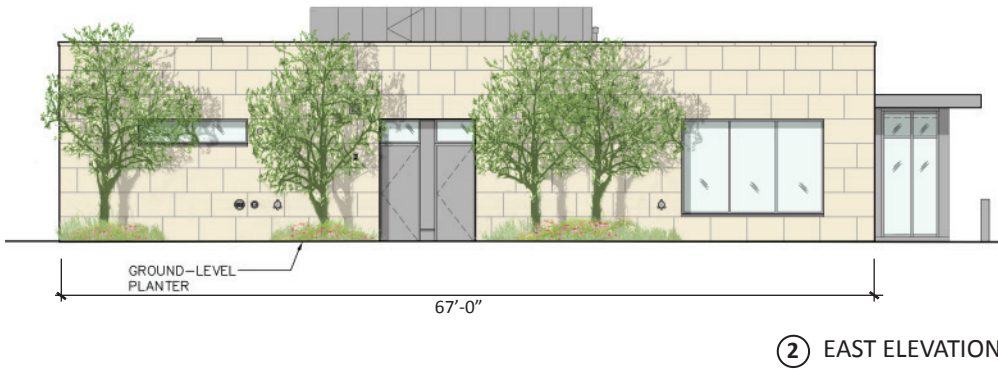
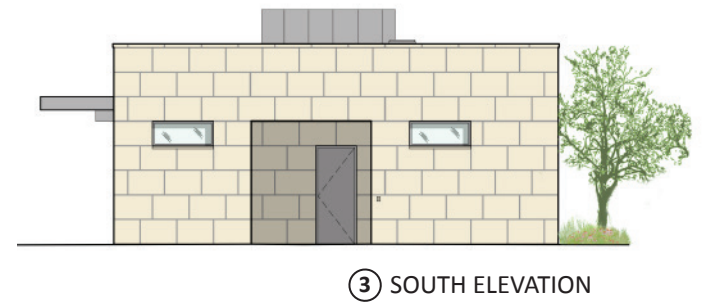
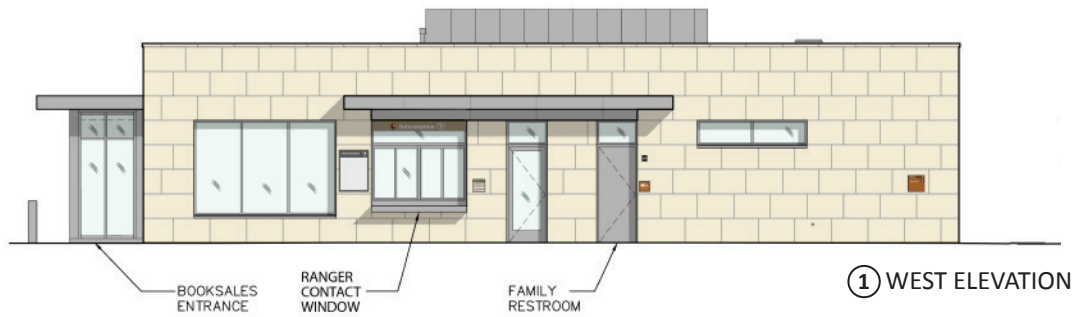
MODEL PHOTOGRAPH - WEST ELEVATION

MOA STIPULATION 10: SUPPORT BUILDING FOR RANGER CONTACT STATION AND INTERPRETIVE SALES

EISENHOWER MEMORIAL

Gehry Partners • AECOM Joint Venture

APPROVED PRELIMINARY DESIGN OCTOBER 2014



MOA STIPULATION 10: SUPPORT BUILDING FOR RANGER CONTACT STATION AND INTERPRETIVE SALES

EISENHOWER MEMORIAL

Gehry Partners • AECOM Joint Venture

SUMMARY OF DESIGN RESPONSES FROM DECEMBER 2011 TO APPROVED PRELIMINARY DESIGN OCTOBER 2014

NCPC DESIGN RESPONSES:

1. The east and west tapestries have been removed and replaced with a single columns.
2. Two northern columns are fully within planes of the adjacent building facades.
3. The revised design widens the Maryland Avenue viewshed from 95'-2" to 135'-5".
4. LBJ Perimeter security has been revised to reduce the need for bollards.

CENTRAL CORE ELEMENTS:

1. Memorial core elements have been reconfigured in plan to be more open to the approach paths.
2. Massing of Memorial core elements has been revised and a lintel has been added.
3. The Memorial elements were revised to include free-standing bronze statues in front of bas reliefs.
4. The inscription on the Memorial Overlook wall has been revised to: Dwight D. Eisenhower
5. Inscriptions of the selected speeches were relocated to the rear facade of the memorial elements.

LANDSCAPE:

1. Street trees have increased and species revised to comply with D.C. tree planting plan.
2. Tree selections incorporate 3 species that were part of the original LBJ plaza plant palette.
3. Proposed bus turnout on 4th street has been removed.
4. Diagonal walkways have been reconfigured to incorporate smaller gathering spaces.
5. 87 additional trees have been added to the site plan, including understory trees.

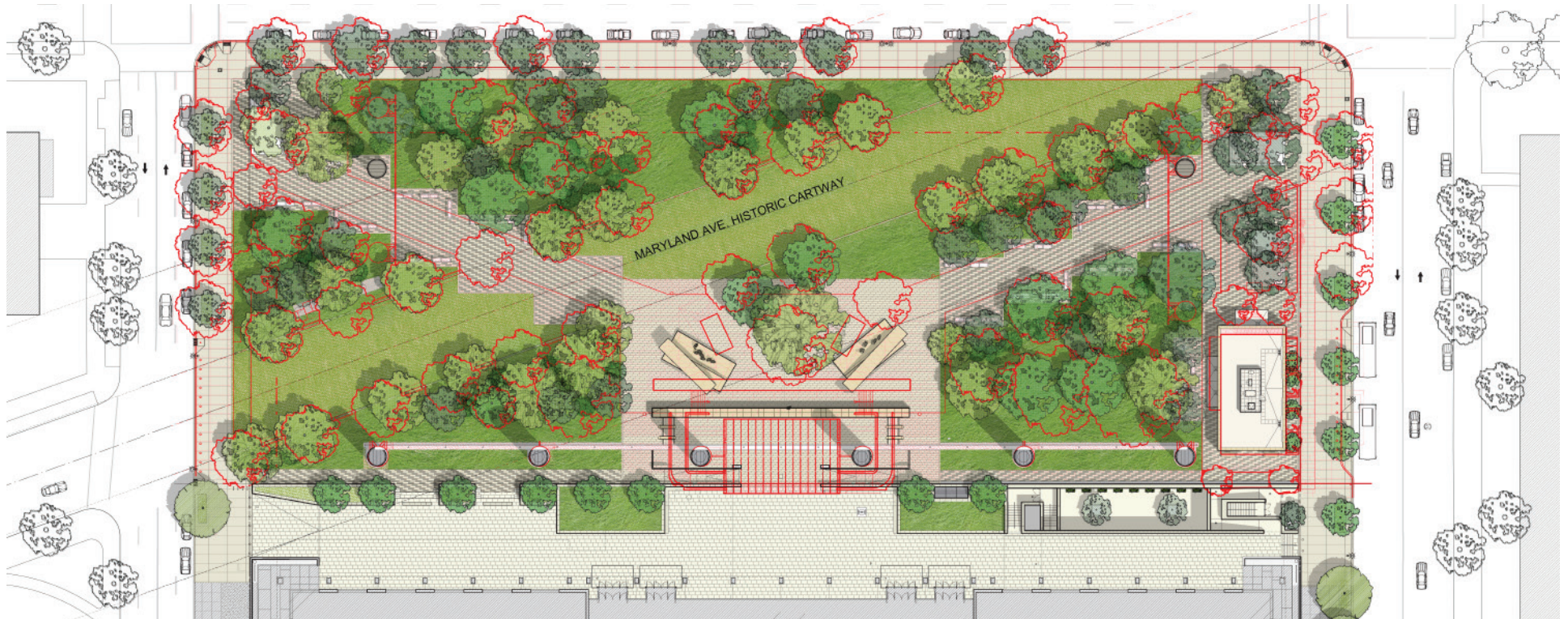
LIGHTING: A night lighting design has been incorporated into the overall design

SUPPORT BUILDING:

1. The separate storage building has been removed.
2. Visitor seating areas have been increased.
3. An entrance vestibule has been added to the North facade.
4. Canopies have been revised.

LBJ PROMENADE:

1. The Memorial Overlook canopy has been removed.
2. The Overlook stair and ramp approach to the LBJ building have been revised.
3. Planter sizes have increased.
4. The central gathering area has been reshaped and includes bench seating.
5. Terraced seating on the west end has been reconfigured.



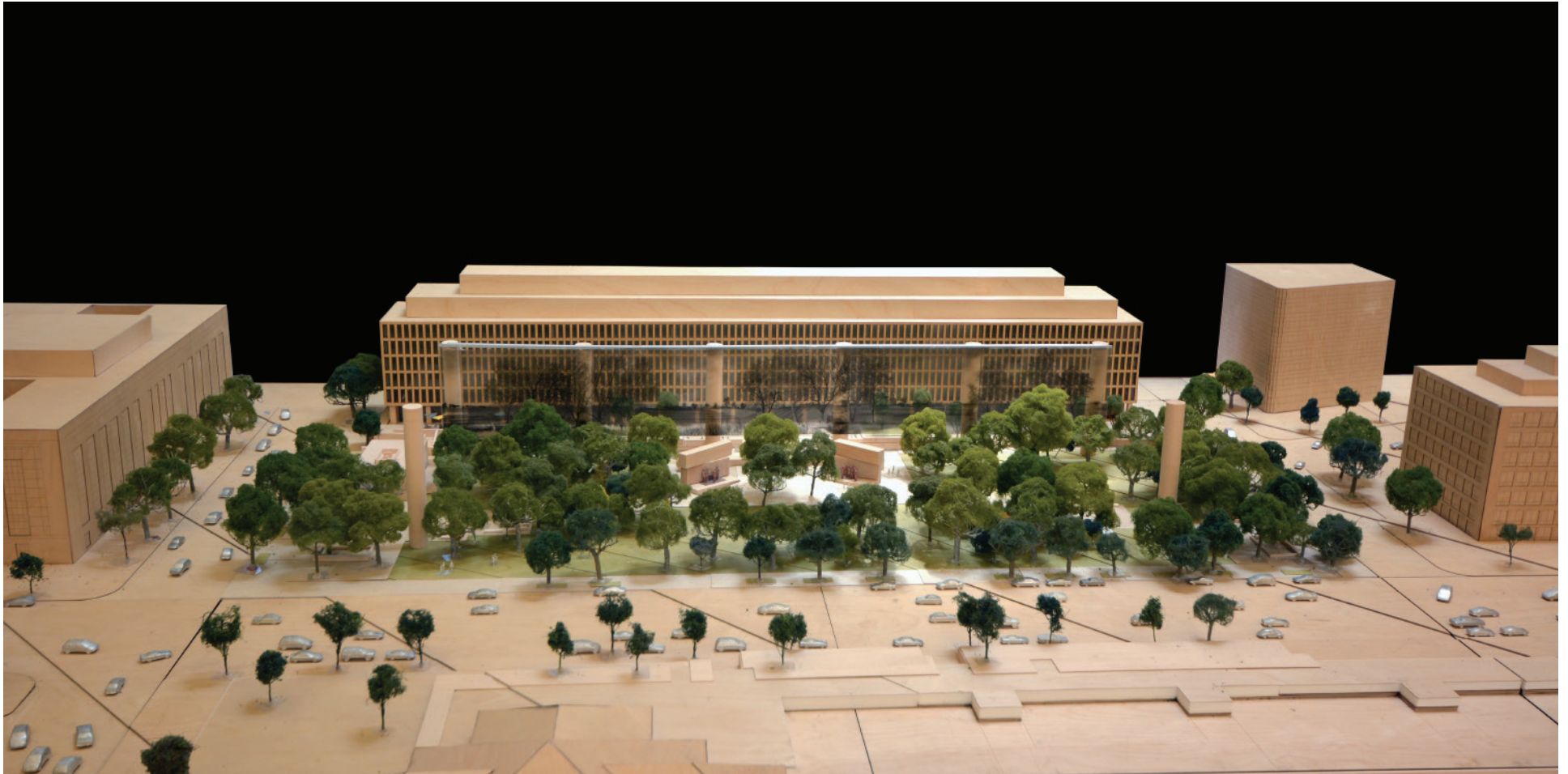
MOA STIPULATION 10: DESIGN REVISIONS IN RESPONSE TO PRELIMINARY REVIEW

DECEMBER 2011 SCHEME SHOWN IN RED

EISENHOWER MEMORIAL

Gehry Partners • AECOM Joint Venture

APPROVED PRELIMINARY DESIGN OCTOBER 2014



AERIAL VIEW

MOA STIPULATION 10: DESIGN RESPONSE TO NCPC PRELIMINARY REVIEW

EISENHOWER MEMORIAL

Gehry Partners • AECOM Joint Venture