

## **EISENHOWER MEMORIAL**

**U.S. COMMISSION OF THE FINE ARTS**

COMMEMORATIVE ARTS AND LANDSCAPE DESIGN

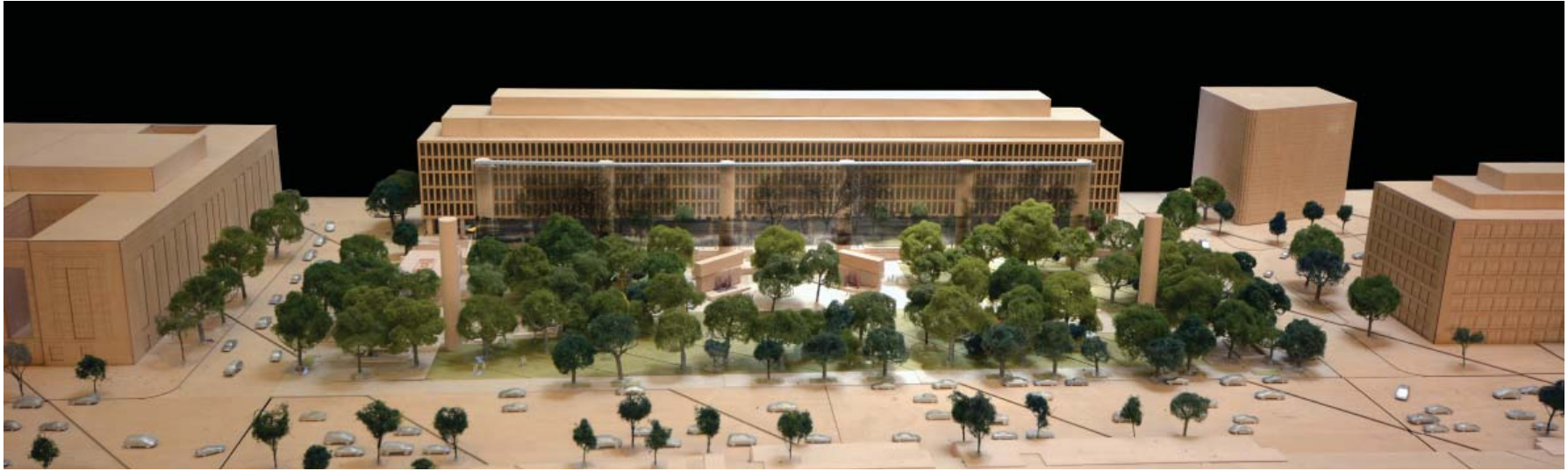
MEETING DATE: NOVEMBER 20, 2014

# TABLE OF CONTENTS

1. PROJECT OVERVIEW	
1.1 Design Overview	4
2. COMMEMORATIVE ART	
2.1 Interpretive Plan	8
2.2 Memorial Core	10
Young Eisenhower Sculpture	12
General Eisenhower Memorial Element	14
President Eisenhower Memorial element	16
2.3 Memorial Tapestry	18
3. LANDSCAPE DESIGN	
3.1 Urban Memorial Park	28
3.2 Landscape Design Concept	30
3.3 Tree Species	32
3.4 Groundplane	42
3.5 Maryland Avenue Allée	46

# SECTION 1: PROJECT OVERVIEW

## 1.1 DESIGN OVERVIEW



The proposed Eisenhower Memorial site is a four acre site in the Southwest district of Washington D.C. Located on Independence Avenue and Maryland Avenue, bound by 4th and 6th Streets SW, and Lyndon B. Johnson Department of Education building, the site has a unique urban situation unlike any other major Memorials. The site is directly on the Maryland Avenue axis, an important historical corridor with a viewshed to the U.S. Capitol.

To address the urban scale of this large four acre site and create an autonomous Presidential Memorial experience, the design proposes a unique commemorative art element with a stainless steel tapestry depicting scenes from Eisenhower's home in Kansas. The colonnade and tapestry create an urban room within the scale of the surrounding precinct and frame the entire site to distinguish the Memorial in a unified space. The columns are carefully arranged along Maryland Avenue running through the site to frame the view to the Capitol dome.

At the center of the project site is the contemplative Memorial space, where Eisenhower's legacy unfolds in an intimate setting. Heroic free standing sculptures, bas reliefs, and quotes celebrate Eisenhower's contributions to our nation as the 34th President and the Supreme Commander of the Allied Forces. Eisenhower as a young man is seated on a wall, looking towards his future achievements.

Eisenhower's humility, values, and achievements are what set him apart...so these are what will set the monument apart.

***This is a monument to his ideas. To the words that he left with us. To the principles that guided his decisions and fueled his remarkable achievements.***

The treatment of Maryland Avenue is a significant organizing component of the project. Maryland Avenue will be closed to street traffic, allowing the disparate parcels to transform the area into a inviting green space. Maryland Avenue will be restored to its original position and will be framed vertically with an allée of mature trees that in turn frame the Capitol dome.

Eisenhower Square is a memorial conceived as an urban park in an area of the city greatly needing a revitalized pedestrian experience. The park is designed to guide visitors through key view corridors across the site. The landscape design is distinguished by tree species reminiscent of the Midwest that provide ample shade and definition to the street edges and open spaces in the park.

To the south is an elevated area in front of the Lyndon B. Johnson building that becomes a new forecourt for the

Department of Education and a pedestrian Promenade with programming that supports outreach, outdoor seating and gathering areas.

Proof of concept mock-ups were created for the tapestry to demonstrate artistic quality, intent, and transparency established for this commemorative art element. The tapestry has technically developed since 2011 when the mock-ups were initially created. The engineering and material testing has been found by NCPC Commission to demonstrate the tapestry meets the Commemorative Works Act durability criteria.

The design team made significant revisions to the Memorial tapestry elements in response to NCPC Commission comments and received preliminary concept approval in October 2014. CFA also affirmed the design modifications giving the project a revised concept approval in October 2014.

The design features including the tapestry, sculpture, and quotations -- in addition to the landscape design, are the result of rigorous research in response to agency review comments. Each element is designed to create the most effective and powerful experience for visitors.

## 1.1 - DESIGN OVERVIEW

## CURRENT DESIGN





**TREE ALLÉE**  
Trees line the historic Maryland Avenue cartway, framing the Capitol vista.



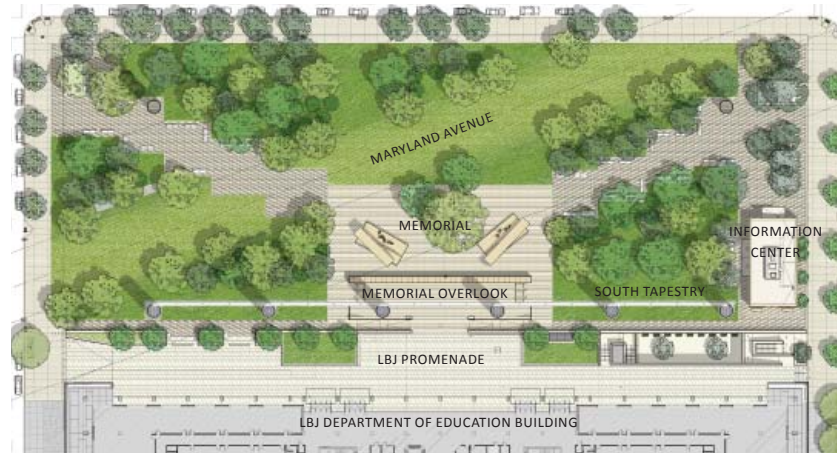
**TAPESTRY MOCKUP**  
The unique qualities of the stainless steel tapestry create a legible image while maintaining a level of transparency.



**TAPESTRY & COLUMNS**  
The unique defining element of Eisenhower square. The northern columns mark the park entry paths leading to the center of the Memorial.



**MEMORIAL CORE**  
The commemorating area of the site, where the public can view Eisenhower's legacy in a shaded intimate setting.



**STATUES AND RELIEFS**  
General and President Eisenhower are depicted with statues on the Memorial blocks that also include bas reliefs behind the figures.



## SECTION 2: COMMEMORATIVE ART

2.1 INTERPRETIVE PLAN

2.2 MEMORIAL CORE

YOUNG EISENHOWER SCULPTURE

GENERAL EISENHOWER MEMORIAL ELEMENT

PRESIDENT EISENHOWER MEMORIAL ELEMENT

2.3 MEMORIAL TAPESTRY

## AMERICA'S HEARTLAND IS THE HEART OF THIS MEMORIAL

Eisenhower's story is a classic American story - raised within a lower-middle-class background in rural Kansas, his "very heart of America." As a young man, he applied to West Point to get an education and quickly rose through the military to command the most complex military action in history. He later became the 34th President at a crucial time of massive global change.

Historians evaluating the legacy of the Eisenhower presidency have discovered certain truths of his clear vision and strong leadership. He ran a disciplined administration, in which his personal leadership was consistent and crucial. His approach on civil rights was responsible for the crucial judicial appointments and dramatic actions which moved the country toward a more equal society.

The Eisenhower Memorial is strategically designed to symbolize this extraordinary career in a way that gives visitors a sense of this remarkable leader, the times he helped shape and define, and the enduring impact of his legacy.

The Lincoln Memorial is the best example of a singular image defining a memorial. It is a temple within a picturesque setting. The central image is the Lincoln statue, which is flanked by written narratives of the Gettysburg Address and a portion of Lincoln's Second Inaugural Address. The proposed Eisenhower Memorial invokes the same awe through a similar approach.

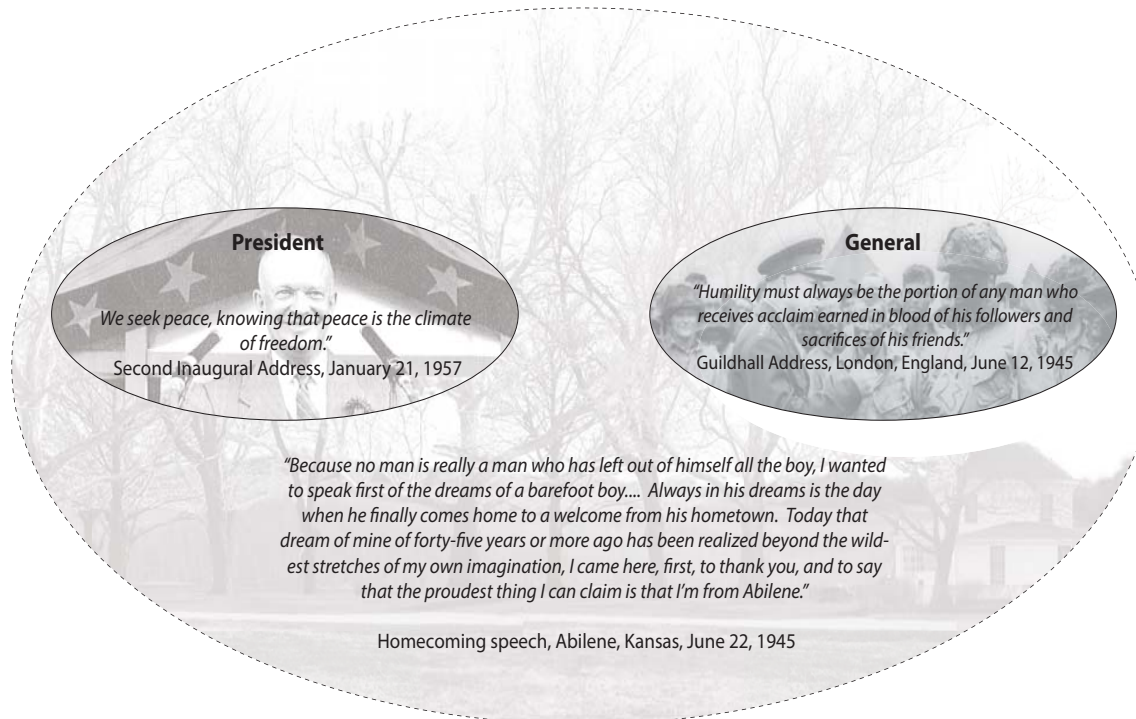
The commemorative tapestry art will reflect the landscape of Abilene, Kansas, which is both Eisenhower's hometown and the geographical center of the United States. America's heartland is the heart of this Memorial. At the very center of the site is Eisenhower as a young man. Sculptures, bas reliefs and quotations, will flank the centerpiece, providing a detailed and bold message of Eisenhower's accomplishments.

The goal of the representational visual elements of the Memorial is to give visitors a range of Eisenhower's experience and his influence in shaping his time, and our history. As a citizen, a soldier, and a president, Eisenhower represented the growth of American power in the increasingly interconnected

world of the 20th century. A boy raised where paved roads were a rarity, he created America's vital interstate system. A man who grew up in simple surroundings, he left the presidency with the preliminary plans in place that led to the Internet and the lunar landings.

Eisenhower's life experiences exemplify the "American Experience." The Midwestern landscape image is a metaphor for the United States as a whole, both as the geographic center (to the mile) as well as for a country evolving into its new global role at the exact time of Eisenhower's presidency. The Eisenhower Memorial represents the humility, poetry, and values instilled within the American landscape, which gave birth to one of the greatest US presidents.

This is the essence of Dwight D. Eisenhower.

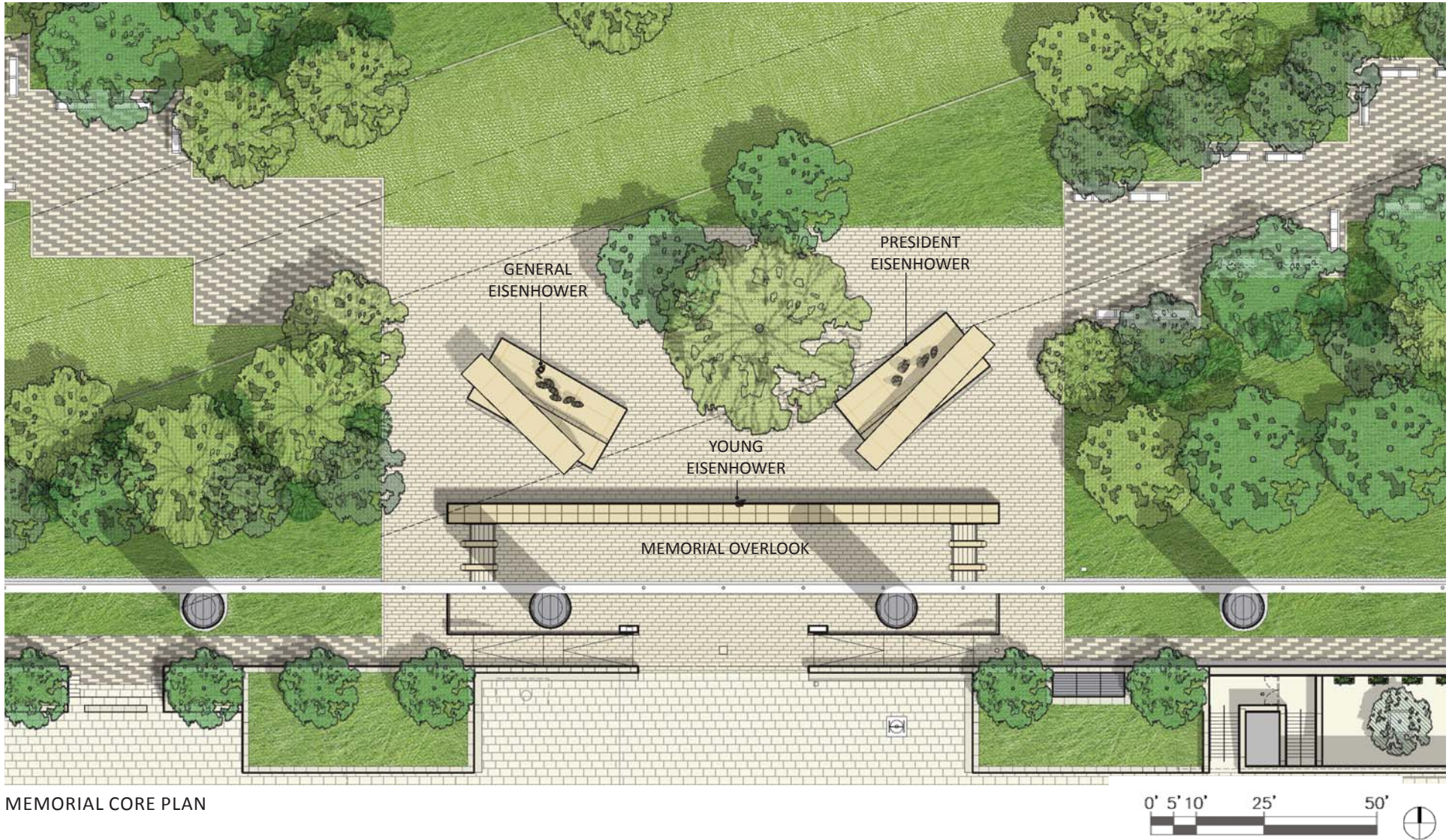






VIEW TOWARDS THE MEMORIAL FROM INDEPENDANCE AVENUE





MEMORIAL CORE PLAN

2.2 - MEMORIAL CORE





VIEW TOWARDS THE MEMORIAL FROM MARYLAND AVENUE



## YOUNG EISENHOWER SCULPTURE

***“Because no man is really a man who has left out of himself all of the boy, I wanted to speak first of the dreams of a barefoot boy.... Always in his dreams is the day when he finally comes home to a welcome from his hometown. Today, that dream of mine of 45 years or more ago has been realized beyond the wildest stretches of my own imagination, I came here, first, to thank you, to say the proudest thing I can claim is that I am from Abilene.”***

***Homecoming Speech, Abilene, Kansas June 22, 1945***

The sculpture of Eisenhower as a young man establishes the narrative for the Memorial. It shows the Eisenhower life as it embodies America’s story. It creates the connection between the tapestry depiction of the Kansas landscape that evokes his core values of:

Strength  
Modesty  
Integrity

...and his future accomplishments as a General and President. The sculpture sits in front of the tapestry within the vast Midwestern landscape gazing at his future self in quiet contemplation. This composition will invite the visitor to share in Eisenhower’s personal journey.

The middle-American family and social values of Eisenhower’s youth in the simple world of his time and place would embody democratic values in the core of the man who would become the General and the 34th President. He became the most popular man in the world. Multitudes of people – in countless countries – came to see him in the years following the war.

A simple man from the American heartland... who went on to accomplish the greatest of things that shaped the course of human history.

This is what made Eisenhower different – and this is what the Memorial *must* make clear for the generations of visitors who will come to see and learn about him.



EISENHOWER AS A YOUNG MAN VIEWED FROM MEMORIAL CORE



EISENHOWER AS A YOUNG MAN  
SKETCH MAQUETTE BY SERGEY EYLANBEKOV

### 2.2 - MEMORIAL CORE

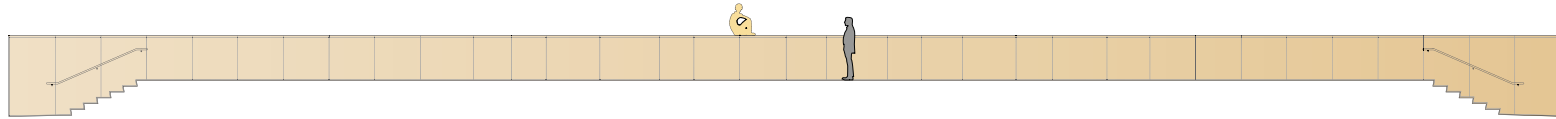
### YOUNG EISENHOWER SCULPTURE

## EISENHOWER MEMORIAL

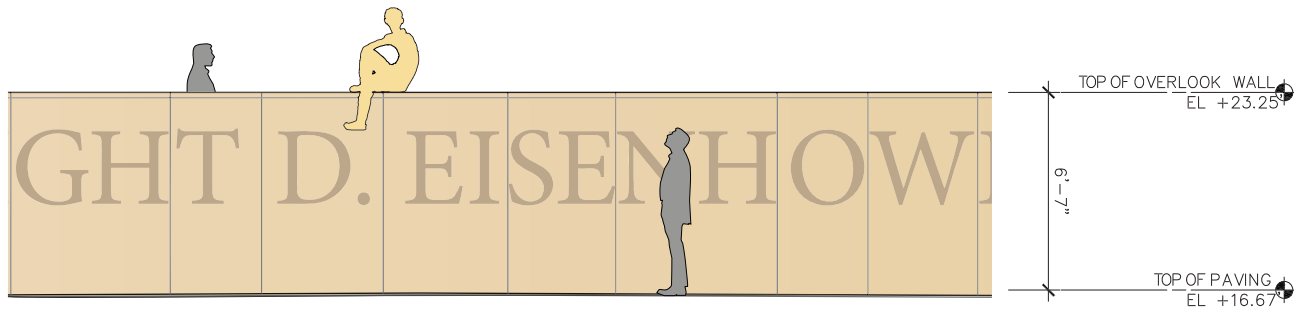
Gehry Partners • AECOM Joint Venture



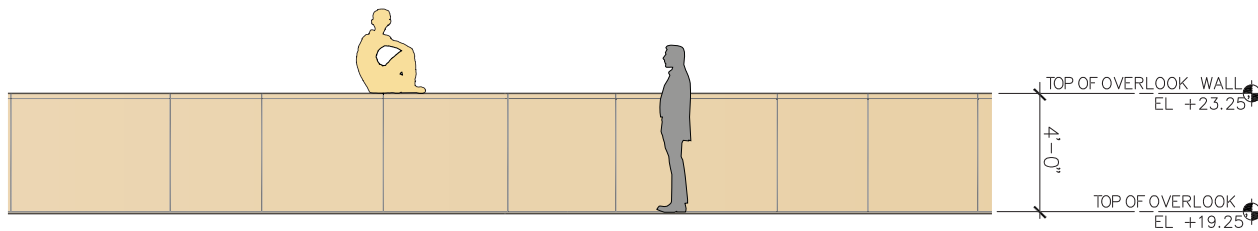
OVERLOOK WALL  
NORTH ELEVATION



OVERLOOK WALL  
SOUTH ELEVATION



OVERLOOK WALL  
NORTH ELEVATION DETAIL



OVERLOOK WALL  
SOUTH ELEVATION DETAIL

## OVERLOOK WALL INSCRIPTIONS

## 2.2 - MEMORIAL CORE



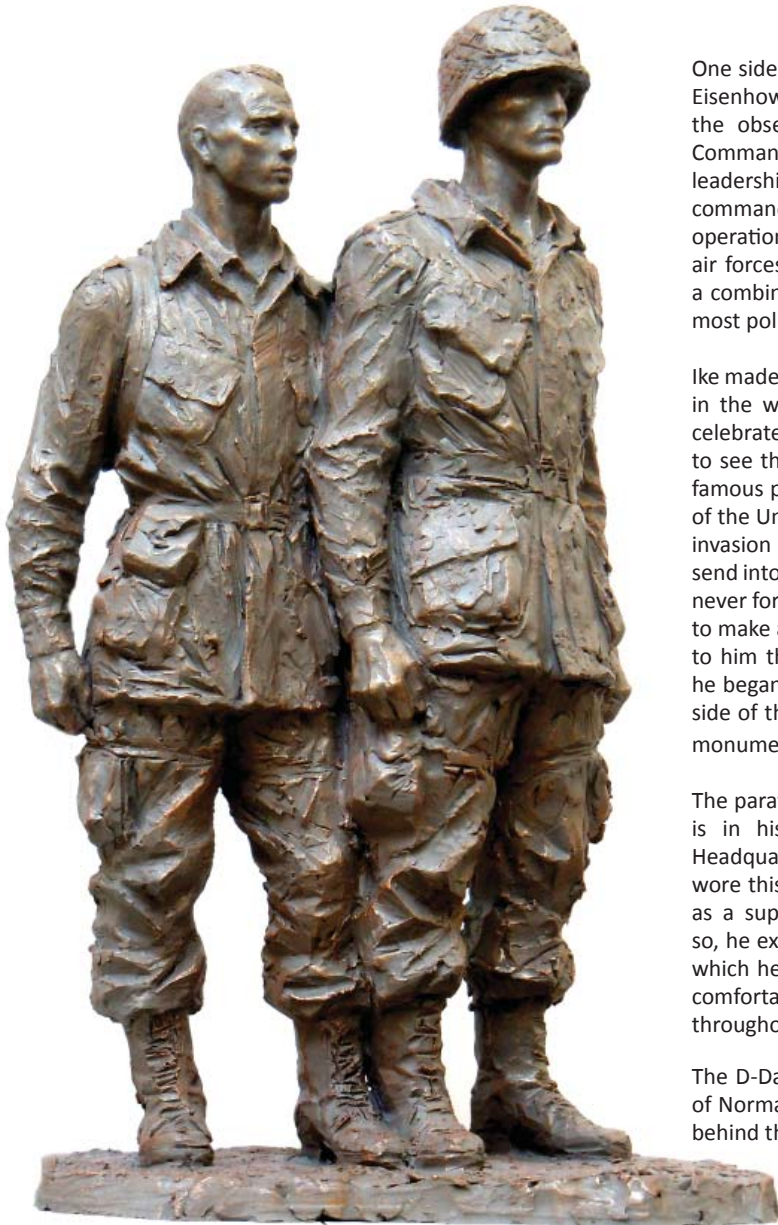


2.2 - MEMORIAL CORE

GENERAL EISENHOWER MEMORIAL ELEMENT



## GENERAL EISENHOWER MEMORIAL ELEMENT



LARGE SCALE DETAILED MAQUETTE OF SOLDIERS  
BY SERGEY EYLANBEKOV

One side of the Memorial core devotes sculpture to honoring Eisenhower's career as a military officer. The sculpture takes the observer back to June 1944, when Ike was Supreme Commander of the Allied Forces in Europe. He provided the leadership of the forces that invaded Europe on D-Day. He commanded the largest and most complex amphibious operation in history. To be successful, the sea, ground, and air forces of several nations had to be closely coordinated in a combined assault on the Continent. This was arguably the most politically complex wartime operation in history.

Ike made the final, crucial decision to take advantage of a break in the weather and launch the assault. The statuary, which celebrates one of the many visits General Eisenhower made to see the troops before going into battle, is inspired from a famous photograph of the General talking to the paratroopers of the United States 101st Airborne Division shortly before the invasion began. He was at ease talking to the men he would send into battle. This scene reminds the visitor that the General never forgot that he was asking his soldiers, sailors, and airmen to make a supreme sacrifice for their nations. Each soldier was to him the same sort of young man that he had been when he began his military career. The group representation on this side of the memorial sets the stage for the facing presidential monument.

The paratroopers are fully prepared for battle and Eisenhower is in his Class A uniform. During his days at Supreme Headquarters Allied Expeditionary Force, Eisenhower normally wore this uniform, signifying his acceptance of his formal role as a supreme commander, not a combat commander. Even so, he exercised the general's priority of tailoring the uniform, which he altered with his design of the less-formal and more comfortable short "Ike jacket". This became a uniform norm throughout the officer corps.

The D-Day invasion showing the troops landing on the beach of Normandy, France, on June 6, 1944 is depicted in bas relief behind the sculptures.



LARGE SCALE DETAILED MAQUETTE OF  
GENERAL EISENHOWER  
BY SERGEY EYLANBEKOV

## GENERAL EISENHOWER MEMORIAL ELEMENT

## 2.2 - MEMORIAL CORE

### EISENHOWER MEMORIAL

Gehry Partners • AECOM Joint Venture





## 2.2 - MEMORIAL CORE

## PRESIDENT EISENHOWER MEMORIAL ELEMENT



## PRESIDENT EISENHOWER MEMORIAL ELEMENT

When Dwight David Eisenhower took office on January 20, 1953, he already had a deep-rooted understanding of America's role in the world and the changes that were threatening our nation's blend of a democracy and a capitalist economy. Even some of America's strongest European allies were swinging away from the U.S. style of political economy. President Eisenhower reflected on how gravely the United States would be weakened if we no longer had the trading partners with whom we had long done business.

These ominous transitions were taking place in a world in which the United States was directly threatened by hostile military powers for the first time since the early nineteenth century. In this challenging setting, President Eisenhower provided the United States and the free world the firm leadership that was needed to keep the peace. He recognized that the great challenge for America was to win the peace without sacrificing the country's democracy or destroying its market-oriented economy. To do so, he charted what he called the "middle way." His "middle way" sought to balance our domestic political and economic needs with our needs for global preparedness. With a strong economy, a vibrant democracy, and a powerful military, we would send a clear message to our current and potential adversaries that the United States would resist their advances then and in the future.

To capture Eisenhower's leadership style, the presidential monument employs bronze statues on a heroic scale, set in the White House's oval office. As befits his role as both Chief Executive and Commander-in-Chief, Eisenhower stands at the center of the room. To his left is a military advisor, and to the President's right are two civilian advisors from the administration. The figures symbolize the tensions that existed between the need to be active in world affairs, sometimes with force, and the need to preserve peaceful relations. The President is shown in the center, in charge, balancing the constant, sometimes conflicting demands of national security and peaceful progress in a prosperous, democratic society.

The contrast between the presidential side of the memorial and the World War II figures is appropriate to the theme of winning the peace. There is less obvious drama in the Presidential statuary than in that representing his generalship; this is consistent with and symbolic of the contrast between the



PRESIDENT EISENHOWER MAQUETTE  
BY SERGEY EYLANBEKOV

hard, continual, grinding work of preserving the nation's peace and prosperity and the immediacy of war and the crucial days or weeks that can determine the outcome of even the greatest battles. Still, even on the Presidential side, the threat of war and the need to be prepared and strong would not go away during the eight years of the Eisenhower Administrations. His strategy was successful. The middle way worked, and the monument honors that great achievement.

## PRESIDENT EISENHOWER MEMORIAL ELEMENT

## 2.2 - MEMORIAL CORE

***“Whatever America hopes to bring to pass in the world must first come to pass in the heart of America.”***

***First Inaugural Address, January 20, 1953***

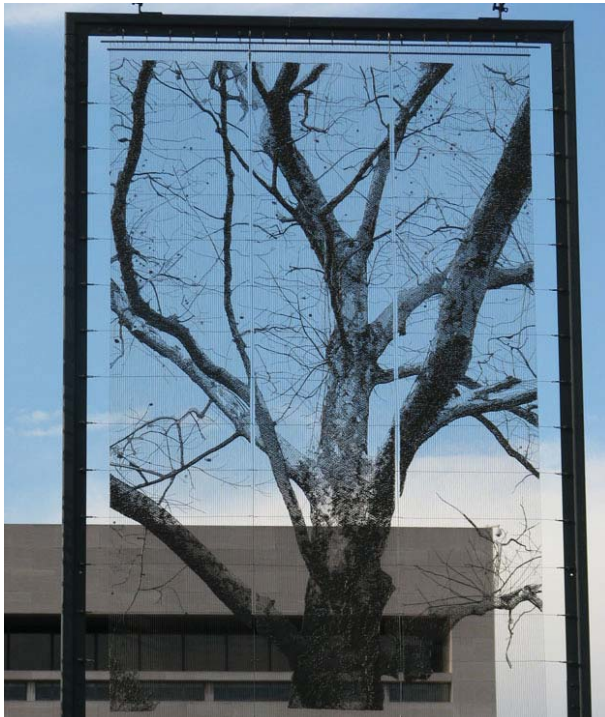
The tapestries are a unique method of memorialization presented for the Eisenhower Memorial. As previously described, the tapestry serves as a commemorative Memorial element as well as an urban site planning element, to create both a physical and symbolic context for Dwight D. Eisenhower.

Three stainless steel tapestry, positioned at the southern perimeter of the site frames the urban park with images reflecting the “American Landscape” and plains of Abilene, Kansas. The tapestries create an autonomous and picturesque experience, framing the context of Eisenhower’s early life, and bringing a piece of the American heartland to Washington D.C.

The landscape of the Kansas plains suggests its own simple and beautiful ontology and set of values. This actual and symbolic landscape formed the lens through which Eisenhower saw the rest of the world. He recognized and stated this fact throughout his life: “I come from the very heart of America,” and “Whatever America hopes to bring to pass in the world must first come to pass in the heart of America.”

The tapestry is composed of stainless steel cable of various sizes welded to create a drawing through the use of line and transparency. The image is inherent to the cable structure, providing a two sided image (mirrored) which changes

dramatically throughout the day with the passing light, from bright and reflective to dark as silhouette. The tapestry will be attached to a cable net structural system which spans between the colonnade. The tapestry will have vertical and horizontal seams at a width of 3 feet and 15 feet in vertical length.



TAPESTRY MOCK-UP VIEWED FROM LBJ BUILDING



TAPESTRY MOCK-UP VIEWED AGAINST THE LBJ BUILDING



TAPESTRY MOCK-UP ILLUMINATED AT NIGHT

## 2.3 - MEMORIAL TAPESTRY

## EISENHOWER MEMORIAL

Gehry Partners • AECOM Joint Venture



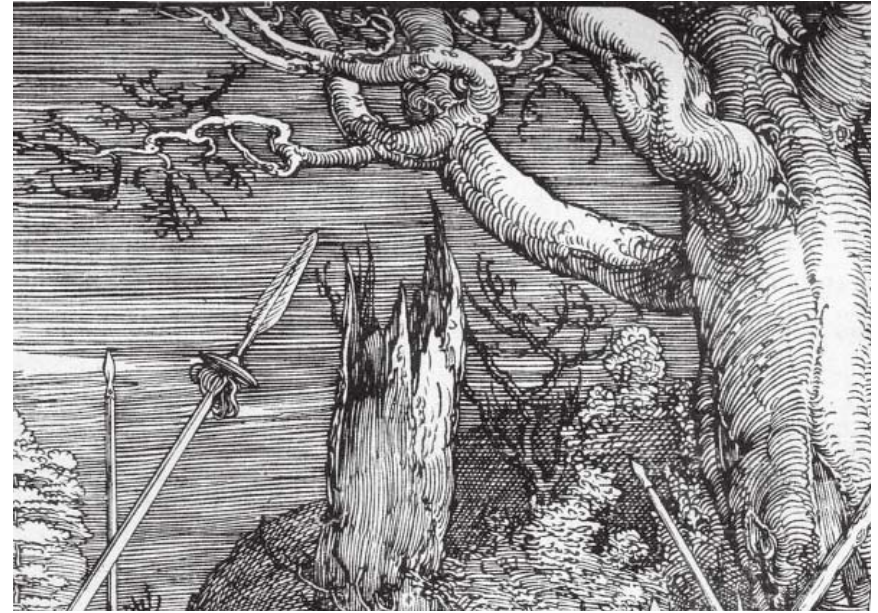
## PROOF OF CONCEPT & MOCK-UP PROCESS

In September 2011 the design team staged full scale mock-ups on the project site, in front of the Department of Education building that demonstrated various construction techniques and materials under development for the tapestry. The goal for the mock-up was to demonstrate artistic quality, intent and transparency in a manner fitting for the Presidential Memorial.

Three mock-up samples by different vendors were developed and reviewed in Washington D.C. The two best samples were elevated on the project site for further review. The three vendor proof of concept mock-ups, yielded a preferred method in that met the artistic and transparency requirements to the satisfaction of key stakeholders and agency reviewers. The preferred tapestry concept has been further developed to address technical, engineering and fabrication methods in addition to artistic refinement.

The design team has completed a *Tapestry Engineering and Testing Summary Data* submission to NCPC in response to technical questions about the tapestry element. This document provides comprehensive engineering information and test results for the proposed materials and structure and was found by the NCPC Commission to demonstrate that the tapestry satisfies the requirement identified in the Commemorative Works Act, “a commemorative work be constructed of durable material suitable for the outdoor environment.”

The technical fabrication advancements and testing results have informed the artistic development for this commemorative work.



EARLY ARTISTIC REFERENCE FOR THE TAPESTRY ART  
DETAIL OF WOODCUT BY ALBRECHT DÜRER - *THE KISS OF JUDAS*



PROOF OF CONCEPT MOCK-UP DETAIL SHOWING LANDSCAPE

MEMORIAL TAPESTRY - 2.3

## TAPESTRY COMPOSITION

The tapestry composition has been developed from photographs taken in Kansas and in Abilene. The photo montage is a result of study that incorporates Kansas landscape features on the tapestry. The sky and clouds were configured to emphasize the vastness of the landscape, and the roads and pathways represent man's presence in the environment. Trees were composed to create groupings. The main tree in the landscape image is the American Sycamore, which is a prominent tree

at Eisenhower's family home grounds. The design was also refined and adjusted according to the physical conditions near the tapestry including the columns, living trees and site entries and pathways. The tonal contrast of the composition has been exaggerated, keeping in mind the fabrication methods which rely on tonal density to create depth.



SOUTH TAPESTRY PHOTO MONTAGE COMPOSITION

## 2.3 - MEMORIAL TAPESTRY





IMAGES FROM ABILENE, KANSAS



SOUTH TAPESTRY PHOTO MONTAGE COMPOSITION

2.3 - MEMORIAL TAPESTRY





MEMORIAL TAPESTRY - 2.3

## TAPESTRY ART DEVELOPMENT

The photographic composition is a reference point for the final tapestry art. This image will be converted to line work to accommodate the CNC fabrication process. Customized software was developed to convert the photo image into line work drawings to support the fabrication method for the tapestry art. This process is still under development, however significant technological advancements have been made to date. The line drawing relies on layers of hatching to form an image, much like Albrecht Durer's woodcuts. The basic concept shown on the proof of concept mock-up utilizes 8

layers of stainless steel braided wires to create light and dark tones to form the image. This remains the basic artistic and fabrication principle.

The line art image is welded onto the tapestry structural base grid or "canvas" by automated computer numerically controlled (CNC) welding equipment invented exclusively for the tapestry fabrication. Eight art layers are applied to the structural grid, four on each side, allowing the same art quality on the front and back of the tapestry.

A series of software programs were utilized to develop the line art. The programs were customized to create desired artistic effects as well as control the frequency of welds. The artist selects the layer combinations to enhance the image on a particular panel, and can add additional highlights as needed which can be applied to the panel with the automated CNC machine.



DETAIL OF THE MOCKUP WELDING PROCESS SHOWING THE ACCUMULATION OF THE DIFFERENT LAYERS. THE LAYERS ARE COMPILED TO ACHIEVE THE FINAL IMAGE.



ORIGINAL IMAGE COLLAGE FROM PHOTOGRAPHS

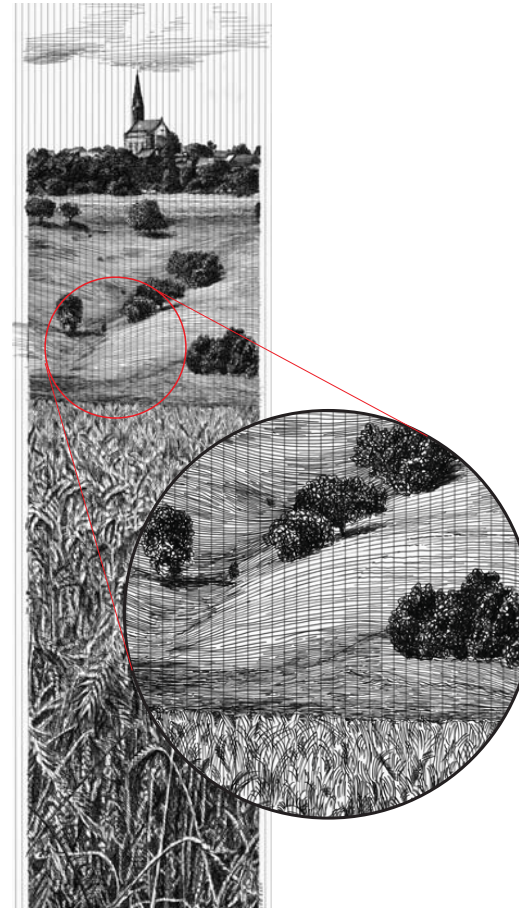


IMAGE HAND-DRAWN BY ARTIST



PATTERN GENERATED USING SOFTWARE  
EARLY STUDY WITH NINE LAYERS

### 2.3 - MEMORIAL TAPESTRY

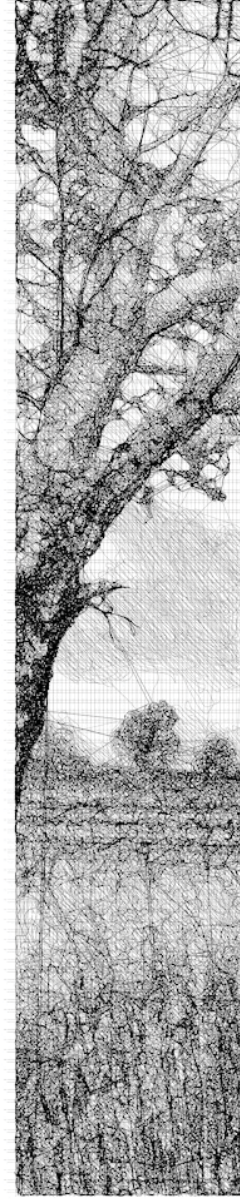


## TAPESTRY TECHNICAL MOCKUP

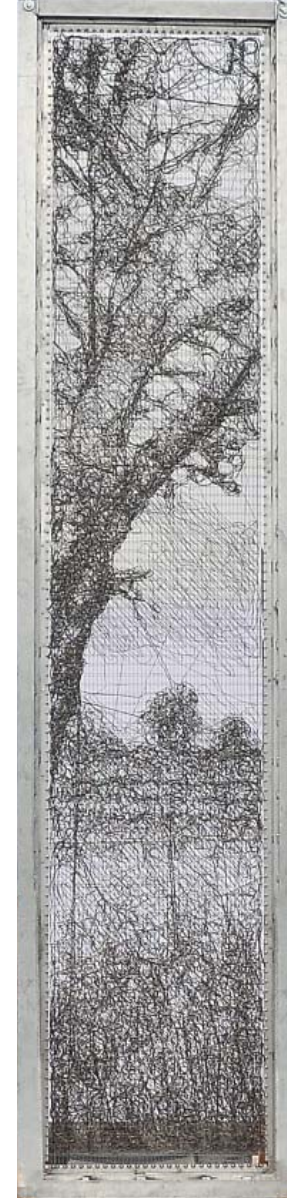
These images show the culmination of a two year research and development process to resolve the artistic, and technical fabrication methods for the tapestry production. The efforts culminated in one 3' x 15' panel fabricated from the prototype CNC welding equipment developed for the tapestry. The technical mockup incorporates the welding and durability testing lessons learned in the panel design. The three images shown reflect the three stages of production. The first image shows the tapestry photomontage cropped to one full size panel. The second image shows a line art drawing generated from the photo image. The third photo shows the tapestry prototype panel produced on the automated equipment. The image is shown with a white background to evaluate tapestry art quality against the line drawing original. It is important to note that the line art drawing and the tapestry panel are directly related. Therefore, the artist can utilize the computer line art image as a reflection of the constructed panel. Although the image quality needs artistic refinement, the technical mockup represents a significant milestone in the development of the tapestry art. Further art development will build on this foundation.



1. PANEL PHOTO IMAGE



2. LINE DRAWING SHOWING ALL LAYERS



3. TAPESTRY PANEL MOCKUP 3' X 15' WITH 9 LAYERS MADE WITH AUTOMATED EQUIPMENT. SHOWN WITH WHITE PANEL BEHIND TO DISPLAY THE ART.

## MEMORIAL TAPESTRY - 2.3

## SECTION 3: LANDSCAPE DESIGN

- 3.1 URBAN MEMORIAL PARK
- 3.2 LANDSCAPE DESIGN CONCEPT
- 3.3 TREE SPECIES
- 3.4 GROUNDPLANE
- 3.5 MARYLAND AVENUE ALLÉE

### 3.1 URBAN MEMORIAL PARK

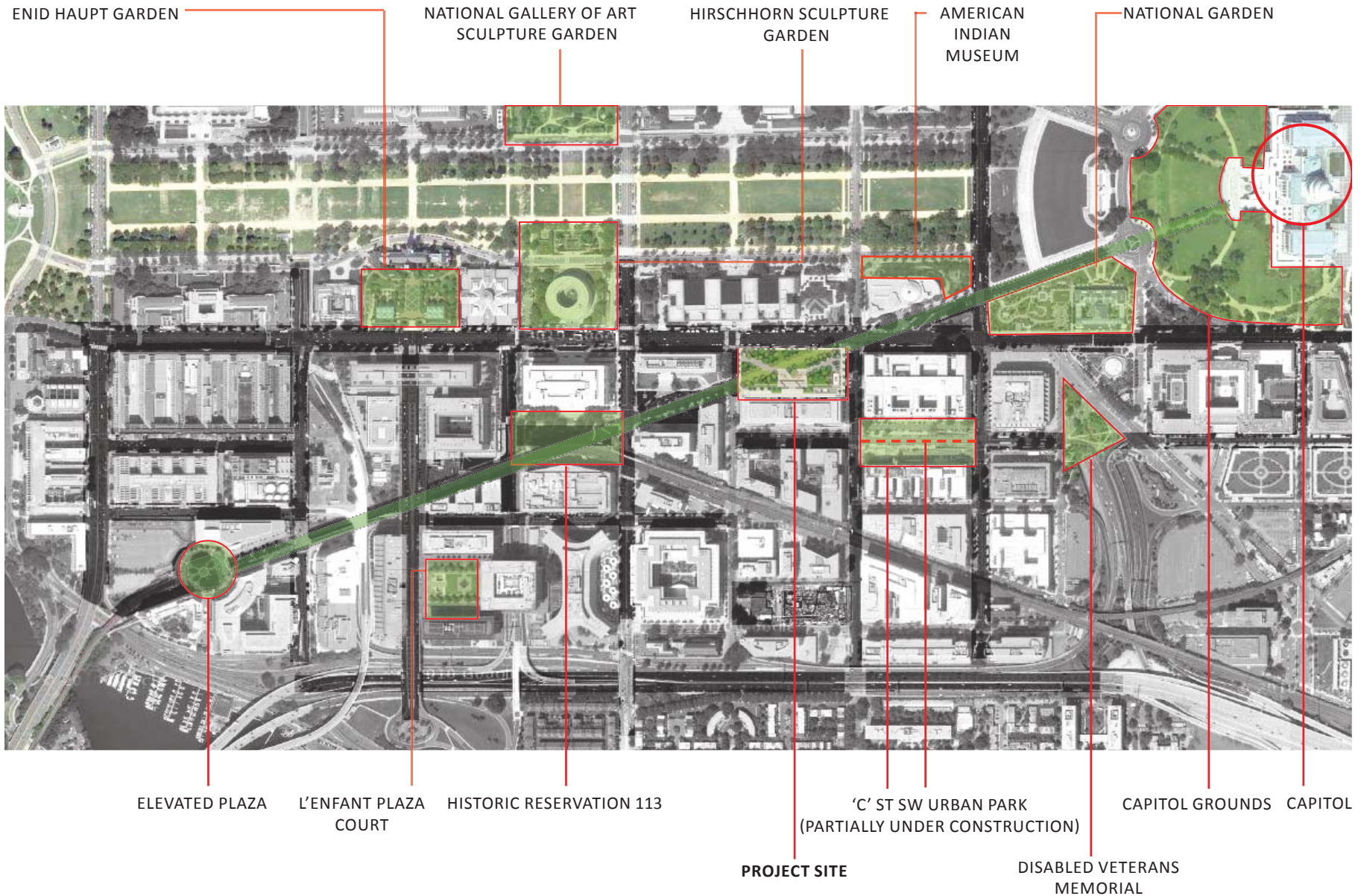
The Eisenhower square will be experienced as public realm open to three sides: 4th and 6th Streets and Independence Avenue SW. An ample setting for the Department of Education headquarters in the Lyndon B. Johnson building is provided on the south frontage with an urban pedestrian promenade carried the length of the building.

The square is developed as an urban park memorial, a green space with trees and a grassy ground plane with broad walkways through to the Memorial. The memorial park is a contemplative setting for the Memorial's commemorative expression at the center of the site where Eisenhower's story unfolds. The memorial park landscape is an integral element of the Memorial's character, composition and intent.

The memorial park landscape inverts the traditional memorial temple in a grove. The open room created by the colonnade and tapestry engages passersby on city streets at the urban scale. The interior landscape park is a powerful element of the overall Memorial design. The memorial park's gathering spaces, shaded oasis and broad walks will provide opportunities for experiencing the Memorial through educational, artistic, and natural content. The Eisenhower Memorial, with its many civic amenities, will help bring new life to the city's Southwest quarter.

The park landscape is designed to enhance the pedestrian visitor experience to the Memorial. Many visitors will arrive from the museums to the north and other destinations on the National Mall. The entrance plazas at the northeast and northwest corners of the site are designed for visitors to gather before entering the Memorial grounds. Visitors will also arrive by bus along 4th street near the Information Center.





SEQUENCE OF PUBLIC SPACES ALONG MARYLAND AVENUE

URBAN MEMORIAL PARK - 3.1



## 3.2 LANDSCAPE DESIGN CONCEPT

The landscape design, along with the tapestry, evokes a landscape character reminiscent of Eisenhower's formative years, in the town and countryside he knew so well; the "heartland of America." The design intent is to create a landscape abstraction of the Abilene landscape that is spatially, texturally, and scale compatible. The Memorial landscape design is conceived as an unfolding experience carefully constructed to reveal individual elements of interest along walks and vistas. The Memorial grounds create an opportunity for discovery and experience the juxtaposition of shade trees, understory trees, and ground plane.

The landscape design is a counterpoint to the rectilinear tapestry and Memorial core. The tree groupings are composed to create specific view relationships with the tapestry, the Memorial elements and the pedestrian experience. The planting scheme focuses the visual environment as the visitor approaches and moves through a landscape of direct and filtered views. The landscape provides shaded places, sunny open vistas, and a reflective environment for visitors to contemplate the 34th President, Dwight D. Eisenhower. The visitor will be able to experience the full spatial context from ground, to the memorial elements, and tapestry; and up to the sky-dome as an implicitly a fundamental experience.

The tapestry provides consistency, continuity and a visually arresting connection between images and living things, reinforcing the message of landscape's power to shape man's character. Landscape and tapestry together create emotional connectivity within the Memorial environment. The free-standing columns serve to mark the entry to the memorial park, connecting past remembrances to present movement and engagement.

The landscape with its trees and lawn draws from the precedent of Washington's well-known downtown green spaces and creates a moving Memorial setting. Tree characteristics and species have been selected to engage visually and experientially with the tapestry, to provide edge definition, to create shaded and sunny outdoor places, and to modulate spatial character with the seasonal experience and the passage of time.

Scale and species characteristics of trees are carefully layered to create space, movement through the site, and interaction with the tapestry. Trees are placed mostly within taller lawn areas, with some placed in paving and planters at the entrance plazas and at the Memorial core, where both shade and hard surfaces to accommodate visitors.

Along the Maryland Avenue axis, an allée of trees has been envisioned to define the viewshed towards the Capitol dome. The spacing of the trees along the allée have become less regular by introducing voids in the planting and altering spacing so that the axis is defined by the edge of the grove and not necessarily a traditional allée. The Maryland Avenue cartway is expressed with a continuous well-groomed and reinforced lawn which carries the wide spatial vista uninterrupted.

The ground plane is united with simple, easily-navigated walkways and a greensward accessible from any point on the perimeter and within. The landscape is simply articulated as either mown lawn – along Maryland Avenue - or as a more casual ungroomed lawn. The extent of green landscaped ground plane is maximized and treated as a horizontal environment. The elevated Promenade in front of the Lyndon B. Johnson building distinguishes this area from the Memorial, and provides accessible entry to the building's ground floor. The Promenade permits a freely-accessible perambulation of the entire Memorial.

The two entrance points to the Memorial at the northeast and northwest corners lead visitors along main approach walks toward the central Memorial core. The walkways are more intimate with understory tree placement. The walkways to the Memorial provide seating and generous plaza space for people in groups and families, and for pedestrian circulation. The perimeter sidewalks and street tree placement surrounding the square interconnect the Memorial with the precinct. The result is a strolling experience that unifies city street grid and memorial landscape.

While the tree species selection in the Memorial extends a consistent canopy character and plant palette across the park, the street trees follow city standards of planting. Street tree planting, in spacious planting strips, is integrated with street lighting, related typical streetscape appurtenances and with the standard exposed aggregate city sidewalk paving for the area.

The micro-climate of the Memorial will be both sunny and shaded. Shade is provided by the high canopy of the significant number of large trees, and by the presence of surrounding buildings. Shaded gathering areas occur under trees in lawn and pavement, and sunnier prospects are articulated at the core Memorial elements. The ambiance of the Memorial landscape will present a reflective, open and shade-dappled, airy and light-filled urban memorial.

Key landscape design elements summary:

1. The Eisenhower square is an urban Memorial with landscape as a fully integrated and contributing element.
2. Given its powerful location and underlying purpose the design establishes the primacy of the Memorial idea as the guiding landscape objective.
3. Landscape development is organized with an almost continuous shady tree canopy and a simply articulated grassy ground plane.
4. View axes to the Memorial down the principal approach walkways, and from Independence Avenue, create ground-to-sky dome vistas that focus on the Memorial core.
  - a. The Maryland Avenue axis is denoted by fully open cartway, with groomed lawn, focused on the Capitol, and flowing simply into the vista open spaces of these memorial-focused diagonal and perpendicular views.
  - b. The allée along Maryland Avenue has been articulated by an irregular tree arrangement so that the axis is defined by the edge of the groves and not by a traditional allée.
5. Entrance plazas and the singular columns serve as entry markers to the Memorial park and core.
6. Street tree plantings create a tight enclosing canopy for the perimeter of the Memorial park.
7. Interior Memorial tree species are selected and located to create visual seasonal interest, relate to the visual frame of tapestry and core, and reinforce the visual axes of the approach walkways, of the views from Independence Avenue and of Maryland Avenue.
  - a. Visually and spatially, understory trees provide intimate spaces along the margins of the approach walkways and act to focus walkway experience toward the Memorial core.
8. Seating, signage and interpretation and visitor amenities are concentrated in the entrance plaza areas.
9. The approach walkways are enlivened with seating areas providing opportunities for groups to gather and reinforce a welcoming memorial atmosphere.

## 3.2 - LANDSCAPE DESIGN CONCEPT



**SITE PLAN**

- |   |                  |
|---|------------------|
| ① GENERAL EISENHOWER MEMORIAL ELEMENT   | ④ WEST COLUMN    |
| ② PRESIDENT EISENHOWER MEMORIAL ELEMENT | ⑤ EAST COLUMN    |
| ③ YOUNG EISENHOWER STATUE               | ⑥ SOUTH TAPESTRY |

LANDSCAPE DESIGN CONCEPT - 3.2





### 3.3 TREE SPECIES

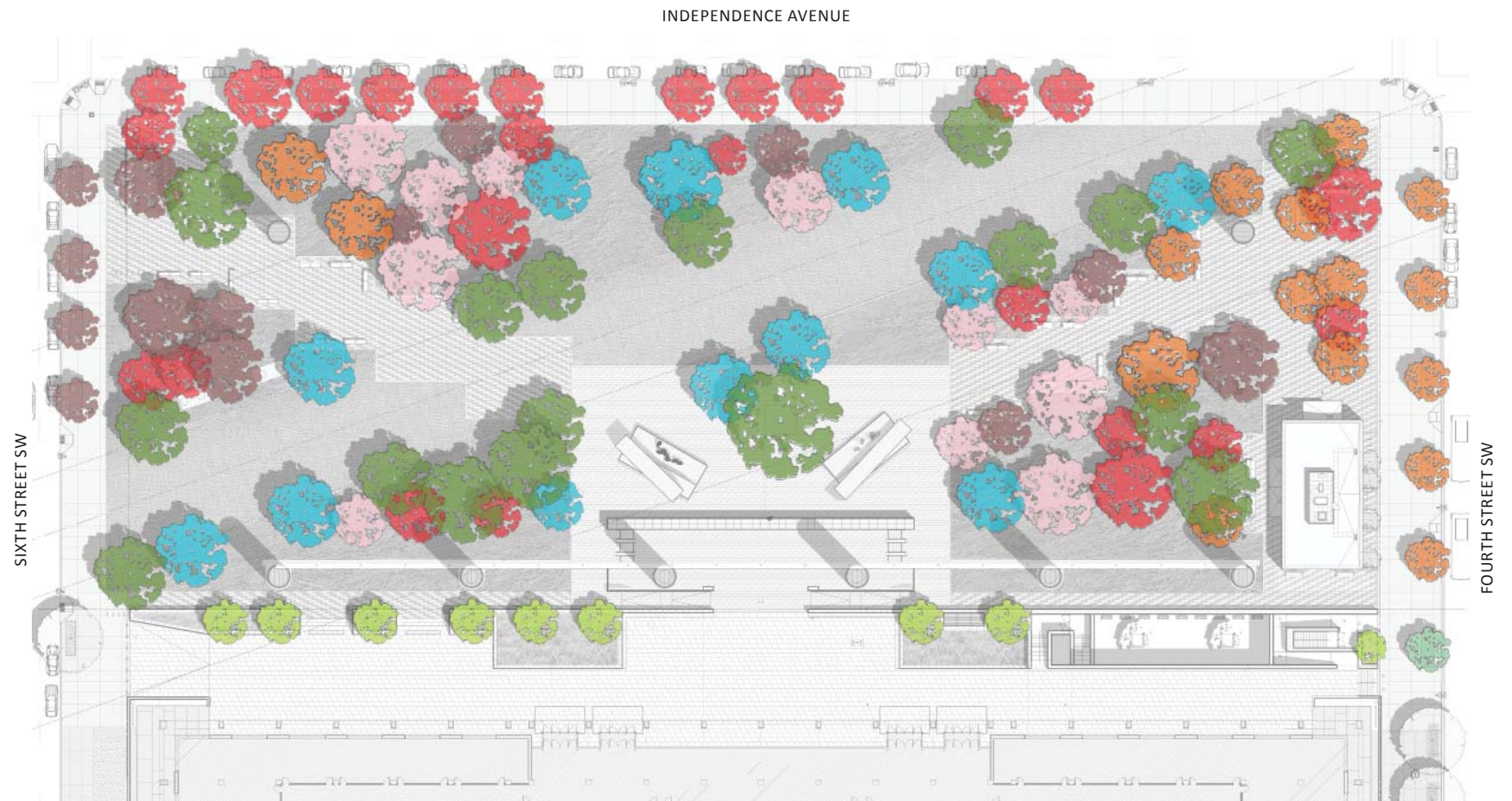
The landscape design creates a sheltered central park within the Memorial core, and a respectful planting along the Maryland Avenue axis. The tree groves create a shaded civic space over the grounds, providing respite and shelter for visitors as a seasonally-changing complement to the permanent elements of the Memorial.

The open-canopy grove is a sustainable native landscape, planted with a limited variety of canopy trees at varying stages of maturity, in order to mark the passage of time and to provide for orderly replacement. The grove's design 'naturalizes' the intended character of the landscape against the more formal organization of the Memorial's structures. The tree species selected are complementary in nature to each other's character and fitting to the overall site concept. The species are all suited for the Mid-Atlantic, urban environment of downtown Washington.

Canopy tree species are selected for their overall size and the height of their canopy above the ground, so as to ensure ready visual and physical accessibility to the entire Memorial, and to create a visually open landscape. Understory tree plantings serve to create a sense of procession and intimacy along the approach walkways.

The trees along Independence Avenue create a strong green perimeter for the Memorial. The street tree species have been selectively pulled into the planting plan of the perimeter Memorial park to provide for a more integrated planting design.





TREE SPECIES PLAN

### 3.3 - TREE SPECIES

#### SHADE CANOPY TREES

## EISENHOWER MEMORIAL


Gehry Partners • AECOM Joint Venture






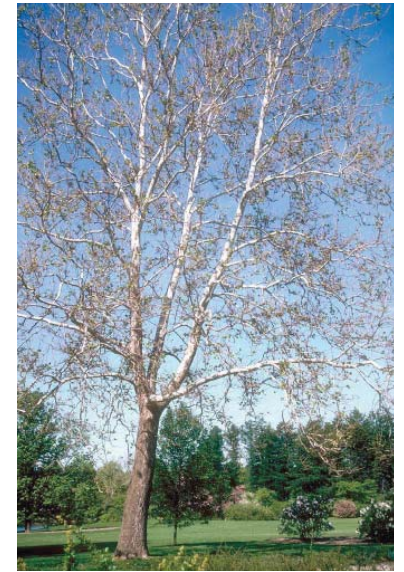
 Red Oak  
*Quercus rubra*




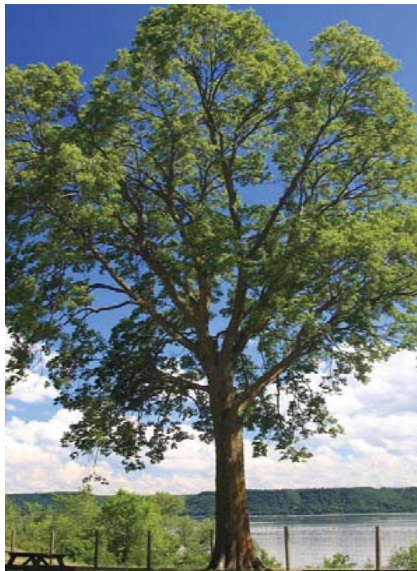
 Shingle Oak  
*Quercus imbricaria*




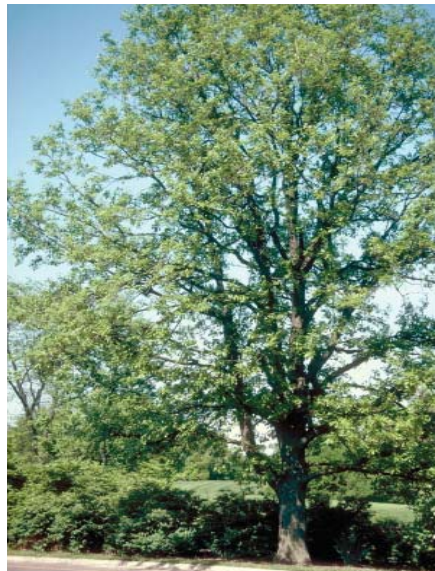
 Swamp White Oak  
*Quercus bicolor*




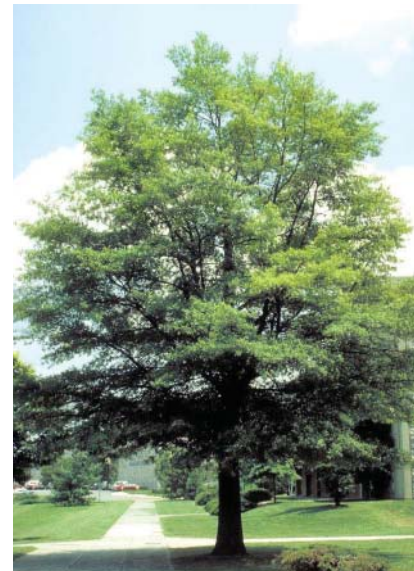
 London Plane  
*Platanus x acerifolia*



 Hackberry  
*Celtis occidentalis*




 Bur Oak  
*Quercus macrocarpa*



 Willow Oak  
*Quercus phellos*



 American Elm  
*Ulmus americana 'Valley Forge'*

### 3.3 - TREE SPECIES





SPRING CANOPY COLOR

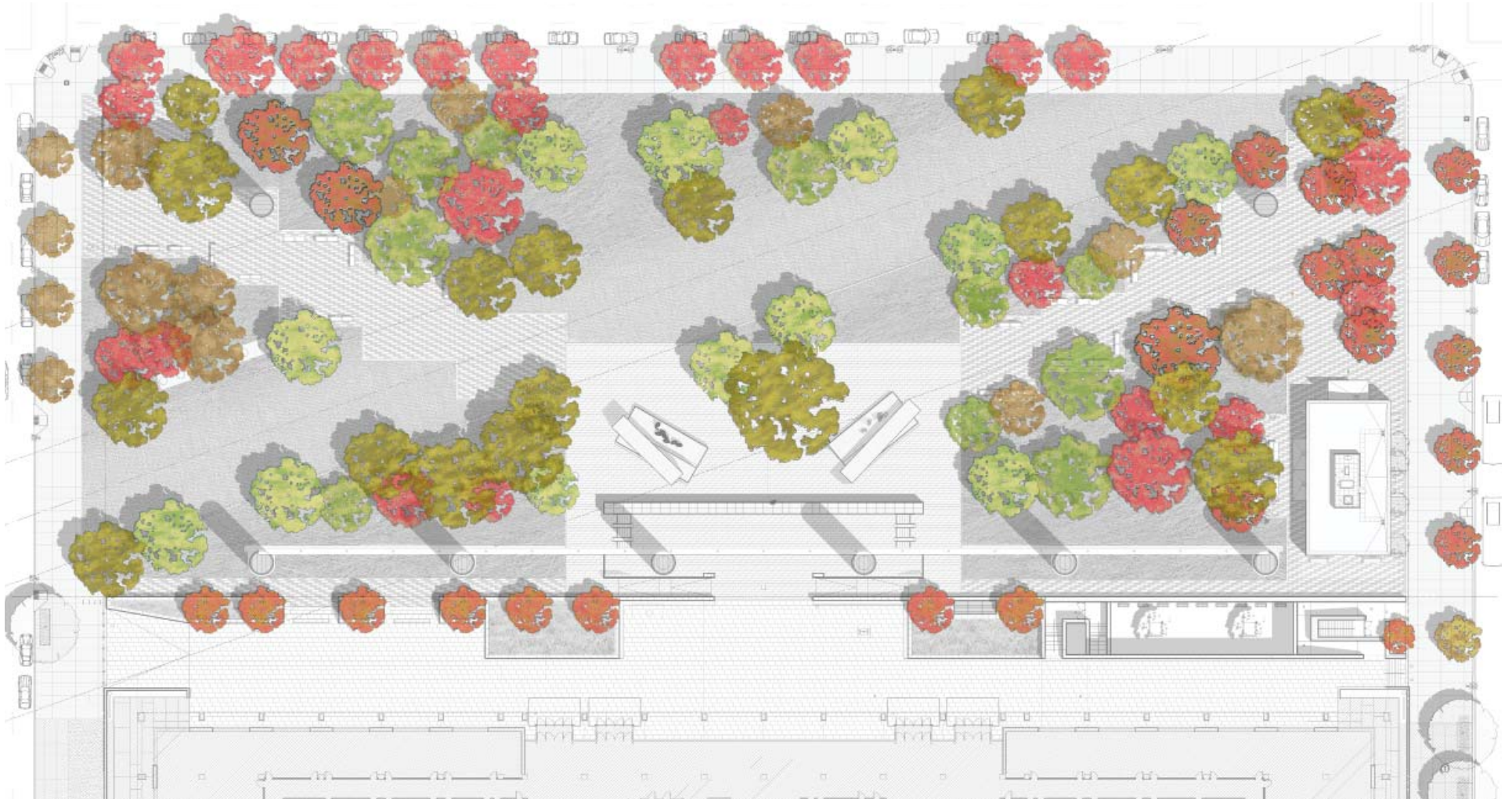
### 3.3 - TREE SPECIES

### SHADE CANOPY TREES COMPARISON

#### EISENHOWER MEMORIAL

Gehry Partners • AECOM Joint Venture





FALL CANOPY COLOR

### 3.3 - TREE SPECIES





### 3.3 - TREE SPECIES





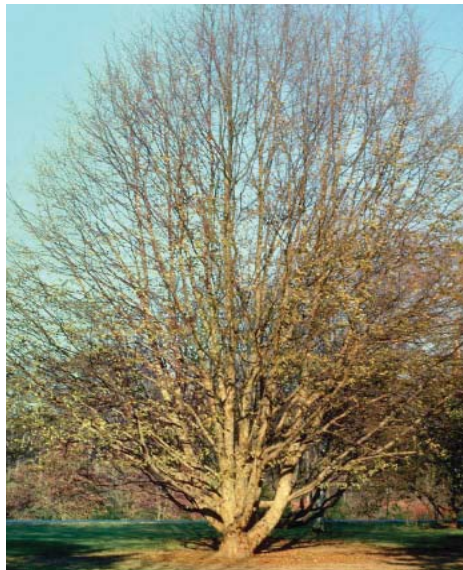
Flowering Dogwood  
*Cornus florida CV*



Ironwood  
*Carpinus caroliniana*



Eastern Redbud  
*Cercis canadensis*



American Hophornbeam  
*Ostrya virginiana*



Allegheny Serviceberry  
*Amelanchier laevis*

## TREE SPECIES - 3.3





STREET TREES IN SURROUNDING AREA

### 3.3 - TREE SPECIES

KEY:

MEMORIAL TREES



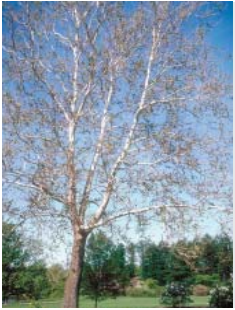
Red Oak  
*Quercus rubra*



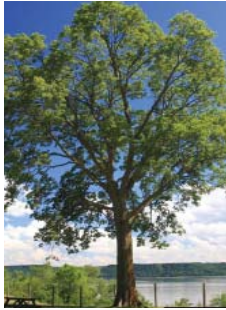
Shingle Oak  
*Quercus imbricaria*



Swamp White Oak  
*Quercus bicolor*



London Plane  
*Platanus x acerifolia*



Hackberry  
*Celtis occidentalis*



Bur Oak  
*Quercus macrocarpa*



Willow Oak  
*Quercus phellos*

NEIGHBORING STREET TREES



Southern Magnolia  
*Magnolia grandiflora*



Japanese Zelkova  
*Zelkova serrata*



Elm  
*Ulmus americana*



Scarlet Oak  
*Quercus coccinea*



Littleleaf Linden  
*Tilia cordata*



Allegheny Serviceberry  
*Amelanchier laevis*



### 3.4 GROUNDPLANE

The landscape ground plane throughout the memorial has two zones: a shorter groomed lawn, and a taller ungroomed lawn suitable for the shady areas under the park canopy. The soil on the entire site is to be replaced with soil types designed to encourage plant growth and health, accept pedestrian traffic, and promote drainage.

Maryland Avenue is distinguished in the field by groomed lawn engineered for pedestrian use and will be planted with the National Park Service's National Mall Seed Mix to provide a high-traffic, compaction-resistant green lawn area. No grade differentiation is made from the rest of the memorial, permitting a single simple expression of ground plane topography throughout but the open spatial axis and tree plantings provide emphasis.

Throughout the rest of the memorial, the grass is taller, less groomed. This taller lawn area is a mix of Fescue blends and Kentucky Bluegrass customized to meet shade and partial shade, and traffic-resistance. These mixes will thrive under trees and in shade-dappled open areas at a 6-8" height. The groomed and taller lawns are separated by an 8" wide granite strip which is flush with the ground and will define the historic cartway.

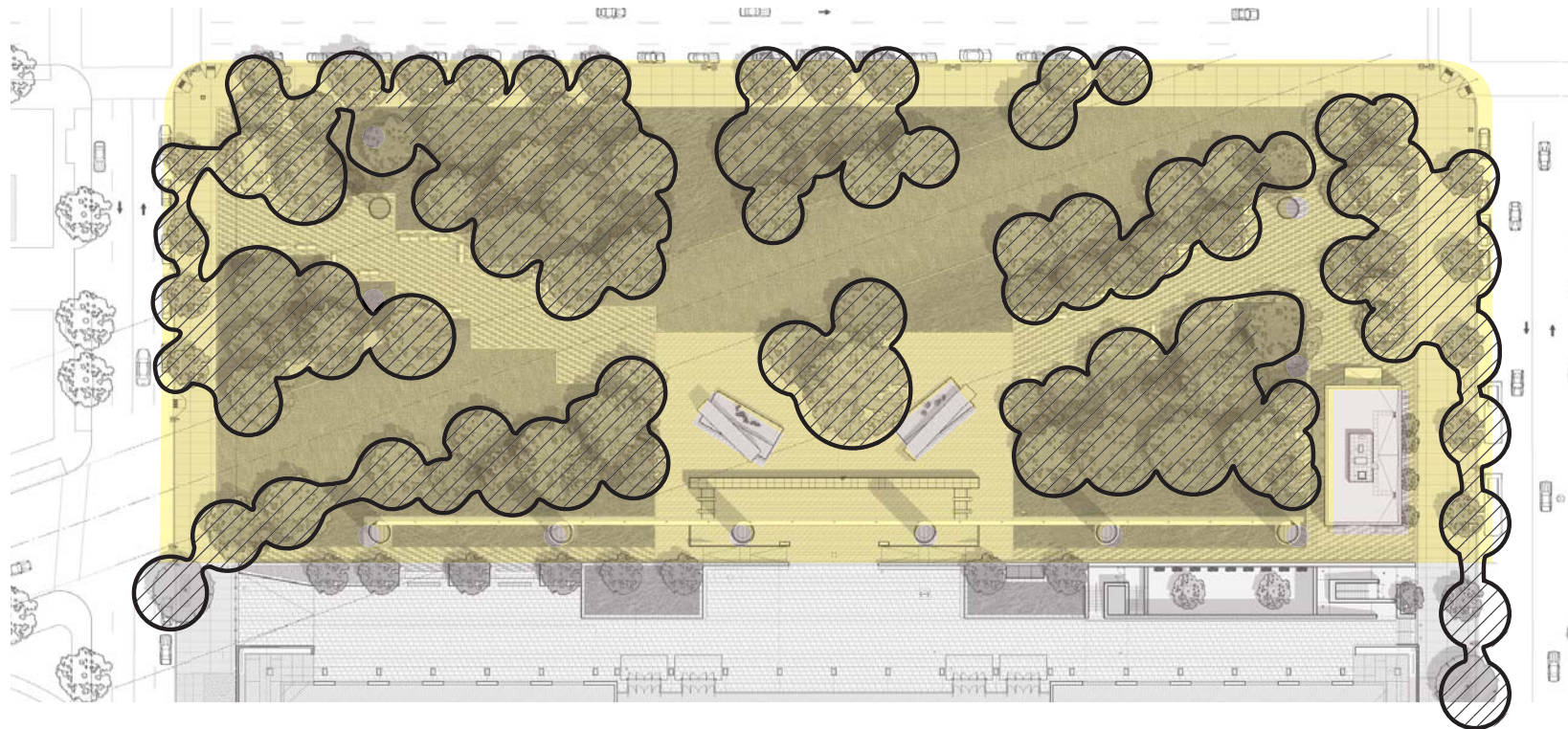
The site slopes gently downward from west to east, and plazas, with terraces and walkways are designed to integrate to that gentle slope condition, preserving a topographic focus on the ramping pavement of the memorial core.



VIEW SOUTHEAST TOWARDS MEMORIAL CORE FROM INDEPENDENCE AVENUE

### 3.4 - GROUNDPLANE



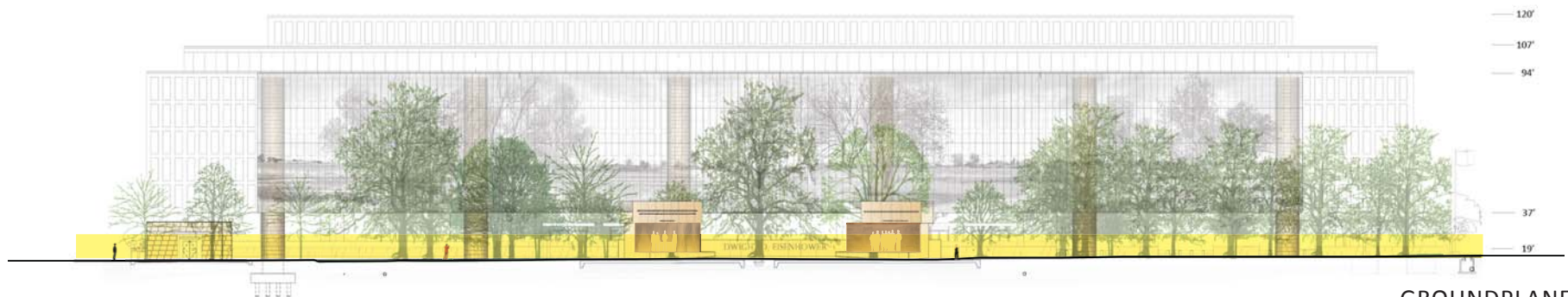


SHADE TREE CANOPY ORGANIZES VIEWS, APPROACH AND CENTRALITY



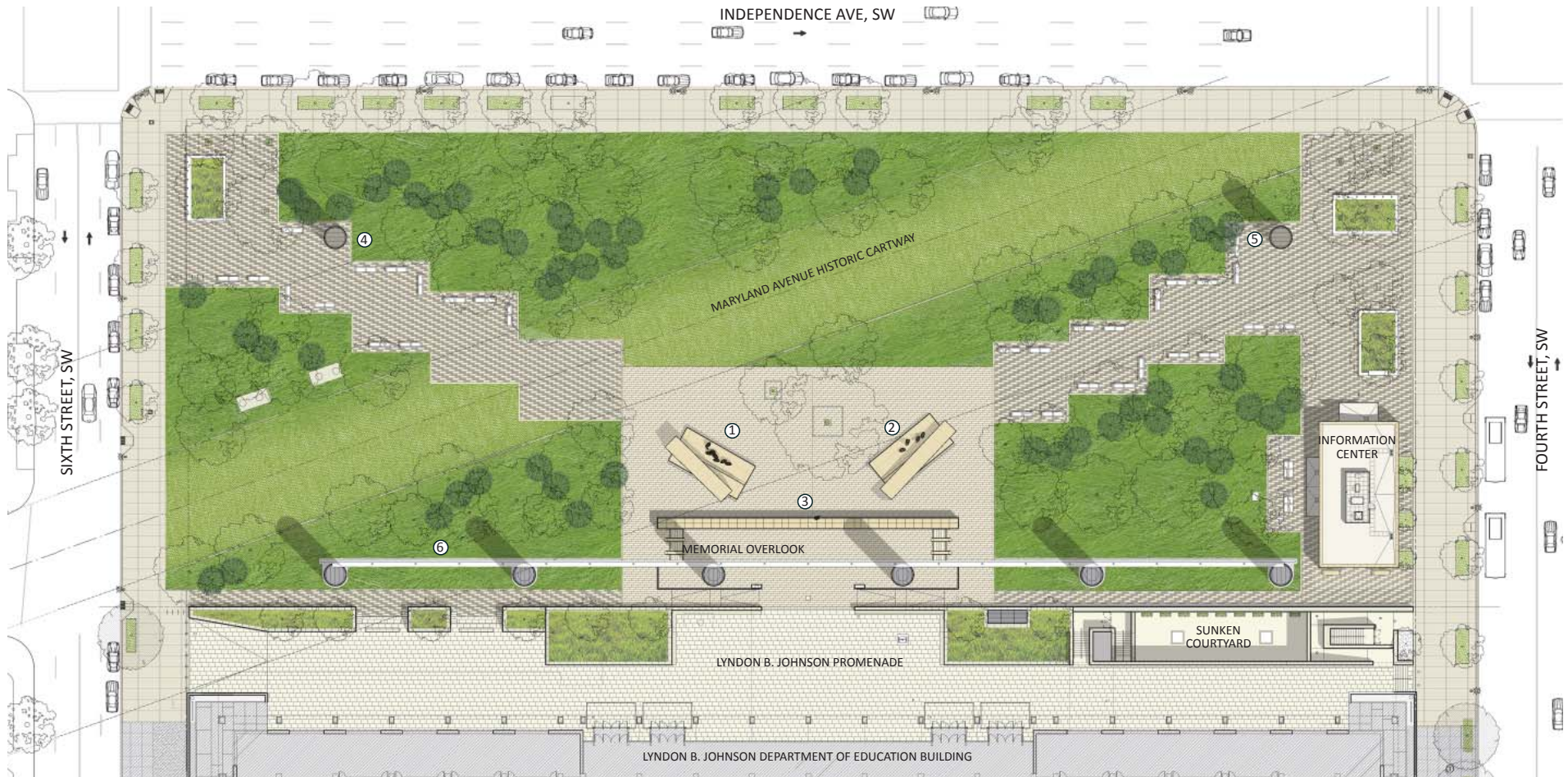
HORIZONTAL, VISUALLY-OPEN GROUNDPLANE THROUGHOUT

Canopy tree species are selected for their height and the limb height of their canopy above the ground, so as to ensure ready visual and physical accessibility to the entire Memorial park, and to create a visually open landscape. Understory tree plantings serve to create a sense of procession and increased differentiation from the rest of the memorial along the approach walkways.




GROUNDPLANE - 3.4





### GROUNDPLANE AND UNDERSTORY TREE PLAN

- |   |                  |
|---|------------------|
| ① GENERAL EISENHOWER MEMORIAL ELEMENT   | ④ WEST COLUMN    |
| ② PRESIDENT EISENHOWER MEMORIAL ELEMENT | ⑤ EAST COLUMN    |
| ③ YOUNG EISENHOWER STATUE               | ⑥ SOUTH TAPESTRY |

-  Groomed Lawn
-  Taller Lawn
-  Understory Trees



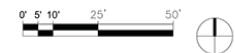
### 3.4 - GROUNDPLANE





## SITE PLAN

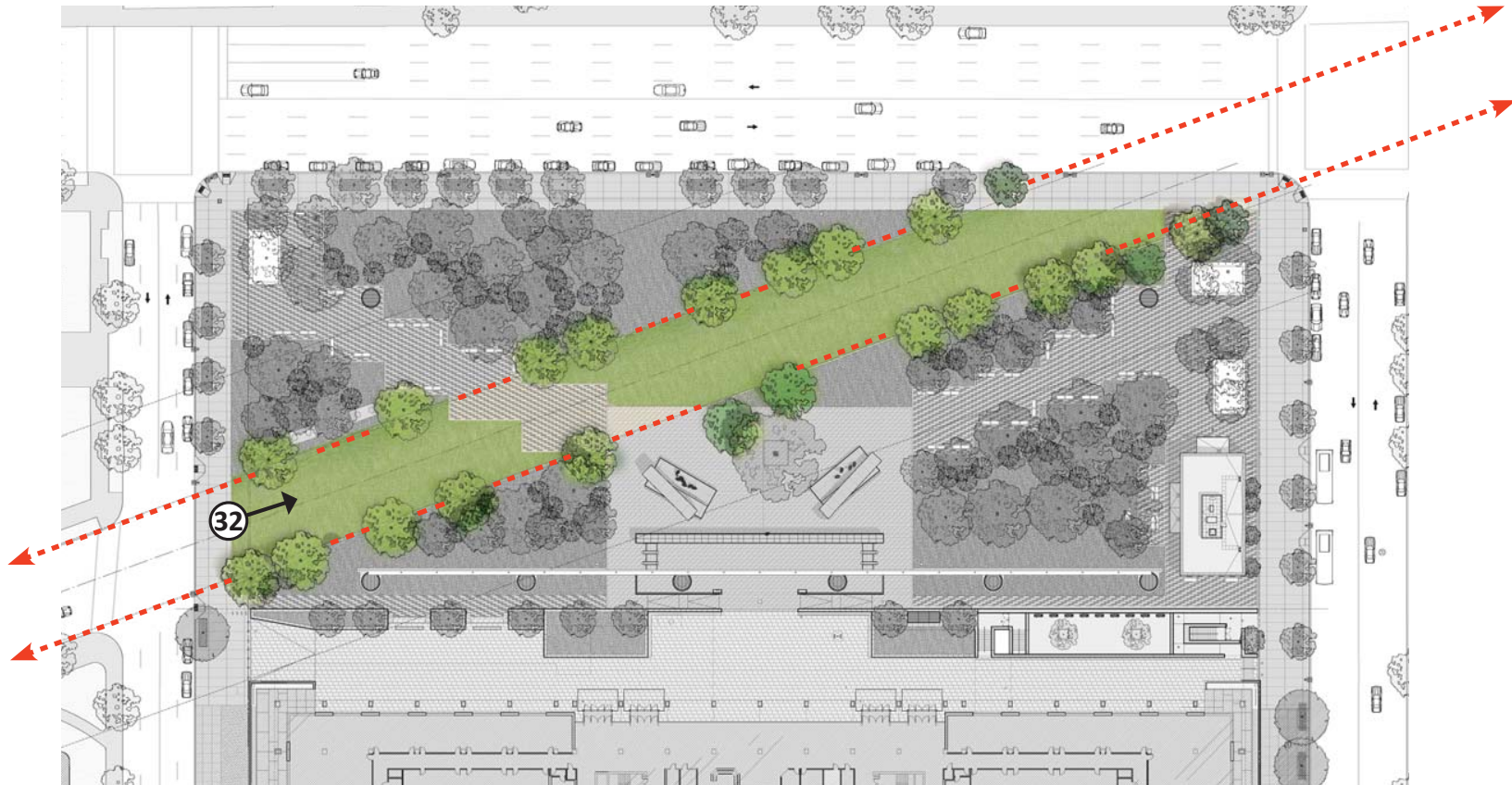
- |   |                  |
|---|------------------|
| ① GENERAL EISENHOWER MEMORIAL ELEMENT   | ④ WEST COLUMN    |
| ② PRESIDENT EISENHOWER MEMORIAL ELEMENT | ⑤ EAST COLUMN    |
| ③ YOUNG EISENHOWER STATUE               | ⑥ SOUTH TAPESTRY |



GROUNDPLANE - 3.4



### 3.5 MARYLAND AVENUE ALLÉE



← # VIEWSHED PAGE NUMBER

#### TREES ALONG MARYLAND AVENUE

Street trees are one of the most important spatial definers within cities. They are the soft liner within the volumes defined by the buildings and they frame views. They humanize the spaces and prevent them from becoming overly monumental. Maryland Avenue is framed by its street trees. The design team has carried this treeplanting concept through the Memorial park to provide continuity to the flow of space along the axis. The tree line is created and defined by the edge of larger groves rather than a traditionally spaced allée.

This creates a double reading of the allée. When viewed along its axis it will appear continuous because from this angle the canopies will visually overlap.

The removal of the vehicular paved street along Maryland Avenue will provide a unique opportunity to stand at rest on the axial center and look at the Capitol Dome. In most other circumstances in the city this type of view is only afforded while crossing a street or riding in a car.

### 3.5 - MARYLAND AVENUE ALLÉE





INSTITUTE FOR ADVANCED STUDIES - EINSTEIN DRIVE. PRINCETON, NEW JERSEY



HARVARD YARD - CAMBRIDGE, MASSACHUSETTS



THE LAWN - UNIVERSITY OF VIRGINIA



EISENHOWER'S HOMETOWN - ABILENE, KANSAS

MARYLAND AVENUE ALLÉE - 3.5

## EISENHOWER MEMORIAL

Gehry Partners • AECOM Joint Venture





VIEW ALONG MARYLAND AVENUE TOWARDS CAPITOL

3.5 - MARYLAND AVENUE ALLÉE





VIEW TOWARDS MEMORIAL LOOKING WEST