

## **EISENHOWER MEMORIAL**

**NATIONAL CAPITAL PLANNING COMMISSION**

SECTION 106 LIGHTING AND LBJ BUILDING PERIMETER SECURITY UPDATE

MEETING DATE: NOVEMBER 12, 2014



# TABLE OF CONTENTS

1.0	DESIGN RESPONSE SUMMARY
2.0	DESIGN OVERVIEW
3.0	LIGHTING DESIGN
4.0	LBJ BUILDING PERIMETER SECURITY





## DESIGN RESPONSE SUMMARY

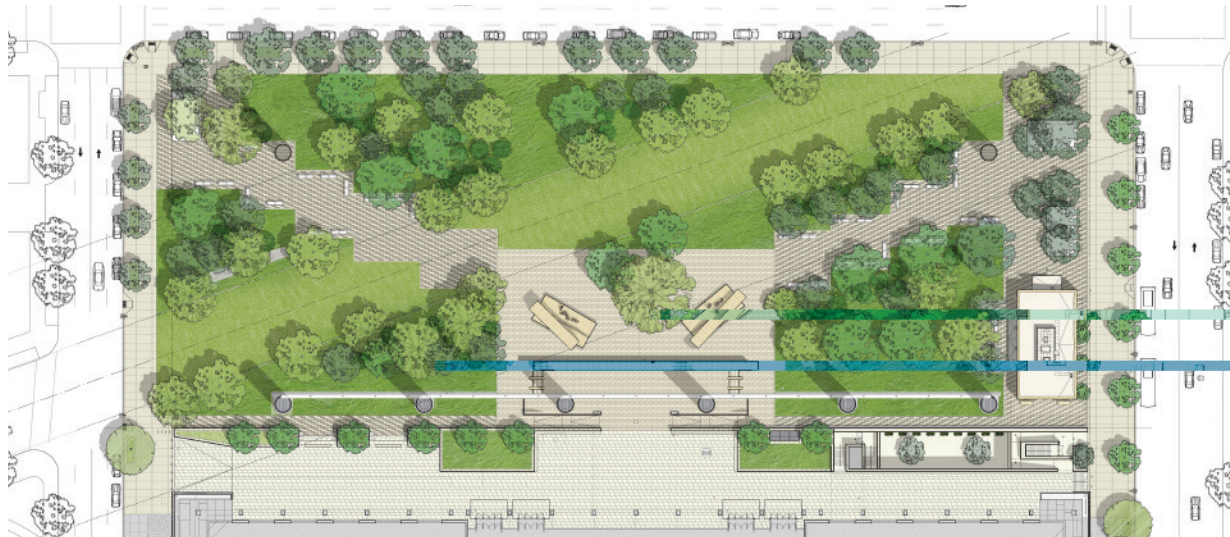


NOVEMBER 2014

The Memorial design has been refined to address the general planning related issues from the Commission Action dated October 2, 2014. The design team has met with NCPC staff on multiple occasions to review design options for pedestrian circulation, perimeter security at the LBJ Promenade, and a comprehensive review of the lighting design.

Below is a summary of the design revisions proposed.

- The overlook stair has been reduced in size and revised to eliminate the need for bollards.
- The terraced seating area at the northwest end of the LBJ Promenade has been modified to eliminate the need for bollards.
- The lighting design has been revised in response to the approved preliminary design.

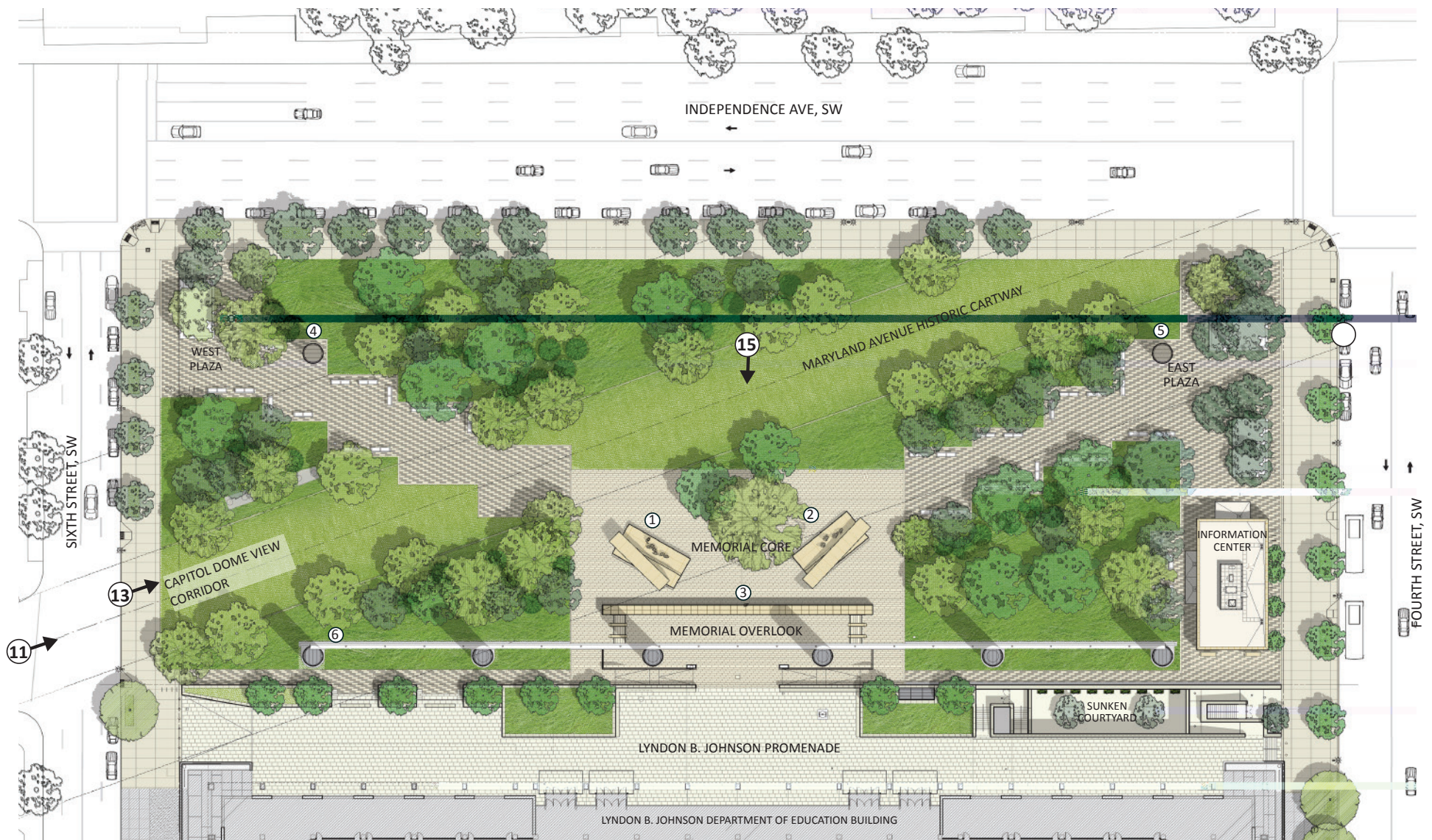


NOVEMBER 2014 DESIGN REVISIONS



AERIAL VIEW





- ① GENERAL EISENHOWER MEMORIAL ELEMENT
- ② PRESIDENT EISENHOWER MEMORIAL ELEMENT
- ③ YOUNG EISENHOWER STATUE
- ④ WEST COLUMN
- ⑤ EAST COLUMN
- ⑥ SOUTH TAPESTRY

← # VIEW PAGE NUMBER



SITE PLAN

## EISENHOWER MEMORIAL

Gehry Partners • AECOM Joint Venture

DESIGN OVERVIEW - 2.0





MEMORIAL AS FOCAL POINT OR ICON

The avenues of Washington D.C. masterplan terminate at focal points, which often exhibit the city's memorials. These nodes create a critical identity for the city, as the avenues create view corridors directly to the Memorial elements on a series of axes. During the day the memorials are highlighted by their placement within these nodes. However their hierarchy in relationship to their surroundings is actually even more accentuated at night where the lighting amplifies their presence. As the memorials become termini for the views around the city, the lighting of the memorials evokes the very nature of the masterplan's structure. They become the glowing icons of the nation's capital.



AVENUES AS VOLUMES OF LIGHT

Perhaps as critical to the perception of the memorials as the sculptures and buildings themselves, are the avenues that bind the city together. An avenue in this context affords the view of the icons that dot the urban plan, creating an axially intense foreground through which the Memorial can be viewed from a distance. During the day, these avenues create a spatial axis of view toward the memorials, often flanked by trees or adjacent buildings.

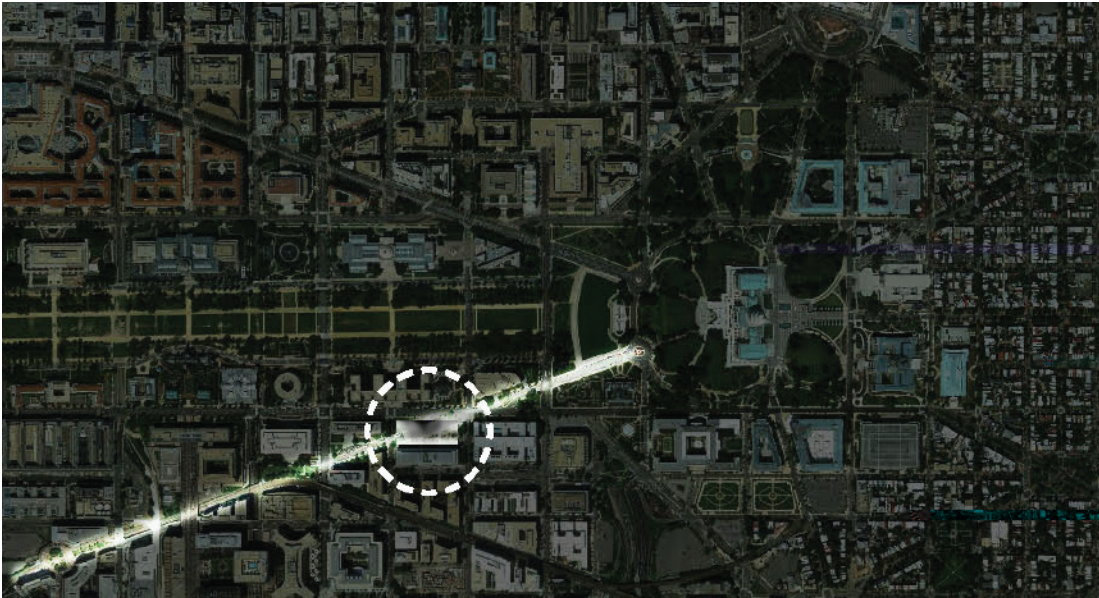
During the night these avenues become consistent corridors of illumination where the 'volume' of the street is filled with light. In counter balance with the icons, the avenue has a presence that is defined by its binding surfaces, the street surfaces and the adjacent facades. The termini of the avenues are defined by icons, whereas the avenues that bind them are defined by volume.



### 3.0 - LIGHTING DESIGN

## EISENHOWER MEMORIAL

Gehry Partners • AECOM Joint Venture

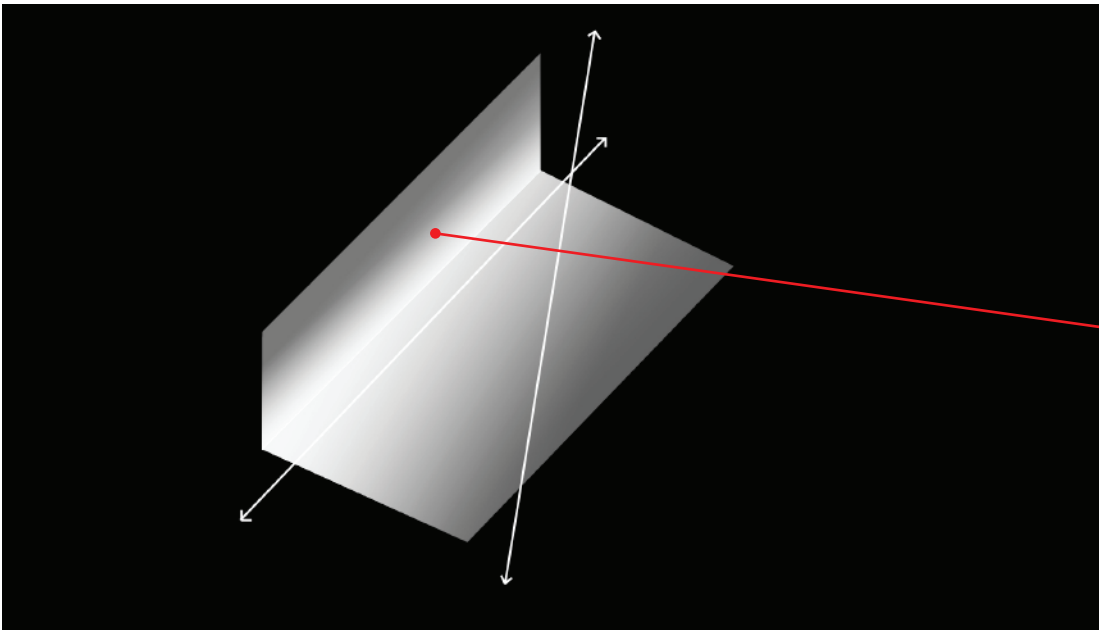


#### THE SITE AND ITS AVENUE AS AN URBAN ROOM

The site for the Eisenhower Memorial is a part of the network of avenues that bind the D.C. landscape. As a part of this network of avenues, the lighting concept responds to the Eisenhower Memorial as a volume of light. Just as the other avenues of the city are bound spatially by the roadway surface and the surrounding buildings, the Eisenhower Memorial uses the tapestry elements, Memorial blocks, and horizontal landscape plane as its binding lighting elements.

The lighting enhances the context that is embraced by the surfaces of the Memorial elements as opposed to lighting the pieces of the Memorial as individual objects or icons. This approach is more in keeping with the contextual relationship of the Eisenhower Memorial to its urban surroundings.

The lighting within the site is made up of continuous uplighting for the Memorial elements, and a more accented, organically distributed downlighting for the rest of the Memorial site. This creates a horizontal and vertical layering of light through the site, creating a place that is at once a Memorial, an avenue, and a landscape.

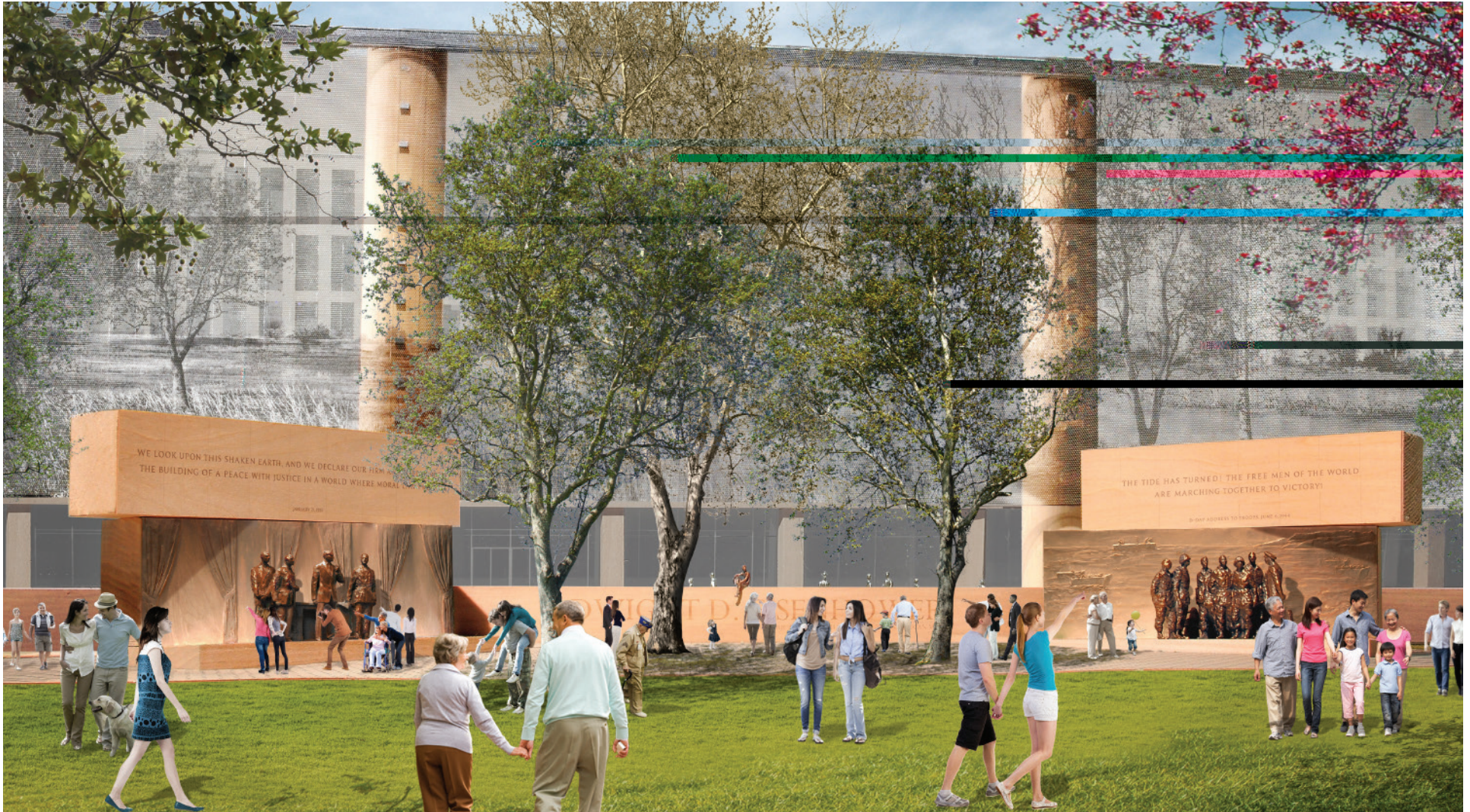


The Memorial uses the Tapestry, Memorial elements, and the horizontal landscape plane as its binding lighting elements.



TAPESTRY MOCK-UP  
ILLUMINATED AT NIGHT





### SITE LIGHTING

The lighting concept is a horizontal layering of light. This layering allows the light to reinforce the transition from human scale to the larger Memorial elements. In some cases, this layering keeps the illumination at the surfaces of the pathways themselves to reduce the glare of light as one looks at the Memorial and surrounding contexts and iconic views. At an intermediate height, the lighting allows for the

subtle illumination of Memorial objects or landscape that is above human height. Along with the pathway lighting, this layer creates a sense of intimacy that is crucial in an urban context dedicated to a memorial. The upper layers of lighting will illuminate the tapestry. The overall intent of layering the lighting is to make illumination feel like it is originating from the areas around the Memorial objects themselves, similar to a group of people drawn to a candle in the center of an otherwise a dark room.

### 3.0 - LIGHTING DESIGN

## EISENHOWER MEMORIAL

Gehry Partners • AECOM Joint Venture





### MEMORIAL CORE NIGHT VIEW

As the central glowing Memorial elements are approached, the lighting becomes more continuous and more densely layered. A continuous linear uplight helps to define each element, but in different ways. The linear uplighting of the tapestry floating above provides the backdrop for the entire site and fades as it reaches the top of the tapestry surface blending into the night sky above. Another continuous uplight subtly illuminates

the Eisenhower inscription wall. This uplight is of a human scale, and helps to ground the area immediately underneath the tapestry as a part of the Memorial core's glowing center. The Memorial elements on the right and left also maintain continuous linear uplighting to help bind them to both the tapestry and the inscription wall, but they utilize it as a backlight to help reinforce the silhouette of the statues standing in front

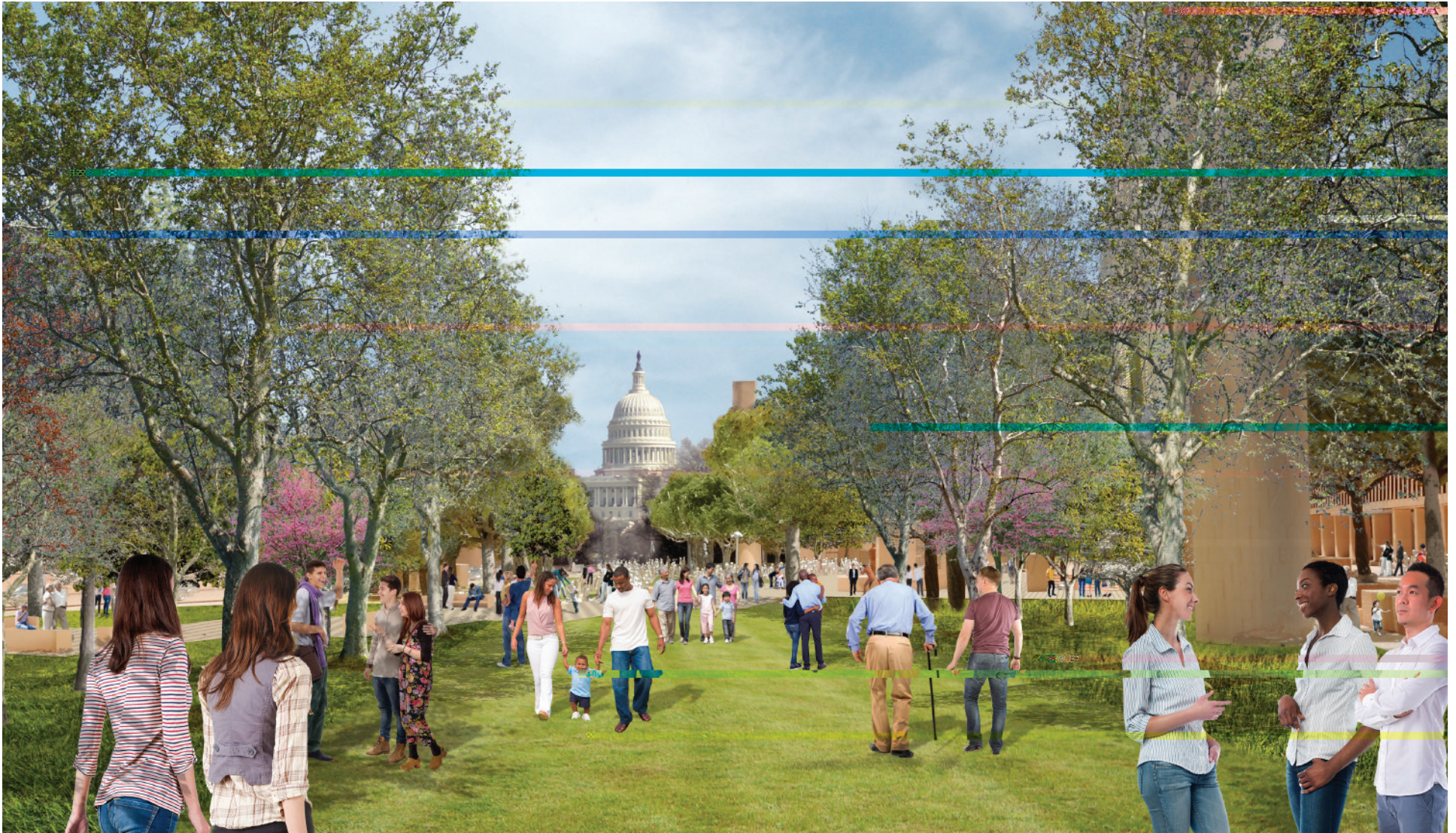
as well as to bring out the subtle textures of the bas relief walls. The final layers of lighting in this view are for the statues themselves. The statues are illuminated specifically from the front, with the light focused specifically on the sculptural figures and nothing else. The statue of young Eisenhower is illuminated differently. This statue is lit from above and behind creating a subtle edge glow when seen from this view.

## EISENHOWER MEMORIAL

Gehry Partners • AECOM Joint Venture

### LIGHTING DESIGN - 3.0





VIEW ALONG MARYLAND AVENUE TOWARDS CAPITOL





NIGHT VIEW OF MARYLAND AVENUE VIEWSHED TOWARDS CAPITOL

#### MARYLAND AVENUE NIGHT VIEW

The lighting concept allows the visual progression of Maryland Avenue axis through the site. This corridor will allow for a view to the Capitol to remain unimpeded from issues such as glare or lighting of too large a scale. Keeping the light sources close to the ground at the pedestrian level allows the eye to wonder beyond the site to surrounding area, and on to the Capitol itself.

As one moves within the site along the Maryland Avenue axis, the layering of light begins to be recognized fully. Although the Maryland Avenue view to the Capitol remains distinct, the green space that defines our site is illuminated differently from a typical avenue or street. As a nod to the fact that the axis continues through the site; we light it. However, the light is

directed downward to the natural greensward surface. Instead of ambient street poles that would otherwise distract the view upward to the Capitol, the lighting within the site quietly falls on the ground, with glare from the light fixtures kept to a minimum.



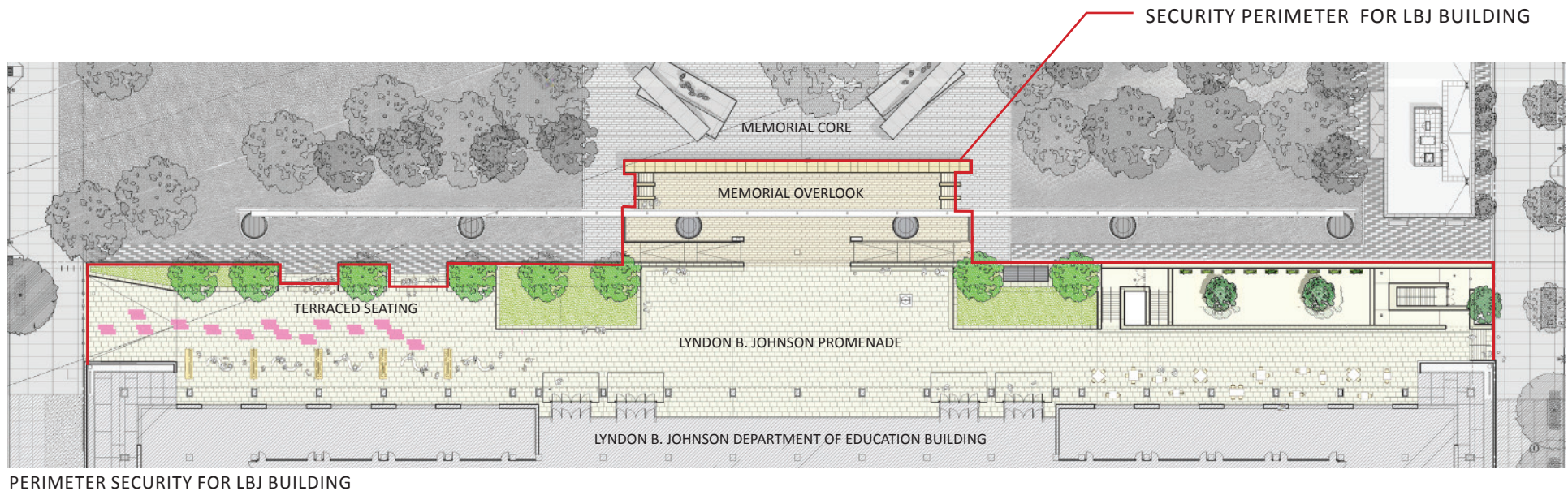


#### 4.0 LBJ BUILDING PERIMETER SECURITY

The Lyndon B. Johnson Promenade serves as a separate and distinct forecourt to the Department of Education building. The Promenade provides a new grand entrance to the north facade of the building elevated above the Memorial. The Promenade is elevated above the Memorial site by a change of grade.

A 50-foot security perimeter buffer has been established on the northern side of the Lyndon B. Johnson Department of Education. The perimeter is formed by a retaining wall at the northern edge of the LBJ Promenade and fortified by security bollards at the eastern and western Promenade entries from Fourth and Sixth Streets, respectively. The bollards and knee walls, and associated foundations, are designed to be capable of resisting a two and half ton truck travelling at 30 miles per hour.

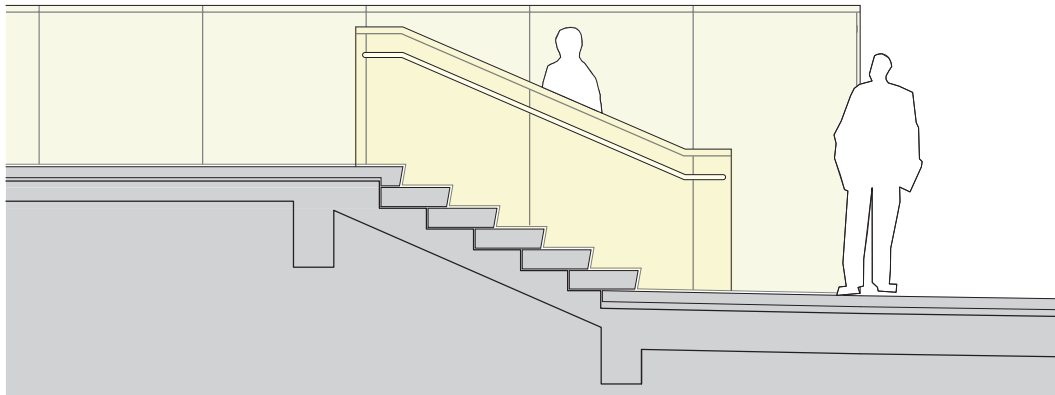
The overlook stairs were modified to eliminate the need for bollards by shortening the stairs along the east and west side, in front of the tapestry columns, and adding two structural walls, clad in stone. The terraced seating along the northwestern edge of the LBJ Promenade has been revised to eliminate the need for bollards by adding a structural wall at the top of the seating. The wall will be clad in precast architectural concrete similar to the Promenade planters.



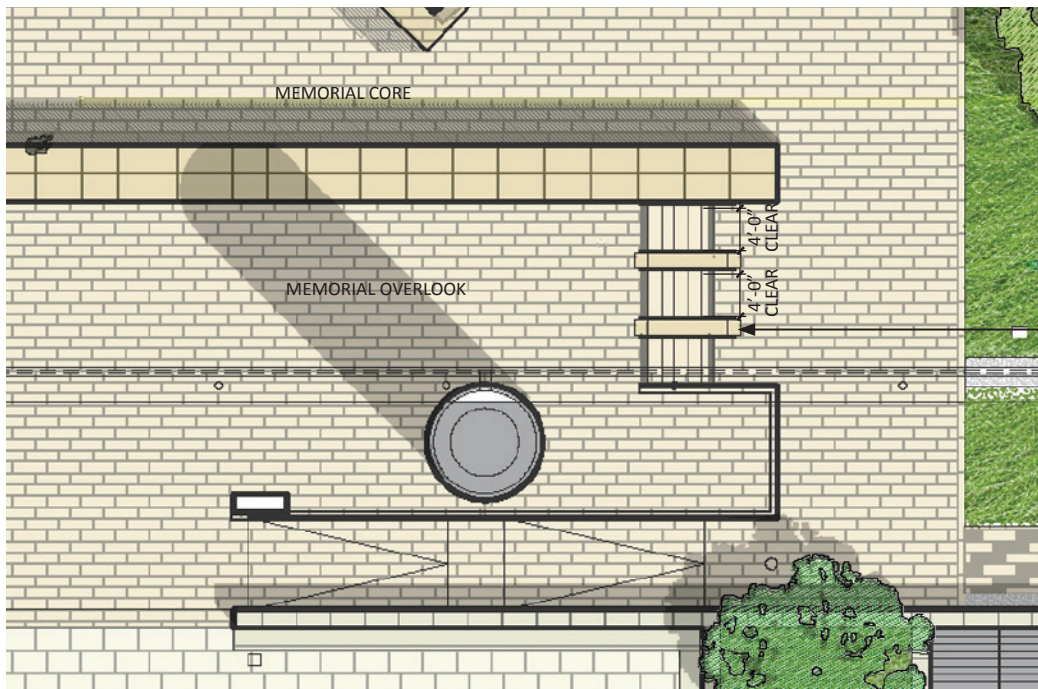
## MEMORIAL OVERLOOK STAIRS

The overlook stairs were modified to remove the need for bollards in response to the NCPC comments. In lieu of bollards, a structural wall, clad in stone, was added to the stairs. The stone wall is sloped along the top, and will support the handrails.

The stairs were also shortened in front of the tapestry columns by extending the overlook platform. This area is supported by a structural clad in stone knee wall.



SECTION THROUGH OVERLOOK STAIR



OVERLOOK STAIR PLAN DETAIL

## 4.0 - LBJ BUILDING PERIMETER SECURITY



