

## **EISENHOWER MEMORIAL**

**NATIONAL CAPITAL PLANNING COMMISSION**

SUPPLEMENTAL SUBMISSION FOR PRELIMINARY DESIGN REVIEW

SUBMISSION DATE: AUGUST 29, 2014

MEETING DATE: OCTOBER 2, 2014

**EISENHOWER MEMORIAL**

Gehry Partners • AECOM Joint Venture



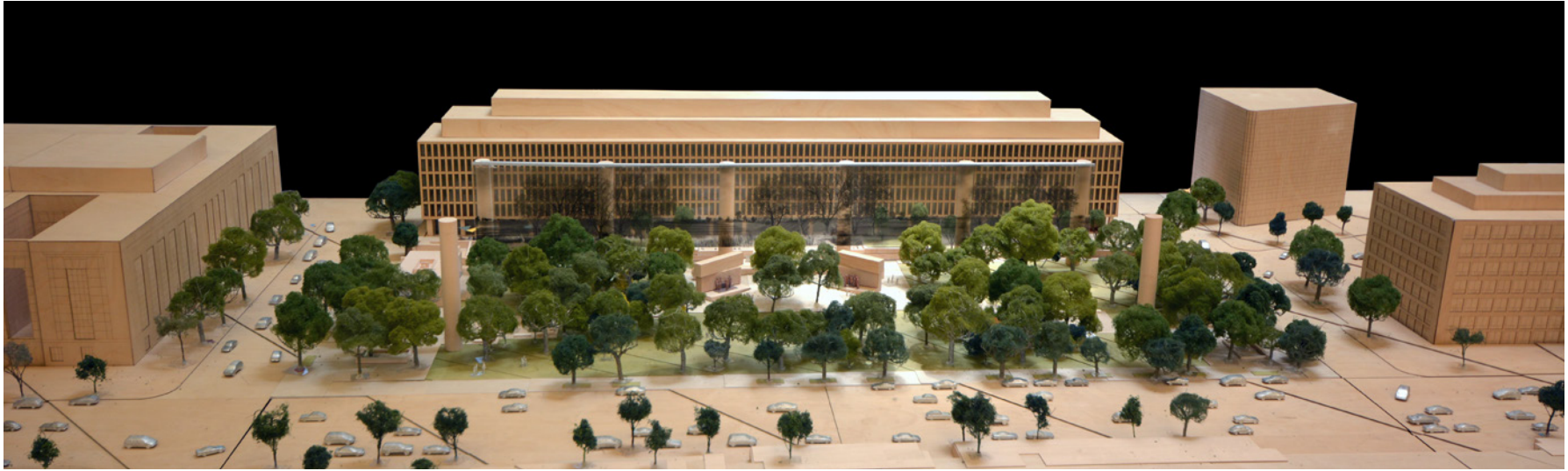
# TABLE OF CONTENTS

## 1. EXECUTIVE DESIGN SUMMARY

- 1.1 Executive Design Summary
- 1.2 Recap of Design Evolution
- 1.3 Summary of NCPC Design Principles
- 1.4 Response to NCPC General Planning-Related Issues

## 2. CURRENT DESIGN

- 2.1 Overview of Design Response
- 2.3 Urban and Pedestrian Experience
- 2.3 Response to NCPC Design Principles



The proposed Eisenhower Memorial site is a four acre site in the Southwest district of Washington D.C. Located on Independence Avenue and Maryland Avenue, bound by 4th and 6th Streets SW, and Lyndon B. Johnson Department of Education building, the site has a unique urban situation unlike any other major Memorials. The site is directly on the Maryland Avenue axis, an important historical corridor with a viewshed to the U.S. Capitol.

To address the urban scale of this large four acre site and create an autonomous Presidential Memorial experience, the design proposes a unique commemorative art element with a stainless steel tapestry supported on large columns depicting scenes from Eisenhower's home in Kansas. The colonnade and tapestry create an urban room within the scale of the surrounding precinct and frame the entire site to distinguish the Memorial in a unified space. The columns are carefully arranged along Maryland Avenue running through the site, to frame the view to the Capitol dome.

At the center of the project site is the contemplative Memorial space, where Eisenhower's legacy unfolds in an intimate setting. Heroic free standing sculptures, bas reliefs, and quotes celebrate Eisenhower's contributions to our nation as the 34th President and the Supreme Commander of the Allied Forces. Eisenhower as a young man is seated on a wall, looking towards his future achievements.

Eisenhower's humility, values, and achievements are what set him apart...so these are what will set the monument apart.

***This is a monument to his ideas. To the words that he left with us. To the principles that guided his decisions and fueled his remarkable achievements.***

The treatment of Maryland Avenue is a significant organizing component of the project. Maryland Avenue will be closed to street traffic, allowing the disparate parcels to transform the area into a inviting green space. Maryland Avenue will be restored to its original position and will be framed vertically with an allée of mature trees that in turn frame the Capitol dome.

Eisenhower Square is a memorial conceived as an urban park in an area of the city greatly needing a revitalized pedestrian experience. The park is designed to guide visitors through key view corridors across the site. The landscape design is distinguished by tree species reminiscent of the Midwest that provide ample shade and definition to the street edges and open spaces in the park.

To the south is an elevated area in front of the Lyndon B. Johnson building that becomes a new forecourt for the

Department of Education and a pedestrian Promenade with programming that supports outreach, outdoor seating and gathering areas.

Proof of concept mock-ups were created for the tapestry to demonstrate artistic quality, intent, and transparency established for this commemorative art element. The tapestry has technically developed since 2011 when the mock-ups were initially created. The engineering and material testing has been found by NCPC Commission to demonstrate the tapestry meets the Commemorative Works Act durability criteria.

Since the NCPC Commission meeting in April of 2014, the design team has made significant revisions to the position and scale of the Memorial tapestry elements. The design features including the tapestry, sculpture, and quotations -- in addition to the landscape design, are the result of rigorous research in response to agency review comments. Each element is designed to create the most effective and powerful experience for visitors. The design team has met with NCPC staff on multiple occasions to review the proposed revisions. The resulting Dwight D. Eisenhower Memorial design has been revised to satisfy the goals of the seven design principles established for this site in 2006 by the National Capital Planning Commission to preserve and enhance the unique character of this site and establish a new green space within the context of L'Enfant's masterplan for Washington D.C.

## 1.1 - EXECUTIVE DESIGN SUMMARY

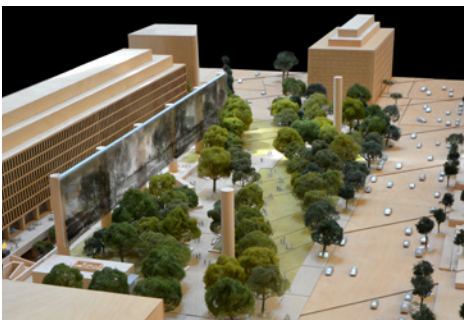




**TREE ALLÉE**  
Trees line the historic Maryland Avenue cartway, framing the Capitol vista.



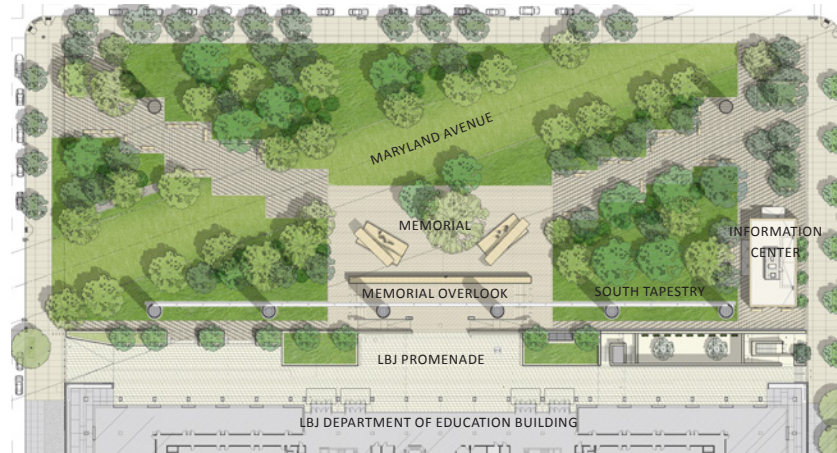
**TAPESTRY MOCKUP**  
The unique qualities of the stainless steel tapestry create a legible image while maintaining a level of transparency.



**TAPESTRY & COLUMNS**  
The unique defining element of Eisenhower square. The northern columns mark the park entry paths leading to the center of the Memorial.



**MEMORIAL CORE**  
The commemorating area of the site, where the public can view Eisenhower's legacy in a shaded intimate setting.



**STATUES AND RELIEFS**  
General and President Eisenhower are depicted with statues on the Memorial blocks that also include bas reliefs behind the figures.



## APRIL 2014 DESIGN SUMMARY OF NCPC COMMISSION ACTION

The Memorial design was reviewed by the NCPC Commission in April 2014 for preliminary review. The Commission found the design inconsistent with three of the seven design principles listed below and requested the design be modified to meet the design principles.

*Design Principle 1: Preserve Reciprocal views to and from the U.S. Capitol along Maryland Avenue SW.*

*Design Principle 4: Reflect the L'Enfant Plan principles by shaping the Memorial site as a separate and distinct public space that complements the Department of Education Headquarters and other surrounding buildings.*

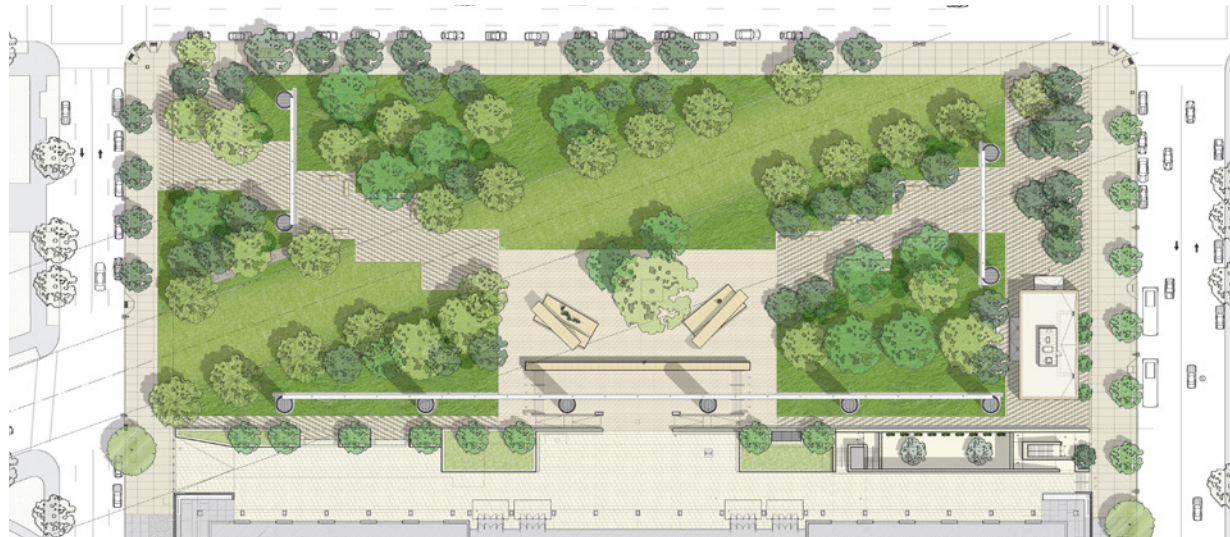
*Design Principle 6: Respect the building lines of the surrounding rights of way and the alignment of trees along Maryland Avenue.*

The Commission also requested the design team address some general planning issues including: pedestrian circulation, perimeter security, lighting, public space, and the Memorial information center.

The Commission found that the results submitted to NCPC in the *Tapestry Engineering and Testing Data Summary* dated February 5, 2014 meets the Commemorative Works Act durability criteria.



APRIL 2014 DESIGN



### 1.2 - RECAP OF DESIGN EVOLUTION

## EISENHOWER MEMORIAL

Gehry Partners • AECOM Joint Venture

### APRIL 2014 DESIGN



SEPTEMBER 2014 - REVISED DESIGN

## EXECUTIVE SUMMARY OF DESIGN REVISIONS

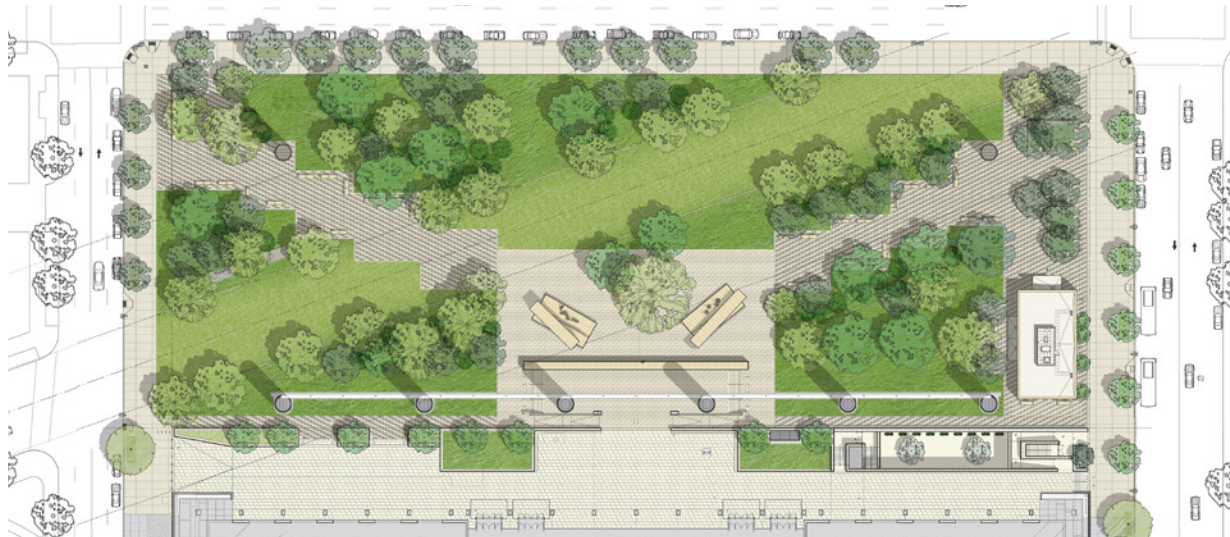
The Memorial design has evolved in response to the April 2014 NCPC Commission Action. The design changes specifically address the three design principles the Commission found inconsistent with the previous submitted design.

**Design Principle 1: Preserve reciprocal views to and from the U.S. Capitol along Maryland Avenue SW.** The revised design has widened the view corridor from 95' to 135'. This design creates a more proportionally *horizontal* framed view of the U.S. Capitol.

**Design Principle 4: Reflect the L'Enfant Plan principles by shaping the Memorial site as a separate and distinct public space that complements the Department of Education Headquarters and other surrounding buildings.** The design revisions eliminate the East and West tapestries allowing the influence of the adjacent buildings to define and unify the site.

**Design Principle 6: Respect the building lines of the surrounding rights of way and the alignment of trees along Maryland Avenue.** The proposed northern singular columns are set back more than 47' from the Independence Avenue Right of Way and are fully located within the planes of the adjacent building facades.

The design team has met with NCPC staff on three occasions to review the proposed changes. The staff have indicated that the proposed revisions clearly comply with two of the three remaining design principles. The design team will continue to work with staff to address remaining planning issues in the Commission Action.



SEPTEMBER 2014 DESIGN



## DESIGN SUBMITTED TO NCPC IN DECEMBER 2011 AND INCLUDED IN THE MEMORANDUM OF AGREEMENT - MARCH 2012

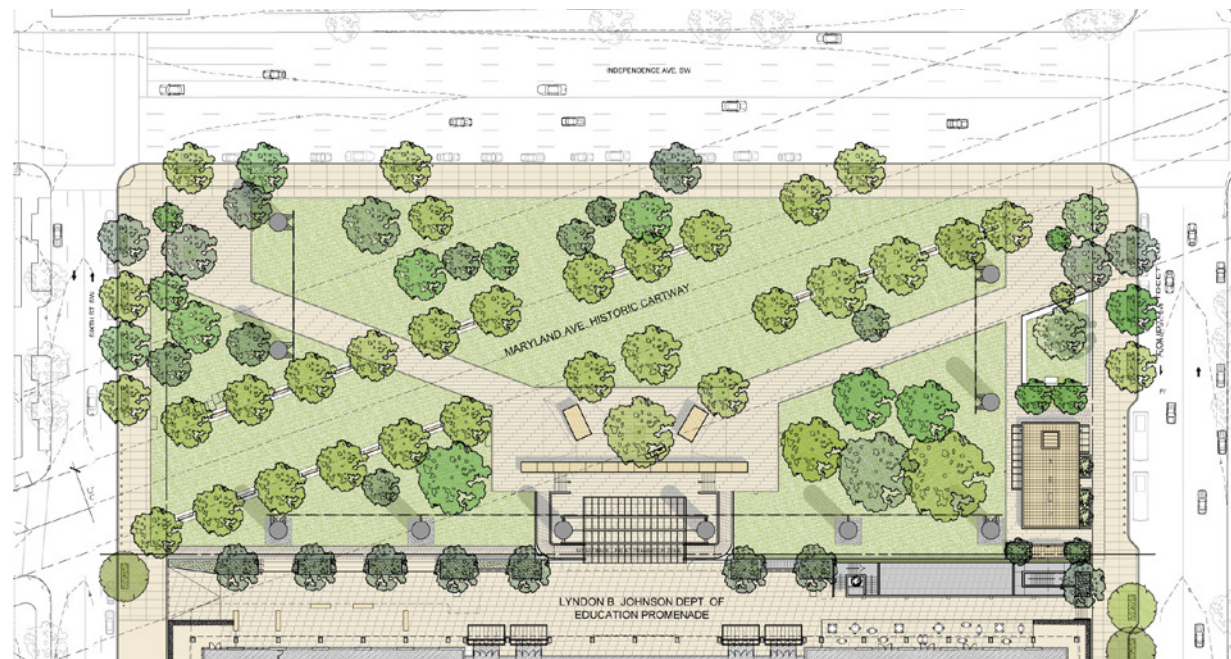
The December 2011 design submitted to NCPC was attached to the Memorandum of Agreement signed by the signatories on March 1, 2012. The Memorial design presented in October 2011 evolved from the December 2011 design in the following key aspects:

1. The column & tapestry relationships were modified slightly.
2. The Memorial elements portraying the Eisenhower legacy as President and General have been centered on the site and LBJ Building
3. Paving layout was modified to better address the Memorial and the primary site entry zones.
4. Landscape and groundplane development.
5. Information Center planning and layout progress.

The Memorandum of Agreement was updated in June 2013.



DECEMBER 2011 DESIGN



### 1.2 - RECAP OF DESIGN EVOLUTION

## 1.3 - SUMMARY OF NCPC DESIGN PRINCIPLES

## 1.3 - SUMMARY OF NCPC DESIGN PRINCIPLES

The Eisenhower Memorial has been shaped and guided by the seven design principles adopted by NCPC for the 2006 site selection. The design principles created for the Eisenhower Memorial are intentionally subjective and open to interpretation. In addition, the design principles often overlap or contradict one another and the competing priorities must be balanced. It is the strong assertion of the Eisenhower Memorial design team that the revised Memorial design complies with and fulfills the seven (7) principles, as outlined below.

### ***1. Preserve reciprocal views to and from the U.S. Capitol along Maryland Avenue, SW.***

The Memorial design strengthens and preserves the reciprocal views to and from the U.S. Capitol along Maryland Avenue, SW. The current site configuration of the roadway and plaza vegetation allow some views of the U.S. Capitol from active crosswalks within Maryland Avenue, but overgrowth of some trees partially obscures views of the Capitol, including the Dome. The Memorial design removes the existing overgrowth and creates an allée of trees within the park landscape to visually strengthen the views through the site. The design strategically places the Memorials commemorative element - the tapestry and supporting columns in locations that preserve and frame the views. Additionally, the re-alignment of Maryland Avenue to its historical location will help focus sight lines through the site to the Capitol and provide a green focal point for views from the Capitol.

The columns have been reconfigured in the proposed design, increasing the viewshed to the Capitol from 95' to 135'. The resulting column configuration creates a proportionally *horizontal* framed view of the Capitol Dome. The horizontal view of the Capitol is balanced by the existing buildings that serve as the street wall along Maryland Avenue, including the National Museum of the American Indian.

### ***2. Enhance the nature of the site as one in a sequence of public spaces embellishing the Maryland Avenue vista.***

The Memorial design enhances the site to create a real public space along the Maryland Avenue vista. The Memorial transforms the existing disparate and disjointed plaza into a green park setting more in keeping with L'Enfant squares. The Memorial includes a central core of commemorative elements and provides direct visual lines to other public spaces along Maryland Avenue. To the Southwest, Maryland Avenue links the Memorial to Reservation 113, where Maryland and Virginia Avenues intersect. To the Northeast, Maryland Avenue links the Memorial to the Mall and the U.S. Capitol Grounds.

The NCPC Commission found the Memorial design in compliance with this design principle.

### ***3. Create a unified memorial site that integrates the disparate parcels into a meaningful and functional public gathering place that also unifies the surrounding precinct.***

The Memorial transforms the entire site into a commemorative park to “enhance the nature of the site” as a green space that combines and “integrates the disparate parcels into a meaningful and functional public gathering space” and provides an attractive urban park with an inviting central feature “that also unifies the surrounding precinct.” The current plaza and park land, while open, is spare and uninviting, and offers few visitor amenities. The Memorial will offer educational, artistic, and natural experiences, as well as public gathering space that are part of a cohesive site. It will also unify the surrounding precinct by incorporating the Department of Education building into its design through the creation of the LBJ Promenade, which will activate the forecourt to this building. By realigning Maryland Avenue to its historical location, the Memorial design is embellished by the diagonal street.

Eisenhower’s legacy has a strong relationship to the surrounding institutions which unifies the Memorial thematically within the precinct. The revised design allows the adjacent buildings to further unify the site, strengthening the compliance with this design principle.

### ***4. Reflect L'Enfant Plan principles by shaping the Memorial site as a separate and distinct public space that complements***

***the Department of Education headquarters and other surrounding buildings.***

As a singular green square created by the closing of Maryland Avenue to vehicular traffic at the intersection with Independence Avenue, the proposed design “reflects L'Enfant Plan principles by shaping the Memorial site as a separate and distinct public space” within its orthogonal context. The urban park setting for the Memorial “complements the Department of Education headquarters and other surrounding buildings ” by offering a green respite to the large buildings and adjacent parcels.

The revised Memorial design, with the removal of the east and west tapestry allows the adjacent buildings to define and unify the site. The revised colonnade and tapestry configuration re-orders the urban space, addresses the scale of the site, and distinguishes this unique urban park as a Presidential Memorial. Viewsheds to the Department of Education headquarters were preserved from Independence Avenue by adjusting the colonnade configuration. The Memorial design composition is centered on the LBJ building and creates a strong planning and visual relationship between the Memorial and the LBJ building. The aesthetic mock-up of the tapestry successfully demonstrated the intent to incorporate transparency into the artistic composition. Transparency is a key design feature of the Kansas landscape on south tapestry which will allow the LBJ building to define and enclose the park space.

Additionally, the Lyndon B. Johnson Promenade provides a grander entrance to the building, elevated above the Memorial. The Promenade also creates a new base for the building with amenities to serve the occupants of the Department of Education as an integral neighbor to the Memorial.



**5. Respect and complement the architecture of the surrounding precinct.**

By taking its scale and height cues from adjacent buildings, the Memorial tapestry “respects and complements the architecture of the surrounding precinct.” The colonnade and tapestry height were established in direct response to the LBJ building. The Memorial elements will consist of durable building materials, including stone, that are consistent with the neighboring buildings.

The surrounding precinct will be complemented with the addition of the Eisenhower Memorial. Rigorous studies that balance the proportional relationships and placement of the central core and colonnades and tapestry elements, along with the preservation and development of the Maryland Avenue vistas, will ensure that the Memorial will complement the surrounding architecture.

The NCPC Commission has found that the modern and innovative approach of the design meets the design intent of this principle.

**6. Respect the building lines of the surrounding rights-of-way and the alignment of trees along Maryland Avenue.**

Throughout the city of Washington, building facades are aligned with the rights-of-way established by the L’Enfant Plan. As a result, building lines and rights-of-way in Washington are one and the same. However, the Southwest precinct is unique in its character from other parts of the city, with the mid-century buildings offering deep setbacks. The revised northern singular columns are placed fully within the planes of the adjacent building facades, establishing the Eisenhower Memorial is consistent with the L’Enfant Plan and fully “respects the building lines of the surrounding rights-of-way.” The proposed design will also enhance the immediate neighborhood surrounding the Memorial site and will provide an important hinge point of the evolving and future Southwest precinct as this area redevelops.

The interface of the Memorial’s ground plane to the streetscape plays a large role in the context of the overall Memorial design. Because the Memorial elements are not a building, *per se*, the interaction with the street takes on a different relationship. The overall composition of the Memorial Design is based on proportional studies to find the ideal placement of each Memorial element. The Memorial elements near the rights-of-way for each street are treated differently due to the particular geometry of the site.

Through variable lawn treatments and the diagonal placement of street trees, the Memorial “respects the alignment of trees along Maryland Avenue.” The Memorial design incorporates a new allée of street trees along the realigned historic cartway of Maryland Avenue. This treatment strengthens this segment of Maryland Avenue from 4th street to 6th street and provides continuity along the Avenue as it cuts across the Southwest neighborhood.

**7. Incorporate significant green space into the design of the memorial.**

The extensive use of trees and lawn area will “incorporate significant green space into the design of the Memorial.” The Memorial will increase the number and quality of trees, replacing immature or under-developed trees with significantly more robust and mature trees. The Memorial will improve root systems, soils, and drainage to enable the new trees to flourish. The amount of green space would increase over existing conditions, resulting in almost 1.8 acres of additional landscaped area at the site. Sustainability principles have been respected in the planting design and an successional ecological approach will maintain continuity and replacement of trees and the development of the groundplane over time have been planned for in the design.

The revised design maintains the significant green space that the Commission found consistent with this principle.

## 1.4 RESPONSE TO NCPC GENERAL PLANNING-RELATED ISSUES

### CORRECTED COMMISSION ACTION APRIL 3, 2014

**1. Pedestrian Circulation:** The proposed circulation is too narrowly focused on providing access from the site corners to the Memorial core and needs to take into consideration likely circulation patterns along Maryland Avenue and midblock from Independence Avenue.

**2. Perimeter Security:** The proposed bollards along LBJ Promenade should be eliminated, particularly those located at the base of the Memorial overlook, or modified in design and spacing to maintain the openness of the Promenade and avoid unnecessary obstructions to pedestrian circulation.

**3. Lighting:** As a commemorative work located within the urban fabric of the city, the design of the Memorial lighting should be informed by lighting at other similarly situated public spaces and must not diminish the nighttime prominence of the U.S. Capitol Building along the Maryland Avenue viewshed.

**4. Public Space:** The program and landscape plan should delineate areas primarily intended to serve the commemorative experience, and areas that contribute to broader public open space use.

**5. Memorial Information Center:** The program should remove the Memorial Information Center from the site as it is inconsistent with the site guidelines considered for this specific site as set forth in the Memorials and Museums Master Plan.

**1. DESIGN RESPONSE FOR Pedestrian Circulation:** The design team will work with NCPC staff to satisfy pedestrian circulation concerns. See pages 14 through 22 for the design intent of the pedestrian experience.

**2. DESIGN RESPONSE FOR Perimeter Security:** The design team will work with GSA to review the security recommendations of the NCPC staff. The design team has no objection to modifying the design.

**3. DESIGN RESPONSE FOR Lighting:** As the design progresses the design team will work with NCPC staff to demonstrate the design respects the nighttime hierarchy for museums, memorials, and other prominent features on the National Mall, while adding to the richness of Washington D.C. with the addition of a new Presidential Memorial. The lighting will respect the visual prominence of the U.S. Capitol as the focal point in the Maryland Avenue view corridor.

**4. DESIGN RESPONSE FOR Public Space:** The commemorative area for the Memorial is at the center of the site, differentiated by paving materials and includes the sculptures, bas reliefs and inscriptions of President and General Eisenhower as well as the young Eisenhower statue. The remainder of the site is a public park and includes social gathering areas, landscaping, and urban plazas and promenades.

**5. DESIGN RESPONSE FOR Memorial Information Center:** The National Park Service requires the facility in the design as it is necessary for the proper operation and maintenance of the Memorial.

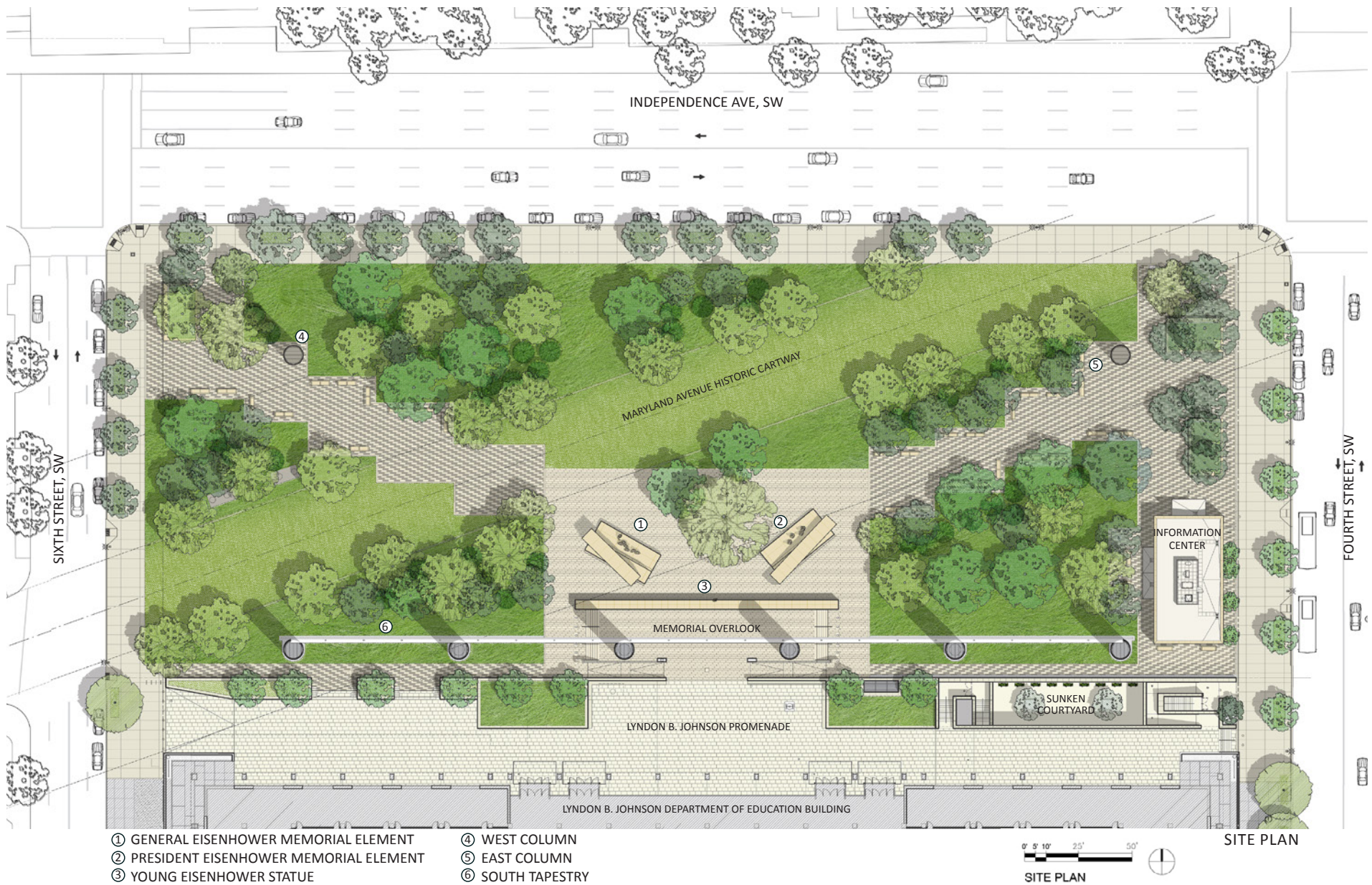
## SECTION 2: OVERVIEW OF DESIGN RESPONSE

This section provides a supplemental overview of the Memorial revised design proposed in response to the NCPC Commission meeting in April 2014. The design revisions are primarily limited to the tapestry and colonnade configuration on the site and are documented in this section.

The design intent for the Eisenhower Memorial remains the same as the *Submission for Preliminary Design Review* dated February 28, 2014 for the following areas of the project:

- Memorial Core
- Landscape Design
- Information Center
- Lyndon B. Johnson Promenade
- Lighting Design
- Signage and Wayfinding

The design team anticipates further updates and minor refinements to the design to address the agency general planning comments received in April, and additional feedback we will receive from CFA and NCPC in response to this revised design proposal.



## 2.1 - OVERVIEW OF DESIGN RESPONSE

### EISENHOWER MEMORIAL

Gehry Partners • AECOM Joint Venture





AERIAL VIEW - The design revisions eliminate the East and West tapestries, allowing the influence of the adjacent buildings to help define and unify the site.

## 2.2 URBAN PARK AND PEDESTRIAN EXPERIENCE

The Eisenhower square will be experienced as a public realm open to three sides: 4<sup>th</sup> and 6<sup>th</sup> Streets and Independence Avenue SW. An ample setting for the Department of Education headquarters in the Lyndon B. Johnson building is provided on the south frontage with an urban pedestrian promenade carried the length of the building.

The square is developed as an active urban park, a green space with trees and a grassy ground plane with broad walkways cutting through the landscape. The park creates a contemplative setting for visitors to experience the Memorial within the large urban site. A change in pavement material at the center of the park distinguishes the Memorial's commemorative area where Eisenhower's story unfolds in sculpture, bas relief and inscriptions. The park landscape design is integral to the Memorial's character, composition, and intent.

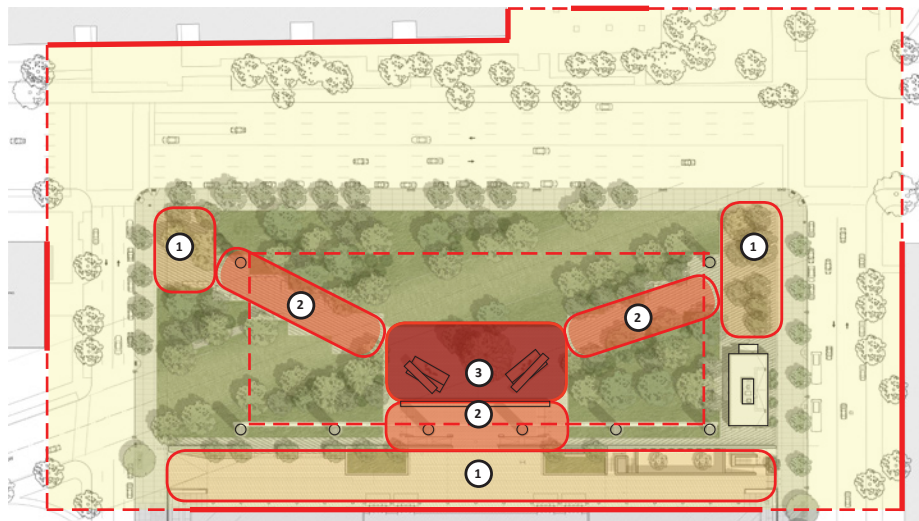
The park landscape inverts the traditional memorial temple in a grove. The open room created by the south tapestry and colonnade engages passers-by on city streets at the urban scale. The interior park is a powerful element of the overall Memorial design. The park's gathering spaces, shaded oasis and walkways will provide opportunities for experiencing the Memorial through educational, artistic, and natural content. The urban park with its many civic amenities, will help bring new life to the city's Southwest district.

The park is designed to enhance the pedestrian visitor experience to the Memorial. Many visitors will arrive from the north and adjacent museums and other destinations along the National Mall. The entrance plazas at the northeast and northwest corners of the site are designed for visitors to gather before entering the park grounds and Memorial. Visitors will also arrive by bus along 4th street near the Information Center.

Two single columns at the northern entrance plazas signal the entrance to the approach walks that direct the visitor towards the Memorial core and through the park. The understory tree canopy shapes the intimate experience and directs views to the Memorial elements. The walkways are designed to encourage social gatherings for visitors to stop and enjoy the park.

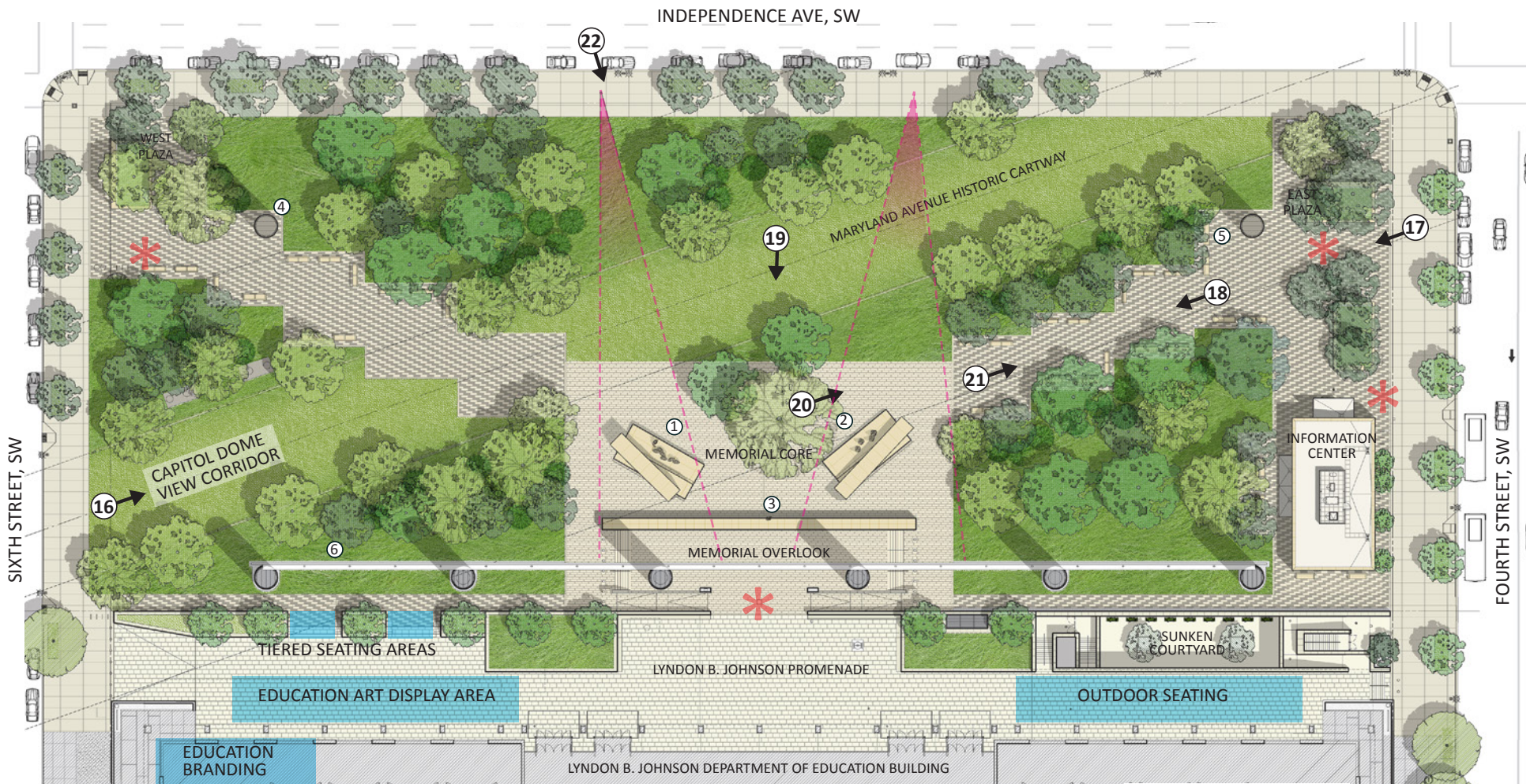
The Lyndon B. Johnson Promenade is a separate and distinct pedestrian forecourt to the Department of Education building. The pedestrian promenade includes seating and other amenities to serve the building occupants and engage Memorial visitors. The Promenade also offers elevated views northward out to the Memorial.

FORMAL PEDESTRIAN APPROACHES THROUGH THE PARK



- 1. Urban Transition Areas
- 2. Memorial Park Approach Walkways
- 3. Memorial Commemorative Area





- ① GENERAL EISENHOWER MEMORIAL ELEMENT
- ② PRESIDENT EISENHOWER MEMORIAL ELEMENT
- ③ YOUNG EISENHOWER STATUE
- ④ WEST COLUMN
- ⑤ EAST COLUMN
- ⑥ SOUTH TAPESTRY

← # VIEW PAGE NUMBER

▲ VIEW CORRIDORS

\* GATHERING/ORIENTATION AREAS



SITE PLAN

## EISENHOWER MEMORIAL

Gehry Partners • AECOM Joint Venture

URBAN PARK AND PEDESTRIAN EXPERIENCE - 2.2





MARYLAND AVENUE VIEWSHED TOWARDS CAPITOL

## 2.2 - URBAN PARK AND PEDESTRIAN EXPERIENCE

### EISENHOWER MEMORIAL

Gehry Partners • AECOM Joint Venture





MEMORIAL ENTRANCE PLAZA AT 4TH STREET & INDEPENDENCE AVENUE

The northern singular columns mark the entrance pathways into the Memorial park.





The Memorial approach walkways are designed with ample seating and social gathering areas. The understory trees create a sense of enclosure and focus views to the Memorial elements at the center of the park.

VIEW TOWARDS MEMORIAL LOOKING WEST

2.2 - URBAN PARK AND PEDESTRIAN EXPERIENCE





VIEW TOWARDS THE MEMORIAL FROM MARYLAND AVENUE

The central view from Maryland Avenue, immediately north of the overlook wall, reveals the unified composition of the Memorial Core. The grove of large canopy trees at the center stand as a unifying landscape element that also provides shade to the gathering space.





VIEW TOWARDS EAST TAPESTRY FROM THE MEMORIAL CORE

## 2.2 - URBAN PARK AND PEDESTRIAN EXPERIENCE

### EISENHOWER MEMORIAL

Gehry Partners • AECOM Joint Venture





VIEW TOWARDS EAST TAPESTRY THROUGH MEMORIAL WALKWAY





VIEW SOUTH TOWARDS MEMORIAL CORE FROM INDEPENDENCE AVENUE

## 2.2 - URBAN PARK AND PEDESTRIAN EXPERIENCE

**EISENHOWER MEMORIAL**  
Gehry Partners • AECOM Joint Venture



## 2.3 - RESPONSE TO NCPC DESIGN PRINCIPLES

The National Capital Planning Commission has outlined seven (7) design principles for the Eisenhower Memorial project to incorporate into the design. Those principles identified below, along with consultation in the Section 106 process, have helped to shape and guide the overall design, placement, and composition of the Memorial design. The design principles created for this site in 2006 are intentionally subjective and open to interpretation. In addition, the design principles often overlap or contradict one another and the competing priorities must be balanced.

In April 2014 the NCPC Commission identified the project design was inconsistent with three of the seven design principles, identified in bold text below. The design team provided a comprehensive analysis for the seven design principles in the *Submission for Preliminary Design Review* dated February 28, 2014. This supplemental submission includes the three outstanding design principles and how the design revisions address the feedback received from NCPC.

**DESIGN PRINCIPLE 1: Preserve reciprocal views to and from the U.S. Capitol along Maryland Avenue, SW.**

DESIGN PRINCIPLE 2: *Enhance the nature of the site as one in a sequence of public spaces embellishing the Maryland Avenue vista.*

DESIGN PRINCIPLE 3: *Create a unified Memorial site that integrates the disparate parcels into a meaningful and functional public gathering place that also unifies the surrounding precinct.*

**DESIGN PRINCIPLE 4: Reflect L'Enfant Plan principles by shaping the Memorial site as a separate and distinct public space that complements the Department of Education Headquarters and other surrounding buildings.**

DESIGN PRINCIPLE 5: *Respect and complement the architecture of the surrounding precinct.*

**DESIGN PRINCIPLE 6: Respect the building lines of the surrounding rights-of-way and the alignment of trees along Maryland Avenue.**

DESIGN PRINCIPLE 7: *Incorporate significant green space into the design of the Memorial.*

## RECAP OF NCPC REVIEW OF DESIGN PRINCIPLES APRIL 2014

### SEVEN NCPC DESIGN PRINCIPLES

**DESIGN PRINCIPLE 1: *Preserve reciprocal views to and from the U.S. Capitol along Maryland Avenue, SW.***

DESIGN PRINCIPLE 2: *Enhance the nature of the site as one in a sequence of public spaces embellishing the Maryland Avenue vista.*

DESIGN PRINCIPLE 3: *Create a unified Memorial site that integrates the disparate parcels into a meaningful and functional public gathering place that also unifies the surrounding precinct.*

**DESIGN PRINCIPLE 4: *Reflect L'Enfant Plan principles by shaping the Memorial site as a separate and distinct public space that complements the Department of Education Headquarters and other surrounding buildings.***

DESIGN PRINCIPLE 5: *Respect and complement the architecture of the surrounding precinct.*

**DESIGN PRINCIPLE 6: *Respect the building lines of the surrounding rights-of-way and the alignment of trees along Maryland Avenue.***

DESIGN PRINCIPLE 7: *Incorporate significant green space into the design of the Memorial.*

Items highlighted in bold indicate design principles not in compliance according to NCPC.

**NCPC ON DESIGN PRINCIPLE 1:** “The scale and configuration of the columns and tapestries within the 160-foot right-of-way continue to obscure the view towards the U.S. Capitol. While the tapestries clearly fall within the category of artwork, their scale and configuration, which narrows the viewshed from 160’ to 95’ with columns that are 78’ high and 10’ in diameter results in a substantial diminution of what is intended to be one of the L’Enfant Plan’s most symbolic and monumental views.

Placement of elements within the viewshed should also be done in a manner that preserves the prevailing civic – *more horizontal* – character that is typical of the city’s broader, more significant avenues which allows public buildings and commemorative works to be the dominant elements within these important view corridors.” *Executive Director’s Recommendation, Page 33*

**NCPC ON DESIGN PRINCIPLE 4:** “The placement of the east and west tapestries also takes away from the success of the urban park as a unifying element within the precinct. Rather, the spatial relationship is established more between the adjacent buildings and the tapestries as opposed to the Memorial core and the surrounding park.” *Executive Director’s Recommendation, Page 35*

**NCPC ON DESIGN PRINCIPLE 6:** “Regarding Independence Avenue, while the changes to the tapestry configuration address comments from the concept stage, the current design has created a new issue that causes inconsistency with this principle. Specifically, the realignment of the smaller tapestries has resulted in the column at the northwest corner extending beyond the building line established by the adjacent buildings to the east and west (Wilbur Cohen Building and Wilbur Wright Building) creating a visual intrusion into the existing view along Independence Avenue.” *Executive Director’s Recommendation, Page 36.*

## DESIGN REVISIONS IN RESPONSE TO NCPC APRIL 3, 2014 MEETING

### SEVEN NCPC DESIGN PRINCIPLES

**DESIGN PRINCIPLE 1: *Preserve reciprocal views to and from the U.S. Capitol along Maryland Avenue, SW.***

DESIGN PRINCIPLE 2: *Enhance the nature of the site as one in a sequence of public spaces embellishing the Maryland Avenue vista.*

DESIGN PRINCIPLE 3: *Create a unified Memorial site that integrates the disparate parcels into a meaningful and functional public gathering place that also unifies the surrounding precinct.*

**DESIGN PRINCIPLE 4: *Reflect L'Enfant Plan principles by shaping the Memorial site as a separate and distinct public space that complements the Department of Education Headquarters and other surrounding buildings.***

DESIGN PRINCIPLE 5: *Respect and complement the architecture of the surrounding precinct.*

**DESIGN PRINCIPLE 6: *Respect the building lines of the surrounding rights-of-way and the alignment of trees along Maryland Avenue.***

DESIGN PRINCIPLE 7: *Incorporate significant green space into the design of the Memorial.*

**DESIGN RESPONSE TO NCPC DESIGN PRINCIPLE 1:** The design revisions widen the Maryland Avenue viewshed from 95' to 135' wide creating a proportionally horizontal framed view towards the Capitol building.

**DESIGN RESPONSE TO NCPC DESIGN PRINCIPLE 4:** The design revisions eliminate the East and West tapestries, allowing the influence of the adjacent buildings to define and unify the site.

**DESIGN RESPONSE TO NCPC DESIGN PRINCIPLE 6:** The northern singular columns are set back more than 47' from the Independence Avenue right-of-way and are located fully within the planes of the adjacent building facades.

Items highlighted in bold indicate design principles not in compliance according to NCPC.



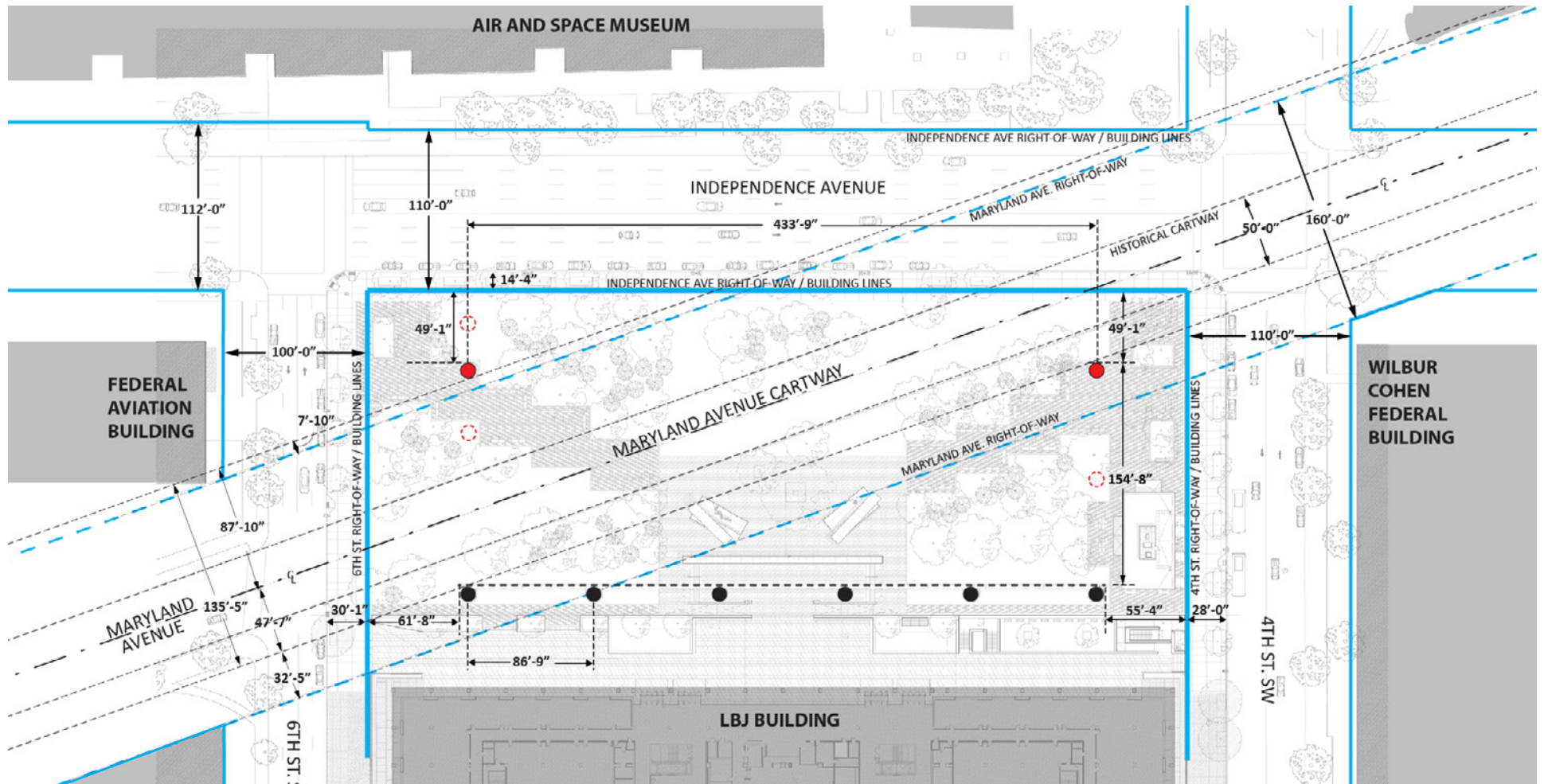
AERIAL VIEW - The design revisions eliminate the East and West tapestries, allowing the influence of the adjacent buildings to help define and unify the site.

## 2.3 - RESPONSE TO NCPC DESIGN PRINCIPLES

### EISENHOWER MEMORIAL

Gehry Partners • AECOM Joint Venture





PLAN-DIAGRAM

KEY:

- RIGHTS-OF-WAYS
- ORIGINAL LOCATION OF COLUMNS
- REVISED COLUMN LOCATIONS
- COLUMN LOCATIONS

DESIGN REVISIONS IN RESPONSE TO NCPC APRIL 3, 2014 MEETING

- The design revisions eliminate the East and West tapestries, allowing the influence of the adjacent buildings to define and unify the site.
- The northern singular columns are located fully within the planes of the adjacent building facades.
- The design revisions widen the Maryland Avenue viewshed from 95' to 135' wide creating a proportionally *horizontal* framed view towards the Capitol building.
- The April 2014 concept included three columns that were within the 160' ROW. The revised plan includes only two columns within the southern edge of 160' ROW.

DESIGN PRINCIPLE 4  
REFLECT L'ENFANT PLAN PRINCIPLES BY SHAPING THE MEMORIAL SITE AS A SEPARATE AND DISTINCT PUBLIC SPACE THAT  
COMPLEMENTS THE DEPARTMENT OF EDUCATION HEADQUARTERS AND OTHER SURROUNDING BUILDINGS

DESIGN PRINCIPLE 6  
RESPECT THE BUILDING LINES OF THE SURROUNDING RIGHTS-OF-WAY AND THE ALIGNMENT OF TREES ALONG MARYLAND AVENUE



AERIAL VIEW TOWARDS SOUTHWEST - The northern singular columns are located fully within the planes of the adjacent building facades.

## 2.3 - RESPONSE TO NCPC DESIGN PRINCIPLES

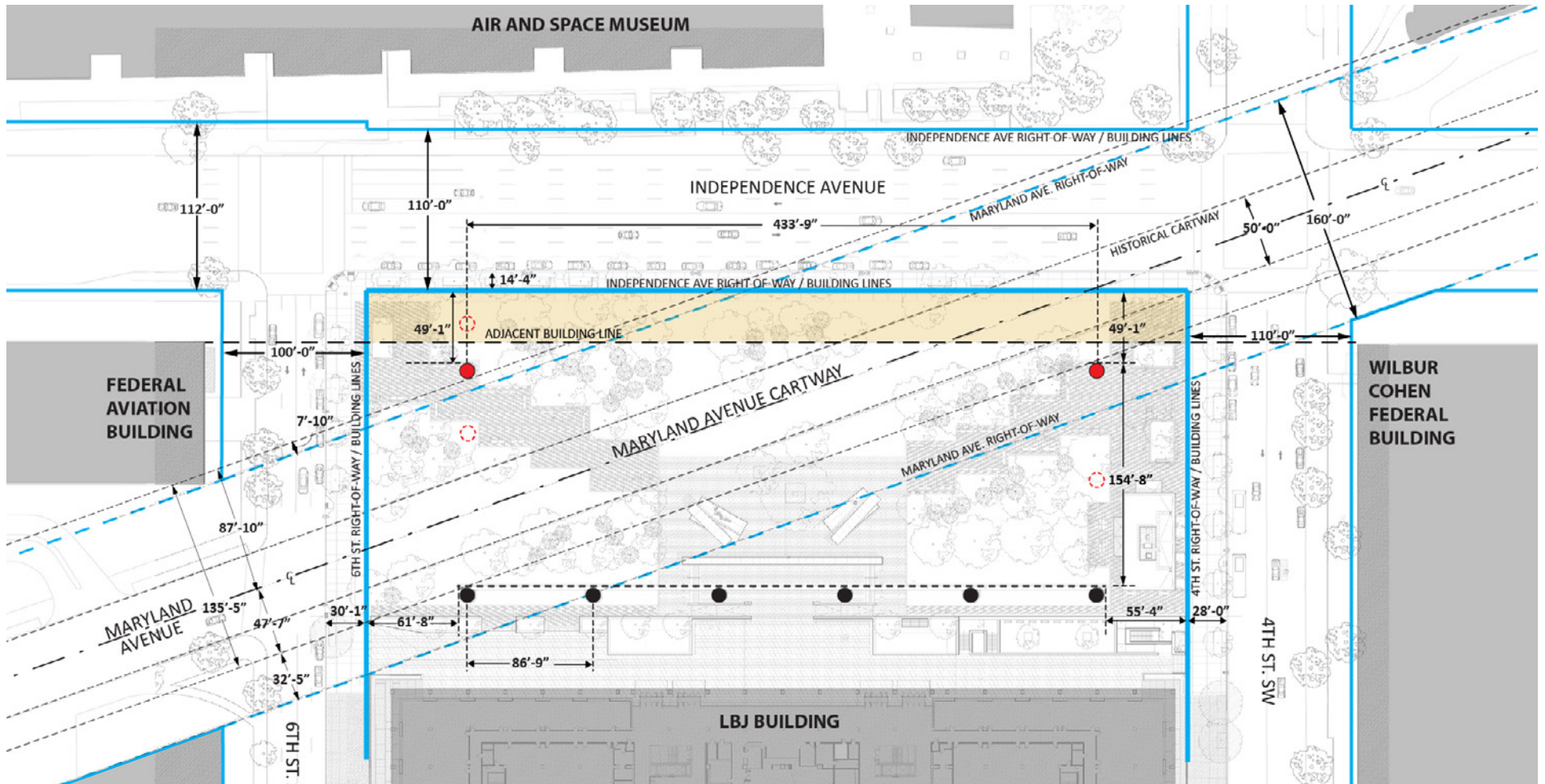
### EISENHOWER MEMORIAL

Gehry Partners • AECOM Joint Venture



DESIGN PRINCIPLE 4  
REFLECT L'ENFANT PLAN PRINCIPLES BY SHAPING THE MEMORIAL SITE AS A SEPARATE AND DISTINCT PUBLIC SPACE THAT  
COMPLEMENTS THE DEPARTMENT OF EDUCATION HEADQUARTERS AND OTHER SURROUNDING BUILDINGS

DESIGN PRINCIPLE 6  
RESPECT THE BUILDING LINES OF THE SURROUNDING RIGHTS-OF-WAY AND THE ALIGNMENT OF TREES ALONG MARYLAND AVENUE



PLAN-DIAGRAM

KEY:

- RIGHTS-OF-WAYS
- ORIGINAL LOCATION OF COLUMNS
- REVISED COLUMN LOCATIONS
- COLUMN LOCATIONS

#### DESIGN PRINCIPLE #4 AND #6: DESIGN REVISIONS

- Design principle #4 is addressed by eliminating the East and West tapestries, allowing the influence of the adjacent buildings to define and unify the site.
- Design principle #6 is addressed by placing the northern singular columns fully within the planes of the adjacent building facades.

DESIGN PRINCIPLE 1  
PRESERVE RECIPROCAL VIEWS TO AND FROM THE U.S. CAPITOL ALONG MARYLAND AVENUE, SOUTHWEST



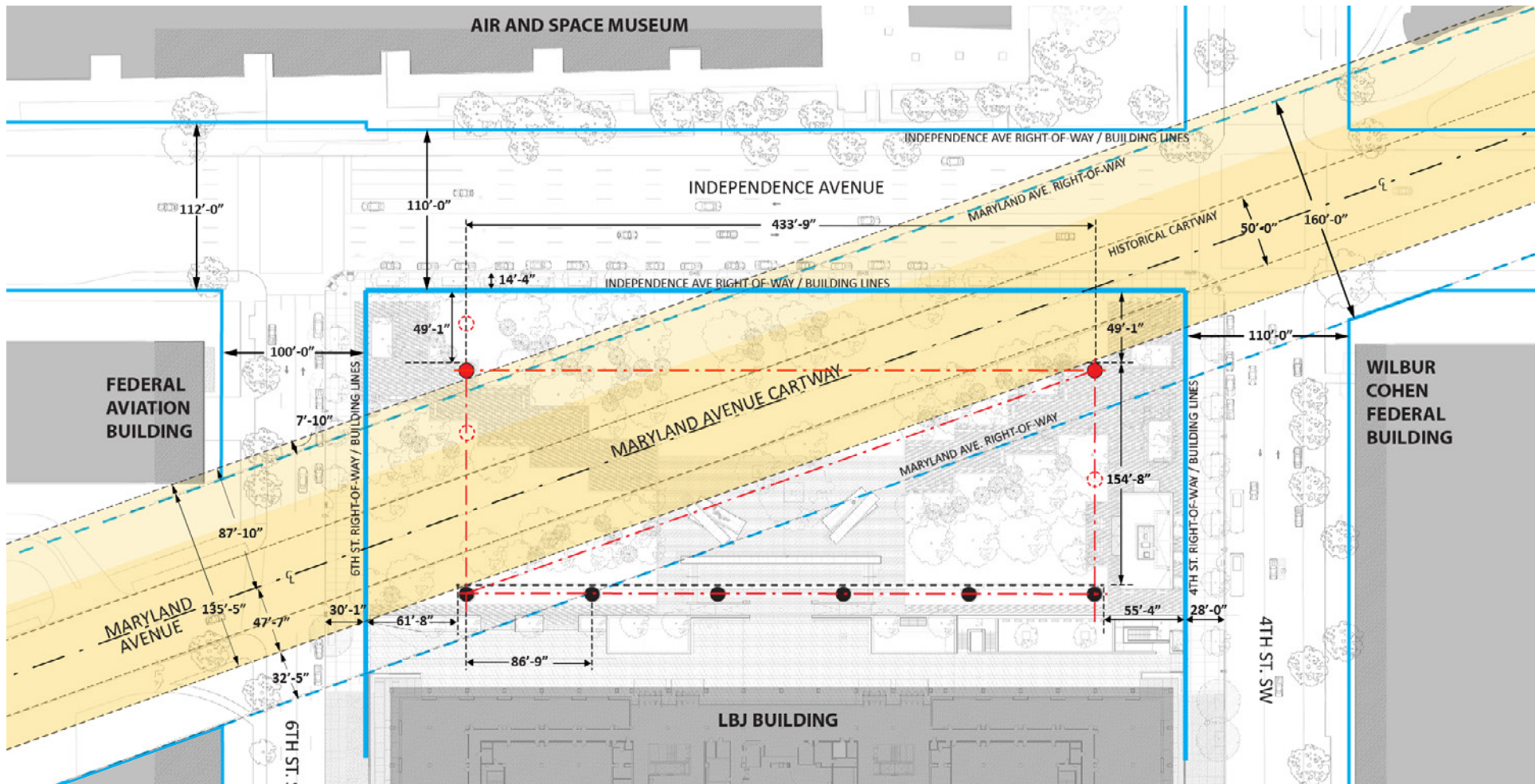
VIEW ALONG MARYLAND AVENUE TOWARDS CAPITOL - The design revisions widen the Maryland Avenue viewshed from 95' to 135' wide, creating a proportionally *horizontal* framed view to the Capitol building.

## 2.3 - RESPONSE TO NCPC DESIGN PRINCIPLES

**EISENHOWER MEMORIAL**  
Gehry Partners • AECOM Joint Venture



DESIGN PRINCIPLE 1  
PRESERVE RECIPROCAL VIEWS TO AND FROM THE U.S. CAPITOL ALONG MARYLAND AVENUE, SOUTHWEST



PLAN-DIAGRAM

KEY:

- RIGHTS-OF-WAYS
- ORIGINAL LOCATION OF COLUMNS
- CENTER LINE OF COLUMNS
- REVISED COLUMN LOCATIONS
- COLUMN LOCATIONS

DESIGN PRINCIPLE #1: DESIGN REVISIONS

- The design revisions widen the Maryland Avenue viewshed from 95' to 135' wide creating a proportionally *horizontal* framed view towards the Capitol building.
- April 2014 concept included three columns that were within the 160' ROW. The revised plan includes only two columns within the southern edge of the ROW.
- The southwest column and northeast column align parallel to the center line of Maryland Avenue.

