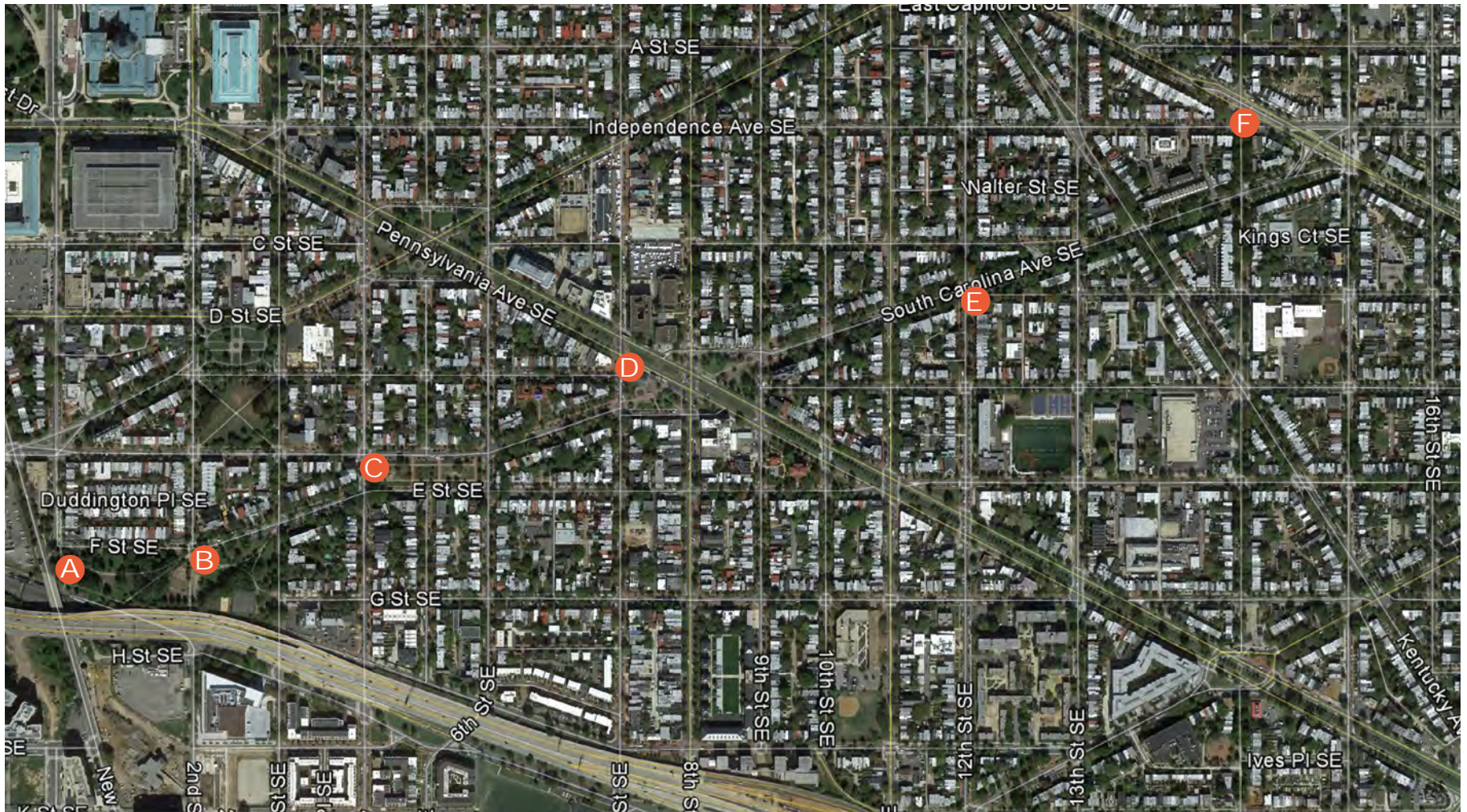


Marion Memorial Site Selection Overview



September 23, 2014

Francis Marion, The Legend of the Swamp Fox



General Francis Marion, known as "The Swamp Fox," was a Revolutionary officer from Berkeley County, South Carolina. Even though he was a commissioned officer in the South Carolina Second Regiment, he also led a band of irregular fighters in the back- and low-country swamps of South Carolina fighting the British troops under Lord Cornwallis. He is generally credited as the Father of Guerilla Warfare, and is recognized as such at various War Colleges.

A man of diminutive stature, General Marion was a lifelong citizen-soldier and planter, living on his plantation, Pond Bluff, which now lies under Lake Marion in Central South Carolina. He fought as a lieutenant in the French and Indian War in the 1750s, The Cherokee Campaign of 1760, as a captain at the Battle of Sullivan's Island on June 28, 1776, and as a lieutenant colonel at the Battle of Savannah on October 9, 1779. One interesting fact about his life is that he was carried out of Charleston in 1780 with a broken ankle suffered when he jumped out of a window to escape a Loyalist trap, thus avoiding the fall of Charleston under General Benjamin Lincoln and his 5,000 Continental Troops.

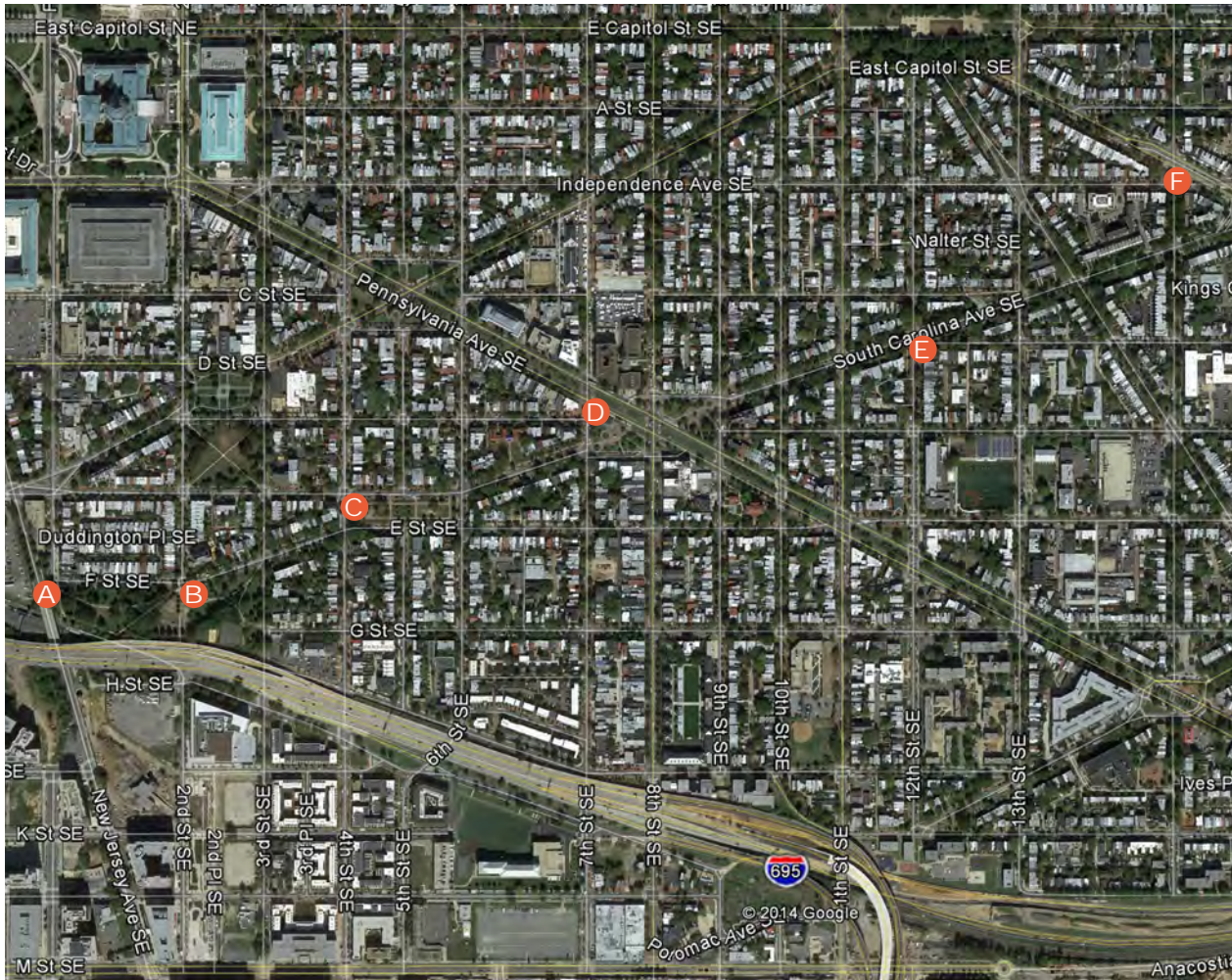
After Charleston had fallen and the Americans were driven from the field at the Battle of Camden in August of 1780, General Marion and his band of irregulars, with whites and blacks, free and slave, along with friendly Native Americans, were the only organized fighting force in action in America, as General Washington's army was at a stalemate outside of British occupied New York. (It is believed that Marion's Band was the first integrated fighting force in America as well.) General Washington had then selected General Nathanael Greene to take over the Southern Administration to replace the disgraced General Horatio Gates. In order to buy time for Greene to come South, General Marion and his band harassed British positions between Camden, Georgetown and Charleston. Two particular "choke points" on the supply lines were on the Santee River near Charleston and the Black River near Georgetown. With so much success in these areas using such tactics, the British Command sent several officers after Marion, one of whom was the famous Colonial Banastre Tarleton who reportedly exclaimed after several unsuccessful capture attempts, "...as to this damned old fox, the devil himself could not catch him." The name "The Swamp Fox" stuck.

Disrupting the supply lines, drawing forces away from the expected General Greene, an all-out harassment helped to ensure Patriot Victories at King's Mountain, Cowpens, Eutaw Springs and the eventual surrender at Yorktown. Without General Marion, many historians feel that the British Plan to control the Southern Colonies and split the fledgling nation would have succeeded. Fortunately, the local populace was encouraged by the exploits of The Swamp Fox. The Cause of Independence and the American Experiment was saved because of such a great leader.

General Marion is now and has always been a National Hero. Second only to George Washington in popularity in the century following the Revolutionary War, Marion has lent his name to 29 cities and 17 counties across America; a four year university; a National Forest; countless babies; one of two biographies from the famous biographer Parson M.L. Weems (the other being General Washington); the William Cullen Bryant epic poem "Song of Marion's Men;" a feature length motion picture, The Patriot, which starred Mel Gibson; a Wonderful World of Disney series in 1959-60 called "The Swamp Fox," starring Leslie Nielsen and hosted by Walt Disney himself; and a small park on Capitol Hill in the city he helped to create.

Section 331 of Public Law 110-229 signed by President Bush on May 8, 2008, authorizes the Marion Park Project to establish a commemorative work on federal land in the District of Columbia to honor Brigadier General Francis Marion.

Marion Memorial Site Selection



Site Locations

A / Garfield Park West

B / Garfield Park East

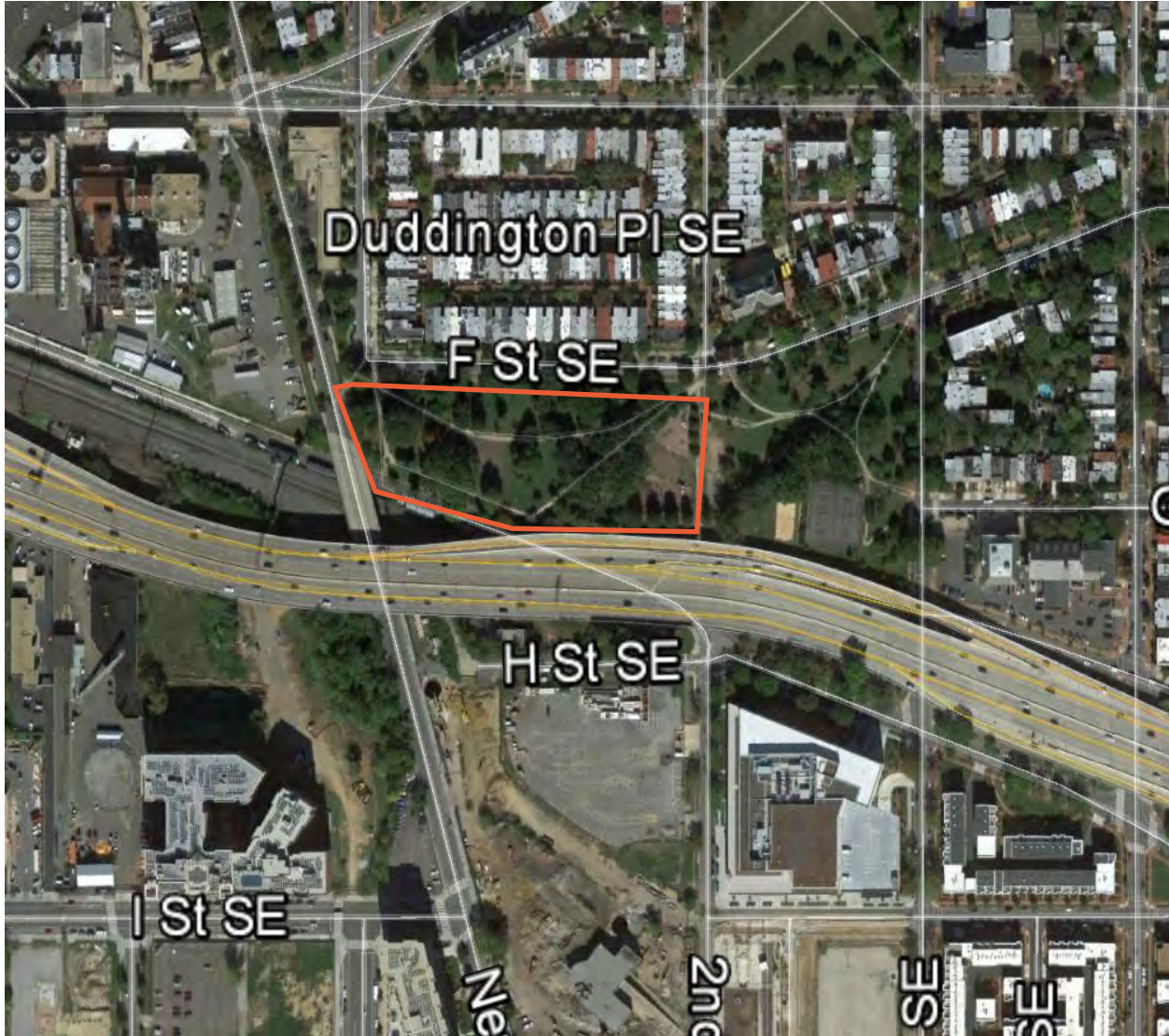
C / Marion Park

D / South Carolina Ave. & Pennsylvania Ave. SE

E / South Carolina Ave. & C Street SE

F / South Carolina Ave. & Massachusetts Ave. SE

Site A: Garfield Park West



Site Information

Total Site Area: 3.5 acres

Area for Memorial: 300 - 500 sq. ft.

Site Jurisdiction: District of Columbia

Adjacent Land Uses:

- Transportation infrastructure (Southeast Freeway and New Jersey Avenue)
- Residential
- Government (US Capitol Support Facilities)

Pros

- Park serves as the visual terminus of South Carolina Avenue
- Site has large unprogrammed areas
- Receives pedestrian traffic

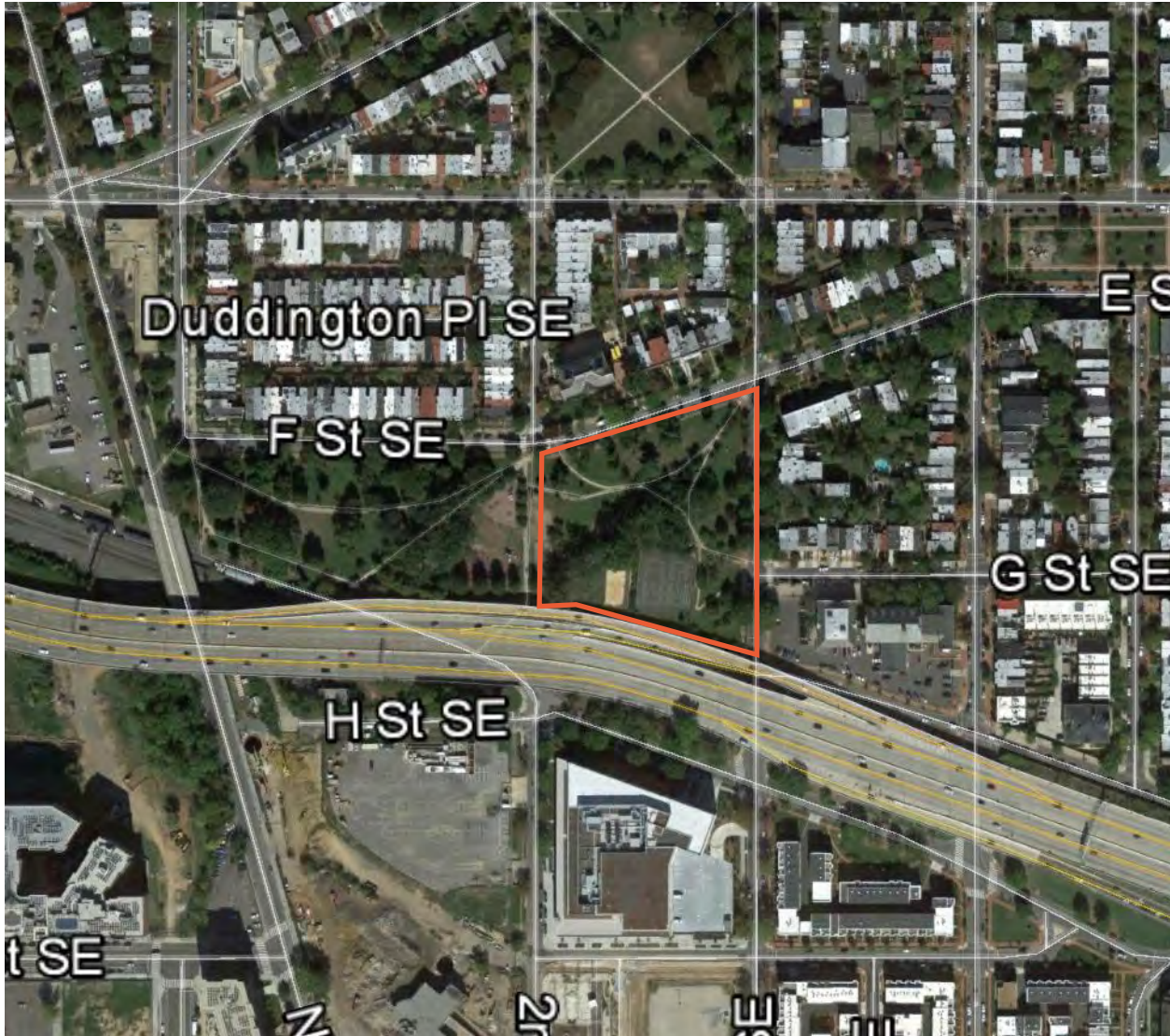


Cons

- Transportation infrastructure forms barrier along south side of park
- Site has large active recreation facilities, including large playground
- Existing open space may be at more remote portions of site
- Under District jurisdiction



Site B: Garfield Park East



Site Information

Total Site Area: 3.8 acres

Area for Memorial: 300 - 500 sq. ft.

Site Jurisdiction: District of Columbia

Adjacent Land Uses:

- Transportation infrastructure (Southeast Freeway)
- Residential
- School
- Neighborhood retail

Pros

- Area available for Memorial uses small in scale
- Visible along South Carolina Avenue
- Receives pedestrian traffic

Cons

- Contains popular recreational amenities, including tennis courts
- Transportation infrastructure forms a barrier along the south side
- Under District jurisdiction



Site C: Marion Park



Site Information

Total Site Area: 1.5 acres

Area for Memorial: 300 - 500 sq. ft.

Site Jurisdiction: National Park Service

Adjacent Land Uses:

- Residential
- Neighborhood retail
- Public facilities (police station)
- Institutional (church)

Site C: Marion Park

West

Central

East



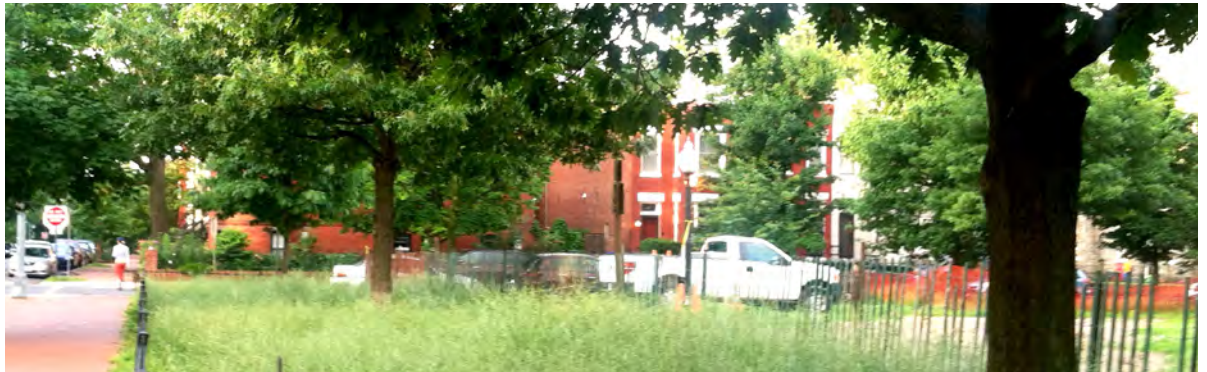
Site C: Marion Park (East)

Pros

- Site has thematic link to Francis Marion (Marion Park)
- Alignment with South Carolina Avenue SE
- Area has high pedestrian traffic
- Park improvements currently underway

Cons

- Existing utility box for traffic lights at northeast corner of site could potentially obstruct views of Memorial
- Neighbors previously expressed concern about potential disruption of visitor use



Site C: Marion Park (Central)

Pros

- Site has thematic link to Francis Marion (Marion Park)
- Aligned with fellow Revolutionary War officer Nathanael Greene statue in Stanton Park to north
- Area has high pedestrian traffic
- Park improvements currently underway

Cons

- Neighbors previously expressed concern about potential disruption of visitor use



Site C: Marion Park (West)

Pros

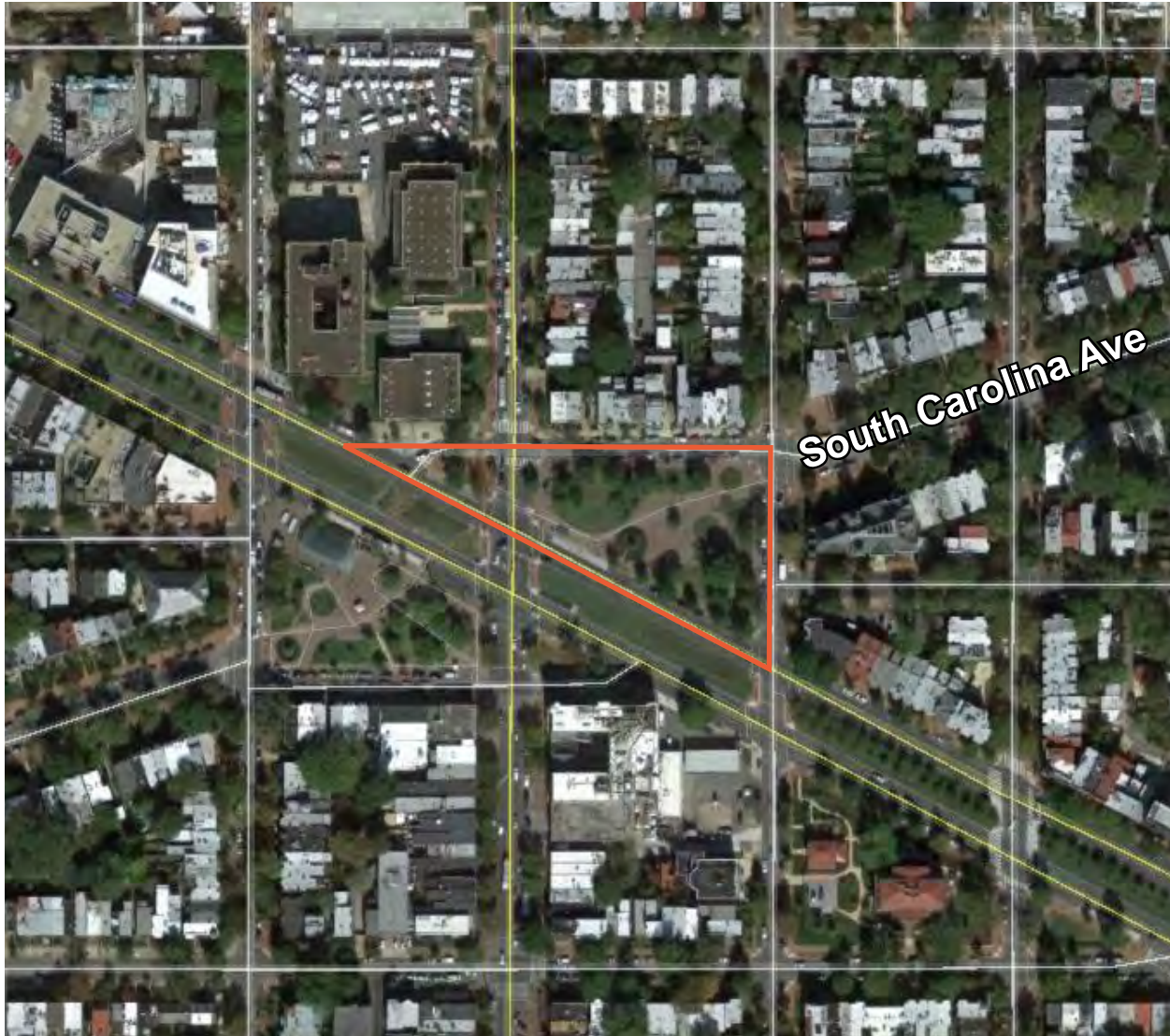
- Site has thematic link to Francis Marion (Marion Park)
- Area has high pedestrian traffic Site is within Marion Park
- Alignment with South Carolina Avenue SE

Cons

- Park improvements currently underway
- Neighbors previously expressed concern about potential disruption of visitor use
- Area dominated by existing playground



Site D: South Carolina and Pennsylvania Avenues SE



Total Site Area: 1 acre

Area for Memorial: 300 - 500 sq. ft.

Site Jurisdiction: District of Columbia

Adjacent Land Uses:

- Residential
- Neighborhood and destination retail
- Public Library
- Transportation corridor
- Metro station, Eastern Market

Pros

- Alignment with South Carolina Avenue SE
- Large open space
- Identified in Museums & Memorials Master Plan as a memorial site



Cons

- Orientation more towards Pennsylvania Avenue SE, a major transportation route
- Alternative planning process underway with DDOT and other District agencies
- Informal playground
- Under District jurisdiction



Site D: South Carolina and Pennsylvania Avenues SE

Location:



Framework Context:



Vicinity:



Site Description Summary:

This well-defined public space along the Pennsylvania Avenue, SE corridor offers a neighborhood setting with adjoining low density residential and commercial uses. The site is presently characterized as a neighborhood park and provides identity to the nearby Eastern Market Metro Station entrance. This site is one of several important physical nodes along the Pennsylvania Avenue corridor between the U.S. Capitol and the Anacostia River. The triangular parcel offers established landscape features, lawn areas, and seating.

Physical Characteristics:

Location:	Southeast
Acreage:	0.25 - 0.50
Configuration:	Triangular
Overall Character:	Parkland
Terrain:	Flat
Adjoining Uses:	Mixed Use

Urban Design Framework:

Relative Prominence:	District / Neighborhood
Comp. Plan Element:	Special Street
Framework Element:	Monumental Corridor
Plan Compatibility:	Consistent
Memorial Proximity:	Walk
Potential Identity:	Yes

Site Access:

Vehicular Corridor:	Yes - Pennsylvania Ave.
Metrorail Proximity:	Very Good- E. Market
Metrobus Proximity:	Very Good
Pedestrian Access:	Good
Parking Availability:	Fair- Only Street Pkg
Intermodal Station Proximity:	Yes- Metro
Circulator Node Proximity:	Yes
Water Access:	No

Profile:

Development Term:	Present
Ownership:	NPS
ANC:	6B
Current Development Project:	NA
NPS Reservation:	48
NPS Park Name:	Triangle
NPS Total Park Acreage:	0.5

Commemorative Opportunity:

Potential commemorative actions for this site must consider the residential scale of neighboring parcels. Future memorial features could include small or medium scale elements within the landscape parcels that complement the sequence of small parks along the Pennsylvania Avenue corridor. The site's location near the Eastern Market Metro Station presents an opportunity for a future memorial feature that provide increased aesthetic amenity for transit users, Pennsylvania Avenue commuters, and residents.

Visual Quality:

Prominent Views:	Community and Neighborhood
Vistas:	Indirect
Existing Setting:	Public Park / Metro Station
Potential Setting:	Public Park / Metro Station
Gateway Corridor:	Yes

Historic & Cultural Resources:

Historic Resources:	Special Street, Place
Cultural Resources:	Street, Landscape
Historic District:	Yes
Arts/Entertainment District:	NA
Embassy Proximity:	NA
Memorial Zone:	2
Museum Proximity:	Drive

Site Image



Park setting along Pennsylvania Avenue offers a suitable commemorative opportunity for small scale features within the context of this principal corridor with residential and mixed uses

Site D: South Carolina and Pennsylvania Avenues SE Proposed Plan for Eastern Market Metro Park



Site E: South Carolina Avenue and C Street SE



Total Site Area: 0.2 acres

Area for Memorial: 300 - 500 sq. ft.

Site Jurisdiction: District of Columbia

Adjacent Land Uses:

- Residential

Pros

- Alignment with South Carolina Avenue SE
- Currently unprogrammed open space



Cons

- Not in high pedestrian traffic area
- Directly adjacent to residences
- Potential conflict with informal recreation use by neighbors and dog walkers
- Under District jurisdiction



Site F: South Carolina and Massachusetts Avenues SE



Total Site Area: 0.5 acres

Area for Memorial: 300 - 500 sq. ft.

Site Jurisdiction: District of Columbia

Adjacent Land Uses:

- Residential
- Neighborhood retail
- Transportation

Pros

- Alignment with South Carolina Avenue SE
- Identified in Museums & Memorials Master Plan as a memorial site

Cons

- Orientation more towards Massachusetts Avenue SE and Independence Avenue SE (one-way eastbound)
- Potential sites segmented by roads
- Low pedestrian awareness of site
- Under District jurisdiction



Site F: South Carolina and Massachusetts Avenues SE

Location:



Framework Context:



Vicinity:



Site Description Summary:

This location is at the intersection of three Special Streets within the prominent Massachusetts Avenue, SE, corridor. Situated at a midpoint between Lincoln Park and the terminus of Massachusetts Avenue, this location includes several small triangular parcels that are formed by the roadway system. The visual character of this location is defined by treelined streets, residences, and small-scale commercial uses. A redefinition of this intersection in conjunction with other improvements within the corridor could provide a new level of visibility for Massachusetts Avenue and its potential extension to the Anacostia River through the D.C. General Hospital site.

Physical Characteristics:

Location:	Southeast
Acreage:	Varies
Configuration:	Triangular
Overall Character:	Open, Landscaped
Terrain:	Flat
Adjoining Uses:	Residential, Commercial

Urban Design Framework:

Relative Prominence:	Neighborhood
Comp. Plan Element:	Special Street
Framework Element:	Monumental Corridor
Plan Compatibility:	Consistent
Memorial Proximity:	Walk
Potential Identity:	Yes

Site Access:

Vehicular Corridor:	No
Metrorail Proximity:	Poor- Stadium Armory
Metrolbus Proximity:	Very Good
Pedestrian Access:	Fair- No Ped. Signals
Parking Availability:	Fair- Only Street Parking
Intermodal Station Proximity:	No
Circulator Node Proximity:	No
Water Access:	No

Profile:

Development Term:	Present
Ownership:	NPS
ANC:	6B
Current Development Project:	NA
NPS Reservation:	90
NPS Park Name:	TBD
NPS Total Park Acreage:	TBD

Commemorative Opportunity:

This neighborhood node provides an appropriate context for a future commemorative element of limited size and scale. Within the several small parcels associated with this location, a new memorial could improve the existing community imagery, while providing new visibility for this residential area. Redefining the intersection through the addition of a new memorial could advance the visual character and prominence of the Massachusetts Avenue, SE corridor and provide the impetus for extending the avenue beyond its present terminus, restoring a historic linkage with the Anacostia River.

Visual Quality:

Prominent Views:	District, Neighborhood
Vistas:	Indirect
Existing Setting:	Neighborhood
Potential Setting:	Community Node
Gateway Corridor:	NA

Historic & Cultural Resources:

Historic Resources:	Special Street, Place
Cultural Resources:	Street, Landscape
Historic District:	NA
Arts/Entertainment District:	NA
Embassy Proximity:	NA
Memorial Zone:	2
Museum Proximity:	Drive

Site Image



Intersection of Massachusetts Avenue with South Carolina and Independence Avenues creates several triangular parcels where a small scale memorial feature could be appropriate
