



# KENNEDY CENTER EXPANSION PROJECT

## **Section 106 Consulting Parties Meeting #3**

August 14, 2014  
1:30pm



## AGENDA

- Introductions
- Project Overview and Update on Section 106 Consultation
- Update on Delaware Nation Consultation and the Phase 1A Archaeology Report
- Review of Alternatives and Update on Design
- Review of Effects Analysis
- Minimization and Mitigation Discussion
- Next Steps and Schedule



## PROJECT OVERVIEW

- The Kennedy Center is a Congressionally designated national showcase for the performing arts and a living memorial to President Kennedy.
- The Kennedy Center has a critical shortage of dedicated facilities to serve its existing and expanding programs. It contains no dedicated classrooms or event areas, a limited number of rehearsal rooms, and insufficient administrative space.
- The proposed expansion would be located south of the existing building on a site currently used for underground and above-grade parking.
- The expansion will be a fully integrated part of the Kennedy Center with convenient connections to existing facilities and the riverfront.





## UPDATE ON S106 CONSULTATION

- Section 106 consultation was initiated with the DC Historic Preservation Office (DC HPO) on July 12, 2013.
- A joint NEPA public scoping meeting and Section 106 Consulting Parties Meeting was held on July 22, 2013, during which the consulting parties were introduced to the project, presented with a draft Area of Potential Effects (APE), and invited to comment on the proposal.
- A second Section 106 Consulting Parties Meeting occurred on September 17, 2013, to present the proposed alternatives, invite comment on the potential effects, and solicit input into ways to avoid, minimize, or mitigate adverse effects.
- A Section 106 Assessment of Effects report was submitted to the DC HPO and the ACHP on August 7, 2014, and has been posted to the NPS Planning, Environment, and Public Comment (PEPC) website at <http://parkplanning.nps.gov/kennedycenter>



## CONSULTATION WITH THE DELAWARE NATION

- The Delaware Nation is interested in participating in Section 106 consultation for any projects potentially impacting the Potomac River.
- On October 28, 2013, the Delaware Nation was invited to participate in Section 106 consultation for the Kennedy Center Expansion Project.
- The NPS, NCPC, and Kennedy Center met with the Delaware Nation on November 25, 2013, to discuss the project.
- Subsequently, Phase 1A archaeological investigations were conducted.
- To date, no American Indian resources have been identified through consultation with the Delaware Nation.





## PHASE IA ARCHAEOLOGICAL ASSESSMENT

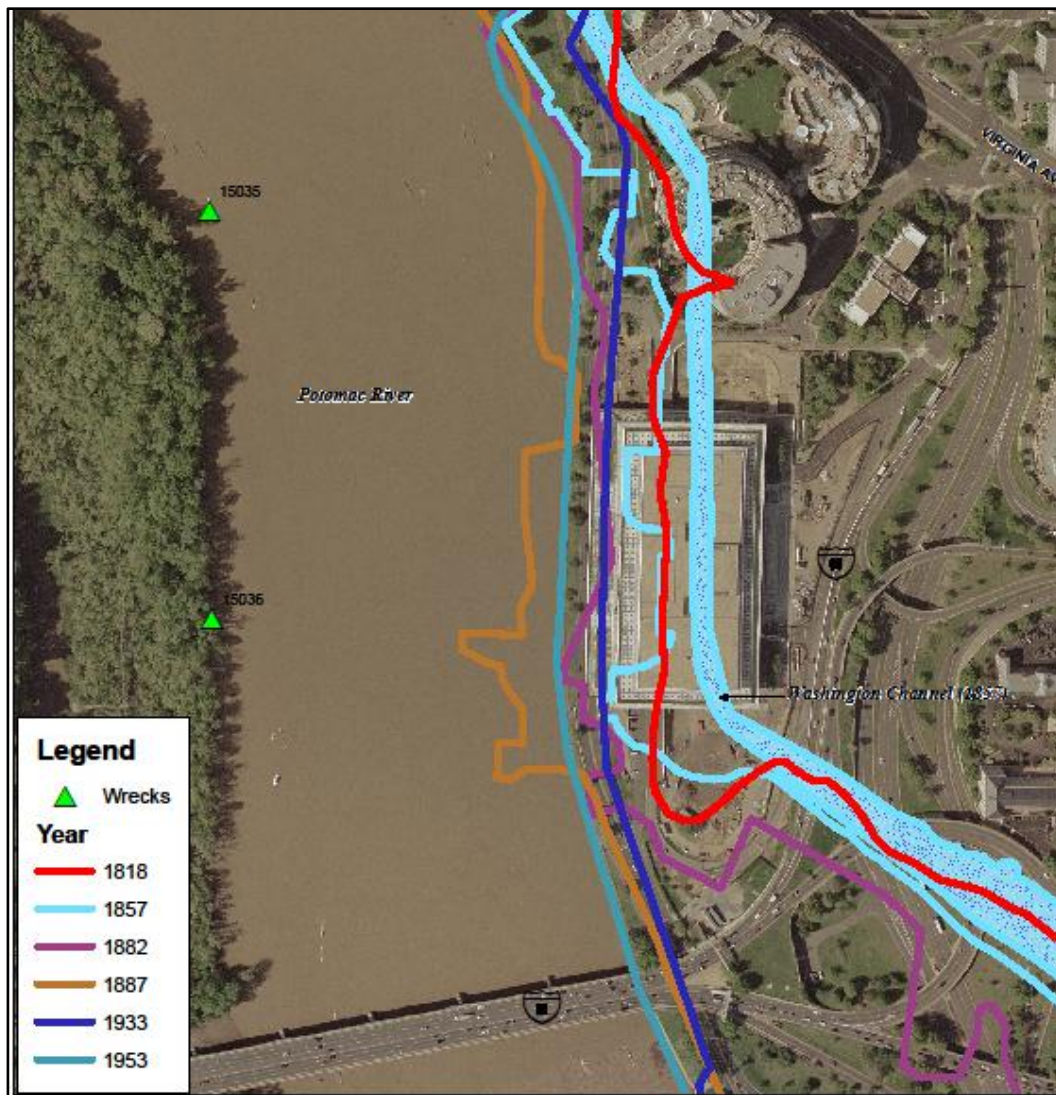
Desktop study designed to:

- identify potential for presence of Native American and historic period archaeological sites;
- evaluate prior impacts; and,
- recommend additional field investigations.

Resources reviewed and analyzed included:

- DC HPO site files and previous archaeological reports;
- NOAA submerged vessel database;
- historic contexts;
- historic maps, aerial photographs, and nautical charts;
- geotechnical borings logs;
- GIS-assisted elevation change analysis;
- GIS-assisted shoreline change analysis;
- Native American site location models; and,
- engineering plans.





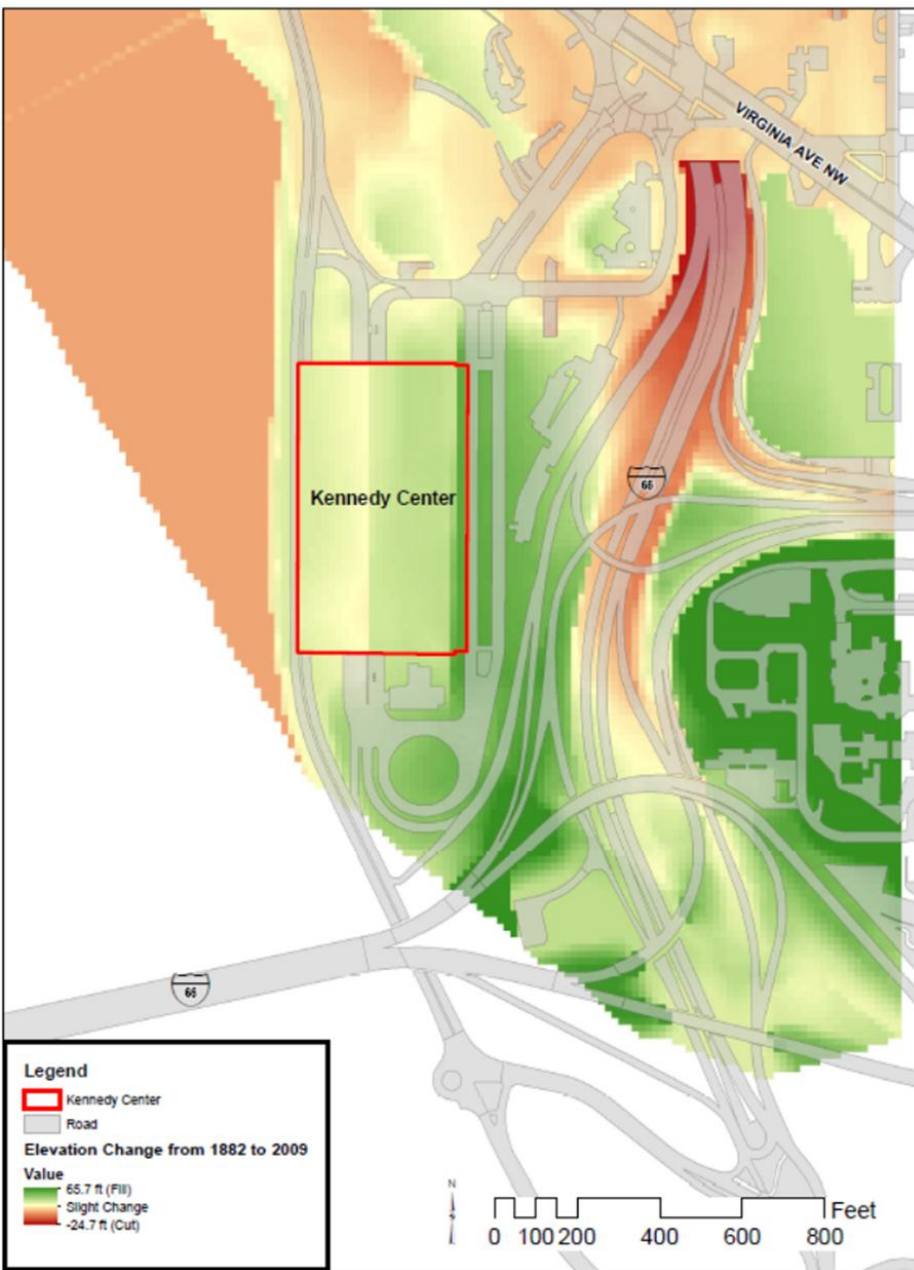
**Native American:** High potential east and north of 1818 shoreline

### Two questions:

- Have the potential sites been destroyed by construction or protected by fill?
- Will current plans impact the sites, if present?



**Historic period:** Washington City Canal, wharves, shipyards, structures on wharves and shipyards



## Elevation Change and Borings Analysis

- Deposits of fill expanded shoreline to west and south-southeast
- Increased elevation of former floodplain
- GIS elevation change modelling and geotechnical borings indicate:
  - 19 feet or more fill along west and south portions of project area
  - 29 feet along I-66
- Construction plans indicate removal of:
  - 18 feet or more along west and south portions of project area
  - 28 feet along I-66

## Conclusions

- About 1 foot of fill could protect any resources potentially present
- Driven pilings will extend below fill
- River Pavilion within Pleistocene Channel

**Elevation Change Analysis:**  
Compares 1888 and modern topography





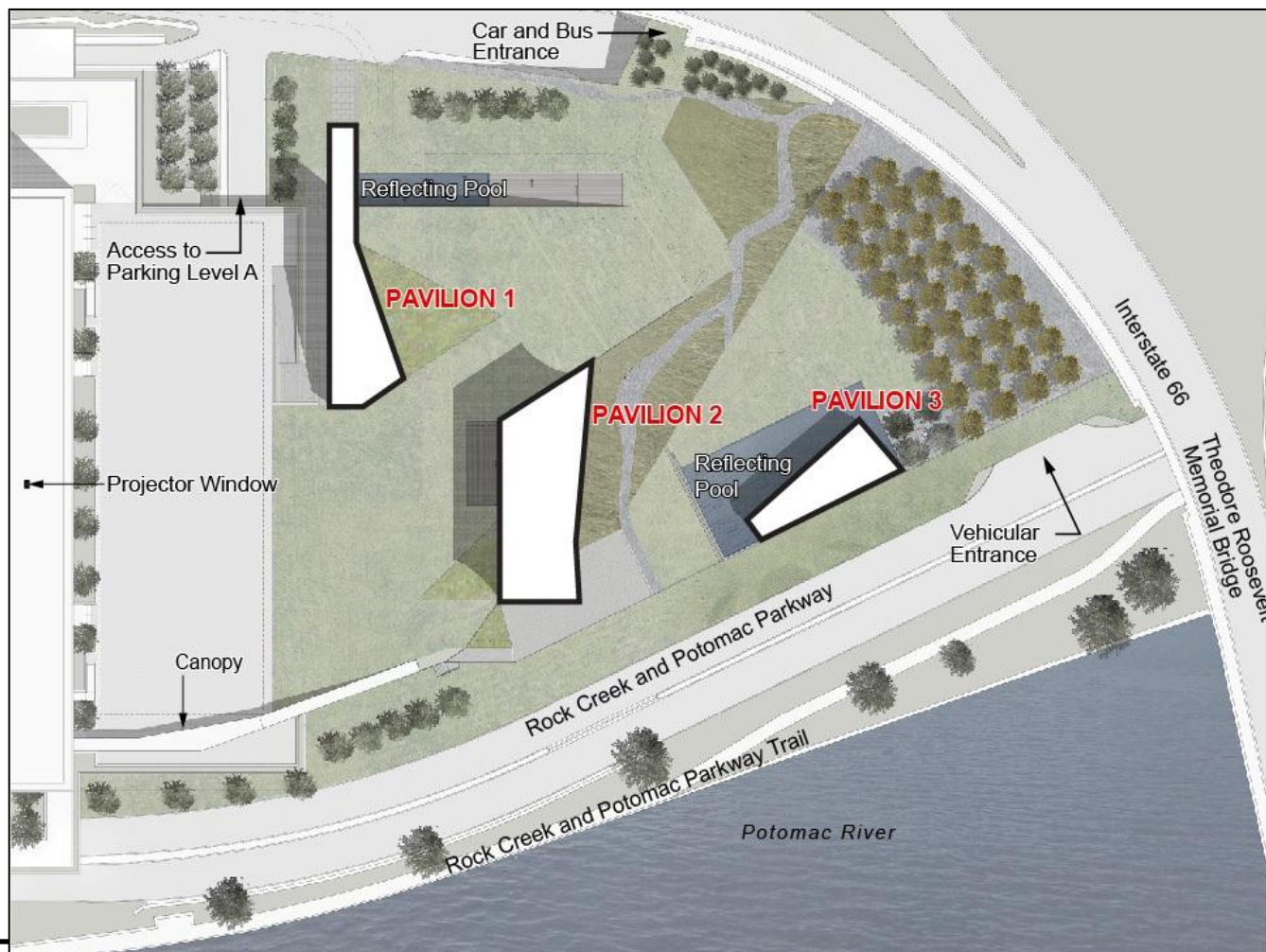
## BRIEF REVIEW OF ALTERNATIVES

### Alternative A: No Action





## Alternative B: Three Land-Based Pavilions



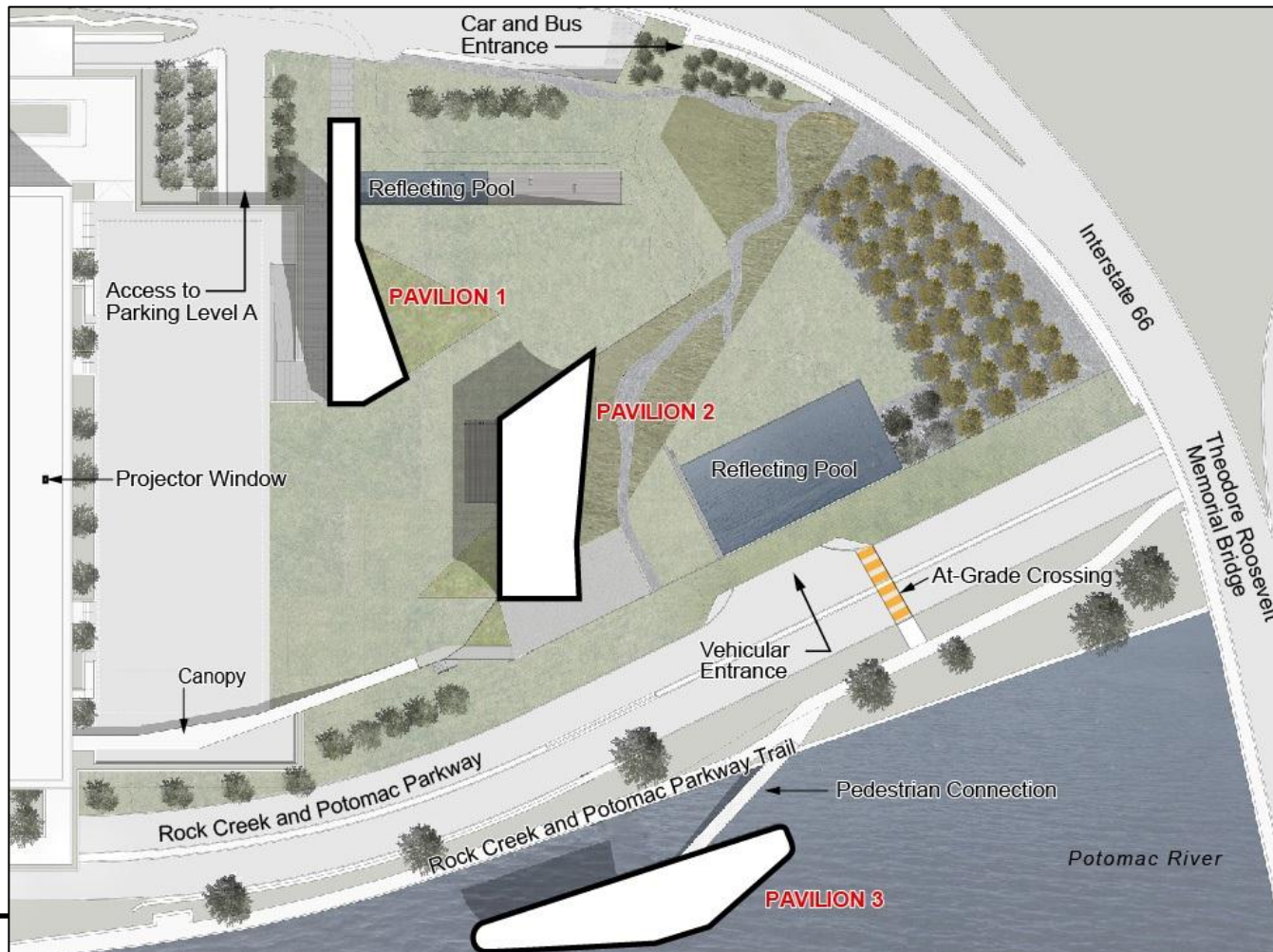




## Alternative B: Three Land-Based Pavilions

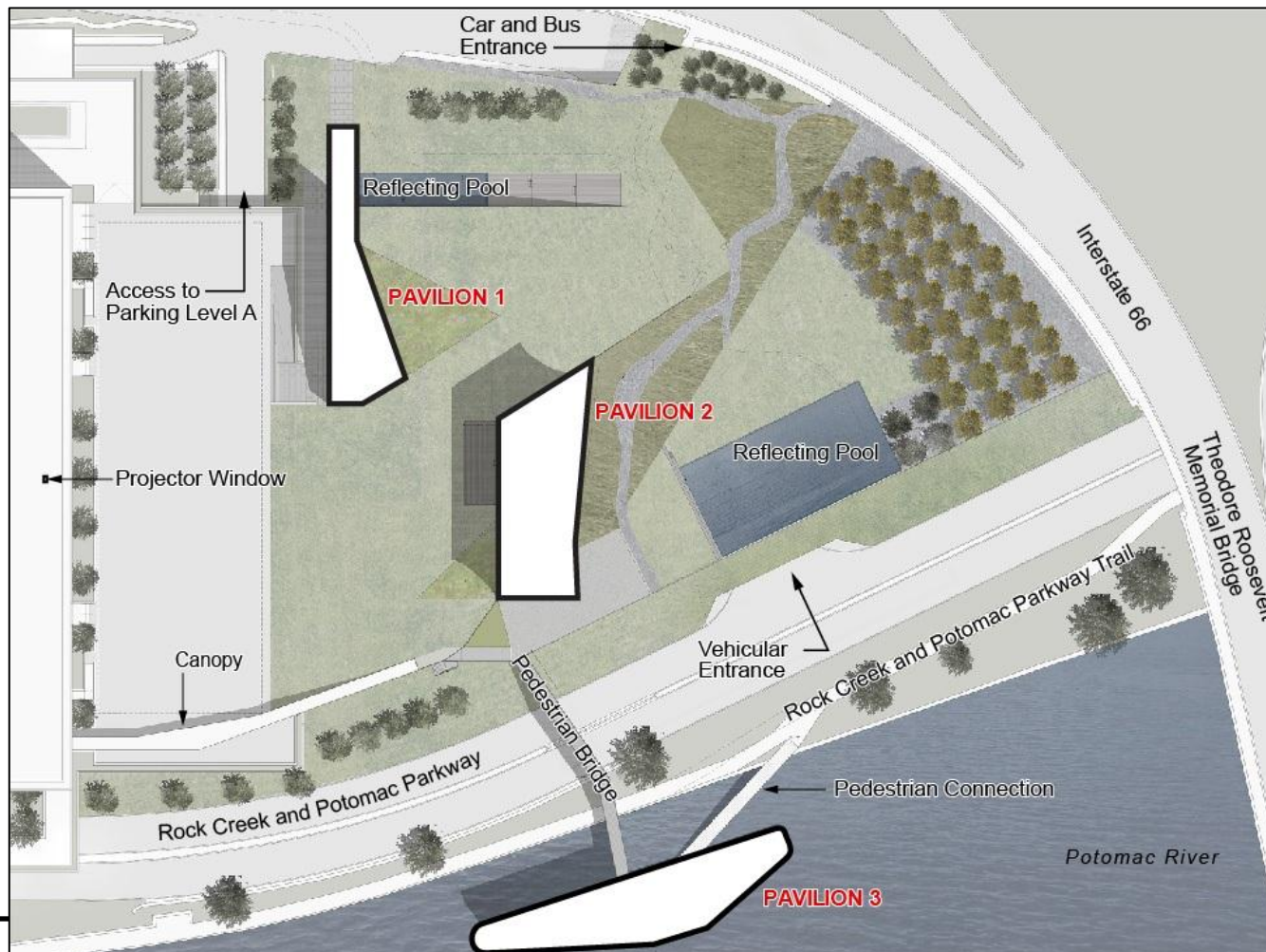


## Alternative C (Option 1): Two Land-Based Pavilions Plus River Pavilion with At-Grade Crossing





## Alternative C (Option 2): Two Land-Based Pavilions Plus River Pavilion with Bridge Crossing





## Alternative C (Option 2): Two Land-Based Pavilions Plus River Pavilion with Bridge Crossing







## UPDATE ON DESIGN MODIFICATIONS

- The design has been modified to eliminate the proposed access stairs and elevator opening located at the south end of the West Terrace.
- The revised design includes a walkway covered by a canopy (approximately 10 feet high) to provide a terrace-level connection between the existing building and the expansion.
- The revised design has less impact on the historic fabric of the Edward Durell Stone building.



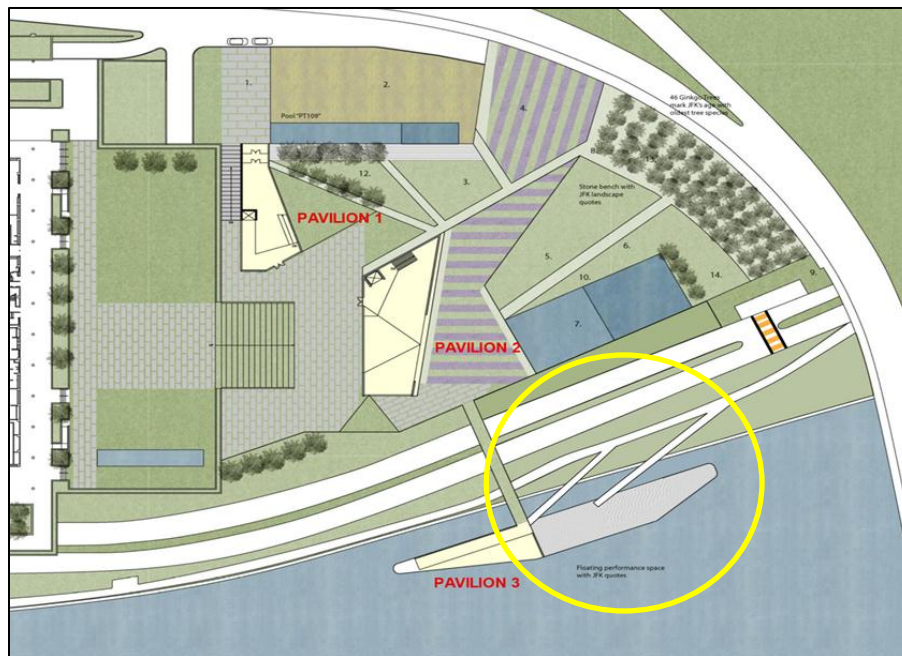
Previous design



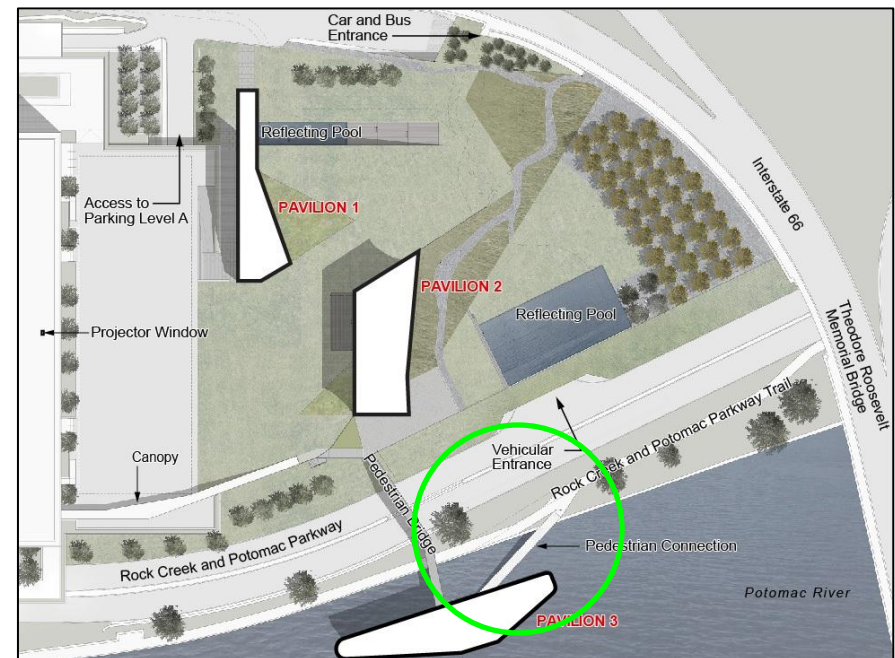
Current design

## UPDATE ON DESIGN MODIFICATIONS

- The design has been modified to reduced the number of trail spurs accessing the River Pavilion from the Rock Creek and Potomac Parkway trail.
- The revised design proposes one trail spur connection between the resources.
- The revised design has less impact on the Rock Creek and Potomac Parkway.



Previous design with two trail spurs

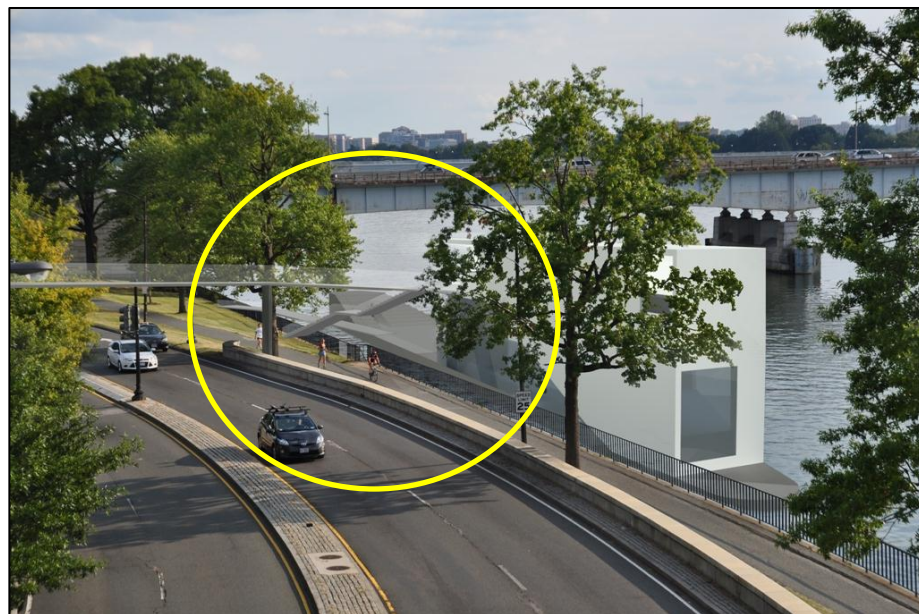


Current design with one trail spur

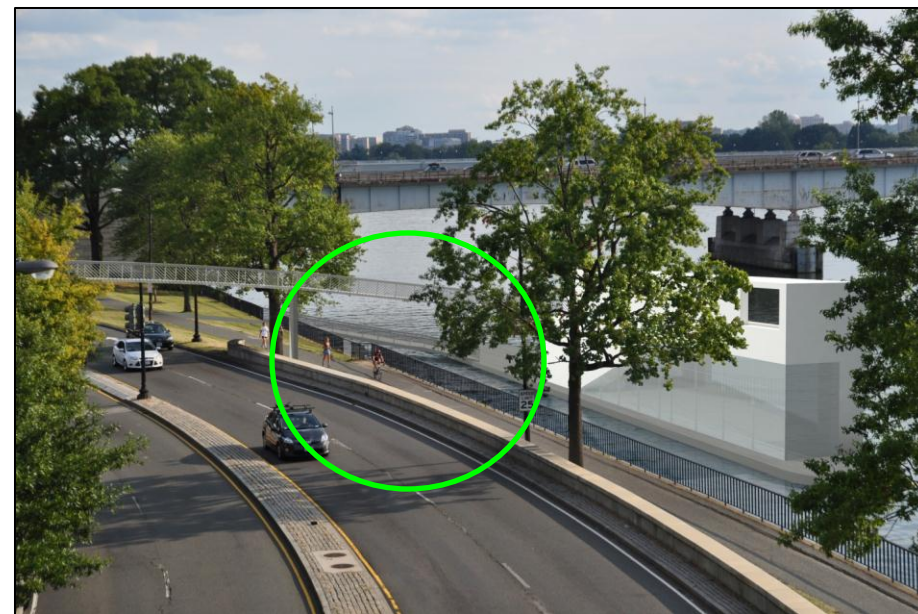




## UPDATE ON DESIGN MODIFICATIONS



Previous design with two trail spurs



Current design with one trail spur



## AREA OF POTENTIAL EFFECTS (APE)

### BUILDINGS

- 1 Kennedy Center
- 2 Old Naval Observatory
- 3 Watergate Complex

### STRUCTURES

- 4 Arlington Memorial Bridge
- 5 Lincoln Memorial

### SITES

- 6 Arlington Ridge Park

### DISTRICTS

- 7 George Washington Memorial Parkway
- 8 Rock Creek and Potomac Parkway

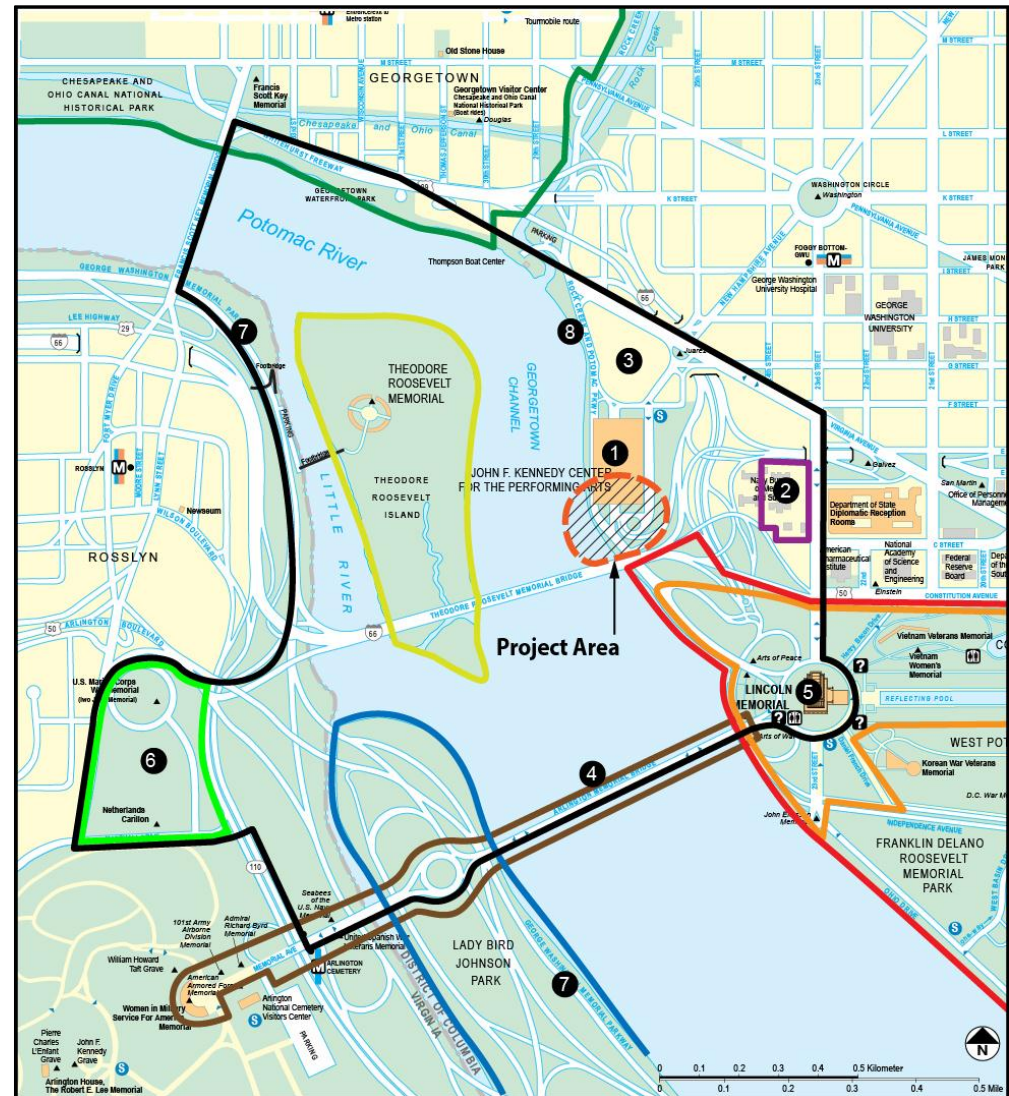
East & West Potomac Parks Historic District

Georgetown Historic District

Potomac Annex Historic District

### CULTURAL LANDSCAPES

- Lady Bird Johnson Park
- Lincoln Memorial Grounds
- Memorial Avenue Corridor
- Theodore Roosevelt Island
- Arlington Ridge Park







## BRIEF REVIEW AND DISCUSSION OF EFFECTS ANALYSIS

	Alternative A: No Action	Alternative B: Three Land-based Pavilions	Alternative C1: Two Land-based Pavilions Plus River Pavilion with At-Grade Crossing	Alternative C2: Two Land-based Pavilions Plus River Pavilion with Bridge Crossing
<b>Resource</b>				
Arlington Memorial Bridge and Related Structures	No adverse effect	No adverse effect	No adverse effect	No adverse effect
Arlington Ridge Park	No adverse effect	No adverse effect	No adverse effect	No adverse effect
East and West Potomac Parks Historic District	No adverse effect	No adverse effect	No adverse effect	No adverse effect
George Washington Memorial Parkway	No adverse effect	No adverse effect	No adverse effect	No adverse effect
Georgetown Historic District	No adverse effect	No adverse effect	No adverse effect	No adverse effect
John F. Kennedy Center for the Performing Arts	No adverse effect	<b>Adverse Effect</b> -Removal of small section of curtain wall for projector window -Panoramic views from the South and West Terrace and views of the Washington Monument and Lincoln Memorial would be interrupted by the land pavilions and the canopy	<b>Adverse Effect</b> -Removal of small section of curtain wall for projector window -Panoramic views from the South and West Terrace and views of the Washington Monument and Lincoln Memorial would be interrupted by the land pavilions and the canopy -Views from the West Terrace looking south and southwest towards the river would be interrupted by the River Pavilion	<b>Adverse Effect</b> -Removal of small section of curtain wall for projector window -Panoramic views from the South and West Terrace and views of the Washington Monument and Lincoln Memorial would be interrupted by the land pavilions and the canopy -Views from the West Terrace looking south and southwest towards the river would be interrupted by the River Pavilion



## BRIEF REVIEW AND DISCUSSION OF EFFECTS ANALYSIS

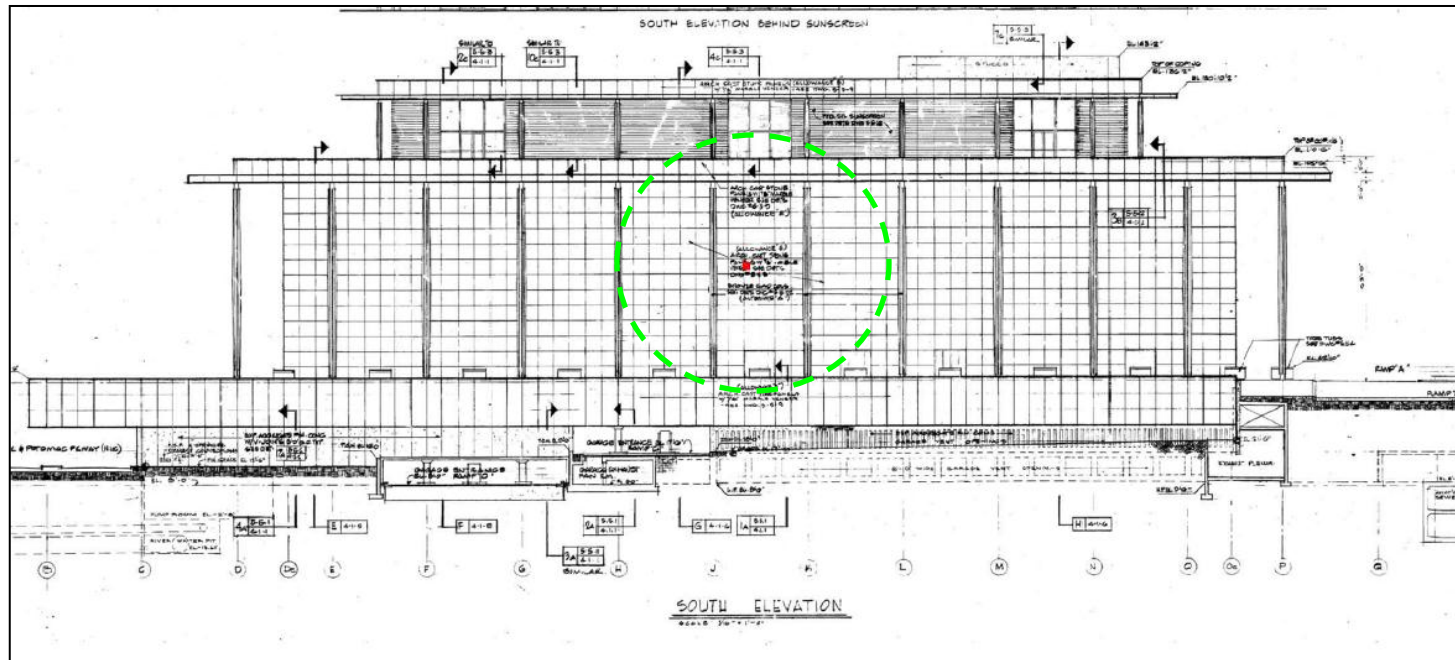
	Alternative A: No Action	Alternative B: Three Land-based Pavilions	Alternative C1: Two Land-based Pavilions Plus River Pavilion with At-Grade Crossing	Alternative C2: Two Land-based Pavilions Plus River Pavilion with Bridge Crossing
<b>Resource</b>				
Lady Bird Johnson Park	No adverse effect	No adverse effect	No adverse effect	No adverse effect
Lincoln Memorial	No adverse effect	No adverse effect	No adverse effect	No adverse effect
Lincoln Memorial grounds	No adverse effect	No adverse effect	No adverse effect	No adverse effect
Memorial Avenue corridor	No adverse effect	No adverse effect	No adverse effect	No adverse effect
Old Naval Observatory	No adverse effect	No adverse effect	No adverse effect	No adverse effect
Potomac Annex Historic District	No adverse effect	No adverse effect	No adverse effect	No adverse effect
Rock Creek and Potomac Parkway	No adverse effect	No adverse effect	<b>Adverse Effect</b> - Views of the Potomac River and Theodore Roosevelt Island from sections of the RCPP Roadway and Trail would be blocked by the River Pavilion - Trail spur would impact the perceived width and character of the RCPP Trail and would alter paving and landscaping	<b>Adverse Effect</b> - Views of the Potomac River and Theodore Roosevelt Island from sections of the RCPP Roadway and Trail would be blocked by the River Pavilion - Access bridge would extend across northbound and southbound lanes of RCPP Roadway and Trail and be a visual distraction from intended views of the Potomac River and Theodore Roosevelt Island - Trail spur would impact the perceived width and character of the RCPP Trail and would alter paving and landscaping
Theodore Roosevelt Island	No adverse effect	No adverse effect	No adverse effect	No adverse effect
Watergate	No adverse effect	No adverse effect	No adverse effect	No adverse effect





## EFFECTS ON THE KENNEDY CENTER

- *Removal of small section of curtain wall for projector window*





## EFFECTS ON THE KENNEDY CENTER

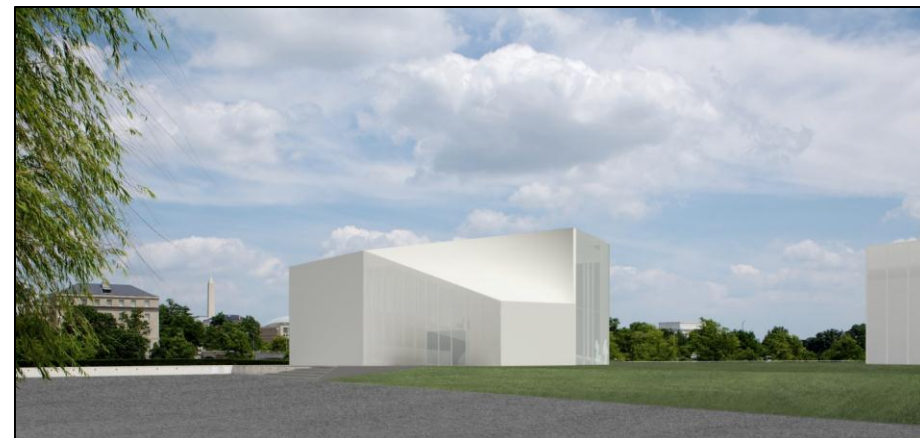
- Panoramic views from the South and West Terrace and views of the Washington Monument and Lincoln Memorial would be interrupted by the canopy and the pavilions*



New view  
looking south  
from the West  
Terrace



Existing view looking east from the South Terrace



New view looking east from the South Terrace



# Kennedy Center Expansion Project

Washington, DC

Section 106 Consulting Parties Meeting #3 – August 14, 2014



## EFFECTS ON THE KENNEDY CENTER

- Views from the West Terrace looking south and southwest towards the river would be interrupted by the River Pavilion*



Existing view looking south from the West Terrace



New view under Alternative C (Option 1)



New view under Alternative C (Option 2)

**Applies to:** Alternative C (Option 1) and Alternative C (Option 2)





## EFFECTS ON THE ROCK CREEK AND POTOMAC PARKWAY

- *Views of the Potomac River and Theodore Roosevelt Island from sections of the RCPP roadway and trail would be blocked by the River Pavilion*
- *Trail spur would impact the perceived width and character of the RCPP trail and would alter paving and landscaping*



Existing view looking north along RCPP



New view under Alternative C (Option 1)



New view under Alternative C (Option 2)

**Applies to:** Alternative C (Option 1) and Alternative C (Option 2)



# Kennedy Center Expansion Project

Washington, DC

Section 106 Consulting Parties Meeting #3 – August 14, 2014



## EFFECTS ON THE ROCK CREEK AND POTOMAC PARKWAY

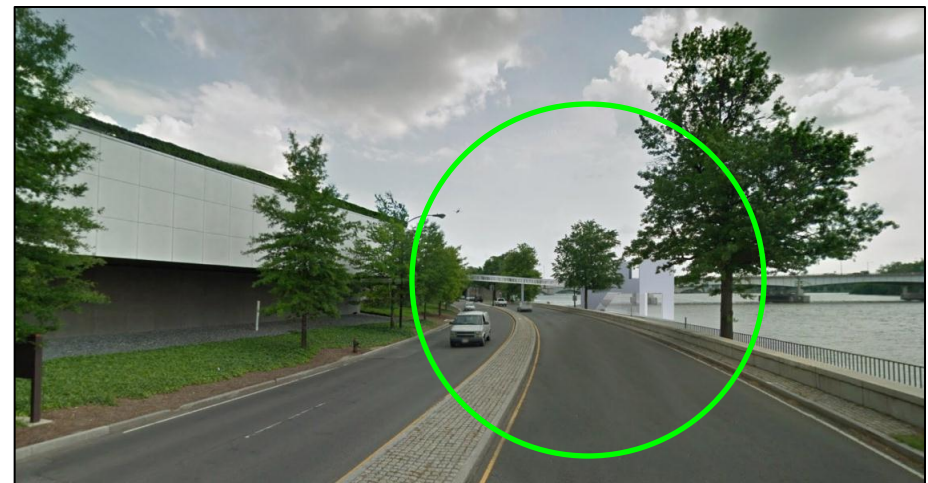
- *Views of the Potomac River and Theodore Roosevelt Island from sections of the RCPP Roadway and Trail would be blocked by the River Pavilion*
- *Access bridge would extend across northbound and southbound lanes of RCPP Roadway and Trail and be a visual distraction from intended views of the Potomac River and Theodore Roosevelt Island*



New view under Alternative C (Option 1)



Existing view looking south along RCPP



New view under Alternative C (Option 2)

**Applies to:** Alternative C (Option 1) and Alternative C (Option 2)

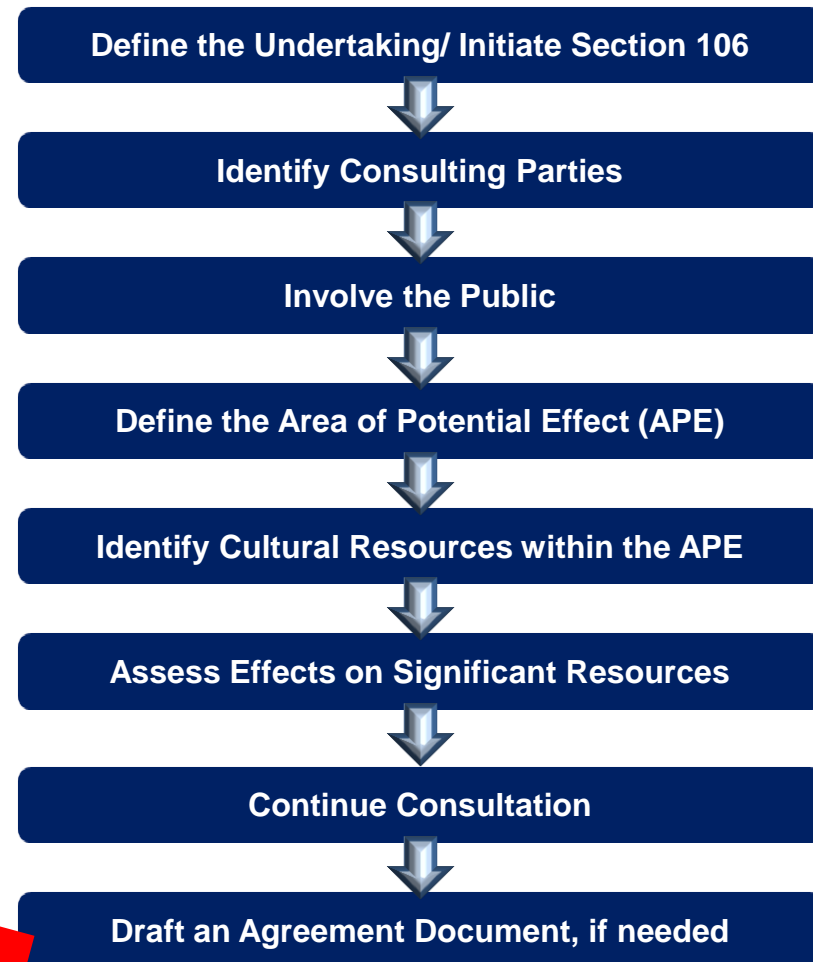


## BRIEF REVIEW AND DISCUSSION OF EFFECTS ANALYSIS

- In conclusion, the effects analysis revealed that of the proposed action alternatives for the Kennedy Center Expansion Project, *Alternative C would have the greatest adverse effect on historic properties.*
- The adverse effects would include the modification of the thin-clad marble curtain walls, a character-defining feature of the Kennedy Center, the interruption of views from the South and West Terraces of the Kennedy Center, and impacts to the Rock Creek and Potomac Parkway roadway and network of trails.
- *Under Alternative C, Option 1 and Option 2 would have similar effects; however, because of the bridge component, Option 2 would have a greater adverse effect on the Rock Creek and Potomac Parkway.*



## SECTION 106 OF THE NATIONAL HISTORIC PRESERVATION ACT (NHPA)







## MINIMIZATION AND MITIGATION DISCUSSION





## QUESTIONS/COMMENTS AND NEXT STEPS

- Post presentation materials to NPS Planning, Environment and Public Comment (PEPC) site: <http://parkplanning.nps.gov/kennedycenter>
- Collect public comments on the S106 Assessment of Effects report via PEPC. Comment period will extend until September 7, 2014.
- Prepare Section 106 Memorandum of Agreement.