

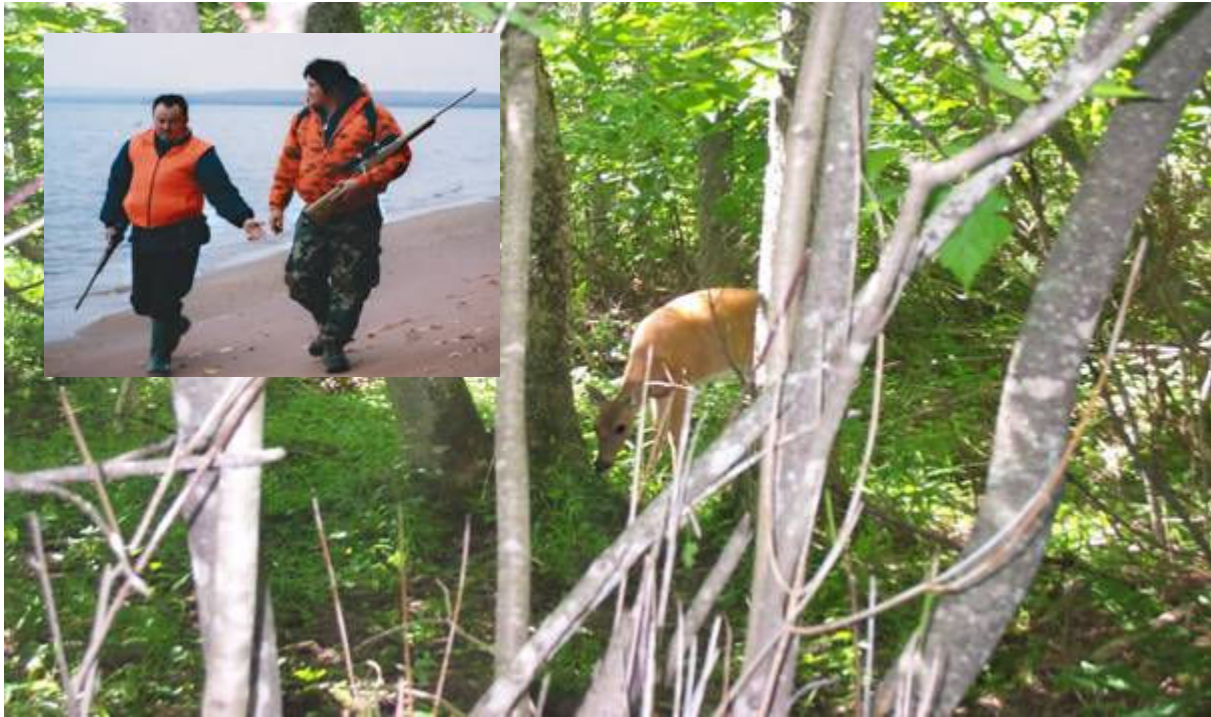
Apostle Islands National Lakeshore

U.S. Department of the Interior



Managing Hunting and Trapping in Apostle Islands NL

The legislation that created the Apostle Islands National Lakeshore mandates hunting, fishing, and trapping in accordance with the laws of Wisconsin and the United States. The National Park Service is working with state and tribal partners to develop a Harvestable Wildlife Plan for the Apostle Islands National Lakeshore to help provide direction for managing the park's huntable and trappable wildlife.



Deer on Sand Island
Hunting on Oak Island)

(Inset:

Deer Hunting

- The islands within the park are designated as Deer Management Unit 79 by the Wisconsin Department of Natural Resources.
- Deer hunting has been limited to a special muzzleloader hunt during the month of October on Oak and Basswood Islands since 1983. Sand Island was opened to muzzleloader deer hunting in 2004.
- The current planning process will look at various alternatives, including expanding deer hunting opportunities within the park.

Other Hunting and Trapping

- The park has been open to hunting and trapping for other species consistent with current state regulations since it was established in 1970.

Current Issues in Wildlife Management

- There has been recent colonization and rapid increases in populations of deer on islands that historically had few to no deer.
- Current levels of hunting have proven inadequate to prevent damage to rare plant communities.
- The park needs an effective way to obtain timely information on harvest levels and hunting and trapping activity.

Species Included in the Harvestable Wildlife Plan

- white-tailed deer
- black bear
- furbearers (e.g., otter, fisher, mink, beaver)
- small game
- waterfowl