

# Cape Lookout National Seashore North Carolina

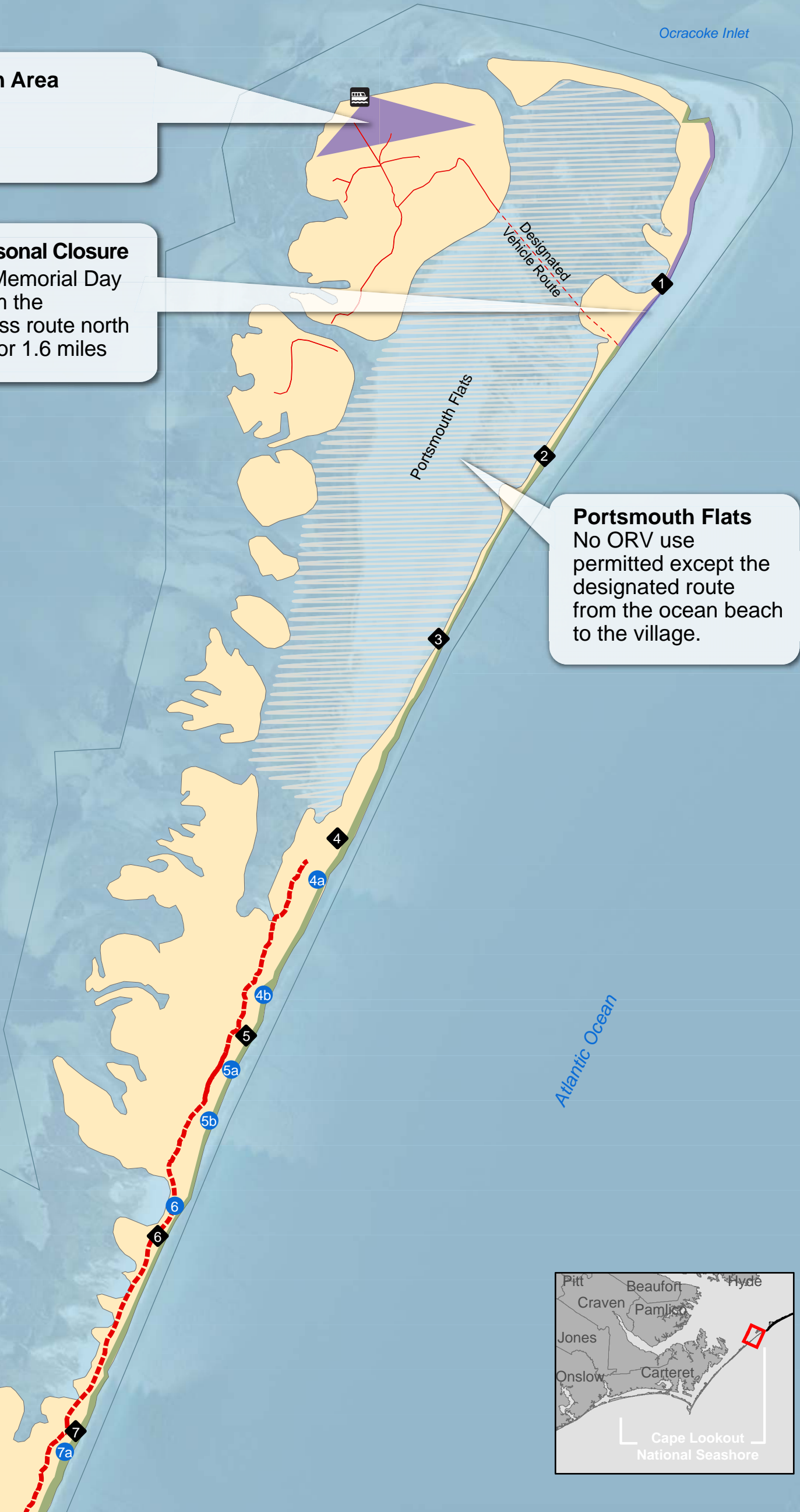
National Park Service  
U.S. Department of the Interior



**Year-Round Pedestrian Area**  
**Portsmouth Village**

**Portsmouth Beach, Seasonal Closure**  
(from Friday preceding Memorial Day through Labor Day), from the Portsmouth Village access route north to the demarcation line for 1.6 miles

**Portsmouth Flats**  
No ORV use permitted except the designated route from the ocean beach to the village.



North Core Banks Map 1 of 3

Alternative D

ORV Route - Open during ORV Season Only	Passenger Ferry	mile marker	Ranger Station
ORV Route - Locally Known as the Backroad	Vehicle Ferry	Vehicle ramp Location	Tidal Flat
Pedestrian-only Areas	Parking	Kayak Access	0 0.5 1 1.5 Miles North
Cape Lookout National Seashore Boundary	Restrooms	Sanitary Disposal Station	

\* Areas open to ORV use are always subject to temporary closures for species management or safety concerns.