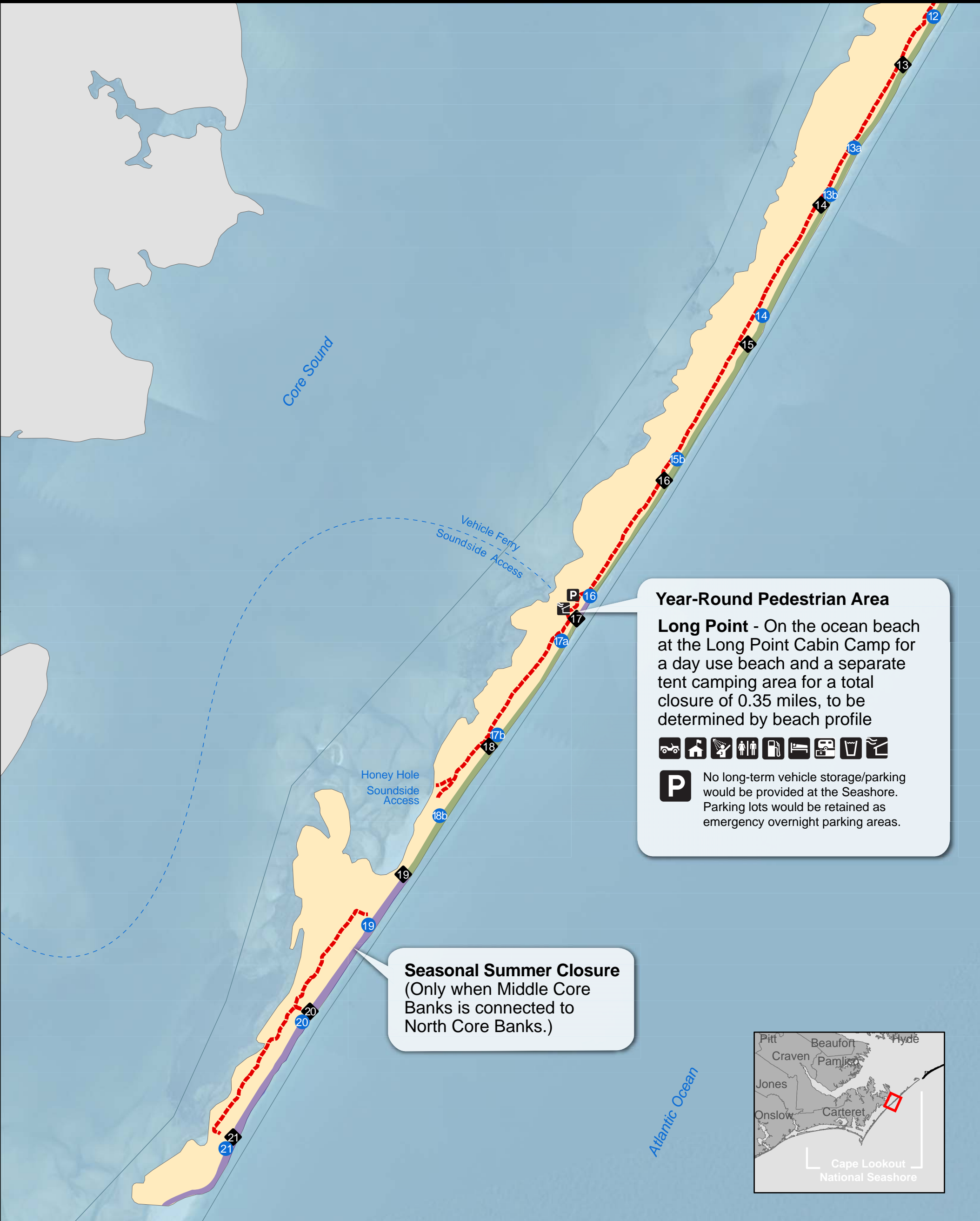


Cape Lookout National Seashore North Carolina

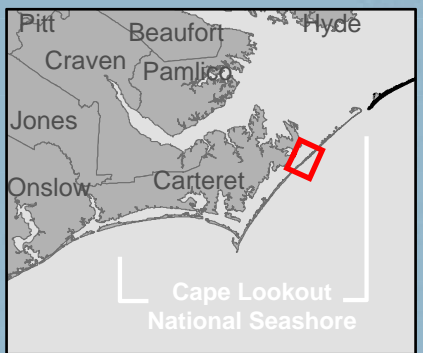
National Park Service
U.S. Department of the Interior



Year-Round Pedestrian Area
Long Point - On the ocean beach at the Long Point Cabin Camp for a day use beach and a separate tent camping area for a total closure of 0.35 miles, to be determined by beach profile

P No long-term vehicle storage/parking would be provided at the Seashore. Parking lots would be retained as emergency overnight parking areas.

Seasonal Summer Closure
 (Only when Middle Core Banks is connected to North Core Banks.)



North Core Banks Map 3 of 3

Alternative D

ORV Route - Open during ORV Season Only	Passenger Ferry	Showers	Sanitary Disposal Station	mile marker	
ORV Route - Locally Known as the Backroad	Vehicle Ferry	Restrooms	Drinking Water	Vehicle ramp Location	
Pedestrian-only Areas	Parking	Gas Station	Shade Shelter		
Cape Lookout National Seashore Boundary	Ranger Station	Lodging			

0 0.5 1 1.5 Miles

* Areas open to ORV use are always subject to temporary closures for species management or safety concerns.

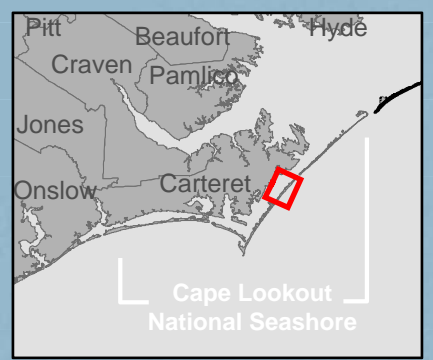


Year-Round Pedestrian Area

Great Island - On the ocean beach at the Great Island Cabin Camp for a day use beach and a separate tent camping area for a total closure of 1.9 miles, to be determined by beach profile.



P No long-term vehicle storage/parking would be provided at the Seashore. Parking lots would be retained as emergency overnight parking areas.



South Core Banks Map 1 of 3

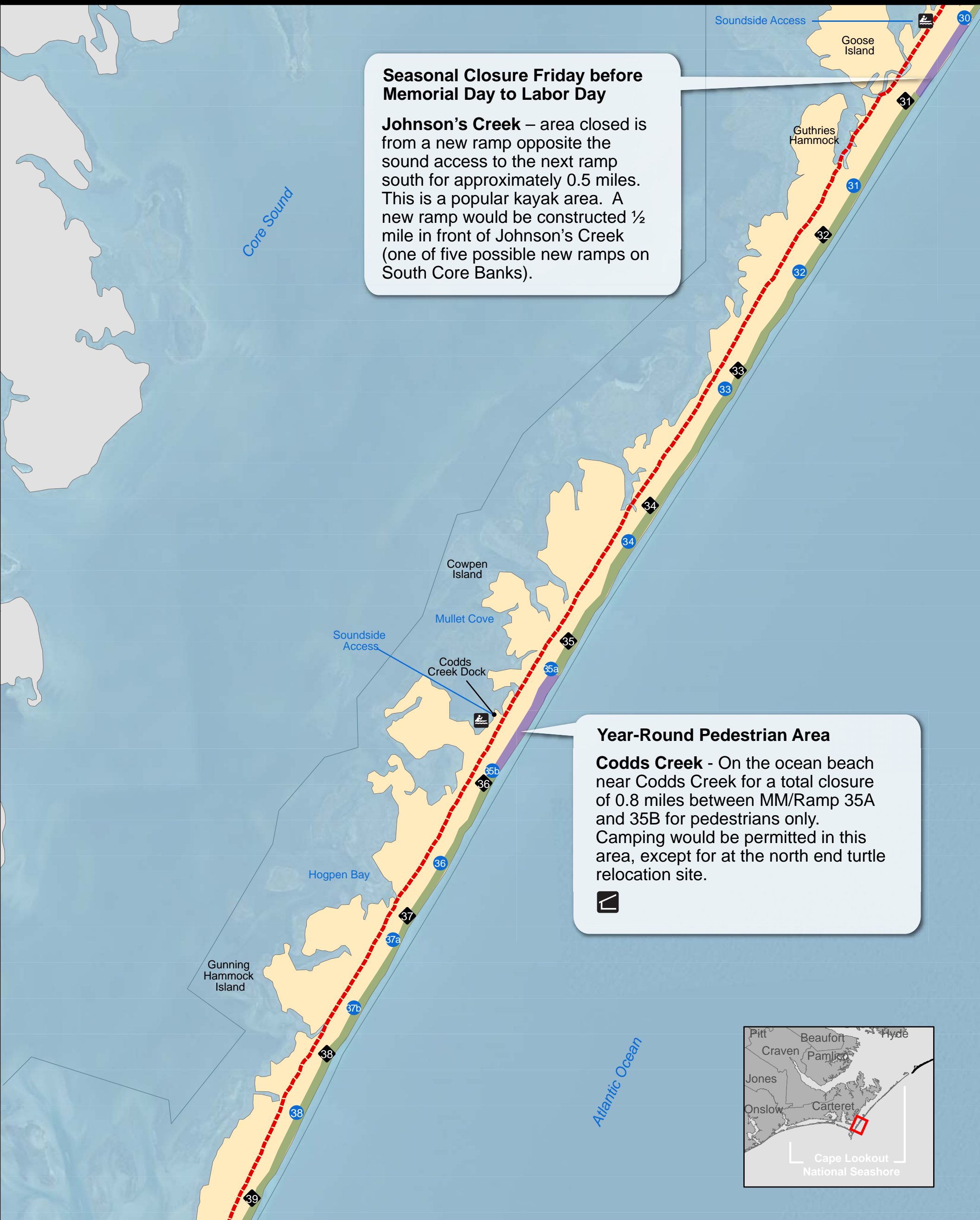
Alternative D

ORV Route	Passenger Ferry	Showers	Sanitary Disposal Station	7 mile marker	
ORV Route - Locally Known as the Backroad	Vehicle Ferry	Restrooms	Drinking Water	7a Vehiclerramp Location	
Pedestrian-only Areas	Parking	Gas Station	Shelter	0 0.5 1 1.5 Miles	
Cape Lookout National Seashore Boundary	Ranger Station	Lodging	Kayak Access		
		Shade Shelter			

* See ORV Plan for open/closed dates; areas open to ORV use are always subject to temporary closures for species management or safety concerns.

Cape Lookout National Seashore North Carolina

National Park Service
U.S. Department of the Interior

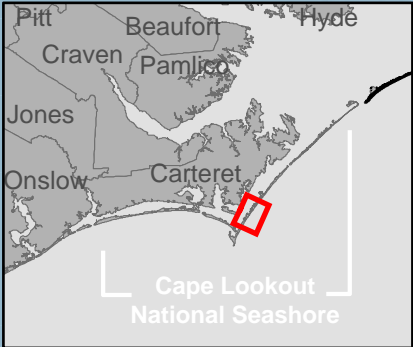


Seasonal Closure Friday before Memorial Day to Labor Day

Johnson's Creek – area closed is from a new ramp opposite the sound access to the next ramp south for approximately 0.5 miles. This is a popular kayak area. A new ramp would be constructed ½ mile in front of Johnson's Creek (one of five possible new ramps on South Core Banks).

Year-Round Pedestrian Area

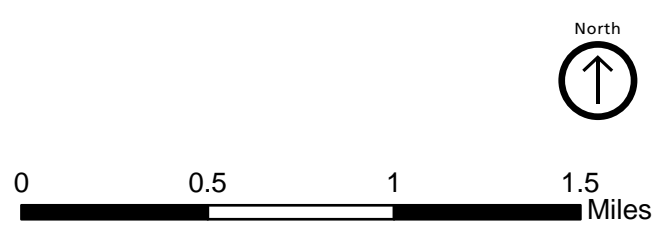
Codds Creek - On the ocean beach near Codds Creek for a total closure of 0.8 miles between MM/Ramp 35A and 35B for pedestrians only. Camping would be permitted in this area, except for at the north end turtle relocation site.



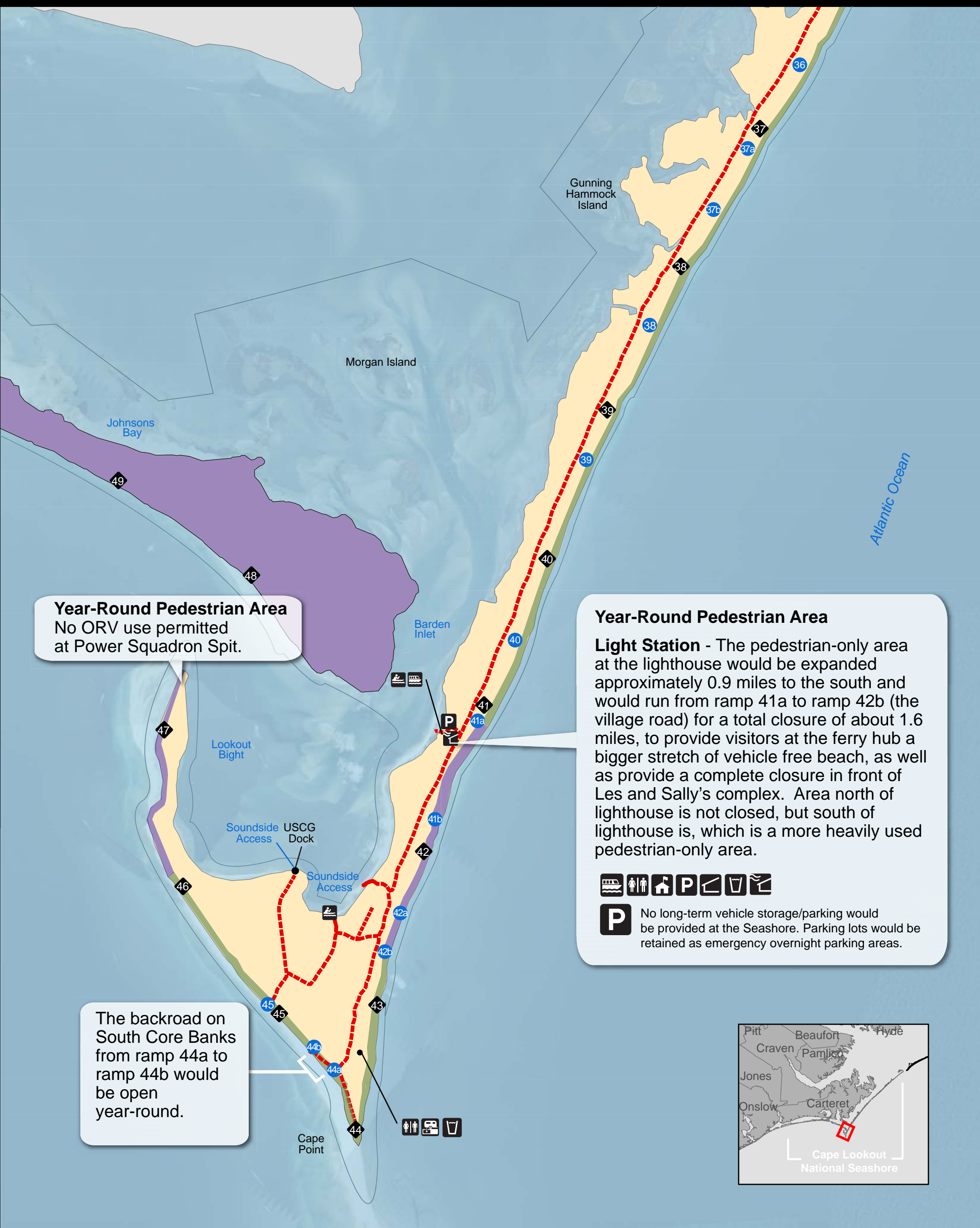
South Core Banks Map 2 of 3

Alternative D

- ORV Route
- ORV Route - Locally Known as the Backroad
- Pedestrian-only Areas
- Cape Lookout National Seashore Boundary
- Passenger Ferry
- Vehicle Ferry
- Parking
- Shelter
- mile marker
- Vehicle ramp Location
- Kayak Access



* See ORV Plan for open/closed dates; areas open to ORV use are always subject to temporary closures for species management or safety concerns.

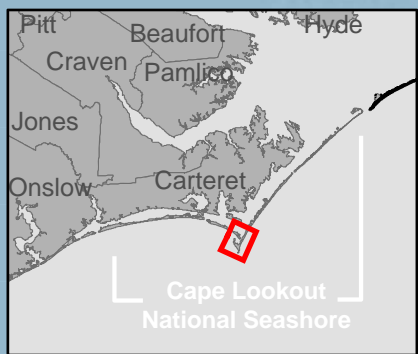


Year-Round Pedestrian Area
No ORV use permitted at Power Squadron Spit.

Year-Round Pedestrian Area
Light Station - The pedestrian-only area at the lighthouse would be expanded approximately 0.9 miles to the south and would run from ramp 41a to ramp 42b (the village road) for a total closure of about 1.6 miles, to provide visitors at the ferry hub a bigger stretch of vehicle free beach, as well as provide a complete closure in front of Les and Sally's complex. Area north of lighthouse is not closed, but south of lighthouse is, which is a more heavily used pedestrian-only area.

No long-term vehicle storage/parking would be provided at the Seashore. Parking lots would be retained as emergency overnight parking areas.

The backroad on South Core Banks from ramp 44a to ramp 44b would be open year-round.



South Core Banks Map 3 of 3

Alternative D

- ORV Route
- ORV Route - Locally Known as the Backroad
- Pedestrian-only Areas
- Cape Lookout National Seashore Boundary
- Passenger Ferry
- Vehicle Ferry
- Parking
- Kayak Access
- mile marker
- Vehicle ramp Location
- Restrooms
- Sanitary Disposal Station

- Ranger Station
 - Shelter
 - Drinking Water
 - North
- 0 0.5 1 1.5 Miles

* See ORV Plan for open/closed dates; areas open to ORV use are always subject to temporary closures for species management or safety concerns.