

WELCOME

TO THE PUBLIC SCOPING MEETING FOR THE

CONSTITUTION GARDENS REHABILITATION PROJECT



AGENDA

5:00 – 5:15pm Sign-in + Open House

5:15 – 5:30pm Welcome + Presentation

- Project Background
- Purpose & Need
- NEPA Process
- Section 106 Process
- Draft Alternatives
- Potential Impact Topics
- Opportunities to Comment

5:30 – 7:00pm Open House



PROJECT BACKGROUND

The National Park Service (NPS), in partnership with The Trust for the National Mall, is embarking on the rehabilitation of Constitution Gardens, located between the Vietnam Veterans Memorial and 17th Streets N.W. on the National Mall in Washington, D.C.

Constitution Gardens was designed as a pastoral landscape with a naturalistic appearing lake; a quiet oasis removed from the bustle of the capital. The park has been an underused area of the National Mall and the level and quality of visitor experience is not what is desired for key location on the National Mall.



PROJECT BACKGROUND

NATIONAL MALL PLAN

According to the National Mall Plan:

“Constitution Gardens will be a restful, multipurpose visitor destination with opportunities for entertainment, enjoyment, and recreation. The Area will be a pleasant place for visitors to relax as they tour the National Mall”

Proposed Rehabilitation/Upgrades include:

- Improve present condition
- Amend poor soils
- Upgrade pedestrian circulation system
- Reconstruct lake to be self-sustaining
- Develop multi-purpose visitor facility at the east end of the lake
- Potentially relocate and adaptively reuse the canal Lockkeeper's House



NATIONAL MALL DESIGN COMPETITION



Three-stage process that took place in 2011 and 2012:

- Stage 1: Portfolio Review
- Stage 2: Team Qualifications
- Stage 3: Design Concept

Criteria for assessing competition submittals:

- Respond to the vision for the National Mall Plan
- Provide environmental, functional, and operational sustainability
- Create a welcoming environment
- Enhance the visitor experience
- Respect for historical context

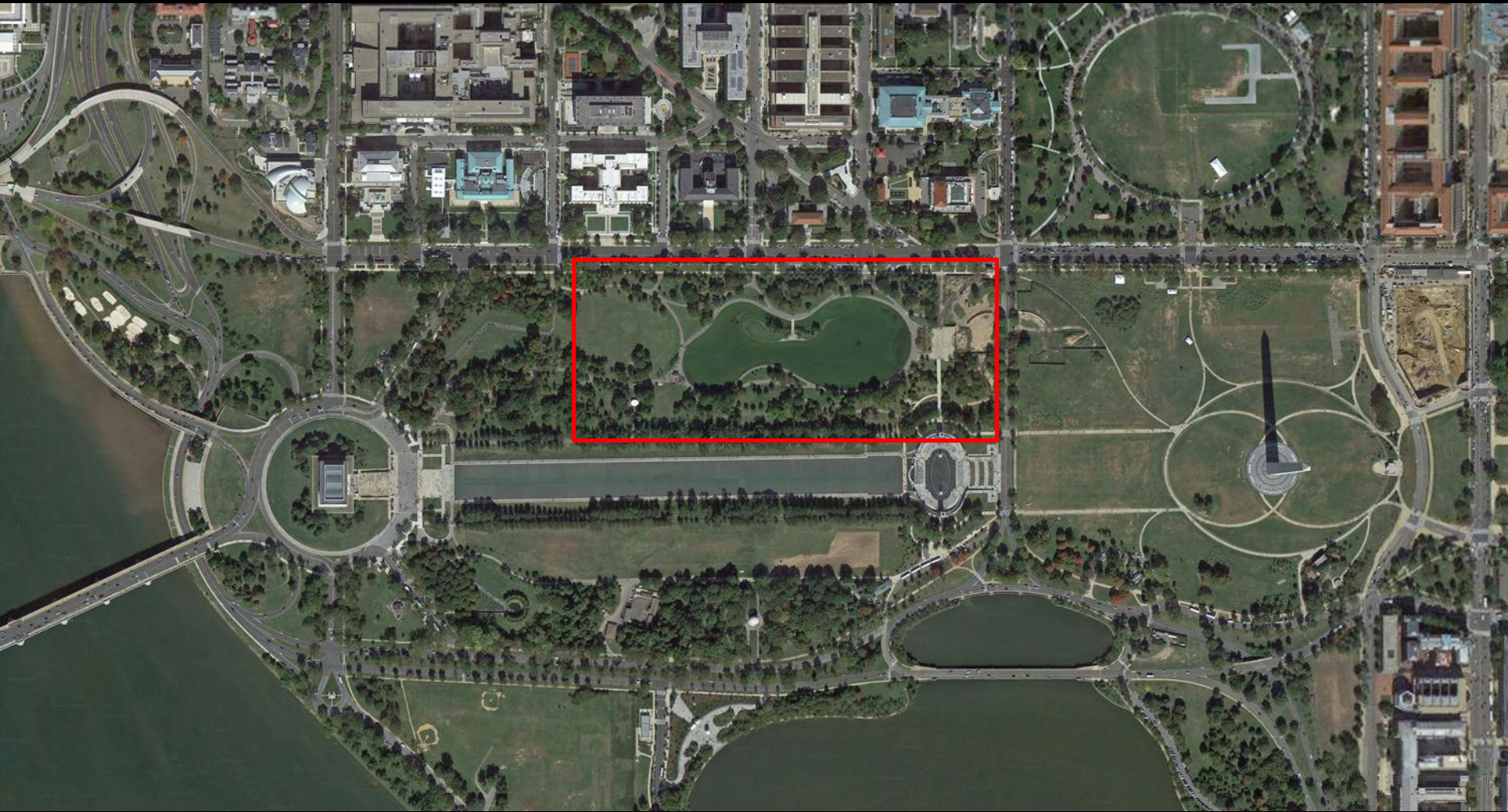


WINNING DESIGN BY

**PWP Landscape Architecture &
Rogers Partners**



PROJECT AREA



PURPOSE

The purpose of the project is to rehabilitate Constitution Gardens to improve the functionality, ecology, visitor services, and accessibility of the area. The project implements the National Mall Plan, which calls for the rehabilitation of Constitution Gardens to improve resource conditions and circulation, relocate the canal lockkeeper's house, provide flexible opportunities for relaxation, entertainment, and recreation, as well as improved visitor service facilities.



NEED

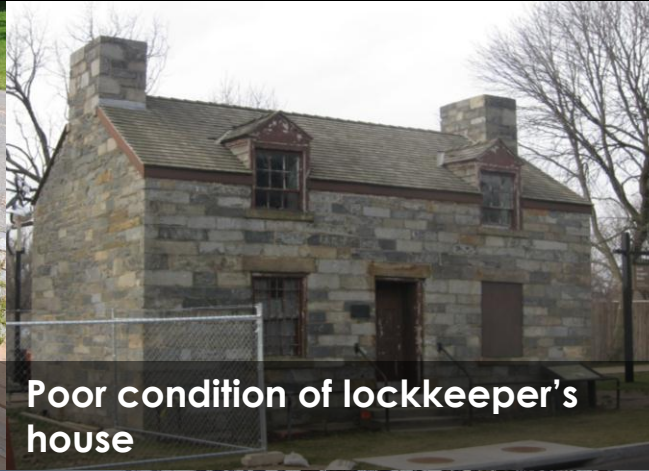
Action is needed because Constitution Gardens was never completed as a visitor services destination, the lake water quality is poor, the landscape suffers from poor soil conditions, there are pedestrian and vehicular circulation challenges, and it remains an underused opportunity. Constitution Gardens today does not achieve its original design intent, the vision of the National Mall Plan, or what the public expects in this key location on the National Mall.



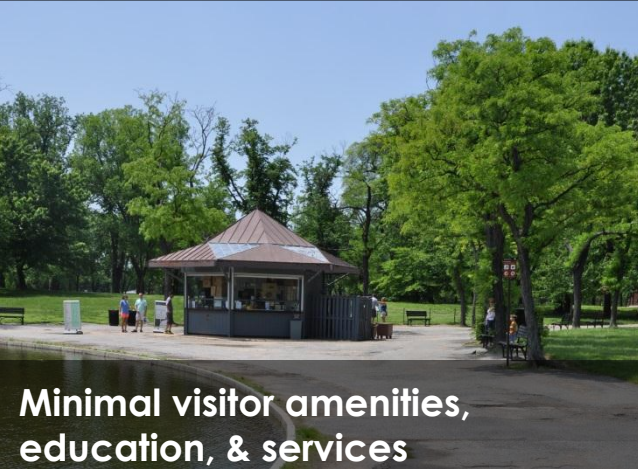
CURRENT CONDITIONS



Poor water quality



Poor condition of lockkeeper's house



Minimal visitor amenities, education, & services



Poor pedestrian access & circulation



Unhealthy trees

LAWS & PROCEDURES



NEPA NATIONAL
ENVIRONMENTAL
POLICY ACT

NHPA NATIONAL HISTORIC
PRESERVATION ACT
(SECTION 106)



NEPA PROCESS

POLICY

NEPA National Environmental Policy Act

THE NATIONAL ENVIRONMENTAL
POLICY ACT OF 1969, AS AMENDED
(42 U.S.C. 4321 ET SEQ.)

CEQ Council on Environmental Quality

"REGULATIONS FOR IMPLEMENTING
THE PROCEDURAL PROVISIONS OF
NEPA" (40 CFR 1500-1508).

DO-12 Department of the Interior, Director's Order 12

DIRECTOR'S ORDER 12:
CONSERVATION PLANNING,
ENVIRONMENTAL IMPACT ANALYSIS,
AND DECISION-MAKING

PROCESS

1. **PUBLIC NOTIFICATION**
2. DEFINE PURPOSE & NEED – FOR THE PROPOSED ACTION, DETERMINE PROJECT AREA, DEFINE FRAMEWORK WITHIN WHICH REASONABLE ALTERNATIVES CAN BE DEVELOPED, AND DEVELOP DRAFT ALTERNATIVES
3. INTERNAL AND **EXTERNAL SCOPING - TO INTRODUCE PROJECT AND DRAFT ALTERNATIVES AND IDENTIFY ISSUES**
4. **PUBLIC COMMENT PERIOD ON DRAFT ALTERNATIVES**
5. DATA COLLECTION – PERFORM RESOURCE INVENTORY AND ANALYSIS, DETERMINE RESOURCE TOPICS AFFECTED BY THE PROPOSED ACTION, AND INITIATE DATA COLLECTION/ RESEARCH NEEDED TO CARRY IMPACT ANALYSIS FORWARD
6. DESCRIBE THE AFFECTED ENVIRONMENT, REFINE ALTERNATIVES, AND PREPARE IMPACT ANALYSIS OF AFFECTED RESOURCE TOPICS
7. PREPARE DRAFT EA FOR INTERNAL AGENCY REVIEW, PREPARE FINAL EA FOR PUBLIC COMMENT
8. **RELEASE EA FOR 30-DAY PUBLIC COMMENT PERIOD**
9. REVIEW ALL PUBLIC COMMENTS RECEIVED ON THE EA AND RESPOND TO COMMENTS
10. PREPARE AND FINALIZE APPROPRIATE DECISION DOCUMENT



POTENTIAL IMPACT TOPICS

- SOILS
- VEGETATION
- WATER QUALITY
- CULTURAL RESOURCES (CULTURAL LANDSCAPES + HISTORIC STRUCTURES)

- VISITOR USE + EXPERIENCE
- SOCIOECONOMICS
- CIRCULATION + TRANSPORTATION
- PARK MANAGEMENT + OPERATIONS



NHPA SECTION 106 PROCESS

POLICY

NHPA National Historic Preservation Act

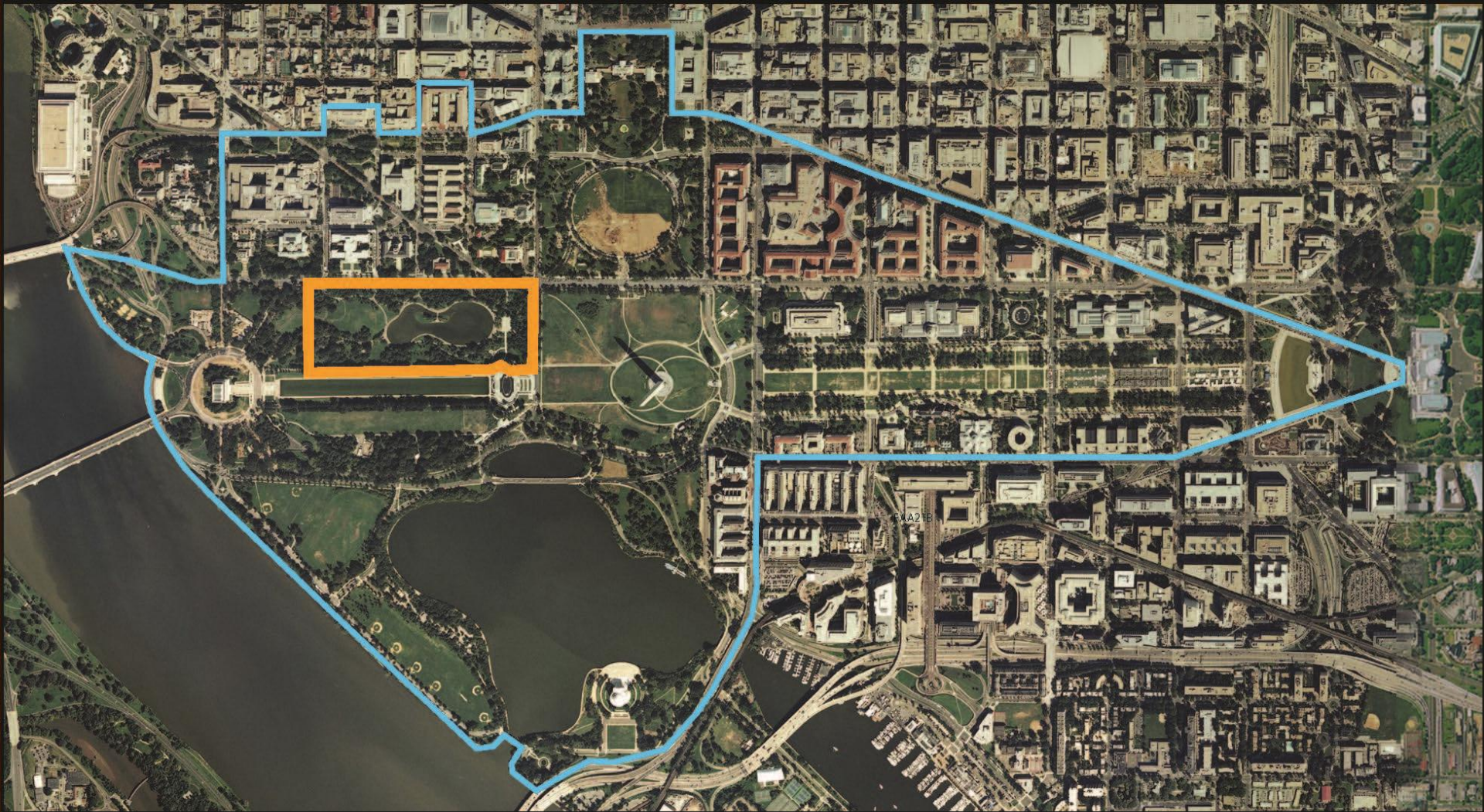
SECTION 106
REGULATIONS, 36 CFR
PART 800

PROCESS

1. DEFINE UNDERTAKING / INITIATE SECTION 106
2. IDENTIFY CONSULTING PARTIES
- 3. INVOLVE THE PUBLIC**
4. DEFINE AREA OF POTENTIAL EFFECT (APE)
5. IDENTIFY SIGNIFICANT CULTURAL RESOURCES IN APE
6. ASSESS EFFECTS ON SIGNIFICANT RESOURCES
7. APPLY CRITERIA OF ADVERSE EFFECT
8. CONTINUE CONSULTATION
9. DRAFT AGREEMENT DOCUMENT, IF NEEDED



DRAFT AREA OF POTENTIAL EFFECT



LEGEND

-  Draft Area of Potential Effect
-  Project Area

NORTH



NO ACTION ALTERNATIVE

Current conditions would persist:

- Poor water quality in Lake
- Location and poor condition of Lockkeeper's house
- Poor soils and unhealthy trees and landscape
- Poor pedestrian and vehicular access & circulation
- Minimal visitor amenities, education and services



LEGEND

	West End Concession		Unhealthy Trees and Landscape		Lockkeeper's House
---	---------------------	---	-------------------------------	---	--------------------

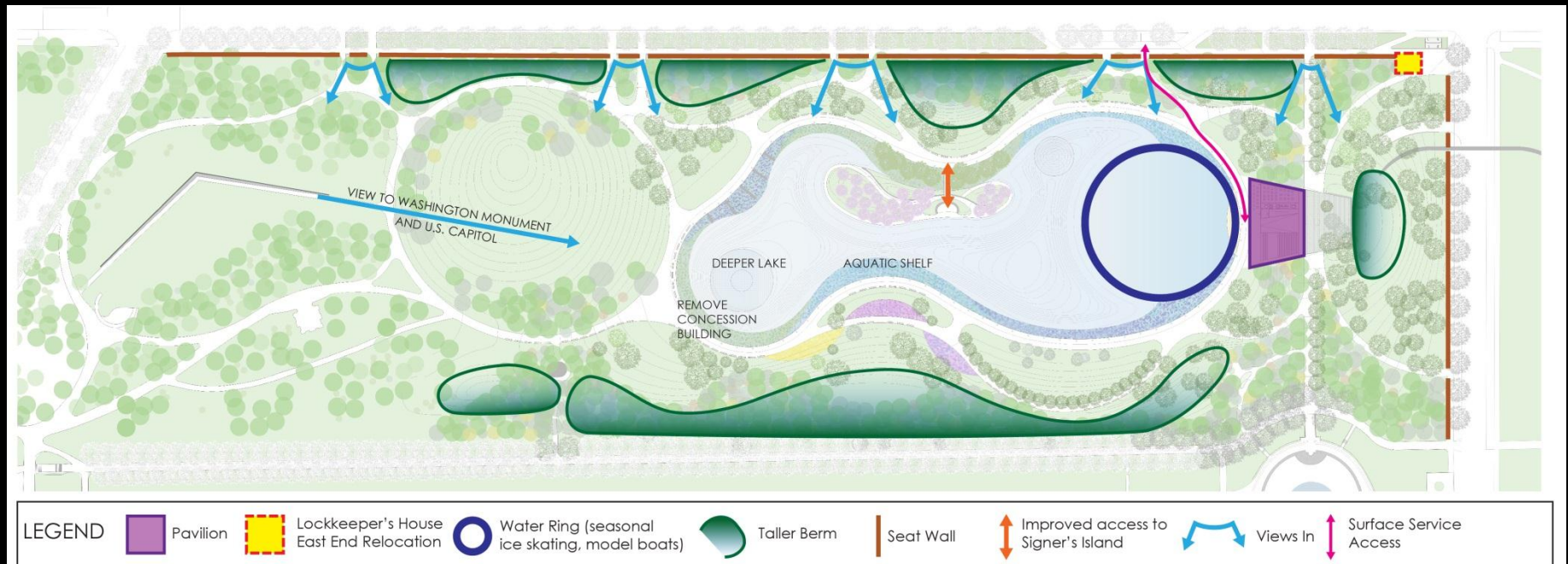
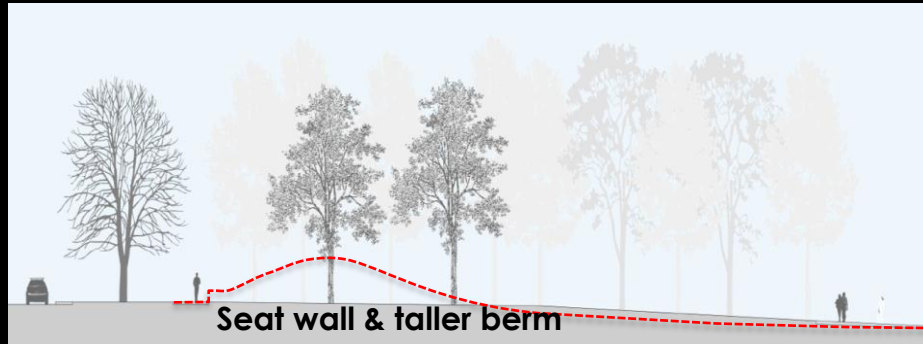


ELEMENTS COMMON TO ALL ACTION ALTERNATIVES

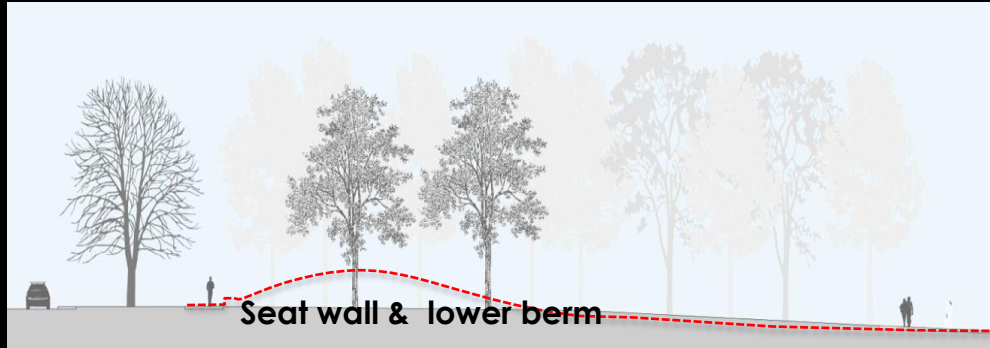
- 
- A background photograph of a paved path in a park, likely the National Mall in Washington D.C. Several people are walking away from the camera. The path is lined with trees and greenery. In the distance, the US Capitol building is visible. The image is slightly faded to allow the text to be read clearly.
- Respect 1976 SOM design concept
 - Improve aesthetic and health condition of lake and landscape
 - Improve pedestrian experience
 - Provide visitor Pavilion, restrooms and visitor services
 - Protect Virginia Avenue view corridor
 - Provide protection from street noise
 - Enlarge curb radius at Constitution /17th
 - Add bike share station
 - Create a lake ring that allows walking, fishing, skating and model boating
 - Rehabilitate landscape on Signers Island & improve access to island
 - Provide for valet parking for events
 - Accommodate tour bus drop off
 - Enhance connection to WWII Memorial



DRAFT ALTERNATIVE 1: SUSTAINABLE GARDEN



DRAFT ALTERNATIVE 2: SOCIAL PARK



OPPORTUNITIES TO COMMENT

YOUR COMMENTS ARE ESSENTIAL TO THIS PROJECT. WE WOULD LIKE TO RECEIVE COMMENTS ON THE FOLLOWING:

- DRAFT ALTERNATIVES
- OTHER ALTERNATIVES
- POTENTIAL IMPACTS
- SITE SPECIFIC CONCERNS



OPPORTUNITIES TO COMMENT

YOUR COMMENTS ARE ESSENTIAL TO THIS PROCESS.

Please submit comments by **June 5, 2014** at:

www.parkplanning.nps.gov/COGA

OR MAIL TO:

ATTN: Constitution Gardens Rehabilitation
Superintendent
National Mall and Memorial Parks
900 Ohio Drive, SW
Washington, DC 20024

