



Rancho Corral de Tierra Interim Trail Plan

Introduction

The National Park Service (NPS) is developing an Interim Trail Plan for Rancho Corral de Tierra (Rancho) in San Mateo County, which is part of the Golden Gate National Recreation Area (GGNRA). The 3,800-acre property was acquired by the National Park Service in December 2011 from the Peninsula Open Space Trust (POST). Rancho is home to many informal trails that have evolved over time, prior to NPS acquisition of the property. Rancho is rich in natural resources and ideally situated to provide a variety of recreational opportunities.

When NPS acquired Rancho, trail use designations were established per current use of the park taking into consideration a variety of factors related to the presence of sensitive resources, safety, and existing conditions of the trails. These uses have been in place since December 2011. This project will establish the official Interim Trail Plan for Rancho until a Long-Range Trail Master Plan is completed in the next three to five years. GGNRA will conduct environmental compliance for the Interim Trail Plan, which will confirm uses including hiking, bicycling, and horseback riding, for the designated network of existing trails. This will include a public review and comment period. The Interim Trail Plan does not address or regulate dog walking activities and defers to the Dog Management Plan.

Once the Interim Trail Plan is established, NPS will begin to develop a more comprehensive Long-Range Trail Master Plan, which will build upon the Interim Trail Plan, identify opportunities for new trail connections and networks within the property and with adjacent lands, and reevaluate permitted recreational uses for each trail segment. The Long-Range Trail Master Plan will include extensive public outreach, coordination with partner agencies, and long term visioning for future uses of this property. NPS intends to prepare this document in the next three to five years. In addition, NPS will begin environmental compliance on two new trail head locations to provide public access to Rancho. The proposed trail heads will be incorporated into the Long-Range Trail Master Plan but will be standalone projects with their own public outreach schedule.

Purpose

The purpose of the proposed plan is to confirm a well-functioning network of trails, identify which trails will be maintained by the NPS, minimize use of and establishment of social trails, and to enhance experience of Rancho while preserving the area's resources. These goals are in line with the 2014 General Master Plan (GMP), which stresses the importance of providing diverse recreational opportunities heavily reliant on a system of trails (GMP, 1:S-ii). The Interim Trail Plan would also provide guidance for the management of trails in Rancho until the Long-Range Trail Master Plan is completed. For the Interim Trail Plan to be successful, it must meet the following objectives:

- Improve the efficiency of trail management by identifying and designating official trails for use by visitors and maintenance by the NPS.
- Establish official trails names to aid park visitors and improve management.
- Assign acceptable uses for trails to avoid conflicting uses or improper use of park land.

Need

Present conditions include a vast network of informal trails that receive frequent use by the local community as well as a growing number of new users. The Rancho trail network is an inherited system of informal trails that were not planned and received minimal maintenance prior to NPS management. Many of the trails are steep and eroding, and in need of improvements and/or realignment. The Interim Trail Plan proposes to recognize 16 miles of trails that will be maintained at Rancho which will allow for strategic trail management. Prior to becoming part of the GGNRA, Rancho was managed by POST, which maintained use restrictions but was unable to enforce compliance. This resulted in conflicting trail uses within the park in an unmanaged capacity. This plan will help mitigate these conflicts by establishing accepted trail uses (bicycle, pedestrian, and equestrian use).

Project Objectives

The Interim Trail Plan is intended to serve as the approved plan for the property for the next three to five years. Once completed, the Long-Range Trail Master Plan will replace the Interim Trail Plan. The management objectives for the plan are intended to:

- Build public awareness on the appropriate use of the site, and protect habitat from unauthorized and/or destructive use.
- Build public awareness on the unique values and recreational opportunities.
- Reduce conflict and safety concerns raised by shared use of trails.
- Ensure access throughout the site without compromising slope stability or sensitive habitat.
- Establish trail names to be recorded on trail maps, brochures, and websites.
- Establish trail network to be maintained by the NPS trail crew.

In developing this plan, the NPS has gathered public input on trail locations, names, and uses during a public open house and informal neighborhood gatherings, and continues to seek public input on the Rancho Interim Trail Plan through June 14. The proposed trail locations, names, and permitted uses account for a variety of trail experiences while protecting park resources. Your input is requested on the following:

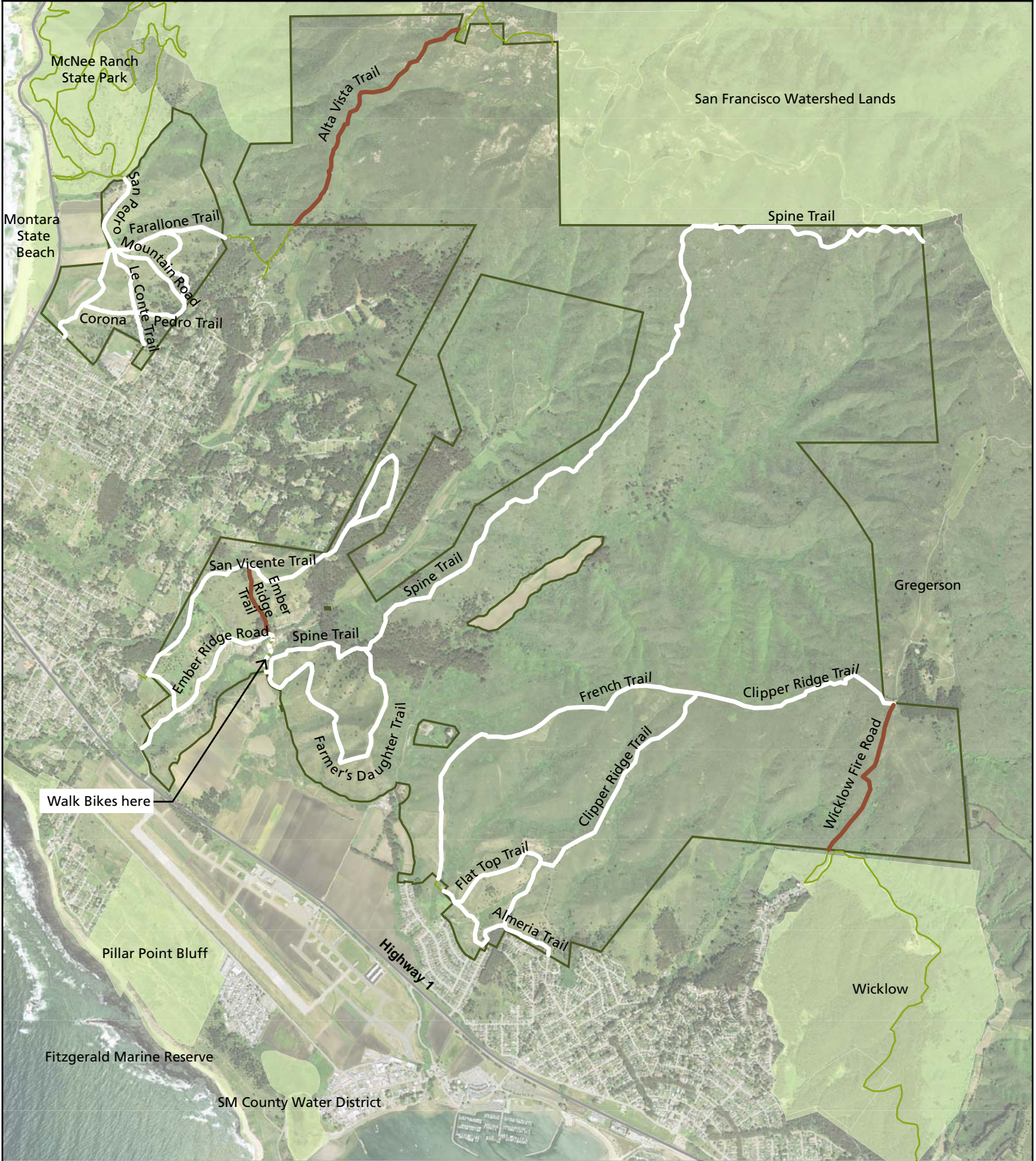
- Trail network to be maintained by the NPS. Do the maps accurately reflect the trails most used by visitors? Are there additional trails not shown on these maps that are frequently used?
- Designated trail names to be recorded on maps, brochures, and websites. Are the proposed trail names consistent with local designations? Are there alternate names that are used, or proposed names that should be considered?
- Proposed permitted use. Please review the attached map, and provide specific feedback on the range of trail uses. Some trails are proposed to be multi-use (bicycle, pedestrian, and equestrian), while others would restrict bicycle use (pedestrian and equestrian only) because of safety, user conflicts, and access.

Rancho Corral de Tierra Interim Trail Plan DRAFT

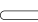


National Park Service
U.S. Department of the Interior


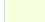


Golden Gate
National Recreation Area



Walk Bikes here

-  Multi-Use Trail, (open to hikers, bicyclists, and horses)
-  Hikers and Horses, (no bicyclists)
-  Non-NPS Trail

-  NPS Boundary
-  Public Land Boundary

