



# Welcome

TO THE OPEN HOUSE FOR THE

## Fort Totten - North Michigan Park Pedestrian Access Improvements Project

### AGENDA

- 6:30 PM OPEN HOUSE
- 7:00 PM PRESENTATION
- 7:30 PM OPEN HOUSE
- 8:00 PM MEETING CONCLUDES



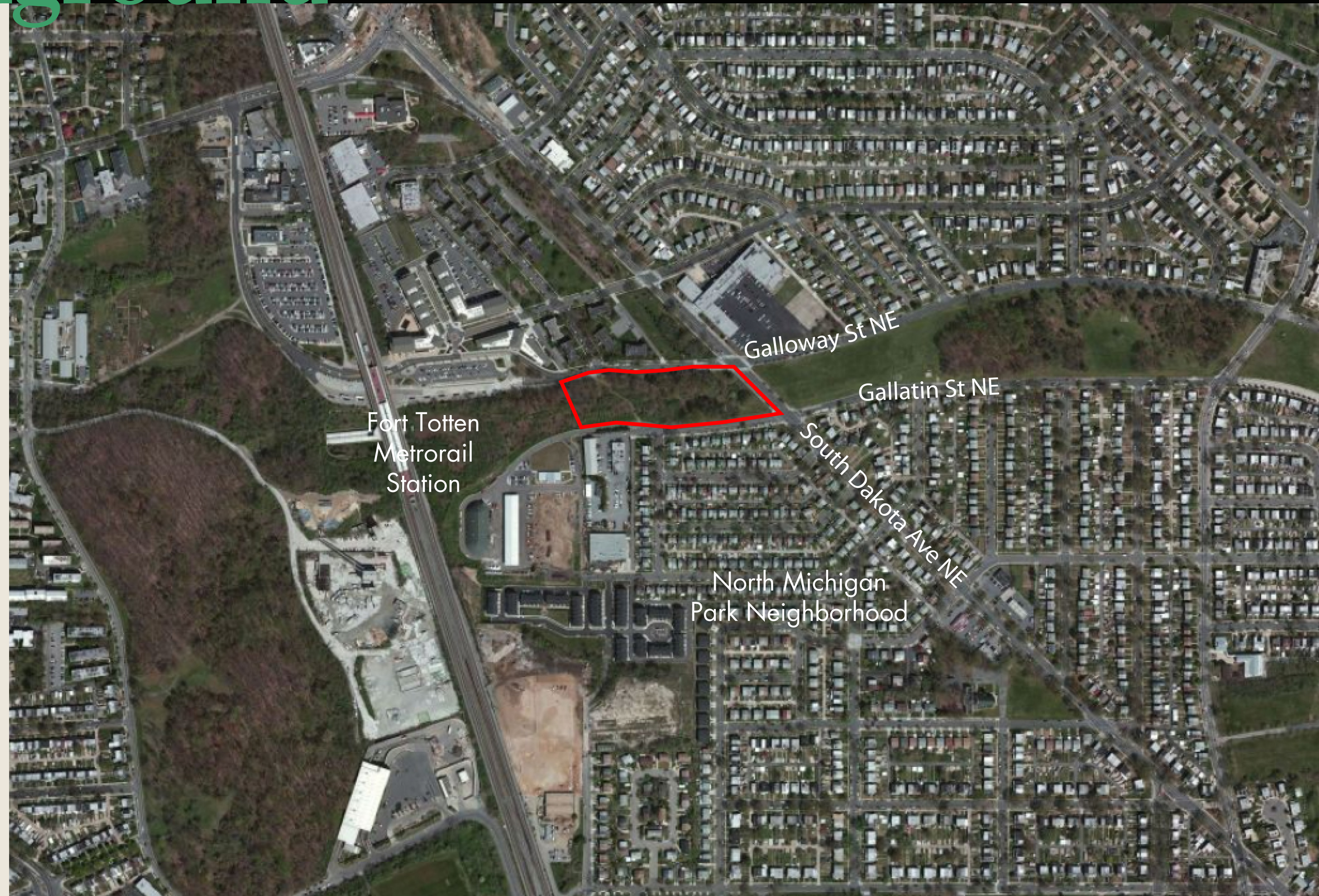
# Project Background



The **National Park Service (NPS) Rock Creek Park** is preparing an Environmental Assessment (EA) in accordance with the National Environmental Policy Act (NEPA) of 1969 for the **Fort Totten - North Michigan Park Pedestrian Access Improvements** located between Galloway and Gallatin Streets, N.E. and South Dakota Avenue, N.E. and the Washington Metropolitan Area Transit Authority (WMATA) in the Michigan Park neighborhood in Washington, D.C.

Currently, the only official public pathways to access the Fort Totten Metrorail Station from the North Michigan Park neighborhood exist around the perimeter of the project area. Instead of walking around the park, pedestrians have created a social trail by cutting through the vegetated project area, resulting in a 10-minute walk to access the Metrorail station. High levels of pedestrian activity on the previously unlit social trail resulted in increased crime. Consequently, temporary lighting was added by NPS and WMATA along the social trail to prevent crime.

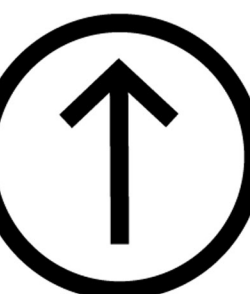
Increased pedestrian activity on the social trail has resulted in damage to resources such as dumping of random objects (e.g. mattresses and trash), vandalism (branches cut to widen the trail, and the placement of various materials, such as bricks and wooden planks, to create a walkable trail in areas that are muddy).



## LEGEND

 Project Area

NORTH





# Purpose & Need



## Purpose

The purpose of the proposed actions is to improve pedestrian access to the Fort Totten Metrorail Station from the Michigan Park neighborhood in Northeast Washington, D.C. and to address public safety concerns.

## Need

Action is needed to provide a direct pedestrian pathway from the North Michigan Park neighborhood to the Fort Totten Metrorail Station. Pedestrian pathways with direct sight lines and lighting could help improve visitor safety. Providing a dedicated pedestrian trail will also reduce resource damage caused by the use of social trails including:

- Cutting of branches and mowing of vegetation to widen social trails
- Placement of various materials such as bricks, wooden planks, and pebbles to create walkable social trails in areas that are muddy
- Dumping of trash and debris off of the social trails



View from Galloway Street looking south at social trail and temporary lighting.



Example of materials placed by public to create walking path.



View from Gallatin Street looking north at social trail.



Example of trash dumped in the area.



View from social trail looking south towards Michigan Park neighborhood.



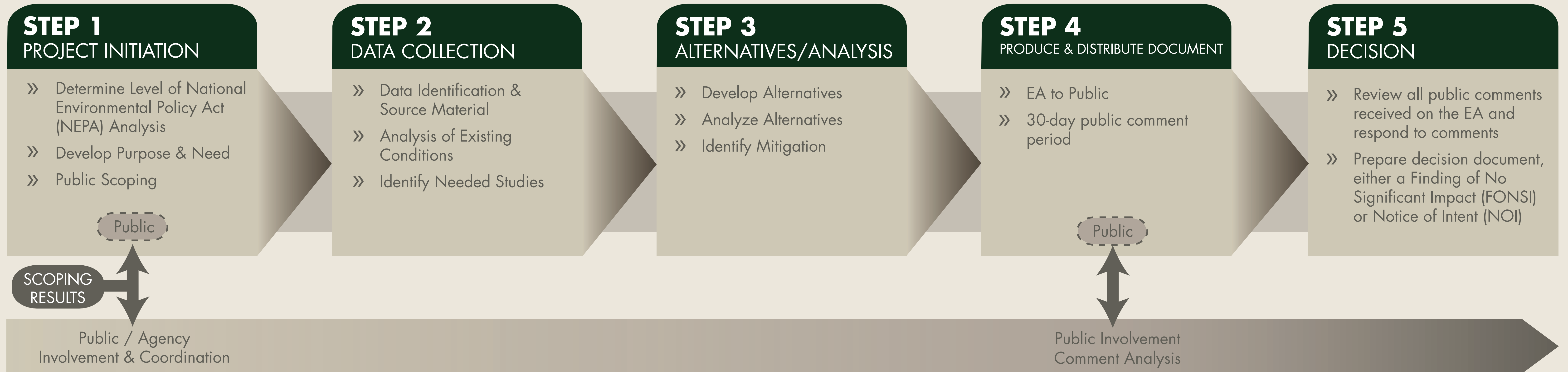
View from social trail looking north towards Galloway Street. Example of soil compaction over tree roots.



# NEPA Process



We Are Here.



**Define Purpose & Need** – for the proposed action, National Park Service defines the project area and the framework within which reasonable alternatives can be developed

**Internal and External Scoping** - hold public scoping meetings to introduce project and identify issues

**Data Collection** - begin resource inventory and analysis, determine resource topics affected by the proposed action, and initiate data collection/research needed to carry impact analysis forward

**Prepare Environmental Assessment (EA)** – describe affected environment, develop alternatives, and prepare impact analysis of alternatives

**Release Environmental Assessment (EA)** for 30-day public review and comment

**National Park Service to review and address public comments** received on the environmental assessment and respond to comments

**Prepare and Finalize Decision Document** - if appropriate and draft Section 106 agreement document.



# Section 106 Process



*Section 106 of the National Historic Preservation Act of 1966 (NHPA)* requires federal agencies to take into account the effects of their undertakings on historic properties. If it is determined the proposed action could affect historic properties, Section 106 is triggered. The Section 106 task and the NEPA assessment need to be closely coordinated.

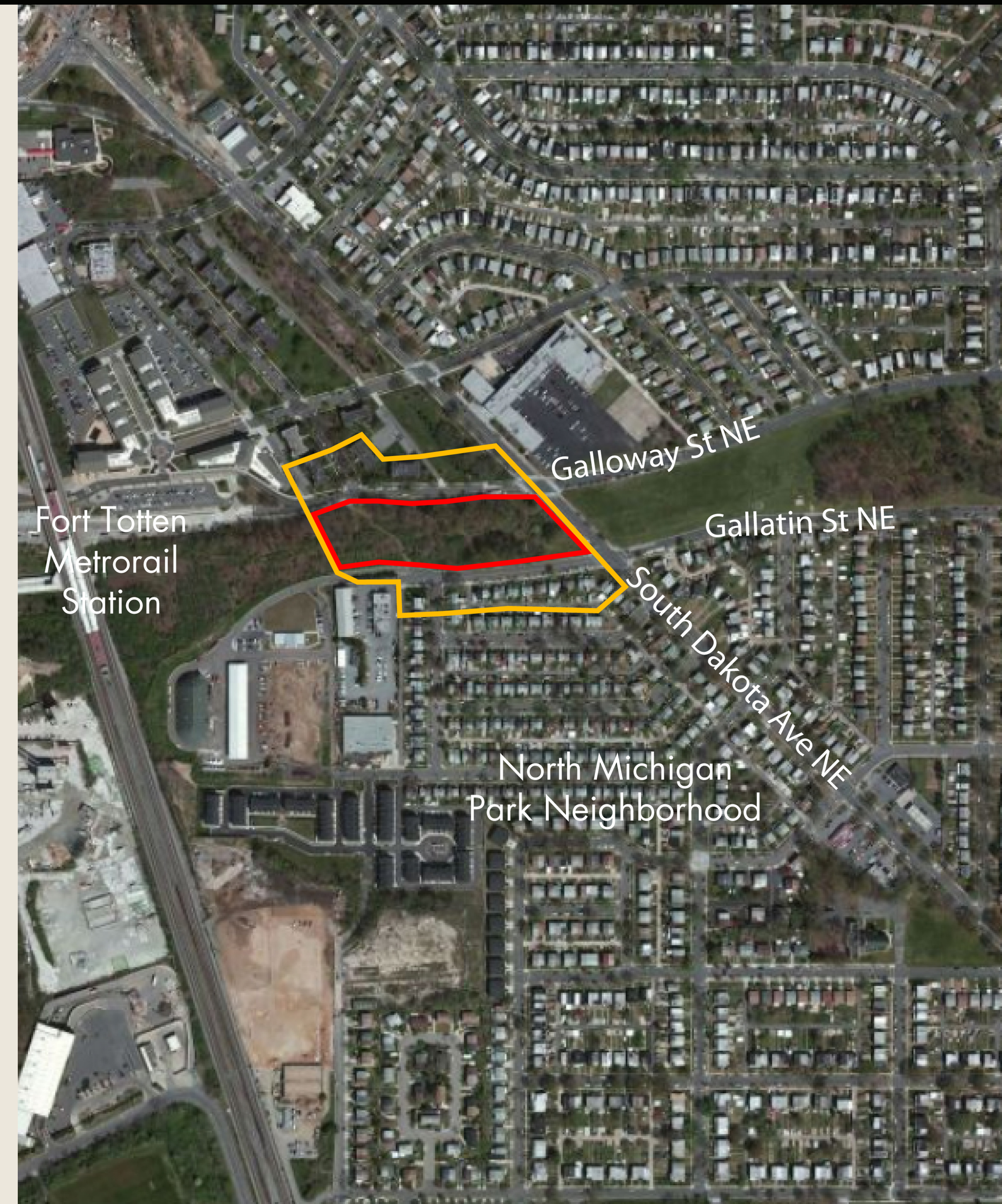
## Section 106 Process

- Define undertaking / initiate Section 106
- Identify consulting parties
- Plan to involve the public
- Define Area of Potential Effect (APE)
- Identify significant cultural resources in APE
- Assess effects on significant resources
- Apply criteria of adverse effect
- Continue consultation
- Draft agreement document, if needed

## Area of Potential Effect

According to *36 CFR 800.16(d)*, the **Area of Potential Effect (APE)** is the geographic area or areas within which an undertaking may directly or indirectly cause changes in the character or use of historic properties, if such properties exist. The Area of Potential Effect is influenced by the scale and nature of the undertaking and may be different for different kinds of effects caused by the undertaking.

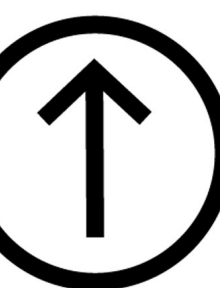
The draft area of potential effect (APE) consists of the portion of portion of Fort Circle Parks/Civil War Defenses of Washington park land roughly bounded to the east by South Dakota Avenue, NE; to the south by parcels facing Gallatin St., NE; Washington Metropolitan Area Transit Authority (WMATA) property to the west; and buildings facing Galloway St., NE to the north. While part of the larger Rock Creek Park system, this section is separated from the park to the east by South Dakota Avenue. Park land to the west, which includes historic Fort Totten, is physically and visually separated by the WMATA right of way.



### LEGEND

-  Project Area
-  Draft Area of Potential Effect (APE)

NORTH





# Proposed Alternative Options

U.S. Department of the Interior  
National Park Service



## NO ACTION

Current management remains in effect, which includes mowing the social trails from South Dakota Avenue to Galloway Street, NE. There would be no maintenance of the unofficial trail between Galloway Street and the intersection of Gallatin Street and 6th Place, NE. The lighting towers currently in place from NPS and WMATA are temporary and would not remain.

## IMPROVE STREET-SIDE PEDESTRIAN FACILITIES ACCESS

Fence around the entire project area to protect park resources. The fence would follow the project area along Galloway Street, South Dakota Avenue, and Gallatin Street. The option could also include installing a sidewalk along the north side of Gallatin Street. (As part of a separate project, the District Department of Transportation is examining installing a sidewalk on the south side of Galloway Street.) There is an existing sidewalk along the south side of Gallatin Street, along the DDOT right of way. This option could also include the installation of lighting along the perimeter of the project area.

## DIRECT TRAIL






Construct a direct trail through the project area that allows for the greatest unobstructed line-of-sight as possible from the beginning to the end of the trail. The trail does not have to follow a current trail alignment. The option may include formalizing one of the short existing social trails, and could include trail lighting. The trail should take into account existing topography to allow for sufficient sight lines and proper grade for universal accessibility.

## CONSTRUCT A TRAIL SYSTEM

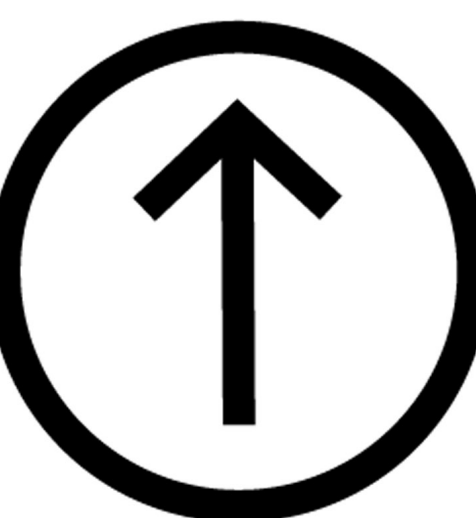
Construct a trail system with amenities in the eastern section of the project area. This option would examine existing and potential trail alignments that are compatible with the topography and existing stormwater management structures, do not interfere with Metrorail access facilities on the west side of the project area, and allow for an unobstructed line-of-sight. This option could include various amenities such as benches, lighting, and picnic tables. The area could also be cleared of invasive, non-native vegetation, resulting in an appearance similar to the grassed and forested areas of the Civil War Defenses of Washington land east of South Dakota Avenue.



## LEGEND

-  Project Area
-  No Action/Existing Social Trails
-  Improve Street-Side Pedestrian Facilities Access, Fence Off Area
-  Direct Trail
-  Construct a Trail System

NORTH





# Opportunities to Comment

U.S. Department of the Interior  
National Park Service



## How to Provide Comments Tonight:

Complete the comment form and leave it with us before you go or return it to us by mail. (Comment form is pre-addressed.)

Write your comments on the flip charts at the comment stations.

Before including your address, phone number, e-mail address, or other personal identifying information in your comment, you should be aware that your entire comment – including your personal identifying information – may be made publicly available at any time. While you can ask us in your comment to withhold your personal identifying information from public review, we cannot guarantee that we will be able to do so.

## How to Provide Comments Throughout the Public Scoping Period:

Write your comments at the project website, at:

<http://parkplanning.nps.gov/rocr>

Mail or hand-deliver comments to:

ATTN: Fort Totten - North Michigan Park Pedestrian Access Improvements Project  
Rock Creek Park  
3545 Williamsburg Lane, NW  
Washington, D.C., 20008-1207

Please note: comments will not be accepted by fax, e-mail, or in any other way than those specified above.

*Please submit all comments prior to  
May 2, 2014.*