

## Alternative B: Collections Unlimited and No Permits inside the National Park

Kobuk Valley National Park

Alaska Region  
National Park Service  
U.S. Department of the Interior

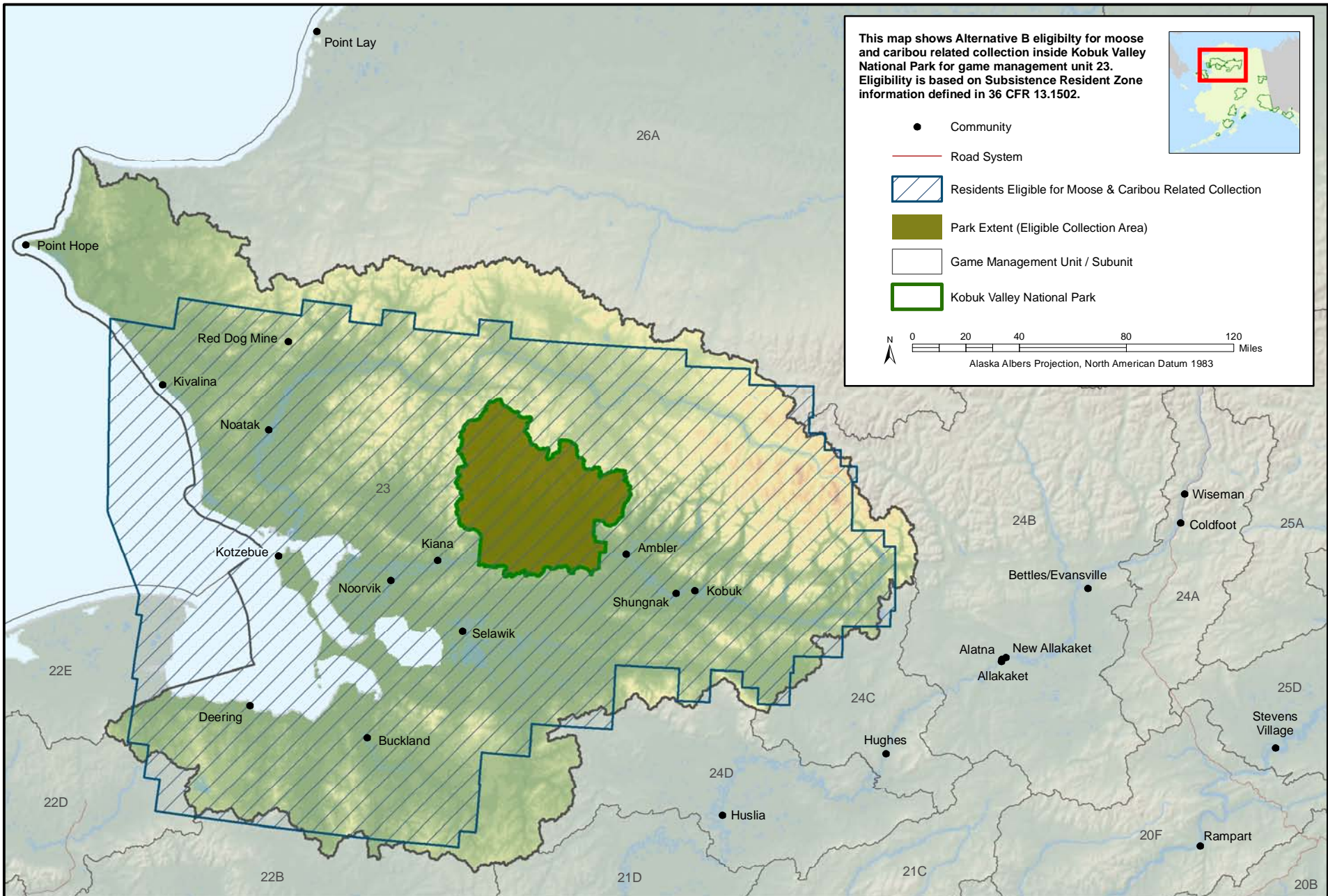


This map shows Alternative B eligibility for moose and caribou related collection inside Kobuk Valley National Park for game management unit 23. Eligibility is based on Subsistence Resident Zone information defined in 36 CFR 13.1502.



- Community
- Road System
- Residents Eligible for Moose & Caribou Related Collection
- Park Extent (Eligible Collection Area)
- Game Management Unit / Subunit
- Kobuk Valley National Park

0 20 40 80 120 Miles  
Alaska Albers Projection, North American Datum 1983





# Alternative C: Collections Limited by Areas with Discretionary Permits inside the National Park

Kobuk Valley National Park

Alaska Region  
National Park Service  
U.S. Department of the Interior

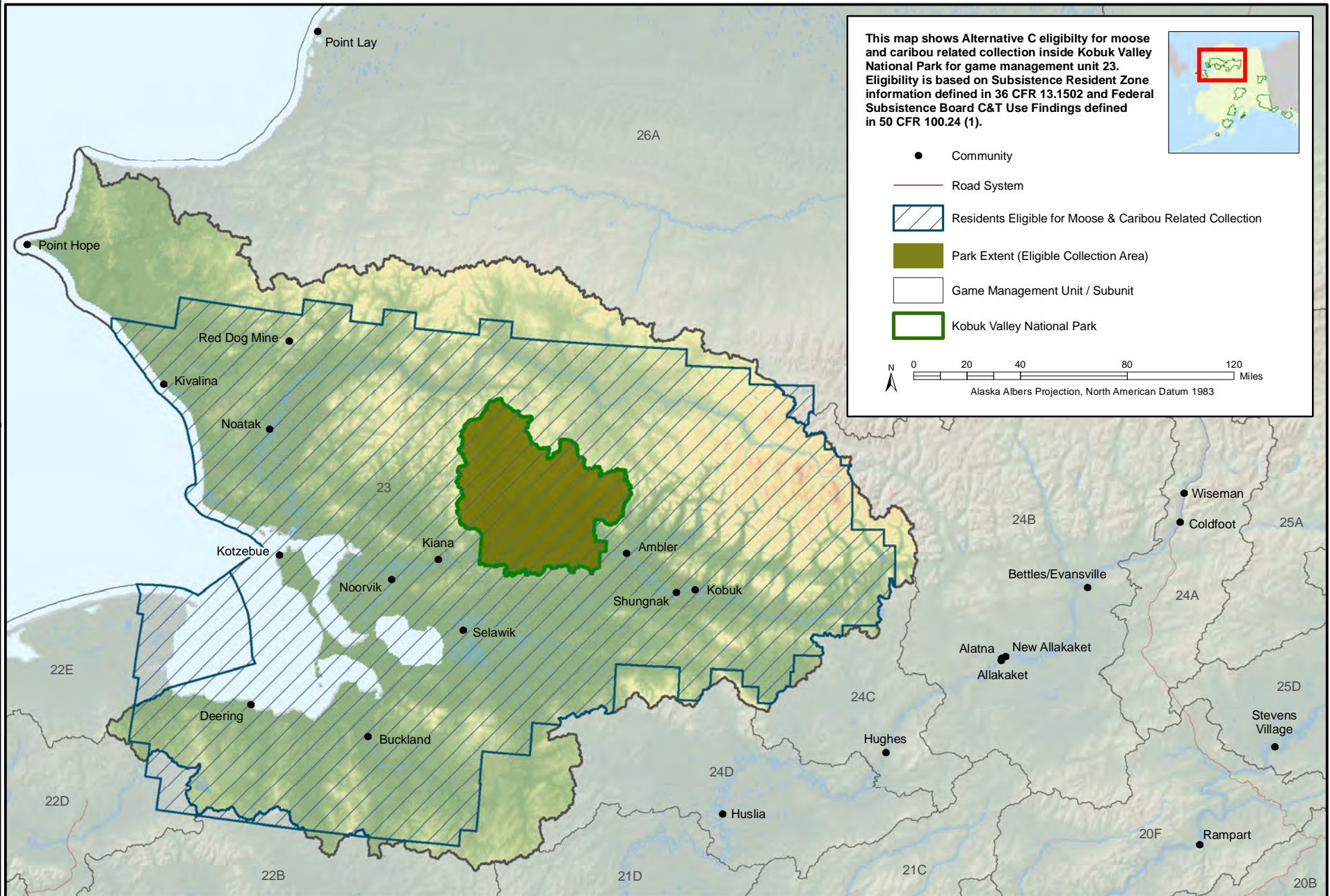


This map shows Alternative C eligibility for moose and caribou related collection inside Kobuk Valley National Park for game management unit 23. Eligibility is based on Subsistence Resident Zone information defined in 36 CFR 13.1502 and Federal Subsistence Board C&T Use Findings defined in 50 CFR 100.24 (1).



- Community
- Road System
- Residents Eligible for Moose & Caribou Related Collection
- Park Extent (Eligible Collection Area)
- Game Management Unit / Subunit
- Kobuk Valley National Park

0 20 40 80 120 Miles  
Alaska Albers Projection, North American Datum 1983





# Alternative D: Collections Limited by Areas and Species with Required Permits inside the National Park

Kobuk Valley National Park

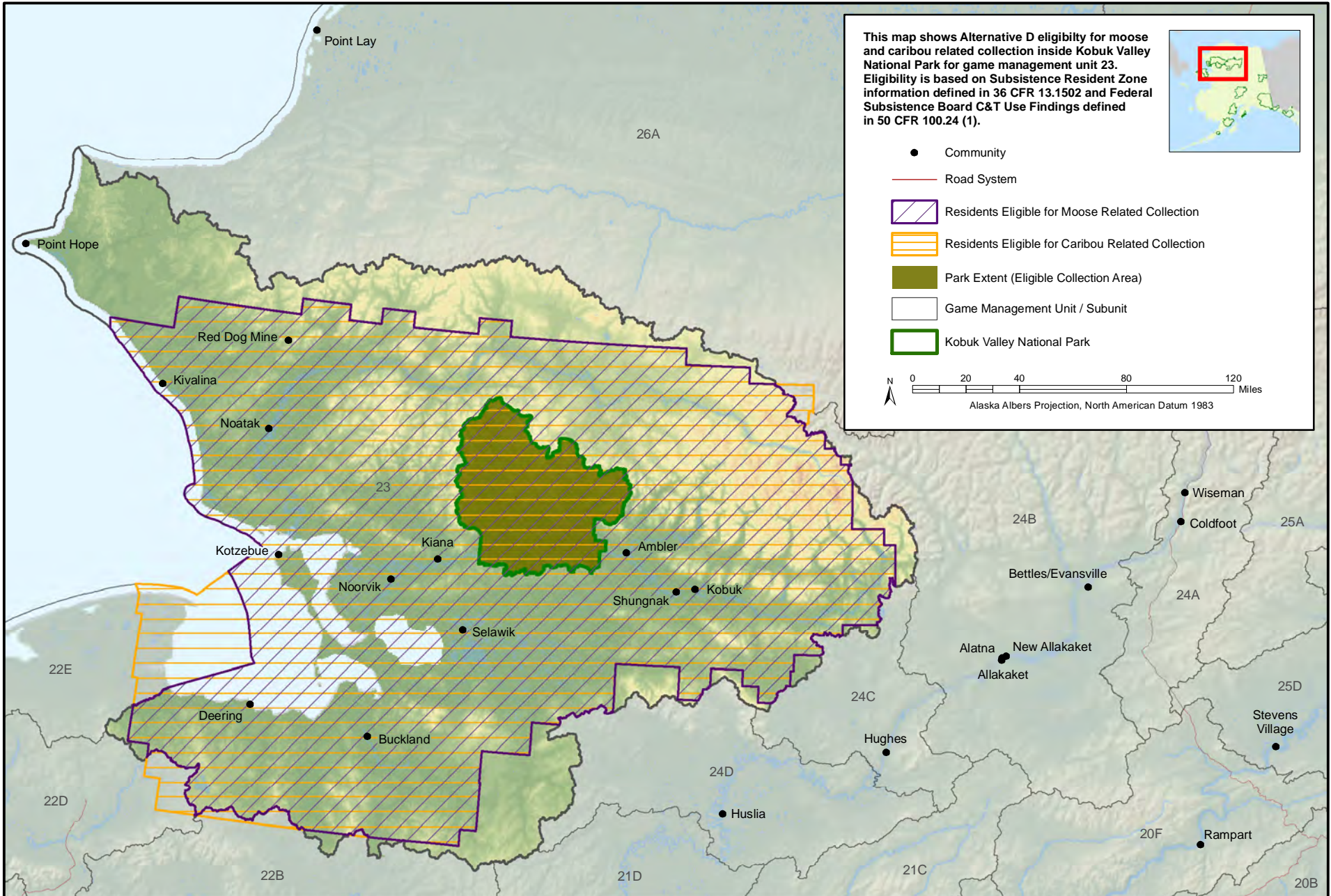
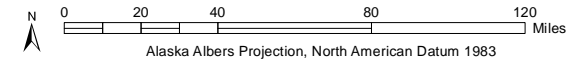
Alaska Region  
National Park Service  
U.S. Department of the Interior



This map shows Alternative D eligibility for moose and caribou related collection inside Kobuk Valley National Park for game management unit 23. Eligibility is based on Subsistence Resident Zone information defined in 36 CFR 13.1502 and Federal Subsistence Board C&T Use Findings defined in 50 CFR 100.24 (1).



- Community
- Road System
- Residents Eligible for Moose Related Collection
- Residents Eligible for Caribou Related Collection
- Park Extent (Eligible Collection Area)
- Game Management Unit / Subunit
- Kobuk Valley National Park





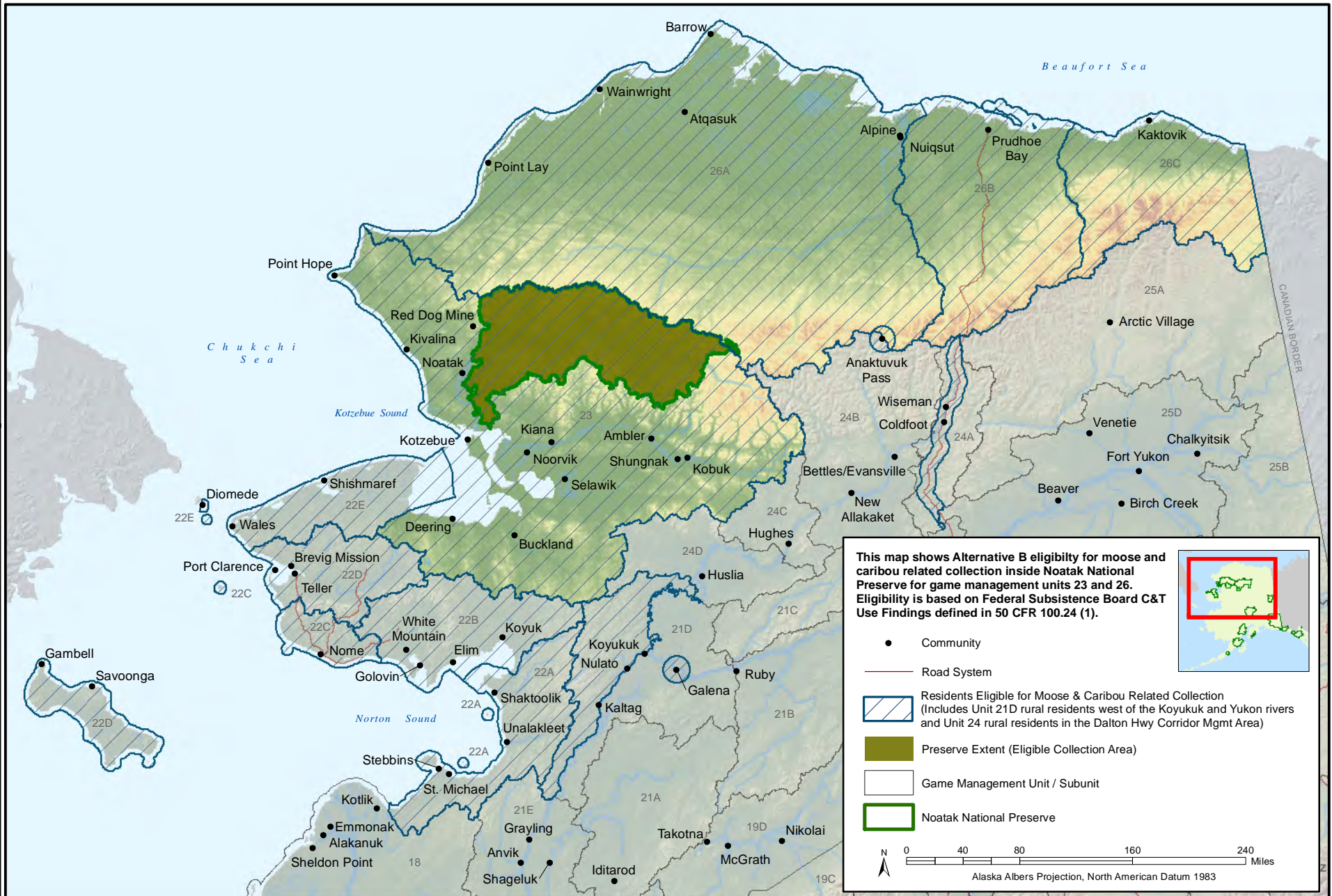
# Alternative B: Collections Unlimited and No Permits inside the National Preserve

## Noatak National Preserve

Alaska Region  
National Park Service  
U.S. Department of the Interior



2-12

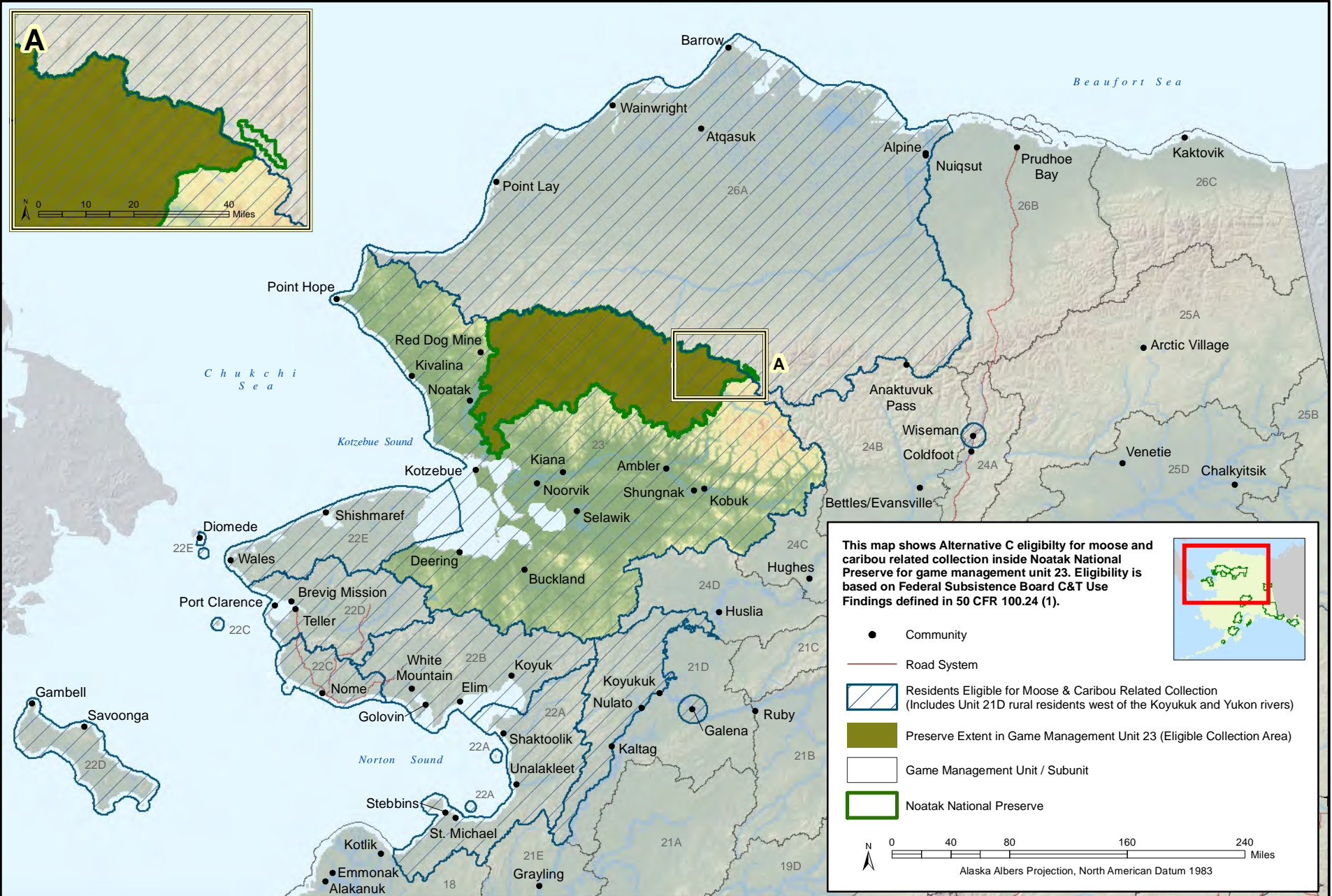




# Alternative C: Collections Limited by Areas with Discretionary Permits inside the National Preserve

Noatak National Preserve

Alaska Region  
National Park Service  
U.S. Department of the Interior





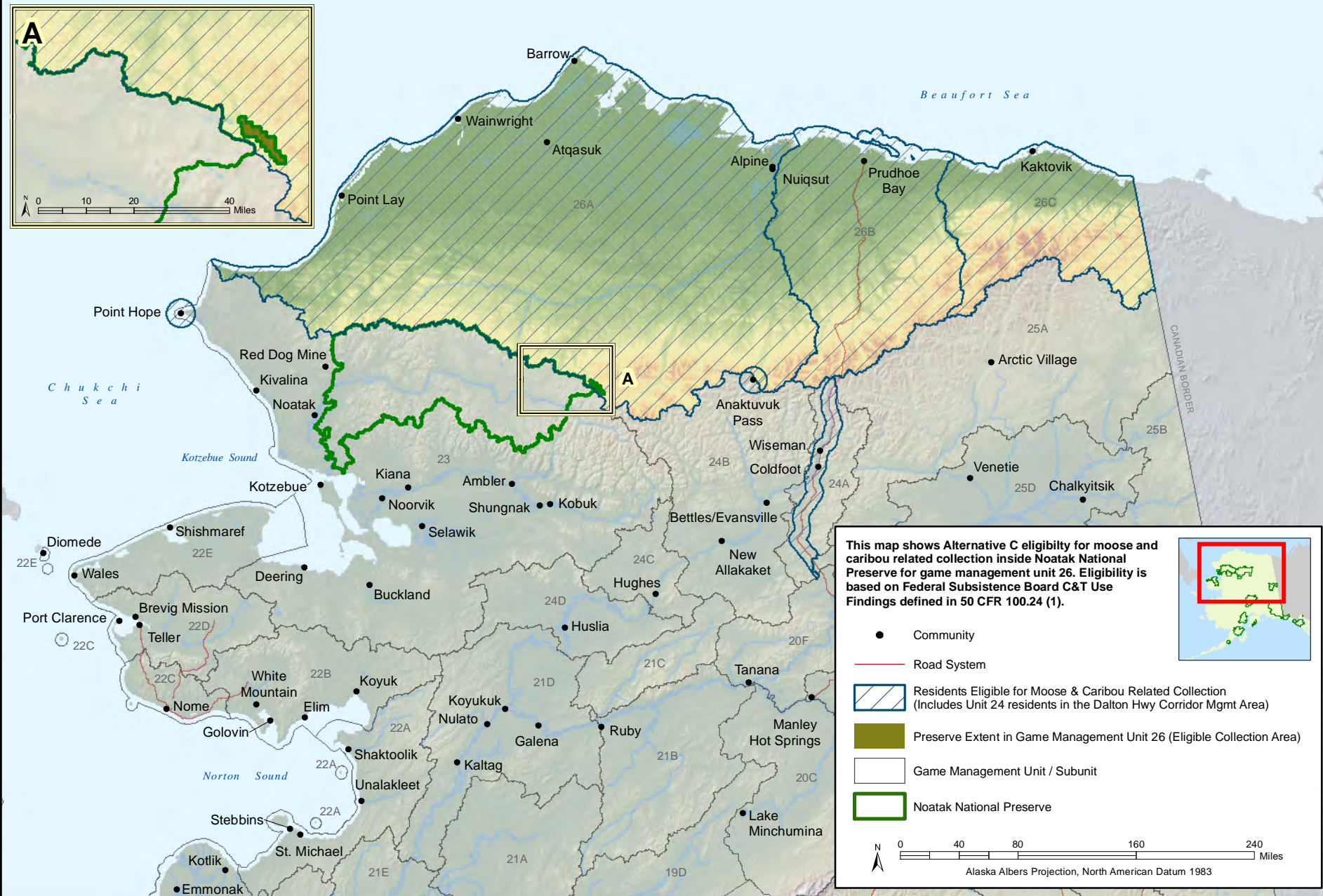
# Alternative C: Collections Limited by Areas with Discretionary Permits inside the National Preserve

## Noatak National Preserve

Alaska Region  
National Park Service  
U.S. Department of the Interior



2-14





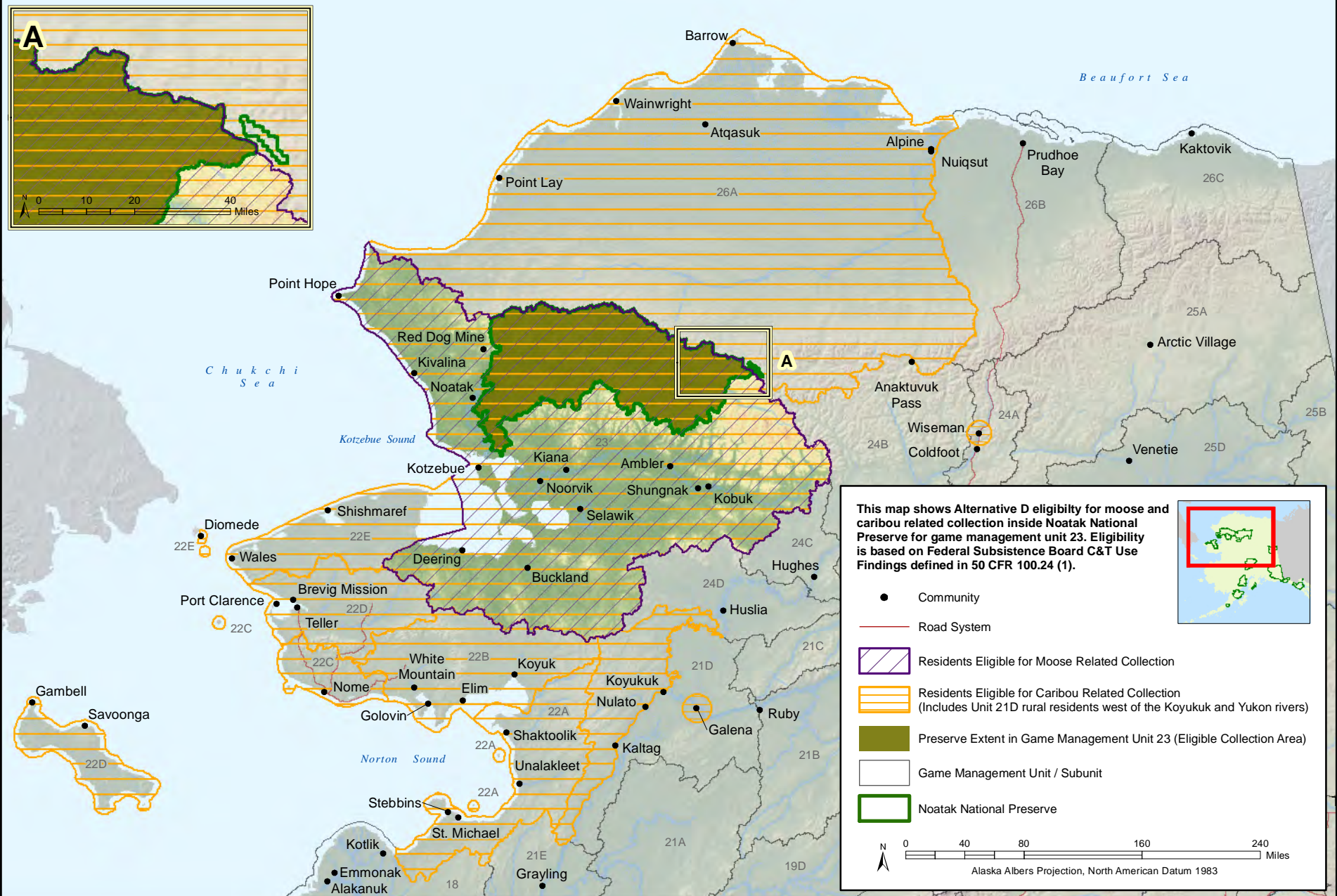
# Alternative D: Collections Limited by Areas and Species with Required Permits inside the National Preserve

## Noatak National Preserve

Alaska Region  
National Park Service  
U.S. Department of the Interior



2-15





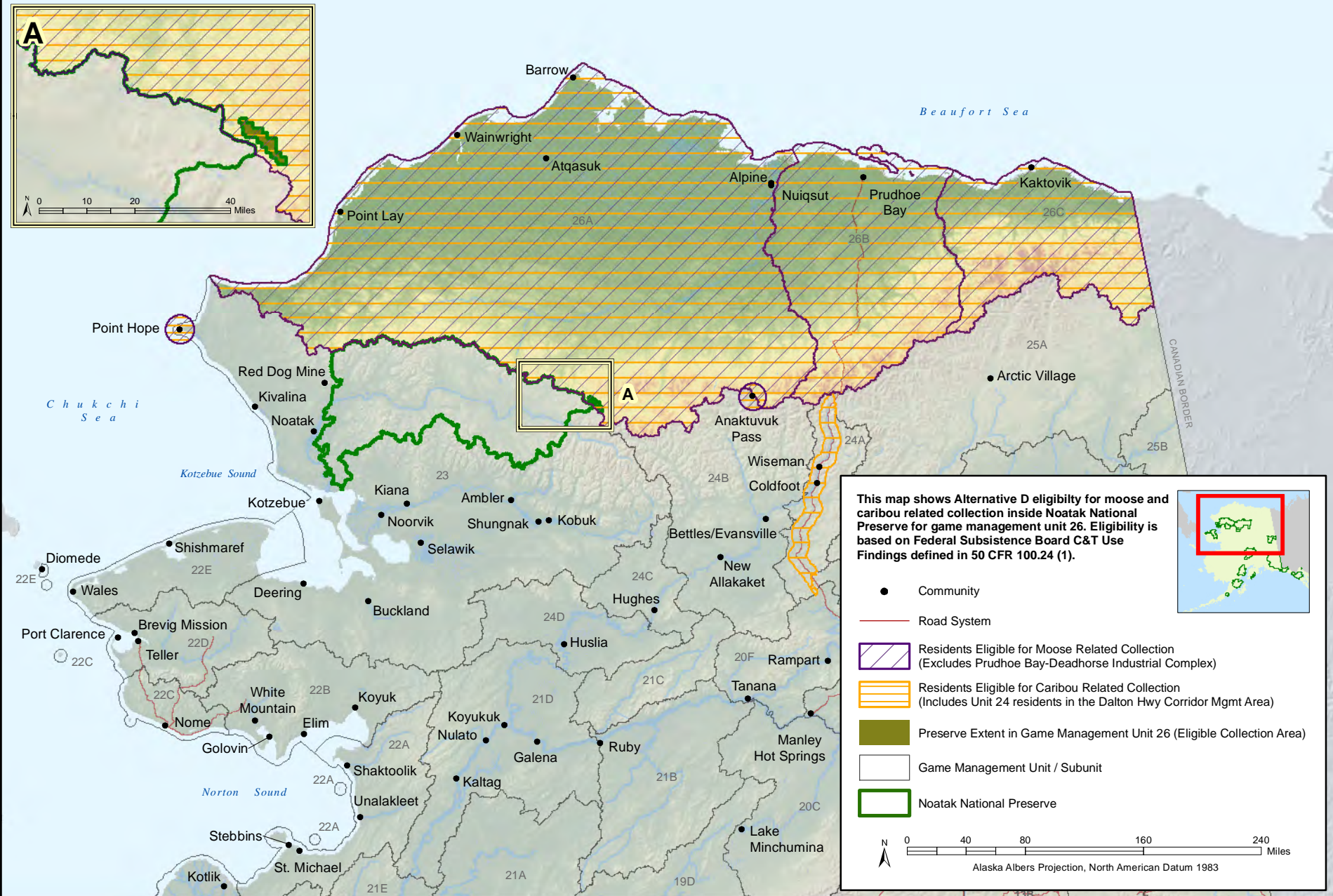
# Alternative D: Collections Limited by Areas and Species with Required Permits inside the National Preserve

## Noatak National Preserve

Alaska Region  
National Park Service  
U.S. Department of the Interior



2-16





## Alternative B: Collections Unlimited and No Permits inside the National Park

### Wrangell - St. Elias National Park and Preserve

Alaska Region  
National Park Service  
U.S. Department of the Interior



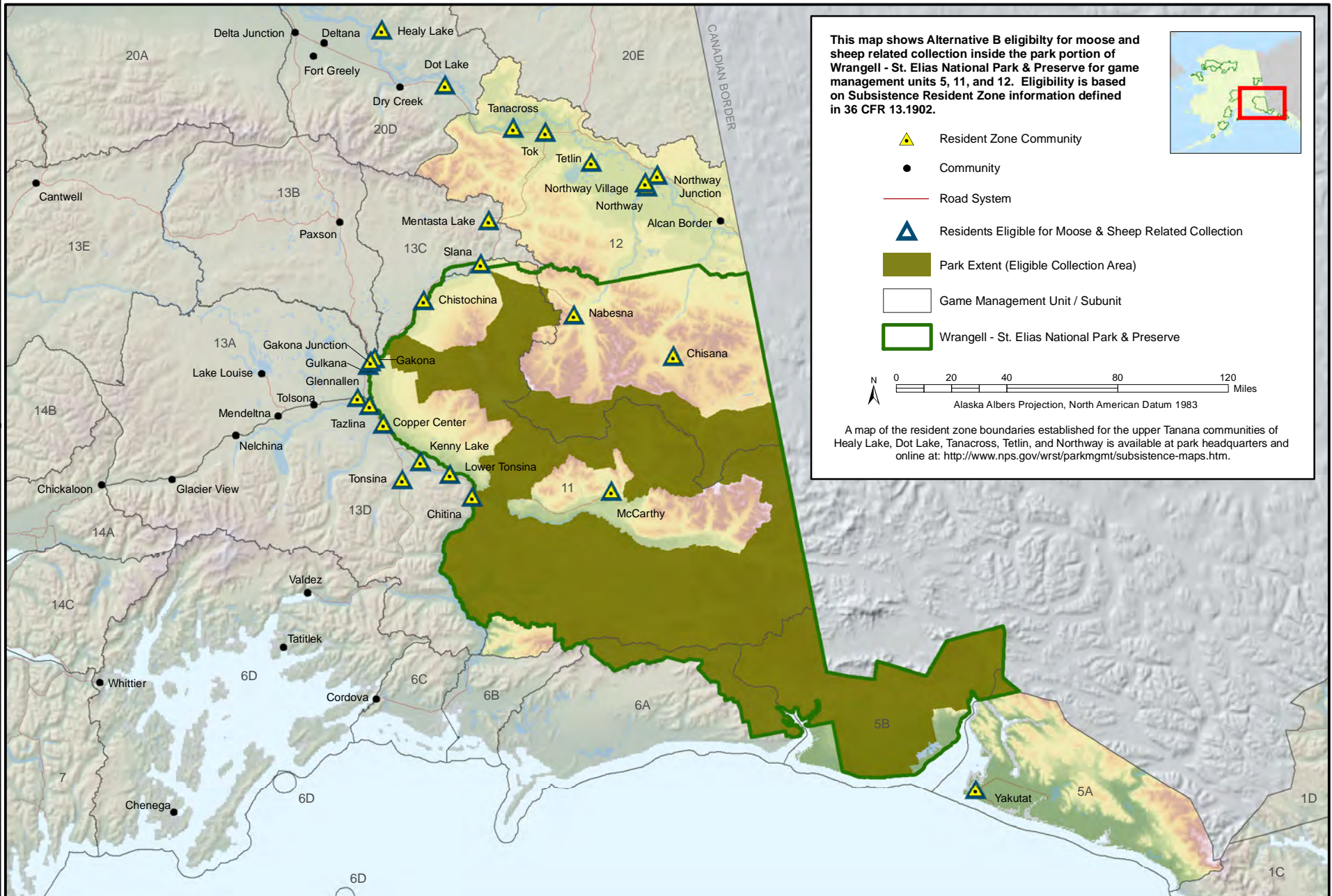
This map shows Alternative B eligibility for moose and sheep related collection inside the park portion of Wrangell - St. Elias National Park & Preserve for game management units 5, 11, and 12. Eligibility is based on Subsistence Resident Zone information defined in 36 CFR 13.1902.



- Resident Zone Community
- Community
- Road System
- Residents Eligible for Moose & Sheep Related Collection
- Park Extent (Eligible Collection Area)
- Game Management Unit / Subunit
- Wrangell - St. Elias National Park & Preserve

0 20 40 80 120 Miles  
Alaska Albers Projection, North American Datum 1983

A map of the resident zone boundaries established for the upper Tanana communities of Healy Lake, Dot Lake, Tanacross, Tetlin, and Northway is available at park headquarters and online at: <http://www.nps.gov/wrst/parkmgmt/subsistence-maps.htm>.

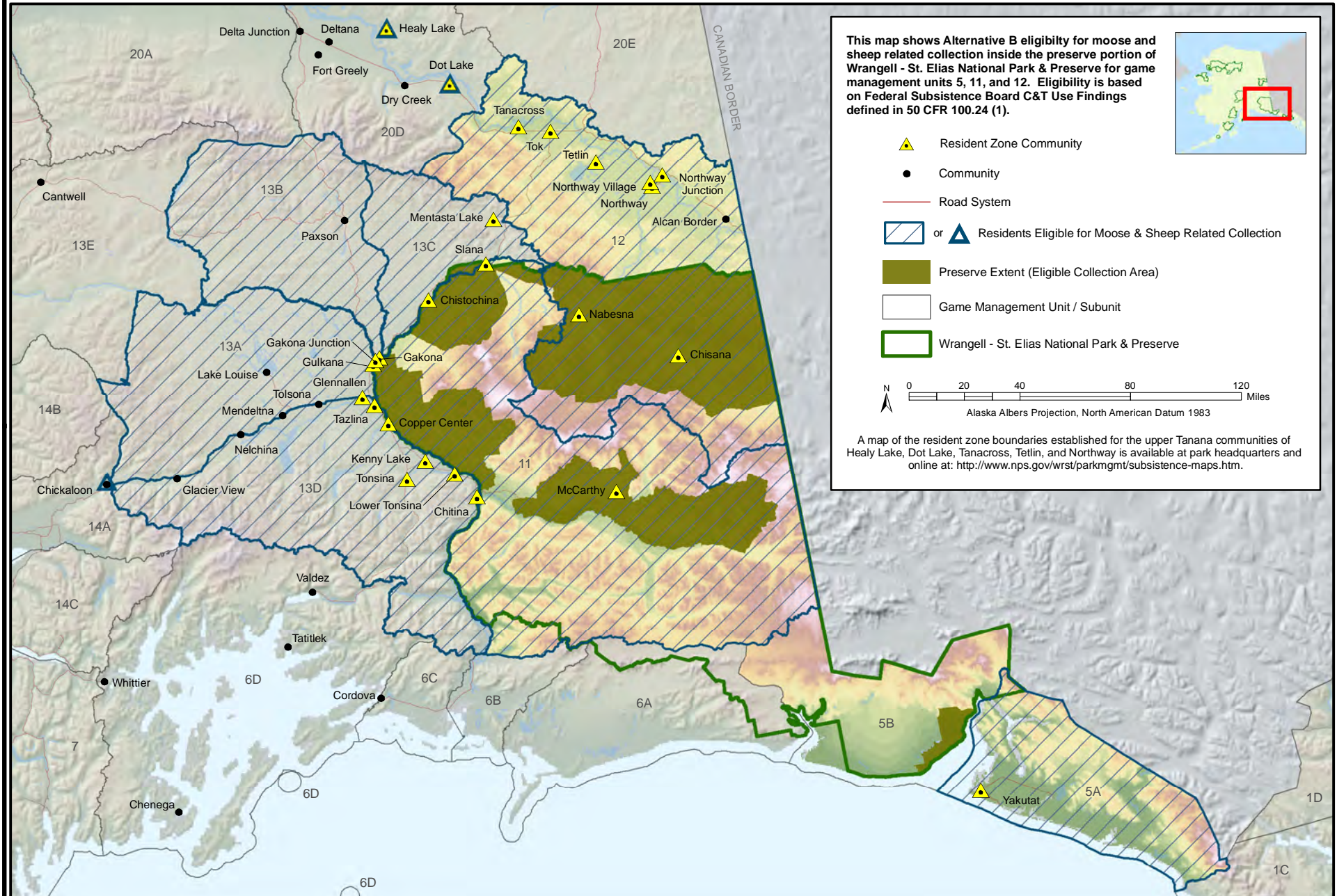




## Alternative B: Collections Unlimited and No Permits inside the National Preserve

Wrangell - St. Elias National Park and Preserve

Alaska Region  
National Park Service  
U.S. Department of the Interior

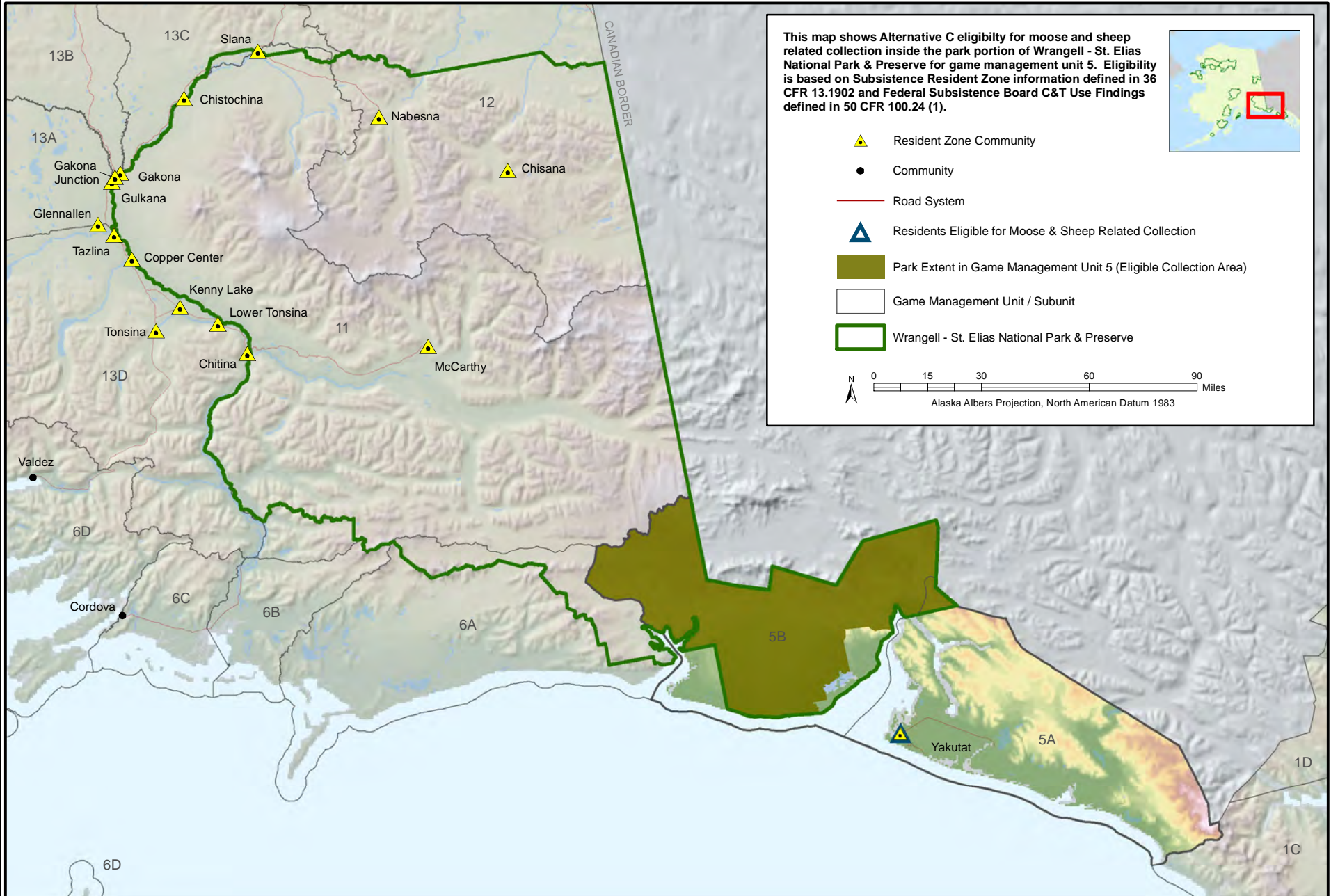




# Alternative C: Collections Limited by Areas with Discretionary Permits inside the National Park

Wrangell - St. Elias National Park and Preserve

Alaska Region  
National Park Service  
U.S. Department of the Interior

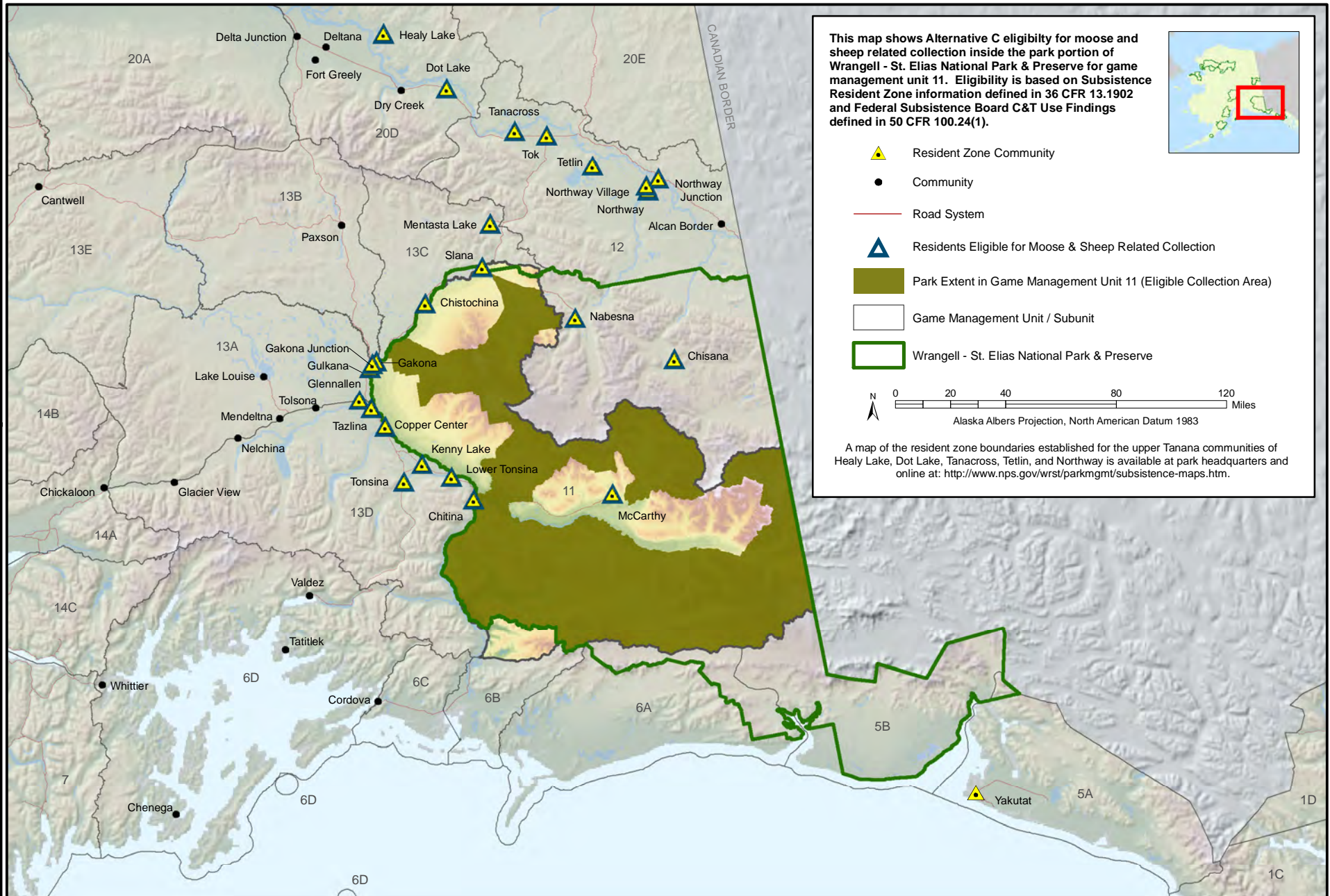




## Alternative C: Collections Limited by Areas with Discretionary Permits inside the National Park

Wrangell - St. Elias National Park and Preserve

Alaska Region  
National Park Service  
U.S. Department of the Interior

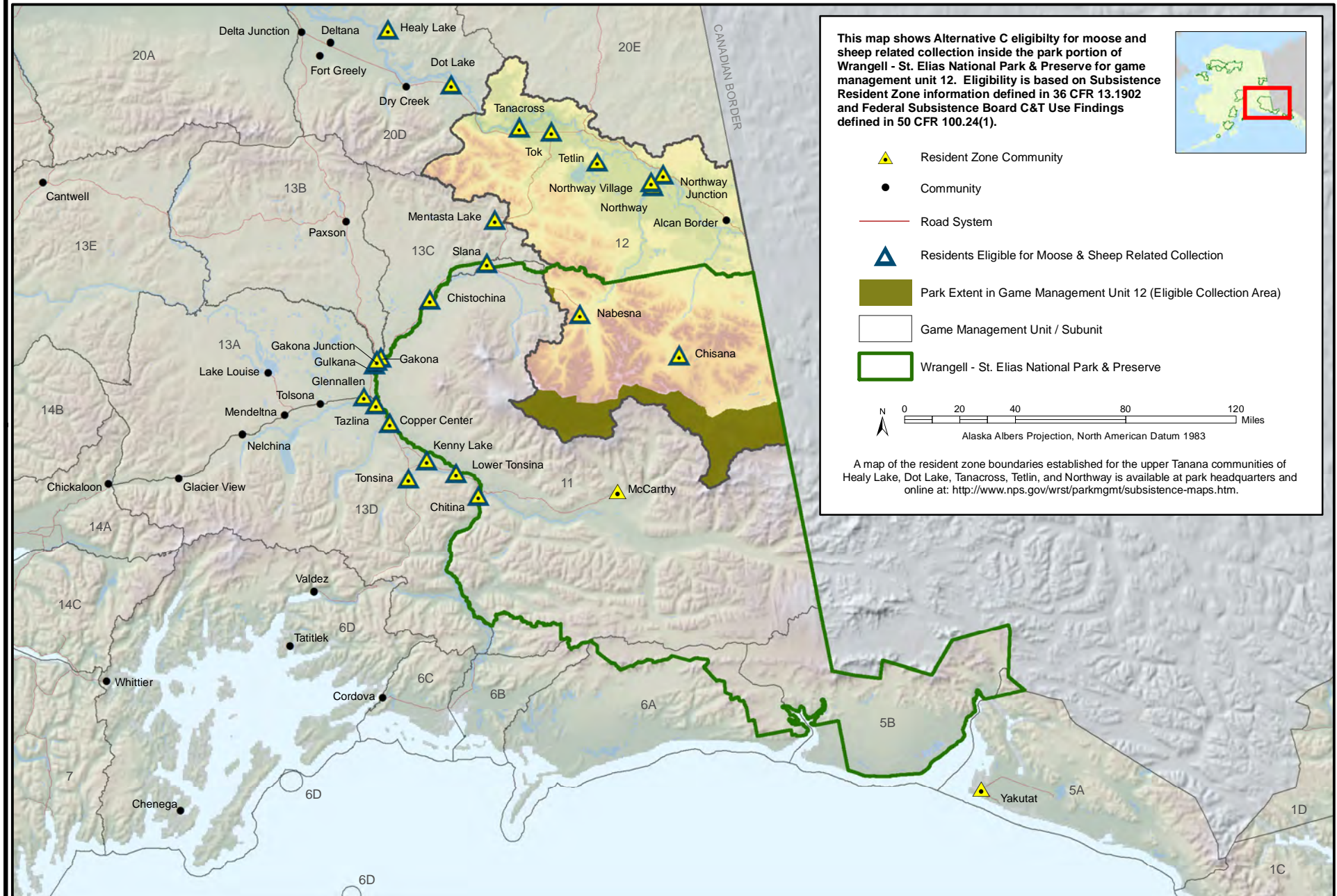




## Alternative C: Collections Limited by Areas with Discretionary Permits inside the National Park

Wrangell - St. Elias National Park and Preserve

Alaska Region  
National Park Service  
U.S. Department of the Interior





# Alternative C: Collections Limited by Areas and Species with Required Permits inside the National Preserve

Wrangell - St. Elias National Park and Preserve

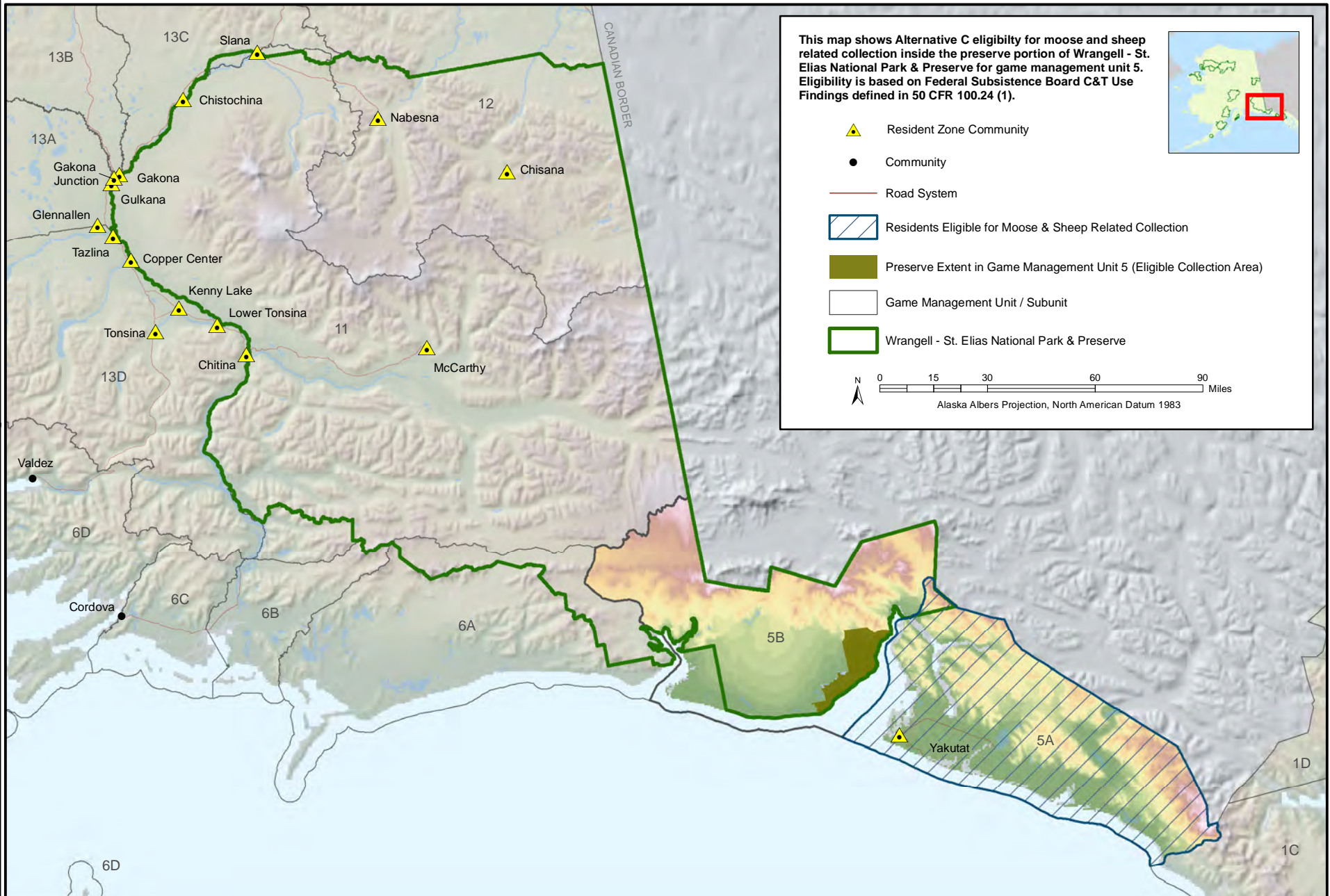
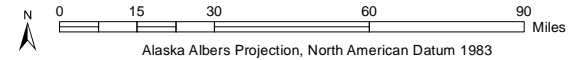
Alaska Region  
National Park Service  
U.S. Department of the Interior



This map shows Alternative C eligibility for moose and sheep related collection inside the preserve portion of Wrangell - St. Elias National Park & Preserve for game management unit 5. Eligibility is based on Federal Subsistence Board C&T Use Findings defined in 50 CFR 100.24 (1).



- Resident Zone Community
- Community
- Road System
- Residents Eligible for Moose & Sheep Related Collection
- Preserve Extent in Game Management Unit 5 (Eligible Collection Area)
- Game Management Unit / Subunit
- Wrangell - St. Elias National Park & Preserve





# Alternative C: Collections Limited by Areas with Discretionary Permits inside the National Preserve

Wrangell - St. Elias National Park and Preserve

Alaska Region  
National Park Service  
U.S. Department of the Interior



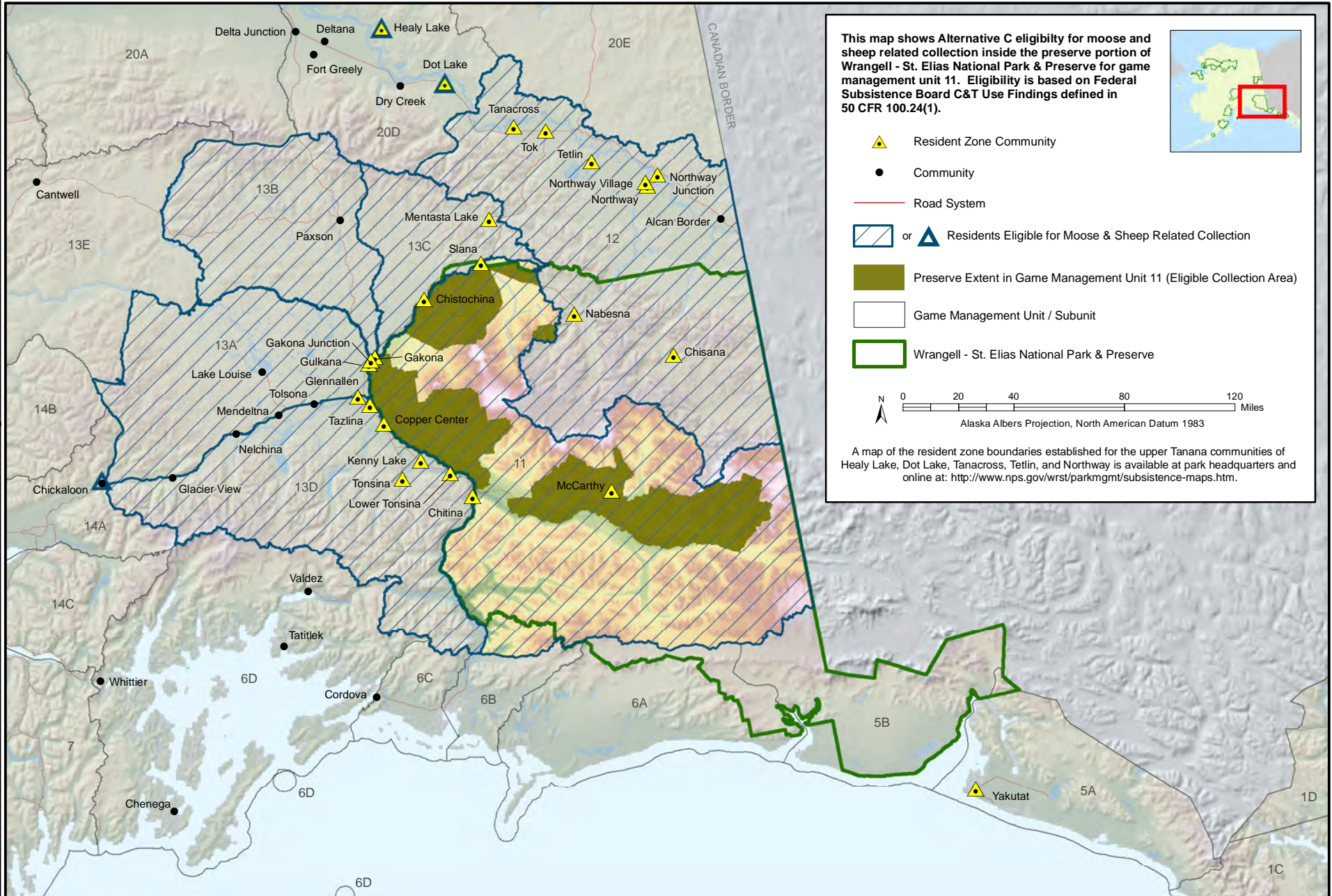
This map shows Alternative C eligibility for moose and sheep related collection inside the preserve portion of Wrangell - St. Elias National Park & Preserve for game management unit 11. Eligibility is based on Federal Subsistence Board C&T Use Findings defined in 50 CFR 100.24(1).



- Resident Zone Community
- Community
- Road System
- or Residents Eligible for Moose & Sheep Related Collection
- Preserve Extent in Game Management Unit 11 (Eligible Collection Area)
- Game Management Unit / Subunit
- Wrangell - St. Elias National Park & Preserve

0 20 40 80 120 Miles  
Alaska Albers Projection, North American Datum 1983

A map of the resident zone boundaries established for the upper Tanana communities of Healy Lake, Dot Lake, Tanacross, Tetlin, and Northway is available at park headquarters and online at: <http://www.nps.gov/wrst/parkmgmt/subsistence-maps.htm>.





# Alternative C: Collections Limited by Areas with Discretionary Permits inside the National Preserve

Wrangell - St. Elias National Park and Preserve

Alaska Region  
National Park Service  
U.S. Department of the Interior



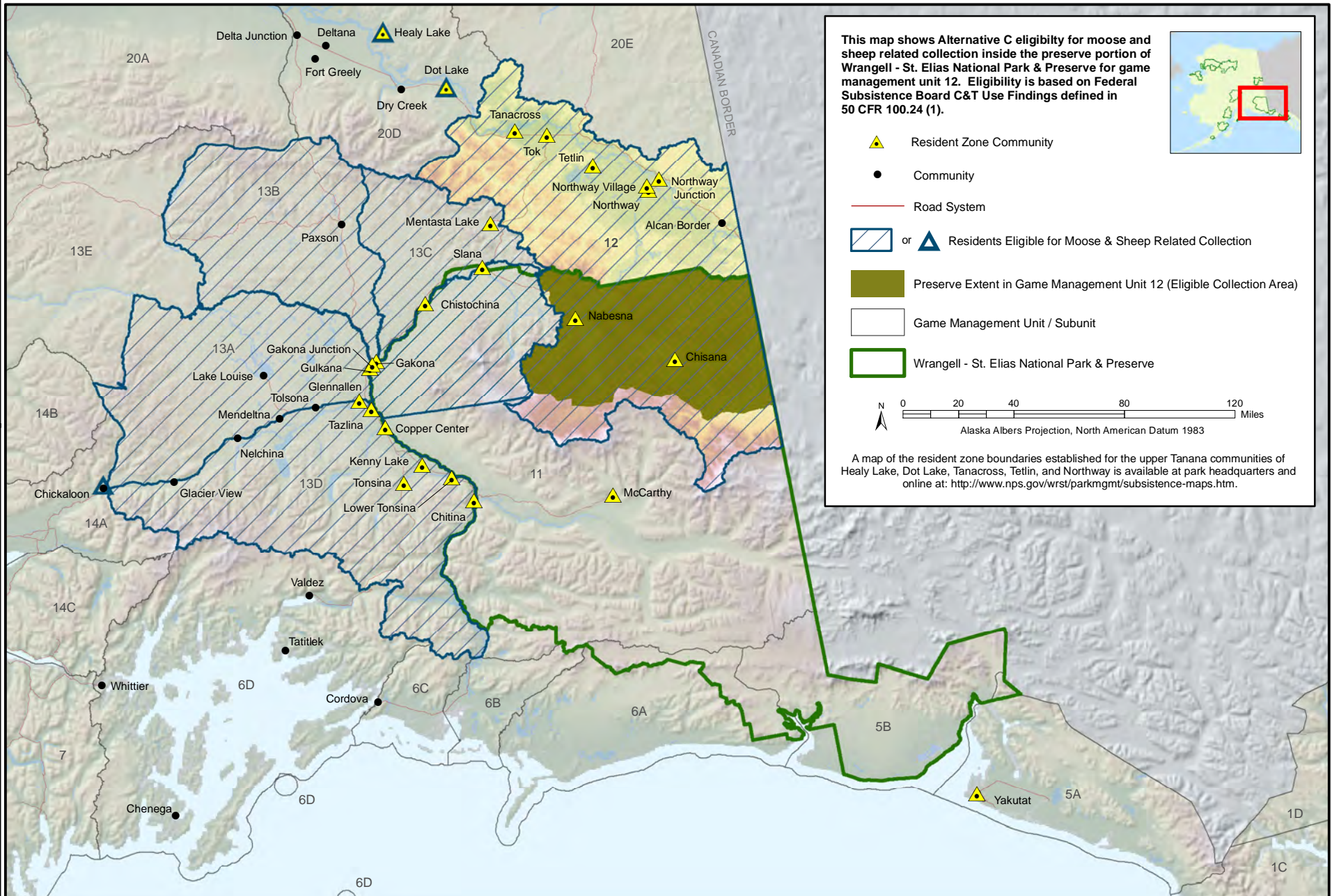
This map shows Alternative C eligibility for moose and sheep related collection inside the preserve portion of Wrangell - St. Elias National Park & Preserve for game management unit 12. Eligibility is based on Federal Subsistence Board C&T Use Findings defined in 50 CFR 100.24 (1).



- Resident Zone Community
- Community
- Road System
- or Residents Eligible for Moose & Sheep Related Collection
- Preserve Extent in Game Management Unit 12 (Eligible Collection Area)
- Game Management Unit / Subunit
- Wrangell - St. Elias National Park & Preserve

0 20 40 80 120 Miles  
Alaska Albers Projection, North American Datum 1983

A map of the resident zone boundaries established for the upper Tanana communities of Healy Lake, Dot Lake, Tanacross, Tetlin, and Northway is available at park headquarters and online at: <http://www.nps.gov/wrst/parkmgmt/subsistence-maps.htm>.

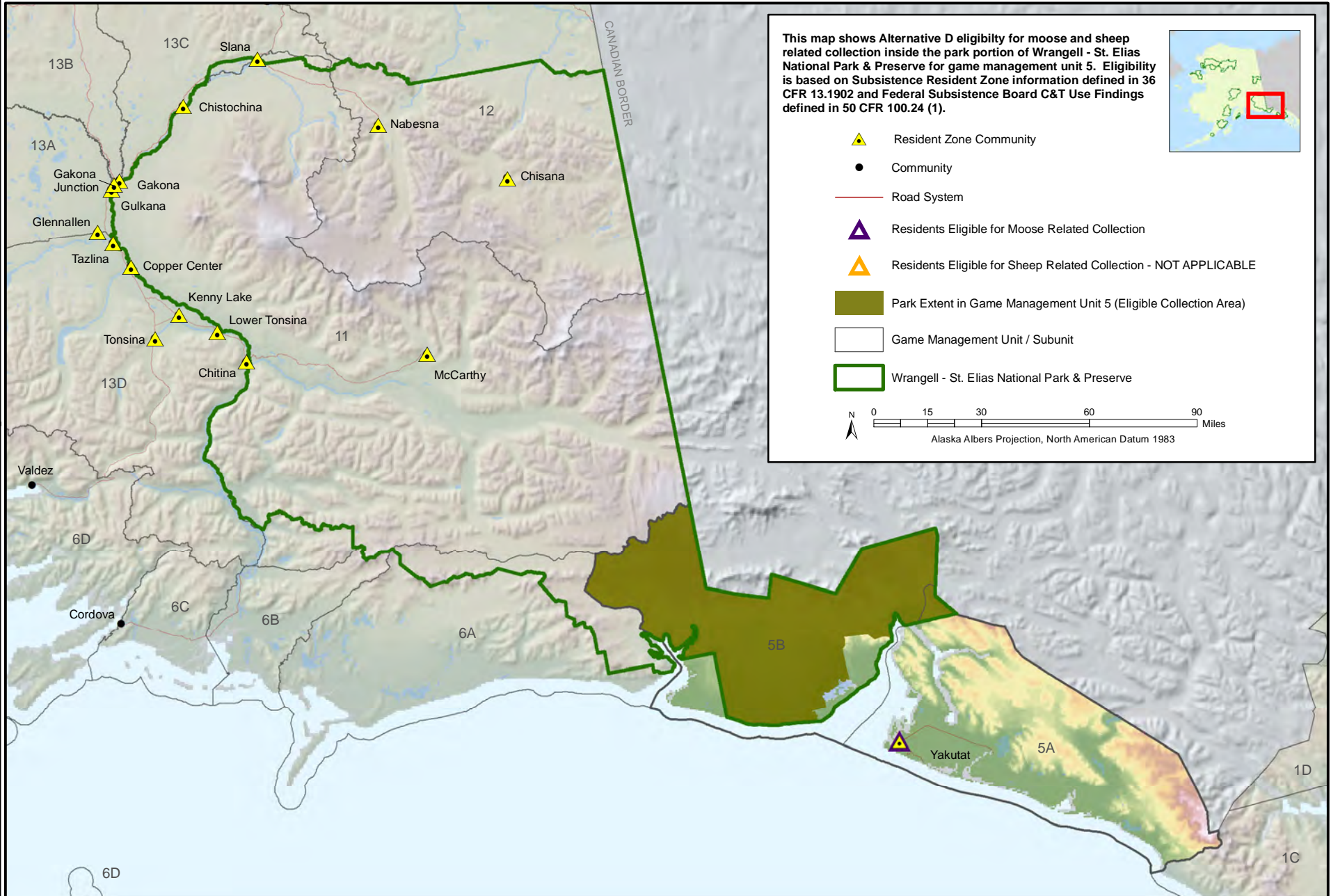




# Alternative D: Collections Limited by Areas and Species with Required Permits inside the National Park

Wrangell - St. Elias National Park and Preserve

Alaska Region  
National Park Service  
U.S. Department of the Interior

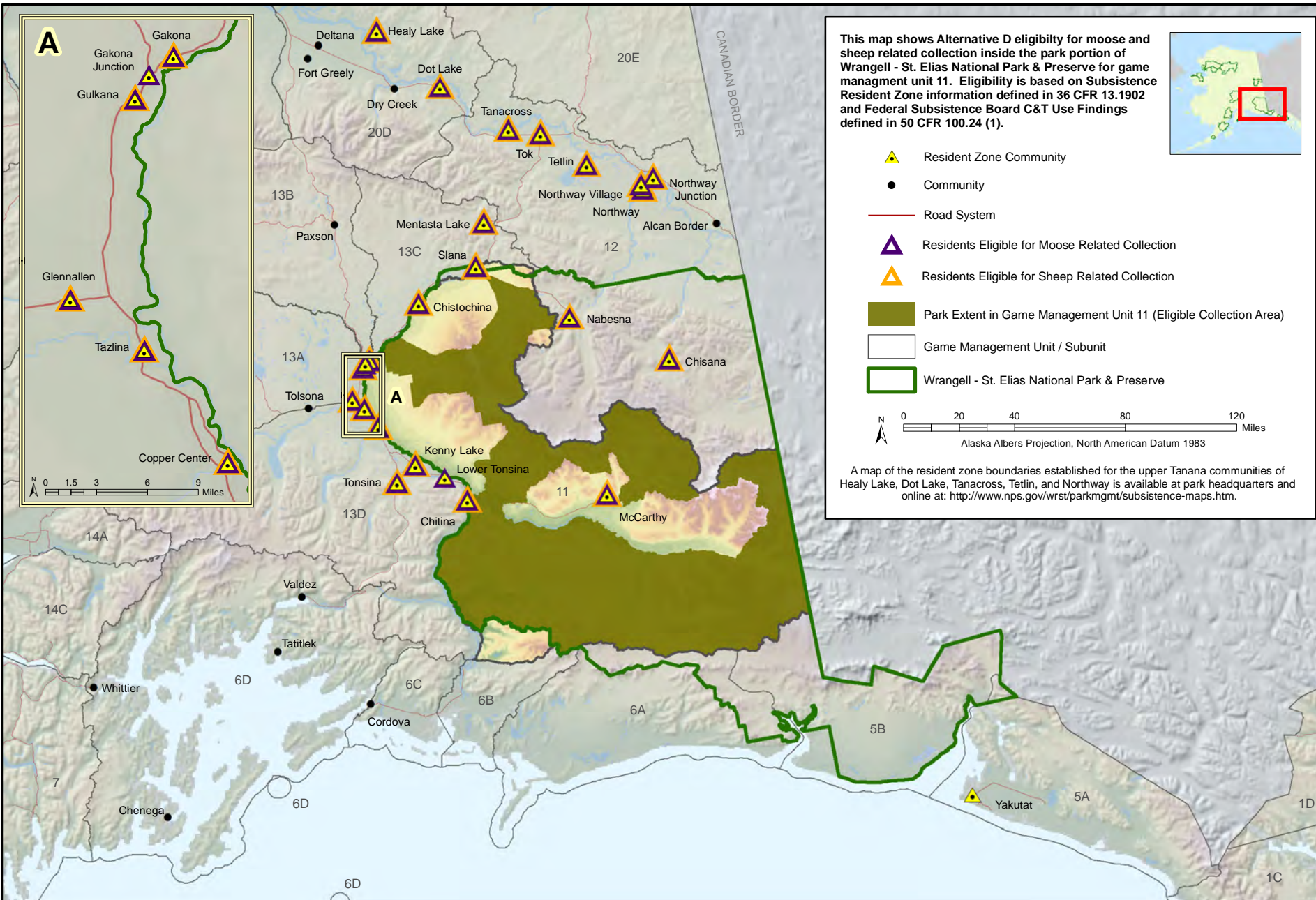




# Alternative D: Collections Limited by Areas and Species with Required Permits inside the National Park

Wrangell - St. Elias National Park and Preserve

Alaska Region  
National Park Service  
U.S. Department of the Interior

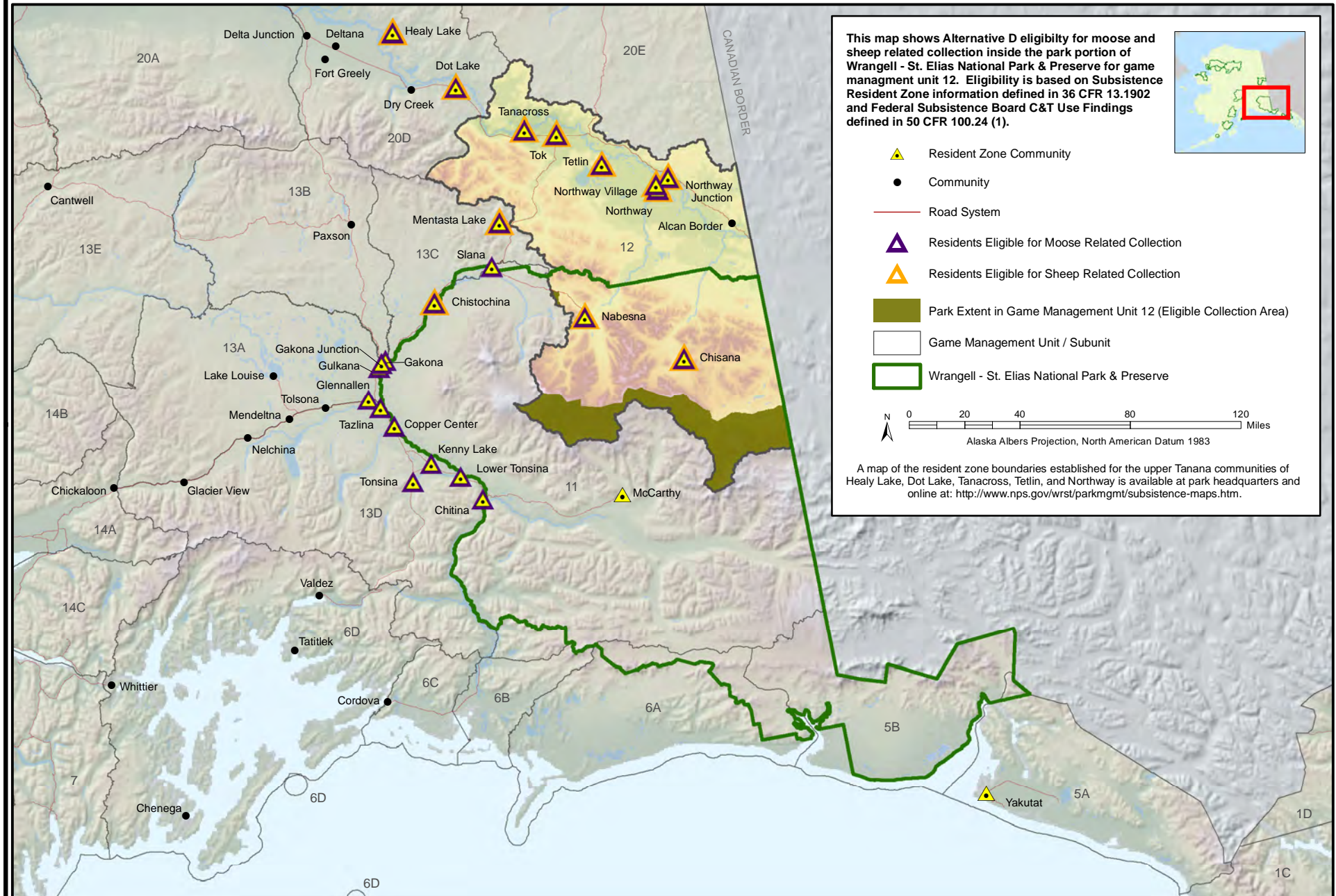




# Alternative D: Collections Limited by Areas and Species with Required Permits inside the National Park

## Wrangell - St. Elias National Park and Preserve

Alaska Region  
National Park Service  
U.S. Department of the Interior

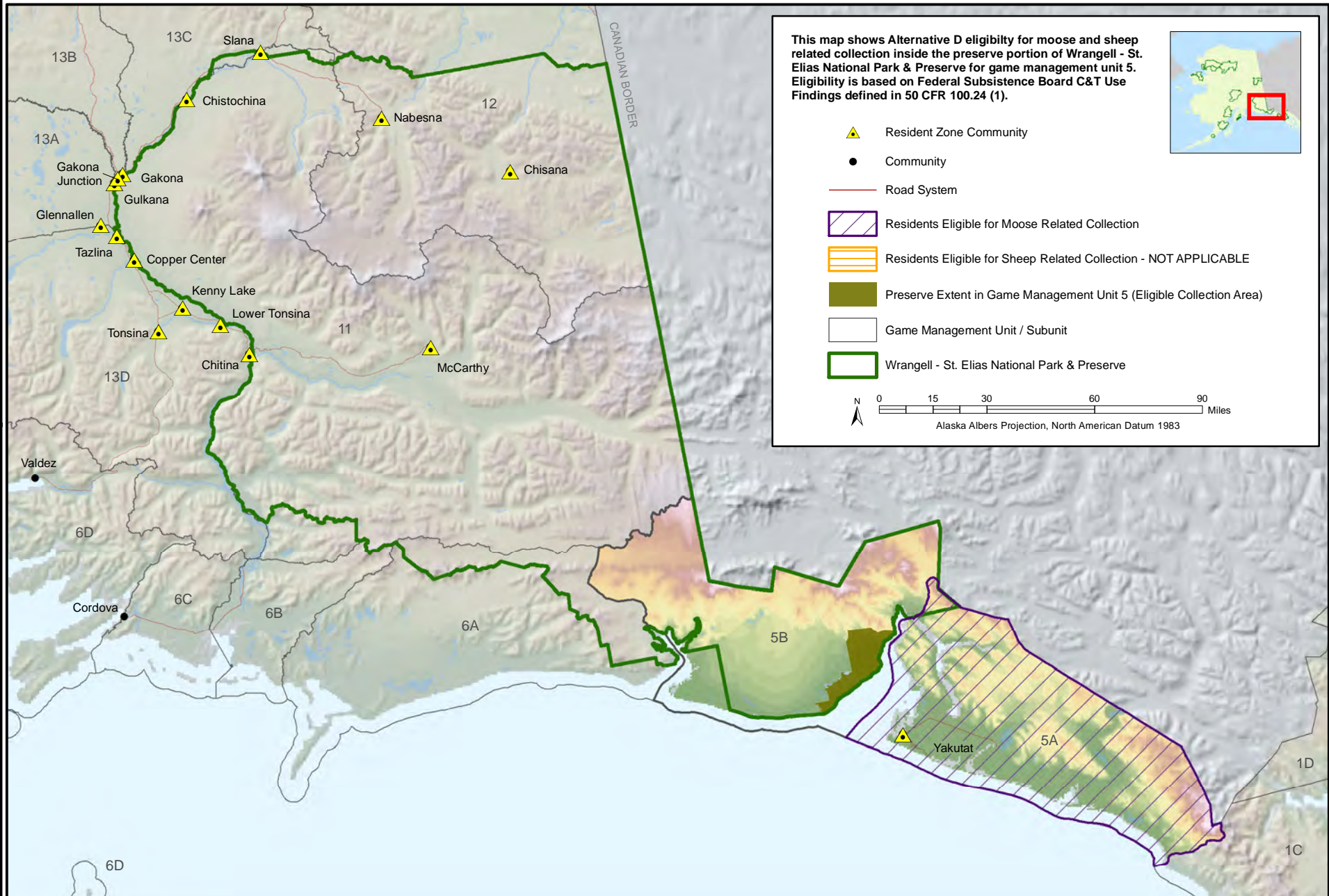




# Alternative D: Collections Limited by Areas and Species with Required Permits inside the National Preserve

Wrangell - St. Elias National Park and Preserve

Alaska Region  
National Park Service  
U.S. Department of the Interior





# Alternative D: Collections Limited by Areas and Species with Required Permits inside the National Preserve

Wrangell - St. Elias National Park and Preserve

Alaska Region  
National Park Service  
U.S. Department of the Interior



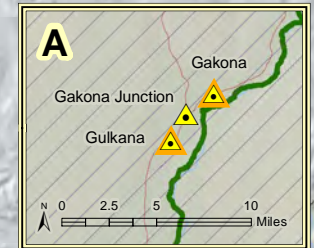
This map shows Alternative D eligibility for moose and sheep related collection inside the preserve portion of Wrangell - St. Elias National Park & Preserve for game management unit 11. Eligibility is based on Federal Subsistence Board C&T Use Findings defined in 50 CFR 100.24(1).



- Resident Zone Community
- Community
- Road System
- or Residents Eligible for Moose Related Collection
- or Residents Eligible for Sheep Related Collection
- Residents Eligible for Sheep Related Collection (Road sections defined in 50 CFR 100.24(1))
- Preserve Extent in Game Management Unit 11 (Eligible Collection Area)
- Game Management Unit / Subunit
- Wrangell - St. Elias National Park & Preserve

0 20 40 80 120 Miles  
Alaska Albers Projection, North American Datum 1983

A map of the resident zone boundaries established for the upper Tanana communities of Healy Lake, Dot Lake, Tanacross, Tetlin, and Northway is available at park headquarters and online at: <http://www.nps.gov/wrst/parkmgmt/subsistence-maps.htm>.





# Alternative D: Collections Limited by Areas and Species with Required Permits inside the National Preserve

Wrangell - St. Elias National Park and Preserve

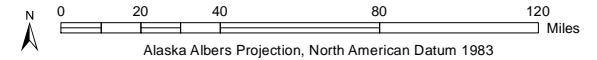
Alaska Region  
National Park Service  
U.S. Department of the Interior



This map shows Alternative D eligibility for moose and sheep related collection inside the preserve portion of Wrangell - St. Elias National Park & Preserve for game management unit 12. Eligibility is based on Federal Subsistence Board C&T Use Findings defined in 50 CFR 100.24(1).



- Resident Zone Community
- Community
- or Residents Eligible for Moose Related Collection
- or Residents Eligible for Sheep Related Collection
- Preserve Extent in Game Management Unit 12 (Eligible Collection Area)
- Game Management Unit / Subunit
- Wrangell - St. Elias National Park & Preserve



A map of the resident zone boundaries established for the upper Tanana communities of Healy Lake, Dot Lake, Tanacross, Tetlin, and Northway is available at park headquarters and online at: <http://www.nps.gov/wrst/parkmgmt/subsistence-maps.htm>.

