

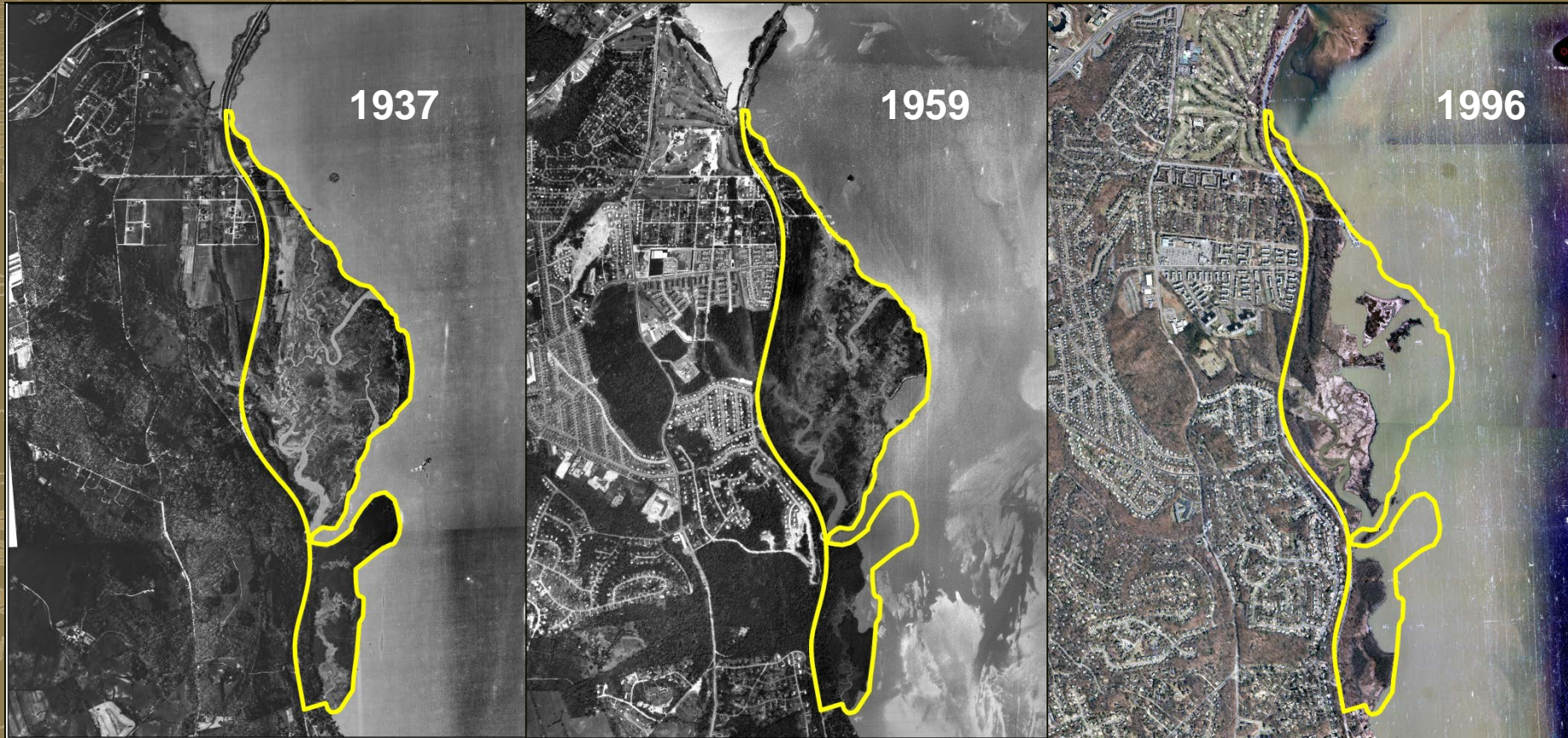
Draft Dyke Marsh Wetland Restoration and Long-term Management Plan/EIS

Public Meeting

February 26, 2014



Background



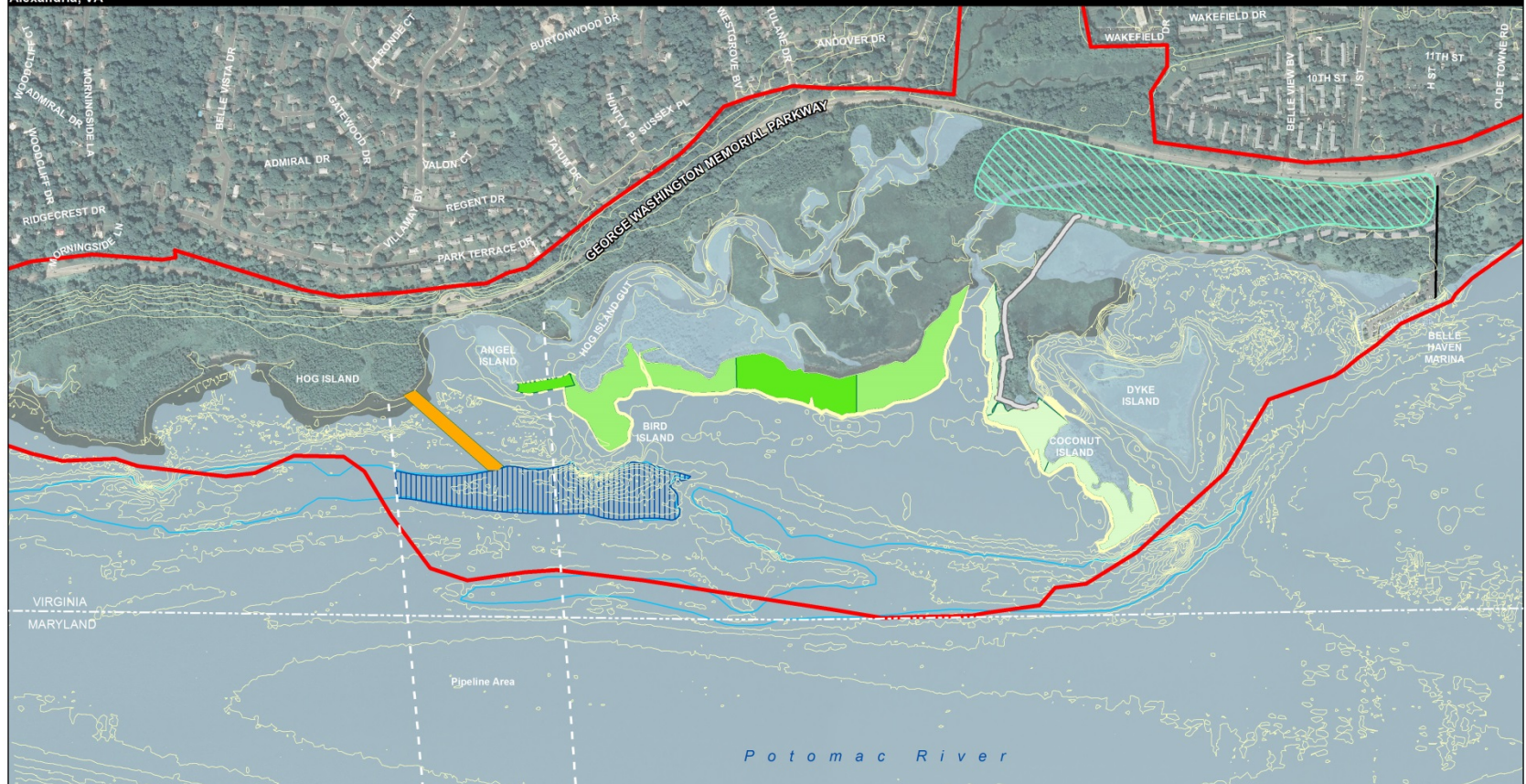
EIS Milestones to date

- **November 2007:** Internal scoping initiating the EIS was held at the park. Purpose, need, objectives, issues and preliminary alternative concepts were identified.
- **April 2008:** The Notice of Intent to prepare an EIS was published and a public scoping meeting was held.
- **May 2008 – December 2013:** Alternatives development and completion of Draft plan/EIS. USACE and USGS studies and publications assisted in refining alternatives and describing the impacts of the alternatives.
- **January 2014:** Draft plan/EIS released to the public.



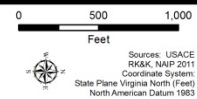
Dyke Marsh Wetland Restoration and
Long Term Management Plan/
Environmental Impact Statement
Alexandria, VA

Alternative B



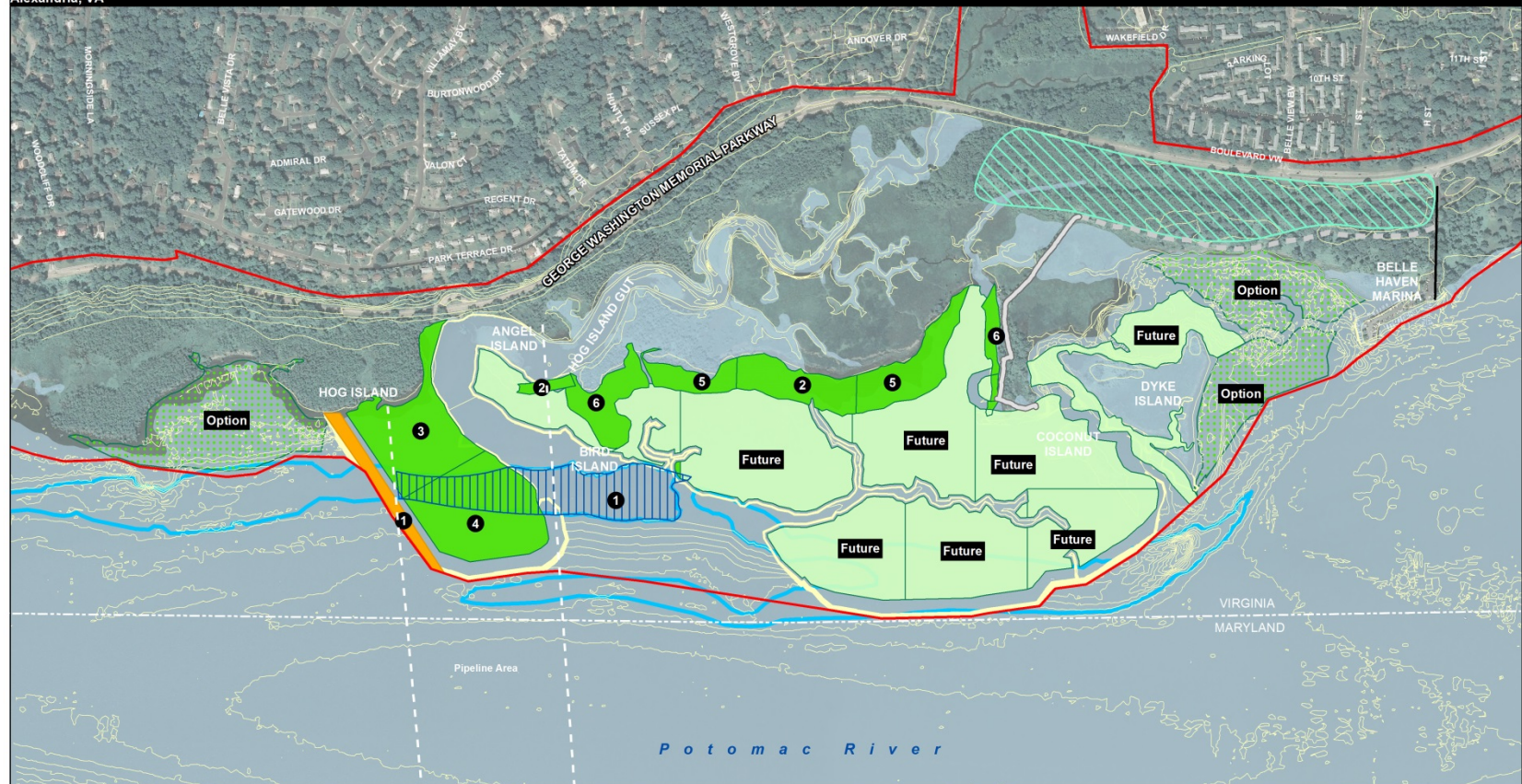
Legend

- | | | | |
|--------------------------------------|---|--|-------------------|
| NPS Boundary | Conceptual Marsh Cell Configuration & Development | Elevation Contour Line | Deep Channel Fill |
| Marina Drive | Phase 1 Cells | Swamp Forest | Deep Channel/Scar |
| Haul Road and Boardwalk | Phase 2 Cells | Breakwater | |
| Area of Proposed Breaks in Haul Road | Phase 3 Cells | Elevation contour lines shown in thin light yellow line.
Steep slopes are indicated by the appearance of a thick yellow line. | |



Dyke Marsh Wetland Restoration and
Long Term Management Plan/
Environmental Impact Statement
Alexandria, VA

Alternative C



Legend

- NPS Boundary
- Marina Drive
- Haul Road and Boardwalk
- Area of Proposed Breaks in Haul Road

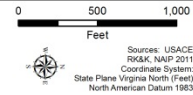
Conceptual Marsh Cell Configuration

- Phase 1 Cells
- Phase 2 Cells
- Optional Fill

- Elevation Contour Line
- Swamp Forest
- Breakwater

- Deep Channel Fill
- Deep Channel/Scar

Elevation contour lines shown in thin light yellow line.
Steep slopes are indicated by the appearance of a thick yellow line.



How to Comment

The public comment period closes on March 18, 2014.

- Submit written comments tonight.
- Submit comments electronically via the Park Planning, Environment and Public Comment system (PEPC) at <http://parkplanning.nps.gov/dykemarshdeis>.
- Send written comments to:
Superintendent
Attn: Dyke Marsh Wetland Restoration
George Washington Memorial Parkway
700 George Washington Memorial Parkway
Turkey Run Park Headquarters
McLean, Virginia 22101



Tips for providing comments

- Provide a comment rather than a vote. When stating a preference for one alternative over another, give a reason why.
- Be specific and provide as much detail as possible.
- Relate your comments back to the draft plan/EIS to ensure your comments are understood and your concerns are fully addressed in the final plan/EIS.



Substantive Comments

- All comments will be reviewed, but responses are only required for substantive comments.
- Substantive comments are defined as those that do one or more of the following:
 - Question, with reasonable basis, the accuracy of information in the draft plan/EIS.
 - Question, with reasonable basis, the adequacy of environmental, cultural, or socioeconomic analysis.
 - Present reasonable alternatives other than those presented in the draft plan/EIS.
 - Cause changes or revisions to the management actions proposed in the alternatives (Director's Order 12 Handbook 4.6A).



Responding to Comments

- There are several options for responding to substantive public comments:
 - Modify the alternatives as requested.
 - Develop and evaluate suggested alternatives.
 - Supplement, improve or modify the analysis.
 - Make factual corrections.
 - Explain why the comments do not warrant further agency response, citing sources, authorities, or reasons that support the agency's position (CEQ 1503.4).
- The final plan/EIS will contain summaries of the substantive comments and responses to those comments in an appendix.



Next Steps

- Analyze and respond to public comments received on Draft plan/EIS and revise plan/EIS.
- Release Final plan/EIS to the public.
- Prepare the Record of Decision documenting the actions constituting the approved plan.
- The Regional Director will sign the Record of Decision following a 30-day no-action period.
- Begin implementation.



This presentation and all posters will be available on the PEPC site at:

<http://parkplanning.nps.gov/dykemarshdeis>

