

- GOAL OF THE PROJECT:
- REDUCE VISITOR CONFLICT AND IMPROVE VISITOR EXPERIENCE
 - INCREASE SAFETY
 - PROVIDE SEPARATED ACTIVITIES
 - ENHANCE VISITOR SERVICES INCLUDING WATER FOUNTAIN, BIKE RACKS, SIGNAGE, INTERPRETATION
 - UPGRADE TRAIL TO MEET MINIMUM DESIGN STANDARDS FOR MOUNT VERNON TRAIL

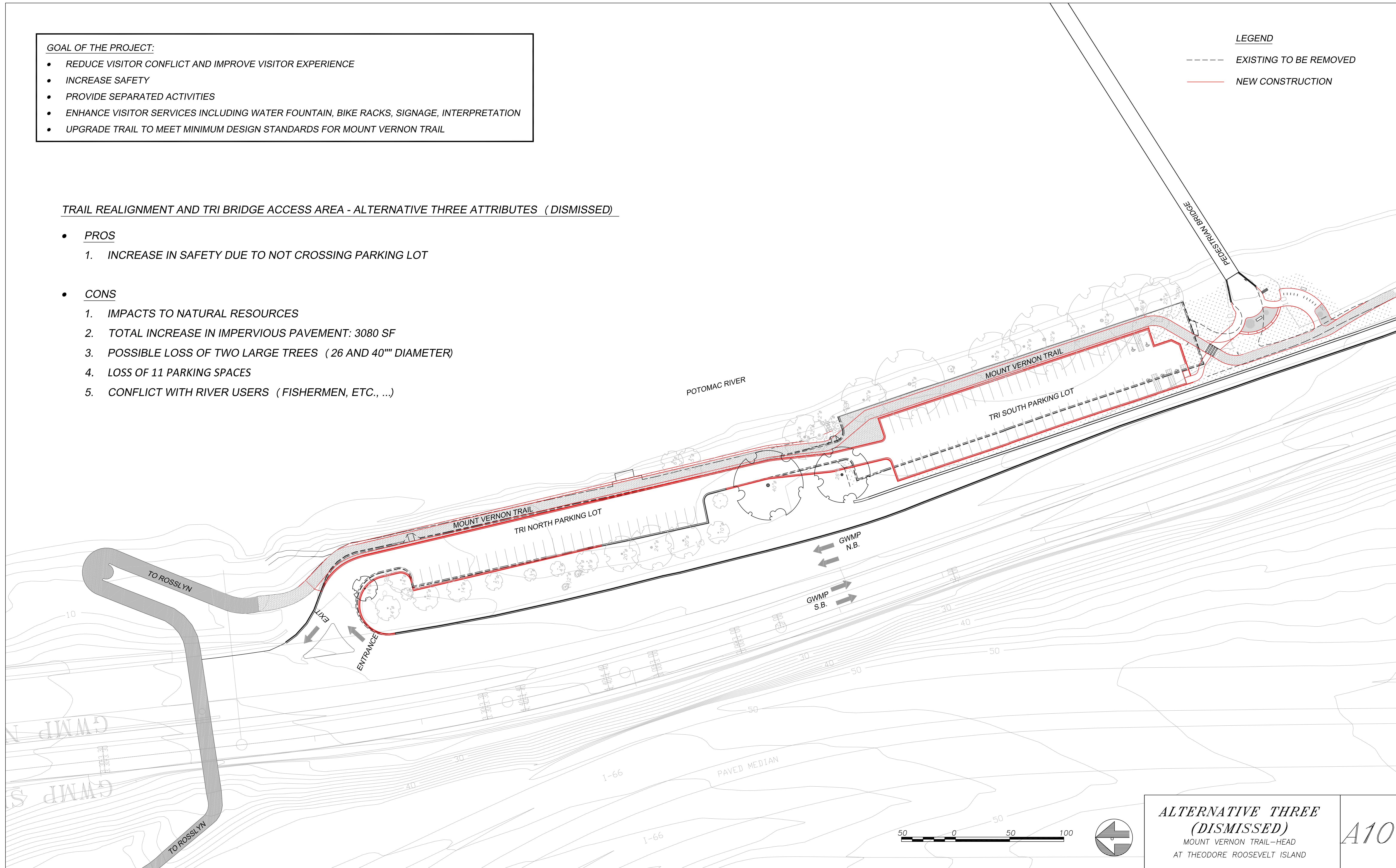
LEGEND

EXISTING TO BE REMOVED

NEW CONSTRUCTION

TRAIL REALIGNMENT AND TRI BRIDGE ACCESS AREA - ALTERNATIVE THREE ATTRIBUTES (DISMISSED)

- PROS
 - INCREASE IN SAFETY DUE TO NOT CROSSING PARKING LOT
- CONS
 - IMPACTS TO NATURAL RESOURCES
 - TOTAL INCREASE IN IMPERVIOUS PAVEMENT: 3080 SF
 - POSSIBLE LOSS OF TWO LARGE TREES (26 AND 40" DIAMETER)
 - LOSS OF 11 PARKING SPACES
 - CONFLICT WITH RIVER USERS (FISHERMEN, ETC., ...)



GOAL OF THE PROJECT:

- REDUCE VISITOR CONFLICT AND IMPROVE VISITOR EXPERIENCE
- INCREASE SAFETY
- PROVIDE SEPARATED ACTIVITIES
- ENHANCE VISITOR SERVICES INCLUDING WATER FOUNTAIN, BIKE RACKS, SIGNAGE, INTERPRETATION
- UPGRADE TRAIL TO MEET MINIMUM DESIGN STANDARDS FOR MOUNT VERNON TRAIL

LEGEND

- EXISTING TO BE REMOVED
- NEW CONSTRUCTION

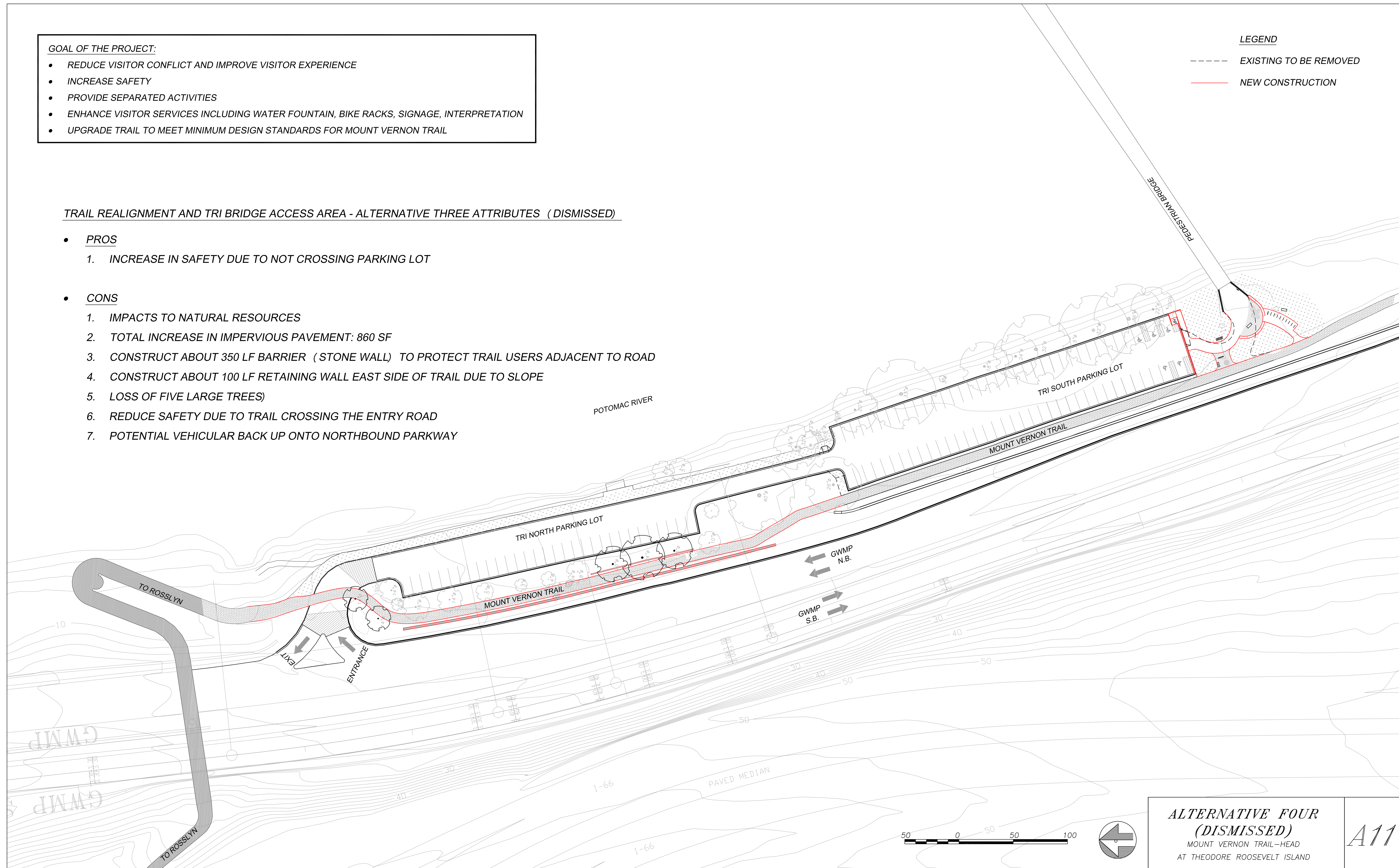
TRAIL REALIGNMENT AND TRI BRIDGE ACCESS AREA - ALTERNATIVE THREE ATTRIBUTES (DISMISSED)

• PROS

1. INCREASE IN SAFETY DUE TO NOT CROSSING PARKING LOT

• CONS

1. IMPACTS TO NATURAL RESOURCES
2. TOTAL INCREASE IN IMPERVIOUS PAVEMENT: 860 SF
3. CONSTRUCT ABOUT 350 LF BARRIER (STONE WALL) TO PROTECT TRAIL USERS ADJACENT TO ROAD
4. CONSTRUCT ABOUT 100 LF RETAINING WALL EAST SIDE OF TRAIL DUE TO SLOPE
5. LOSS OF FIVE LARGE TREES)
6. REDUCE SAFETY DUE TO TRAIL CROSSING THE ENTRY ROAD
7. POTENTIAL VEHICULAR BACK UP ONTO NORTHBOUND PARKWAY



**ALTERNATIVE FOUR
(DISMISSED)**
MOUNT VERNON TRAIL—HEAD
AT THEODORE ROOSEVELT ISLAND

A11