

GOAL OF THE PROJECT:

- REDUCE VISITOR CONFLICT AND IMPROVE VISITOR EXPERIENCE
- INCREASE SAFETY
- PROVIDE SEPARATED ACTIVITIES
- ENHANCE VISITOR SERVICES INCLUDING WATER FOUNTAIN, BIKE RACKS, SIGNAGE, INTERPRETATION
- UPGRADE TRAIL TO MEET MINIMUM DESIGN STANDARDS FOR MOUNT VERNON TRAIL

LEGEND

- EXISTING TO BE REMOVED
- NEW CONSTRUCTION

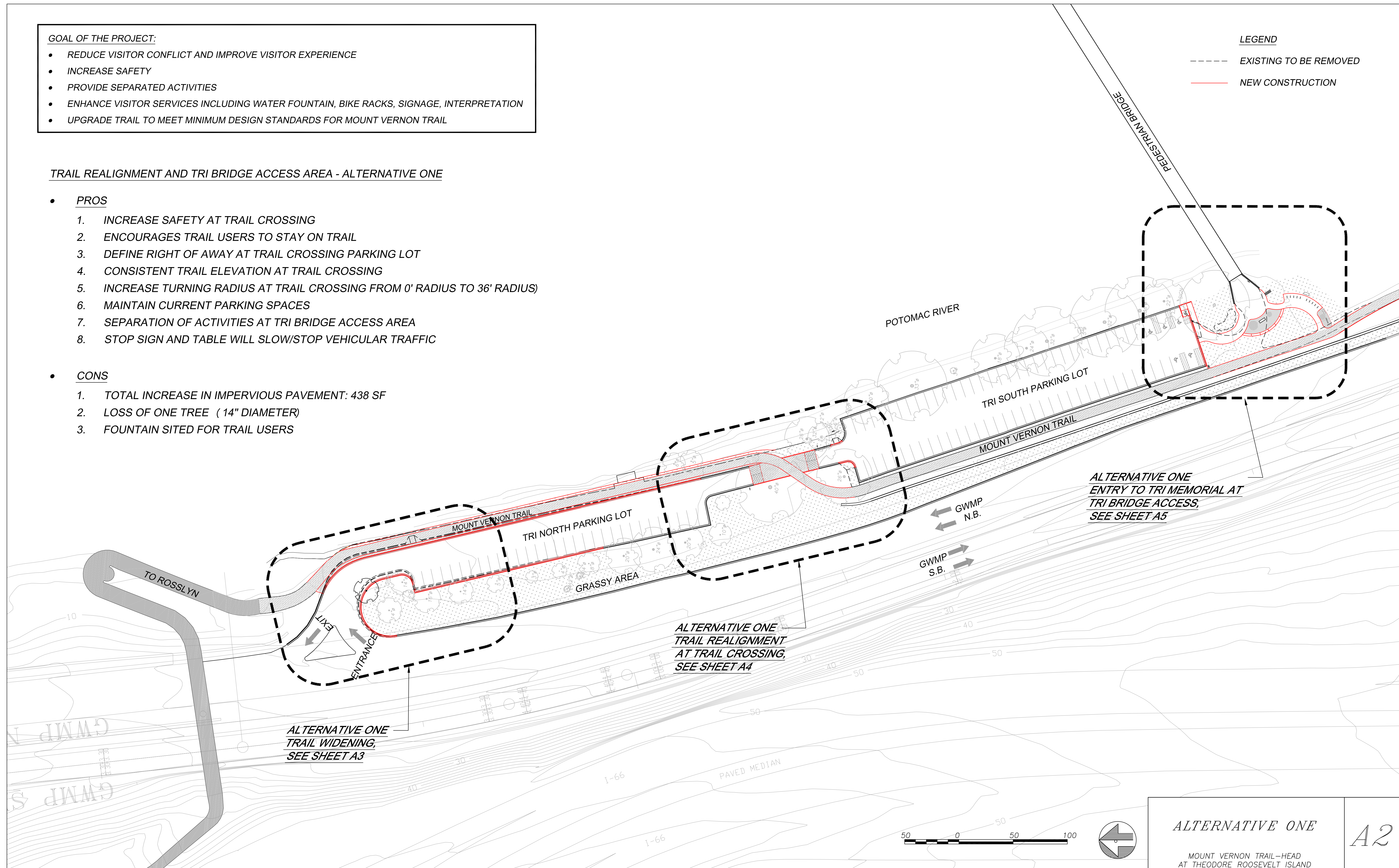
TRAIL REALIGNMENT AND TRI BRIDGE ACCESS AREA - ALTERNATIVE ONE

• PROS

1. INCREASE SAFETY AT TRAIL CROSSING
2. ENCOURAGES TRAIL USERS TO STAY ON TRAIL
3. DEFINE RIGHT OF AWAY AT TRAIL CROSSING PARKING LOT
4. CONSISTENT TRAIL ELEVATION AT TRAIL CROSSING
5. INCREASE TURNING RADIUS AT TRAIL CROSSING FROM 0' RADIUS TO 36' RADIUS)
6. MAINTAIN CURRENT PARKING SPACES
7. SEPARATION OF ACTIVITIES AT TRI BRIDGE ACCESS AREA
8. STOP SIGN AND TABLE WILL SLOW/STOP VEHICULAR TRAFFIC

• CONS

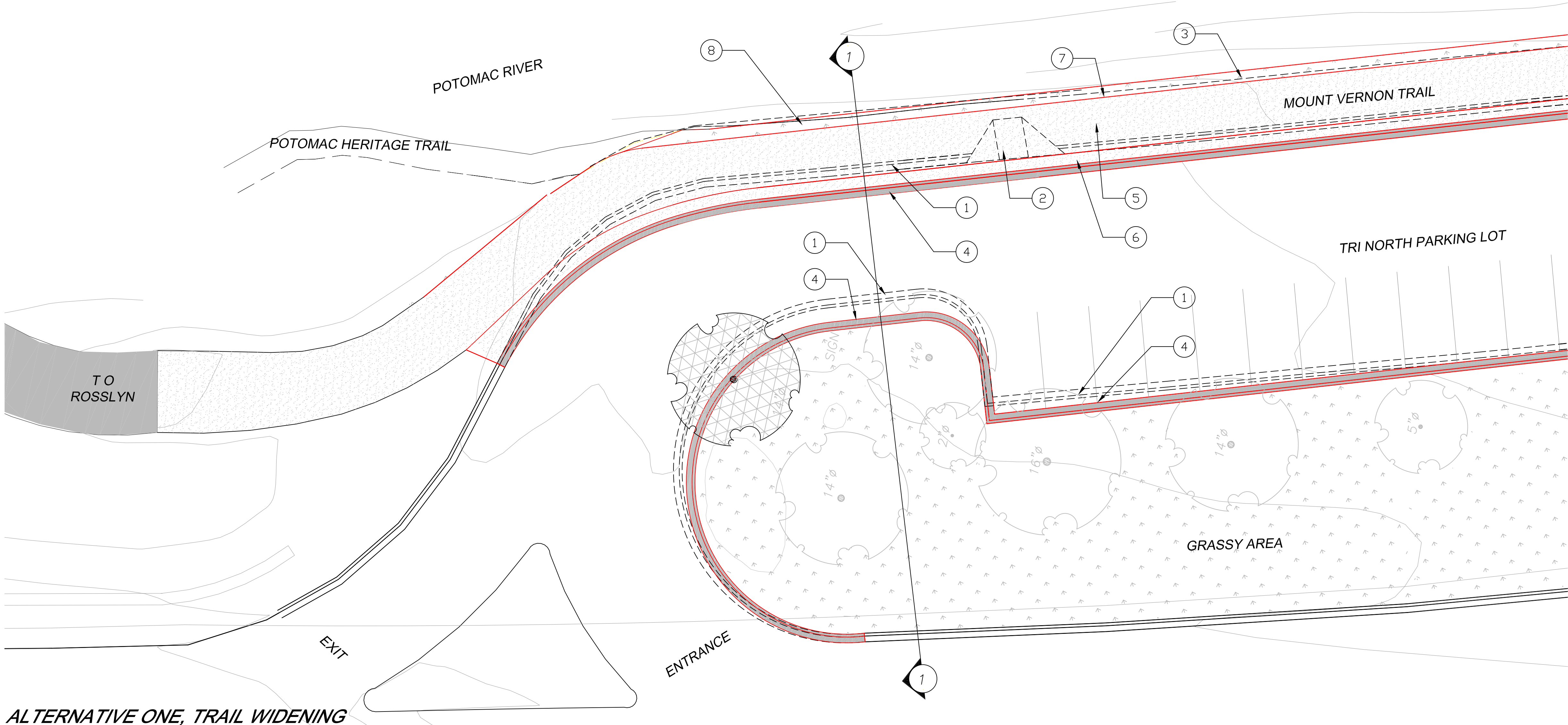
1. TOTAL INCREASE IN IMPERVIOUS PAVEMENT: 438 SF
2. LOSS OF ONE TREE (14" DIAMETER)
3. FOUNTAIN SITED FOR TRAIL USERS



ALTERNATIVE ONE

MOUNT VERNON TRAIL—HEAD
AT THEODORE ROOSEVELT ISLAND

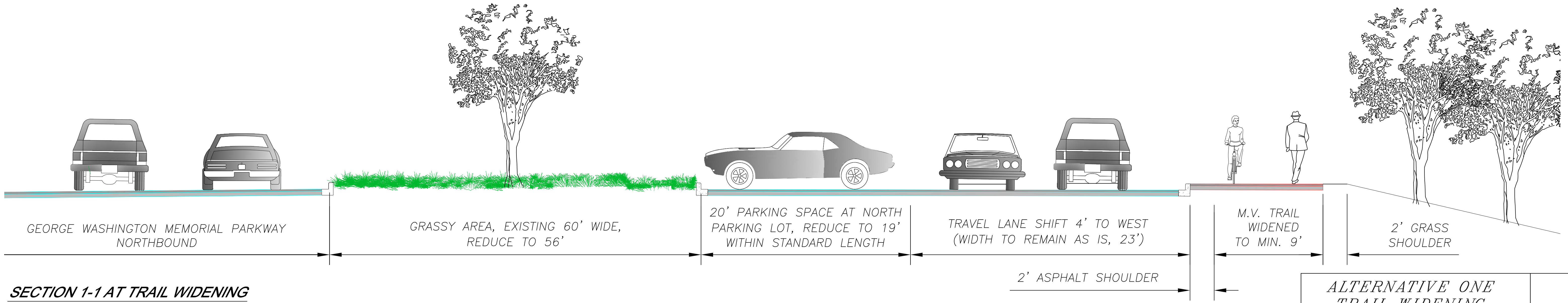
A2



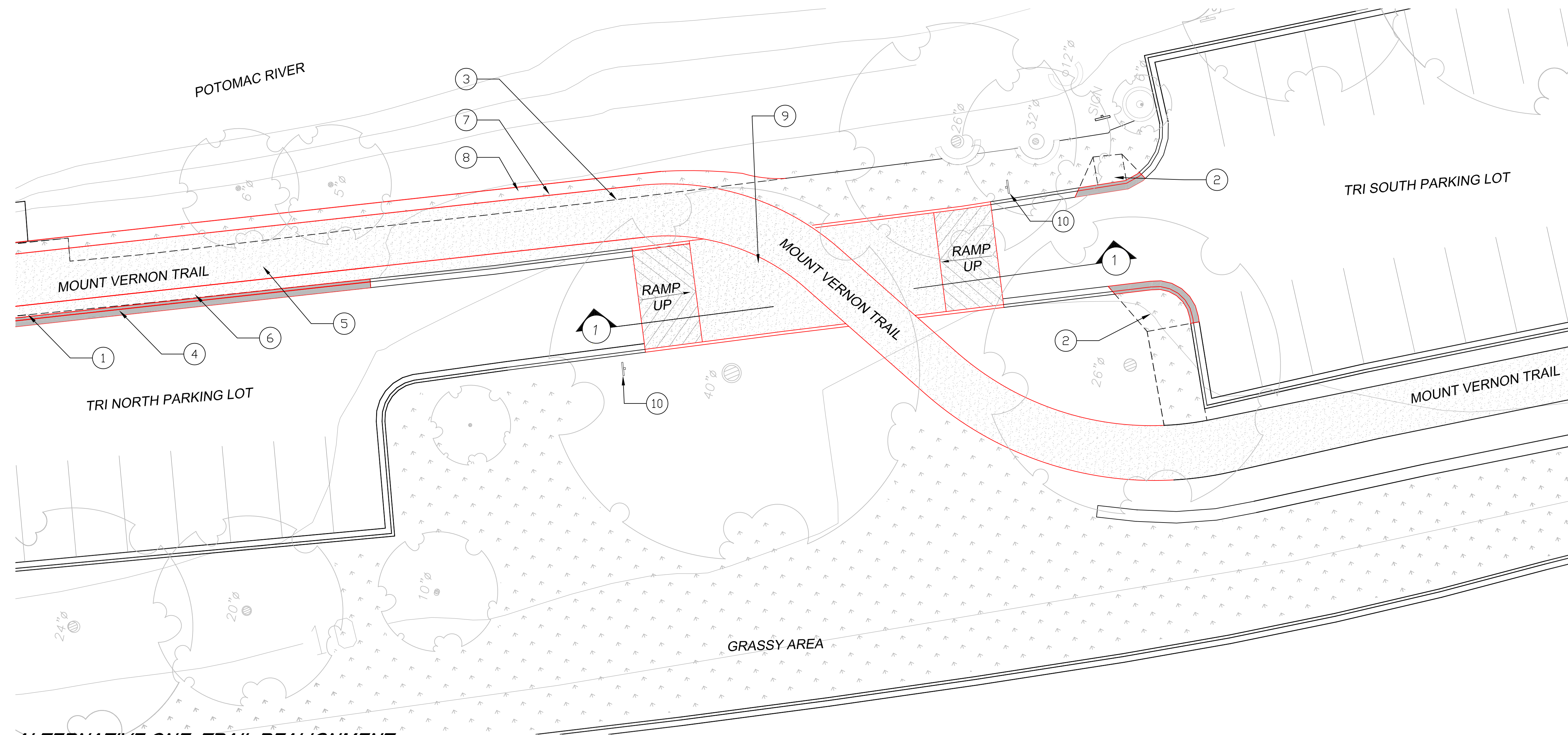
- NOTES:**
- 1. EXISTING CURB AND GUTTER
 - 2. EXISTING RAMP
 - 3. EXISTING EDGE OF MOUNT VERNON TRAIL
 - 4. NEW CURB GUTTER
 - 5. 9' WIDE ASPHALT TRAIL
 - 6. 2' WIDE ASPHALT SHOULDER
 - 7. EDGE OF REALIGN MOUNT VERNON TRAIL
 - 8. 2' WIDE GRASSY SHOULDER

- LEGEND**
- GRASSY AREA
 - CONCRETE CURB AND GUTTER
 - 9' WIDE ASPHALT TRAIL
 - CONCRETE CURB AND GUTTER TO BE REMOVED
 - CONCRETE RAMP TO BE REMOVED
 - TREE TO BE REMOVED

ALTERNATIVE ONE, TRAIL WIDENING



SECTION 1-1 AT TRAIL WIDENING




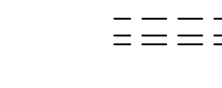



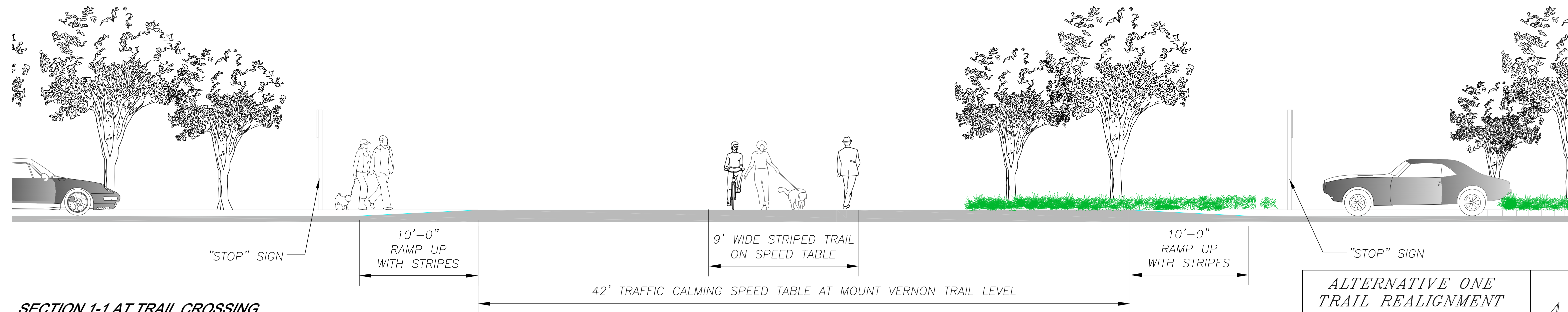
ALTERNATIVE ONE, TRAIL REALIGNMENT

NOTES:

1. EXISTING CURB AND GUTTER
2. EXISTING RAMP
3. EXISTING EDGE OF MOUNT VERNON TRAIL
4. NEW CURB GUTTER
5. 9' WIDE ASPHALT TRAIL
6. 2' WIDE ASPHALT SHOULDER
7. EDGE OF REALIGN MOUNT VERNON TRAIL
8. 2' WIDE GRASSY SHOULDER
9. TRAFFIC CALMING SPEED TABLE
10. STOP SIGN

LEGEND

-  GRASSY AREA
-  CONCRETE CURB AND GUTTER
-  9' WIDE ASPHALT TRAIL
-  CONCRETE CURB AND GUTTER TO BE REMOVED
-  CONCRETE RAMP TO BE REMOVED






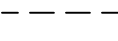

SECTION 1-1 AT TRAIL CROSSING

**ALTERNATIVE ONE
TRAIL REALIGNMENT
ENLARGEMENT**
MOUNT VERNON TRAIL—HEAD
AT THEODORE ROOSEVELT ISLAND

ENTRY TO TRI MEMORIAL

1. GATHERING AREA (STONE PAVER MATCH TO EXISTING PAVER AT ISLAND)
2. 18" HIGH STONE SEAT WALL (MATCH TO EXISTING STONE AT ISLAND)
3. BIKE PARKING
4. DRINKING FOUNTAIN
5. REGIONAL TRAIL MAP
6. INTERPRETIVE PANEL
7. DIRECTIONAL SIGNNAGE
8. REGULATIONS
9. ENTRY SIGN
10. REMOVE SHRUBS FOR CLEAR SIGHT LINE
11. ADA ACCESS RAMP AND PATH
12. EXISTING WAYSIDE TO BE RELOCATED
13. WILLOW OAK (1 1/2" CALIPER)
14. REDBUD (1" CALIPER)
15. MAPLE LEAF VIBURNUM (QUANTITY 41, 2 GALLON)
16. MULCH AREA

LEGEND

-  GRASSY AREA
-  CONCRETE CURB AND GUTTER
-  9' WIDE ASPHALT TRAIL
-  EXISTING ASPHALT TO BE REMOVED
-  CONCRETE RAMP TO BE REMOVED



LOW HEIGHT STONE SEAT WALL AT TRI MEMORIAL TO BE MATCHED



PAVERS AT TRI MEMORIAL TO BE MATCHED



GOAL OF THE PROJECT:

- REDUCE VISITOR CONFLICT AND IMPROVE VISITOR EXPERIENCE
- INCREASE SAFETY
- PROVIDE SEPARATED ACTIVITIES
- ENHANCE VISITOR SERVICES INCLUDING WATER FOUNTAIN, BIKE RACKS, SIGNAGE, INTERPRETATION
- UPGRADE TRAIL TO MEET MINIMUM DESIGN STANDARDS FOR MOUNT VERNON TRAIL

TRAIL REALIGNMENT AND TRI BRIDGE ACCESS AREA - ALTERNATIVE TWO

• PROS

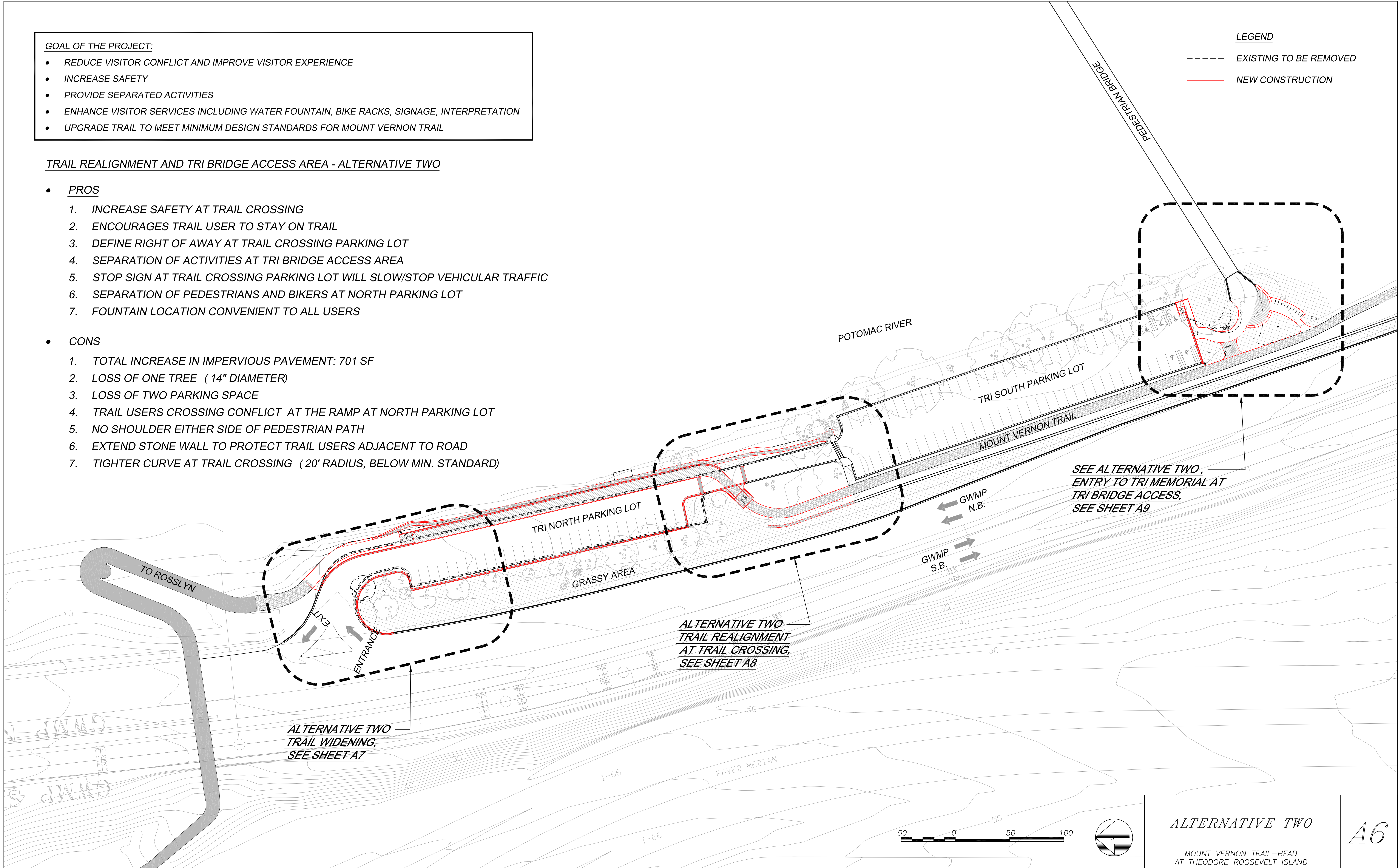
1. INCREASE SAFETY AT TRAIL CROSSING
2. ENCOURAGES TRAIL USER TO STAY ON TRAIL
3. DEFINE RIGHT OF AWAY AT TRAIL CROSSING PARKING LOT
4. SEPARATION OF ACTIVITIES AT TRI BRIDGE ACCESS AREA
5. STOP SIGN AT TRAIL CROSSING PARKING LOT WILL SLOW/STOP VEHICULAR TRAFFIC
6. SEPARATION OF PEDESTRIANS AND BIKERS AT NORTH PARKING LOT
7. FOUNTAIN LOCATION CONVENIENT TO ALL USERS

• CONS

1. TOTAL INCREASE IN IMPERVIOUS PAVEMENT: 701 SF
2. LOSS OF ONE TREE (14" DIAMETER)
3. LOSS OF TWO PARKING SPACE
4. TRAIL USERS CROSSING CONFLICT AT THE RAMP AT NORTH PARKING LOT
5. NO SHOULDER EITHER SIDE OF PEDESTRIAN PATH
6. EXTEND STONE WALL TO PROTECT TRAIL USERS ADJACENT TO ROAD
7. TIGHTER CURVE AT TRAIL CROSSING (20' RADIUS, BELOW MIN. STANDARD)

LEGEND

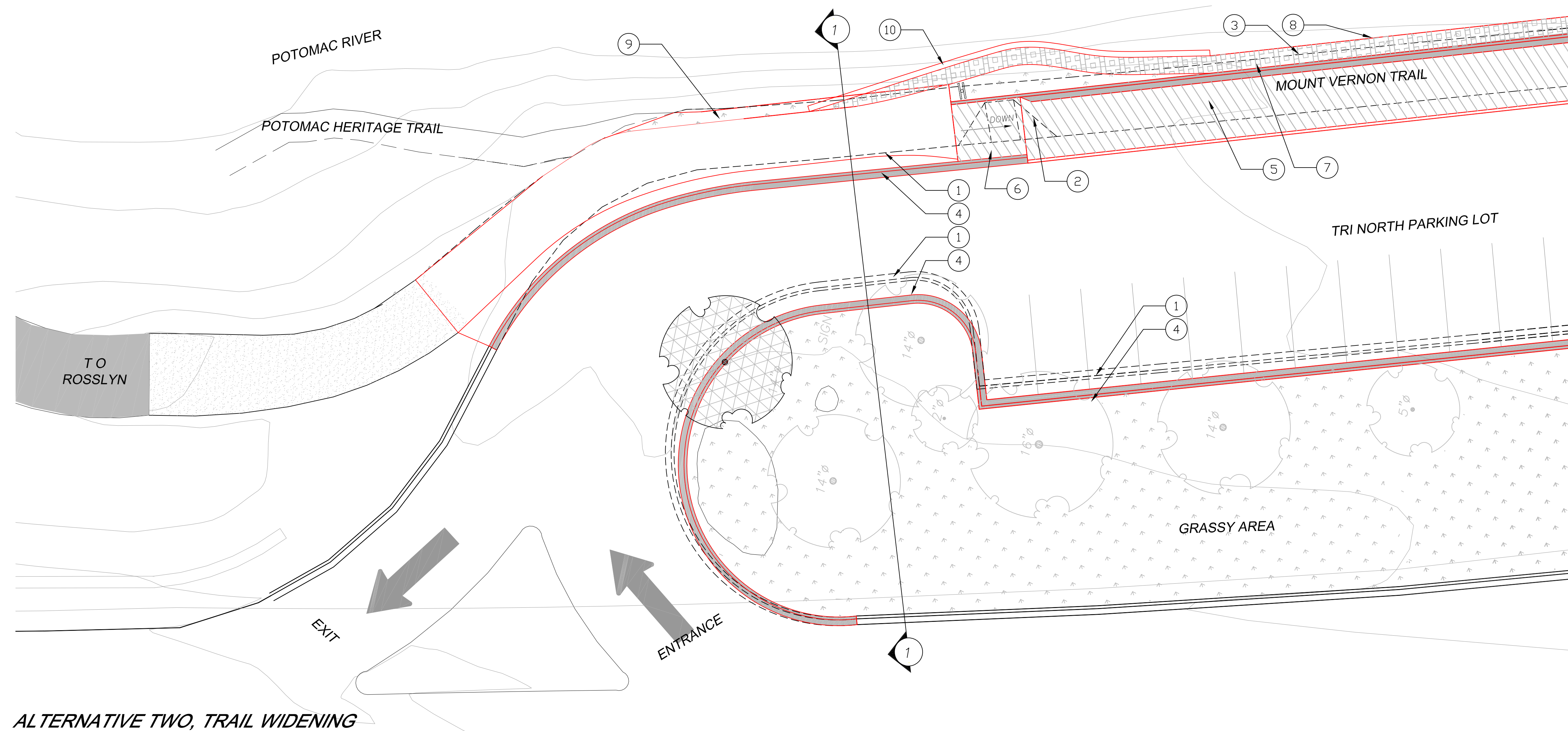
- EXISTING TO BE REMOVED
- NEW CONSTRUCTION



ALTERNATIVE TWO

MOUNT VERNON TRAIL—HEAD
AT THEODORE ROOSEVELT ISLAND

A6



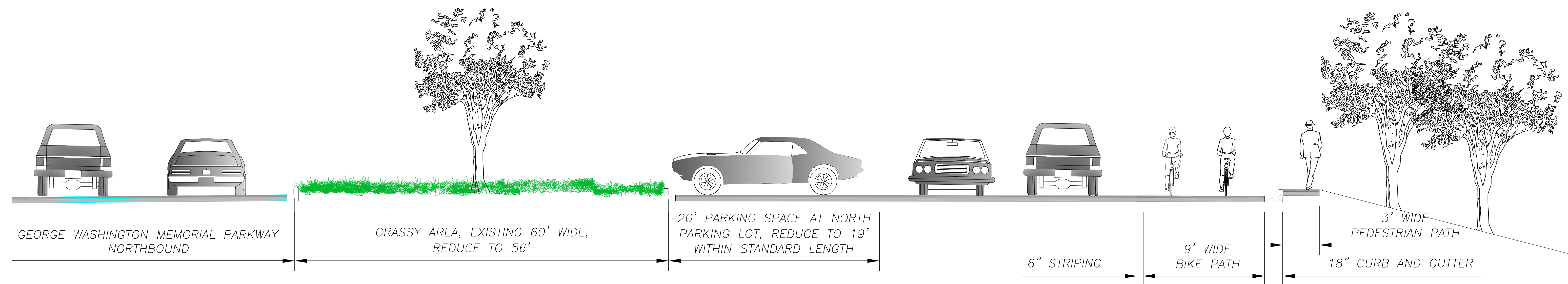
ALTERNATIVE TWO, TRAIL WIDENING

NOTES:

1. EXISTING CURB AND GUTTER
2. EXISTING RAMP
3. EXISTING EDGE OF MOUNT VERNON TRAIL
4. NEW CURB AND GUTTER
5. 9' WIDE BIKE PATH AT PARKING LOT LEVEL
6. RAMP FROM MOUNT VERNON TRAIL TO BIKE PATH AT PARKING LOT LEVEL
7. 3' WIDE PEDESTRIAN PATH AT MOUNT VERNON TRAIL LEVEL
8. NEW EDGE OF MOUNT VERNON TRAIL
9. 2' WIDE GRASSY SHOULDER
10. RETAINING WALL
11. ISLAND (GRASSY AREA)
12. DIRECTIONAL/YIELD SIGN

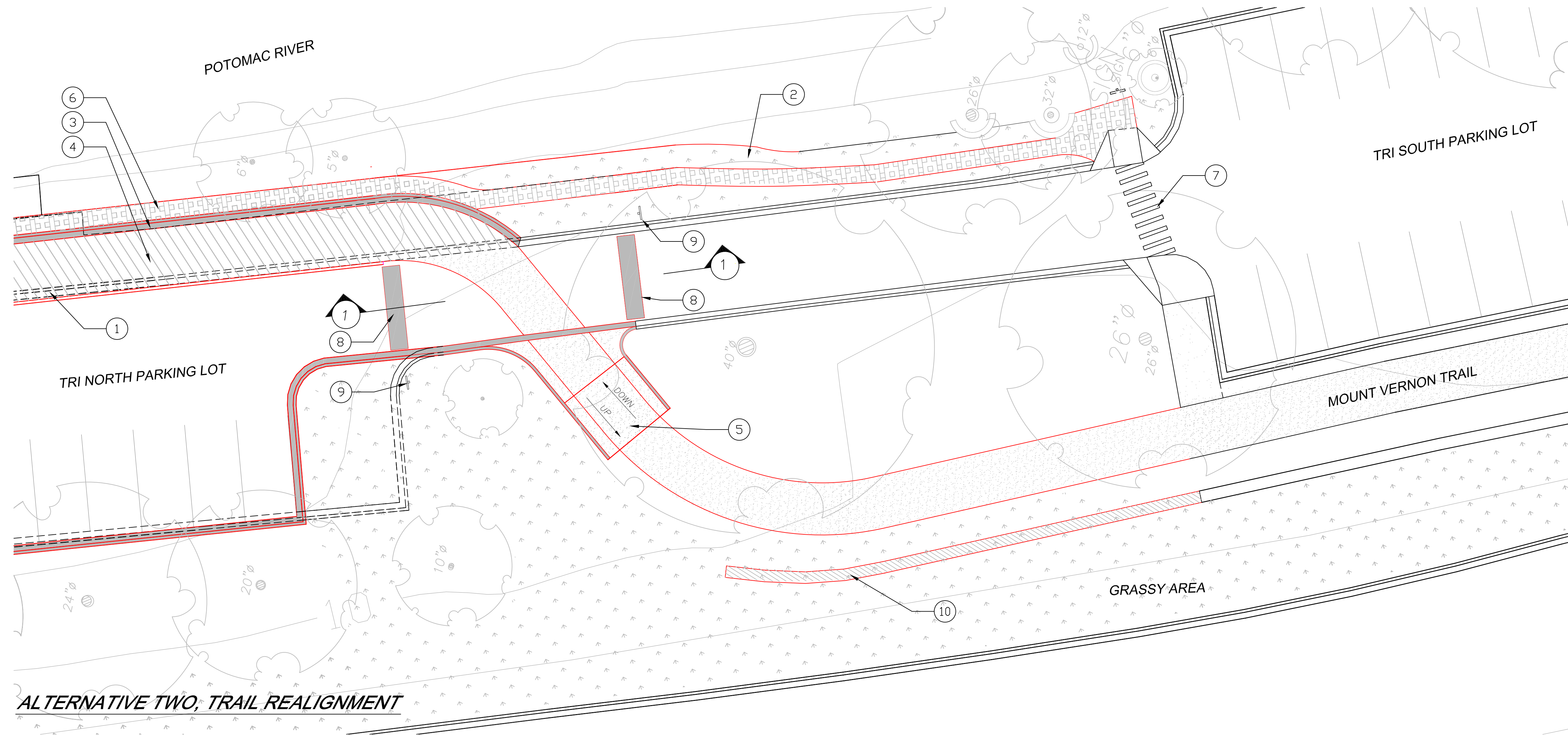
LEGEND

- GRASSY AREA
- CONCRETE CURB AND GUTTER
- MOUNT VERNON TRAIL
- 9' WIDE BIKE PATH
- 3' WIDE PEDESTRIAN PATH
- CONCRETE CURB AND GUTTER TO BE REMOVED
- CONCRETE RAMP TO BE REMOVED
- TREE TO BE REMOVED



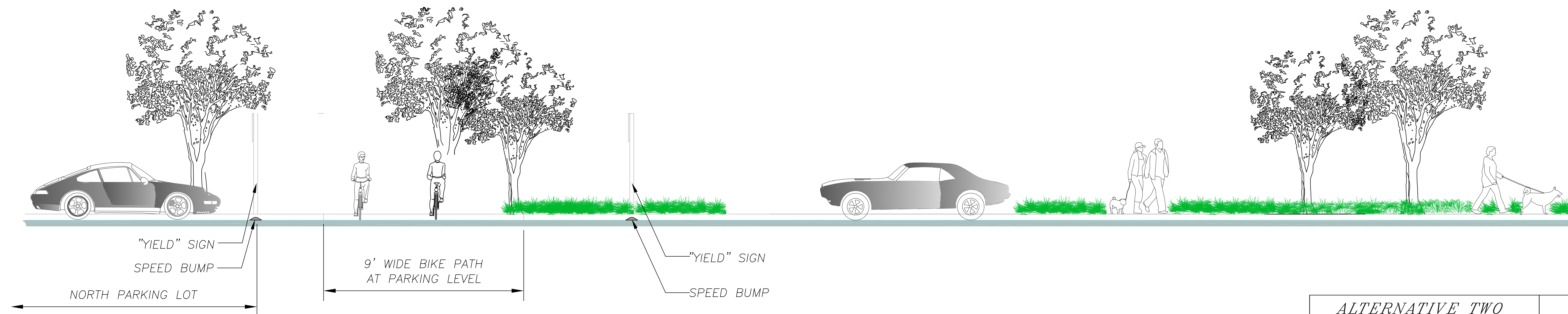
SECTION 1-1 AT TRAIL WIDENING

**ALTERNATIVE TWO
TRAIL REALIGNMENT
ENLARGEMENT**
MOUNT VERNON TRAIL-HEAD
AT THEODORE ROOSEVELT ISLAND



- NOTES:**
1. EXISTING CURB AND GUTTER
 2. EXISTING EDGE OF MOUNT VERNON TRAIL
 3. NEW CURB GUTTER
 4. 9' WIDE BIKE PATH AT PARKING LOT LEVEL
 5. RAMP UP FROM BIKE PATH AT PARKING LOT LEVEL TO MOUNT VERNON TRAIL
 6. 3' WIDE PEDESTRIAN PATH AT MOUNT VERNON TRAIL LEVEL
 7. PEDESTRIAN CROSSING
 8. SPEED BUMP
 9. YIELD SIGN
 10. EXTENTION OF EXISTING STONE WALL

- LEGEND**
- GRASSY AREA
 - CONCRETE CURB AND GUTTER
 - MOUNT VERNON TRAIL
 - 9' WIDE BIKE PATH
 - 3' WIDE PEDESTRIAN PATH
 - CONCRETE CURB AND GUTTER TO BE REMOVED
 - CONCRETE RAMP TO BE REMOVED








SECTION 1-1 AT TRAIL CROSSING

ENTRY TO TRI MEMORIAL

1. GATHERING AREA (STONE PAVER MATCH TO EXISTING PAVER AT ISLAND)
2. 18" HIGH STONE SEAT WALL (MATCH TO EXISTING STONE AT ISLAND)
3. BIKE PARKING
4. DRINKING FOUNTAIN
5. REGIONAL TRAIL MAP
6. INTERPRETIVE PANEL
7. DIRECTIONAL SIGNAGE
8. REGULATIONS
9. ENTRY SIGN
10. REMOVE SHRUBS FOR CLEAR SIGHT LINE
11. ADA ACCESS RAMP AND PATH
12. EXISTING WAYSIDE TO BE RELOCATED
13. WILLOW OAK (1 1/2" CALIPER)
14. REDBUD (1" CALIPER)

LEGEND

-  GRASSY AREA
-  CONCRETE CURB AND GUTTER
-  9' WIDE ASPHALT TRAIL
-  EXISTING ASPHALT TO BE REMOVED
-  CONCRETE RAMP TO BE REMOVED



LOW HEIGHT STONE SEAT WALL WITH CAP AT TRI MEMORIAL TO BE MATCHED



PAVERS AT TRI MEMORIAL TO BE MATCHED



ALTERNATIVE TWO
ENTRY TO MEMORIAL
ENLARGEMENT
MOUNT VERNON TRAIL—HEAD
AT THEODORE ROOSEVELT ISLAND