



Welcome

TO THE OPEN HOUSE FOR THE

Clara Barton House Rehabilitation Project

AGENDA

- 6:00 PM OPEN HOUSE
- 6:30 PM PRESENTATION
- 7:00 PM OPEN HOUSE

Project Area

U.S. Department of the Interior
National Park Service



POTOMAC
RIVER

CLARA BARTON PARKWAY

CHESAPEAKE & OHIO CANAL NATIONAL HISTORIC PARK

MACARTHUR BOULEVARD

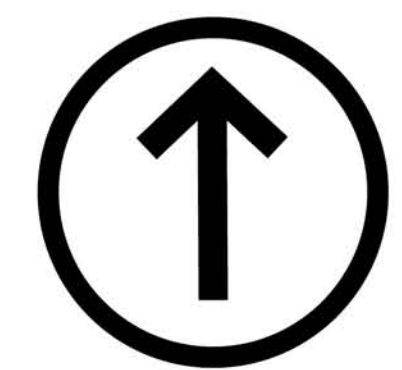
GLEN ECHO
PARK

LEGEND

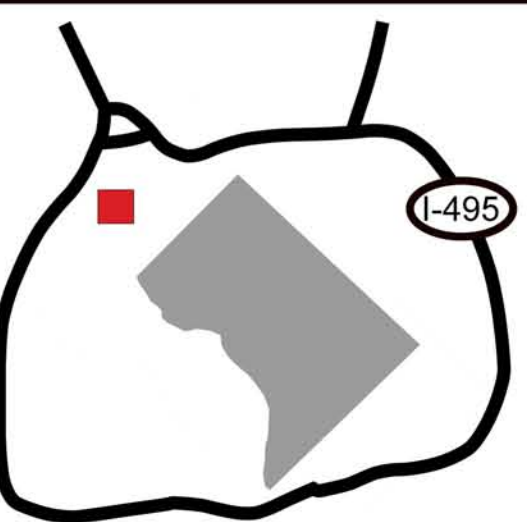


Clara Barton House

NORTH



VICINITY MAP



Clara Barton House Rehabilitation Project

Purpose & Need



THE PURPOSE OF THE PROJECT IS TO REPAIR AND REHABILITATE SEVERAL SECTIONS OF THE CLARA BARTON NATIONAL HISTORIC SITE, WHICH INCLUDES INSTALLING A FIRE SUPPRESSION SYSTEM, CONSTRUCTING A CLIMATE MANAGEMENT SYSTEM TO HELP PROTECT AND PRESERVE THE MUSEUM COLLECTIONS ON EXHIBIT AND IN STORAGE, AND REHABILITATING A FAILING METAL ROOF IN A MANNER THAT IS CONSISTENT WITH THE HISTORIC RESOURCES OF THE HOUSE.

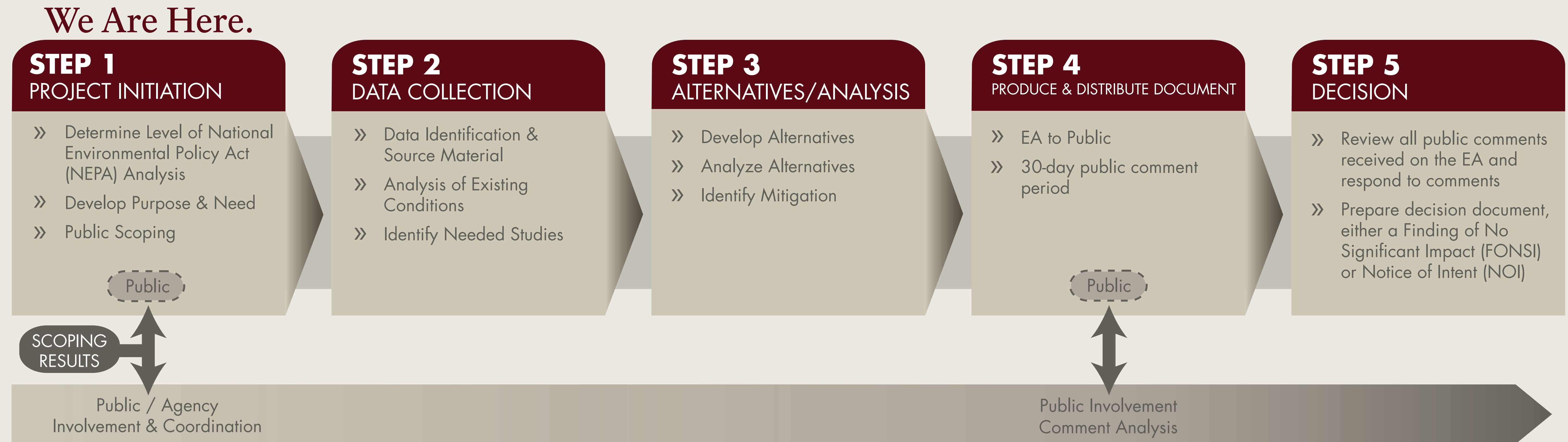
ACTION IS NEEDED BECAUSE THE HISTORIC STRUCTURE GREATLY EXCEEDS BUILDING AND FIRE CODE LIMITATIONS FOR UNPROTECTED WOODEN-FRAMED STRUCTURES AND HAS AN ESTIMATED "BURN TIME" OF ONLY FIVE TO SIX MINUTES. THE EXISTING FIRE ALARM AND DETECTION SYSTEM IN THE HOUSE CONSISTS OF SMOKE AND HEAT DETECTORS, MANUAL PULL STATIONS, AND AUDIO VISUAL NOTIFICATION APPLIANCE THAT ARE NO LONGER MANUFACTURED, RESULTING IN FUTURE DIFFICULTY OF ACQUIRING SPARE PARTS.

THE ACTION IS ALSO NEEDED BECAUSE THE EXISTING CLIMATE MANAGEMENT SYSTEM IS INADEQUATE AND INEFFICIENT. THE HEATING SYSTEM IS AT THE END OF ITS TWENTY-FIVE YEAR LIFE-CYCLE AND THE SMALL WATER CHILLER, CONDENSING UNIT, AND INDIVIDUAL ROOM AIR CONDITIONERS ARE PROVIDING INADEQUATE COOLING. WITH THE INADEQUATE TEMPERATURE AND HUMIDITY CONTROL BY THE CURRENT CLIMATE MANAGEMENT SYSTEM, THE HISTORIC WOOD STRUCTURES AND MUSEUM COLLECTIONS STORED IN THE HOUSE WILL BE ADVERSELY AFFECTED.

IN ADDITION, THE ACTION IS NEEDED BECAUSE THE LOW-PITCHED METAL ROOFS HAVE EXPERIENCED FREQUENT FAILURES FROM SEASONAL EXPANSION/CONTRACTION DUE TO LACK OF EXPANSION JOINTS, CAUSING DAMAGE TO THE INTERIOR CEILINGS AND WALLS. PORTIONS OF THE EXISTING WOODEN ROOF STRUCTURE ARE ROTTING AND THE RAFTERS ARE BOWED, BY DEFLECTION, CAUSING THE PONDING OF WATER AND LEAKING. FURTHERMORE, THERE IS CURRENTLY LITTLE TO NO INSULATION IN THE ROOF EXACERBATING PROBLEMS WITH CLIMATE CONTROL WITHIN THE HOUSE.



NEPA Process



DEFINE PURPOSE & NEED – FOR THE PROPOSED ACTION, NATIONAL PARK SERVICE DEFINES THE PROJECT AREA AND THE FRAMEWORK WITHIN WHICH REASONABLE ALTERNATIVES CAN BE DEVELOPED

INTERNAL AND EXTERNAL SCOPING - HOLD PUBLIC SCOPING MEETINGS TO INTRODUCE PROJECT AND IDENTIFY ISSUES

DATA COLLECTION - BEGIN RESOURCE INVENTORY AND ANALYSIS, DETERMINE RESOURCE TOPICS AFFECTED BY THE PROPOSED ACTION, AND INITIATE DATA COLLECTION/ RESEARCH NEEDED TO CARRY IMPACT ANALYSIS FORWARD

DESCRIBE AFFECTED ENVIRONMENT, DEVELOP ALTERNATIVES, AND PREPARE IMPACT ANALYSIS OF ALTERNATIVES

PREPARE ENVIRONMENTAL ASSESSMENT

RELEASE ENVIRONMENTAL ASSESSMENT (EA) FOR 30-DAY PUBLIC REVIEW AND COMMENT

NATIONAL PARK SERVICE TO REVIEW AND ADDRESS PUBLIC COMMENTS RECEIVED ON THE ENVIRONMENTAL ASSESSMENT AND RESPOND TO COMMENTS

PREPARE AND FINALIZE DECISION DOCUMENT, IF APPROPRIATE AND DRAFT SECTION 106 AGREEMENT DOCUMENT.

Clara Barton House Rehabilitation Project

Section 106 Process



SECTION 106 OF THE NATIONAL HISTORIC PRESERVATION ACT OF 1966 (NHPA) REQUIRES FEDERAL AGENCIES TO TAKE INTO ACCOUNT THE EFFECTS OF THEIR UNDERTAKINGS ON HISTORIC PROPERTIES.

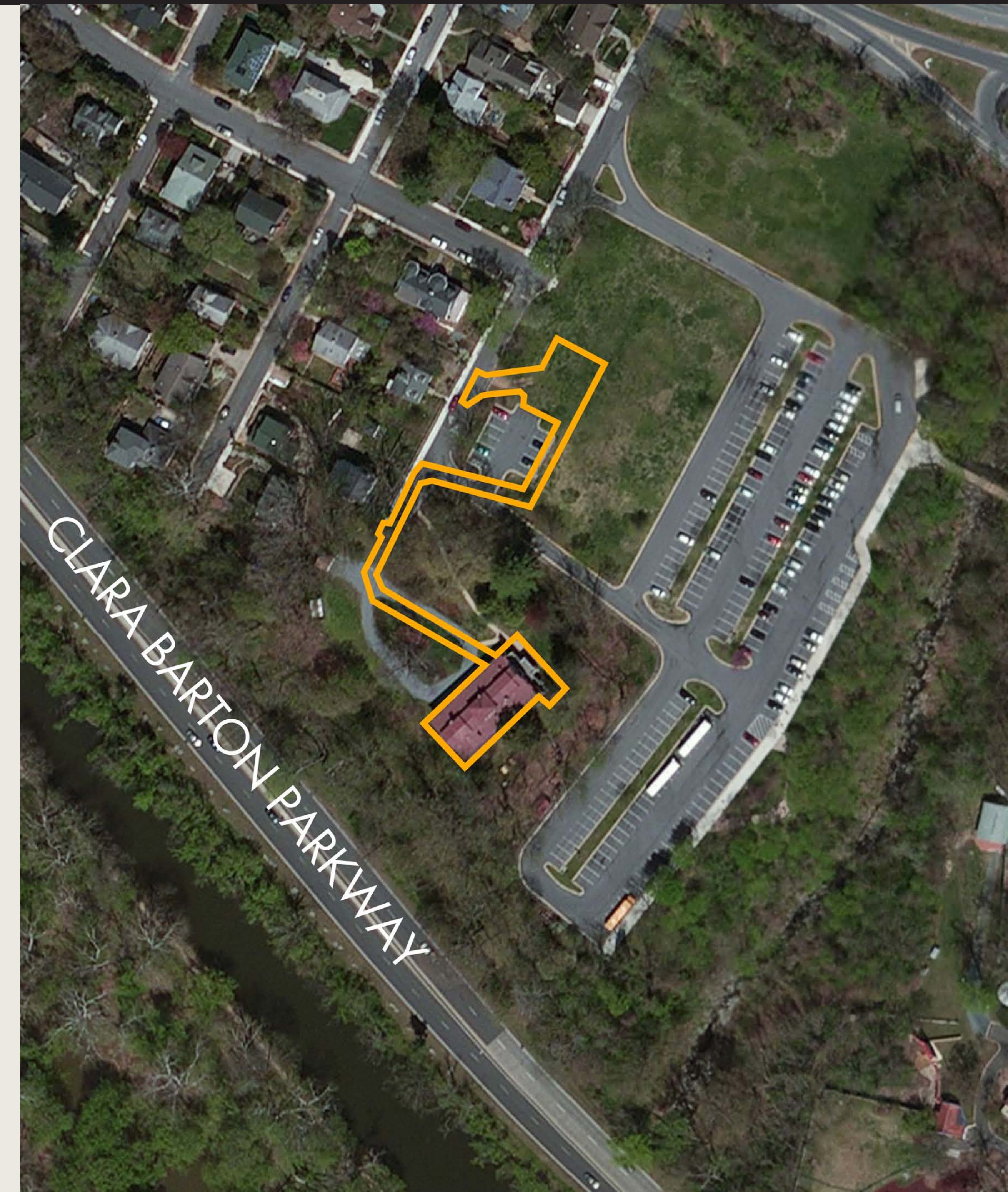
IF IT IS DETERMINED THE PROPOSED ACTION COULD AFFECT HISTORIC PROPERTIES, SECTION 106 IS TRIGGERED. THE SECTION 106 TASK AND THE NEPA ASSESSMENT NEED TO BE CLOSELY COORDINATED.

Section 106 Process

- DEFINE UNDERTAKING / INITIATE SECTION 106
- IDENTIFY CONSULTING PARTIES
- PLAN TO INVOLVE THE PUBLIC
- DEFINE AREA OF POTENTIAL EFFECT (APE)
- IDENTIFY SIGNIFICANT CULTURAL RESOURCES IN APE
- ASSESS EFFECTS ON SIGNIFICANT RESOURCES
- APPLY CRITERIA OF ADVERSE EFFECT
- CONTINUE CONSULTATION
- DRAFT AGREEMENT DOCUMENT, IF NEEDED

Area of Potential Effect

ACCORDING TO 36 CFR 800.16(D), THE **AREA OF POTENTIAL EFFECT (APE)** IS THE GEOGRAPHIC AREA OR AREAS WITHIN WHICH AN UNDERTAKING MAY DIRECTLY OR INDIRECTLY CAUSE CHANGES IN THE CHARACTER OR USE OF HISTORIC PROPERTIES, IF SUCH PROPERTIES EXIST. THE AREA OF POTENTIAL EFFECTS IS INFLUENCED BY THE SCALE AND NATURE OF THE UNDERTAKING AND MAY BE DIFFERENT FOR DIFFERENT KINDS OF EFFECTS CAUSED BY THE UNDERTAKING.

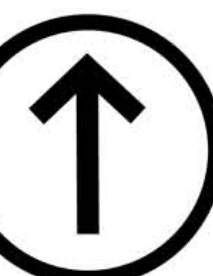


LEGEND



Proposed draft APE

NORTH



Clara Barton House Rehabilitation Project

Options for Public Comment

U.S. Department of the Interior
National Park Service



How to Provide Comments Tonight:

COMPLETE THE COMMENT FORM AND LEAVE IT WITH US BEFORE YOU GO OR RETURN IT TO US BY MAIL. (COMMENT FORM IS PRE-ADDRESSED)

WRITE YOUR COMMENTS ON THE FLIP CHARTS AT THE COMMENT STATIONS.

BEFORE INCLUDING YOUR ADDRESS, PHONE NUMBER, E-MAIL ADDRESS, OR OTHER PERSONAL IDENTIFYING INFORMATION IN YOUR COMMENT, YOU SHOULD BE AWARE THAT YOUR ENTIRE COMMENT – INCLUDING YOUR PERSONAL IDENTIFYING INFORMATION – MAY BE MADE PUBLICLY AVAILABLE AT ANY TIME. WHILE YOU CAN ASK US IN YOUR COMMENT TO WITHHOLD YOUR PERSONAL IDENTIFYING INFORMATION FROM PUBLIC REVIEW, WE CANNOT GUARANTEE THAT WE WILL BE ABLE TO DO SO.

How to Provide Comments Throughout the Public Scoping Period:

WRITE YOUR COMMENTS AT THE PROJECT WEBSITE, AT:

<http://parkplanning.nps.gov/gwmp>

MAIL OR HAND-DELIVER COMMENTS TO:

ATTN: CLARA BARTON HOUSE REHABILITATION PROJECT
GEORGE WASHINGTON MEMORIAL PARKWAY
700 GEORGE WASHINGTON MEMORIAL PARKWAY MCLEAN, VA
22101-1717

PLEASE NOTE: COMMENTS WILL NOT BE ACCEPTED BY FAX, E-MAIL, OR IN ANY OTHER WAY THAN THOSE SPECIFIED ABOVE.

*Please submit all comments prior to
December 20, 2013.*

Clara Barton House Rehabilitation Project

Proposed Actions



What is currently there?

THE CLARA BARTON HOUSE CURRENTLY DOES NOT HAVE A FIRE SUPPRESSION SYSTEM TO PROTECT THE HISTORIC STRUCTURE, HISTORIC FURNISHINGS, AND MUSEUM COLLECTIONS FROM DAMAGE OR LOSS BY FIRE. THE EXISTING HEATING SYSTEM IS INADEQUATE AND AT THE END OF ITS LIFE CYCLE. FINALLY, THE LOW-PITCHED STANDING SEAM METAL ROOFS HAVE EXPERIENCED FREQUENT FAILURES FROM SEASONAL EXPANSION/CONTRACTION DUE TO LACK OF EXPANSION JOINTS CAUSING DAMAGE TO THE INTERIOR CEILINGS AND WALLS.

What is being proposed?

THE NATIONAL PARK SERVICE IS PREPARING AN ENVIRONMENTAL ASSESSMENT IN ACCORDANCE WITH THE NATIONAL ENVIRONMENTAL POLICY ACT OF 1969 (NEPA) FOR THE:

- INSTALLATION OF A NEW FIRE SUPPRESSION SYSTEM,
- THE CONSTRUCTION OF A CLIMATE MANAGEMENT SYSTEM, AND
- REHABILITATION OF A FAILING METAL ROOF AT THE CLARA BARTON NATIONAL HISTORIC SITE IN GLEN ECHO, MARYLAND.



HISTORICALLY SIGNIFICANT CLERESTORY WINDOWS.



HISTORIC MUSLIN CEILINGS ARE PRESENT THROUGHOUT THE HOUSE.



LOW SLOPED METAL ROOF SEGMENTS WITH GUTTER TAPE ON THE EDGES.