

## **Bighorn Canyon National Recreation Area**

### **Superintendents Compendium Public Comments Sought**

Bighorn Canyon NRA is soliciting public comment for the Superintendent's Compendium. The Compendium is reviewed annually each year.

The rules and regulations that the National Park Service enforces in all National Parks come from Title 36 Code of Federal Regulations. Title 36 allows the Superintendent to enact certain rules to allow or restrict activities. Many of the Compendiums regulations complement existing State a local laws or regulations currently in effect in the park. The Compendium does; nor cannot, replace or repeal and state or federal laws.

Those who wish to comment on the 2014 Superintendents Compendium may enter comments online at the National Park Service website Planning, Environmental and Public Comment Site (<http://parkplanning.nps.gov>) or may mail comments to Kevin Tillman, Chief Ranger at Bighorn Canyon NRA, P.O. Box 7458, Fort Smith, MT 59035 or email comments to [Kevin-Tillman@nps.gov](mailto:Kevin-Tillman@nps.gov).

The 2014 Superintendents Compendium will be on public review for 30 days ending December 27, 2013. Names and address of people who comment become part of the public record. National Park Service personnel will make all submissions from organizations, business, and from individuals identifying themselves representatives or officials of organizations or business available for public inspection in their entirety. Those who with the NPS to withhold their name and/or address must state this at the beginning of the comment.



UNITED STATES DEPARTMENT OF THE INTERIOR

NATIONAL PARK SERVICE

## **BIGHORN CANYON NATIONAL RECREATION AREA**

COMPENDIUM: 36 CFR 1.7(b)

DESIGNATIONS, CLOSURES, PERMIT REQUIREMENTS AND OTHER RESTRICTIONS  
IMPOSED UNDER THE DISCRETIONARY AUTHORITY OF THE SUPERINTENDENT—TITLE 36,  
CODE OF FEDERAL REGULATIONS, CHAPTER I.

In accordance with the delegated authority contained within the regulations in Title 36, Code of Federal Regulations, Chapter I, Parts 1 through 7, as authorized by Title 16, United States Code, Sections 1 and 3, the following regulatory provisions are established for Bighorn Canyon National Recreation Area. These regulatory provisions are enforceable and are an addition to the regulations contained in Title 36, Code of Federal Regulations, Chapter I.

Approved by: \_\_\_\_\_,  
Superintendent

Date: \_\_\_\_\_

Visitors may obtain additional information or permit applications by contacting the Office of the Superintendent, Bighorn Canyon National Recreation Area, P.O. Box 7458, Fort Smith, MT 59035. You may also check out our website at <http://www.nps.gov/bica>.

A copy of this compendium is available for public review at the following locations:

North District Ranger Office – Bighorn Canyon National Recreation Area  
5 Avenue B, Fort Smith MT 59035

South District Ranger Office – Bighorn Canyon National Recreation Area  
20 Highway 14A East, Lovell WY 82431

## **INTRODUCTION:**

The Bighorn Canyon National Recreation Area Superintendent's Compendium is the summary of park specific rules implemented under the discretionary authority of the Park Superintendent. It serves as public notice with an opportunity for public comment, identifies areas closed for public use, provides a list of activities requiring either a special use permit or reservation, and elaborates on those public use and resource protection regulations that pertain to the specific administration of the park. Regulations found in 36 Code of Federal Regulations (CFR) and other United States Codes (U.S.C.) and CFR Titles which are enforced without further elaboration at the park level.

A copy of 36 CFR can be purchased from the U.S. Government Printing Office at: Superintendent of Documents

P.O. Box 371954

Pittsburgh, PA 15250-7954

Or by calling: (202) 512-1800

The Code of Federal Regulations is also available on the internet at:

<http://www.gpoaccess.gov/cfr/index.htm>

The regulations contained in this Compendium apply to all persons entering, using, visiting or otherwise within the boundaries of federally owned lands and waters administered by the NPS as part of the Bighorn Canyon National Recreation Area. This includes all water subject to the jurisdiction of the United States, including all navigable waters and areas within their ordinary reach (up to the ordinary high water mark) without regard to the ownership of the submerged lands or lowlands.

Only NPS Law Enforcement Park Rangers can enforce the requirements of the United States Code, CFR Titles, and this Superintendent's Compendium. However, many Federal laws and regulations have similar statutes found in State and local law.

Many of the requirements of this Compendium complement existing State and local law and regulations which are also in effect within the park, and are enforced by State, and local law enforcement officers. However, if a state or local law is currently enacted, this Compendium does not replace or repeal that law.

A person who violates any provision of the regulations found in 36 CFR Parts 1-7, along with this compendium, is subject to a fine as provided by law (18 U.S.C. 3571) up to \$5,000 for individuals and \$10,000 for organizations, or by imprisonment not exceeding six months (18 U.S.C. 3559), or both, and shall be adjudged to pay all court costs associated with any court proceedings.

The Compendium is reviewed annually each year and the park welcomes comments about its programs and activities at any time. Comments specific to the Superintendent's Compendium will be accepted any time. Any changes to this Compendium recommended by the public or others, and accepted by the Superintendent, will be incorporated into this compendium without further public comment and review and will be included in the next years Compendium. Comments can be directed to either the park Superintendent or the Chief Rangers Office at;

Bighorn Canyon National Recreation Area

5 Avenue B

P.O. Box 7548

Fort Smith, Montana 59035

Some of the terms used in this Compendium may be unclear to you. If you are unsure about a specific term please consult 36 CFR sec. 1.4 Definitions. You may access them at:

<http://www.gpo.gov/fdsys/pkg/CFR-2011-title36-vol11-1pdf/CFR-2011-title36-vol11-part1.pdf>. Terms that may be unique to this Compendium are defined in this document.

Copies of the Compendium are available online at:  
<http://www.nps.gov/bica/parkmgmtlawsandpolicies.htm>. Hard copies are also maintained at the Lovell Visitor Center and Park Headquarters in Fort Smith.

DRAFT

## **DEFINITIONS:**

*Administrative Roads and Areas:* Areas closed to the public, but necessary for government vehicles, equipment and personnel to access in order to maintain park facilities and infrastructure.

*Backcountry Camping:* Camping outside of a designated camping area and at least one half mile distant from a developed area. Backcountry camping is allowed with permission of the Superintendent.

*Camping:* Erecting of a tent shelter of natural or synthetic material; preparing a sleeping bag or other bedding material for use, parking of a motor vehicle, motor home or trailer or mooring of a vessel for the apparent purpose of overnight occupancy.

*Developed Area:* means an area with roads, marinas, docks, parking areas, picnic areas, campgrounds, or other structures, facilities or lands located within development and historic zones depicted on the park area land management and use map.

*Dock:* Any floating platform, fixed platform, or vessel, which is anchored or otherwise installed for the primary purpose of providing a location for vessel moorage. This applies to all such platforms or vessels, regardless of whether they are equipped with motors/propulsion devices, Hull Identification Numbers, US Coast Guard capacity plates, or whether they are registered as a vessel by a federal or state government agency.

*Flat wake speed* means the minimum required speed to leave a flat wave disturbance close astern a moving vessel yet maintain steerageway, but in no case in excess of 5 statute miles per hour.

*Firearm* means a loaded or unloaded pistol, rifle, shotgun or other weapon which is designed to, or may be readily converted to; expel a projectile by the ignition of a propellant.

*Hunting:* means taking or attempting to take wildlife, except trapping.

*Picnic Areas:* Those areas designated as day-use public areas that include picnic tables, NPS established metal campfire grates or above ground barbecue grates.

*Swim beach and Swim Area:* Those areas of Bighorn Canyon NRA designated by signs, buoys, log booms or other physical barriers as being closed to rigid devices including surfboards, the possession of glass containers, pets, and the lighting or maintaining of a fire.

### **Section 1.5 Closures and Public Use Limits**

(a)(1) The following roads and/or areas are closed to non-official vehicles:

- All administrative, Western Area Power Authority or roads and parking areas not identified by designated signs, maps, newspaper publication, or other appropriate methods such as electronic media, park brochures, and handouts in accordance with 36 CFR §1.7.
- Areas around all potable water system tanks and developed springs.
- All fenced sewage lagoons.
- Areas between fences and cliff faces at Ok-A-Beh, Devil's Canyon Overlook and Barry's Landing and Trail Creek.
- Electrical switchyards and their entranceways.
- Concession docks are closed excepting lessees, their guests and customers.

**Determination:** Concession docks and slips are rented to park visitors on an annual basis. Allowing other boats to moor for extended periods of time takes potential business from the contracted Concessioner and creates conflicts with those who have rented the docking spaces.

- Docking limit is fifteen (15) minutes at the public boat docks and fifteen (15) minutes at the floating comfort stations (official and concession vessels excepted). Overnight docking or mooring at Box Canyon, Black Canyon, and Dayboard Nine public boat docks is permitted on a first come/first serve basis.
- Bighorn Lake from the base of the Yellowtail Dam up stream to the orange log boom is closed to the general public.
- Om-Ne-A Trail is closed to the general public.
- Yellowtail Dam is closed to the general public.
- Afterbay Lake is closed between dam intake works and buoyed cable line 100 feet west.
- Afterbay Lake is closed between orange log boom and Yellowtail Dam, 3,500 feet up stream.

**Determination:** These areas are close for security of the Yellowtail Dam and Visitor Safety. The purpose of this closure is to prevent unauthorized access and protection of Bureau of Reclamation property, critical infrastructure, and facilities.

### **Section 1.6 Permits**

(f)(1) A compilation of those activities requiring a permit shall be maintained by the Superintendent and available to the public upon request. Special Use Permits and Commercial Use Authorizations are requested through the Chief Rangers Office; Fort Smith, Montana. Research Permits may be requested through the Chief of Resource Management, Lovell Visitor Center, Lovell, WY

The following activities require permits:

- 36 CFR 2.5 Research Permits (includes specimen collection)

Special Use Permits:

- 36 CFR 2.38 (b) Use or Possession of fireworks
- 36 CFR 2.50 (a) Conduct a sports event, pageant, regatta, public spectator attraction, entertainment, ceremony, and similar events
- 36 CFR 2.51 (b) Public Assemblies: Demonstrations of 25 persons or less do not require a permit.
- 36 CFR 2.52 (a) Sale and Distribution of Printed Material
- 36 CFR 2.60 Livestock Trailing Operations
- 36 CFR 2.62 (b) Scattering of Human Ashes from Cremation

Commercial Use Authorization:

- 36 CFR 2.60 Commercial Livestock Trailing Operations
- 36 CFR 5.1 Displaying, posting, or distributing commercial notices or advertisements
- 36 CFR 5.3 Engaging in or soliciting any business
- 36 CFR 5.5(a) Commercial filming of motion pictures or television with professional casts, settings, or crews except bona fide newsreel or news television
- 36 CFR 5.5(b) Still photography of vehicles or other articles of commerce or models for the purpose of commercial advertising
- 36 CFR 5.6(c) Use of commercial vehicles on park area roads to access adjacent private lands
- 36 CFR 5.7 Constructing or attempting to construct any building, structure, dock, road, trail, path, or public or private utility upon, across, over, through, or under any park area

### **Section 2.1 Preservation of Natural, Cultural and Archaeological Resources**

- (a)(4) Driftwood within and around Bighorn Lake, and driftwood piles at Ok-A-Beh, Horseshoe Bend, and Barry's Landing may be gathered, used and/or removed from the park for personal use only. Dead and downed wood at campground areas and within the Yellowtail Wildlife Habitat Area may be collected for immediate on-site use only. Off road travel is not permitted for this purpose. Commercial use is prohibited.
- (c)(1) Edible fruits, nuts, vegetable food stuffs, and berries may be gathered and removed from the park for personal consumption. Off road travel is not permitted for this purpose. Commercial use is prohibited.

**Determination:** The gathering and removal of driftwood removes fuels that could contribute to later wildfires. During periods of high lake levels, driftwood creates hazards to navigation at marina locations, and is too dangerous to burn without controlled prescription fire methods.

### **Section 2.2 Wildlife Protection**

- (b)(1) In accordance with the enabling legislation establishing Bighorn Canyon National Recreation Area, hunting is allowed as specified in Title 16 of the United States Code section 460t-3, i.e., 16 USC § 460t-3.

- (b)(1) Hunting within one half mile of any developed area; including but not limited to, the Government Camp, Afterbay Contact Station, and Crooked Creek Contact Station of the park is prohibited.

**Determination:** Visitors enter and exit Bighorn Canyon National Recreation Area near these developed areas. Visitors routinely enter and leave the contact stations, hunting in close proximity to these areas can result in damage to government property. Residences and business offices are located around the Government Camp area. The ½ mile closure around these areas is necessary to achieve public safety and minimize public use conflicts. Unless specified; Bighorn Canyon NRA remains open to hunting and adopts all non-conflicting Montana and Wyoming State hunting regulations as approved.

**Exemption:** Upland bird hunting is allowed at the 3-Mile Access area, one half mile away from the access parking lot, during the specific times and seasons found in the Montana Upland Game Bird Regulations.

**Exemption:** The use of hounds in pursuit of mountain lions is regulated by State and Federal laws, and hunters are encouraged to contact the appropriate State agency prior to going afield.

- (e) Bighorn Canyon NRA is closed to spotlighting or any use of an artificial light for the purposes of wildlife viewing.

### **Section 2.3 Fishing**

- (a) Fishing from Afterbay Dam, to include the fenced areas on the west side of the dam, is prohibited.
- (a) Bow Fishing on the Afterbay Lake is prohibited.
- (d)(8) Fishing from public or concession boat docks or designated swimming beaches in the park is prohibited.

**Determination:** Montana state law allows bow fishing for non-game fish on waters that are open to angling for Non-Game Fish; however, Afterbay Lake is within a ½ mile of developed areas. The ½ mile closure around these areas is necessary to achieve public safety and minimize public use conflicts

### **Section 2.4 Weapons, Traps and Nets**

(a)(2)(ii) Target practice is only allowed at the Fort Smith Firing Range.

- Alcohol, possession of alcohol, or being under the influence of alcohol is prohibited

**Determination:** The Forts Smith Firing Range is open to the public. However, it is subject to closure for law enforcement weapons training and qualifications. Prohibiting alcohol is necessary to prevent unintentional weapons discharges, accidents or death.

### **Section 2.10 Camping and Food Storage**

- (a)(1) Designated Camping Areas:
- Dayboard Nine, Black Canyon and Medicine Creek Campgrounds, Barry's Landing – tents only
  - Afterbay Campground North & South, Horseshoe Bend Campground – tents or RVs



- Trail Creek Campground – tents or hard-sided camping trailers; in designated areas only, with self-contained black and gray water only
- The following Parking Areas are restricted to one available parking space: Afterbay Boat Ramp, Barry’s Landing (gravel area only), and North Kane Access, Horseshoe Bend, and Ok-A-Beh upper parking lot- hard-sided camping trailers with self contained black and gray water only.
- Camping/Parking on the Ok-A-Beh Helipad is prohibited.

**Determination:** There are limited locations and opportunities for camping within the Bighorn Canyon. Trailer parking in marina locations are limited and cause conflicts with camping and parking requirements. Space limits are intended to prevent conflicts between trailer parking and camping.

- (a)(2) Common Corrals-The area just east are designated camping areas for persons with livestock. Other campers may be allowed, if not in use by visitors with livestock, but must give way if visitors with livestock arrive later.
- (a)(3) Backcountry Camping is allowed below the high water mark of 3640 feet elevation or along underdeveloped areas of Bighorn Lake.
- (b)(9) Camping is limited to a maximum of 30 days per calendar year per person. No more than 14 consecutive days may be spent at any one campground between May 15 and October 15 each year. Campers or tents may not be left unattended for more than 24 hours.
- (d)(1) All food and coolers must be kept in a vehicle, vessel, hard-sided camping unit or, where available, park-provided bear-proof storage boxes, when not in use (Horseshoe Bend excepted).

**Determination:** Animals are attracted to food that is not secured. Securing food minimizes human versus wildlife conflicts and protects wildlife. Food Storage boxes are provided at campgrounds for visitor use.

**Section 2.13 Fires**

- (a)(1) Fires in developed areas must be contained within park-established fire rings, portable stoves, or grills.
  - Campfires are permitted in conjunction with backcountry camping and within the Yellowtail Wildlife Habitat Management Unit.
  - Fires are permitted along the Bighorn Lake shoreline below the high-water mark.
- (a)(2) Fires are not permitted in the Ok-A-Beh, Afterbay, Horseshoe Bend, North Kane, and Barry’s Landing parking lots.
- (c) During periods of high fire danger, the superintendent may close all or a portion of a park area to the lighting or maintaining of a fire.

**Determination:** During extreme fire danger or by order of the Superintendent, fires of any type may not be allowed. Visitors may contact the Recreation Area Headquarters Office at (406) 666-3300, Lovell Visitor Center at 307-254-0344, or the park website at [www.nps.gov/bica](http://www.nps.gov/bica) to check on current conditions. Two states, two counties, and the exterior boundary of Crow Tribe Reservation adjoin Bighorn Canyon

NRA, and there may be different fire restrictions in each area. To reduce confusion, Bighorn Canyon NRA will either be completely open to certain types of fires, or completely closed them.

Past events have demonstrated that Bighorn Canyon NRA has experienced periods of high fire danger, which require aggressive fire management. The purposes of these restrictions are to reduce the possibility of an uncontrolled wildfire, and are in effect to protect the natural and cultural resources of the park, and ensure the safety of park visitors and park facilities.

### **Section 2.15 Pets**

- (a) Dogs are allowed in all areas of the park to include developed and back country areas with the exception of (a) (1) and the restrictions of (a) (2) below.
- (a)(1) Pets are not allowed at the Horseshoe Bend Swim Beach Area which includes the sand, water, and grassy picnic area directly up from the beach. The Lake within the Red Hills day use area is open to dogs recreating in the water while under physical control of their owner.
- (a)(2) Pets must be crated, caged, or restrained on a leash which shall not exceed six feet in length in developed and back-country areas of the recreation area except as noted in (e) below.
- (a)(5) In developed areas, pet excrement must be immediately collected and disposed of in a trash receptacle.
- (b) Dogs may be off leash when being used in support of hunting activities or permitted stock trailing operations; contained on a vessel or within a vehicle; or in open water as designated and in accordance with applicable Federal and State law.
- (e) Pets may be under verbal control (e.g., call once and the pet comes) within areas jointly used by the National Park Service and the Bureau of Reclamation including Fort Smith Government Camp, Headquarters area, Grapevine road and the gravel pit area.

**Determination:** These restrictions are necessary to provide for the protection of Recreation Area resources, wildlife and public safety. While visiting the Recreation Area with pets can be a positive pet owner experience, pets have been shown to have negative impacts on park resources, wildlife, and visitors. These impacts include, but are not limited to, noise, pursuit, harassment, defecation, and scent marking of wildlife habitat. In those cases where a pet facilitates access (e.g. service animals or in support of legal hunting activities) the use of such pets is allowed.

### **Section 2.16 Horses and Pack Animals**

- (g)(1) Pack animals are prohibited in designated camping areas and historic ranches, except in the Common Corrals and associated camping area.
- (g)(2) The feeding or dropping of forage in park areas, except for palletized feed or certified weed and seed-free hay, straw, whole grains or cubed products is prohibited.
- (g)(3) All livestock entering or leaving the recreation area must meet state requirements regarding health certificates and brand inspections.

**Determination:** the Superintendent of Bighorn Canyon NRA has determined these are the minimum necessary restrictions to provide for the protection of the park resources. Resource Management at

Bighorn Canyon includes an aggressive invasive weed program that is consistent with existing state and federal programs to minimize the spread of exotic invasive species.

### **Section 2.22 – Property**

(a)(2) Vehicles and/or boat trailers may be parked unattended at boat launch parking facilities for the duration of overnight camping trips for visitors that are camping at boat-in campgrounds, and camping in adjacent fee campgrounds within the established camping limits.

- Vehicles and/or boat trailers left unattended for more than seven consecutive days, will be impounded
- Visitors not camping must remove their vehicle and/or trailer after daily trips.

**Determination:** Unattended property is inconsistent with the orderly management of park areas and may limit equitable use of park facilities. Property left unattended in excess of 24 hours may be impounded

### **Section 2.51 Public Assemblies, Meetings**

The following are designated public meeting or assembly areas. Public meetings or assemblies cannot interfere with foot traffic or block any public entrances. Detailed maps of specific areas will be furnished upon request. See Appendix A

- MK Hill Picnic Area, Fort Smith Montana.
- Afterbay Contact Station 100 feet north of the building.
- Cal Taggart Visitor Center 100 feet North East of the building.
- Horseshoe Bend Marina west of the Fish Cleaning Station.

### **Section 2.52 Sale or Distribution of Printed Matter**

The following areas are designated as acceptable for the sale or distribution of printed matter. Sale or distribution areas may not interfere with foot traffic or block any public entrance. Detailed maps of specific areas will be furnished upon request. See Appendix B.

- MK Hill Picnic Area, Fort Smith Montana.
- Afterbay Contact Station 100 feet north of the building.
- Cal Taggart Visitor Center 100 feet North East of the building.
- Horseshoe Bend Marina west of the Fish Cleaning Station.

### **Section 3.2 Boating and Water Use Activities**

All operators and riders must follow applicable state boating regulations regarding personal watercraft.

**Montana requires:**

- All operators and riders to wear U.S. Coast Guard approved personal flotation devices (PFD).
- If the personal watercraft is equipped with a lanyard-type cord that shuts off the engine when the operator falls off the craft, the lanyard must be attached to the operator's wrist or personal flotation device.
- A "flat wake" or "no wake" speed must be maintained when within 200 feet of a dock, swimmer, swimming raft, non-motorized boat or anchored vessel.
- Children 12 years old or younger may not operate a motorboat or a personal watercraft powered by a motor rated at more than 10 horsepower unless accompanied by someone 18 years of age or older. Youths 13 and 14 years of age may not operate those vessels without completing an approved water safety course, or unless accompanied by someone 18 years of age or older.
- A person must be 18 years or older to rent a motorboat or personal watercraft powered by a motor rated at more than 10 horsepower.

**Wyoming requires:**

- No person operating a personal watercraft shall cross or jump the wake of another watercraft when within 100 feet of the watercraft creating the wake.
- No person shall operate a personal watercraft unless the watercraft is equipped by the manufacturer with a "kill switch." The kill switch shall be attached via a lanyard to the operator of the personal watercraft when it is underway in such a manner that in the event the operator is ejected from the personal watercraft the engine shall stop.
- All persons aboard personal watercraft shall wear a U.S. Coast Guard approved personal flotation device of a suitable size while engaged in such activity.

**Determination:** The Bighorn Canyon NRA lies between two states, Wyoming and Montana. The Recreation Area 36 CFR 3.2 allows for the adoption of Federal and state laws and regulations.

**Section 3.4 Vessel Inspections**

All vessels are required to stop at open Bighorn Canyon NRA; Aquatic Invasive Species (AIS) Check stations prior to launching for inspections. Vessels that have been used within 30 days in states with known occurrence of zebra or Quagga mussels will not be allowed on park waters until completing the prescribed abatement process. Operators of vehicles towing boat trailers will stop at all designated AIS boat inspection stations within the park before launching boats. Boat operators will perform AIS self inspection of their boat before launching in park waters if the inspection station is not open.

**Determination:** Currently the Bighorn Lake is free of zebra mussels. However, if zebra mussels were to infest the Lake, they will likely foul dock and ramp facilities, encrust boats, clog engines, and damage the quality of lake fishing by disrupting the food chain. In response to the continued and growing threat of the

introduction of Quagga and zebra mussels at Bighorn Canyon NRA AIS inspection requirements for Bighorn Lake boaters have been implemented.

These increased measures are intended to prevent the unintentional introduction of Quagga and zebra mussels into the waters of Bighorn Lake.

### **Section 3.8 Vessel Operations**

(a)(2) Afterbay Dam to cable 200 feet downstream is closed to boating.

(b)(2) Private vessels may not tie up to any park buoy not specifically designated as a mooring buoy at any time. Mooring buoys will be designated with a blue stripe.

- Private individuals are not allowed to place or install their own buoys in the park for mooring purposes.
- Private individuals are allowed to anchor in areas where they are not a hazard to navigation. Overnight anchoring of vessels is limited to a maximum of 30 days per calendar year.
- All vessels at anchor between sunset and sunrise must display anchor lights. If a vessel is less than 164 feet in length, then its anchor light will be an all-round light visible where it can best be seen from all directions.
- Private vessels aren't required to display an all round white light if they are renting dock space from a concession operator in the park.

**Determination:** Buoys are designed to mark locations of dock anchoring systems and as aids to navigation. Long term mooring can affect the integrity of the system and making them unusable for park visitors.

(b)(7) Teak Boarding on Bighorn Lake and Afterbay Lake are prohibited.

**Determination:** Teak boarding is inherently unsafe as it places the rider close to boat exhaust fumes. Riders have been injured or killed from Carbon Monoxide poisoning as a result of Teak Boarding.

### **Section 3.12 Vessel towing a person**

(a) Crooked Creek Bay is closed to towing of people.

### **Section 3.16 Swimming and Wading**

Afterbay Dam to cable 200 feet downstream is closed to wading.

Swimming from public, fishing or concession boat docks is prohibited

Swimming in the Ok-A-Beh, Horseshoe Bend and Barry's Landing boat launch areas is prohibited.

**Determination:** 200 feet downstream of the Afterbay dam has been determined as the minimum distance to maintain security and safety from unannounced water discharges. Swimming near boat docks and launch areas interferes with the ingress and egress of boats from the lake conflicting with visitor safety.

### **Section 3.17 Swimming and Bathing**

- (a)(2) Swimmers must obey restrictions as posted at designated swim beaches.
- (c) Glass containers of all types are prohibited next to water areas in the park; to include designated swim beaches.
- (c) Children three years of age and younger must be accompanied by an adult while in the water. Water flotation devices at designated swimming areas are restricted to children three years of age and younger to discourage reliance on flotation devices.

**Determination:** Restriction on glass containers is based on safety and environmental concerns to limit injuries associated with discarded or broken glass containers and protect park resources.

### **Section 4.22 Vehicle Safety**

- (b)(1) Operating a motorized vehicle(s) on frozen bodies of water in the park (to include Bighorn Lake) is prohibited with the exception of south of the “South Narrows” of Bighorn Lake (legal description R94W, T57N at the SE corner of Section 6, the SW corner of Section 5, the NE corner of Section 7, and the NW corner of Section 8

**UNITED STATES DEPARTMENT OF THE INTERIOR**

**NATIONAL PARK SERVICE**

**COMPENDIUM**

**APPENDIX A**

**DESIGNATED AREAS FOR PUBLIC ASSEMBLY**

Bighorn Canyon National Recreation Area

2014



Fish Cleaning Station

Public Use Area

Figure 1 Horseshoe Bend Public Assembly Area

DRAFT





Figure 2 Lovell Visitor Center Public Assembly Area

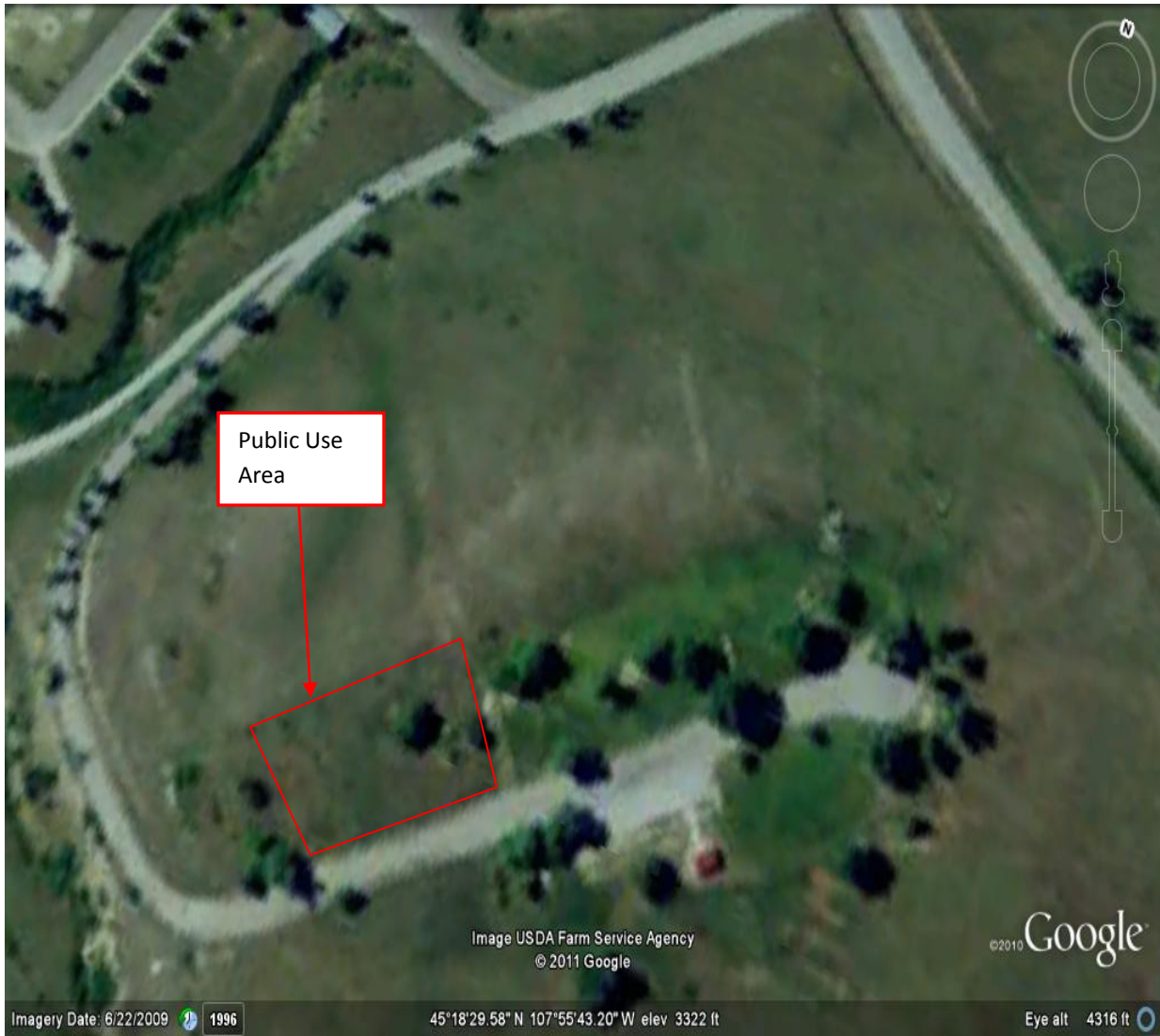


Figure 3 M K Hill Public Use Area



Public Use  
Area

Figure 4 Afterbay Public Assembly Area

**UNITED STATES DEPARTMENT OF THE INTERIOR**

**NATIONAL PARK SERVICE**

**COMPENDIUM**

**APPENDIX B**

**DESIGNATED AREAS FOR SALE OR DISTRIBUTION  
OF PRINTED MATERIAL**

Bighorn Canyon National Recreation Area

2014



Figure 5 Horseshoe Bend Sale and Printed Material Distribution Area



Figure 6 Lovell Visitor Center Sale and Printed Material Distribution Area

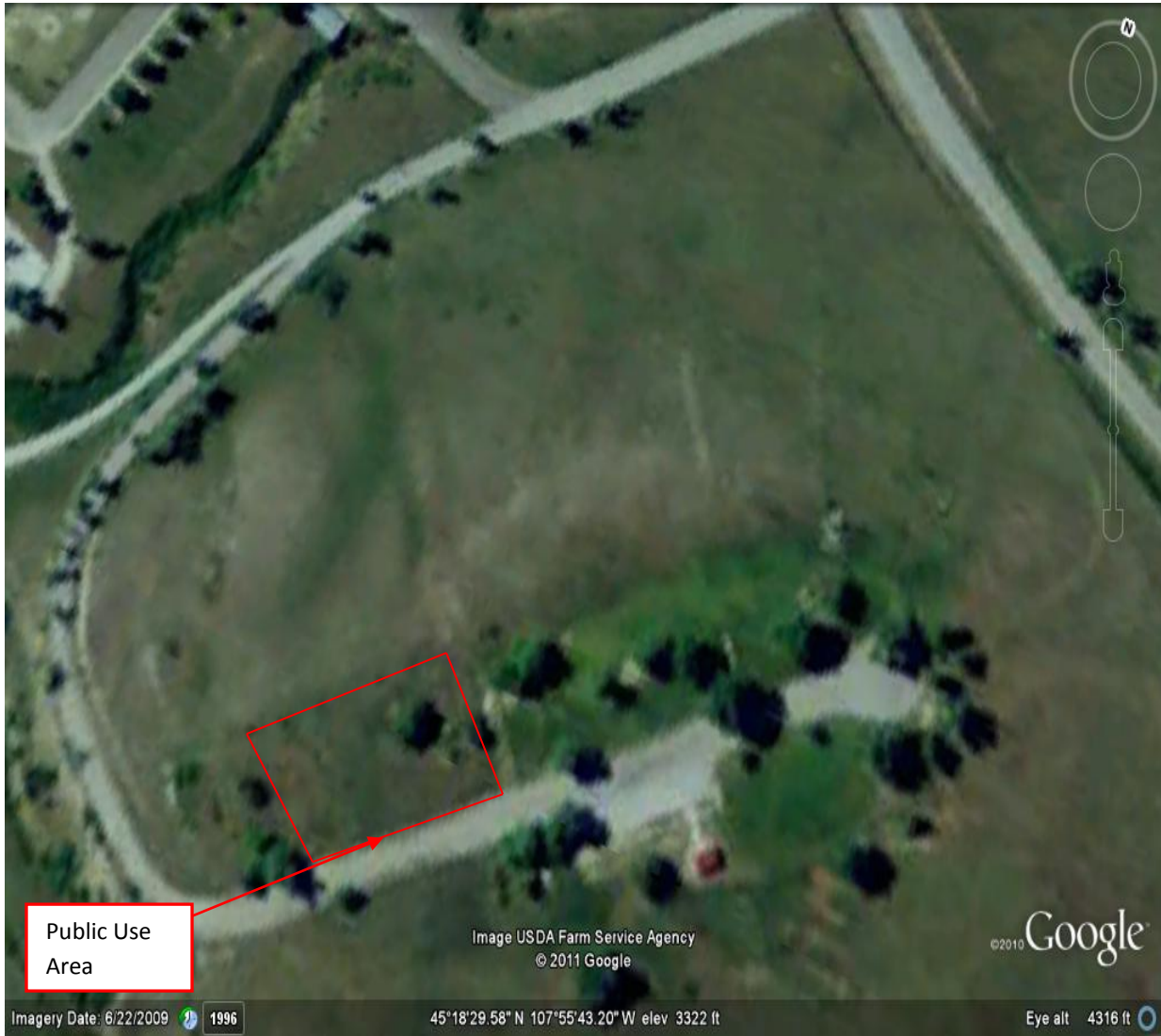


Figure 7 M K Hill Sale and Printed Material Distribution Area



Figure 8 Afterbay Sale and Printed Material Distribution Area