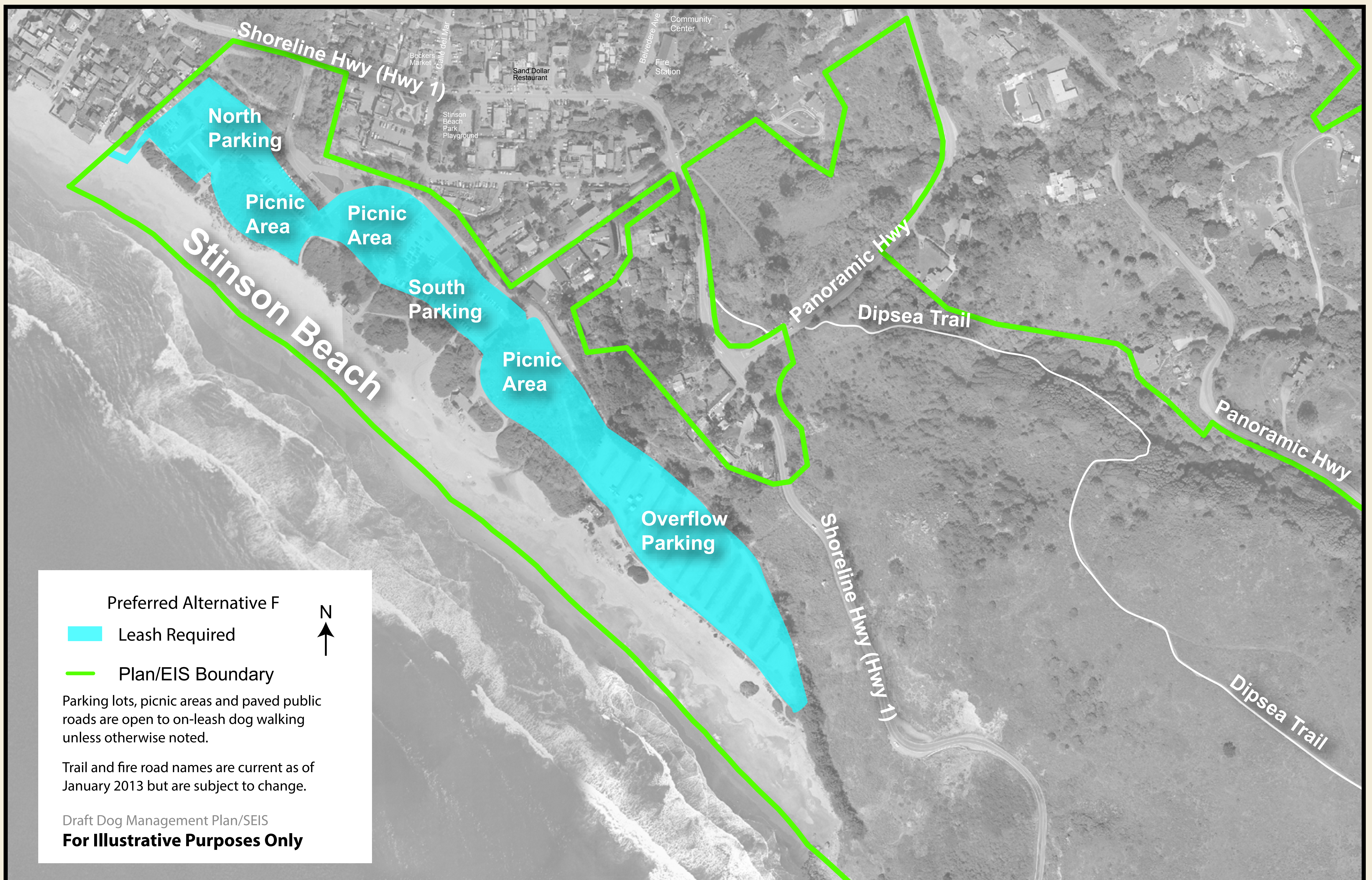




Stinson Beach



Preferred Alternative F:
Dog walking would be allowed on-leash in the parking lots and picnic areas and on a new path to Upton Beach from the north parking lot.



Alternative A: No Action
(36 CFR 2.15, 36 CFR 7.97 (d); 1979 Pet Policy; GGNRA Compendium)
Dog walking would continue to be allowed on-leash in the parking lots and picnic areas only.

Alternative B: NPS Leash Regulation
(36 CFR 2.15 and GGNRA Compendium)
Same as Alternative A.

Alternative C: Emphasis on Multiple Use Balanced by County
Same as Alternative A.

Alternative D: Most Protective Based on Resource Protection and Visitor Safety
Dog walking would not be allowed.

Alternative E: Most Dog Walking Access and Management Intensive
Same as Alternative A.