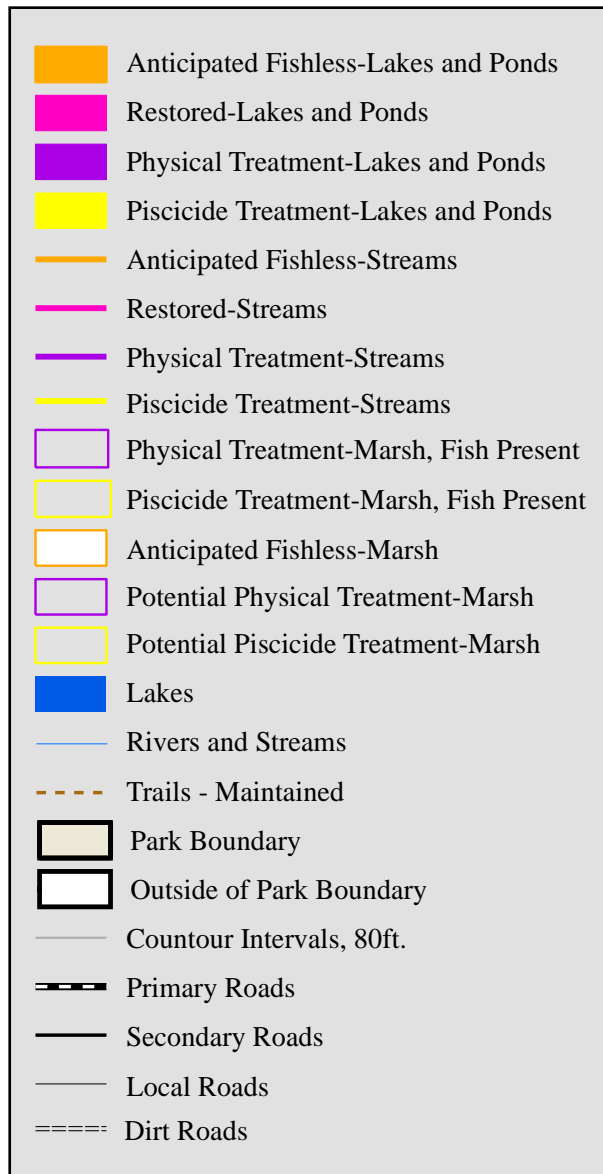
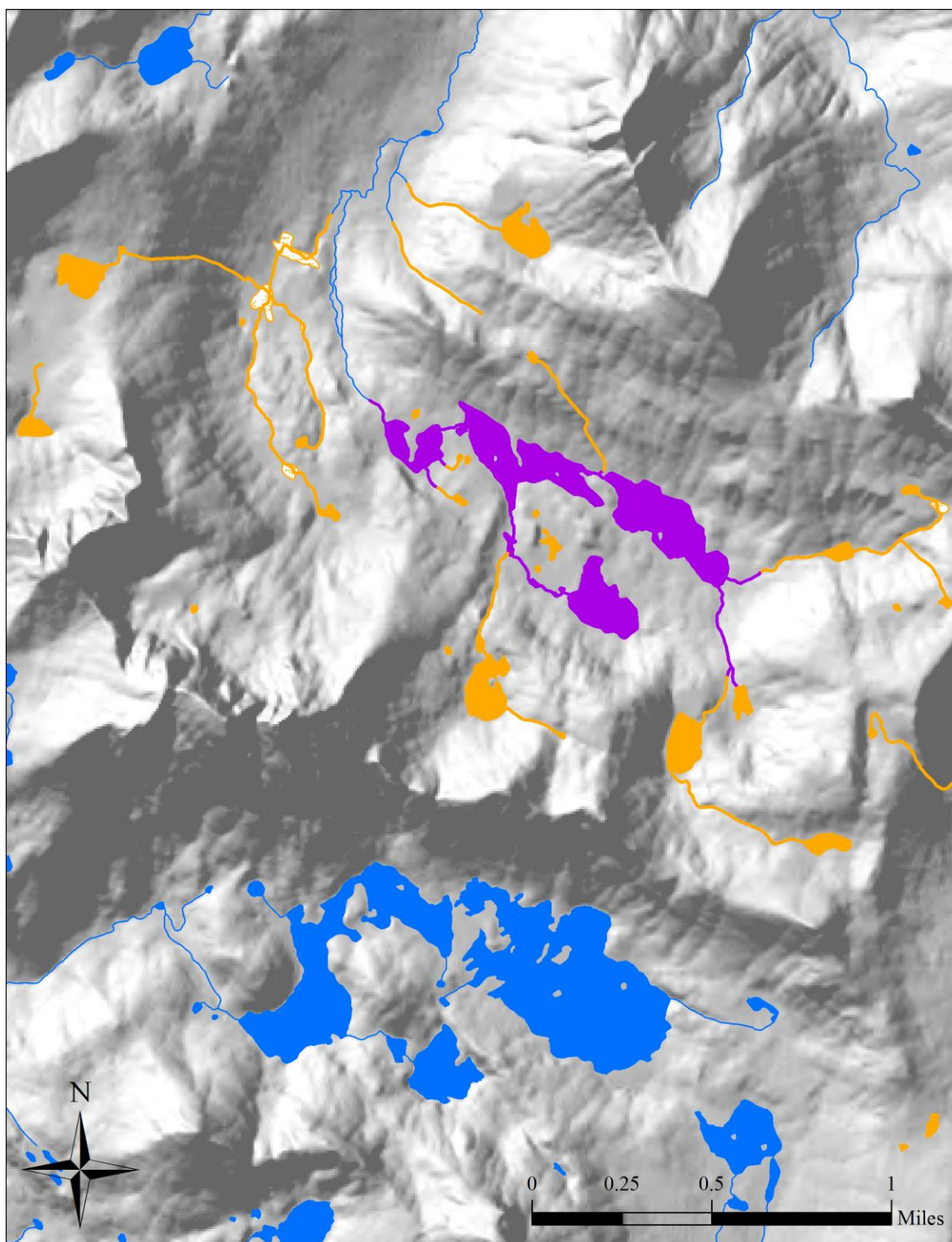


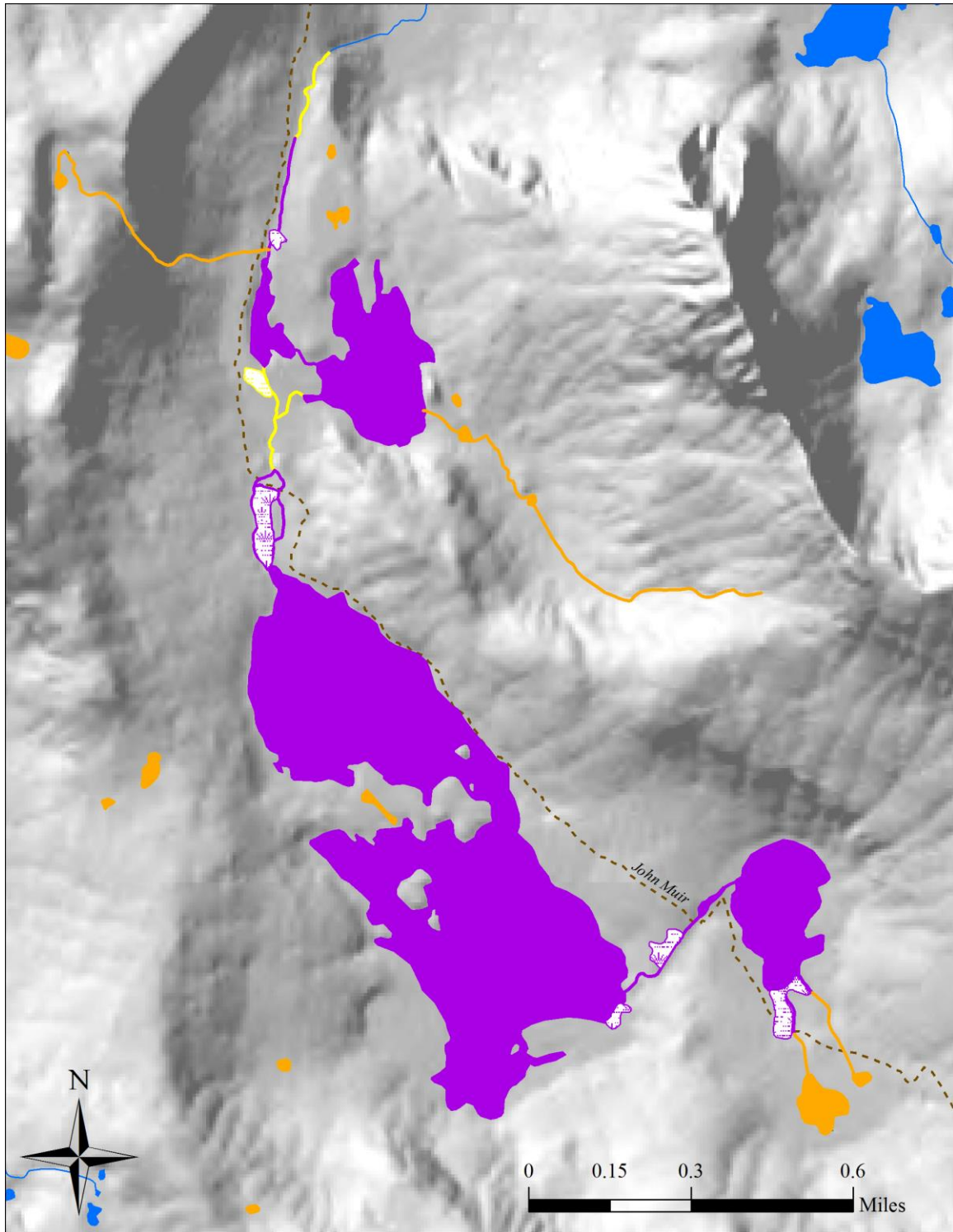
## APPENDIX B: INDIVIDUAL FISH ERADICATION BASIN MAPS

This appendix provides a detailed map for each of the 20 treatment basins included in Alternative B, plus restored basins (fish eradication completed or in-progress). Three basins (Amphitheater, Sixty Lake, and Upper Bubbs) contain waterbodies with fish eradication in-progress and additional waterbodies proposed for fish eradication. Alternative B includes 87 waterbodies proposed for fish eradication, which is the maximum number of waterbodies to be treated under any alternative in this plan. Each map shows the number and acreage of lakes and ponds, and miles of stream, to be restored per treatment method in that particular basin. Treatment methods include: 1) Restored (fish eradication waters completed or in-progress using physical treatment); 2) Physical (proposed fish eradication waters using physical treatment); and 3) Piscicide (proposed fish eradication waters using piscicide treatment). Basin maps are ordered from north, starting in Kings Canyon National Park, to south, ending in Sequoia National Park. The legend below describes the symbology used on each map.



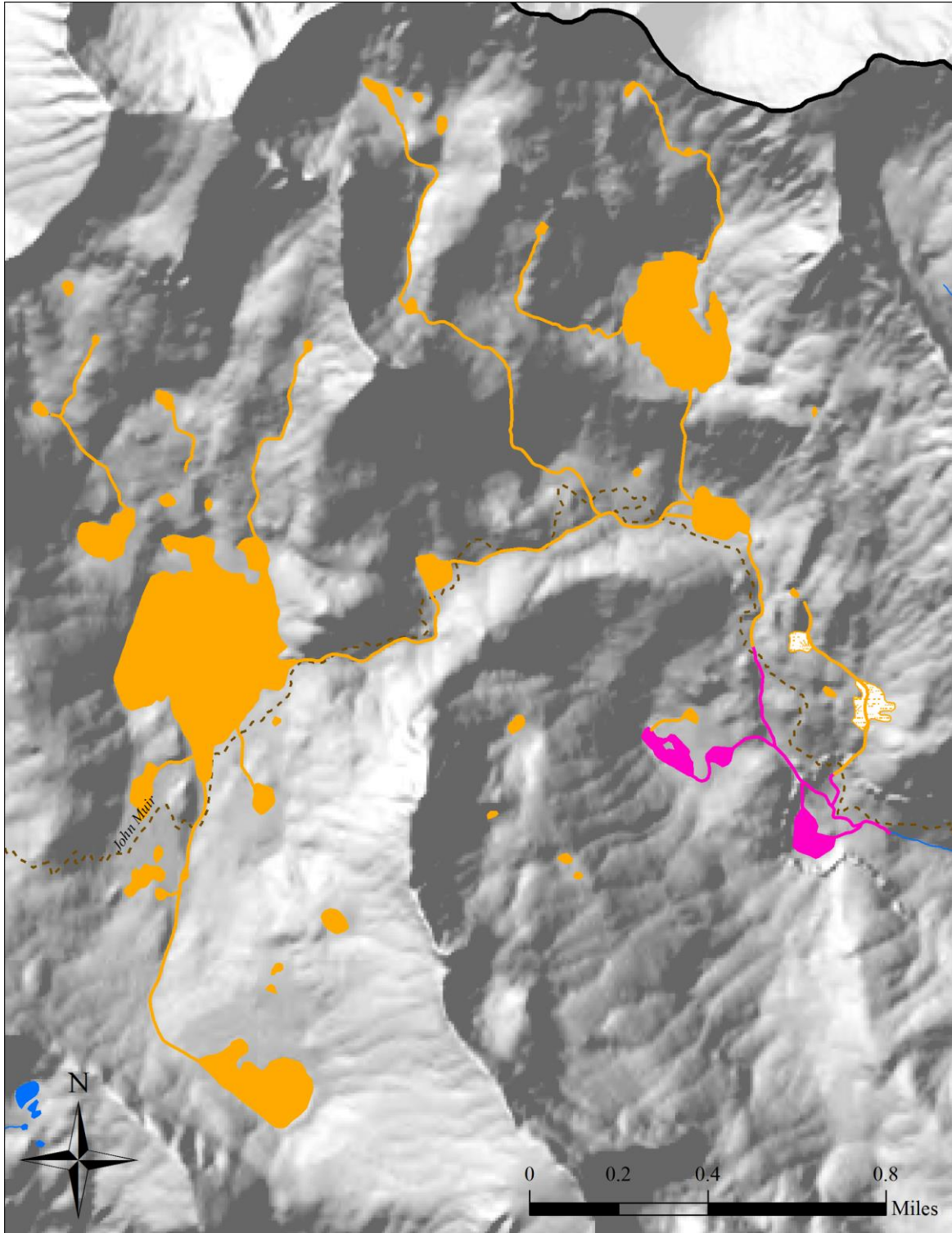


<i>McGee</i>					
Treatment	# Lakes	(ac.)	# Ponds	(ac.)	Stream (mi.)
physical	4	75.3	4	1.2	1.0
<b>Total</b>	<b>4</b>	<b>75.3</b>	<b>4</b>	<b>1.2</b>	<b>1.0</b>

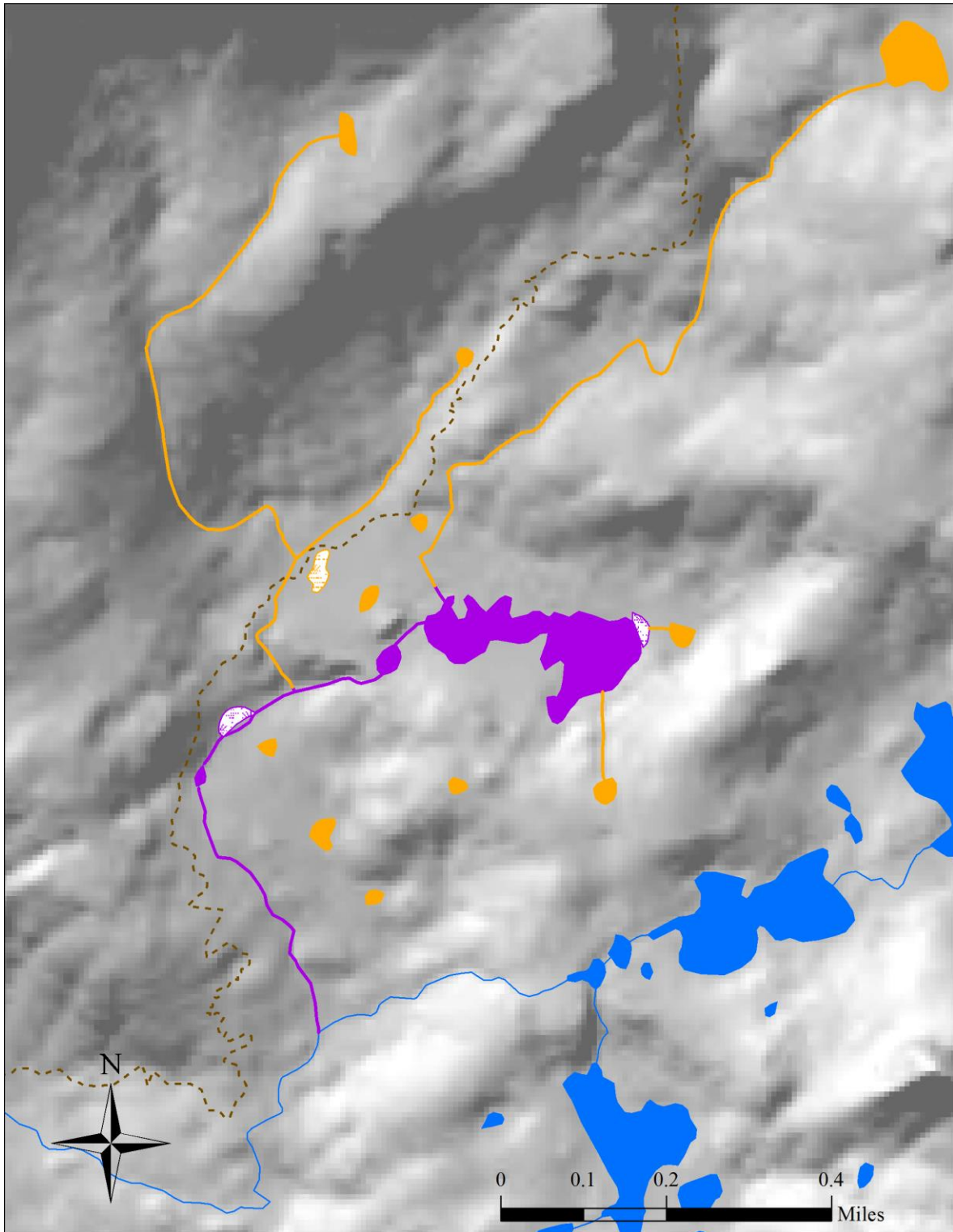


<i>Upper Evolution</i>					
<b>Treatment</b>	<b># Lakes</b>	<b>(ac.)</b>	<b># Ponds</b>	<b>(ac.)</b>	<b>Stream (mi.)</b>
physical	4	228.2	1	0.5	1.5
piscicide	0	0.0	0	0.0	0.7
<b>Total</b>	<b>4</b>	<b>228.2</b>	<b>1</b>	<b>0.5</b>	<b>2.2</b>

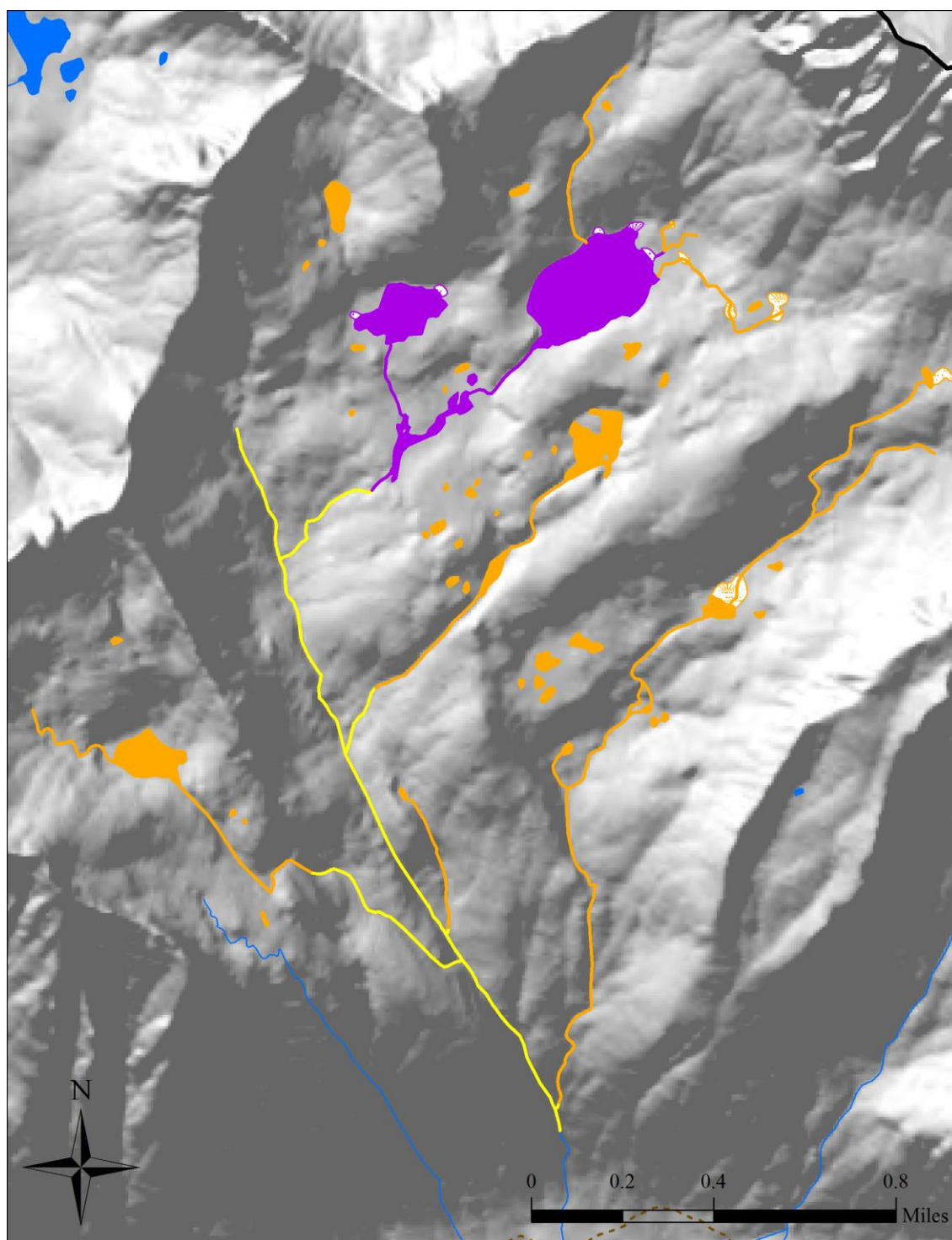




<i>LeConte Canyon</i>					
<b>Treatment</b>	<b># Lakes</b>	<b>(ac.)</b>	<b># Ponds</b>	<b>(ac.)</b>	<b>Stream (mi.)</b>
restored	2	7.3	1	1.3	1.0
<b>Total</b>	<b>2</b>	<b>7.3</b>	<b>1</b>	<b>1.3</b>	<b>1.0</b>

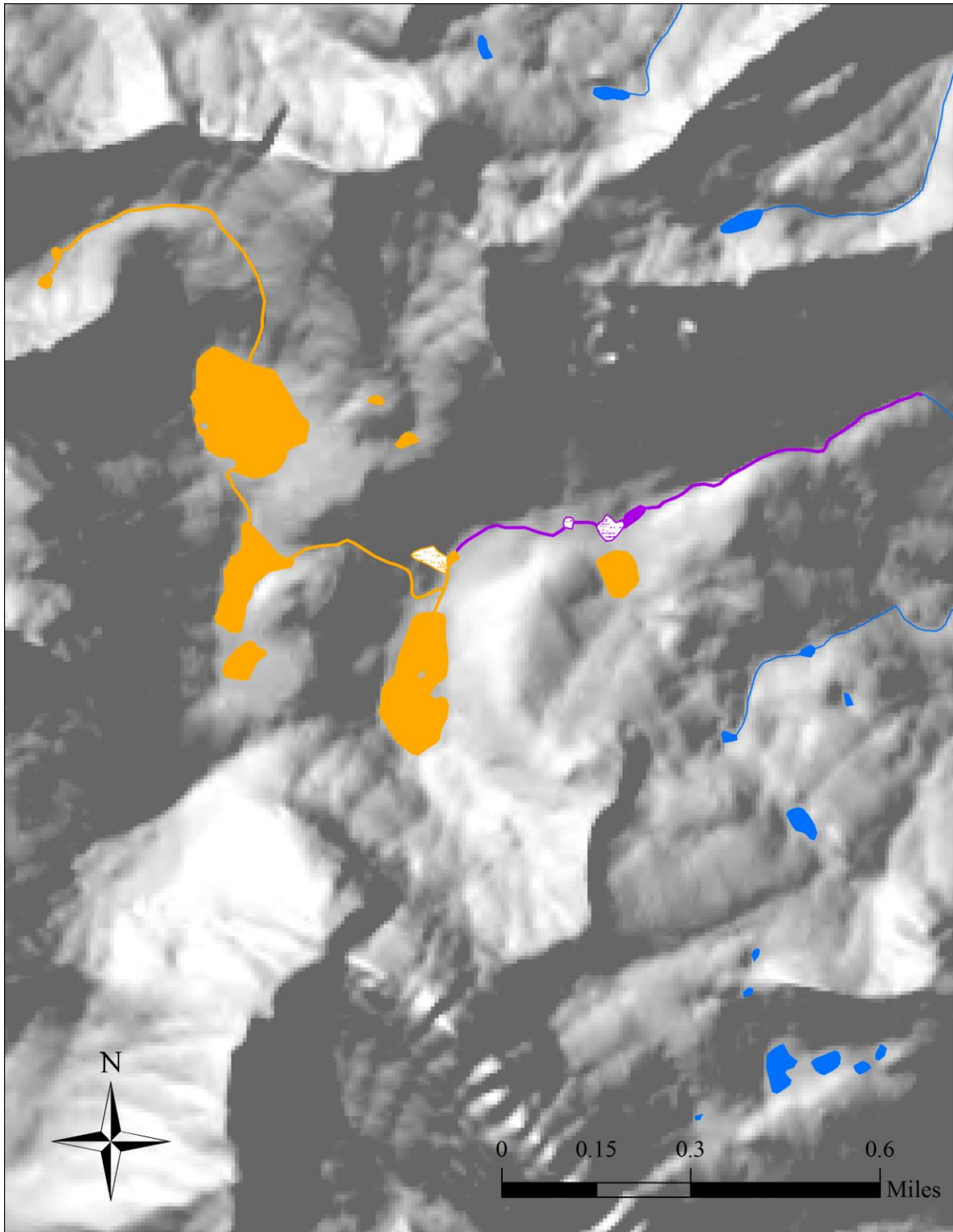


<i>Dusy</i>					
Treatment	# Lakes	(ac.)	# Ponds	(ac.)	Stream (mi.)
physical	1	10.6	2	0.6	0.7
<b>Total</b>	<b>1</b>	<b>10.6</b>	<b>2</b>	<b>0.6</b>	<b>0.7</b>

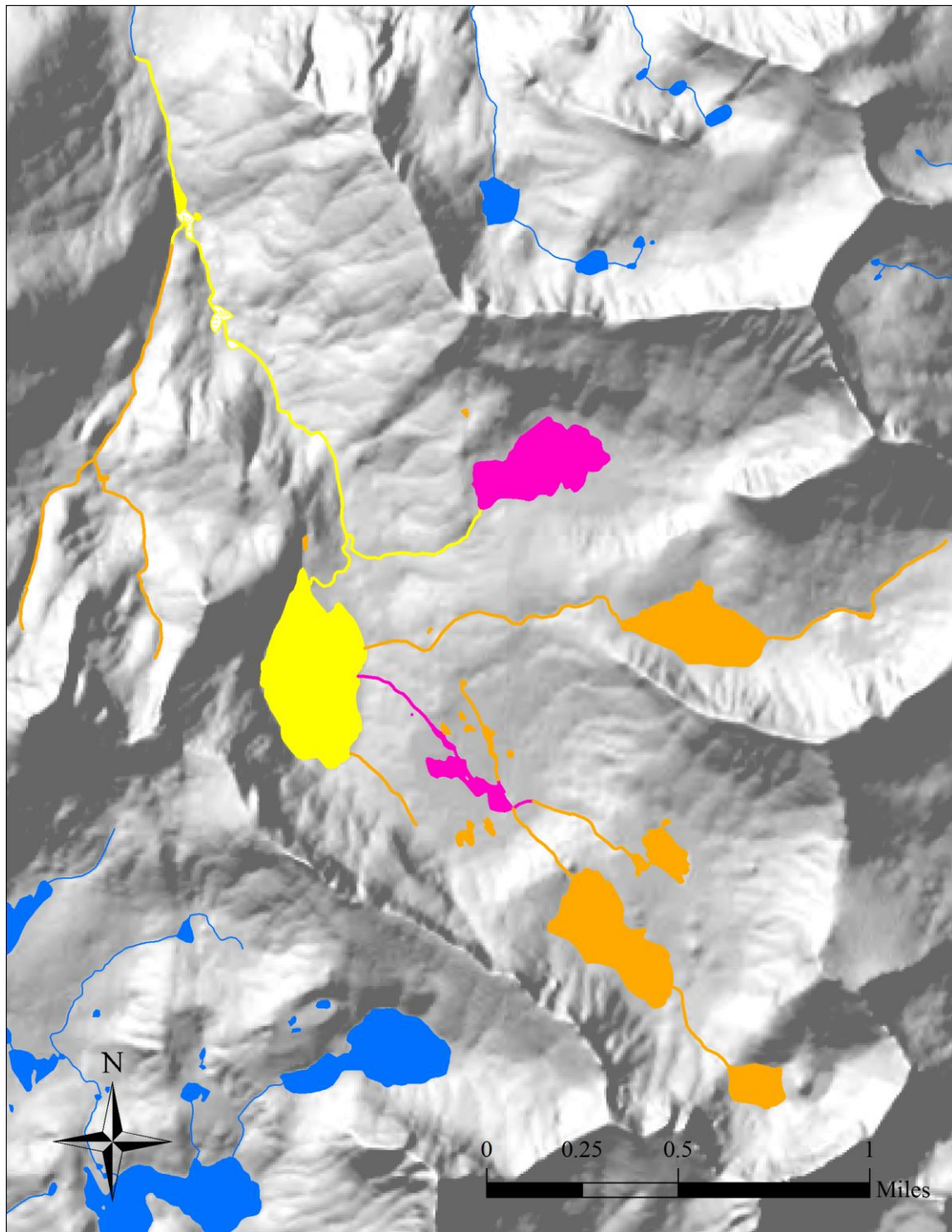


<i>Barrett</i>					
Treatment	# Lakes	(ac.)	# Ponds	(ac.)	Stream (mi.)
physical	3	43.4	1	0.2	0.4
piscicide	0	0.0	0	0.0	2.7
<b>Total</b>	<b>3</b>	<b>43.4</b>	<b>1</b>	<b>0.2</b>	<b>3.1</b>



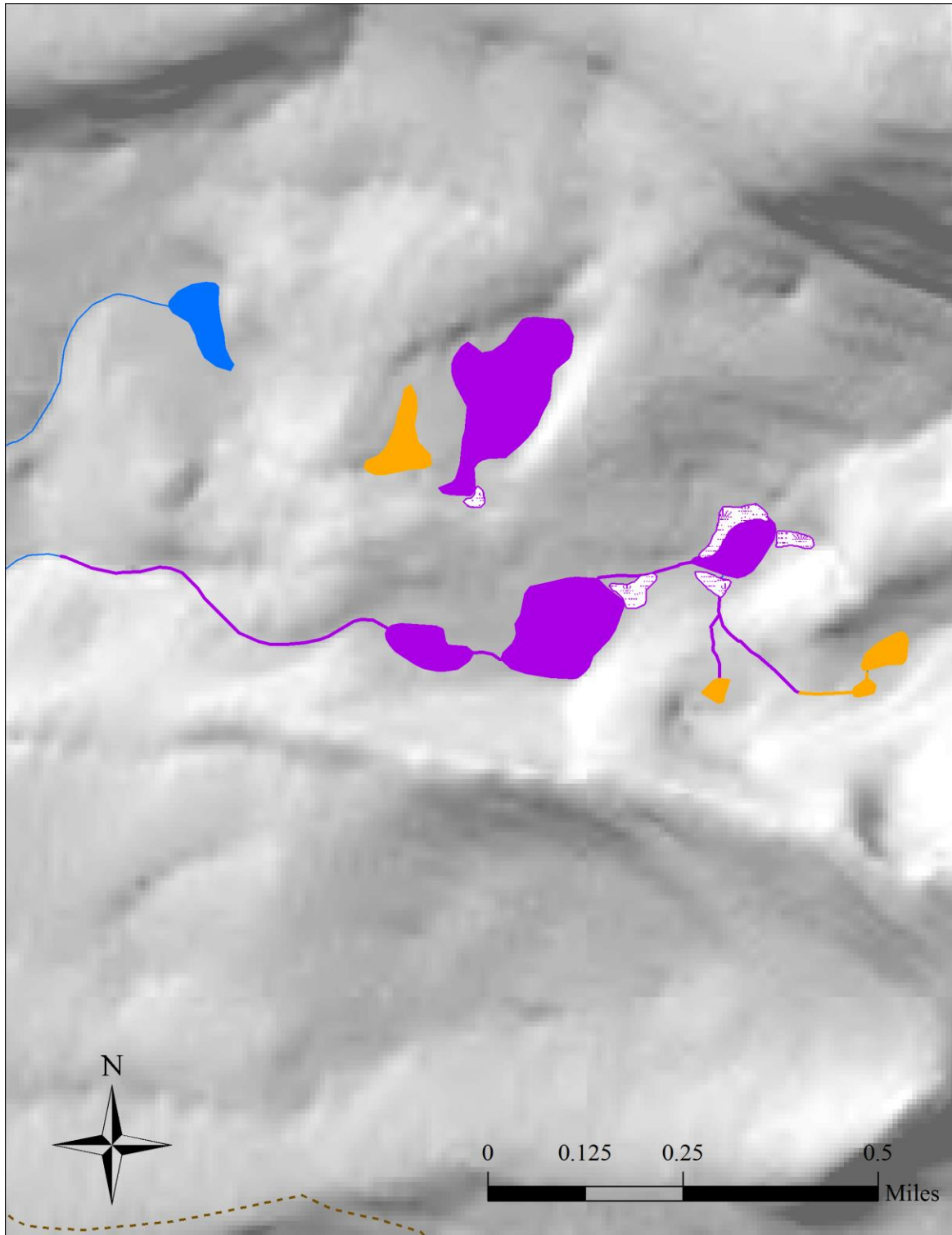


<i>Ramnaud</i>					
Treatment	# Lakes	(ac.)	# Ponds	(ac.)	Stream (mi.)
physical	0	0.0	1	0.4	0.8
<b>Total</b>	<b>0</b>	<b>0.0</b>	<b>1</b>	<b>0.4</b>	<b>0.8</b>

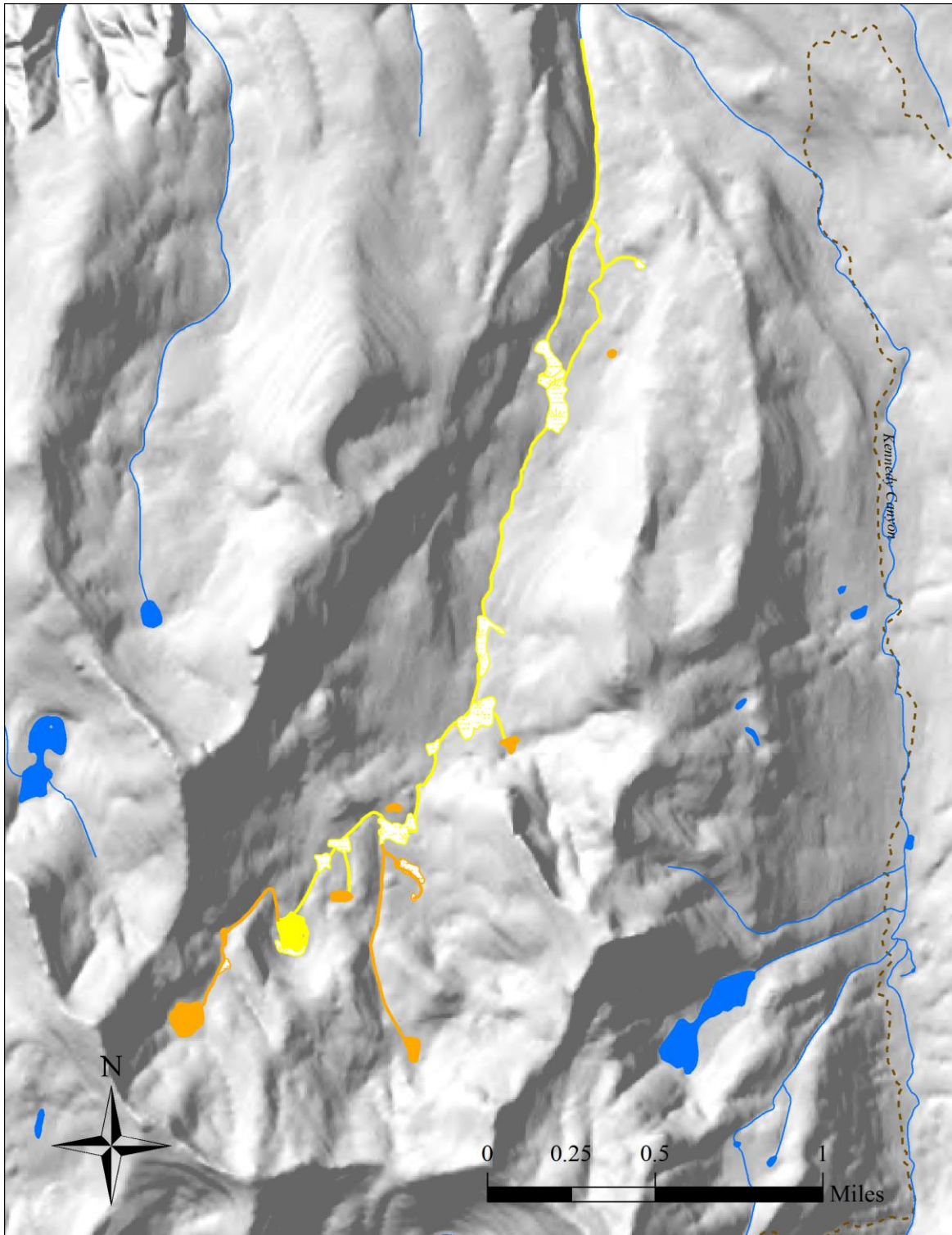


<i>Amphitheater</i>					
Treatment	# Lakes	(ac.)	# Ponds	(ac.)	Stream (mi.)
piscicide	1	58.9	2	1.3	2.2
restored	2	36.8	2	0.7	0.3
<b>Total</b>	<b>3</b>	<b>95.7</b>	<b>4</b>	<b>2.0</b>	<b>2.5</b>

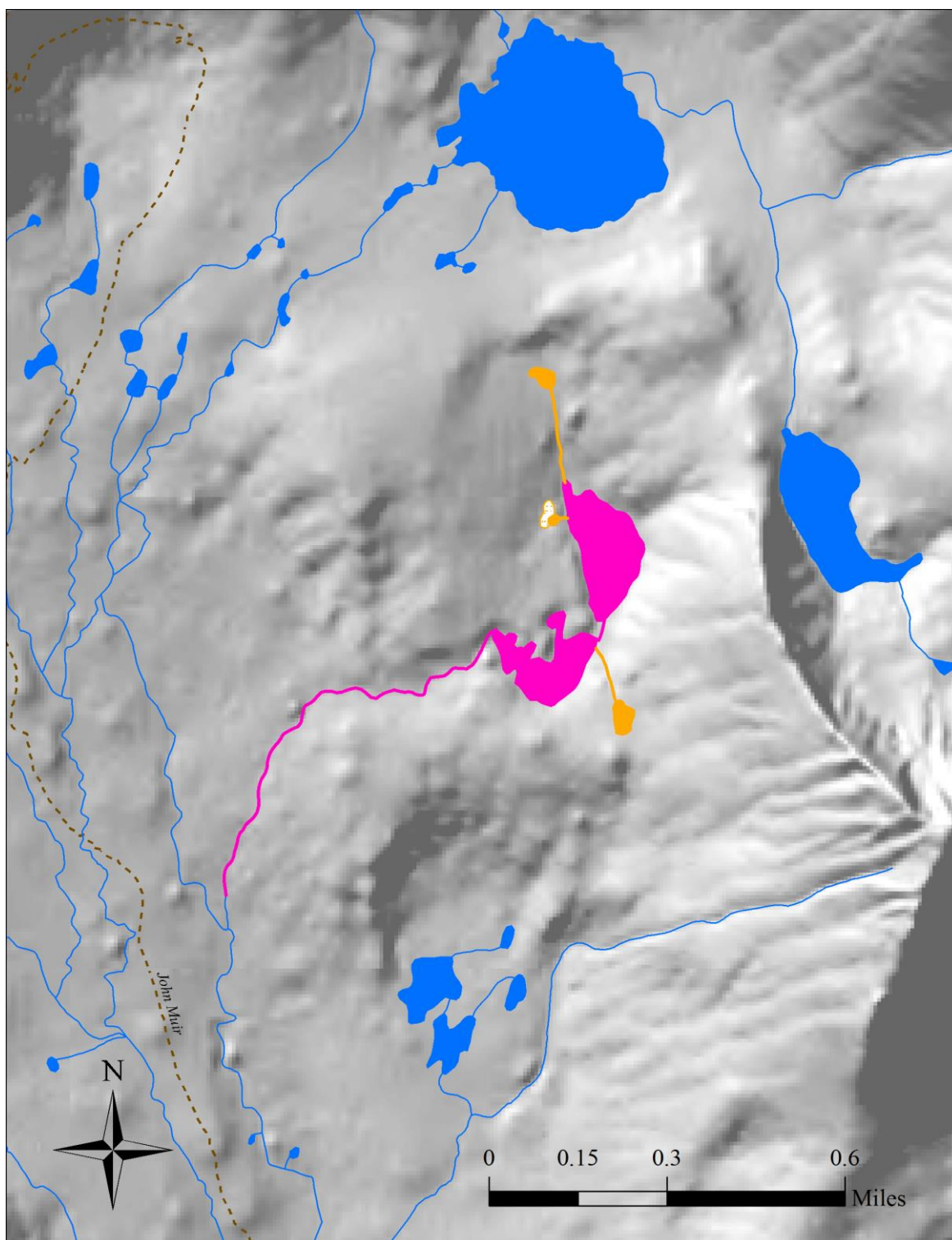




<i>Horseshoe</i>					
<b>Treatment</b>	<b># Lakes</b>	<b>(ac.)</b>	<b># Ponds</b>	<b>(ac.)</b>	<b>Stream (mi.)</b>
physical	4	27.3	0	0.0	0.9
<b>Total</b>	<b>4</b>	<b>27.3</b>	<b>0</b>	<b>0.0</b>	<b>0.9</b>

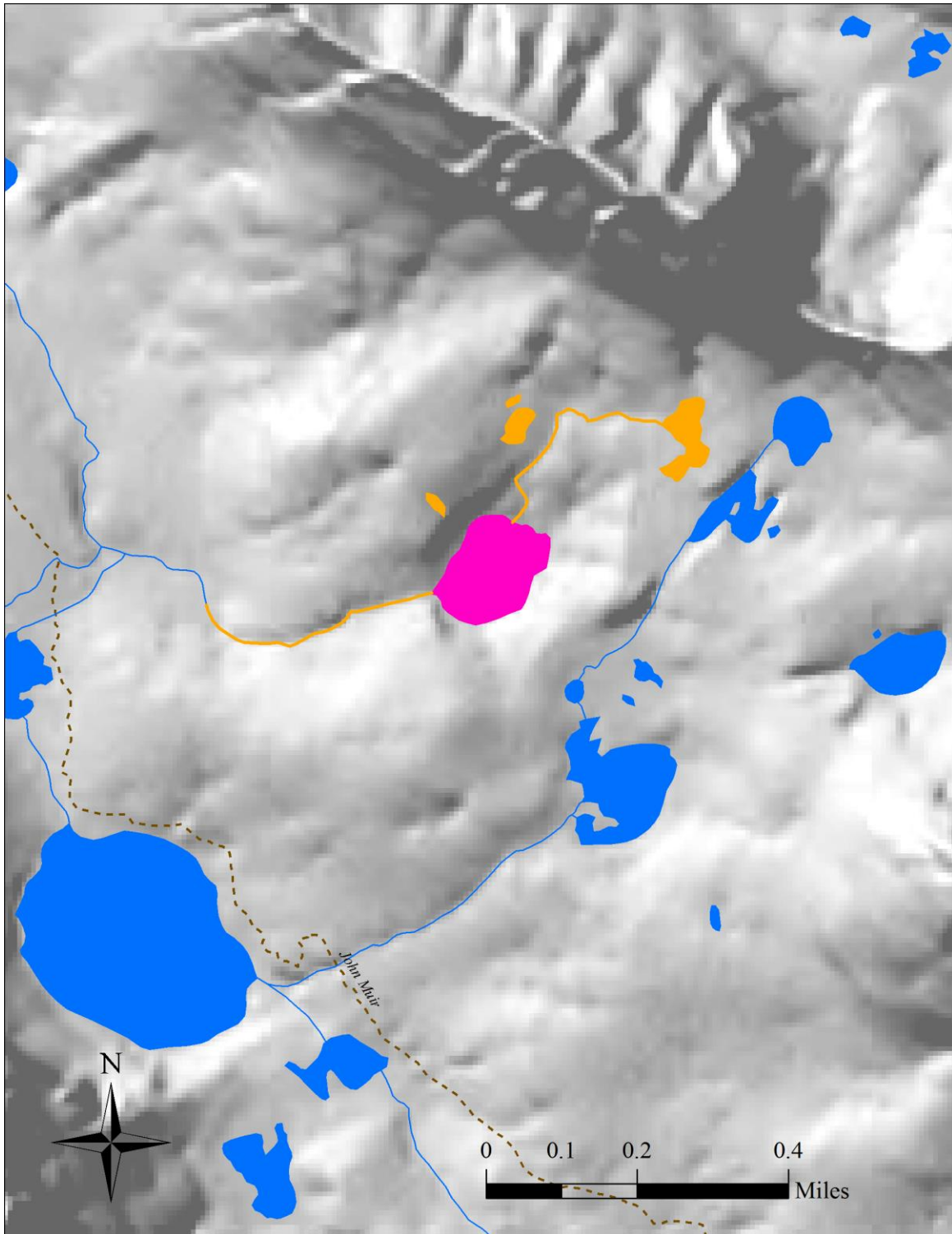


<i>Slide</i>					
<b>Treatment</b>	<b># Lakes</b>	<b>(ac.)</b>	<b># Ponds</b>	<b>(ac.)</b>	<b>Stream (mi.)</b>
piscicide	1	5.1	0	0.0	4.1
<b>Total</b>	<b>1</b>	<b>5.1</b>	<b>0</b>	<b>0.0</b>	<b>4.1</b>

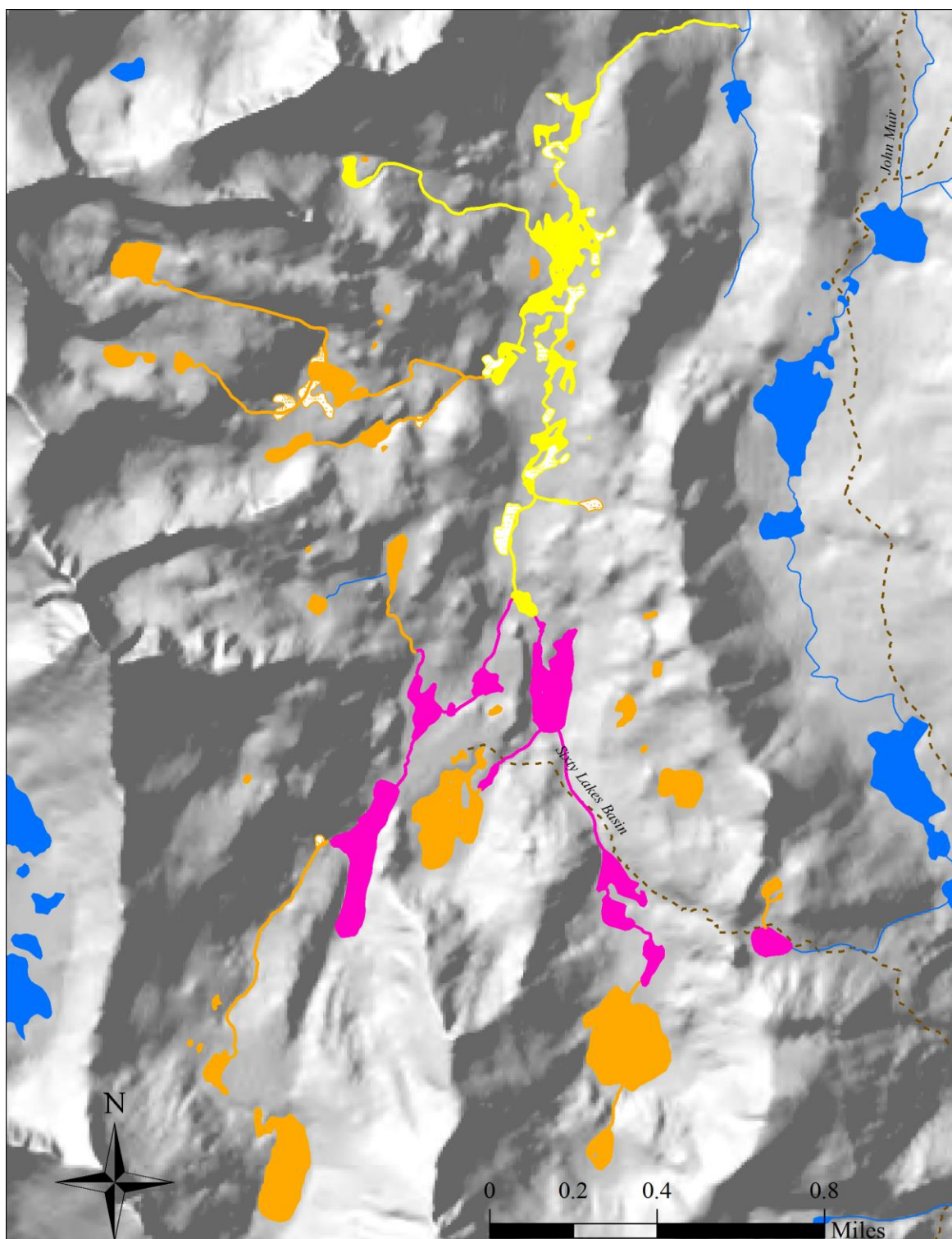


<i>Upper Basin</i>					
<b>Treatment</b>	<b># Lakes</b>	<b>(ac.)</b>	<b># Ponds</b>	<b>(ac.)</b>	<b>Stream (mi.)</b>
restored	2	19.5	0	0.0	0.8
<b>Total</b>	<b>2</b>	<b>19.5</b>	<b>0</b>	<b>0.0</b>	<b>0.8</b>

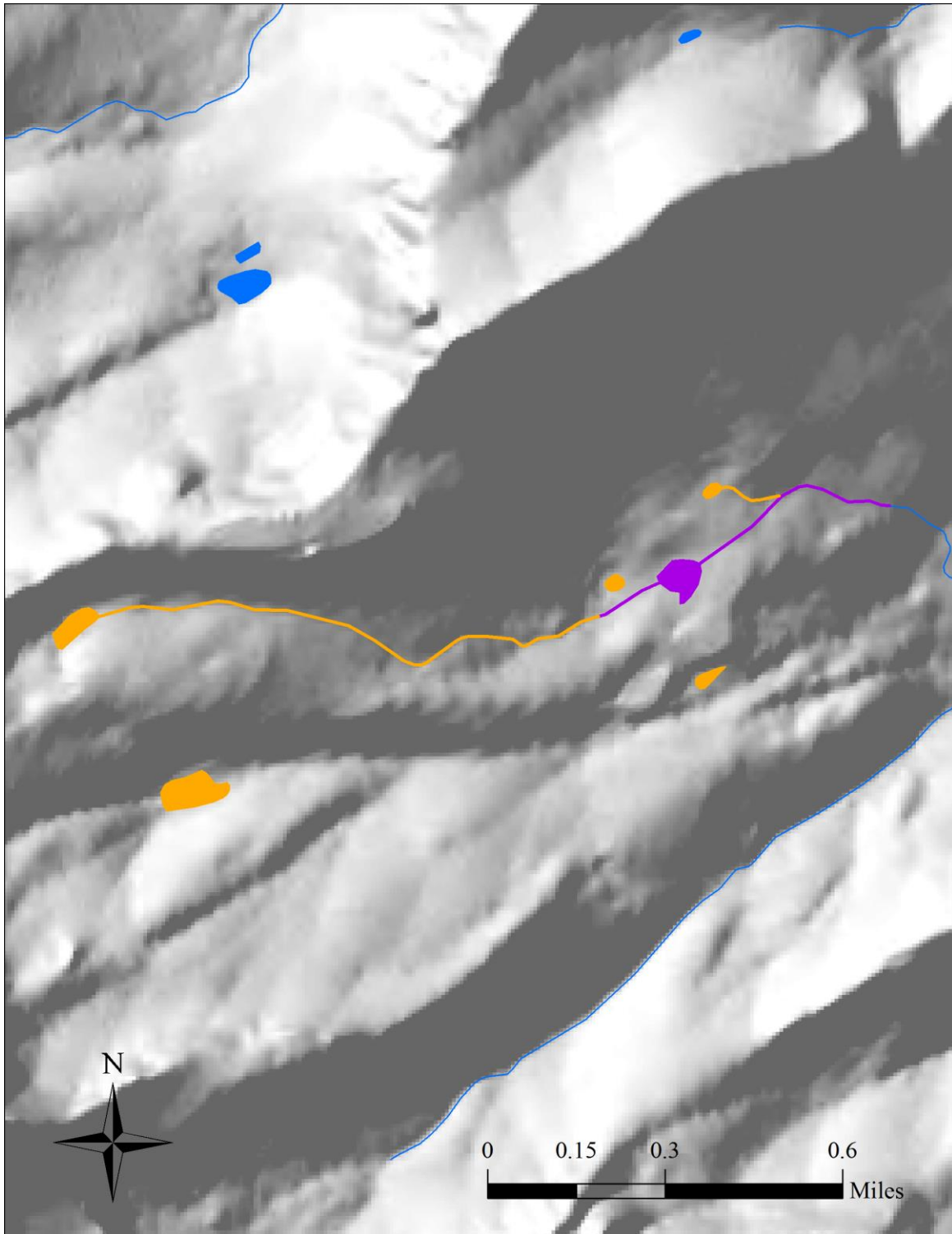




<i>Pinchot</i>					
Treatment	# Lakes	(ac.)	# Ponds	(ac.)	Stream (mi.)
restored	1	9.4	0	0.0	0.0
<b>Total</b>	<b>1</b>	<b>9.4</b>	<b>0</b>	<b>0.0</b>	<b>0.0</b>

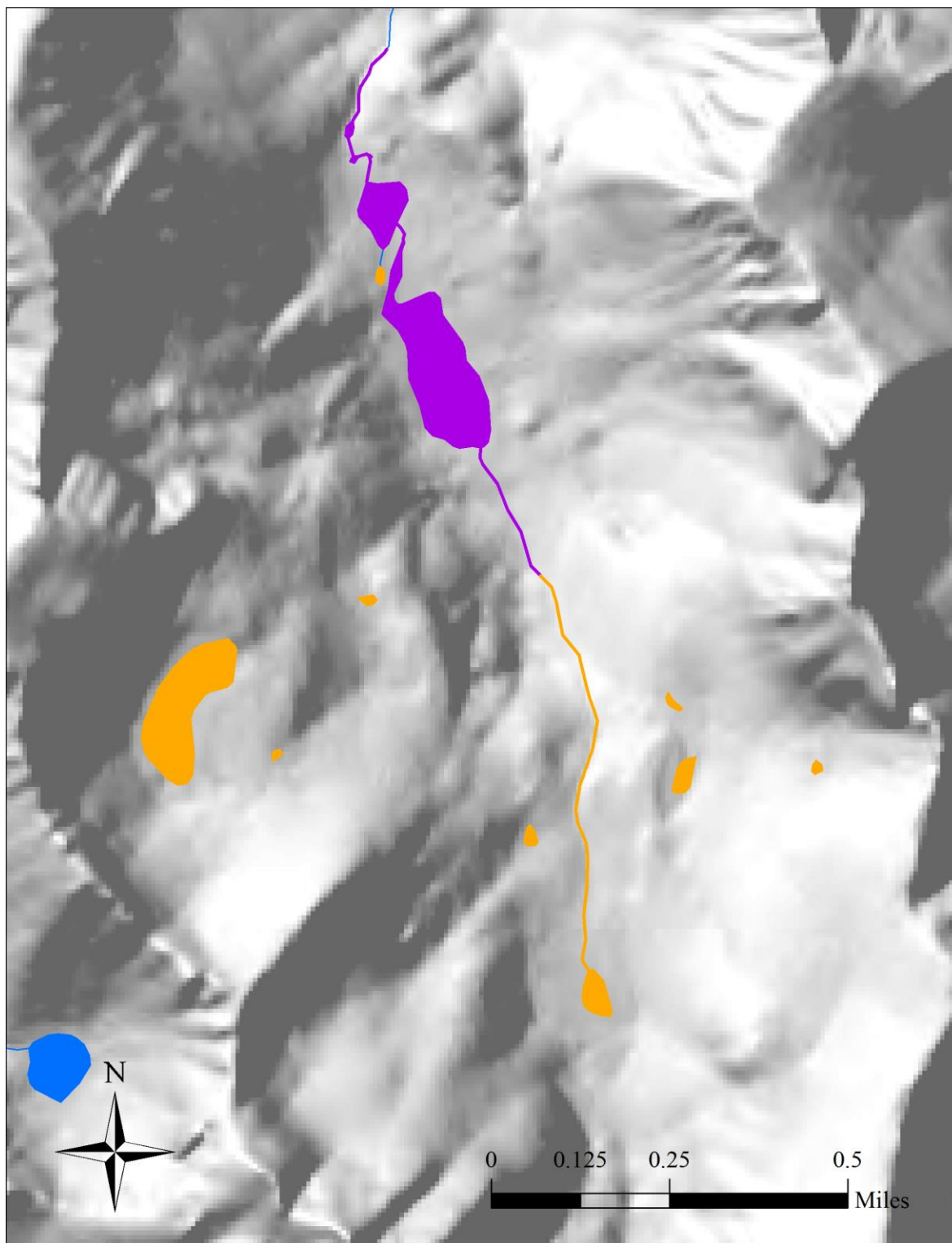


<i>Sixty Lake</i>					
<b>Treatment</b>	<b># Lakes</b>	<b>(ac.)</b>	<b># Ponds</b>	<b>(ac.)</b>	<b>Stream (mi.)</b>
restored	5	36.5	6	7.7	1.0
piscicide	1	12.9	16	14.6	1.8
<b>Total</b>	<b>6</b>	<b>49.4</b>	<b>22</b>	<b>22.3</b>	<b>2.9</b>

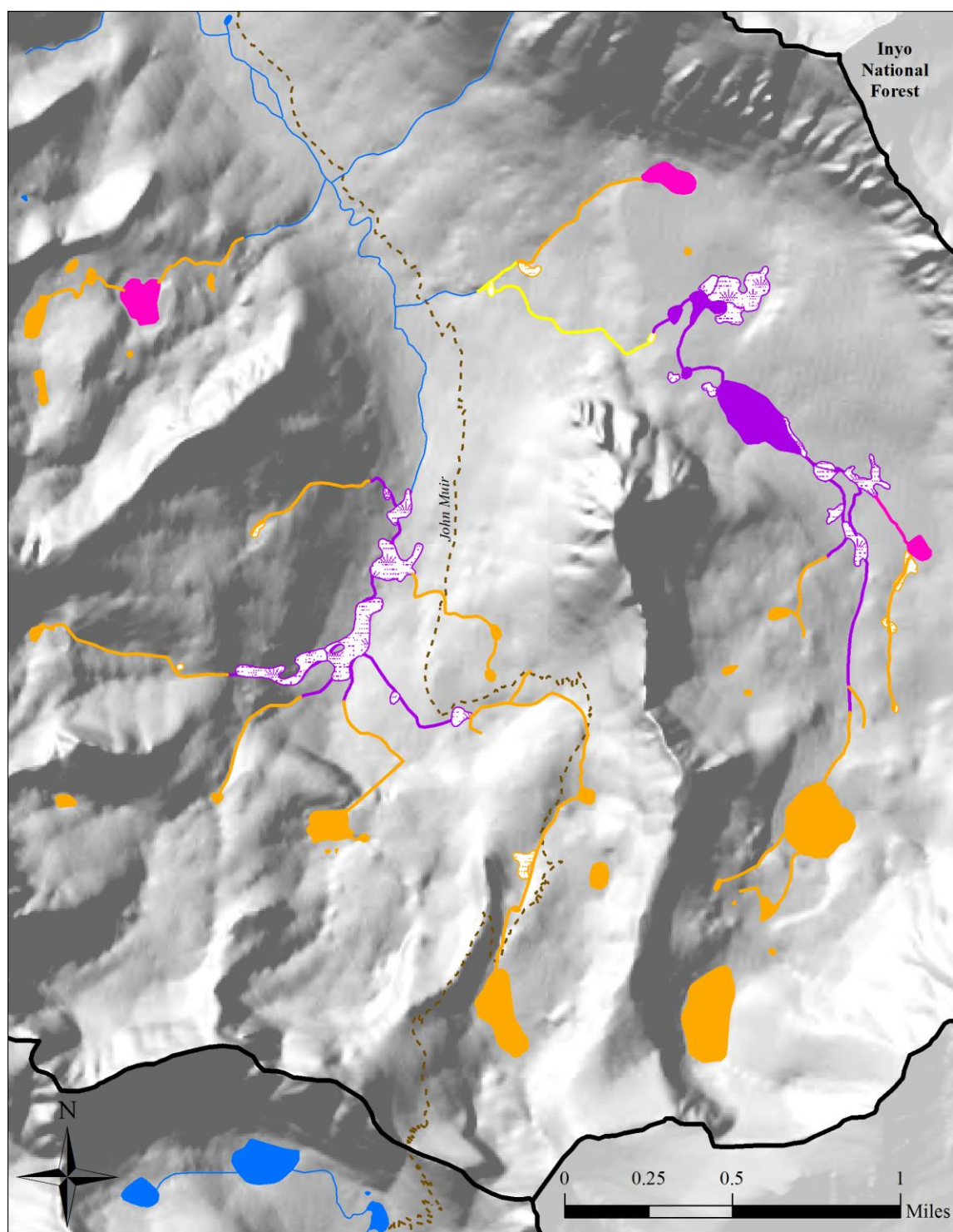


<i>Brewer</i>					
Treatment	# Lakes	(ac.)	# Ponds	(ac.)	Stream (mi.)
physical	0	0.0	1	2.2	0.5
<b>Total</b>	<b>0</b>	<b>0.0</b>	<b>1</b>	<b>2.2</b>	<b>0.5</b>

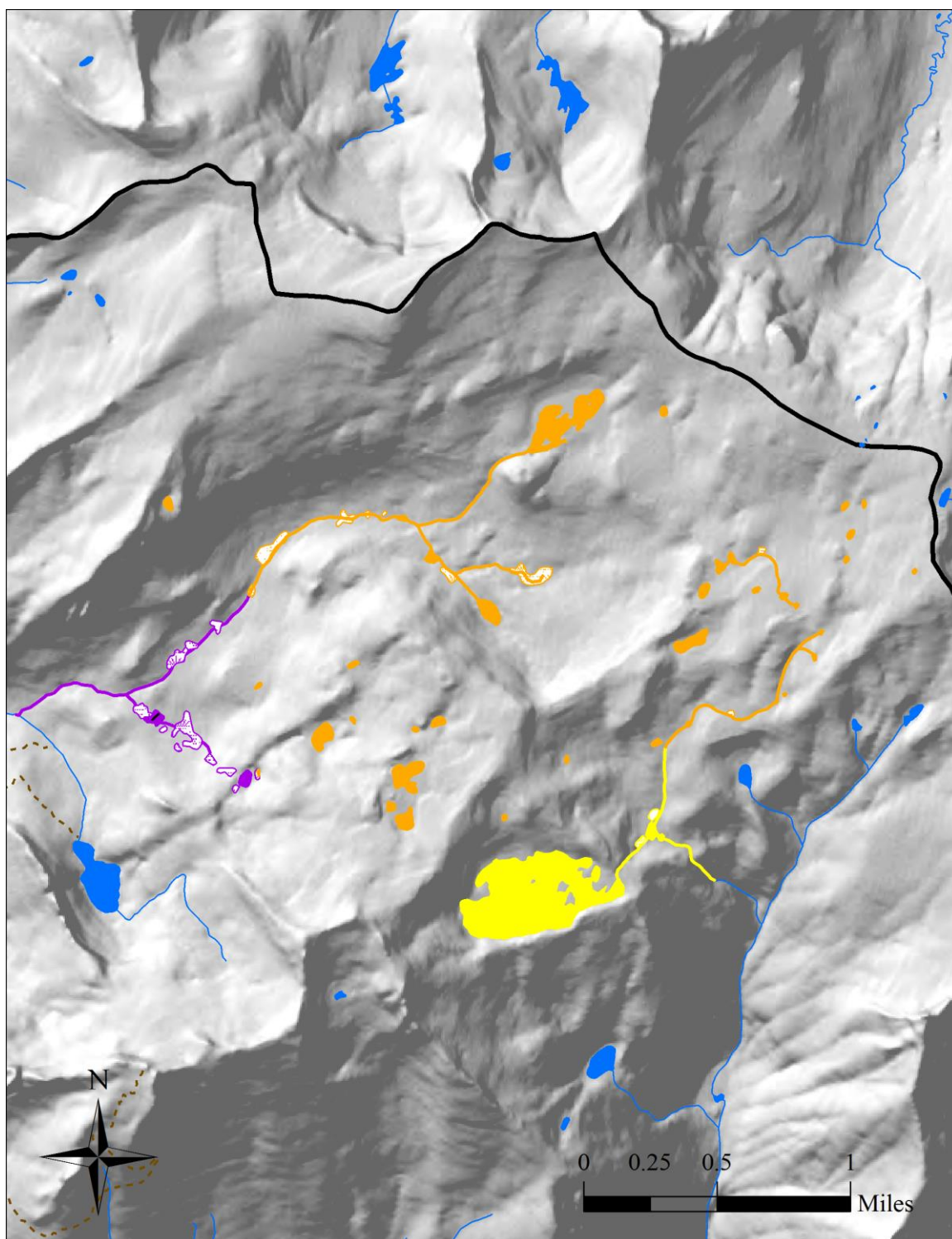




<i>Vidette</i>					
<b>Treatment</b>	<b># Lakes</b>	<b>(ac.)</b>	<b># Ponds</b>	<b>(ac.)</b>	<b>Stream (mi.)</b>
physical	2	14.7	3	0.2	0.4

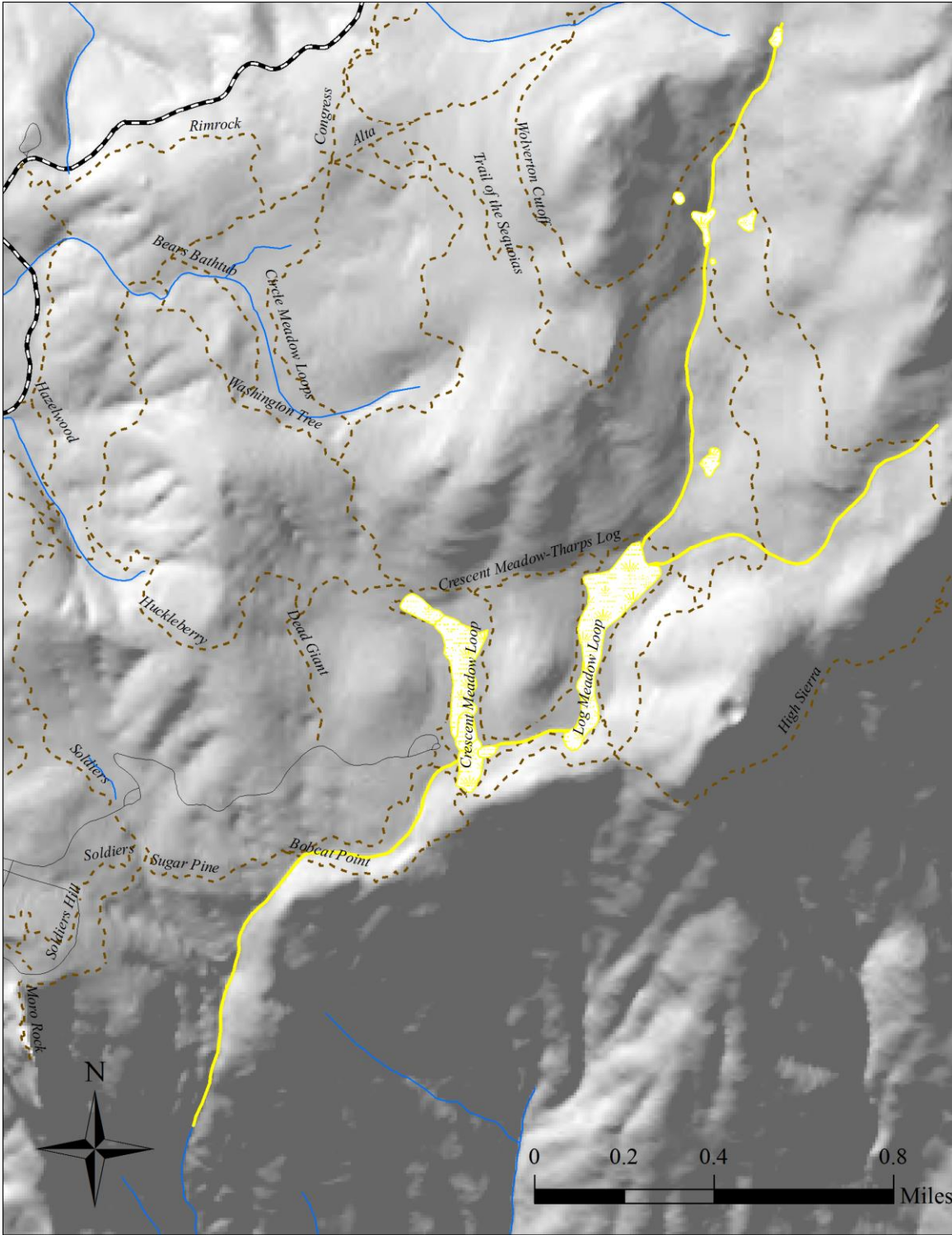


<i>Upper Bubbs Creek</i>					
<b>Treatment</b>	<b># Lakes</b>	<b>(ac.)</b>	<b># Ponds</b>	<b>(ac.)</b>	<b>Stream (mi.)</b>
restored	2	13.2	1	2.2	0.2
physical	2	21.1	2	1.5	3.7
piscicide	0	0.0	0	0.0	0.8
<b>Total</b>	<b>4</b>	<b>34.4</b>	<b>3</b>	<b>3.7</b>	<b>4.7</b>

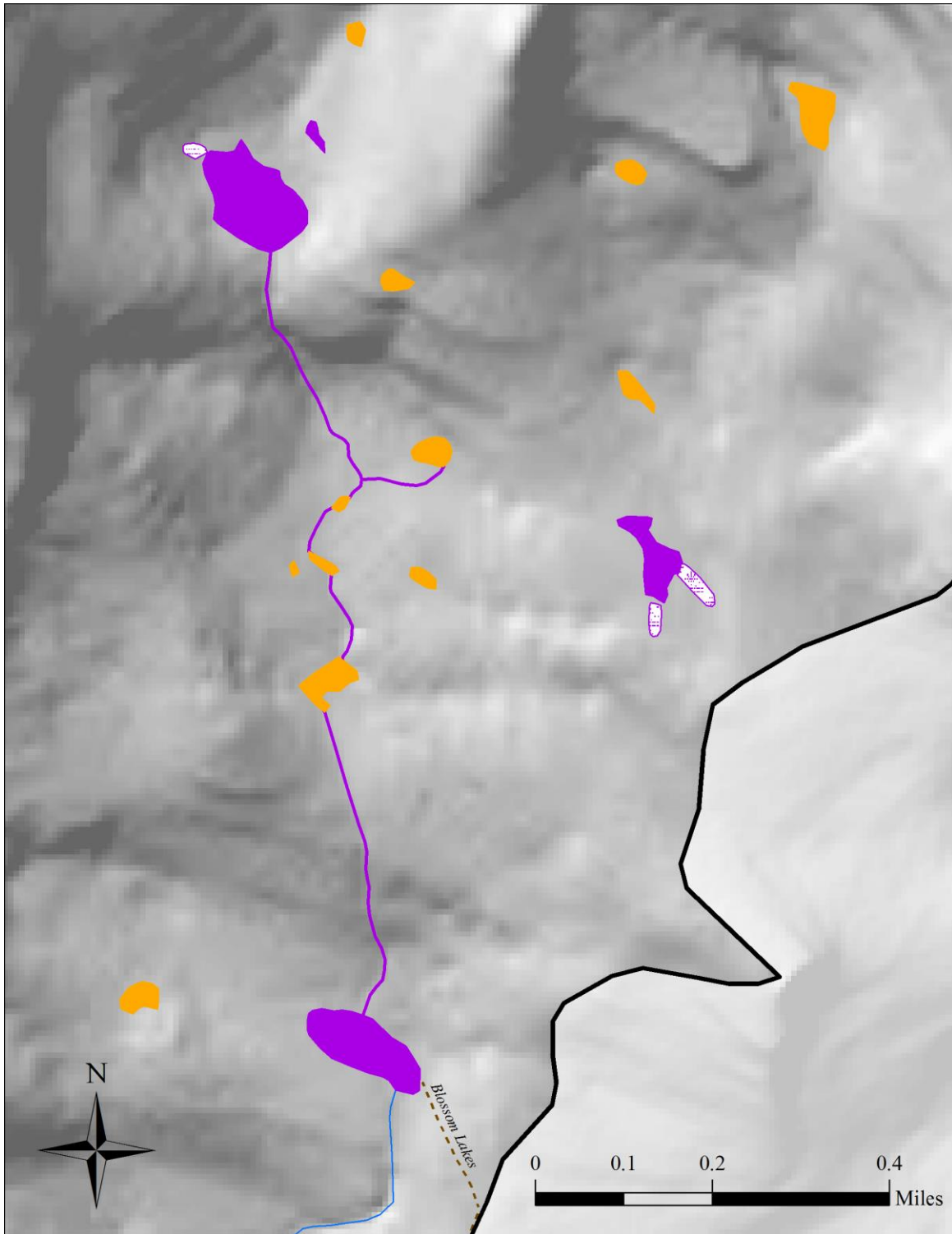


<i>Tablelands</i>					
<b>Treatment</b>	<b># Lakes</b>	<b>(ac.)</b>	<b># Ponds</b>	<b>(ac.)</b>	<b>Stream (mi.)</b>
physical	0	0.0	1	1.4	1.5
piscicide	1	76.8	1	1.6	0.8
<b>Total</b>	<b>1</b>	<b>76.8</b>	<b>2</b>	<b>2.9</b>	<b>2.2</b>

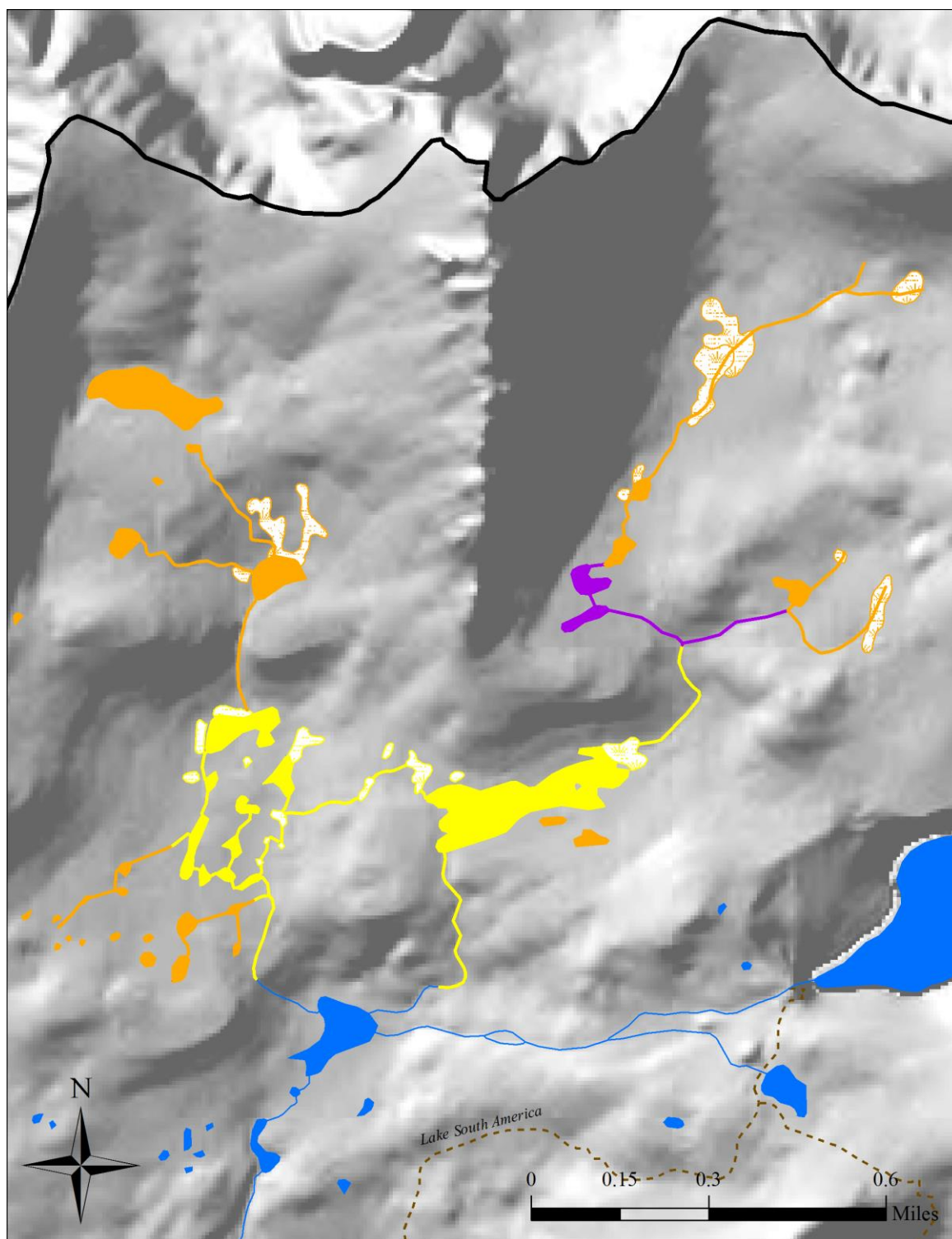




<i>Crescent</i>					
Treatment	# Lakes	(ac.)	# Ponds	(ac.)	Stream (mi.)
piscicide	0	0.0	0	0.0	4.0
<b>Total</b>	<b>0</b>	<b>0.0</b>	<b>0</b>	<b>0.0</b>	<b>4.0</b>

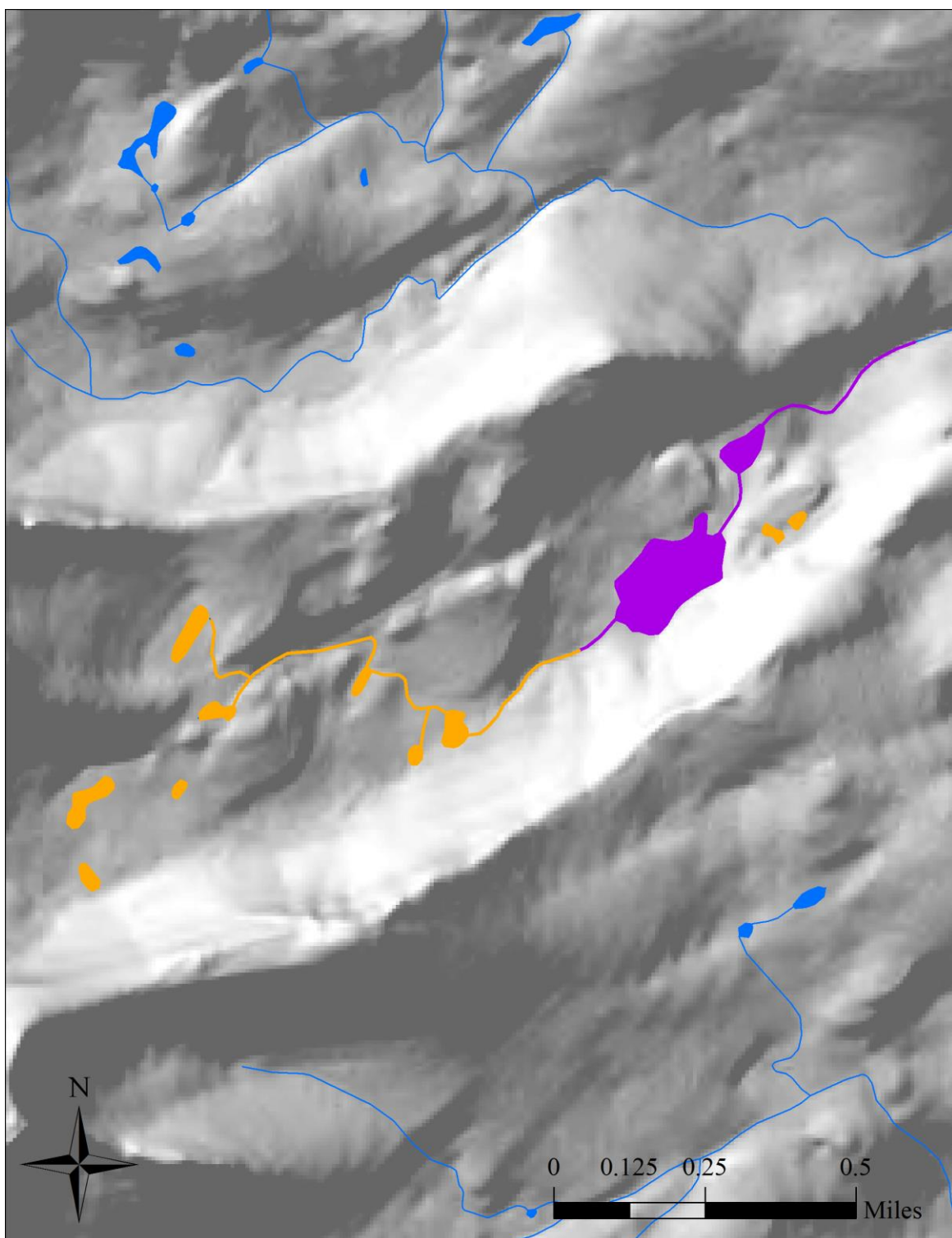


<i>Blossom</i>					
Treatment	# Lakes	(ac.)	# Ponds	(ac.)	Stream (mi.)
physical	2	10.0	2	2.0	1.0
<b>Total</b>	<b>2</b>	<b>10.0</b>	<b>2</b>	<b>2.0</b>	<b>1.0</b>

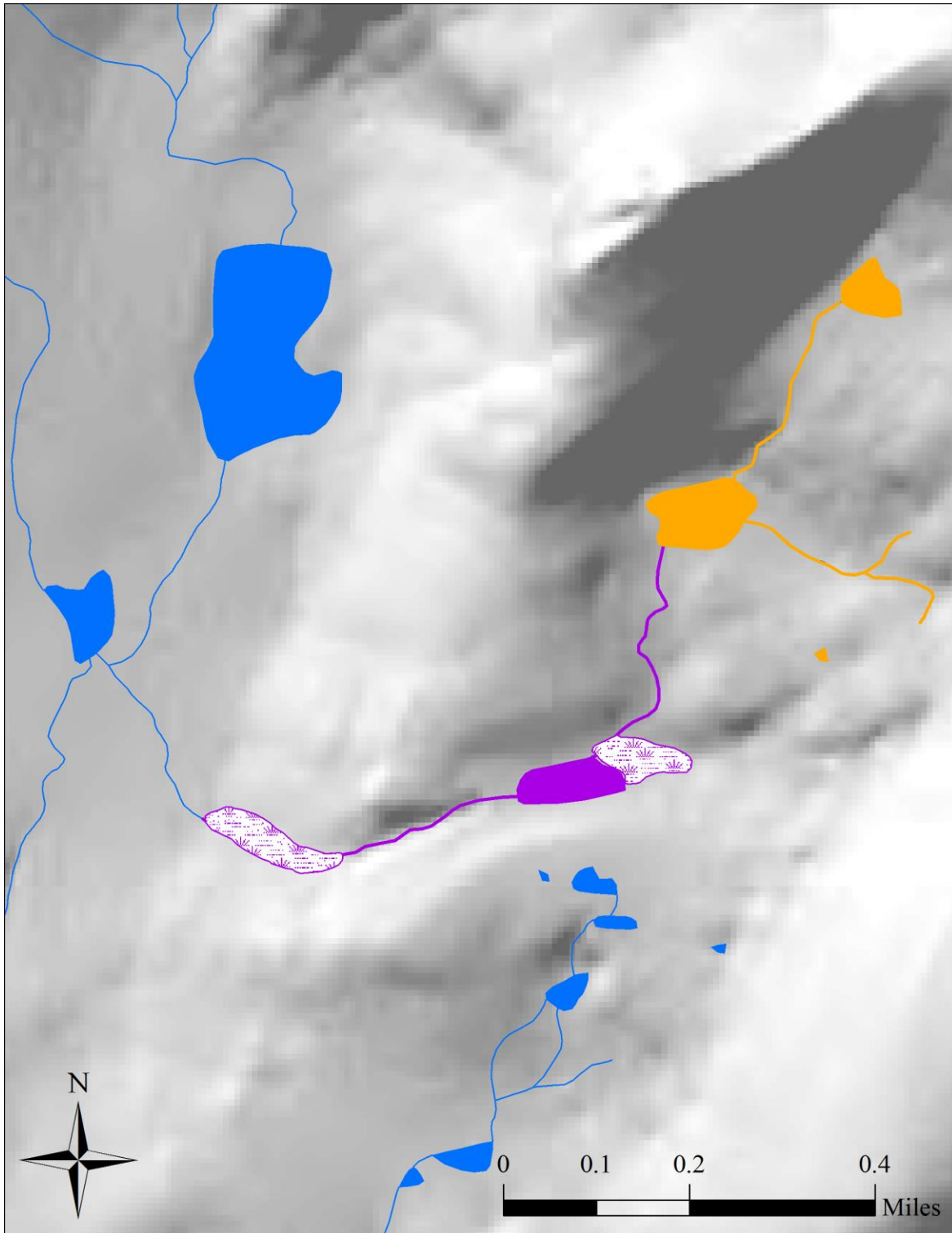


<i>Upper Kern</i>					
Treatment	# Lakes	(ac.)	# Ponds	(ac.)	Stream (mi.)
physical	0	0.0	2	2.1	0.4
piscicide	2	18.3	8	4.2	1.5
<b>Total</b>	<b>2</b>	<b>18.3</b>	<b>10</b>	<b>6.3</b>	<b>1.9</b>

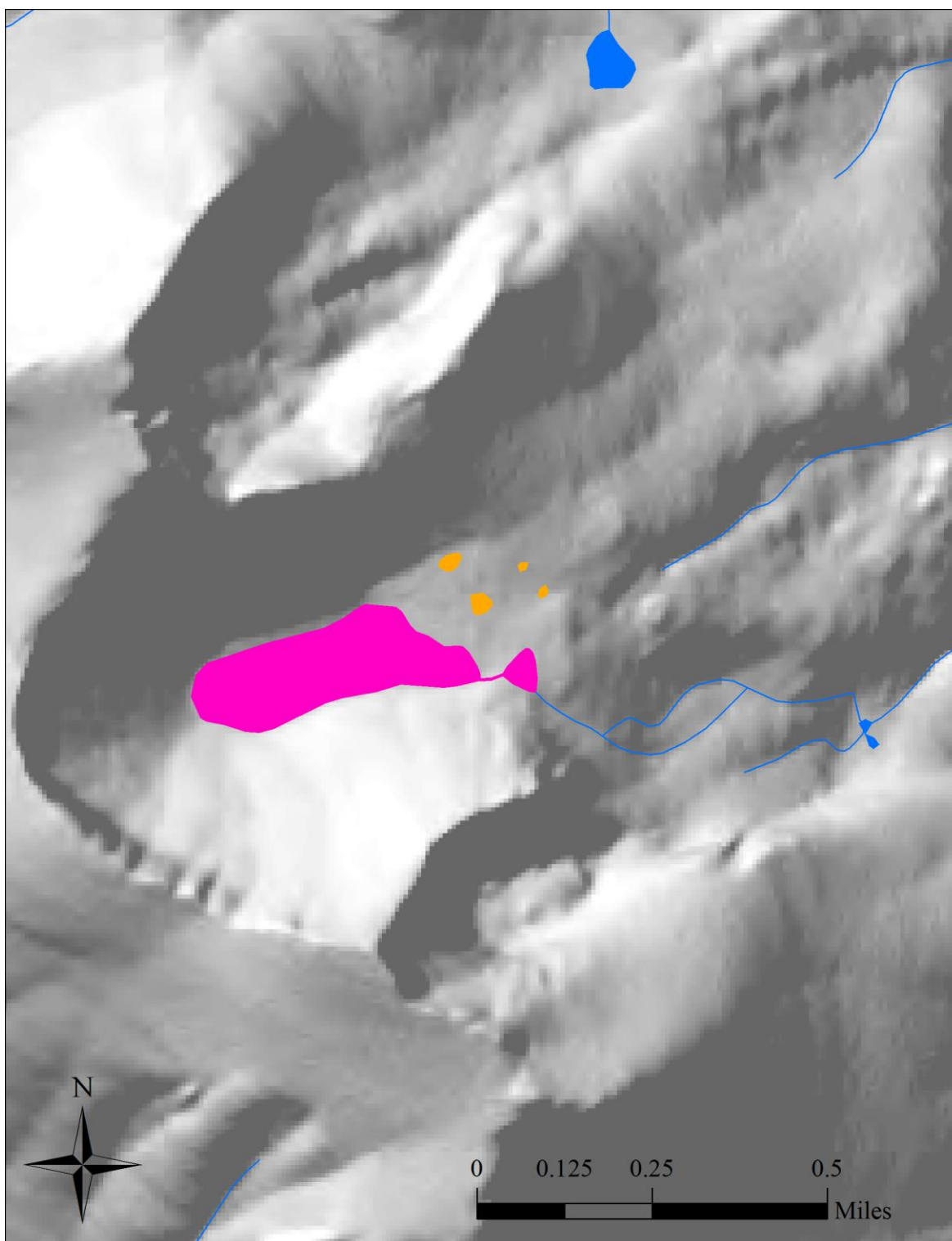




<i>Milestone</i>					
<b>Treatment</b>	<b># Lakes</b>	<b>(ac.)</b>	<b># Ponds</b>	<b>(ac.)</b>	<b>Stream (mi.)</b>
piscicide	1	12.8	1	2.1	0.5
<b>Total</b>	<b>1</b>	<b>12.8</b>	<b>1</b>	<b>2.1</b>	<b>0.5</b>

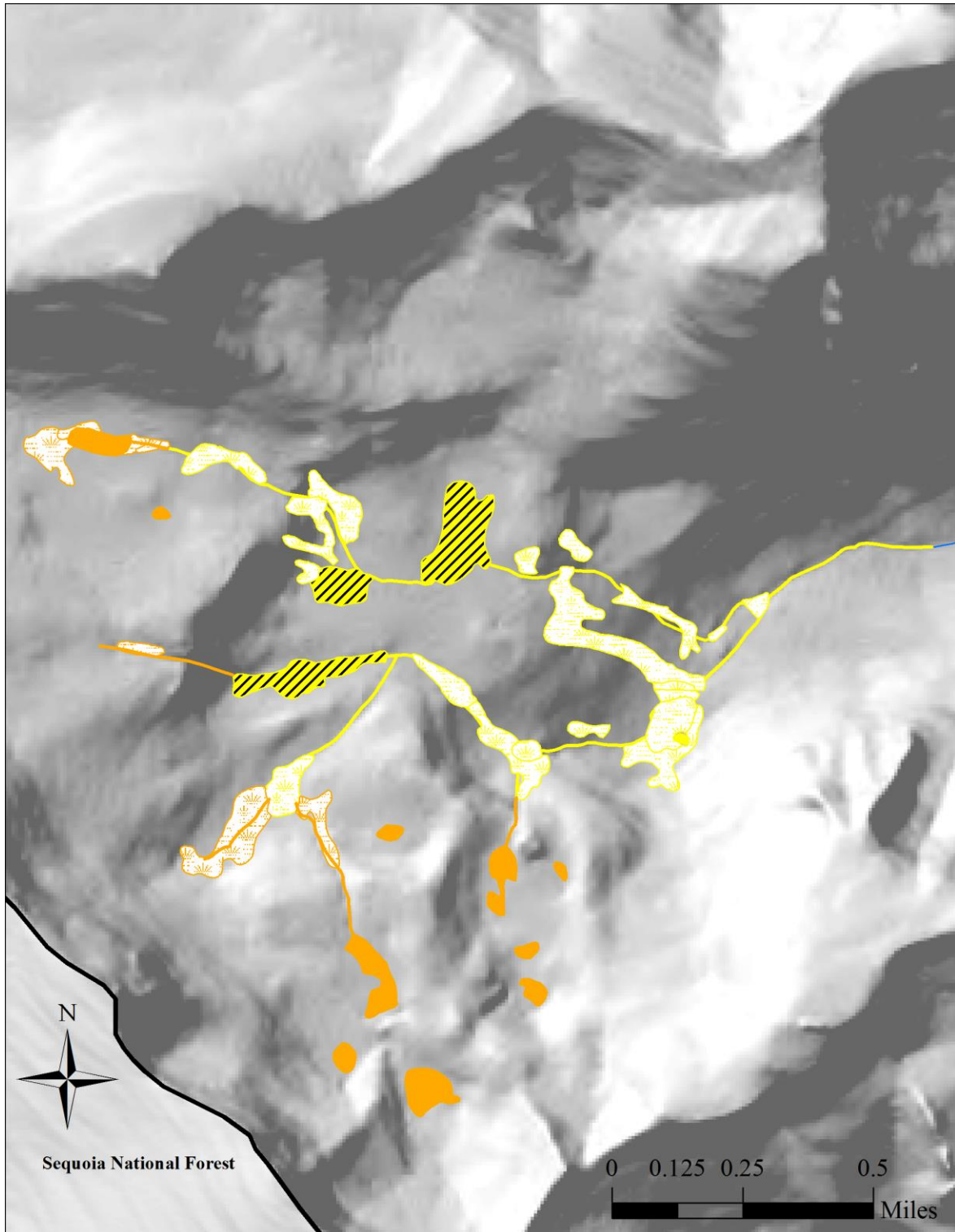


<i>East Wright</i>					
Treatment	# Lakes	(ac.)	# Ponds	(ac.)	Stream (mi.)
physical	1	2.6	0	0.0	0.7
<b>Total</b>	<b>1</b>	<b>2.6</b>	<b>0</b>	<b>0.0</b>	<b>0.7</b>

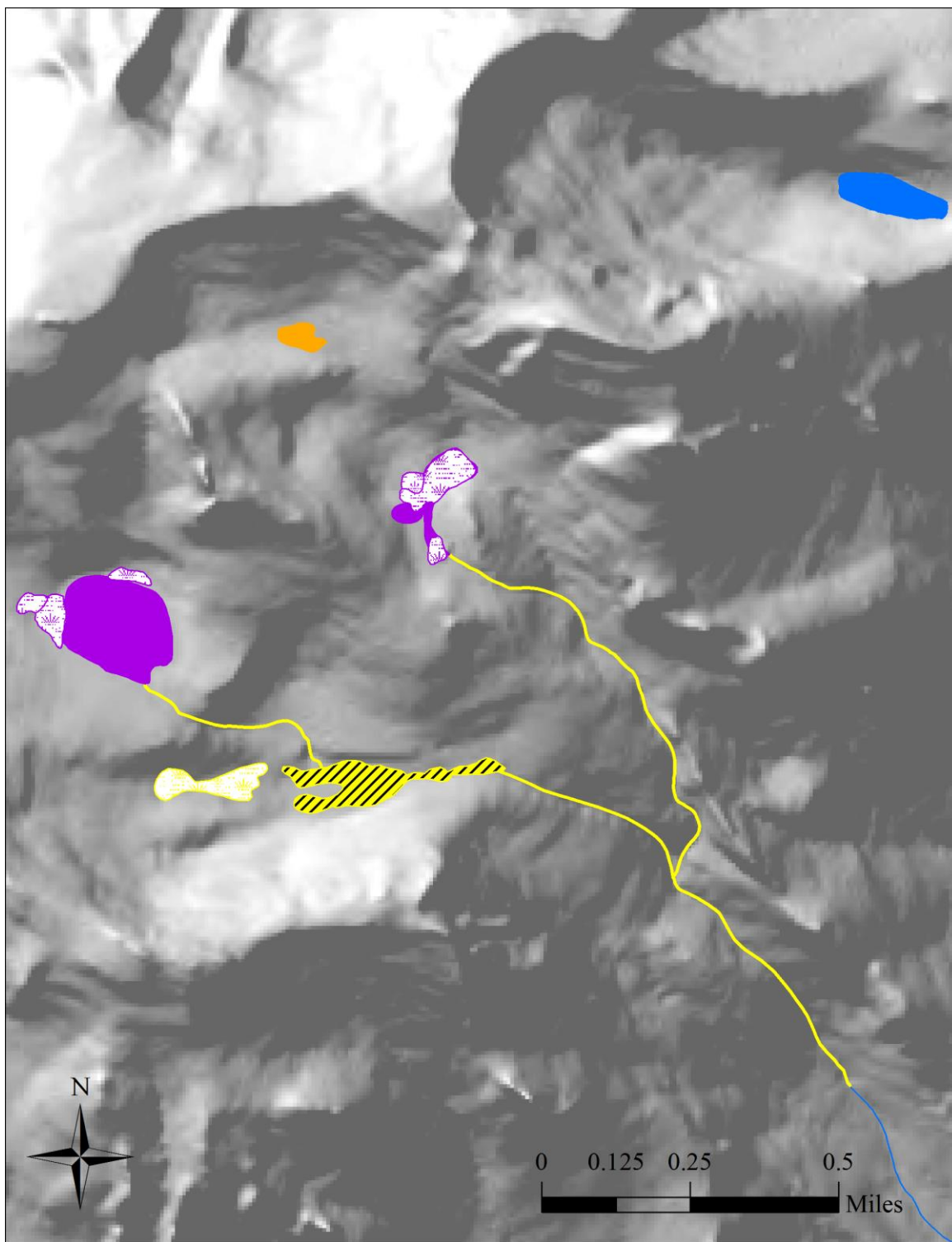


<i>Kern Point</i>					
<b>Treatment</b>	<b># Lakes</b>	<b>(ac.)</b>	<b># Ponds</b>	<b>(ac.)</b>	<b>Stream (mi.)</b>
restored	1	25.2	1	1.2	0.0
<b>Total</b>	<b>1</b>	<b>25.2</b>	<b>1</b>	<b>1.2</b>	<b>0.0</b>





<i>Laurel</i>					
Treatment	# Lakes	(ac.)	# Ponds	(ac.)	Stream (mi.)
piscicide	0	0.0	1	0.2	5.0
<b>Total</b>	<b>0</b>	<b>0.0</b>	<b>1</b>	<b>0.2</b>	<b>5.0</b>



<i>Cryptes</i>					
Treatment	# Lakes	(ac.)	# Ponds	(ac.)	Stream (mi.)
physical	2	20.6	1	0.9	0.0
piscicide	0	0.0	0	0.0	3.4
<b>Total</b>	<b>2</b>	<b>20.6</b>	<b>1</b>	<b>0.9</b>	<b>3.4</b>

*This page intentionally left blank.*