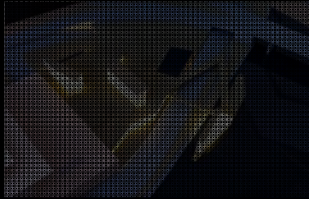


The John F. Kennedy Center for the Performing Arts Expansion

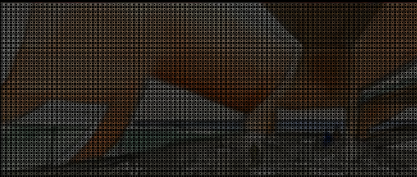
5 STRATEGIES



3 PAVILIONS: a) Entry Pavilion
b) Glissando Pavilion
c) River Pavilion



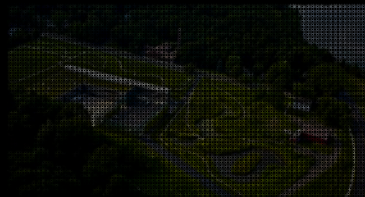
FUSION WITH LANDSCAPE AND RIVER



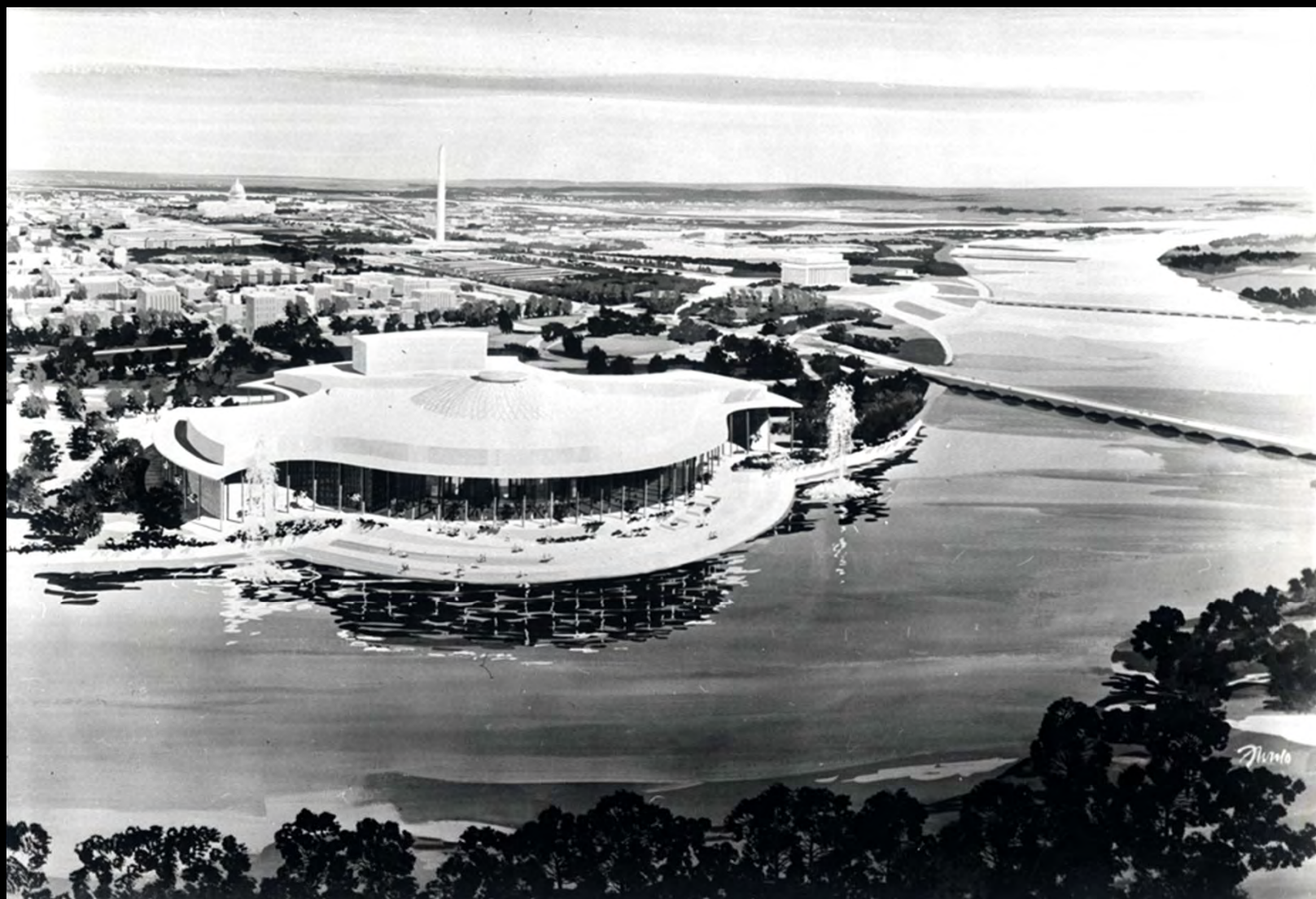
INSTRUMENT WITH NATURAL LIGHT

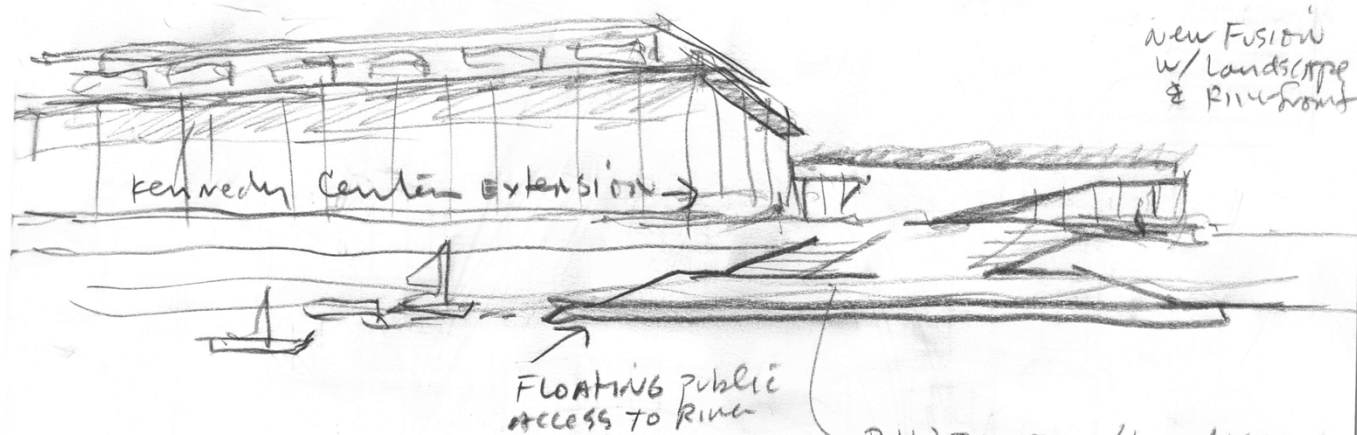


MATERIAL INNOVATION / RELATION

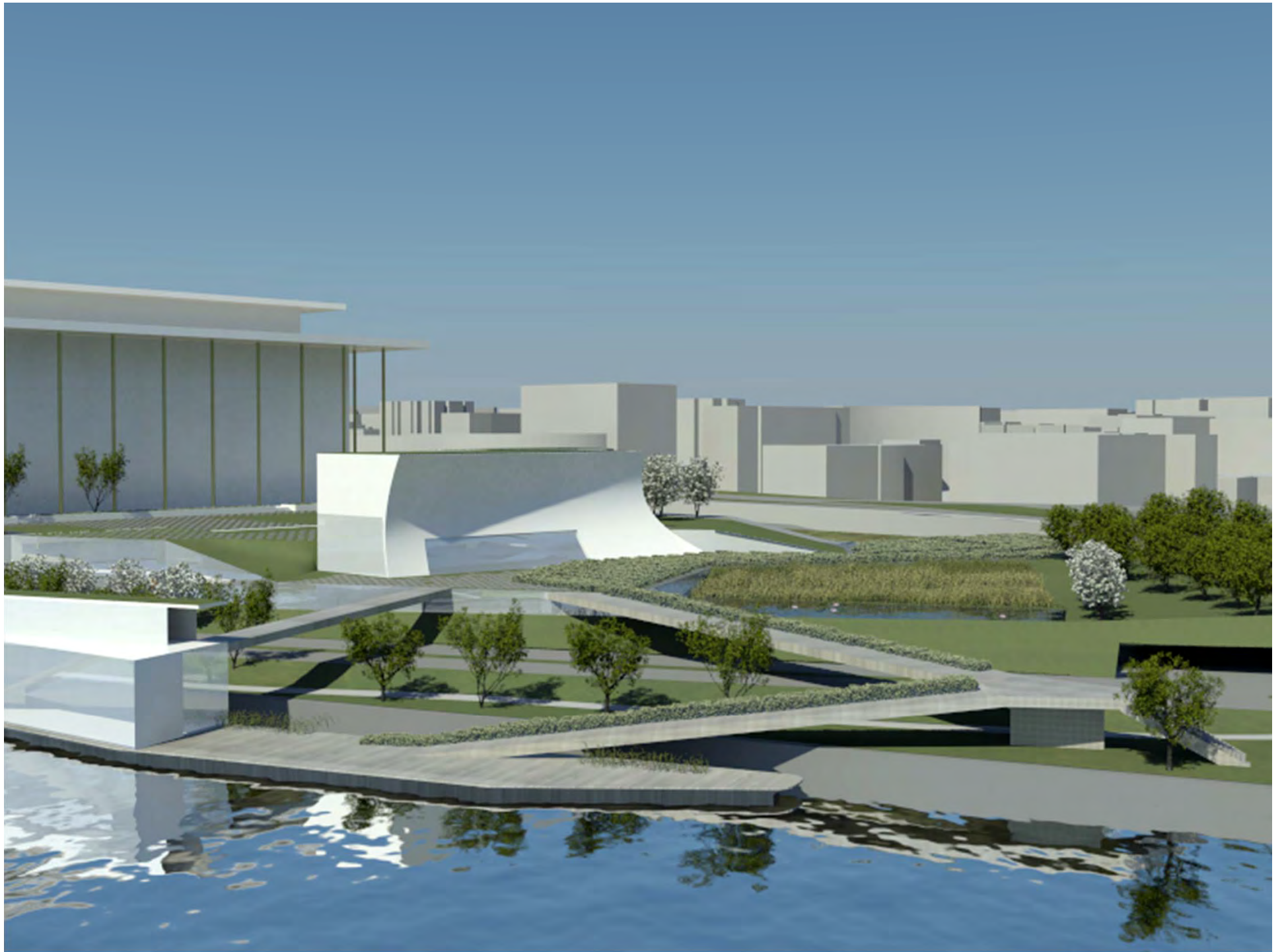


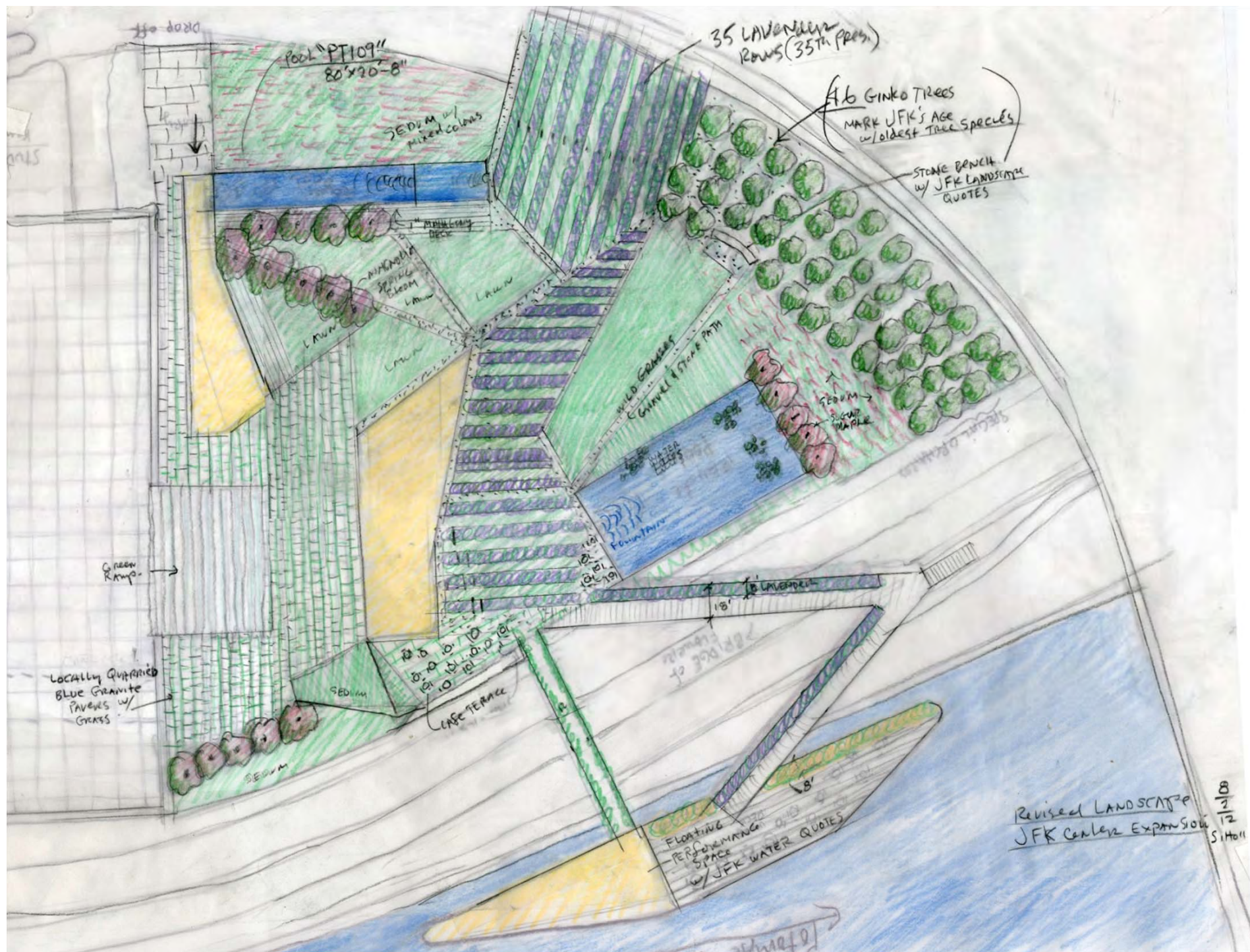
ECOLOGICAL INTEGRATION

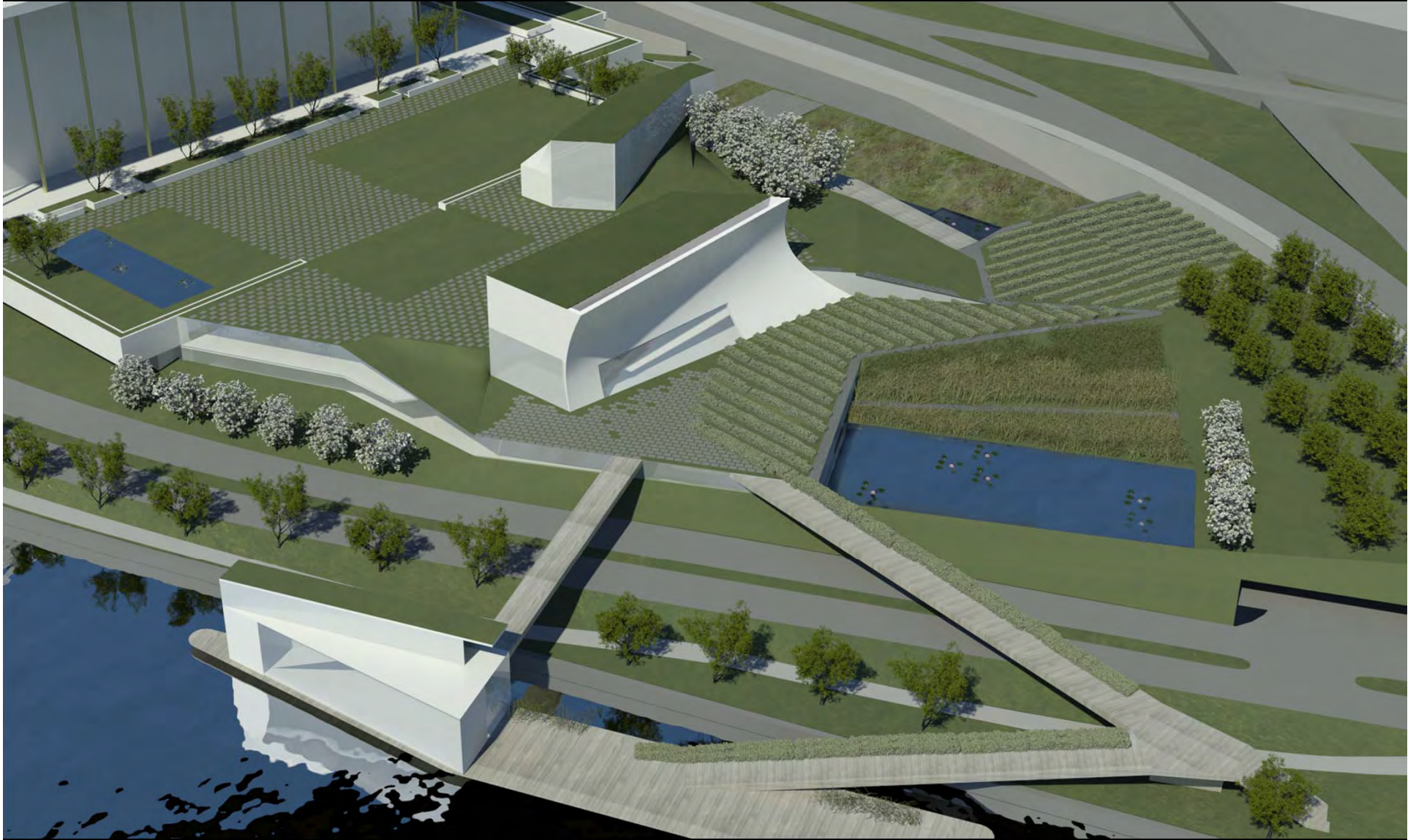




RATHER THAN AN object
 added to the center — it's a
 landscape of terraces moving
 toward the river and cascading
 over the highway to make the public
 waterfront connection — fulfill the original
 visions for the center.





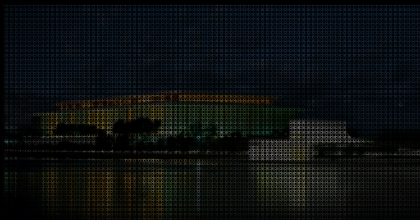


The John F. Kennedy Center for the Performing Arts Expansion

5 STRATEGIES



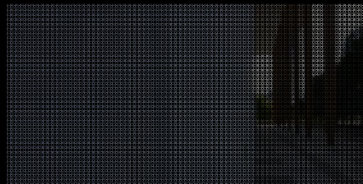
3 PAVILIONS: a) Entry Pavilion
b) Glissando Pavilion
c) Potomac Pavilion



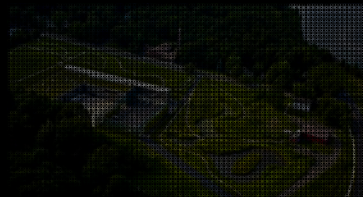
FUSION WITH LANDSCAPE AND RIVER



INSTRUMENT WITH NATURAL LIGHT

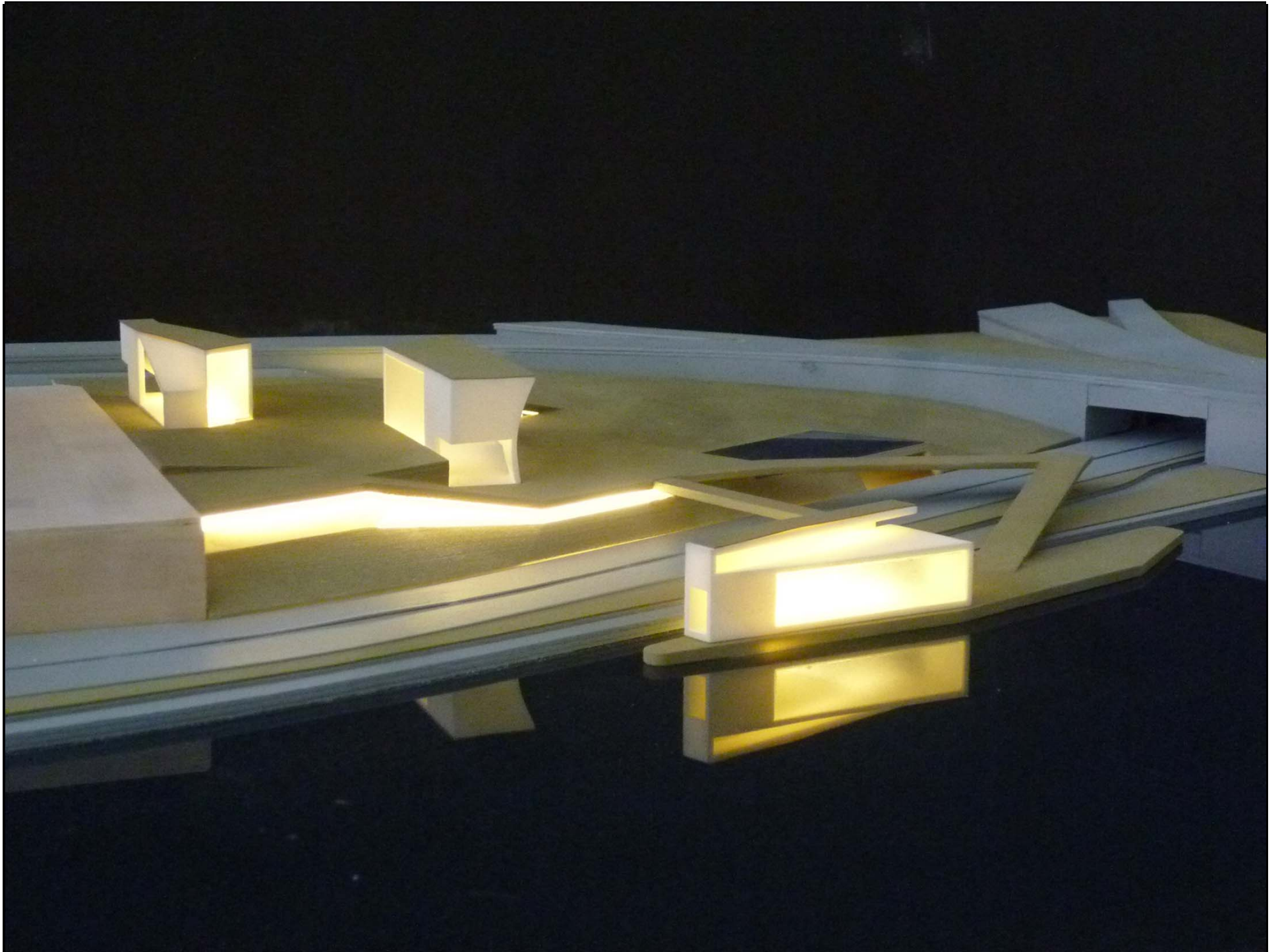


MATERIAL INNOVATION / RELATION



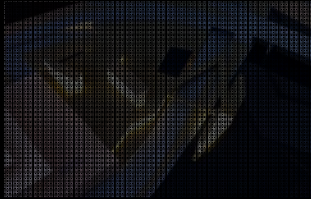
ECOLOGICAL INTEGRATION



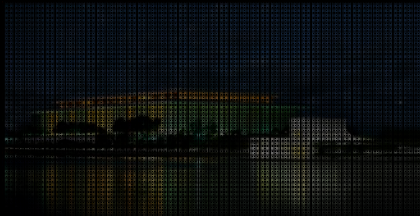


The John F. Kennedy Center for the Performing Arts Expansion

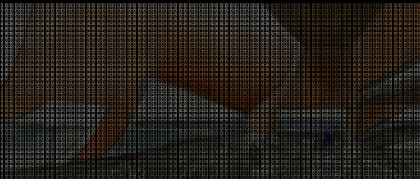
5 STRATEGIES



3 PAVILIONS: a) Entry Pavilion
b) Glissando Pavilion
c) Potomac Pavilion



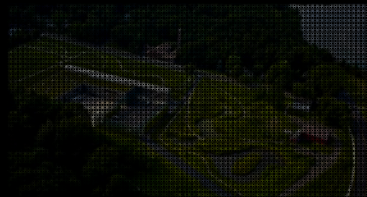
FUSION WITH LANDSCAPE AND RIVER



INSTRUMENT WITH NATURAL LIGHT

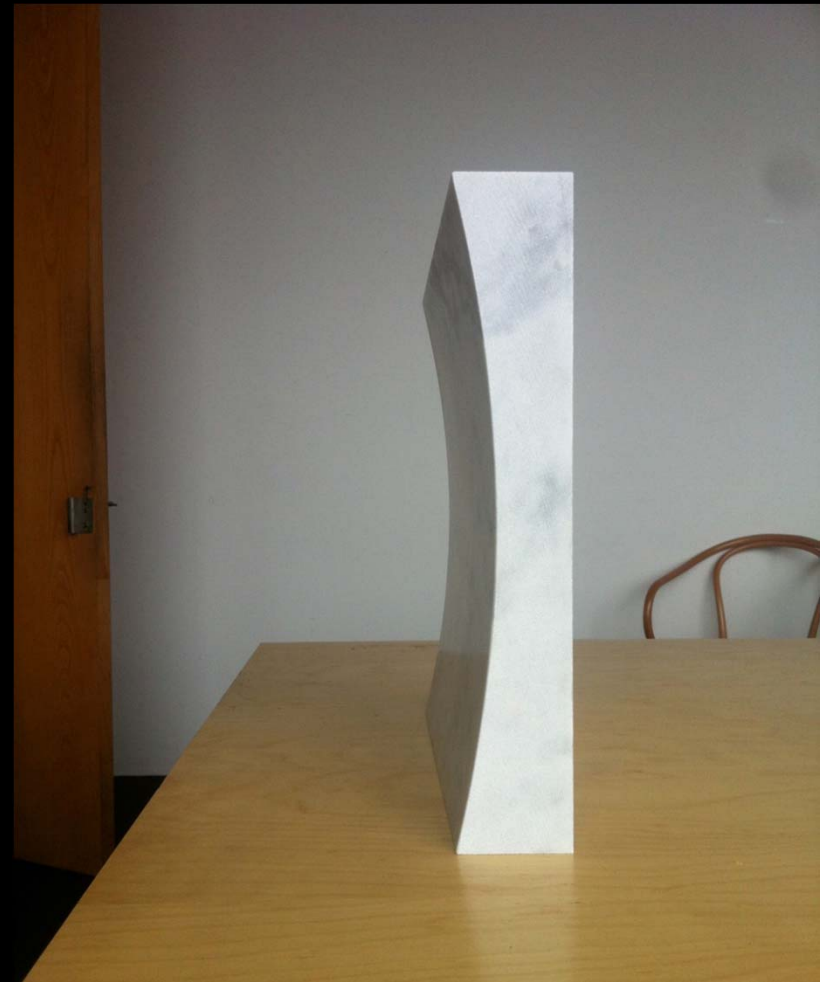


MATERIAL INNOVATION / RELATION



ECOLOGICAL INTEGRATION



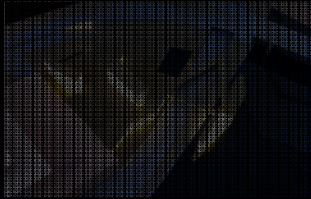




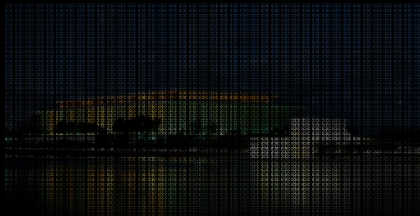


The John F. Kennedy Center for the Performing Arts Expansion

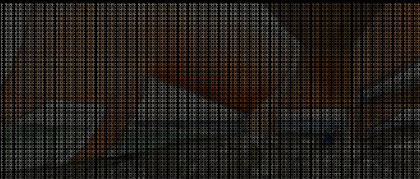
5 STRATEGIES



3 PAVILIONS: a) Entry Pavilion
b) Glissando Pavilion
c) Potomac Pavilion



FUSION WITH LANDSCAPE AND RIVER



INSTRUMENT WITH NATURAL LIGHT



MATERIAL INNOVATION / RELATION



ECOLOGICAL INTEGRATION

