

# KENNEDY CENTER EXPANSION PROJECT

## **Section 106 Consulting Parties Meeting**

September 17, 2013  
1:30-3:30 pm

## Project Purpose

The purpose of the project is to improve the facilities of the Kennedy Center by adding space for classrooms, rehearsal rooms, event spaces, and offices in a dedicated area resulting in expanded opportunities for the general public to enjoy and experience the performing arts.



## PROJECT OVERVIEW

- The Kennedy Center is a Congressionally-designated national showcase for the performing arts and a living memorial to President Kennedy.
- The Kennedy Center has a critical shortage of dedicated facilities to serve its existing and expanding programs. It contains no dedicated classrooms or event areas, a limited number of rehearsal rooms, and insufficient administrative space.
- The proposed expansion would be located south of the existing building on a site currently used for underground and above-grade parking.
- The expansion will be a fully integrated part of the Kennedy Center with convenient connections to existing facilities and the riverfront.
- S106 consultation was initiated with the DC Historic Preservation Office (DC HPO) on July 12, 2013.
- A NEPA public scoping meeting and S106 Consulting Parties Meeting #1 was held on July 22, 2013.



# Kennedy Center Expansion Project

Washington, DC

Section 106 Consulting Parties Meeting – September 17, 2013

## Project Area

The proposed expansion would be located south of the existing building on a site bound by the Potomac Expressway and ramp to Roosevelt Bridge on the southeast, the Potomac River on the west, and the south terrace of the Kennedy Center on the north.





## No Action Alternative



# Alternative 1A: Multiple Pavilions with River Pavilion and Bridge Crossing

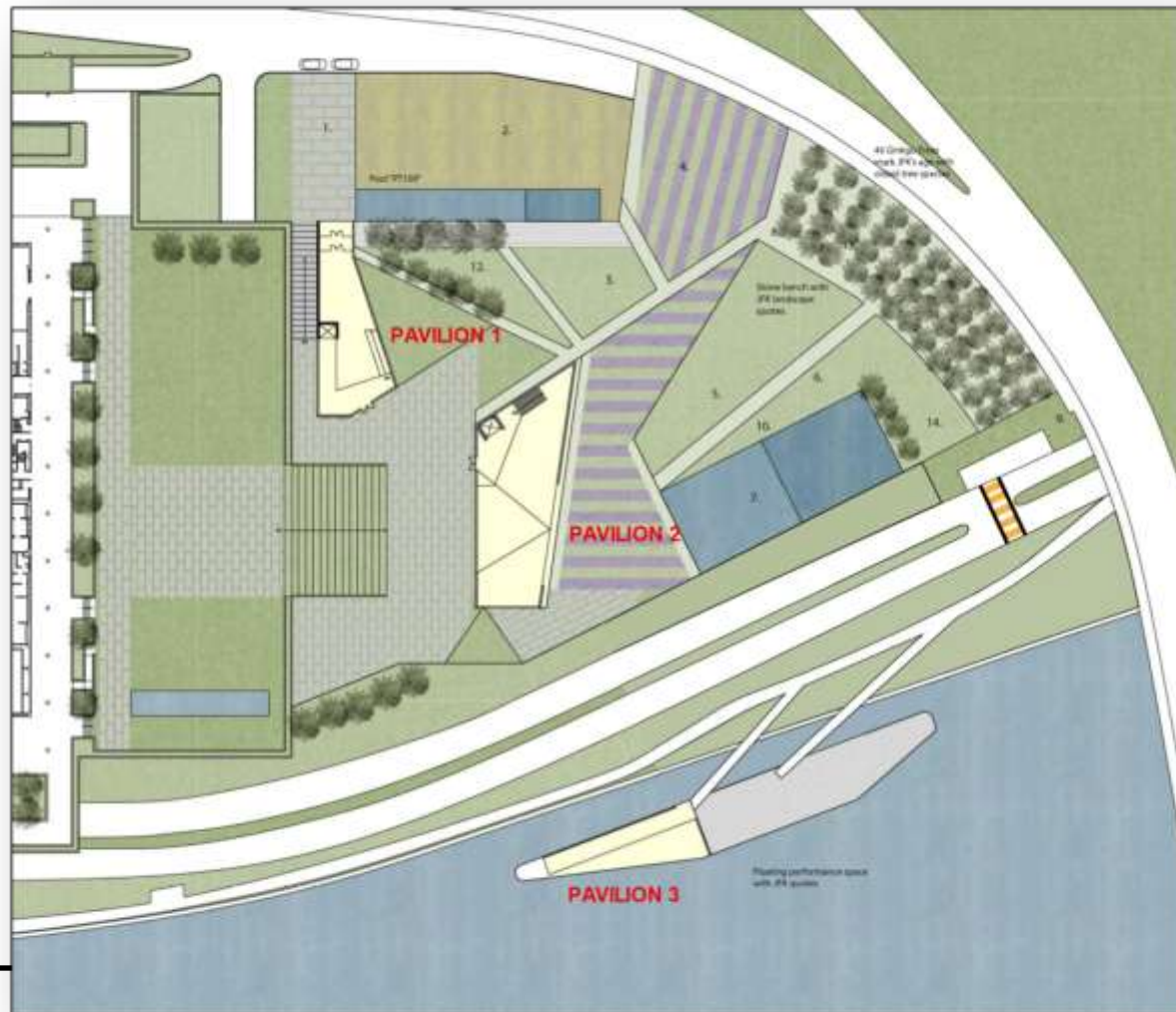


# Alternative 1A: Multiple Pavilions with River Pavilion and Bridge Crossing





## Alternative 1B: Multiple Pavilions with River Pavilion and At-Grade Crossing





## Alternative 2: Multiple Pavilions without River Pavilion



## Alternative 2: Multiple Pavilions without River Pavilion



# Kennedy Center Expansion Project

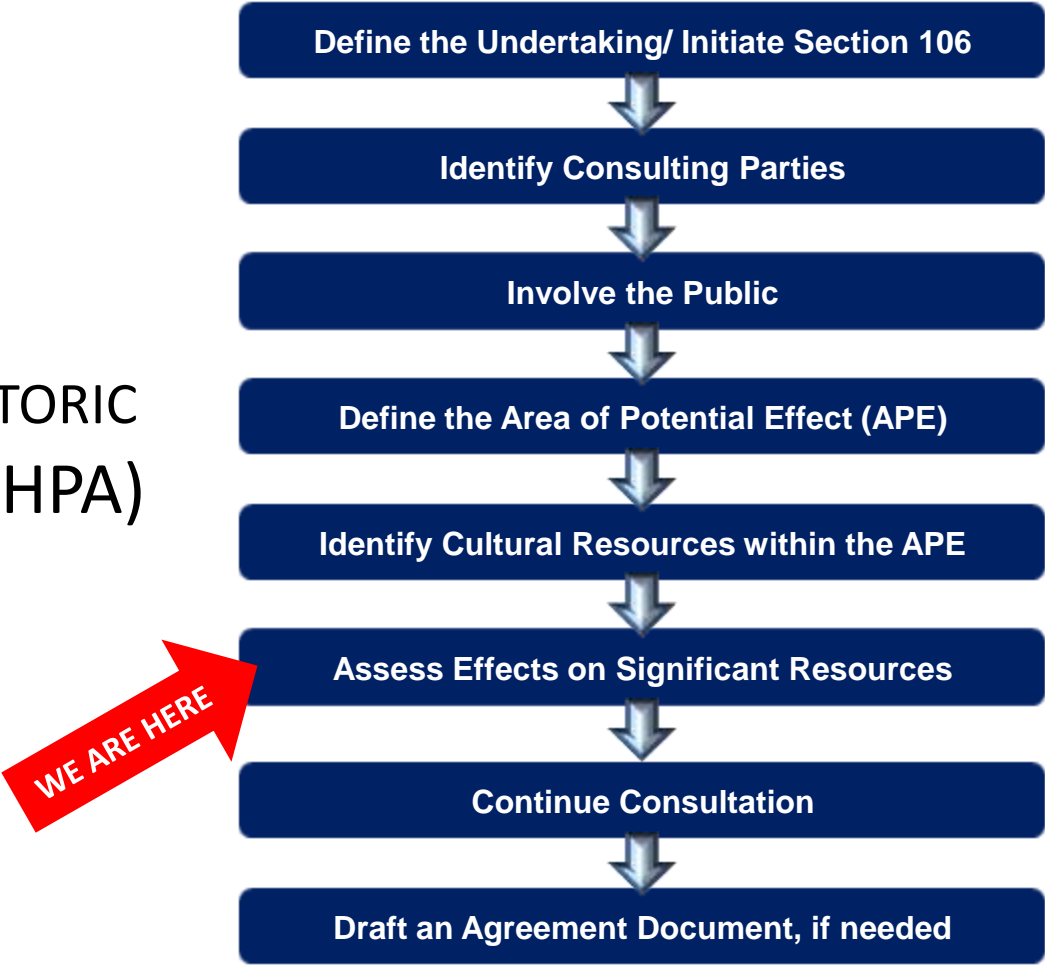
Washington, DC

Section 106 Consulting Parties Meeting – September 17, 2013



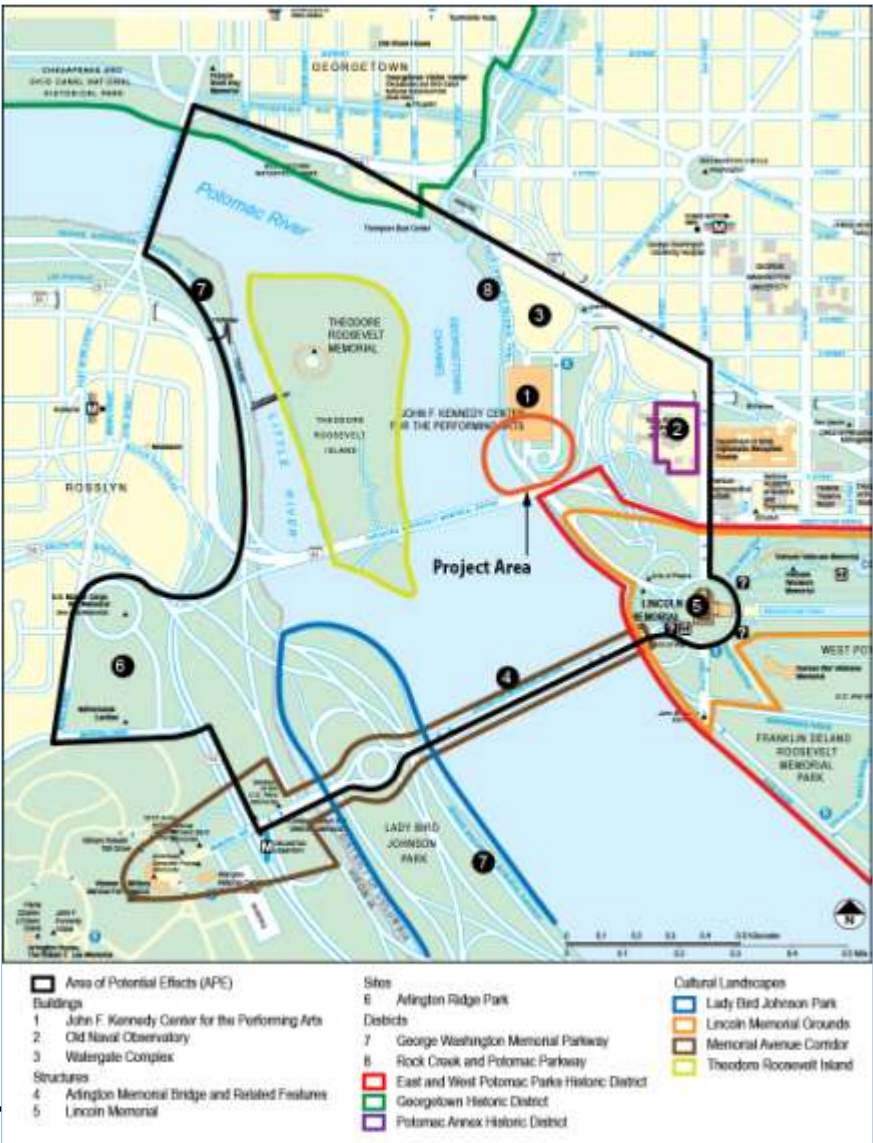


SECTION 106  
OF THE NATIONAL HISTORIC  
PRESERVATION ACT (NHPA)



# Area of Potential Effects (APE)

- BUILDINGS**
- 1 Kennedy Center
  - 2 Old Naval Observatory
  - 3 Watergate Complex
- STRUCTURES**
- 4 Arlington Memorial Bridge
  - 5 Lincoln Memorial
- SITES**
- 6 Arlington Ridge Park



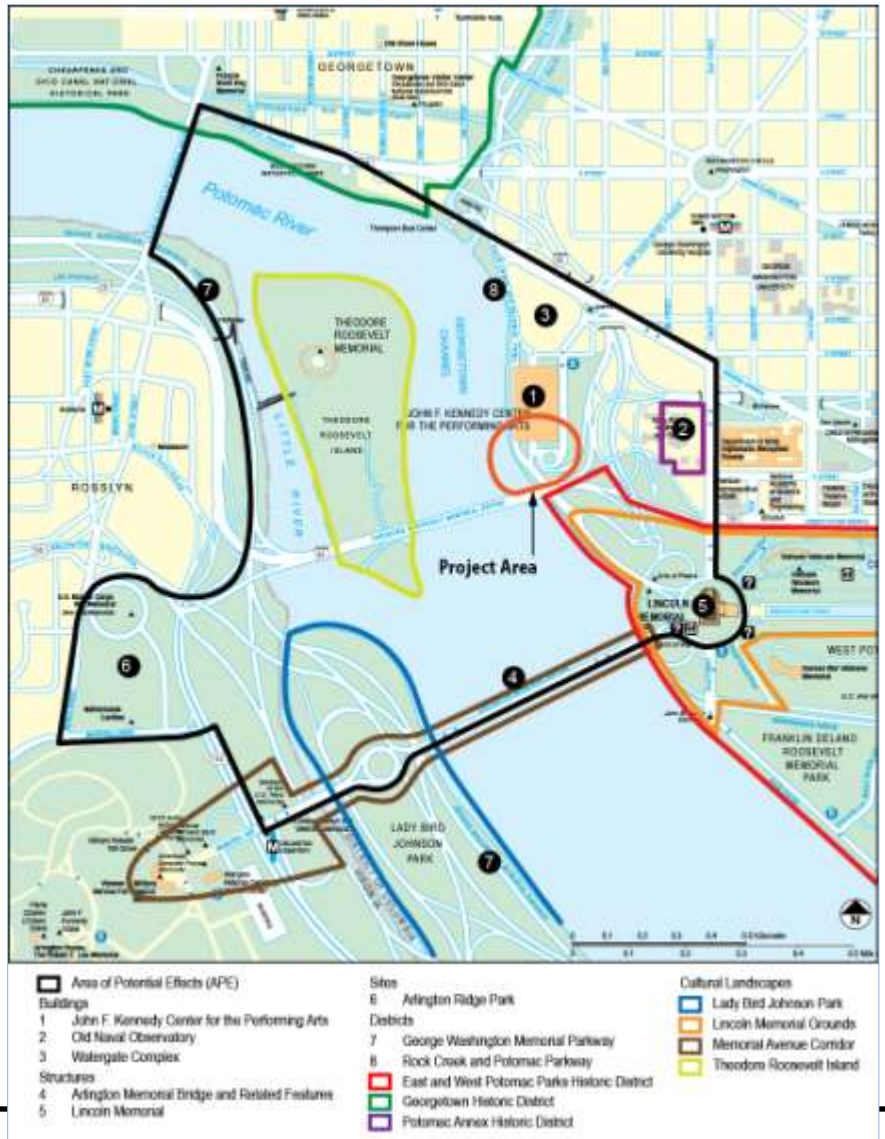
# Area of Potential Effects (APE)

## DISTRICTS

- 7 George Washington Memorial Parkway
- 8 Rock Creek and Potomac Parkway
- East & West Potomac Parks Historic District
- Georgetown Historic District
- Potomac Annex Historic District

## CULTURAL LANDSCAPES

- Lady Bird Johnson Park
- Lincoln Memorial Grounds
- Memorial Avenue Corridor
- Theodore Roosevelt Island





## Kennedy Center

The Kennedy Center was determined eligible for the National Register by the DC HPO on February 13, 2012, under:

- National Register Criteria B for properties associated with events that have made a significant contribution to the broad patterns of our history;
- National Register Criteria C for properties that embody the distinctive characteristics of a type, period, or method of construction, represent the work of a master, or possess high artistic values;
- Criteria Consideration F for commemorative properties; and
- Criteria Consideration G for properties that have achieved significance within the last 50 years.



## No Action Alternative



Criteria of Adverse Effect: An adverse effect is found when an undertaking may alter any of the characteristics of a historic property that qualify it for inclusion in the National Register in a manner that would diminish the integrity of the property.

The No Action Alternative would have *no adverse effect* on the historic properties within the APE.

[illegible]



# Kennedy Center Expansion Project

Washington, DC

Section 106 Consulting Parties Meeting – September 17, 2013

Under Alternative 1A, two resources within the APE would be directly affected:

- John F. Kennedy Center for the Performing Arts
- Rock Creek and Potomac Parkway



## Kennedy Center Character-Defining Features

- bilateral symmetry
- long, low horizontality
- organized, hierarchical facades
- clear, geometric form
- thin-clad marble curtain walls
- the size and location of the plaza-level glass curtain walls
- roof overhangs, including marble-paneled fascia
- peripteral columns
- engraved quotations and bronze wall signage
- stage access doors and the vertical paired openings in the north, south, and center bays of the east facade



## Kennedy Center Character-Defining Features

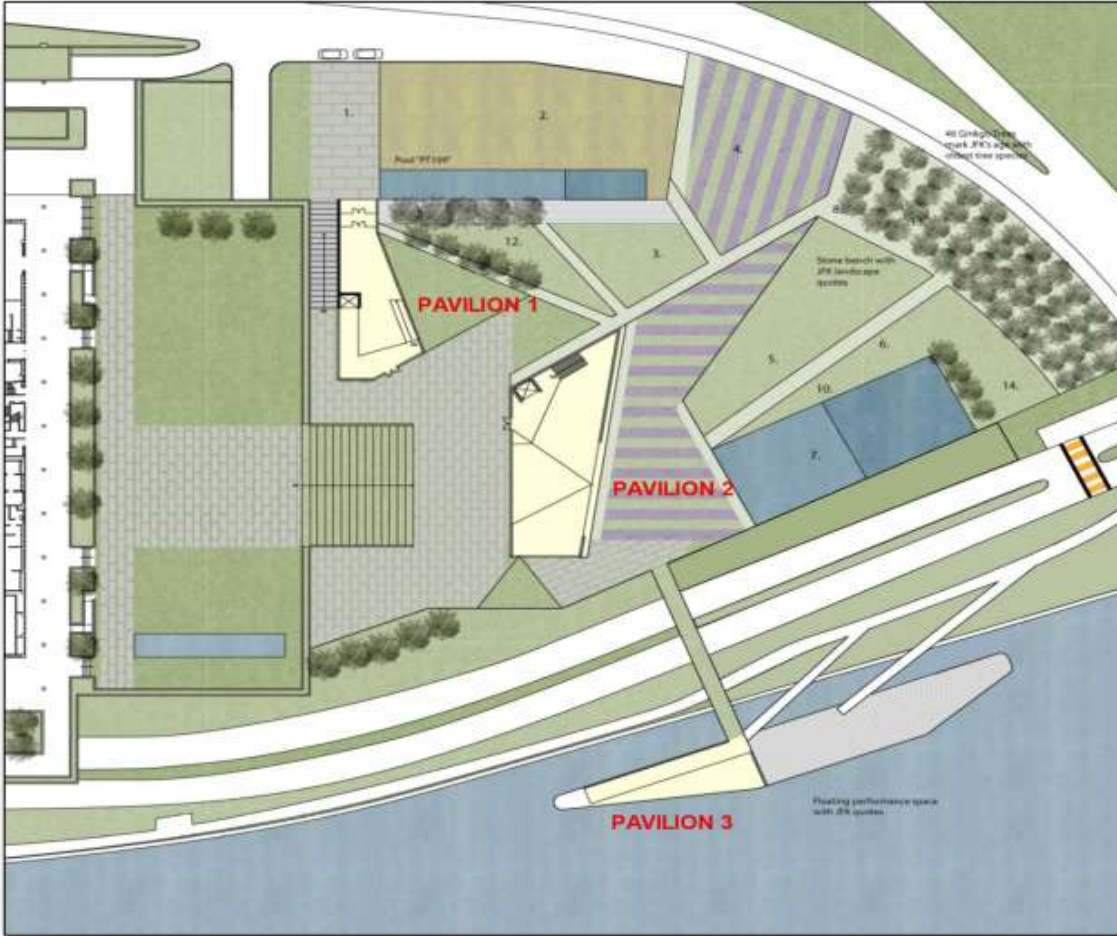
Contributing features of the terraces and Entrance Plaza include:

- the footprint and cantilevered structure of the West (River) Terrace
- the marble panels of the north, west, and south fascia of the West Terrace overhang
- the shape and location of the planting boxes and double row of willow trees of the West Terrace
- the shape and location of the water features of the West Terrace
- the size and location of the water features of the Entrance Plaza
- the Entrance Plaza public art

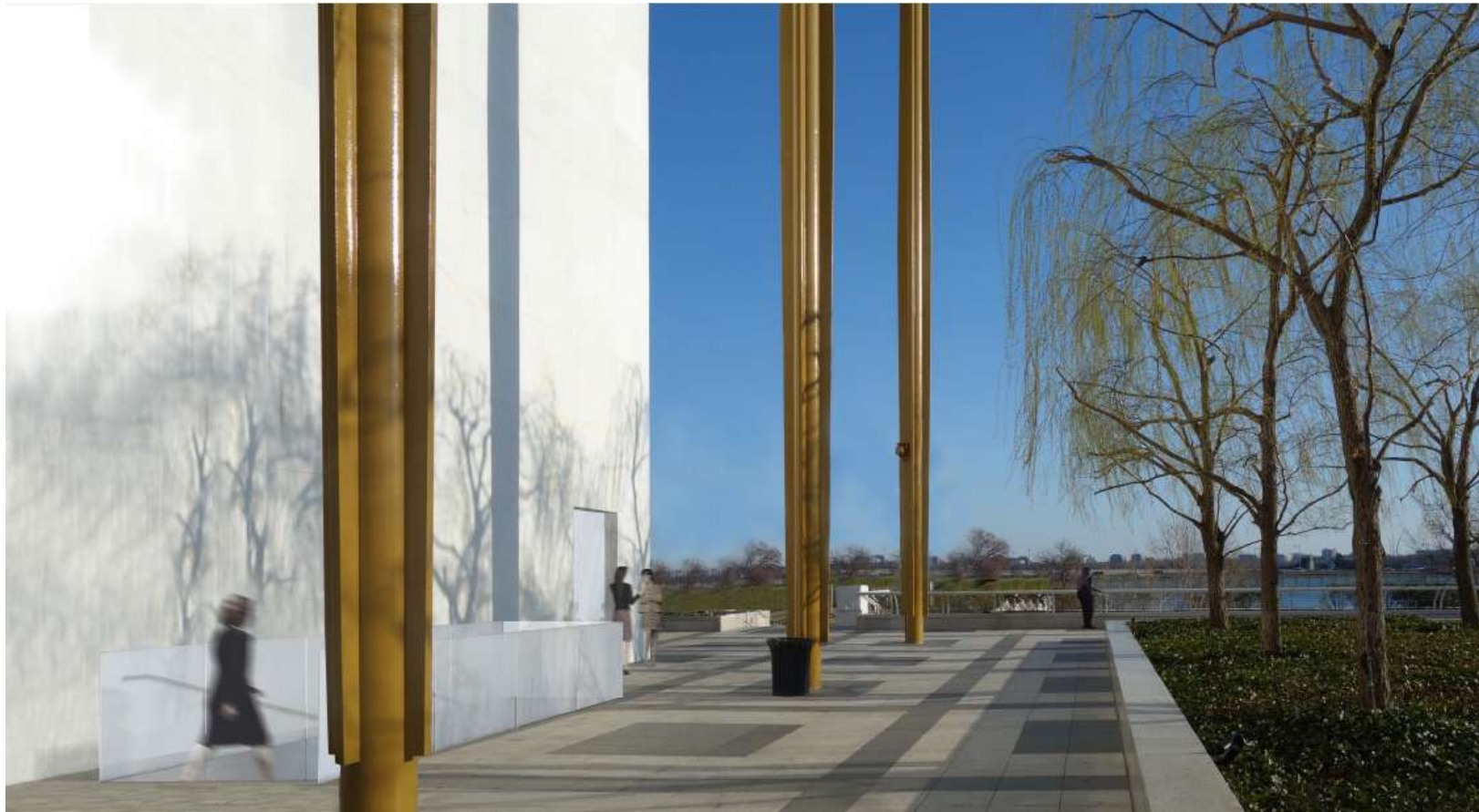




# Effects on the Kennedy Center



## Effects on the Kennedy Center





# Kennedy Center Expansion Project

Washington, DC

Section 106 Consulting Parties Meeting – September 17, 2013

## Effects on the Kennedy Center



## Rock Creek and Potomac Parkway Character-Defining Features within the APE

- Roadway
- Sycamore Allee
- Network of Trails (including the multi-use trail between the Roadway and the Potomac River)
- The Arts of Peace
- Millet lamp posts
- Stone Seawalls
- Rock Creek
- Chesapeake and Ohio Canal





## Effects on Rock Creek and Potomac Parkway

- River Pavilion and access bridge would block views and the increase tunnel effect along the Roadway
- Trail spurs to the River Pavilion would affect the perceived width and character of the trail at this point and would alter design elements such as the paving materials and landscaping
- River Pavilion trail spurs and access bridge would affect existing trees of the Sycamore Allee



# Kennedy Center Expansion Project

Washington, DC

Section 106 Consulting Parties Meeting – September 17, 2013

National Capital Planning Commission



# Kennedy Center Expansion Project

Washington, DC

Section 106 Consulting Parties Meeting – September 17, 2013

National Capital Planning Commission





# Kennedy Center Expansion Project

Washington, DC

Section 106 Consulting Parties Meeting – September 17, 2013

National Capital Planning Commission





# Kennedy Center Expansion Project

Washington, DC

Section 106 Consulting Parties Meeting – September 17, 2013

National Capital Planning Commission



# Kennedy Center Expansion Project

Washington, DC

Section 106 Consulting Parties Meeting – September 17, 2013

National Capital Planning Commission





# Kennedy Center Expansion Project

Washington, DC

Section 106 Consulting Parties Meeting – September 17, 2013

National Capital Planning Commission



# Kennedy Center Expansion Project

Washington, DC

Section 106 Consulting Parties Meeting – September 17, 2013

National Capital Planning Commission





# Kennedy Center Expansion Project

Washington, DC

Section 106 Consulting Parties Meeting – September 17, 2013

National Capital Planning Commission



## Alternative 1A: Summary of Effects

- adverse effect on the Kennedy Center
- adverse effect on the Rock Creek and Potomac Parkway
- adverse effect on views and vistas from Arlington Memorial Bridge, Lady Bird Johnson Park, the George Washington Memorial Parkway, and the Memorial Avenue Corridor



## Effects on Rock Creek and Potomac Parkway

- River Pavilion would block views along the Roadway
- Trail spurs to the River Pavilion would affect the perceived width and character of the trail at this point and would alter design elements such as the paving materials and landscaping
- River Pavilion trail spurs would affect existing trees of the Sycamore Allee





## Alternative 1B: Summary of Effects

- adverse effect on the Kennedy Center
- adverse effect on the Rock Creek and Potomac Parkway
- adverse effect on views and vistas from Arlington Memorial Bridge, Lady Bird Johnson Park, George Washington Memorial Parkway, and the Memorial Avenue Corridor

## Alternative 2: Multiple Pavilions without River Pavilion

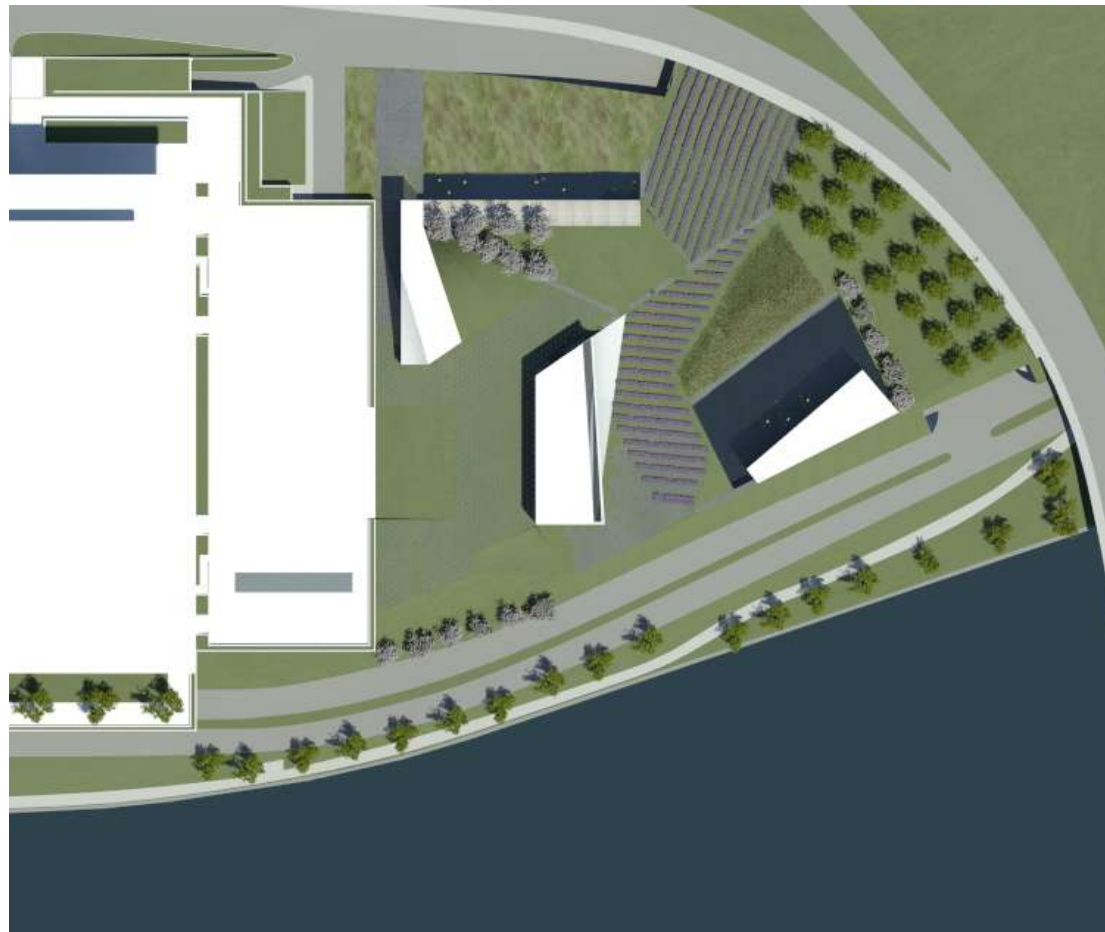


## Alternative 2: Multiple Pavilions without River Pavilion





## Effects on the Kennedy Center



# Kennedy Center Expansion Project

Washington, DC

Section 106 Consulting Parties Meeting – September 17, 2013

National Capital Planning Commission



## Alternative 2: Summary of Effects

- adverse effect on the Kennedy Center
- no adverse effect on the Rock Creek and Potomac Parkway
- adverse effect on views and vistas from the George Washington Memorial Parkway and Lady Bird Johnson Park



## Questions/Comments and Next Steps

- post presentation materials to NPS Planning, Environment and Public Comment (PEPC) site and collect public comments via:  
<http://parkplanning.nps.gov/NAMA>
- complete Section 106 Assessment of Effects Report and NEPA Environmental Assessment
- Consulting Parties Meeting #3 to discuss mitigation and MOA