



Replacement of Administrative Facilities at Stehekin

Lake Chelan National Recreation Area

Public Scoping Workshop
June 2013



Purpose

To provide essential, cost-effective and sustainable maintenance, fire operations, solid waste operations, and housing critical to LACH operations outside of environmentally sensitive areas.





Need for Action



- Facilities need to be removed from Stehekin River's floodplain.
- Aging facilities are inefficient to operate and maintain.
- Solid waste disposal is not in compliance. NPS cannot continue to subsidize.



Overview of Proposed Action

- Relocate maintenance and fire facilities.
- Relocate one NPS single-family house.
- Improve solid waste disposal and recycling facilities.
- Come into compliance with federal regulations





Issues

- Flood-related damage to structures
- Construction impacts to soils, landforms, vegetation
- Visual, dust, noise, and light impacts
- Structure design, impacts to views
- Septic, hazardous materials in flood-prone areas
- Economic benefits from construction contracts





Issues

- Safety concerns near airstrip
- Existing facilities in poor condition, inefficient to operate, costly to maintain
- Fire operations hampered by inadequate facilities
- Wildlife may be attracted to garbage
- Improved recycling and solid waste transfer station needed
- Cost recovery may impose financial burden





Generator	Percent of Total Trash Volume	Cost (\$/year, in FY 2010)
NPS	19.7%	\$18,198.53
Stehekin Lodge and Resort	22.1%	\$20,415.61
Stehekin Valley Ranch	11.6%	\$10,715.89
Stehekin Pastry Co.	11.9%	\$10,993.02
Other Businesses	0.1%	\$92.38
Private Residents	34.6%	\$31,962.90
Total	100%	\$92,378.32

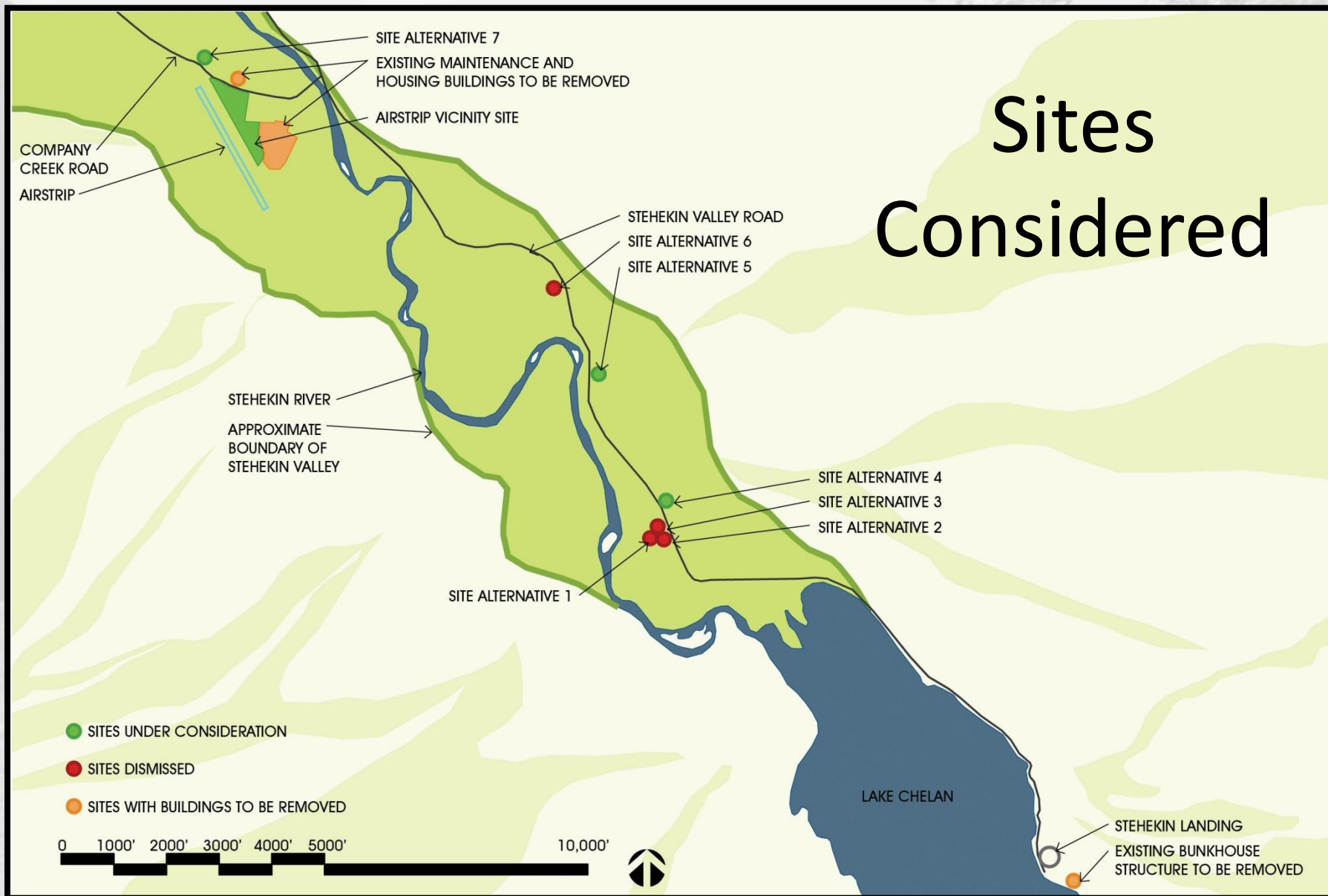


Proposed Housing Site Options

- Four locations preliminarily identified per following criteria:
 - Out of CMZ
 - Within 200' of existing utility lines and roads
 - Minimize wildlife habitat fragmentation by concentrating development
 - Use underground utility lines and existing wells

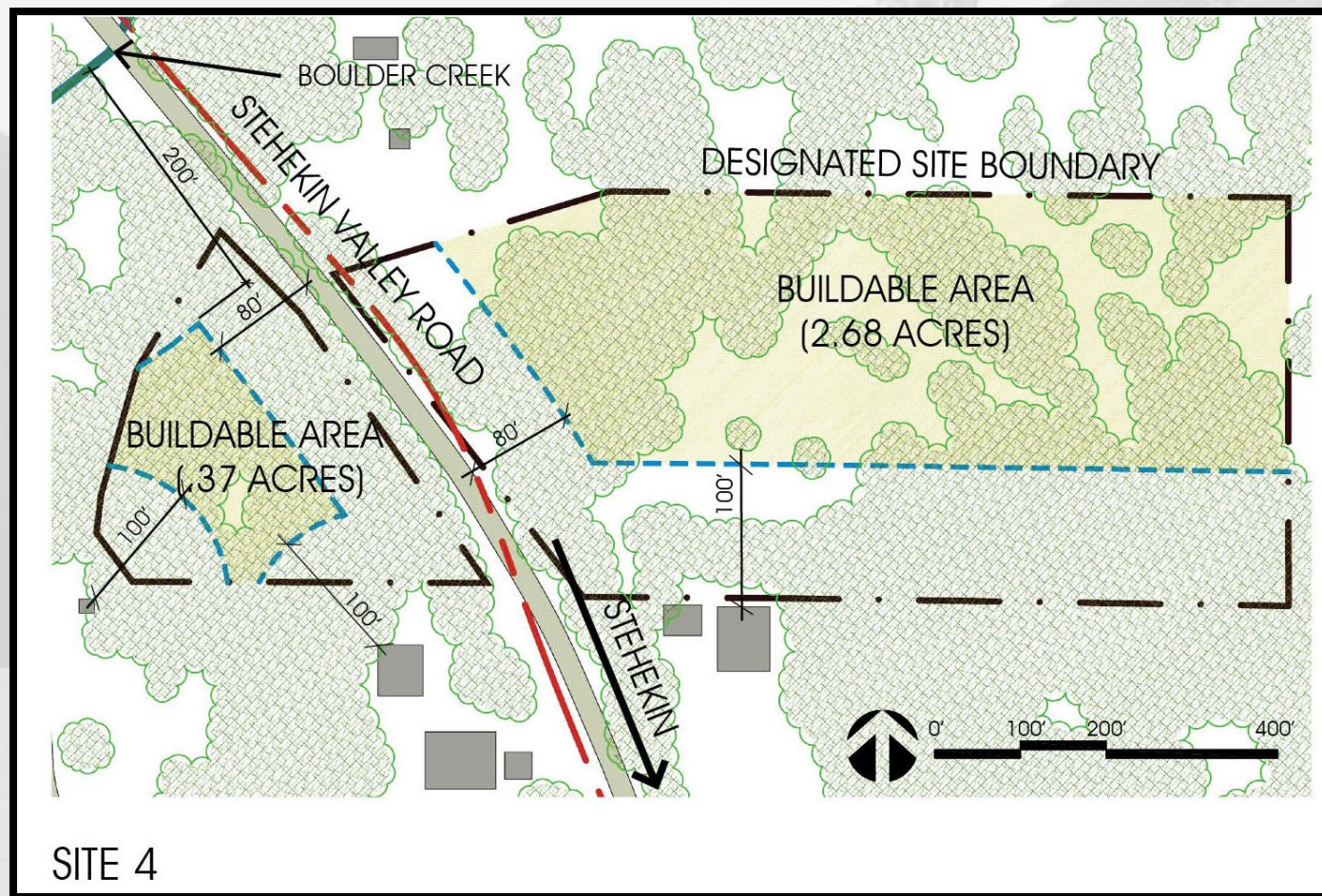


Sites Considered





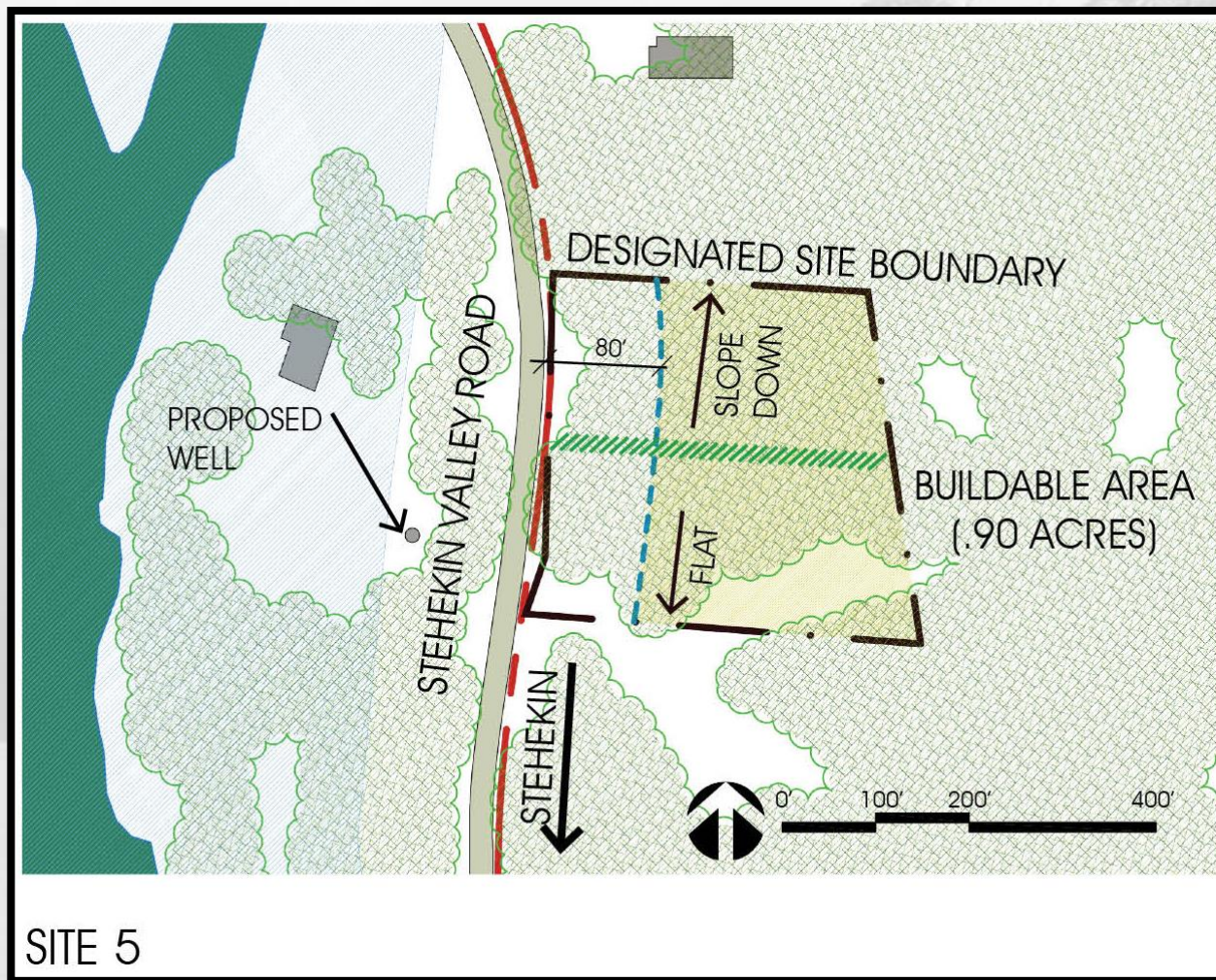
Site 4



**Site
Acreage:
5.3 acres**



Site 5



Site
Acreage:
1.29 acres



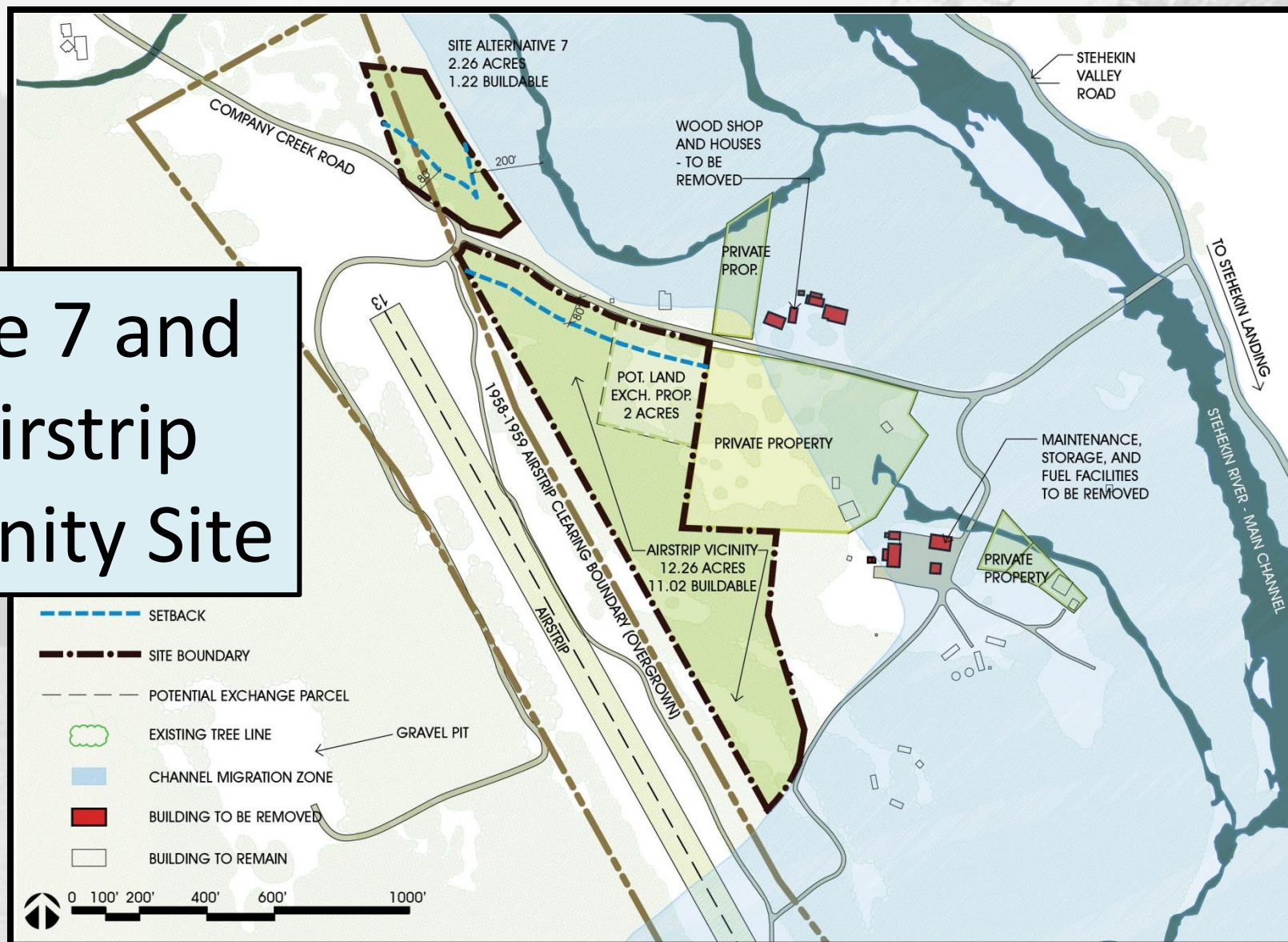
Proposed Maintenance Facility Location

- Adjacent to airstrip
- Existing buildings would be razed and sites rehabilitated





Site 7 and Airstrip Vicinity Site





Next Steps

- June/July 2013: Public scoping
- Fall – Winter 2013: Alternatives development
- Fall 2013 – Summer 2014: Prepare EA
- Summer 2014: Release EA for public review and comment
- Fall 2014: Analyze comments, prepare decision document
- Implement as funding allows



What do YOU think?

<http://parkplanning.nps.gov/noca>



Cost Category	Cubic yards	Cost (\$/year, in FY 2010)
Contracted Transport and Disposal Compacted Garbage	428	\$ 31,487.44
Contracted Transport and Disposal Loose Garbage	311	\$ 15,318.44
Contracted Transport and Disposal Recycled Materials	95	\$ 4,149.24
C&D Debris Hauling	150	\$ 5,977.75
Contracted Materials Hauling		\$ 556.88
Subtotal Contract Costs		\$ 57,489.75
C&D Debris Disposal	150	\$ 6,193.65
Labor Hours		\$ 33,733.24
Materials (Trash boxes, bags)		\$ 6,439.92
Disposal of Hazardous Materials		\$ 1,336.29
Utilities		\$ 1,172.34
Total Costs		\$ 106,365.19
Notes: All costs provided by Park staff, based on contractor invoices, Park purchasing invoices, utility meters and staff labor charges.		