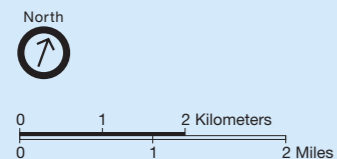
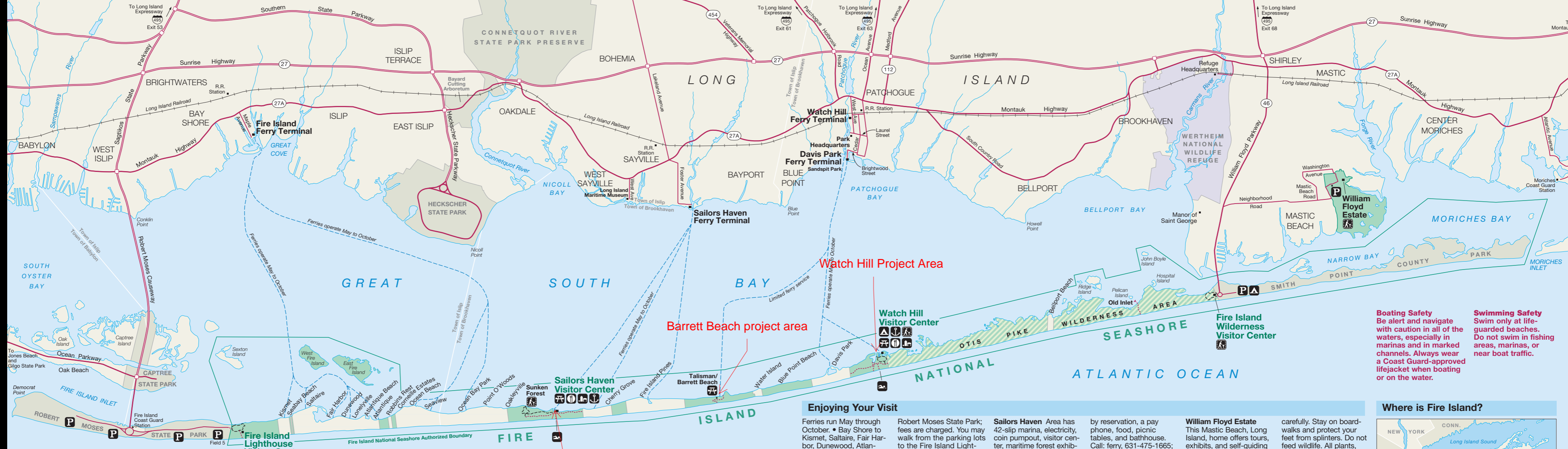


# Exploring Fire Island



- |                               |                       |                              |                                      |                      |
|-------------------------------|-----------------------|------------------------------|--------------------------------------|----------------------|
| Fire Island National Seashore | Lifeguarded swim area | Danger                       | Port (left) buoy odd-numbered        | Small craft advisory |
| Wilderness area               | Store                 | Boats keep out               | Starboard (right) buoy even-numbered | Gale warning         |
| Self-guiding nature trail     | Marina                | Area controlled as indicated | Diver in water                       | Storm                |
| Trail                         | Parking               |                              |                                      | Hurricane            |
|                               | Picnic area           |                              |                                      |                      |
|                               | Campground            |                              |                                      |                      |

## Enjoying Your Visit

Ferries run May through October. • Bay Shore to Kismet, Saltaire, Fair Harbor, Dunewood, Atlantique, Ocean Beach, Sea-view, and Fire Island Pines. • Patchogue to Watch Hill, Davis Park, and Barrett Beach.

Robert Moses State Park; fees are charged. You may walk from the parking lots to the Fire Island Lighthouse and Fire Island Wilderness visitor centers. There are no public roads. Most boardwalk trails, some camping, and parking are accessible for disabled persons. Off-season services are limited.

**Sailors Haven** Area has 42-slip marina, electricity, coin pumpout, visitor center, maritime forest exhibits, Sunken Forest self-guiding trail, pay phone, food, picnic tables, and bathhouse. Call: ferry, 631-589-8980; marina, 631-597-6171; visitor center, 631-597-6183.

**Watch Hill** Area has 188-slip marina, coin pump-out, 50-amp electricity, visitor center, salt marsh and tidal estuary programs, self-guiding nature walks, limited canoe trips, family and group camping

by reservation, a pay phone, food, picnic tables, and bathhouse. Call: ferry, 631-475-1665; marina, 631-289-4810; camping, 631-289-4810; visitor center, 631-597-6455.

**Fire Island Wilderness** Area offers visitor center (seasonal), exhibits on the wilderness and its biodiversity, self-guiding trails, and hunting and off-road vehicle permits (seasonal). No parking. Call: 631-281-3010.

**William Floyd Estate** This Mastic Beach, Long Island, home offers tours, exhibits, and self-guiding tours of 12 outbuildings and the cemetery. Call: 631-399-2030.

**Playing it Safe** Children on docks should wear lifebelts or jackets. Use sunscreen. Poison ivy flourishes here: its 3-leaflets, vines, and roots can cause allergic reaction. Mosquitos are abundant, and ticks carrying Lyme disease are common; wear insect repellent and inspect yourself

Railroad stations are near 3 ferry terminals. When on Fire Island water taxis can shuttle you from point to point. Vehicle access and parking are limited to Smith Point County Park (call: 631-854-4949) and

Fire Island Lighthouse Walk to the visitor center and maritime museum for interpretive programs, tower tours by reservation, and exhibits. Call: 631-661-4876.

by reservation, a pay phone, food, picnic tables, and bathhouse. Call: ferry, 631-475-1665; marina, 631-289-4810; camping, 631-289-4810; visitor center, 631-597-6455.

**Fire Island Wilderness** Area offers visitor center (seasonal), exhibits on the wilderness and its biodiversity, self-guiding trails, and hunting and off-road vehicle permits (seasonal). No parking. Call: 631-281-3010.

**William Floyd Estate** This Mastic Beach, Long Island, home offers tours, exhibits, and self-guiding tours of 12 outbuildings and the cemetery. Call: 631-399-2030.

**Playing it Safe** Children on docks should wear lifebelts or jackets. Use sunscreen. Poison ivy flourishes here: its 3-leaflets, vines, and roots can cause allergic reaction. Mosquitos are abundant, and ticks carrying Lyme disease are common; wear insect repellent and inspect yourself

carefully. Stay on boardwalks and protect your feet from splinters. Do not feed wildlife. All plants, animals, and natural features are protected by law. Stay off the dunes; their fragile vegetation protects the island. In an emergency, call a ranger, marine police, or 911.

**More Information** Fire Island National Seashore 120 Laurel Street Patchogue, NY 11772-3596 631-289-4810 www.nps.gov/fiis

**Boating Safety** Be alert and navigate with caution in all of the waters, especially in marinas and in marked channels. Always wear a Coast Guard-approved lifejacket when boating or on the water.

**Swimming Safety** Swim only at life-guarded beaches. Do not swim in fishing areas, marinas, or near boat traffic.

## Where is Fire Island?



This thin New York island stretches 32 miles along Long Island's south shore, from Moriches Inlet on the east to Democrat Point on the west. It forms a barrier between Great South Bay and the Atlantic Ocean. It supports a state park, a

county park, the national seashore, communities, and a seven-mile stretch that is the only federal wilderness area in New York state.

©GPO 2008-320-369/000xx Reprint 2006 Printed on recycled paper.