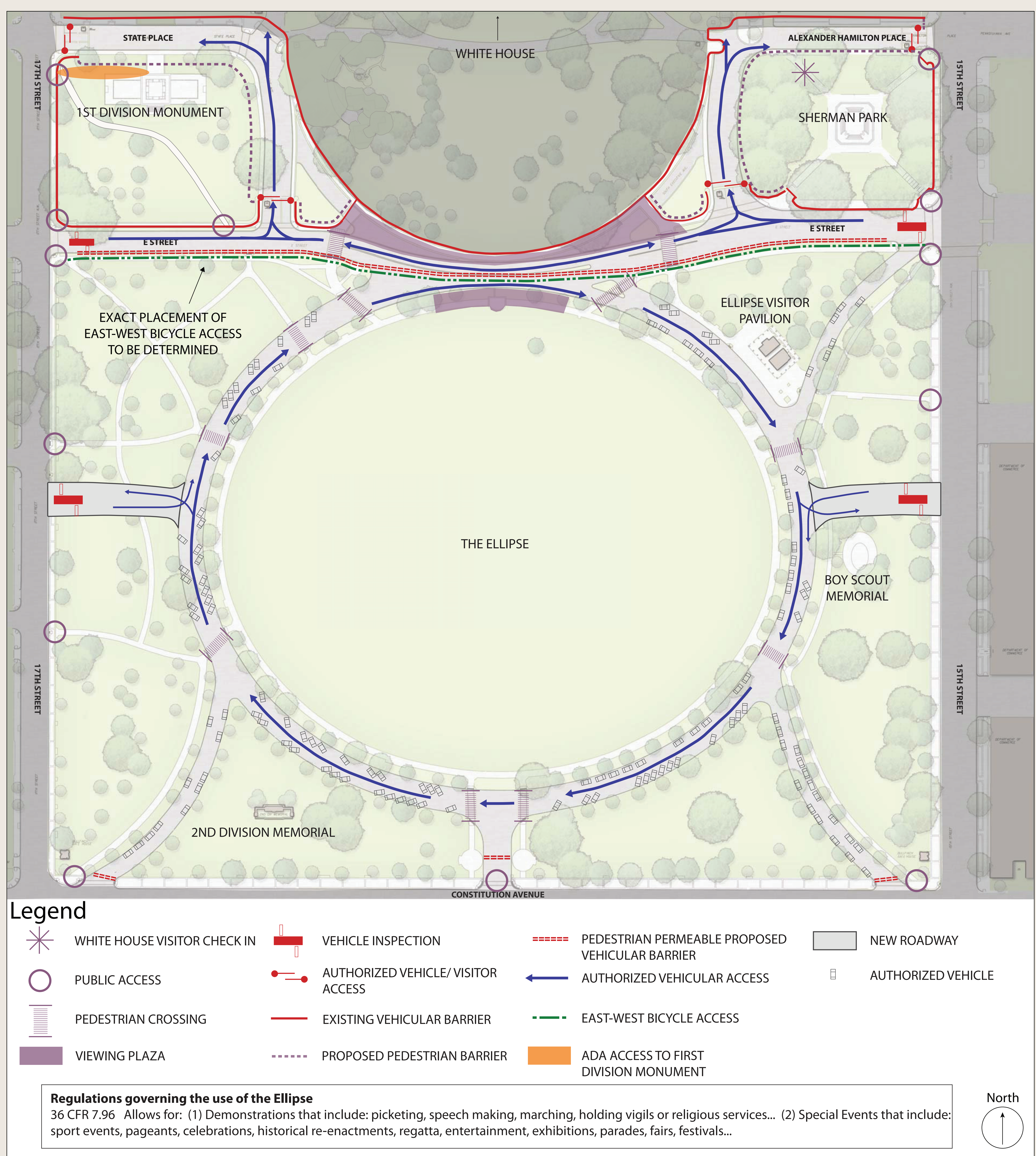


# Draft Alternative 2

## DRAFT ALTERNATIVE 2

PROPOSES NEW SECURITY ELEMENTS AND IMPROVEMENTS TO ENHANCE THE AESTHETICS AND SECURITY OF THE AREA.

- EXPANDED VIEWING AREAS FOR THE PUBLIC SOUTH OF THE WHITE HOUSE FENCE AND AT THE ZERO MILESTONE.
- PROVIDE BIKE ACCESS ALONG E STREET.
- AESTHETICALLY IMPROVED VEHICULAR CHECK POINTS AT 15TH AND E STREETS, AND 17TH AND E STREETS.
- ADD CHECK POINTS TO 15TH STREET AND 17TH STREET FOR VEHICLES ENTERING THE ELLIPSE.
- REMOVE VEHICULAR CHECK POINT AT 16TH STREET AND CONSTITUTION AVENUE.
- ADD A PERMANENT VEHICULAR BARRIER ON THE SOUTH SIDE OF E STREET.



## President's Park South Project



U.S. DEPARTMENT OF THE INTERIOR  
NATIONAL PARK SERVICE



U.S. DEPARTMENT OF HOMELAND SECURITY  
UNITED STATES SECRET SERVICE