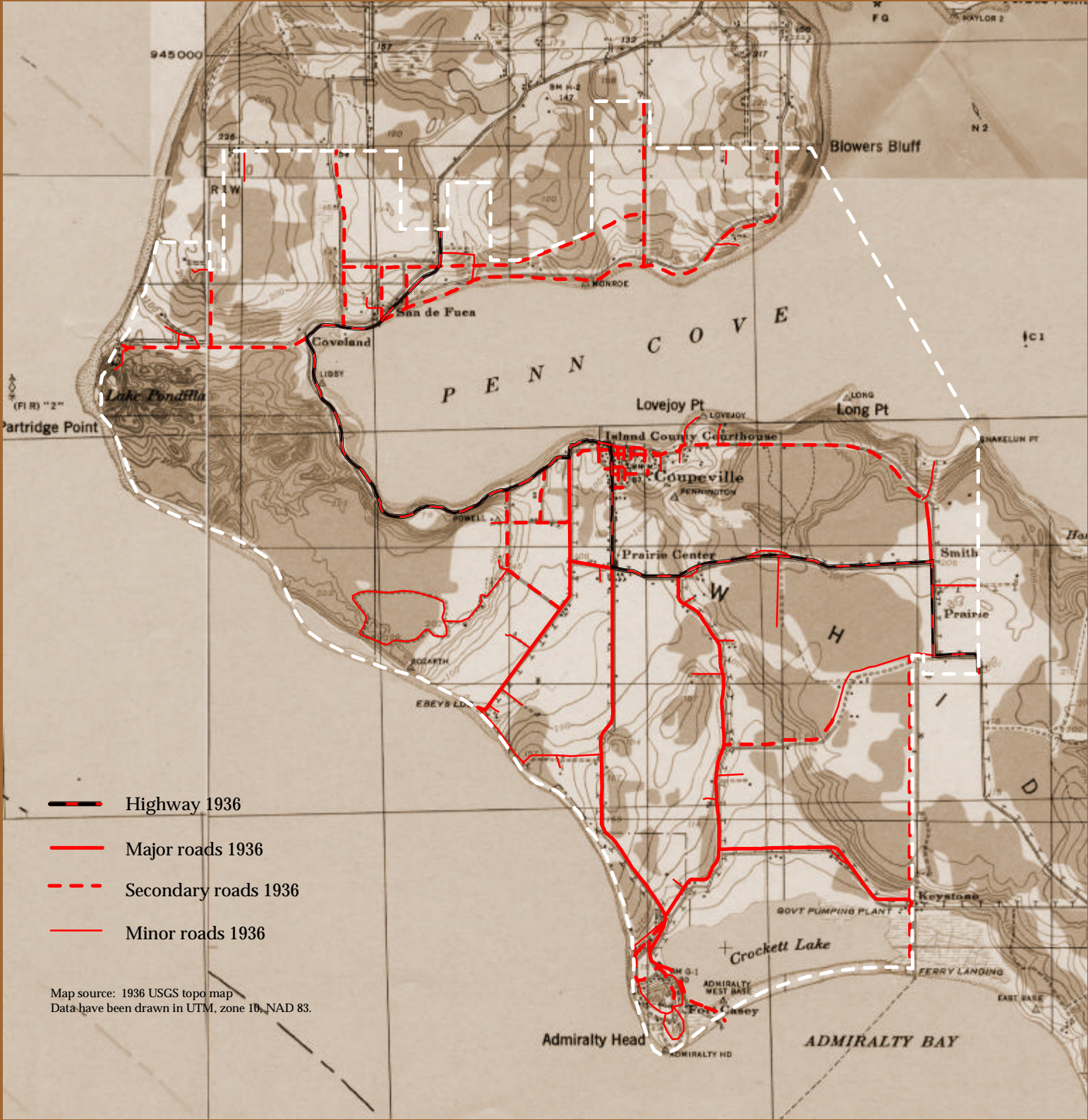


Historic Circulation

Roads Remaining from pre-1950

Historic Changes from pre-1950 to 2000



Seven of the Reserve's primary roads were in place by 1870, linking the settlers with Coupeville, the County Seat, the markets on Penn Cove, and each other. Within a few years, additional roads were added as the upland areas were settled and Fort Casey was constructed on the south end of the island. By 1899, this system of roads was in place. Today they continue to function as the primary circulation network through the Reserve.



Ebey's Landing National Historical Reserve

Figure 10a

Historic Circulation

Gains



Historic Changes from pre-1950 to 2000

The most remarkable change in Reserve circulation is the addition of roads. Many of these roads connect residential properties to major roads. Other significant changes include the addition of a road through the western woodland and along Keystone Spit.

Almost all pre-1950 roads still exist. One of the most significant transitions in use of these historic routes concerns the highway. The old highway became Madrona Way, while the new highway was built more inland to handle the increase in traffic. Because all the major historic roads still exist today, pre-1950 circulation has retained integrity.



Ebey's Landing National Historical Reserve