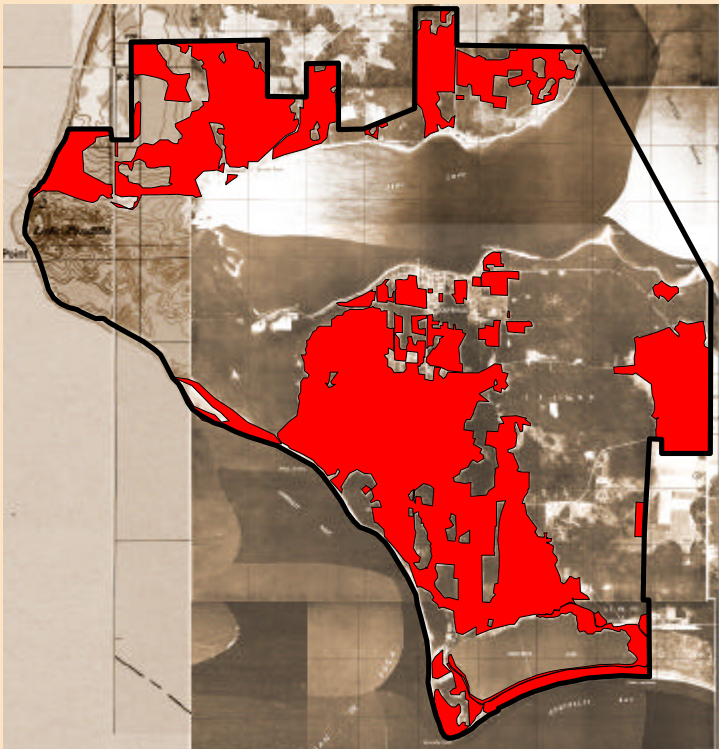


Historic Vegetation

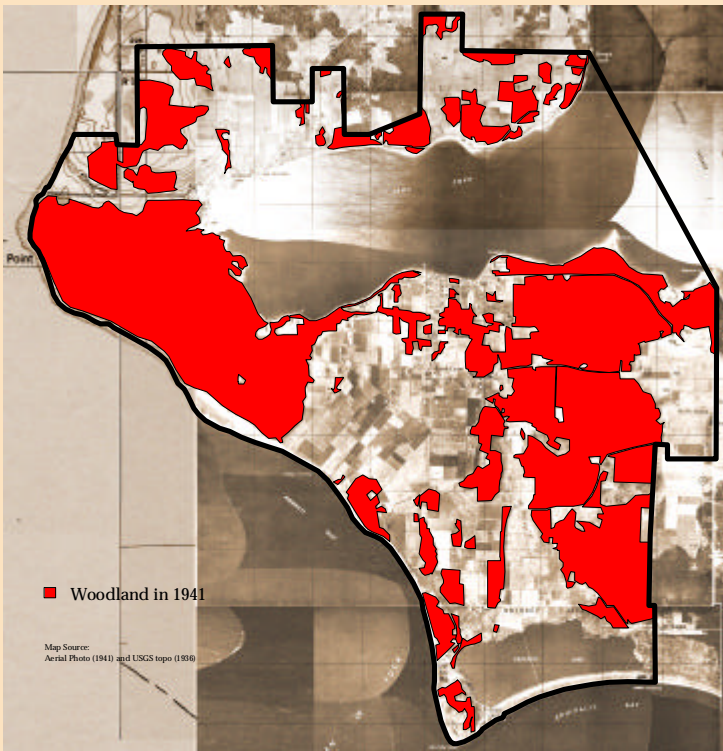
Historic Changes from pre-1950 to 2000

Pre-1950

Open Fields



Woodland



Wetlands*



Historic vegetation has been categorized as open fields (pasture, cropland, and grassland), woodland, and wetlands.

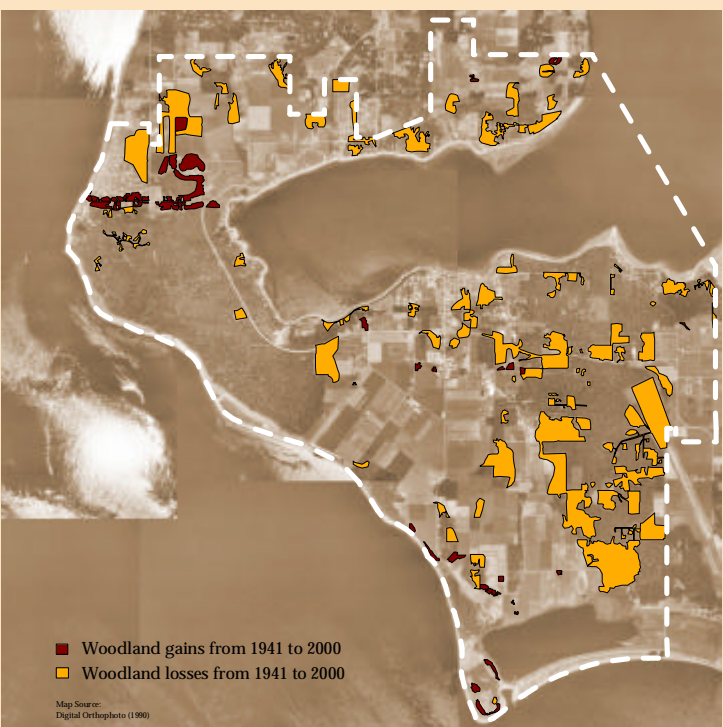
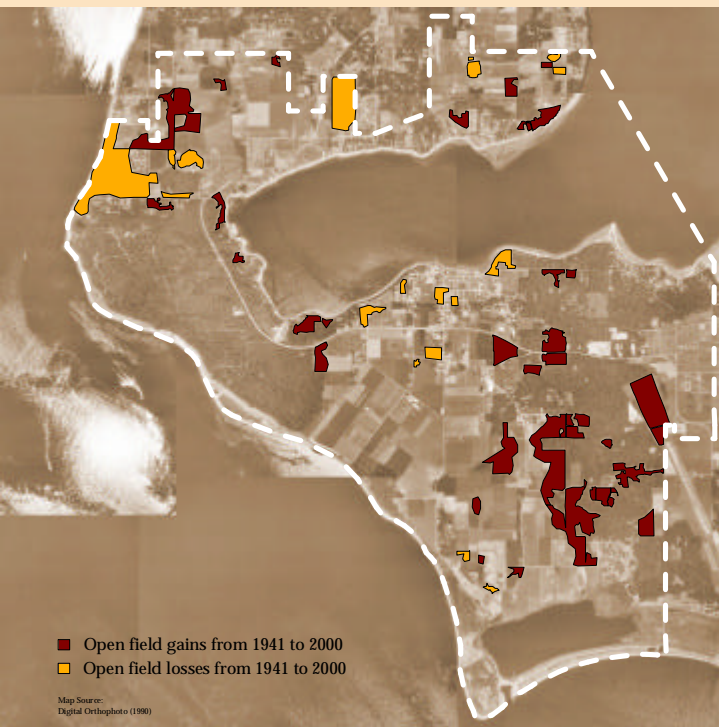


Conservation of Historic Vegetation

The areas of open field, woodland, and wetland that have remained intact since historic times are highlighted in red.

* Wetland analysis methods and categorization varies between years and therefore actual changes in wetlands cannot be reliably shown.

Changes



Changes in Historic Vegetation

While the majority of the vegetation has been conserved since 1941, some changes have occurred. Some open fields have been converted to residential subdivision or urban use, while new open fields have been converted from woodland. Some woodland has also been lost for residential development and for uses such as the airfield in Smith Prairie. Significant wetlands still exist around Crockett Lake and Perego Lagoon.

Ebey's Landing National Historical Reserve

Figure 9