

Historic Land Use
Agriculture and Woodland

Pre-1950



Agriculture

Agricultural use has retained integrity. The most prominent change that has occurred in agricultural land use since 1941 is the conversion of some areas to residential use.

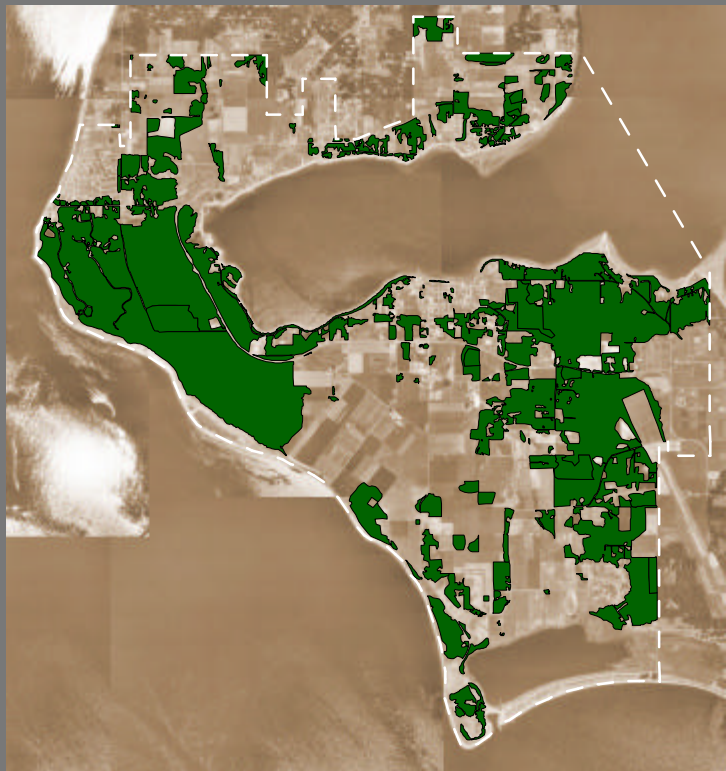
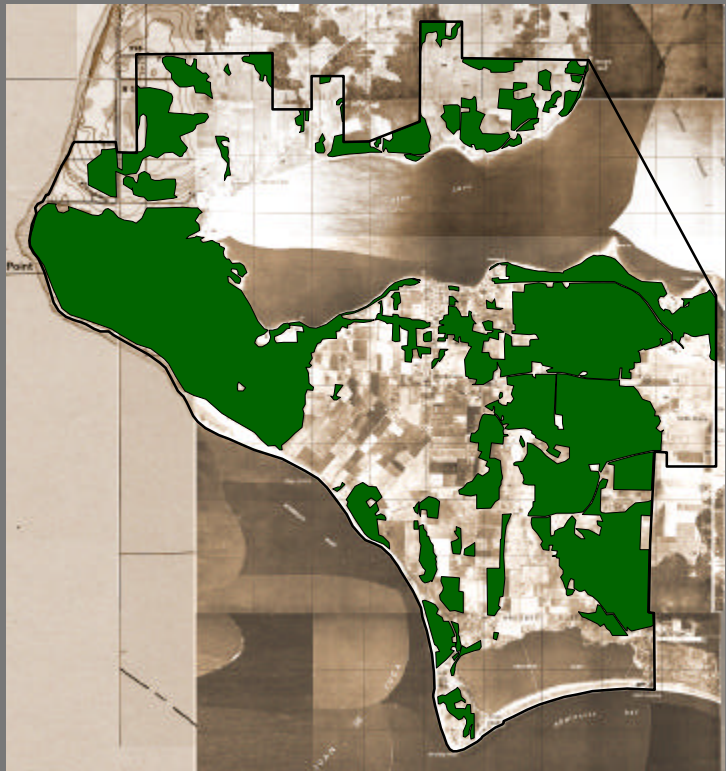
2000



Historic Changes from pre-1950 to 2000

Woodland

Woodlands have retained their cultural integrity. The most significant change that has occurred since 1941 is the erosion of the edges of the woodland and the conversion of much of this land to residential use.

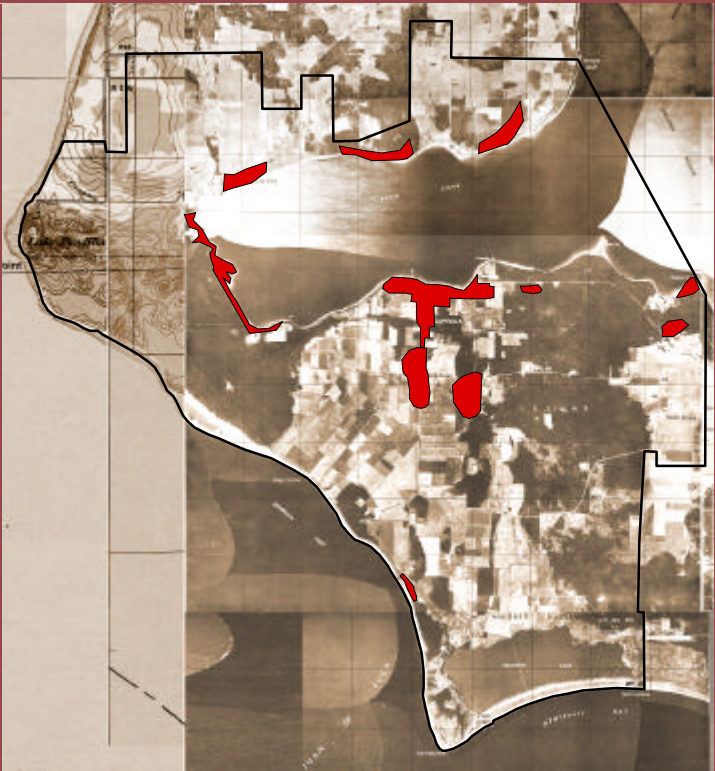


Historic Land Use

Residential / Commercial and Parks / Defense / Cemetery

Historic Changes from pre-1950 to 2000

Pre-1950



Residential / Commercial

Residential/Commercial land use has increased substantially since 1941. However, the areas that were residential/commercial remain as residential/commercial land use, and thus, this category has retained cultural integrity. The increase in residential/commercial land use is probably the most significant change in the Reserve, especially around Coupeville and in the areas where subdivisions have been created. Areas along Penn Cove contain more year-round homes rather than predominantly vacation homes. The most significant change in these areas is the increase in density.

2000



Ebey's Landing National Historical Reserve

Parks / Defense / Cemetery

The coastal defense land use has not retained integrity since Fort Ebey and Fort Casey have been converted from active forts to parks. The cemetery has remained unchanged, and thus retains integrity. The only parks that we are aware of that existed in 1941 were private along Penn Cove. Currently, a significant number of parks exist including the parks marked as a lighter green that are zoned in Island County's parcel data as parks.

