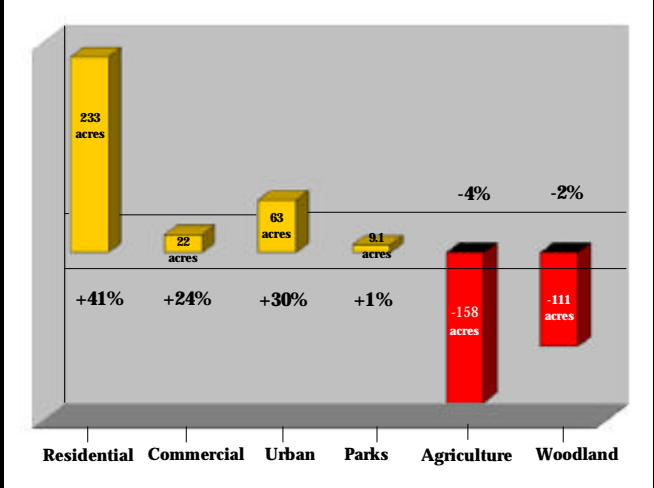


Land Use
Residential Subdivisions

Changes from 1983 to 2000



Net Change of Land Use between 1983 and 2000



The category "Residential Subdivisions" on this poster is conservatively estimated as only the areas showing characteristics indicative of subdivisions. Much of the Reserve has experienced residential growth in cropland, pasture, grassland, and woodland areas. This growth can be better understood by referring to the structures poster.

The "Urban" category contains both residential and commercial land use. Thus, it was included in both the residential and commercial categories.

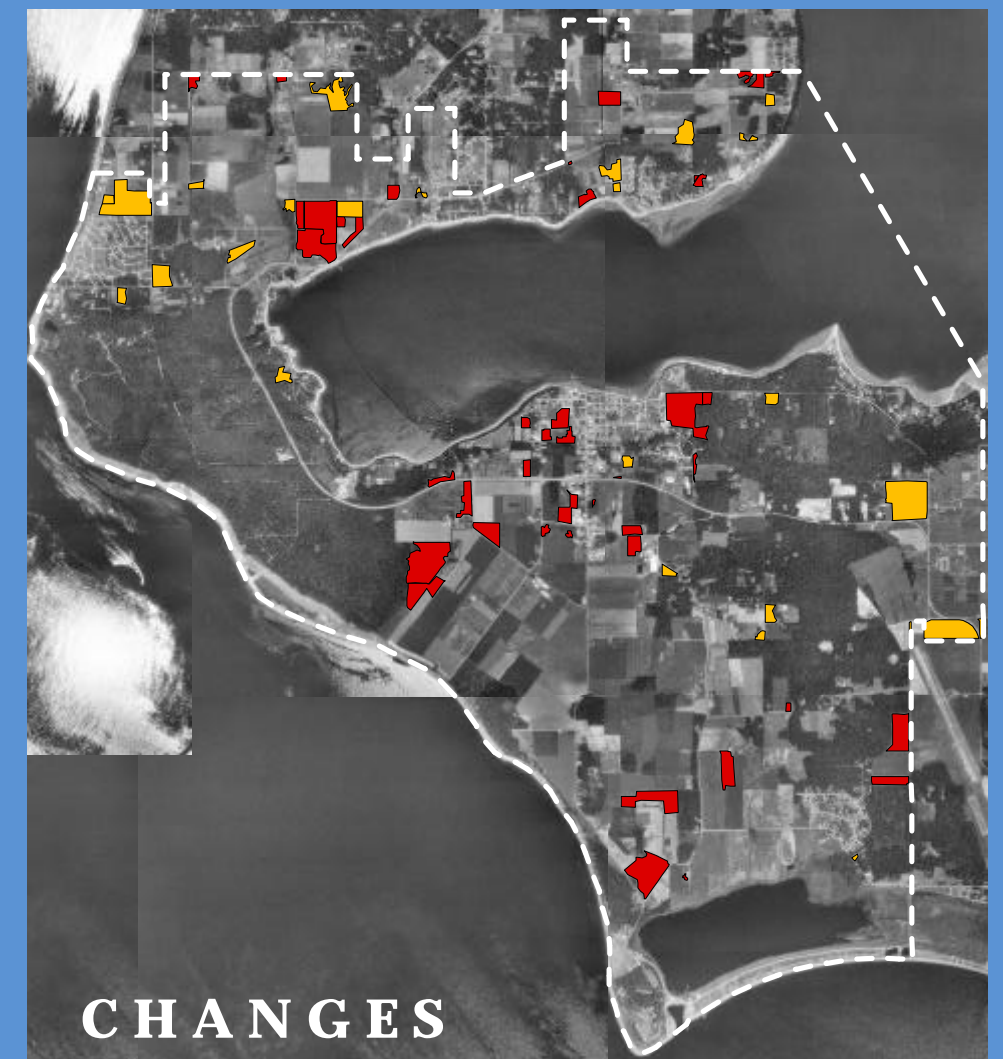
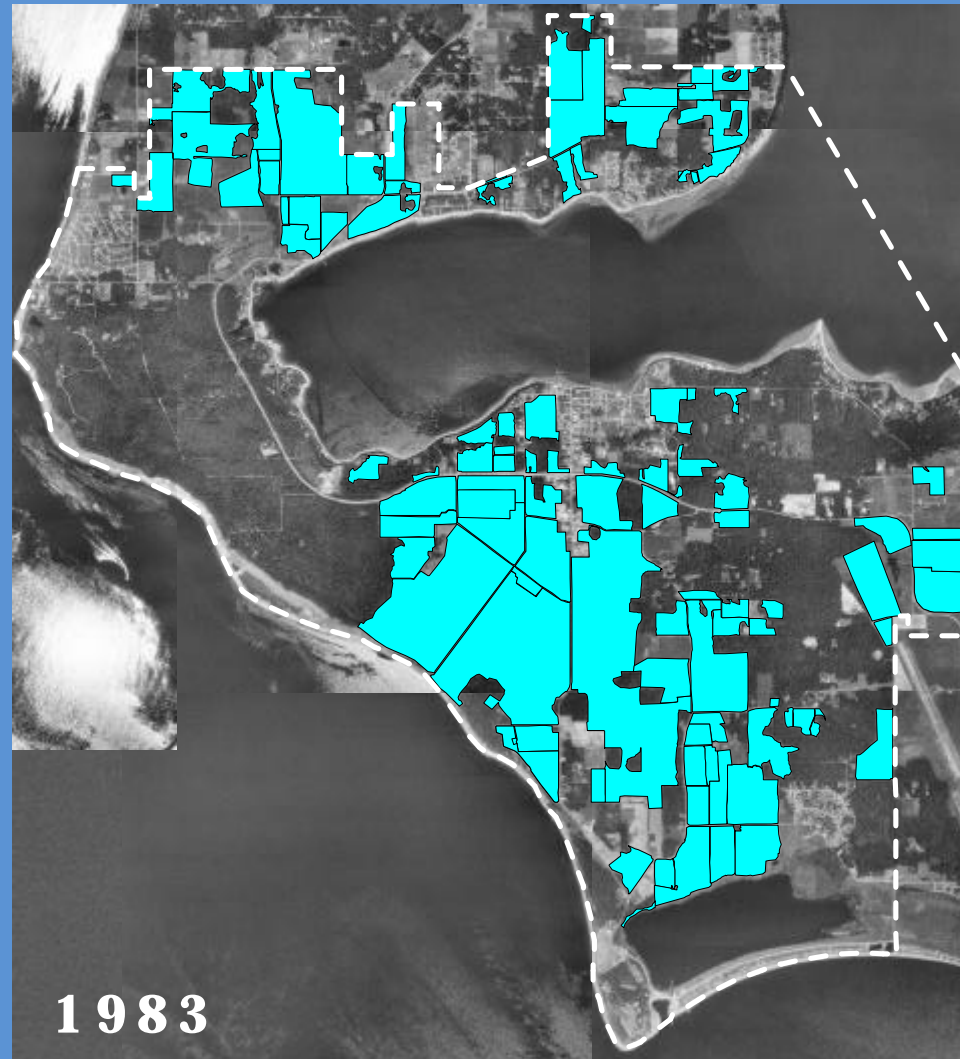
LEGEND

- 1983
- 2000
- GAINS
- LOSSES
- MUSSEL FLATS 1983
- MUSSEL FLATS 2000
- MUSSEL FLATS GAIN
- MUSSEL FLATS LOSS
- URBAN
- URBAN GAIN
- URBAN LOSS

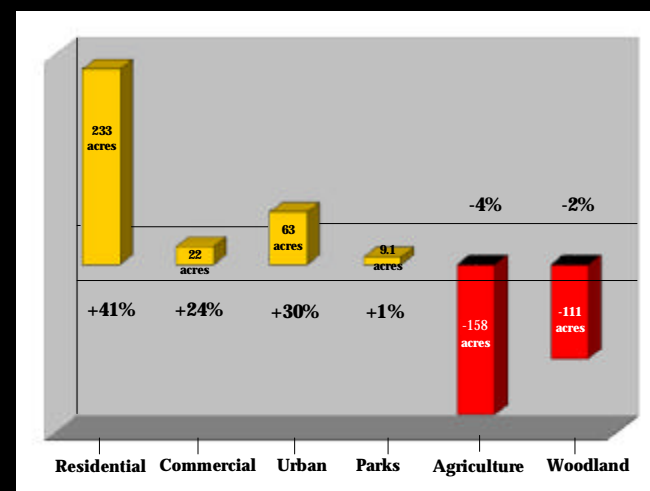
Ebey's Landing National Historical Reserve

Land Use Agriculture

Changes from 1983 to 2000



Net Change of Land Use between 1983 and 2000



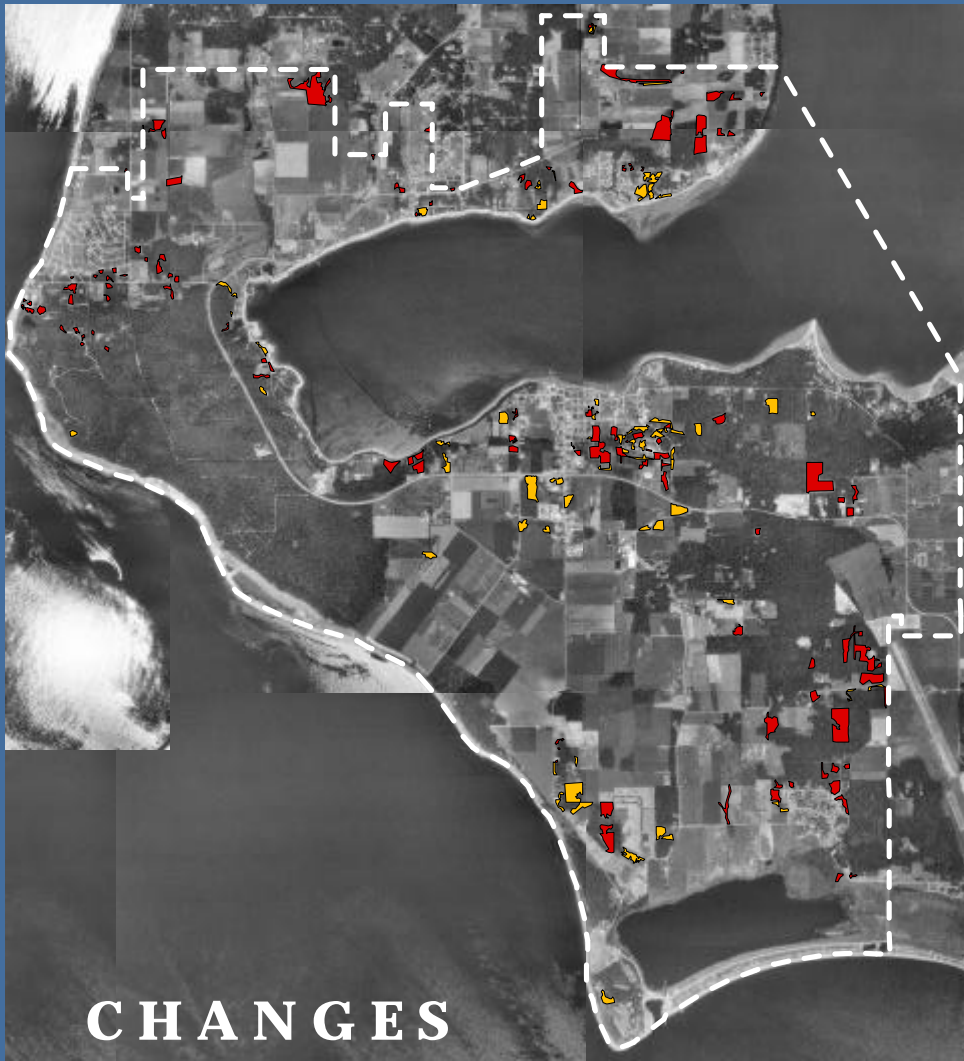
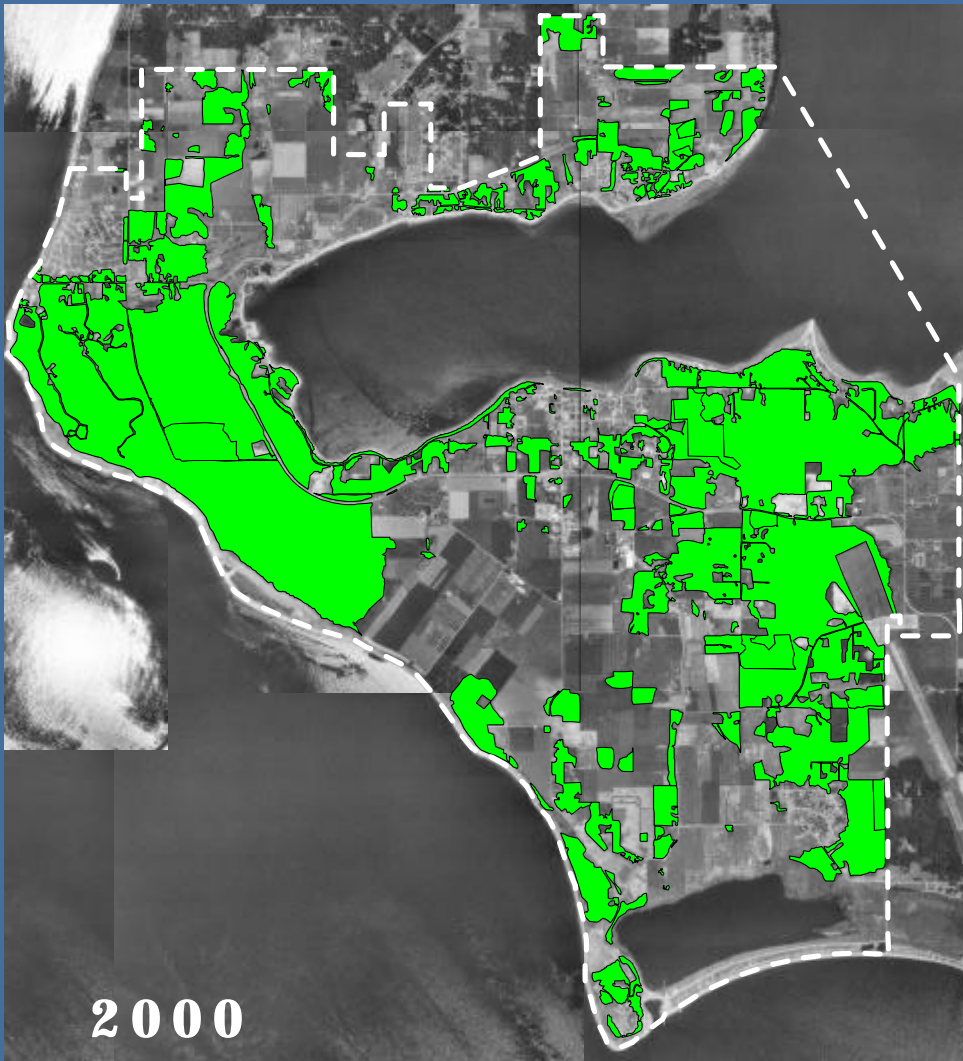
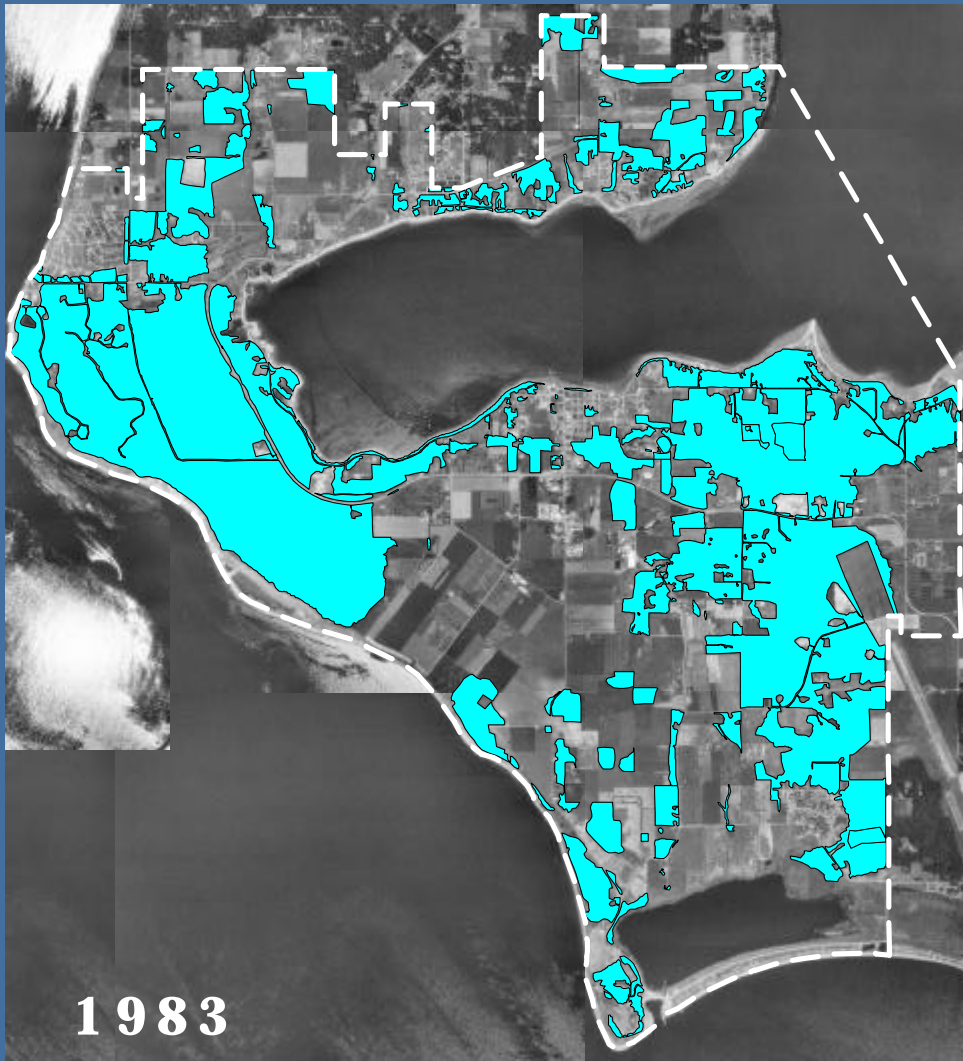
LEGEND

- 1983
- 2000
- GAINS
- LOSSES
- MUSSEL FLATS 1983
- MUSSEL FLATS 2000
- MUSSEL FLATS GAIN
- MUSSEL FLATS LOSS
- URBAN
- URBAN GAIN
- URBAN LOSS

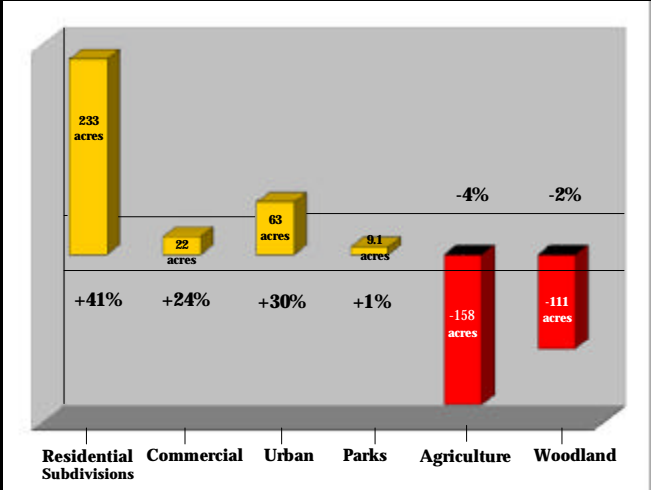
Ebey's Landing National Historical Reserve

Land Use
Woodland

Changes from 1983 to 2000



Net Change of Land Use between 1983 and 2000



LEGEND

- 1983
- 2000
- GAINS
- LOSSES
- MUSSEL FLATS 1983
- MUSSEL FLATS 2000
- MUSSEL FLATS GAIN
- MUSSEL FLATS LOSS
- URBAN
- URBAN GAIN
- URBAN LOSS

Ebey's Landing National Historical Reserve