

# Development Concept Plan

## Ebey's Landing National Historical Reserve GMP/EIS

# WEST RIDGE PROPERTY COTTAGE

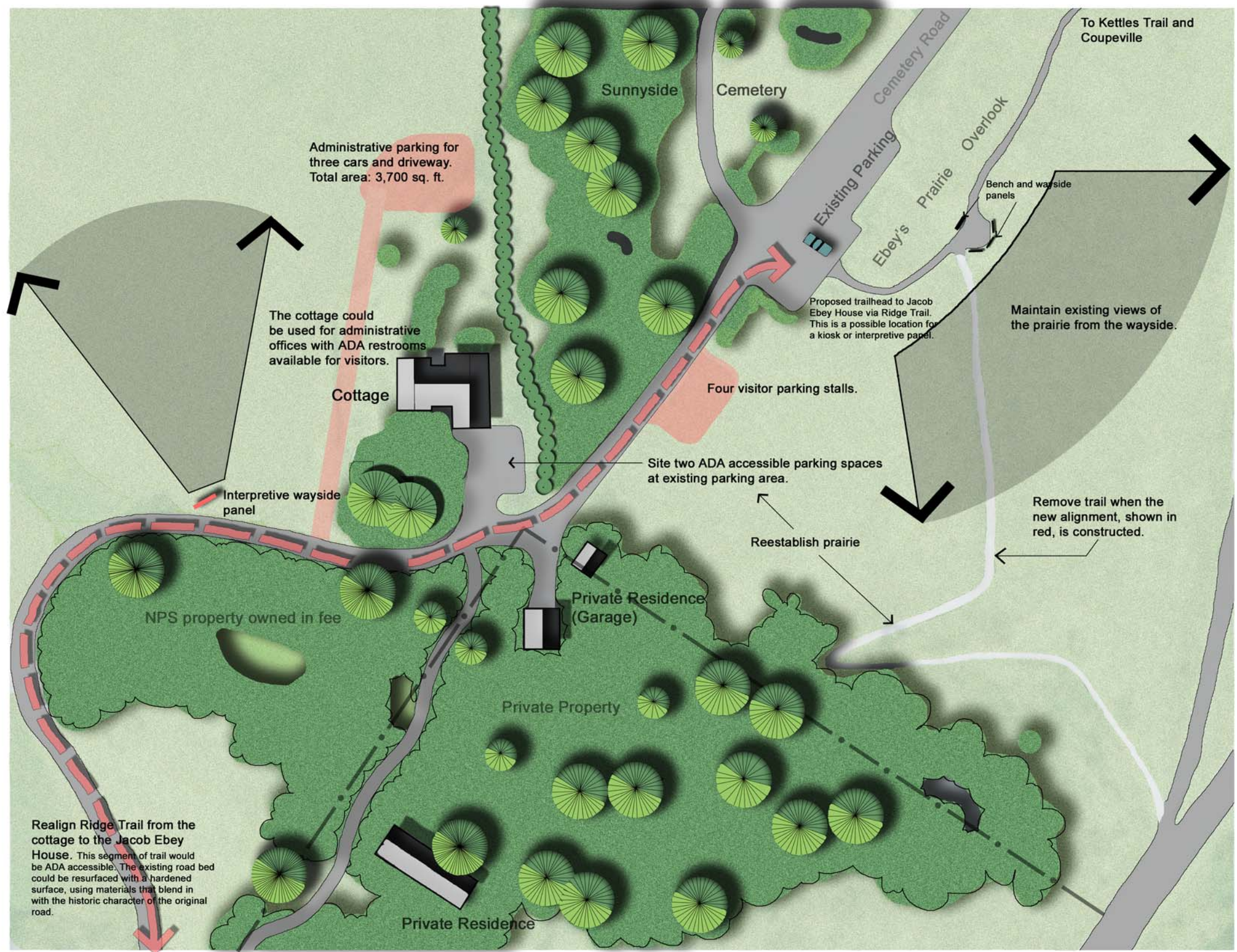


Figure 18

Produced by  
National Park Service, Pacific West Region  
Planning Program  
Seattle, Washington  
January 2005

Notes:  
Map drawn by Michael J. Hankinson using  
Geographic Information Systems and  
Photoshop 7.0.

Information presented in this plan is based on  
the draft GMP.



Development Concept Plan Proposals

0 5 25 50  
Approximate scale in feet.



### Details on the Proposed Parking Zones

1. Typical stall dimensions for 90 degree parking:  
Width: 8-9 feet. Depth: 18 feet. Buffer space behind parking spots and the private entry road: 30 feet.
2. Accessible parking spaces should be sited within 100 feet of the cottage.
3. The new driveway to the administrative parking area may be 12 feet in width.
4. Total area required to accommodate new parking is approximately 5,000 square feet.