

# Washington Monument

## Visitor's Security Screening Facility

Section 106 Meeting #5

JUNE 18, 2013

**Beyer Blinder Belle**  
Architects & Planners LLP



01. Introductions
02. Project Status
03. Design Update
04. Assessment of Effects
05. Draft Memorandum of Agreement



## Washington Monument Section 106 Process

2010



Initiate  
Consultation

2011



S106 #1  
Mar. 2011



S106 #2  
Sept. 2011



S106 #3  
Dec. 2011

2012



Site Visit  
Feb. 2012



S106 #4  
Sep. 2012



CFA Concept  
Oct. 2012



# Washington Monument Section 106 Process

2010

●  
Initiate  
Consultation

2011

1  
S106 #1  
Mar. 2011

2  
S106 #2  
Sept. 2011

3  
S106 #3  
Dec. 2011

2012

●  
Site Visit  
Feb. 2012

4  
S106 #4  
Sep. 2012

●  
CFA Concept  
Oct. 2012

2013

SPRING

●  
Draft MOA  
Mar. 2013

SUMMER

5  
S106 #5  
June 2013

●  
CFA  
Rev Concept  
June 2013

●  
Release EA  
Late June 2013

FALL

Schematic Design

●  
MOA & FONSI  
Late Aug 2013

WINTER

●  
NCPC  
Oct. 2013





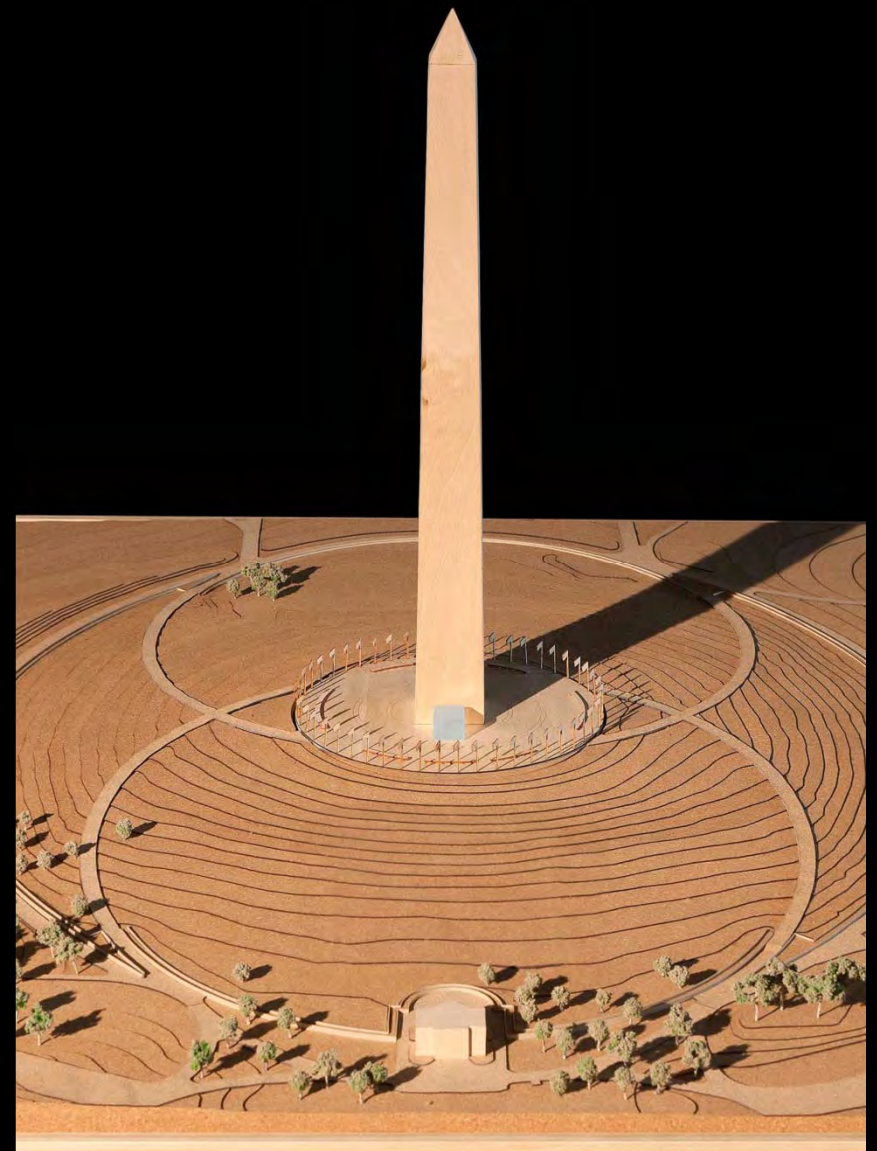
Photo: Carol Highsmith



# Design Update



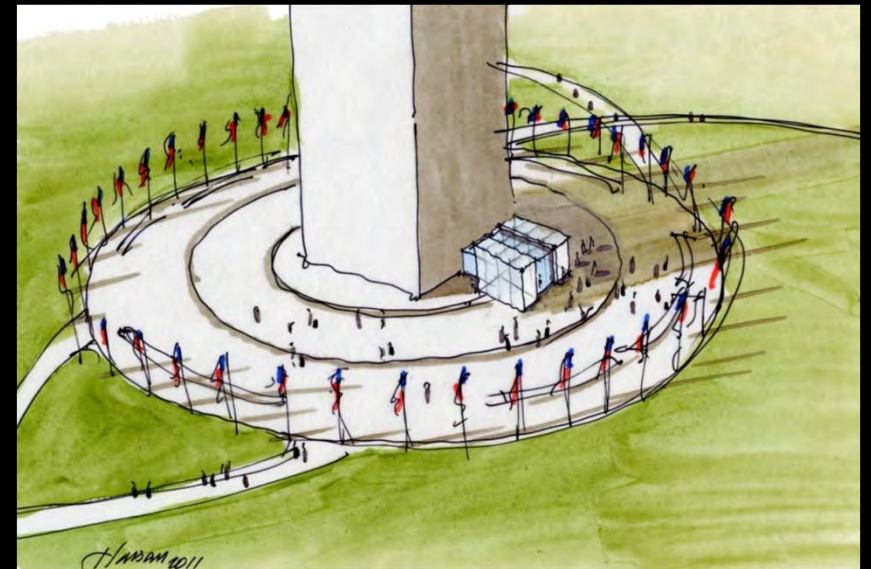




Previously Approved Alternative

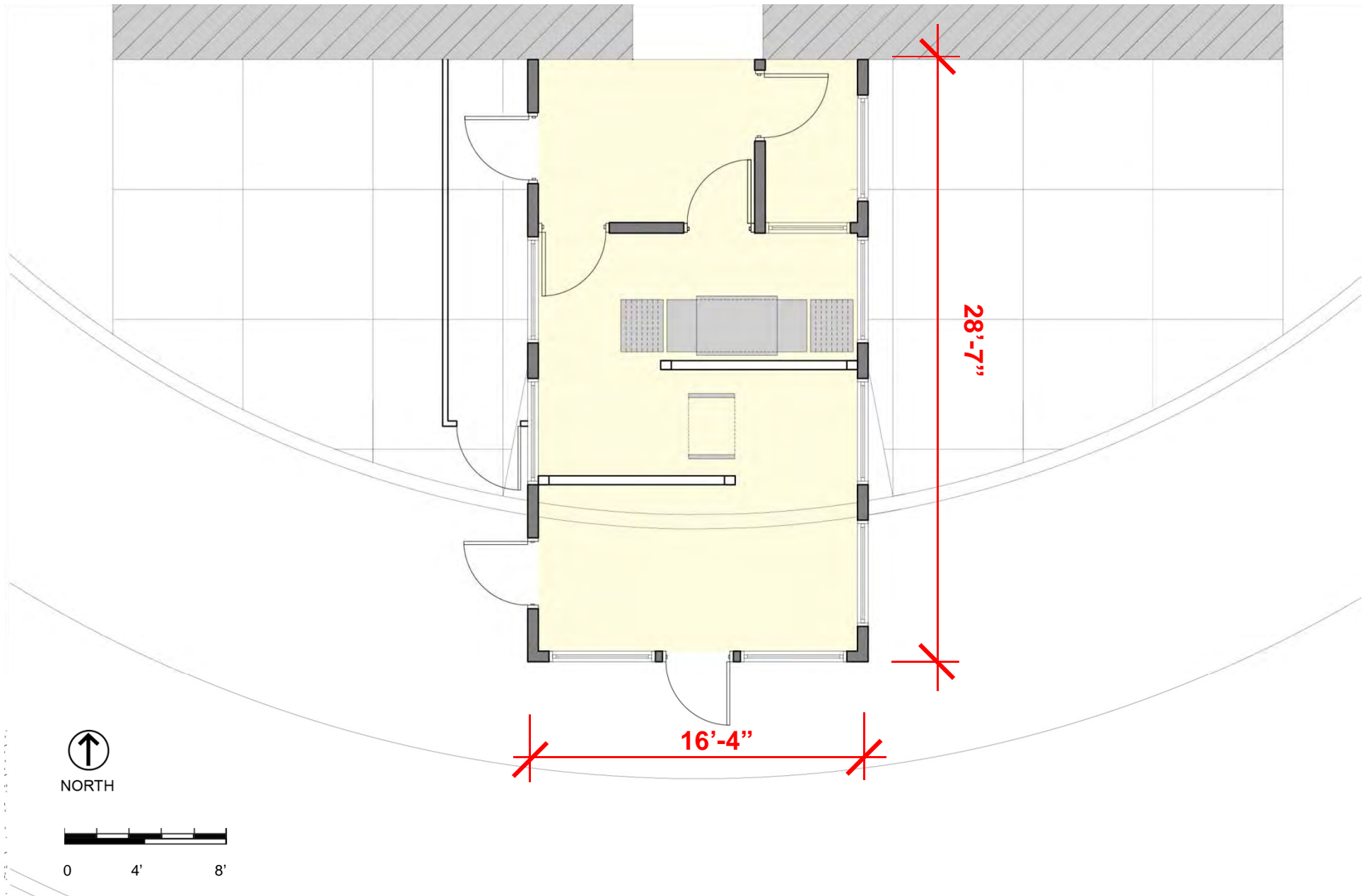






Previously Approved Alternative





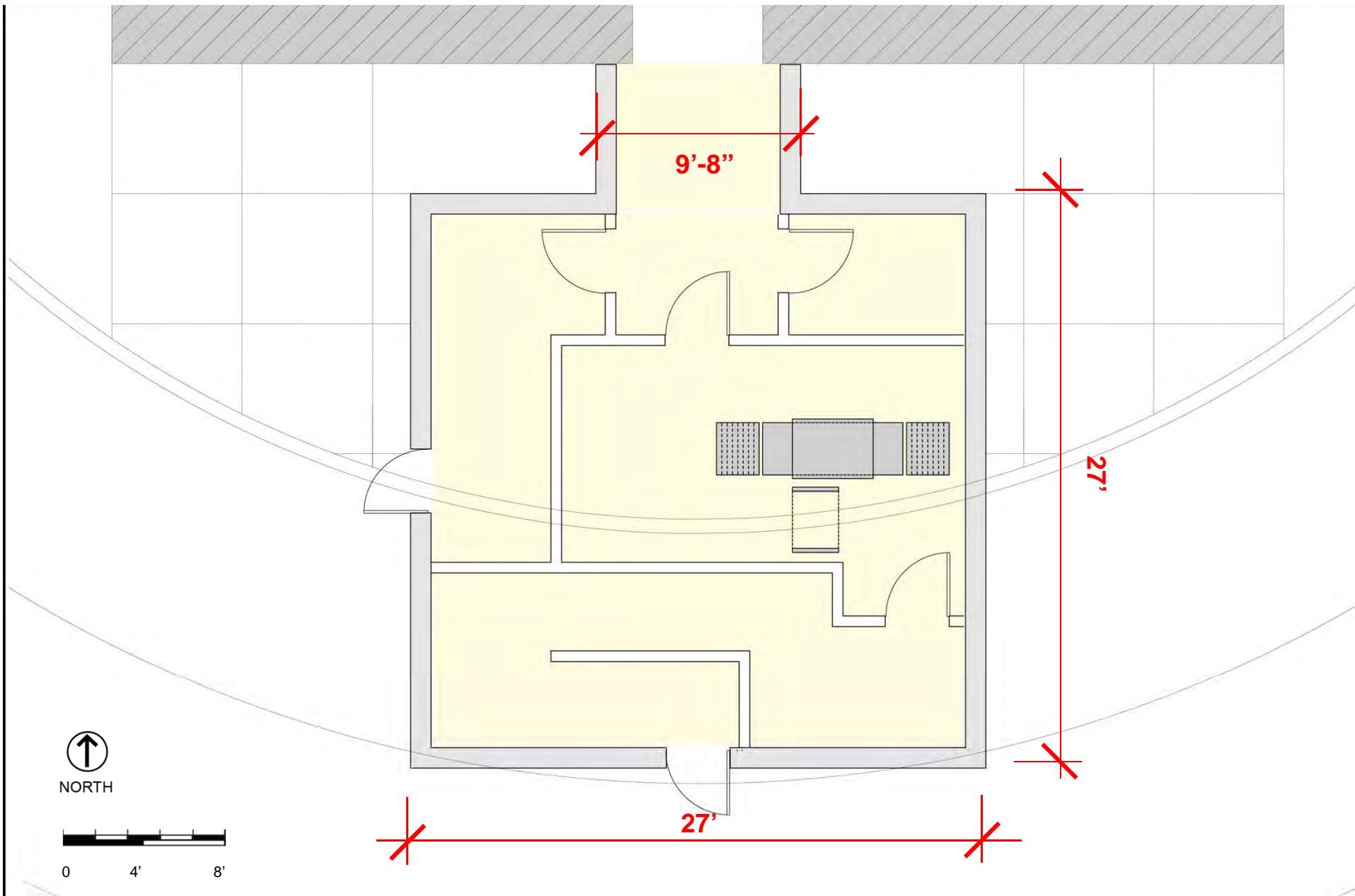
## Existing Floor Plan

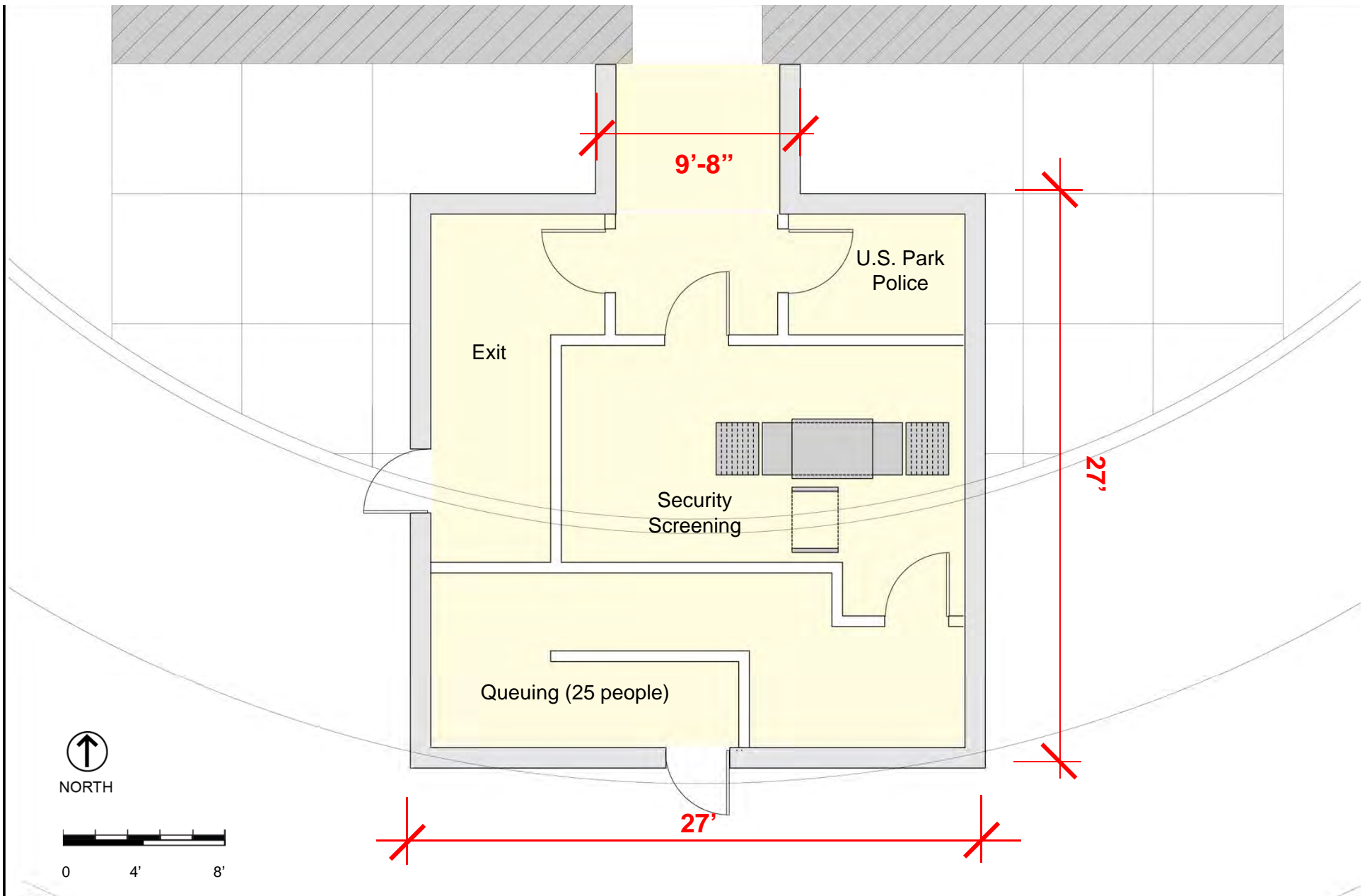


Washington Monument Visitor Security Screening Facility

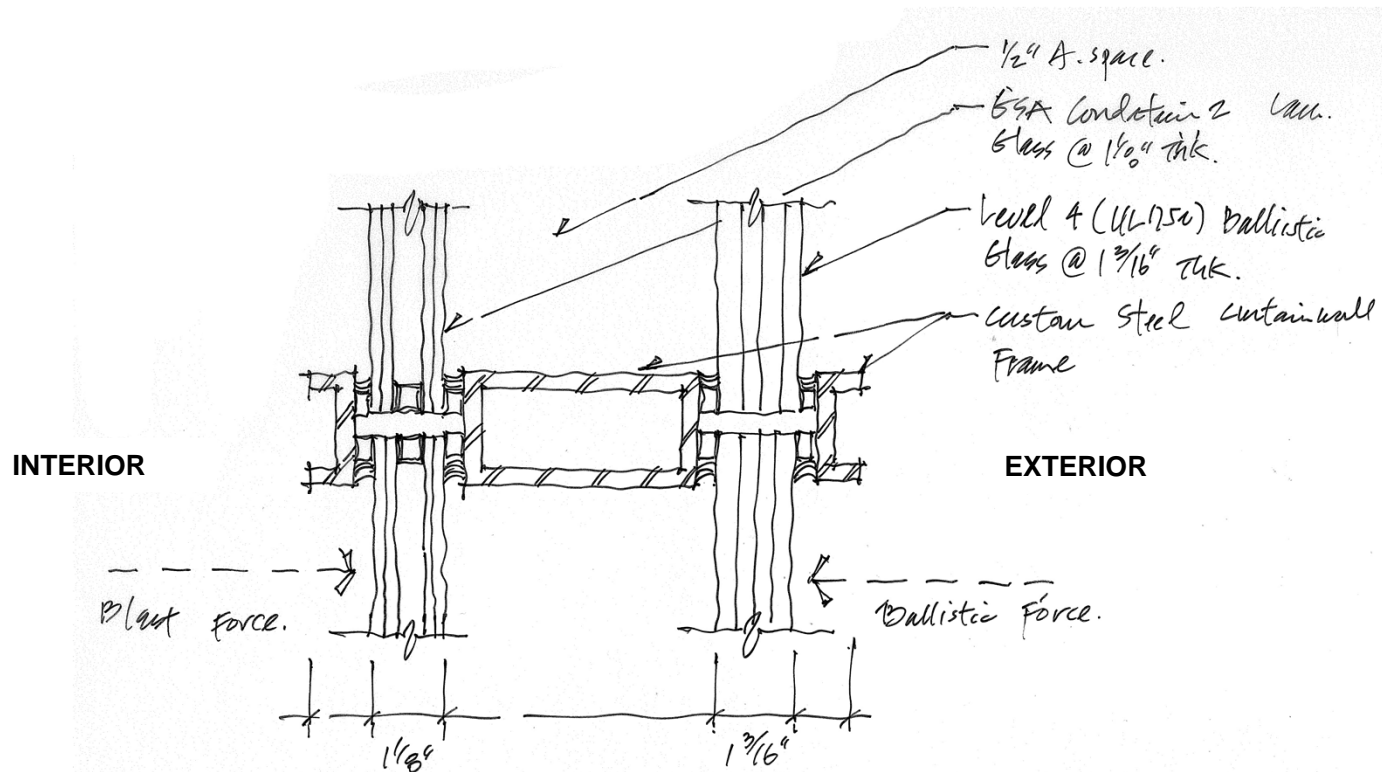
June 2013 | 8





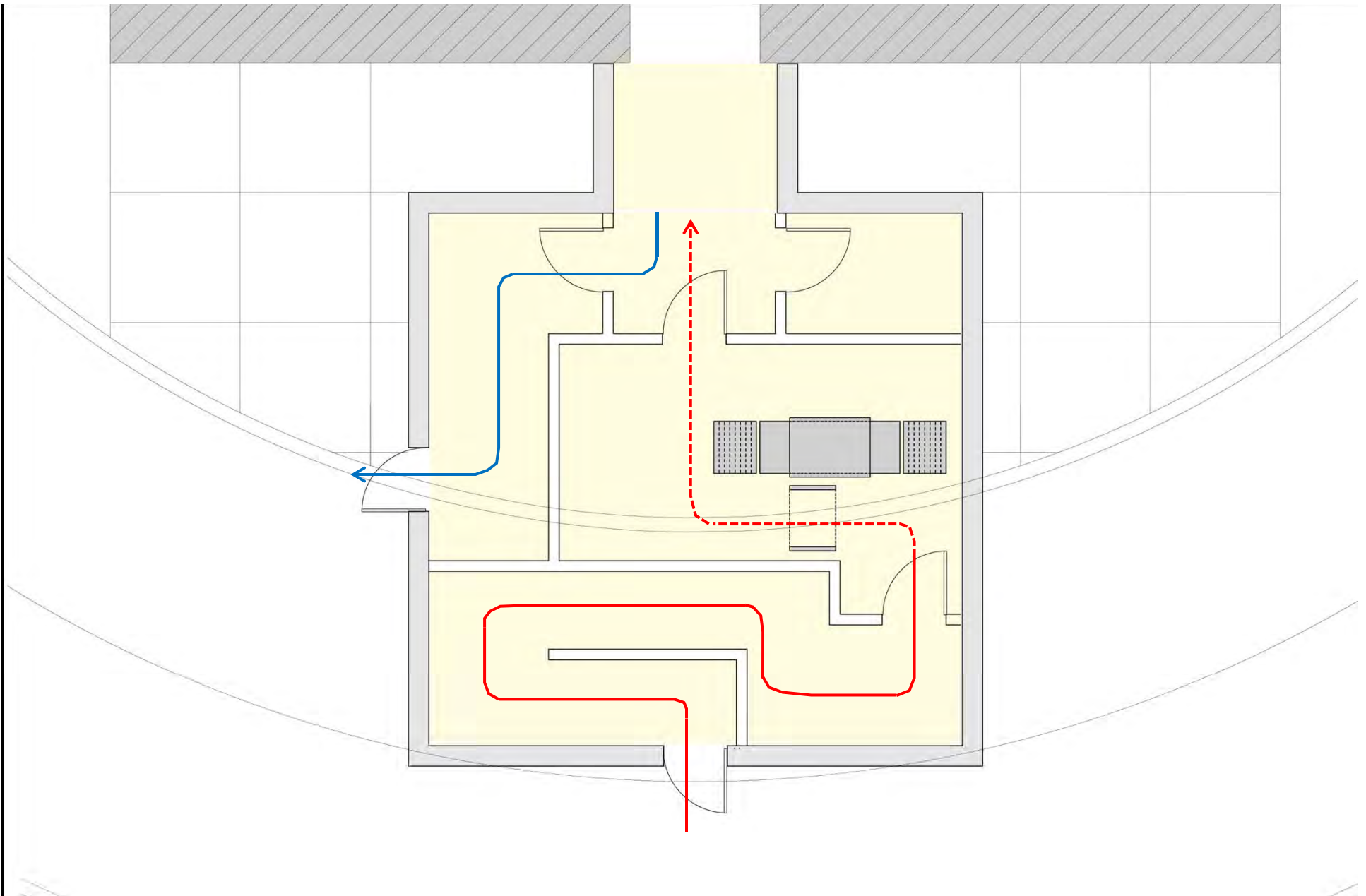






Concept Mullion / Glass Diagram  
 W.M. N.T.S.









Alternative 01







Alternative 02







Alternative 03







Alternative 04







Alternative 01



Alternative 02



Alternative 03



Alternative 04

## Summary of Options





Photo: Carol Highsmith

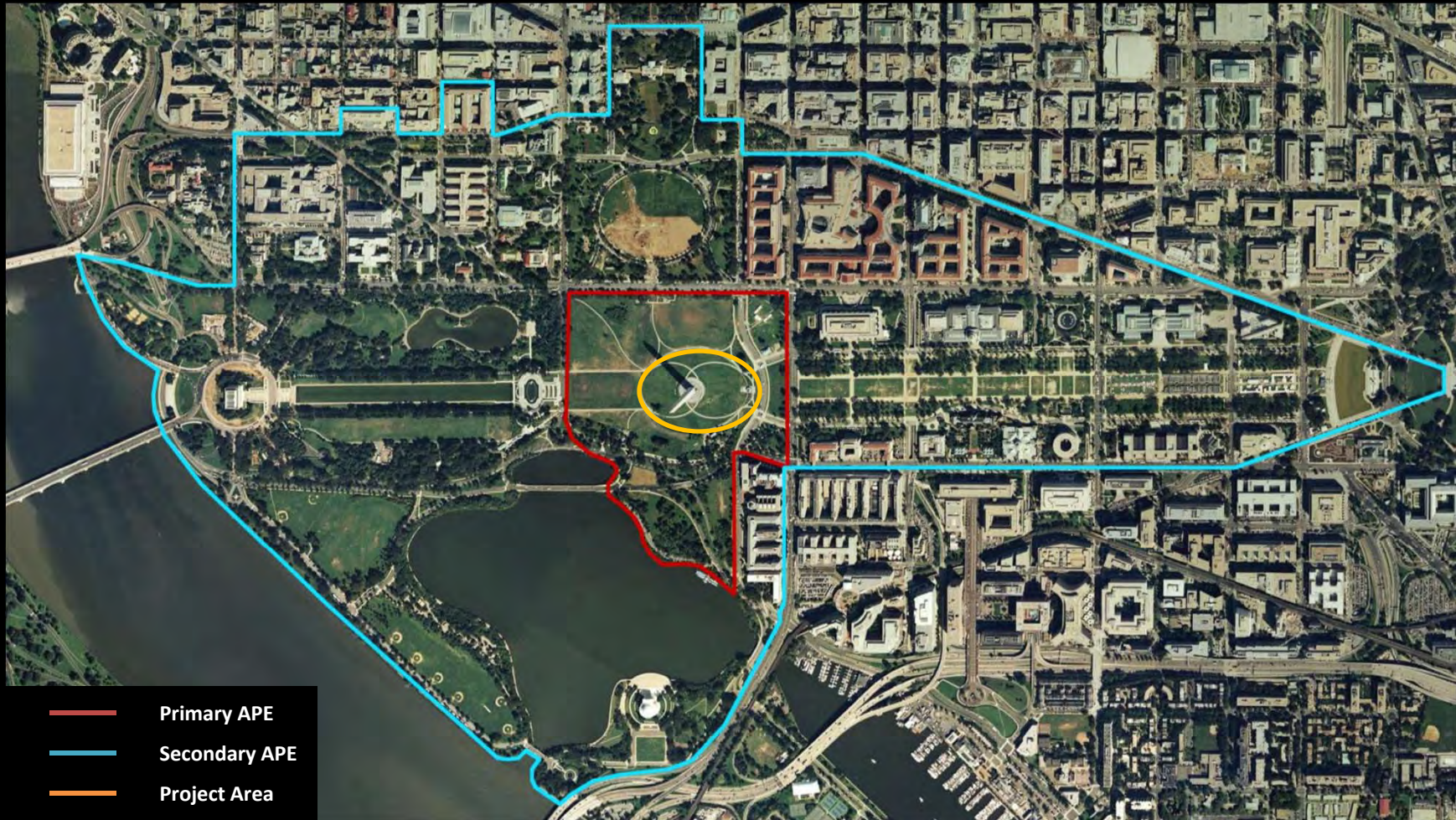


# Assessment of Effects

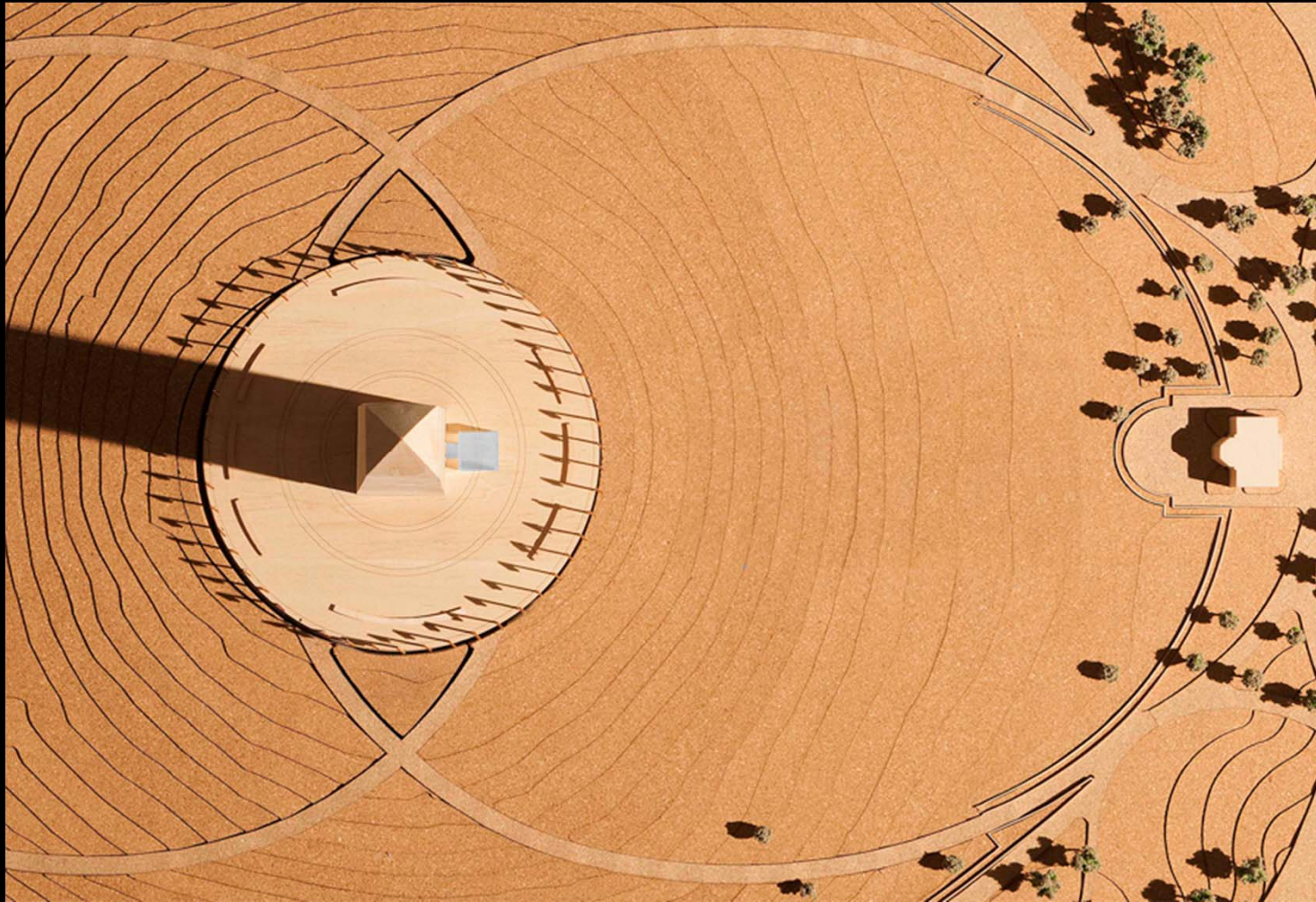




# Areas of Potential Effects



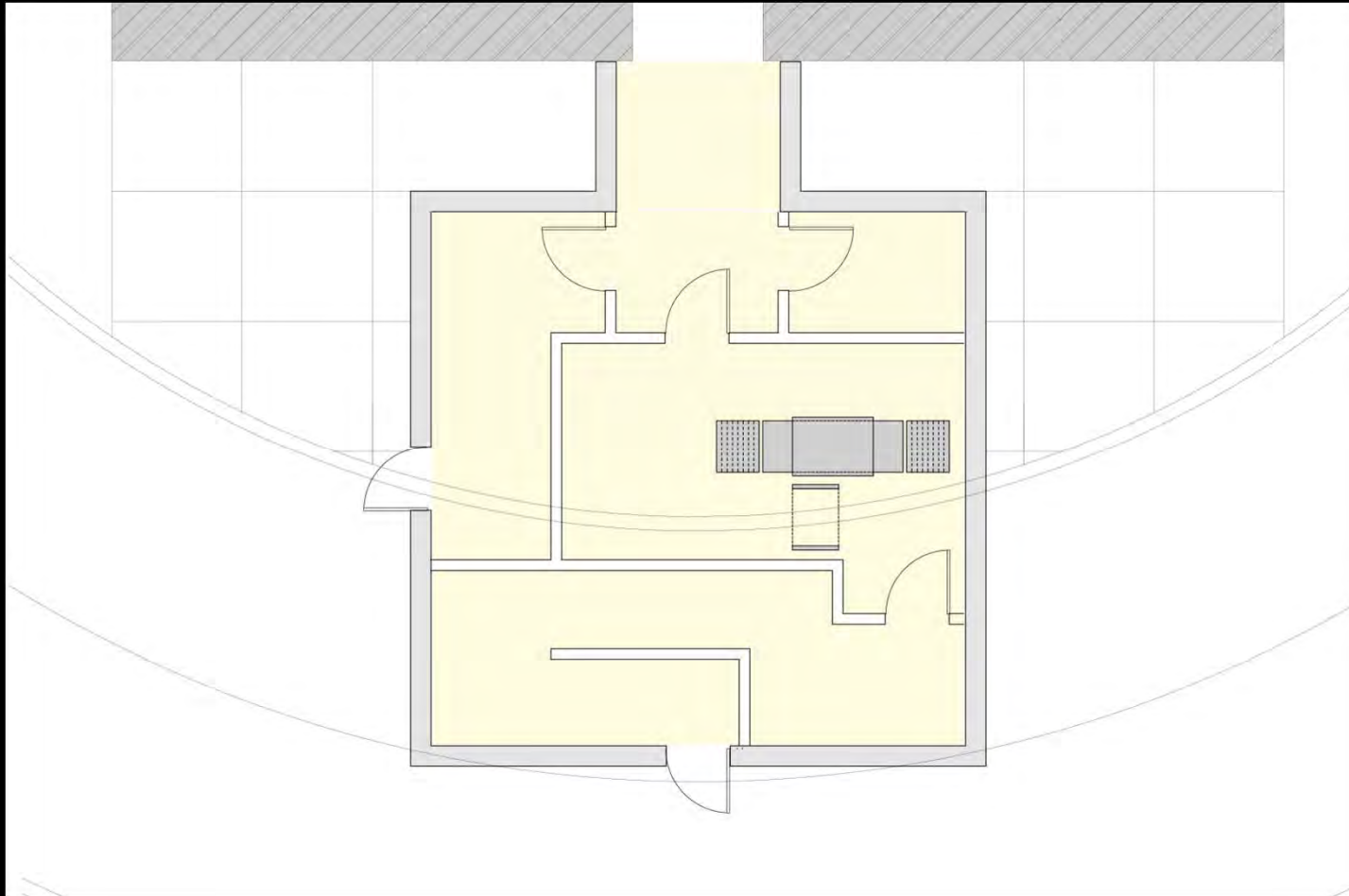




All Alternatives

**Spatial organization** – The entrance pavilion alters the simplicity of the existing relationships between Monument, plaza, and surrounding landscape. The pavilion also alters the symmetry of the Monument and plaza.





## All Alternatives

**Circulation** – The pavilion alters traditional circulation by inserting a new building into the entrance sequence.







Alternative 01



Alternative 02

All Alternatives

**Buildings and Structures** - A building is inserted into the historically open space of the plaza.







Alternative 01



Alternative 02



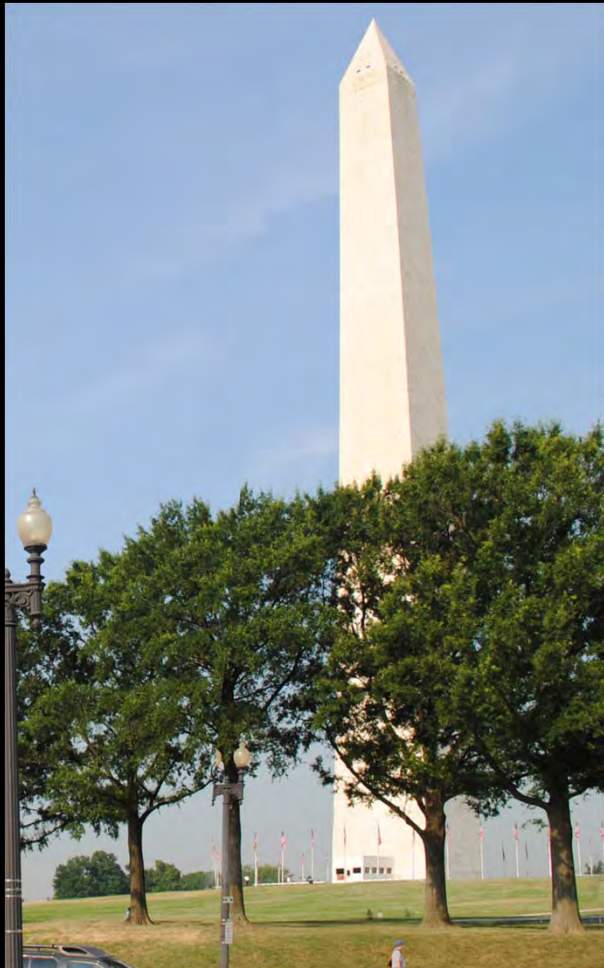
Alternative 03



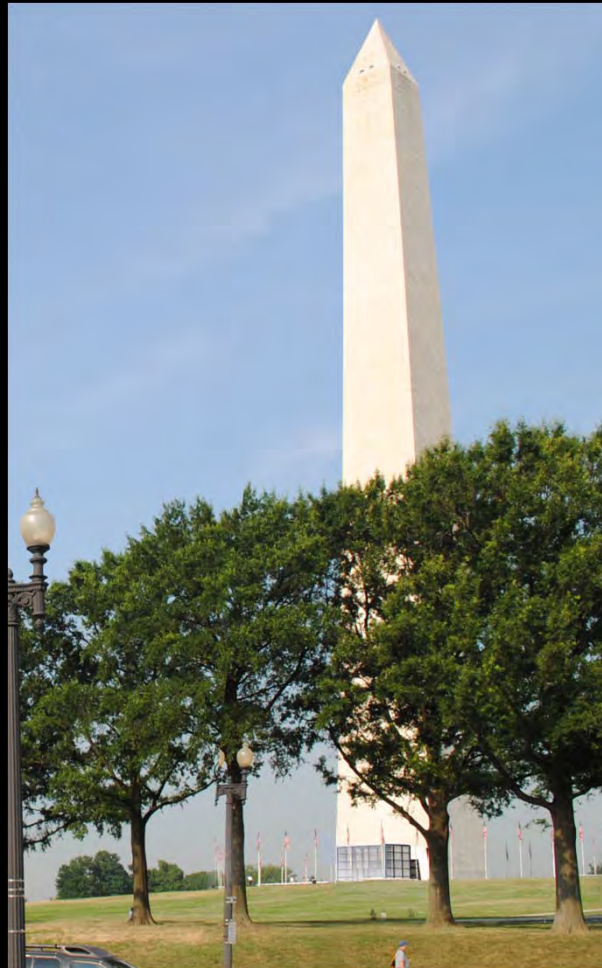
Alternative 04

**Views** – The pavilion obscures views of the original entrance to the Monument.

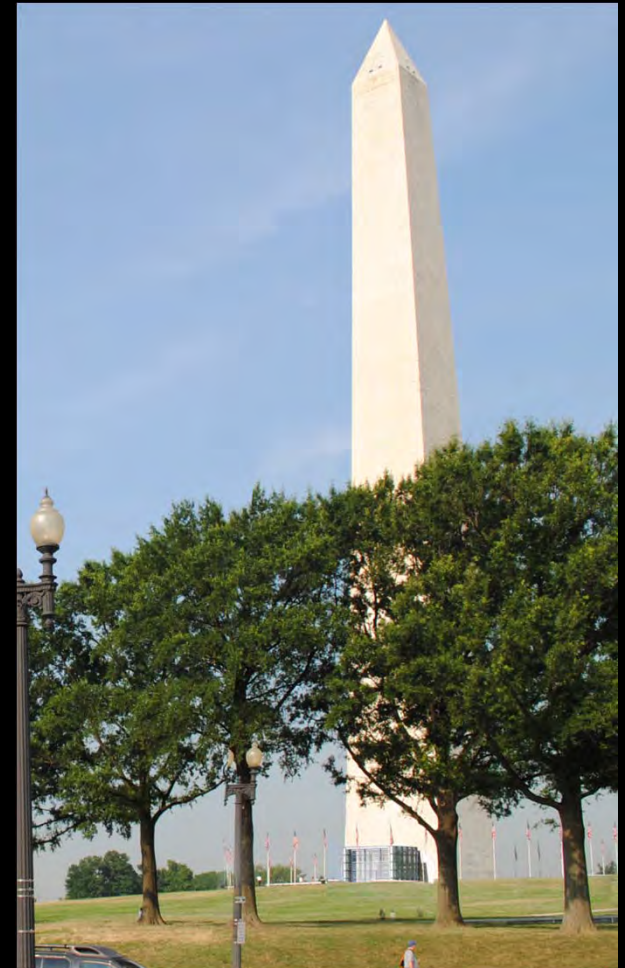




Existing View



Alternative 01



Alternative 02

**Views** – The pavilion alters views of the Monument from the east side of the Monument grounds.





Existing  
view from  
the Mall



Alternative 01



Alternative 02



Views – The pavilion alters views of the Monument from the Mall.







Top – Existing view from southeast. Bottom – Existing view from northeast.

**Views** – The pavilion alters views of Monument from north and south sides of Monument Grounds, including Constitution and Independence avenues.





Existing view



Alternative 01



Alternative 02

**Views** – The pavilion alters aerial views of the Monument.



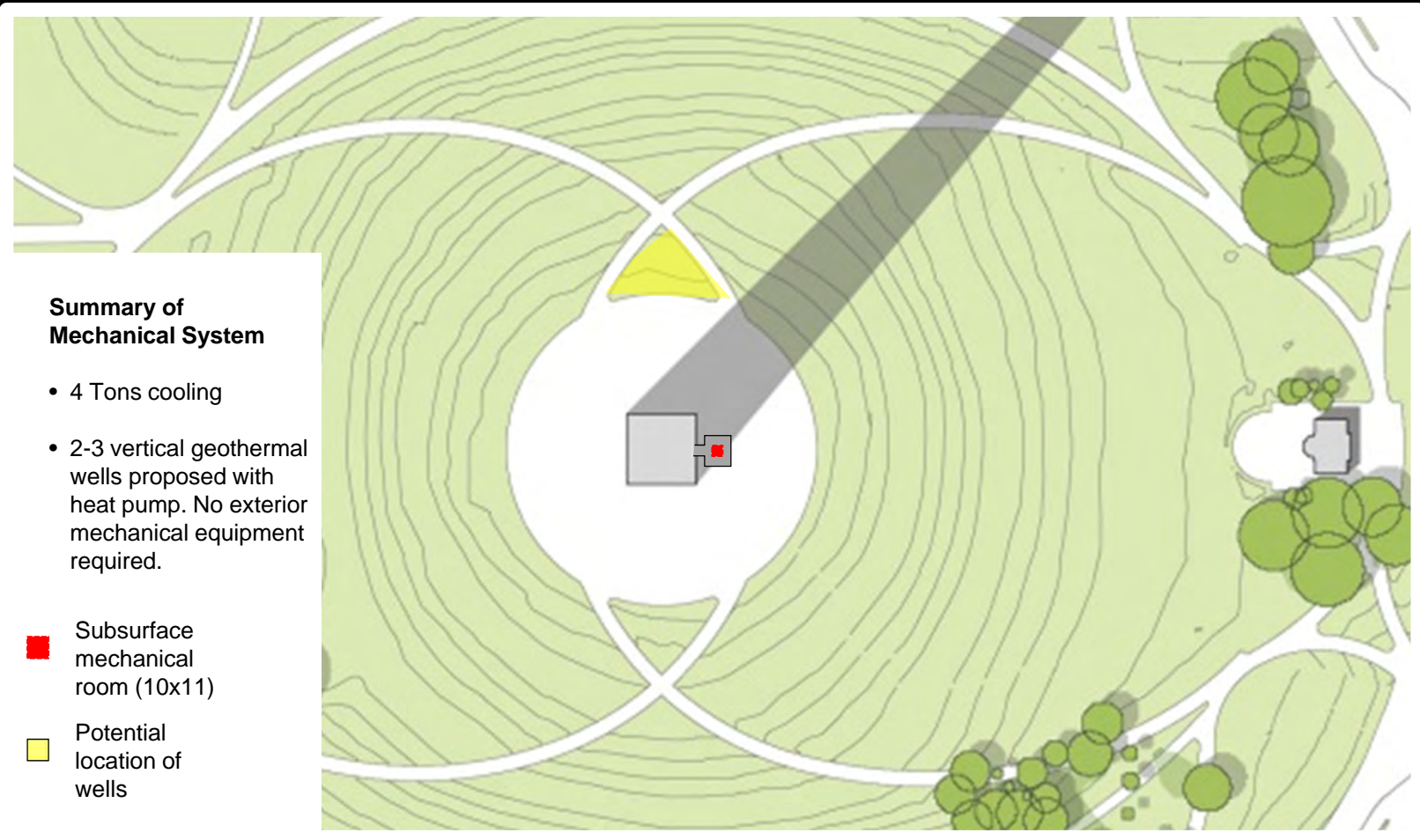




Existing view across the Monument plaza from the approach walk, looking south

**Views** – The pavilion alters panoramic views from the Monument and plaza to the east, north, and south.





**Archeology** – Geothermal wells have potential to impact archeological remains in undisturbed soil below the mound.





## **Avoidance – All Alternatives**

- Avoids changes to exterior of Monument.
- Avoids changes to lawn and mound.
- Avoids removal of original foundation material.
- Avoids need for balanced unloading.
- Avoids changes to historic features of below-grade mechanical area on west.

## **Minimization – All Alternatives**

- Minimizes changes to traditional circulation.
- Pavilion is reversible; permanent changes minimized.
- Cubical form of pavilion minimizes effects on purity of obelisk.





Photo: Carol Highsmith



Draft MOA





Photo: Carol Highsmith



# Next Steps



# 2013

SPRING

SUMMER

FALL

WINTER

